

cudy
GP1200V
xPON Wi-Fi
Router



cudy GP1200V xPON Wi-Fi Router Installation Guide

[Home](#) » [cudy](#) » cudy GP1200V xPON Wi-Fi Router Installation Guide 

Contents

- [1 cudy GP1200V xPON Wi-Fi Router](#)
- [2 Specifications](#)
- [3 Product Usage Instructions](#)
- [4 FAQ](#)
- [5 Usage Instructions](#)
- [6 CONNECTION](#)
- [7 Documents / Resources](#)
 - [7.1 References](#)

cudy

cudy GP1200V xPON Wi-Fi Router



Specifications

- **Languages:** English, Italiano, Deutsch, Eesti, Norsk, Svenska, Ting Vit, Cestina, Suomi, Dansk, Hrvatski, Magyar
- **Model Number:** 810600330
- **Manufacturer:** Cudy
- **Website:** www.cudy.com
- **Email:** support@cudy.com

Product Usage Instructions

- **Caution** DO NOT look directly at the PON port when the device is powered on, as well as the terminal of the indoor fibre cord, to prevent any harm to your eyes.
- **Note:** *The image may differ from the actual product.*

Quick Installation Steps

1. Connect the power adapter.
2. Connect to the Internet.
3. Verify if the Power LED and PON LED are solid on, and the LOS LED is off, ensuring successful registration of your PON router.
4. Connect your device to the router using either Wi-Fi or Wired method.

Connecting via Wi-Fi

A. Wi-Fi: Connect your device to the router's Wi-Fi using the SSID (network name) and Password printed on the bottom of the router.

FAQ

- **Q: How do I reset the router to factory settings?**

- **A:** To reset the router to factory settings, locate the reset button on the router and press and hold it for at least 10 seconds until the LEDs blink. Release the button and wait for the router to reboot.

- **Q: How can I update the firmware of the router?**

- **A:** To update the firmware of the router, visit the official Cudy website at www.cudy.com/download and look for the latest firmware version for your specific model. Follow the instructions provided on the website to update the firmware.

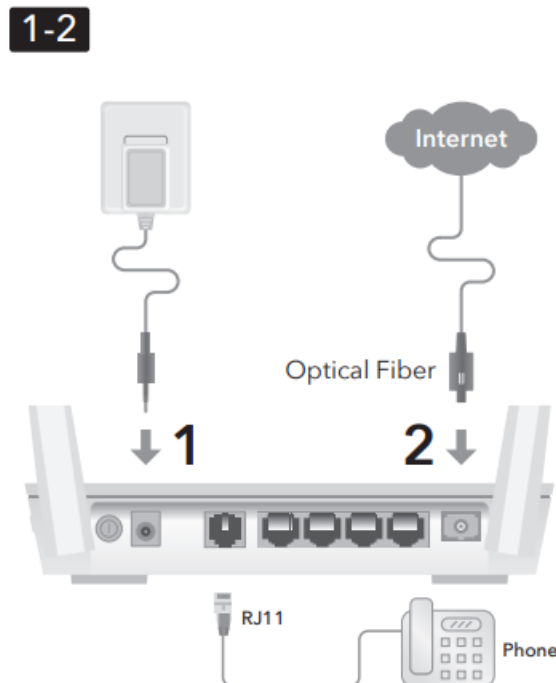




Caution, laser DO NOT look directly at the PON port when the device is powered on, as well as the terminal of the indoor fiber cord, to prevent any harm to your eyes.

Usage Instructions

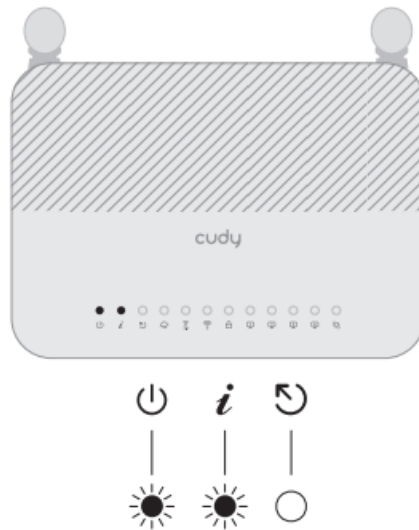
Note: The image may differ from the actual product.

1. Connect the power adapter.
2. Connect to the Internet.



3. Verify if the  Power LED and  PON LED are solid on, and LOS LED is off, and your PON router is successfully registered.

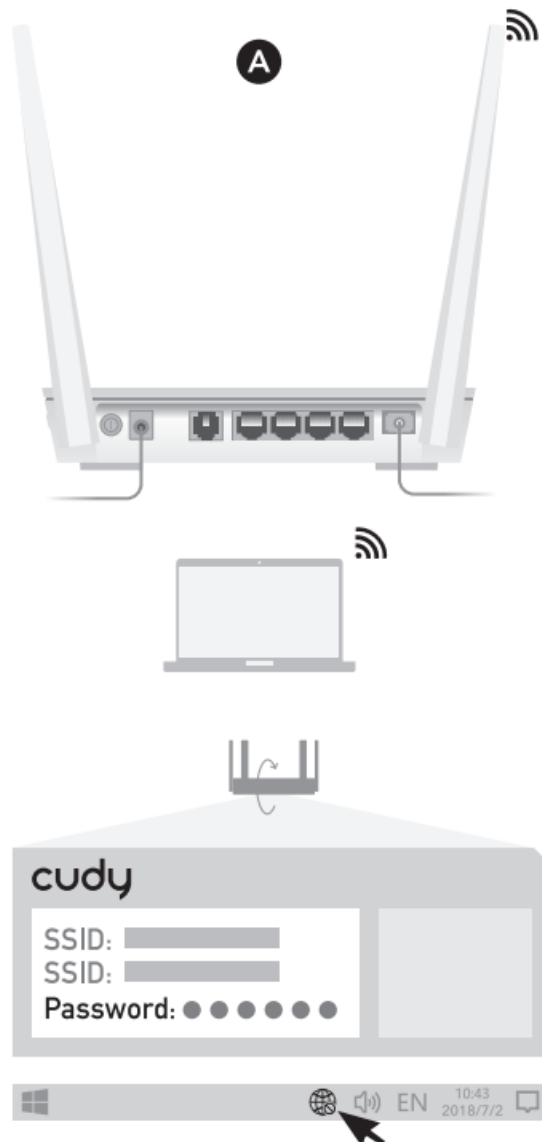
3



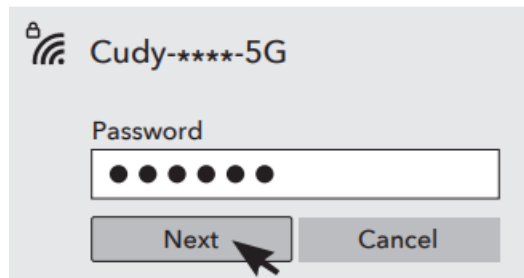
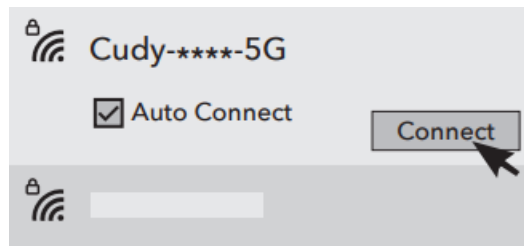
4. Connect your device to the router using the A Wi-Fi or B Wired method.

- **A Wi-Fi:** Connect your device to the router's Wi-Fi using the SSID (network name) and Password printed on the bottom of the router.

4

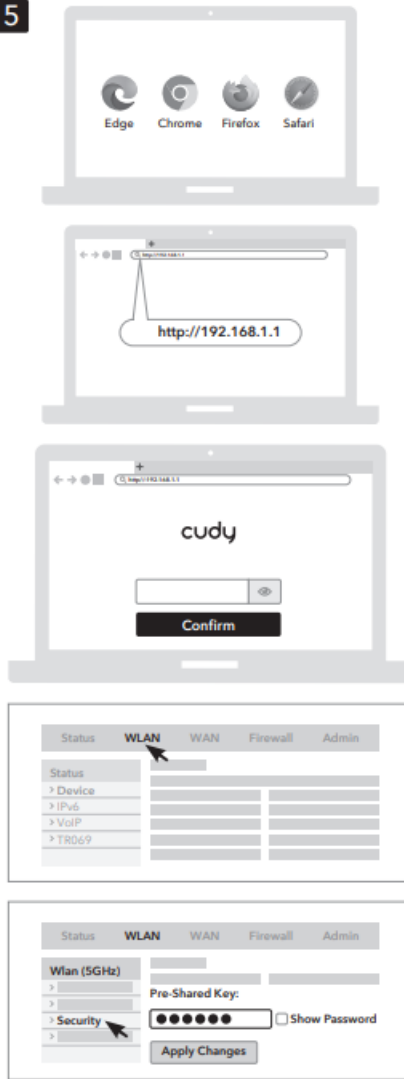



- **B Wired:** Turn off the Wi-Fi on your computer and connect it to the router's LAN port via an Ethernet cable.



5. Open a browser on a device that is connected to the router and follow the picture to change the Wi-Fi password.

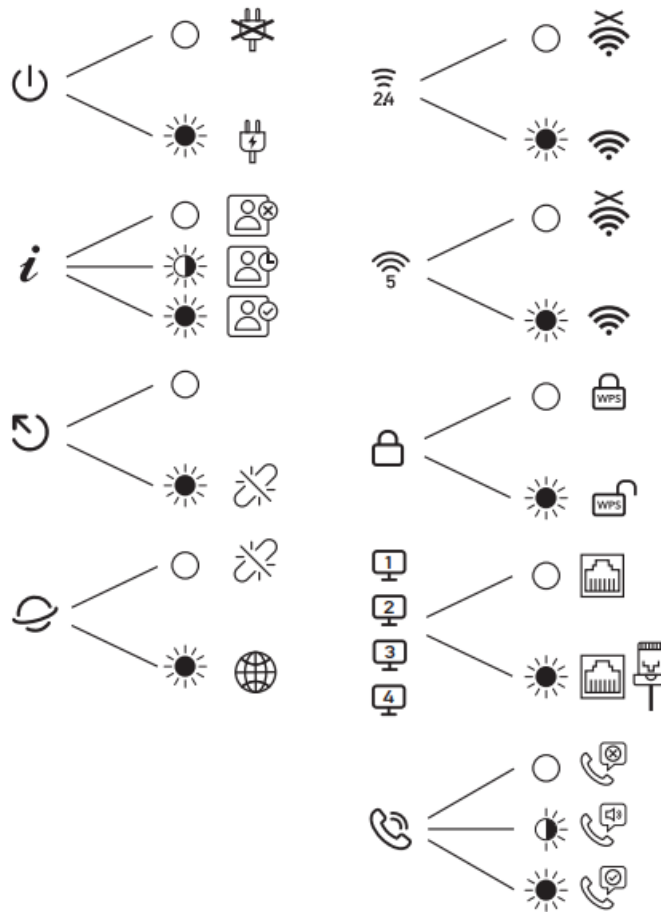
5



-  Enjoy the internet.

CONNECTION

LED



NEED TECH HELP?

- 810600330



- www.cudy.com



- support@cudy.com



- www.cudy.com/download
- Support: For technical support, the user guide and more information
- Please visit: <https://www.cudy.com/support>

Documents / Resources



[cudy GP1200V xPON Wi-Fi Router](#) [pdf] Installation Guide
GP1200V xPON Wi-Fi Router, GP1200V, xPON Wi-Fi Router, Wi-Fi Router, Router

References

- [Cudy, Your Home and Business Networking Solutions Provider](#)

- [!\[\]\(eae20f1adff742df783f6f7e3bbe72d1_img.jpg\) Download Search – Cudy](#)
- [!\[\]\(43c6e08c5a1618d745b54da5c843274e_img.jpg\) Contact Us – Cudy](#)
- [User Manual](#)

[Manuals+](#), [Privacy Policy](#)

This website is an independent publication and is neither affiliated with nor endorsed by any of the trademark owners. The "Bluetooth®" word mark and logos are registered trademarks owned by Bluetooth SIG, Inc. The "Wi-Fi®" word mark and logos are registered trademarks owned by the Wi-Fi Alliance. Any use of these marks on this website does not imply any affiliation with or endorsement.