

cudy
CS700 Dual 4K
10 Gbps USB-C
Dock



cudy CS700 Dual 4K 10 Gbps USB-C Dock User Guide

[Home](#) » [cudy](#) » cudy CS700 Dual 4K 10 Gbps USB-C Dock User Guide 

Contents

- [1 cudy CS700 Dual 4K 10 Gbps USB-C Dock](#)
- [2 Product Information](#)
- [3 Product Usage Instructions](#)
- [4 Ports Overview](#)
- [5 Connect Monitors](#)
- [6 Power on and Connect Your Host Device](#)
- [7 Download Drivers](#)
- [8 Install the Driver](#)
- [9 Configure Monitor Settings](#)
- [10 FAQ](#)
- [11 Documents / Resources](#)
 - [11.1 References](#)

cudy

cudy CS700 Dual 4K 10 Gbps USB-C Dock



Product Information

Specifications

- **Ports:** OFF/ON, HDMI, DisplayPort
- **Connectivity:** PC port, host's port for PD charging
- **Supported OS:** Windows 10/11, ChromeOS R51+, macOS, Android, Chrome OS, Ubuntu

Product Usage Instructions

Ports Overview

- The docking station features an OFF/ON switch, HDMI port, and DisplayPort for connectivity.

Connect Monitors

- When connecting two monitors, plug one cable into zone 1 and another into zone 2 on the docking station.

Power On and Connect Your Host Device

- Connect your host device to the PC port on the back of the docking station and use the host's port that supports PD charging.

Download Drivers

- Visit www.cudy.com/cs to download the DisplayLink driver. Follow the on-screen instructions for installation. Users of compatible systems may not need to manually install the driver.

Install the Driver

- Double-click the downloaded file and follow the installation prompts. Grant necessary permissions like screen recording if prompted.

Configure Monitor Settings

- Scan the provided QR code to learn how to configure Extend/Mirror modes on different systems.

FAQ

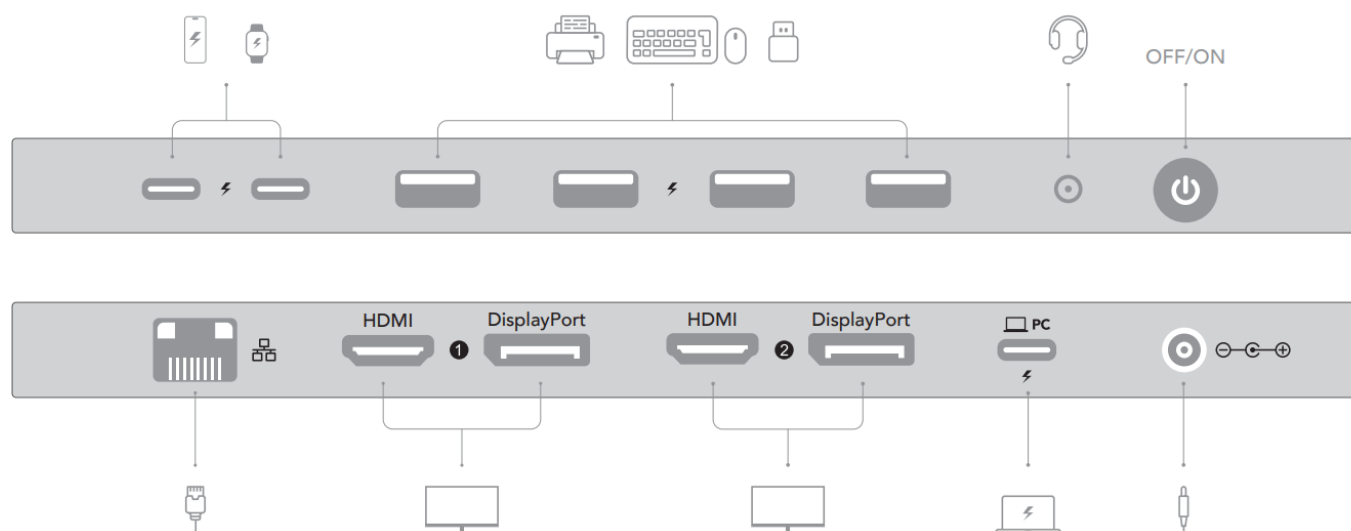
Q: How to fix if there is no audio from the audio jack?

A: Open the audio settings in your system and select the USB audio as the output.

Q: How to fix the black screen on streaming platforms?

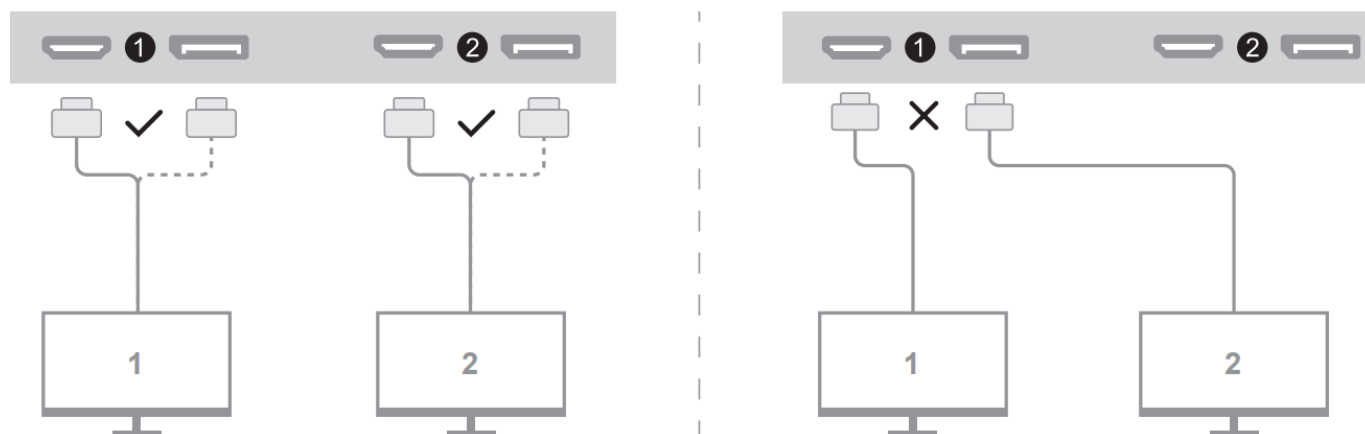
A: Open the settings panel of your browser, and disable Hardware Acceleration. Change the browser if the issue persists.

Ports Overview



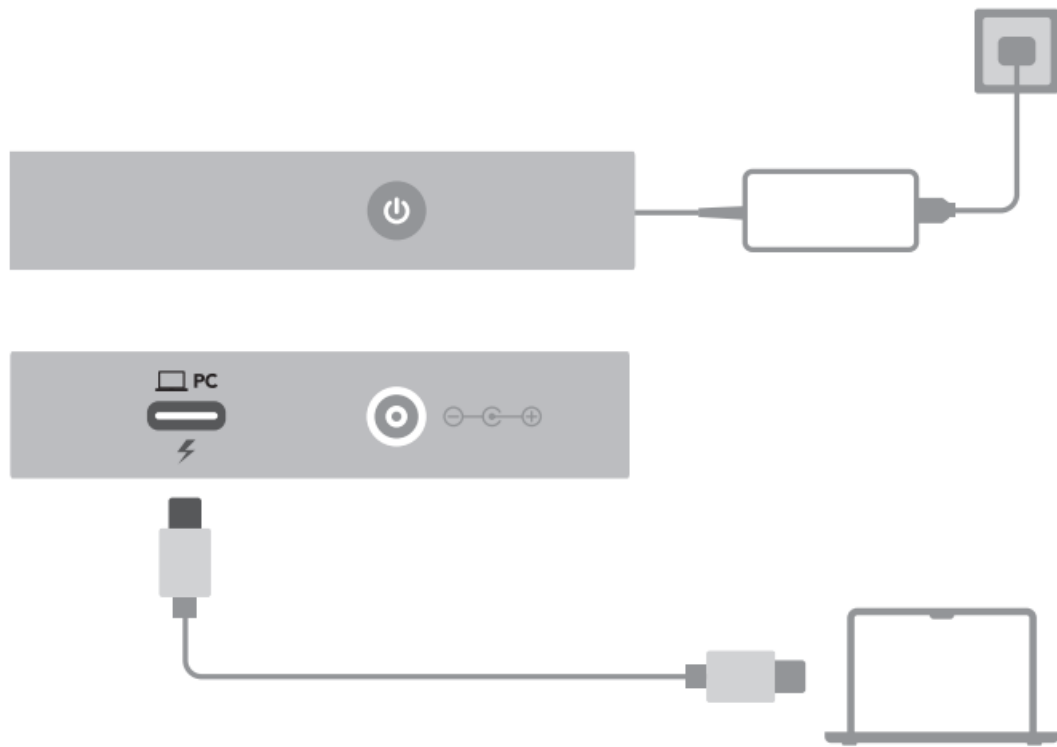
Connect Monitors

When connecting two monitors, plug one cable in zone 1 and another in zone 2.



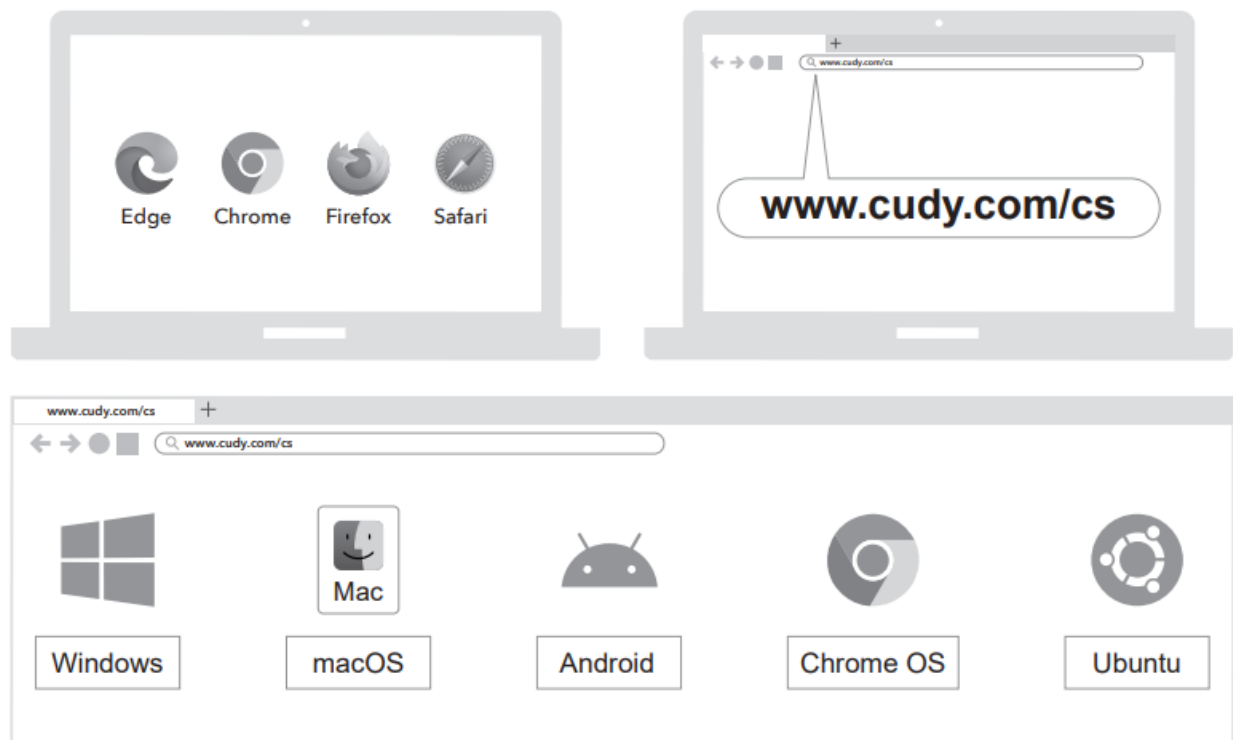
Power on and Connect Your Host Device

Please use the "PC" port on the back of the docking station and the host's port that accepts PD charging.



Download Drivers

- Visit www.cudy.com/cs, and you will see the DisplayLink driver page. Follow the pictures to download the driver.
- Users of Windows 10/11 or ChromeOS R51+ may skip steps 4 and 5, as the installation will complete automatically when the system is connected to the Internet.

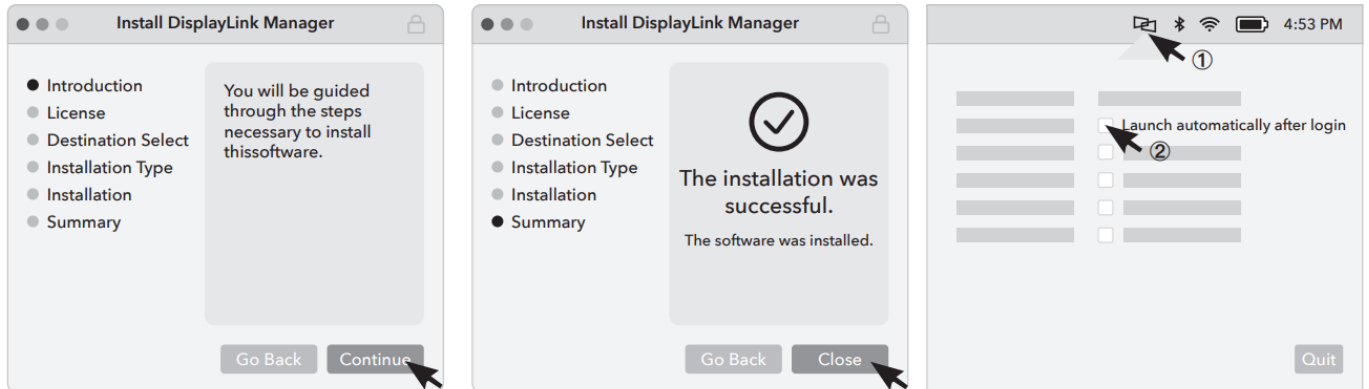


- **Note:** If you are not using the latest OS, you may find the driver for legacy versions by clicking on "Legacy Release."



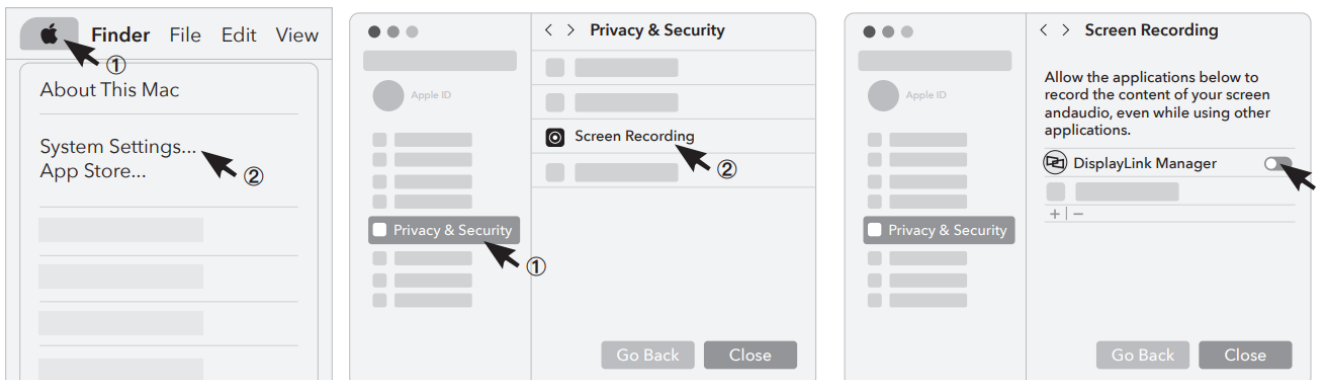
Install the Driver

Double-click the downloaded file and complete the installation. Give “screen recording” permission if required.



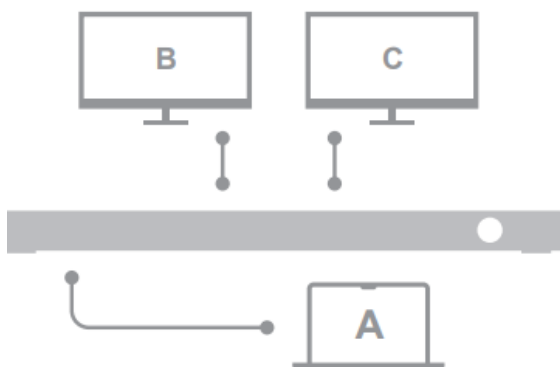
macOS only

- **macOS user:** If you accidentally rejected the permission request or the external monitor doesn't light up, follow the pictures to give the permission.
- **Android user:** if you accidentally rejected the permission request, please unplug the cable and plug in again to let the request pop up.



Configure Monitor Settings

Scan the QR code to learn how to configure Extend/Mirror modes on different systems.



www.cudy.com/qr_cs_display

FAQ

How to fix if there is no audio from the audio jack?

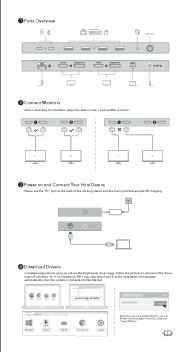
A: Please open the audio settings in your system and select the “USB audio” as the output.

How to fix the black screen on Netflix, Hulu, Crunchyroll, Disney+, etc. platforms?

A: Please open the settings panel of the browser you use to access the streaming websites. Find the “Hardware Acceleration” item and turn it off. Change browser if not successful. This method may not be effective on some systems.

- www.cudy.com
- support@cudy.com
- www.cudy.com/cs

Documents / Resources

	<p>cudy CS700 Dual 4K 10 Gbps USB-C Dock [pdf] User Guide 1.0, CS700 Dual 4K 10 Gbps USB-C Dock, CS700, Dual 4K 10 Gbps USB-C Dock, 4K 10 Gbps USB-C Dock, 10 Gbps USB-C Dock, USB-C Dock, Dock</p>
--	---

References

- [Cudy, Your Home and Business Networking Solutions Provider](#)
- [DisplayLink Downloads | Synaptics](#)
- [How to configure multiple monitors on Mac, Windows, Ubuntu, and Chrome – Cudy](#)
- [User Manual](#)

Manuals+, Privacy Policy

This website is an independent publication and is neither affiliated with nor endorsed by any of the trademark owners. The "Bluetooth®" word mark and logos are registered trademarks owned by Bluetooth SIG, Inc. The "Wi-Fi®" word mark and logos are registered trademarks owned by the Wi-Fi Alliance. Any use of these marks on this website does not imply any affiliation with or endorsement.