

**cudy**  
**CS700 13 IN 1**  
**10Gbps USB C**  
**Dual 4K Docking**  
**Station**



## cudy CS700 13 IN 1 10Gbps USB C Dual 4K Docking Station Installation Guide

[Home](#) » [cudy](#) » cudy CS700 13 IN 1 10Gbps USB C Dual 4K Docking Station Installation Guide 

### Contents

- [1 cudy CS700 13 IN 1 10Gbps USB C Dual 4K Docking Station](#)
- [2 Product Specifications](#)
- [3 FAQ](#)
- [4 Power And Connections](#)
- [5 Download The Driver](#)
- [6 Contact](#)
- [7 Documents / Resources](#)
  - [7.1 References](#)



### cudy CS700 13 IN 1 10Gbps USB C Dual 4K Docking Station



### Product Specifications

- **Model Number:** 810600211
- **Supported Operating Systems:** Windows 10/11, ChromeOS R51+

- **Ports:** PC port, Host port with PD charging support
- **Website:** [www.cudy.com](http://www.cudy.com)
- **Email Support:** [support@cudy.com](mailto:support@cudy.com)

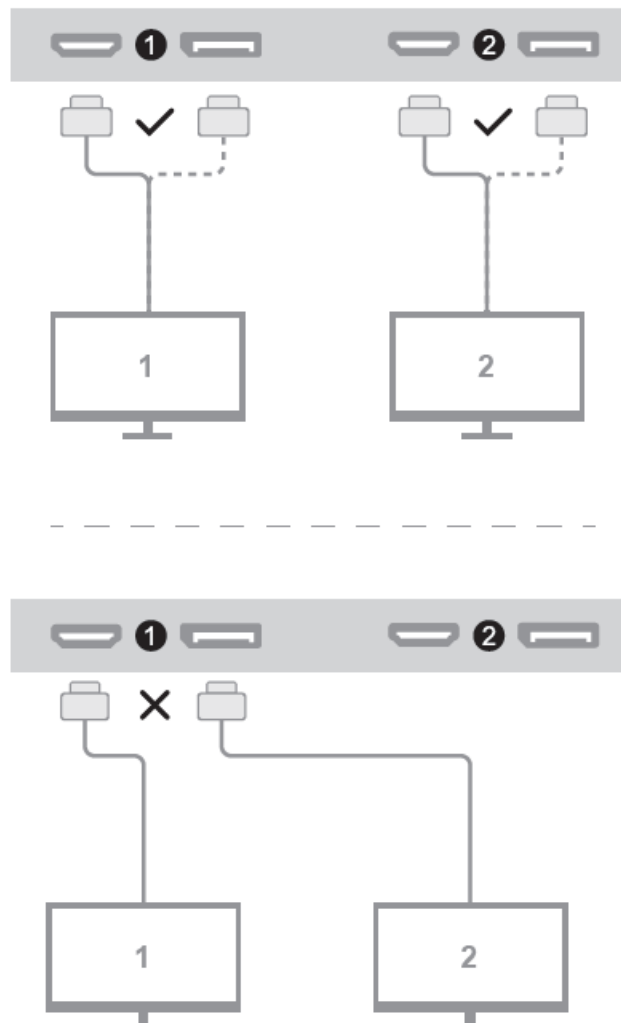
## FAQ

### Frequently Asked Questions

- **Q:** Can I connect this docking station to a Mac computer?
  - **A:** This docking station is designed for use with Windows 10/11, ChromeOS R51+, and may not be compatible with Mac computers.
- **Q:** Is it possible to connect more than two monitors using this docking station?
  - **A:** This docking station supports connection to two monitors only, one in zone 1 and another in zone 2.
- **Q:** What should I do if the driver installation does not start automatically?
  - **A:** If the driver installation does not start automatically, please visit [www.cudy.com/cs](http://www.cudy.com/cs) and follow the manual installation instructions provided.

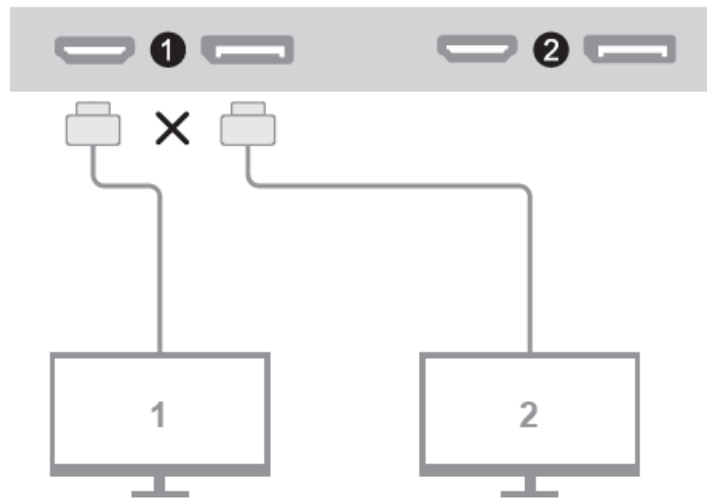
## Power And Connections

### Connect Monitors



- When connecting two monitors, plug one cable in zone 1 and another in zone 2.

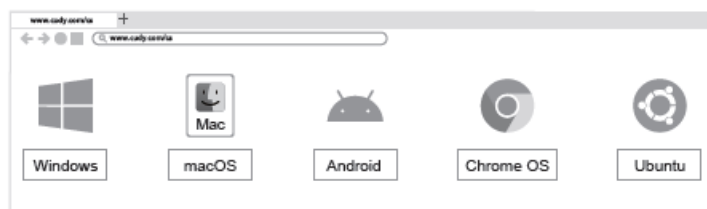
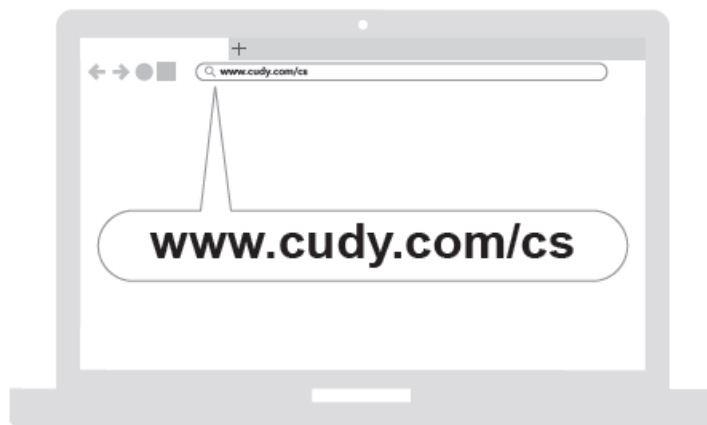
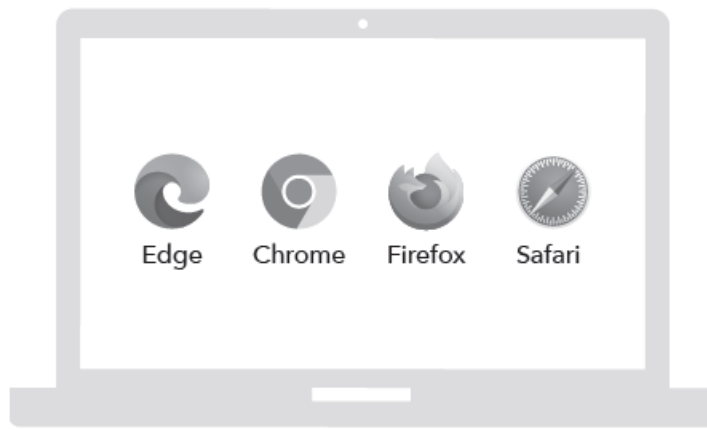
### Power on and Connect Your Host Device



- Please use the PC port on the back of the docking station and the host's port that accepts PD charging.

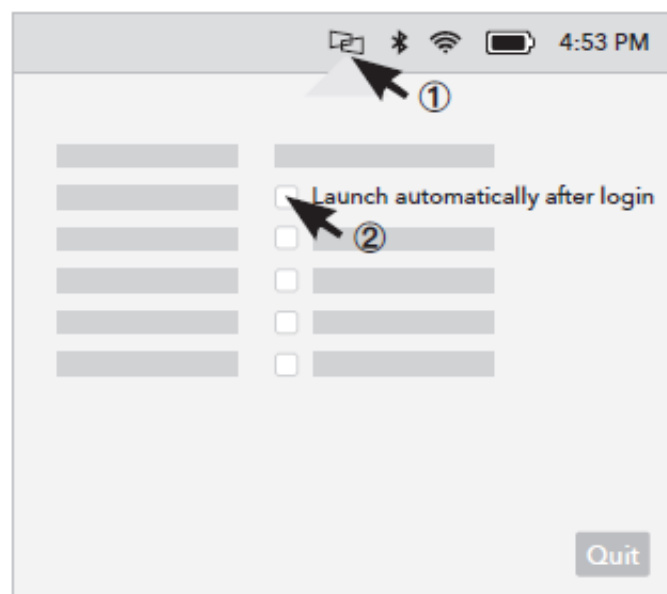
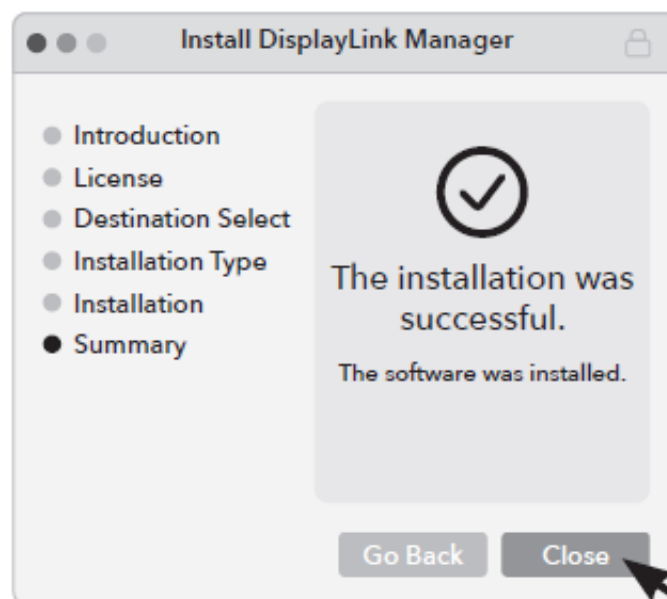
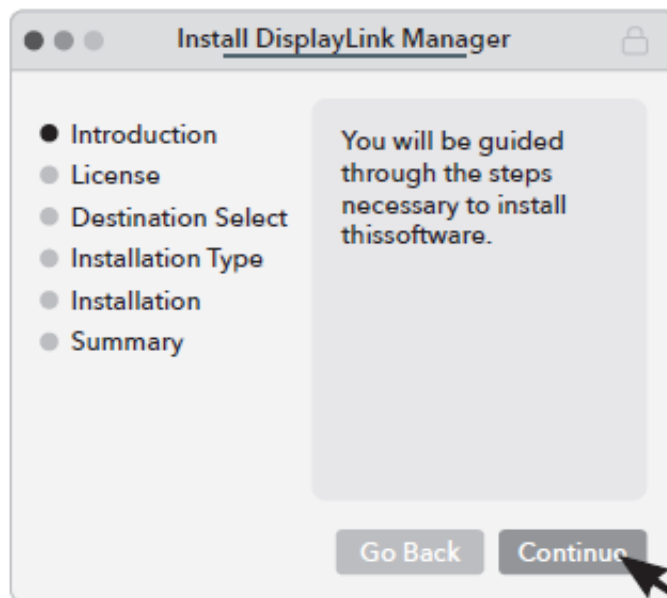
### Download The Driver

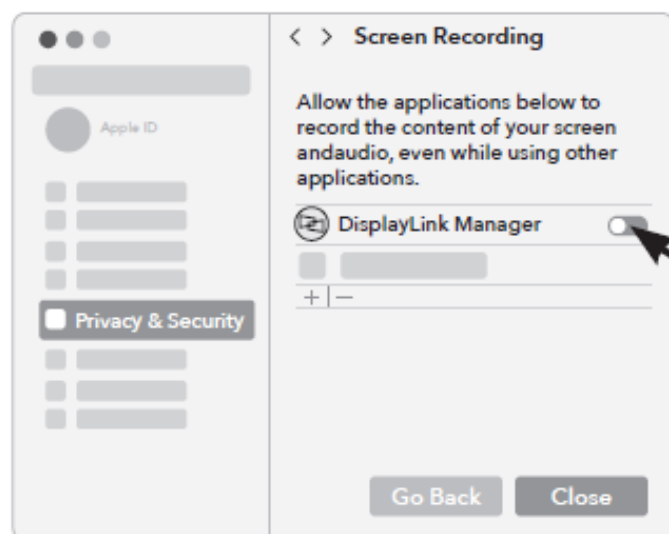
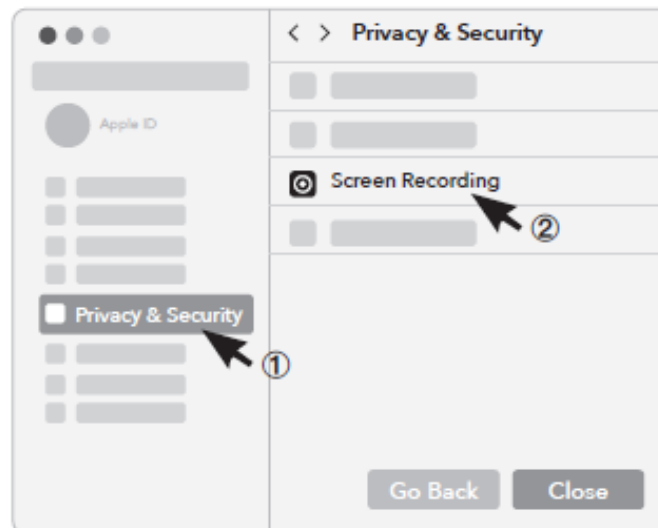
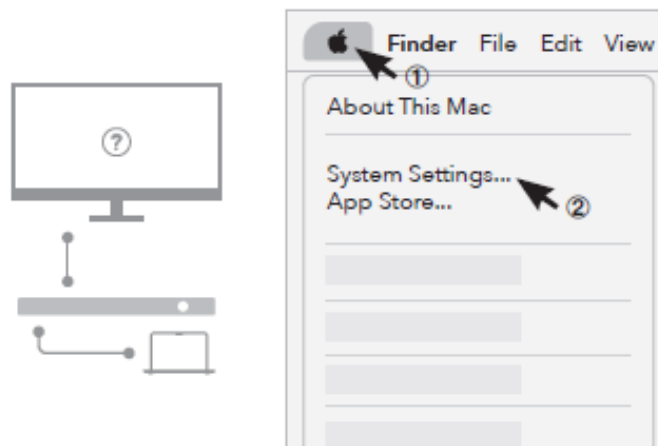
- Visit [www.cudy.com/cs](http://www.cudy.com/cs), and follow the pictures to download the driver.
- Users of Windows 10/11 or ChromeOS R51+ may skip step 3 and 4, as the installation will complete automatically when the system is connected to the Internet.



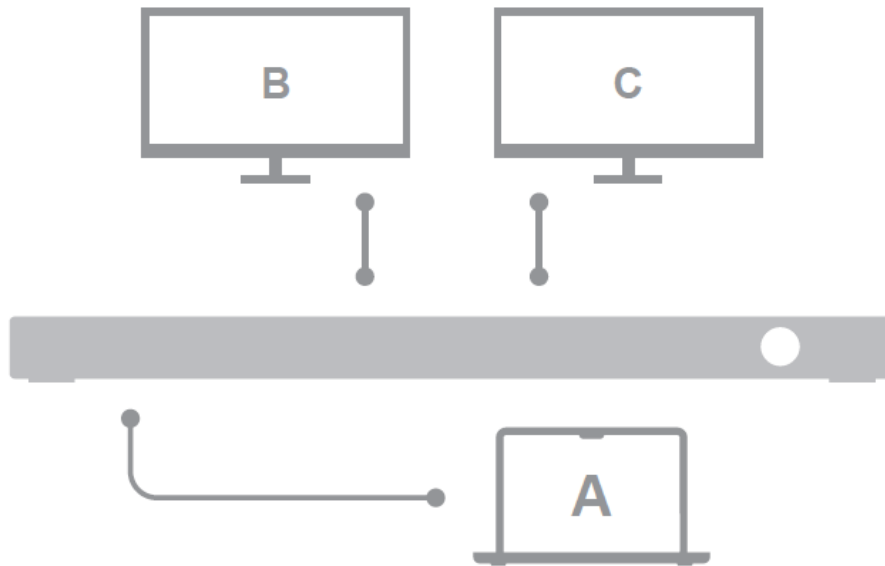
- [www.cudy.com/cs](http://www.cudy.com/cs)

**Install DisplayLink Manager**





**More Information**



## Contact

### Scan



- [www.cudy.com/qr\\_cs\\_display](http://www.cudy.com/qr_cs_display)

## NEED TECH HELP?

- Website: [www.cudy.com](http://www.cudy.com)
- Email: [support@cudy.com](mailto:support@cudy.com)
- Driver & Manual: [www.cudy.com/download](http://www.cudy.com/download)
- Support: For technical support, the user guide and more information, please visit: <https://www.cudy.com/support>



## Documents / Resources



[cudy CS700 13 IN 1 10Gbps USB C Dual 4K Docking Station](#) [pdf] Installation Guide  
CS700 13 IN 1 10Gbps USB C Dual 4K Docking Station, CS700, 13 IN 1 10Gbps USB C Dual 4  
K Docking Station, 1 10Gbps USB C Dual 4K Docking Station, USB C Dual 4K Docking Station,  
Dual 4K Docking Station, 4K Docking Station, Docking Station, Station

## References

- [Cudy, Your Home and Business Networking Solutions Provider](#)
- [DisplayLink Downloads | Synaptics](#)
- [Download Search – Cudy](#)
- [How to configure multiple monitors on Mac, Windows, Ubuntu, and Chrome – Cudy](#)
- [Contact Us – Cudy](#)
- [User Manual](#)

[Manuals+.](#) [Privacy Policy](#)

This website is an independent publication and is neither affiliated with nor endorsed by any of the trademark owners. The "Bluetooth®" word mark and logos are registered trademarks owned by Bluetooth SIG, Inc. The "Wi-Fi®" word mark and logos are registered trademarks owned by the Wi-Fi Alliance. Any use of these marks on this website does not imply any affiliation with or endorsement.