

cudy AX3000 Wi-Fi 6 Mesh 2.5G Solution



cudy AX3000 Wi-Fi 6 Mesh 2.5G Solution Installation Guide

[Home](#) » [cudy](#) » cudy AX3000 Wi-Fi 6 Mesh 2.5G Solution Installation Guide 

Contents

- [1 cudy AX3000 Wi-Fi 6 Mesh 2.5G Solution](#)
- [2 Product Information](#)
- [3 Product Usage Instructions](#)
- [4 Set up](#)
- [5 Cudy APP](#)
- [6 Documents / Resources](#)
 - [6.1 References](#)

cudy

cudy AX3000 Wi-Fi 6 Mesh 2.5G Solution



Product Information

Specifications:

- **Brand:** Cudy
- **Model:** Mesh Network System
- **Wireless Standard:** Wi-Fi 5 (802.11ac)
- **Ports:** Ethernet LAN port

Product Usage Instructions

Setting up the Mesh Network:

1. Power off your modem.
2. Connect the power adapter to a Mesh unit from the package and wait for the indicator light to turn solid on.
3. Use an Ethernet cable to connect port 1 of the Mesh unit to your DSL/Cable Modem or Ethernet wall outlet.
4. Power on the modem.
5. Configure the first Mesh unit by following the steps below.

Configuring the Mesh Unit:

1. Choose a device (phone/laptop/tablet) and connect it to the Mesh unit via Wi-Fi or Ethernet cable.
2. Locate the default Wi-Fi name and password printed on the bottom of the Mesh unit.
3. Open a web browser and follow the on-screen instructions to configure the router settings.

Frequently Asked Questions (FAQ)

- **Q: Where can I find technical support for Cudy products?**

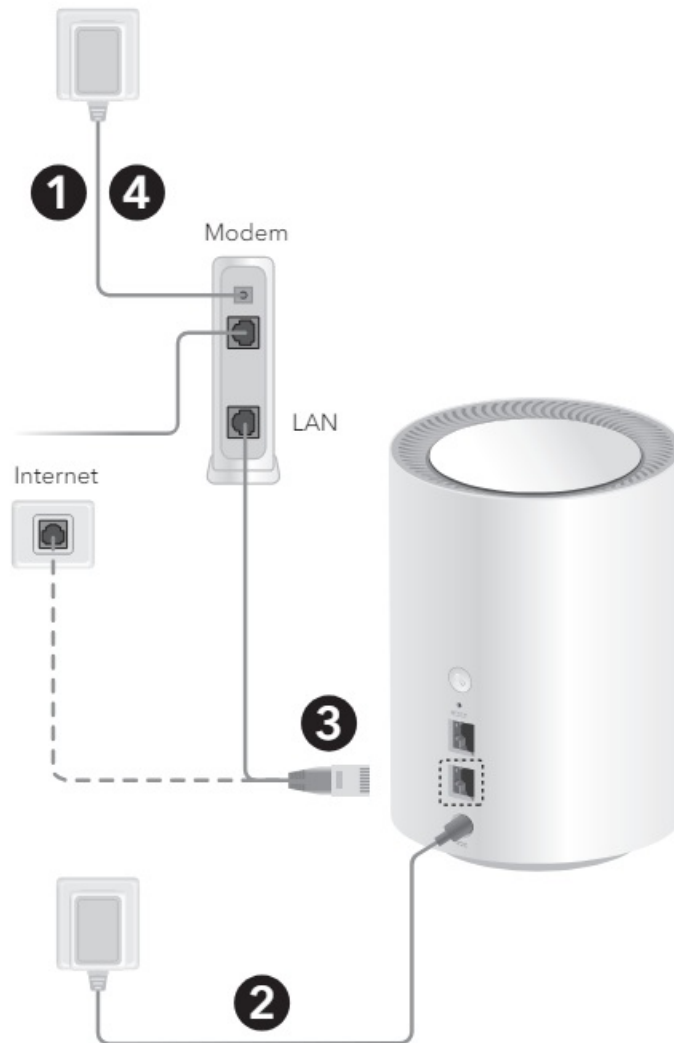
A: For technical support, user guides, and more information, visit [Cudy Support](#). You can also reach out via email at support@cudy.com.

- **Q: How do I add more units to expand my Cudy Mesh network?**

A: To add more units to your Cudy Mesh network, follow the same steps as configuring the first Mesh unit. Connect additional units using Ethernet cables and configure them through a web browser as instructed.

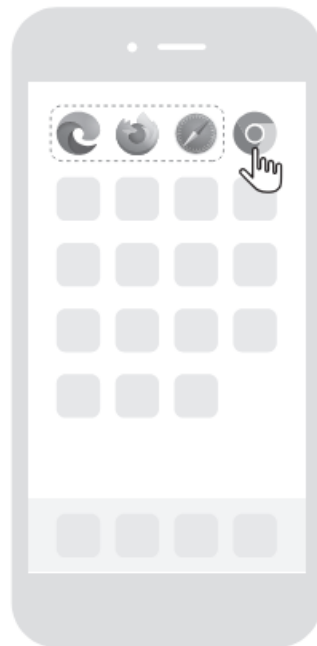
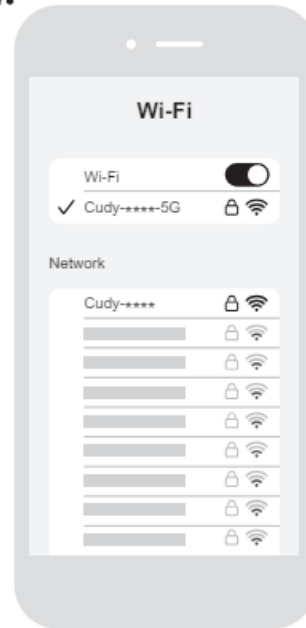
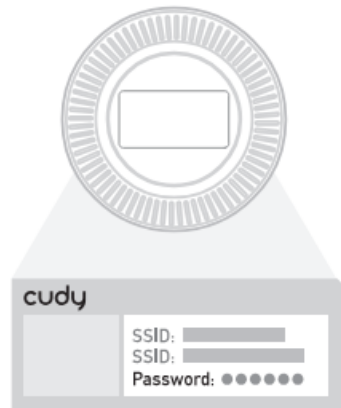
Set up

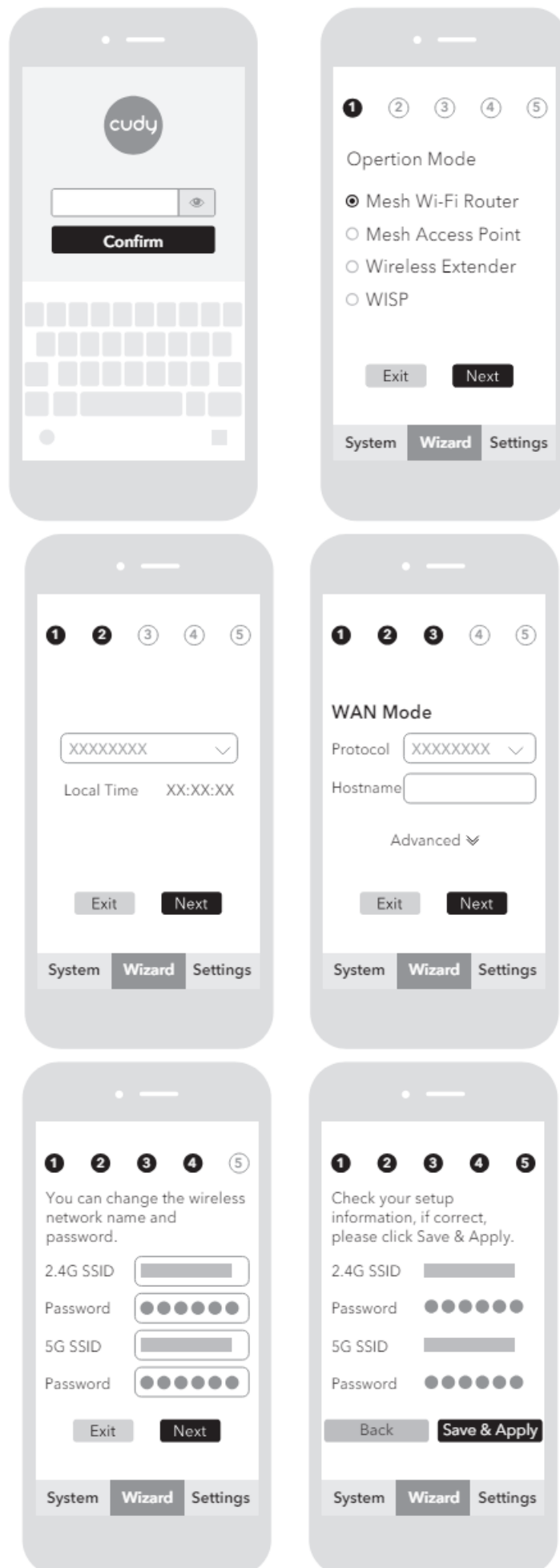
1. Power off the modem if you have one.
2. Pick a Mesh unit from the package and connect its power adapter to it. Wait for its system indicator light to turn solid on.
3. Use an Ethernet cable to connect port 1 of the Mesh unit to your DSL/Cable Modem or the Ethernet wall outlet.
4. Power on the modem that you just turned off.



5. Configure the first Mesh unit.

5





Choose one of your phones/laptops/tablets and connect it to the Mesh unit via Wi-Fi or an Ethernet cable. The

default Wi-Fi name and password are printed on the bottom of the Mesh unit.

Open a browser and follow the pictures to configure the router.

6. Connect the new Wi-Fi you just created and try accessing the Internet.



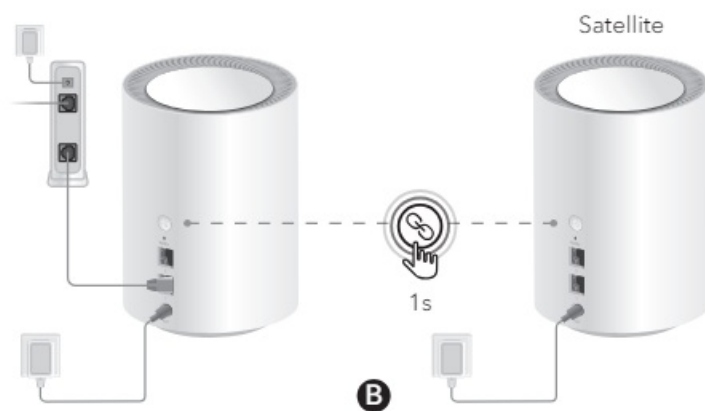
Note: if the network is still not ready, contact your ISP or support@cudy.com for help.

7. Add satellite Mesh units. Place the new Mesh units near the one that is already connected to the Internet.

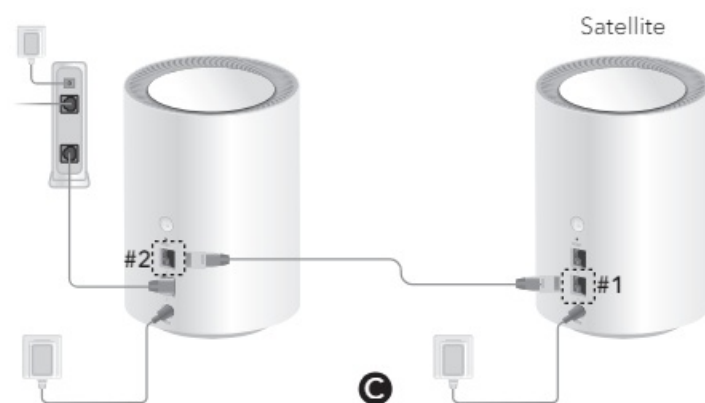
Power the new units and wait for their system indicator light to turn solid white.

- **A:** The same package's units will pair automatically once booted up.

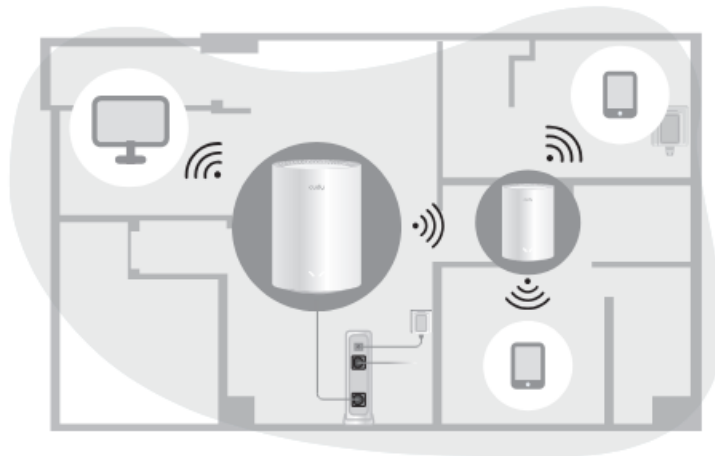
7



- **B:** For Mesh units not from the same package, please press their PAIR buttons to complete pairing. Please wait their system indicators light to turn solid white and then add another one.
- **C:** You may pair units by connecting port 2 on the main node to port 1 of the satellite node via an Ethernet cable.



8. Move the newly added units to the middle between the main unit and the WiFi deadzone.



Cudy APP



NEED TECH HELP?

- Website: www.cudy.com
- Email: support@cudy.com
- Driver & Manual: www.cudy.com/download
- Support

For technical support, the user guide and more information, please visit: <https://www.cudy.com/support>

Documents / Resources

	<p>cudy AX3000 Wi-Fi 6 Mesh 2.5G Solution [pdf] Installation Guide AX3000 Wi-Fi 6 Mesh 2.5G Solution, AX3000, Wi-Fi 6 Mesh 2.5G Solution, Mesh 2.5G Solution</p>
--	---------------------------------------------------------------------------------------------------------------------------------------------------------------------------------------

References

- [Cudy, Your Home and Business Networking Solutions Provider](#)
- [Download Search – Cudy](#)
- [User Manual](#)