



cudy AX3000 Range Extender Installation Guide

[Home](#) » [cudy](#) » cudy AX3000 Range Extender Installation Guide 

Contents

- [1 cudy AX3000 Range Extender](#)
- [2 Specifications](#)
- [3 Product Usage Instructions](#)
- [4 Frequently Asked Questions \(FAQ\)](#)
- [5 NEED TECH HELP?](#)
- [6 SETTING UP](#)
- [7 Documents / Resources](#)
 - [7.1 References](#)



cudy AX3000 Range Extender



Specifications

- **Brand:** Cudy
- **Model:** Wi-Fi Range Extender
- **Supported Networks:** 2.4GHz, 5GHz
- **Wireless Standard:** 802.11b/g/n/ac
- **Ports:** LAN1, LAN2, LAN3, LAN4, WAN
- **Support:** WPS for easy setup

Product Usage Instructions

Plug in the Extender:

Plug the extender into a socket near your router and wait for it to boot up.

Pair with Router:

- **Method A:** Press the WPS buttons on your router and the extender, then wait for the LED to light up.
- **Method B:** Connect your computer or phone to the extender's Wi-Fi and set it up in your browser following the provided steps.

Connect Devices:

Connect your device to the extended Wi-Fi network to access the internet. The default password for the extended network is the same as your original network.

Relocate Extender:

Relocate the extender between the existing Wi-Fi coverage area and where you want to expand the signal for optimal performance.

Frequently Asked Questions (FAQ)

What should I do if the LED indicator does not light up during pairing?

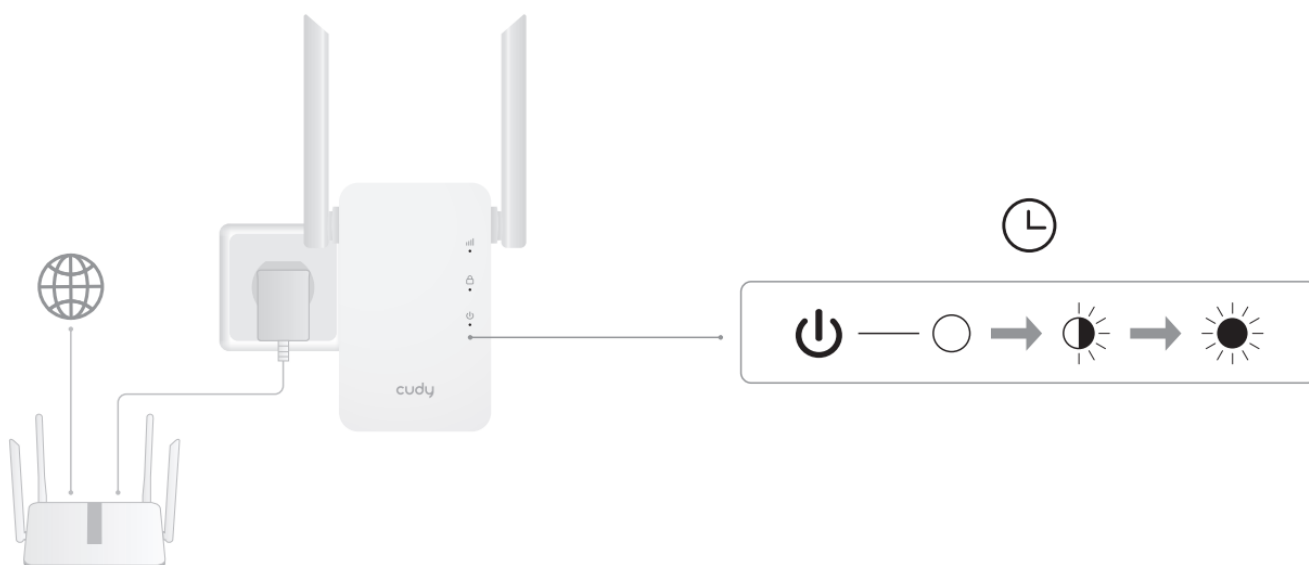
Try resetting both your router and extender, then attempt the pairing process again following the instructions.

NEED TECH HELP?

- www.cudy.com/qr_vg_re
- www.cudy.com
- support@cudy.com
- www.cudy.com/download

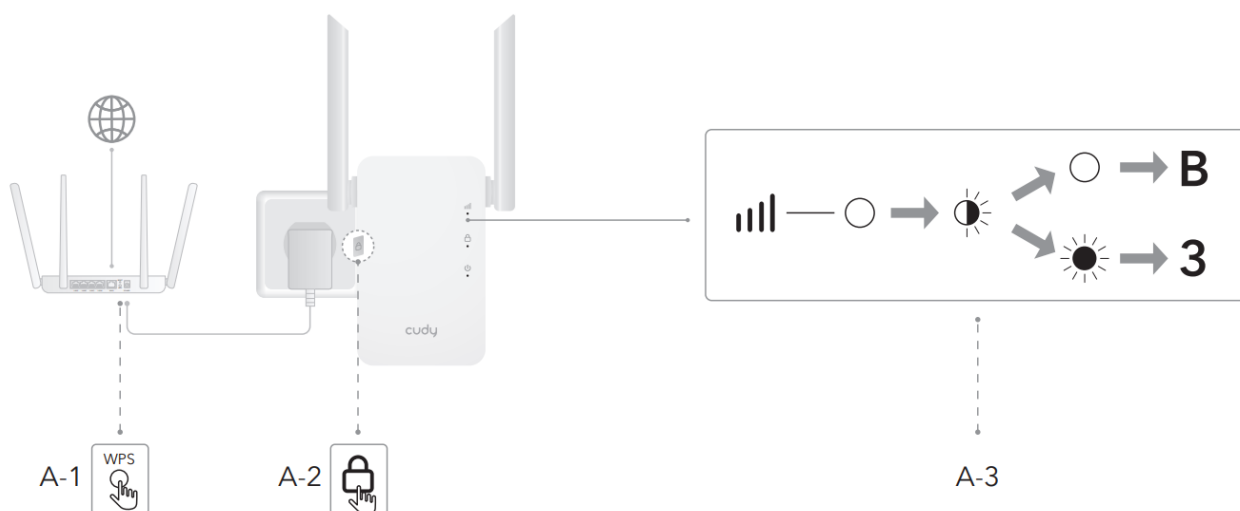
SETTING UP

1. Plug the extender into the socket near your router and wait for it to boot up.

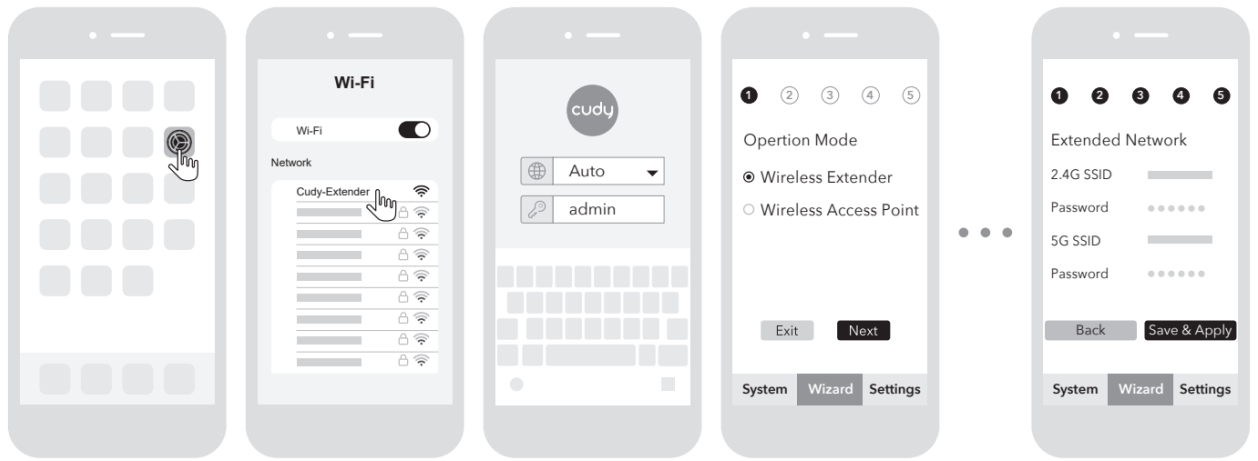


2. Pair the extender with your router using method A or B.

- Press the WPS buttons on your router and then the extender, and wait for the LED to light up.

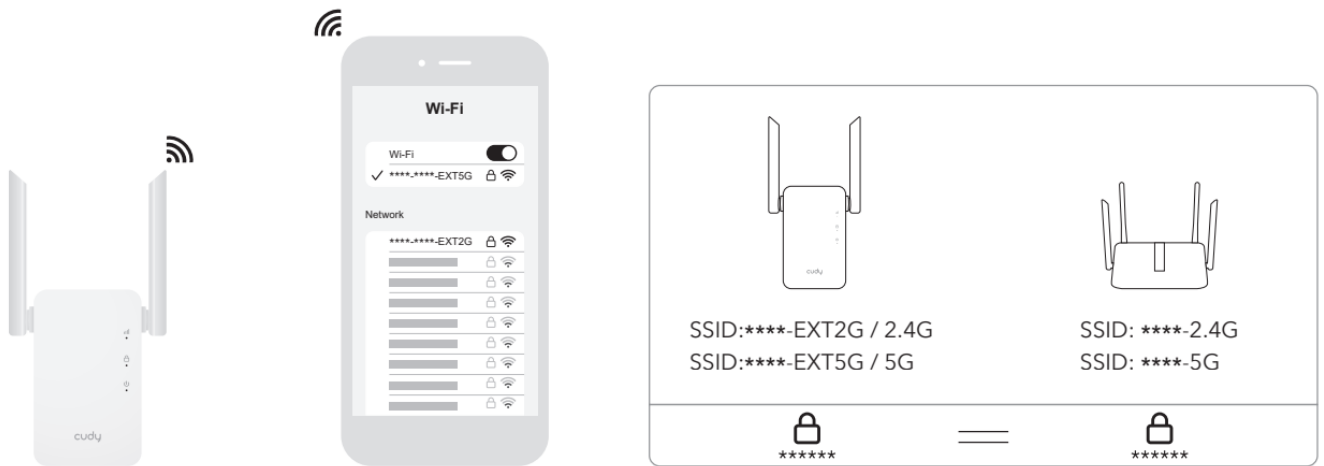


- Connect your computer or phone to the extender's Wi-Fi and set it up in your browser. Follow the steps shown in the pictures.

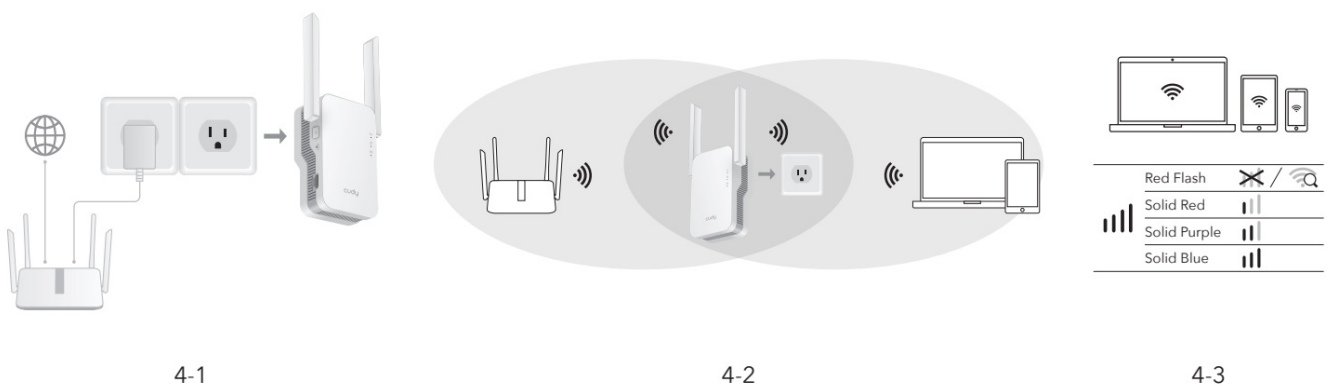


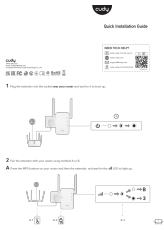
3. Connect your device to the extended Wi-Fi and try accessing the Internet. By default, the password for the extended network will be the same as the original network.

Note: If you paired the extender with a “Cudy Mesh” device by pressing the WPS buttons, the Wi-Fi name will be the same as the original Wi-Fi.



4. Relocate the extender between the Wi-Fi coverage area and the area where you want to expand the Wi-Fi signal.



	cudy AX3000 Range Extender [pdf] Installation Guide AX3000 Range Extender, AX3000, Range Extender, Extender
--	--

References

- [C Home Page | Cudy](#)
- [User Manual](#)

[Manuals+](#), [Privacy Policy](#)

This website is an independent publication and is neither affiliated with nor endorsed by any of the trademark owners. The "Bluetooth®" word mark and logos are registered trademarks owned by Bluetooth SIG, Inc. The "Wi-Fi®" word mark and logos are registered trademarks owned by the Wi-Fi Alliance. Any use of these marks on this website does not imply any affiliation with or endorsement.