



# CUCKOO 100752102 Compact Automatic Bread Maker Instructions

[Home](#) » [CUCKOO](#) » CUCKOO 100752102 Compact Automatic Bread Maker Instructions

CUCKOO 100752102 Compact Automatic Bread  
Maker Instructions



## BEFORE THE FIRST USE

Wash and dry bread pan and kneading paddle.

**Note:** Do not use metal utensils in bread pan as they may ruin the non-stick surface.

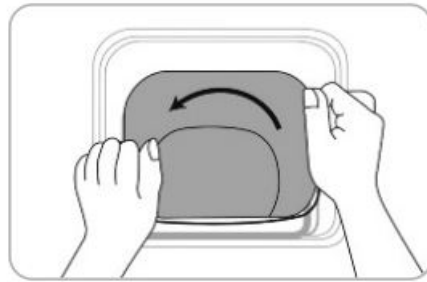
**CAUTION!** Falling Object Hazard. Bread maker can wobble and walk during kneading cycle. Always position it in the center of counter away from the edge.

1. Check for any missing or damaged parts.
2. Clean all the parts according to "CLEANING AND MAINTENANCE".
3. Set the bread maker on bake mode and let it run on empty for about 10 minutes. Once you let it cool, clean all the detached parts again. The appliance may emit a little smoke and/or odor when you turn it on after the first time. This is normal, and it will subside after the first or second use. Make sure the appliance has sufficient ventilation.

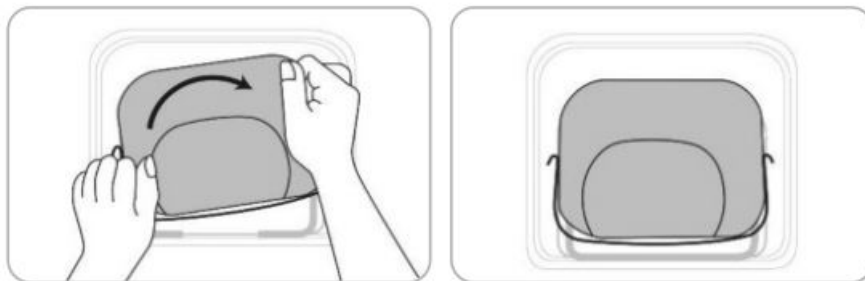
4. Once you dry all parts thoroughly and assemble them, the appliance is ready for use

## HOW TO ASSEMBLE THE BREAD PAN

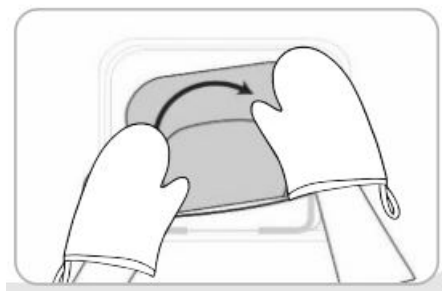
1. To use the bread pan handle, turn the bread pan counter-clockwise, then pull it out of the device.



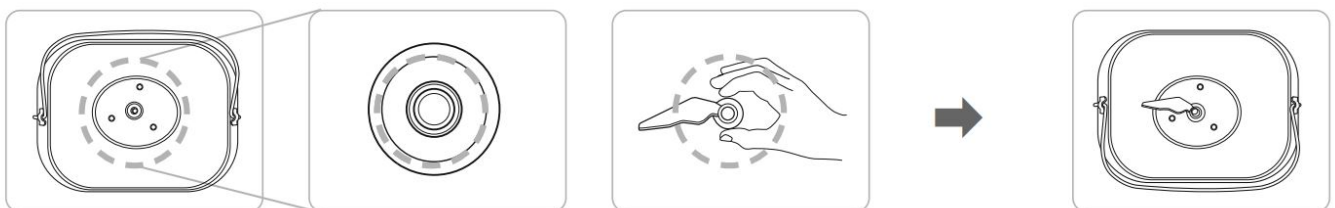
2. Place the bread pan back into the bread maker. Ensure the pan is firmly locked into place by turning it clockwise. Then, close the lid.



**CAUTION :** Be careful as the product may be hot.



3. Push the kneading paddle onto the drive shaft inside the bread pan.

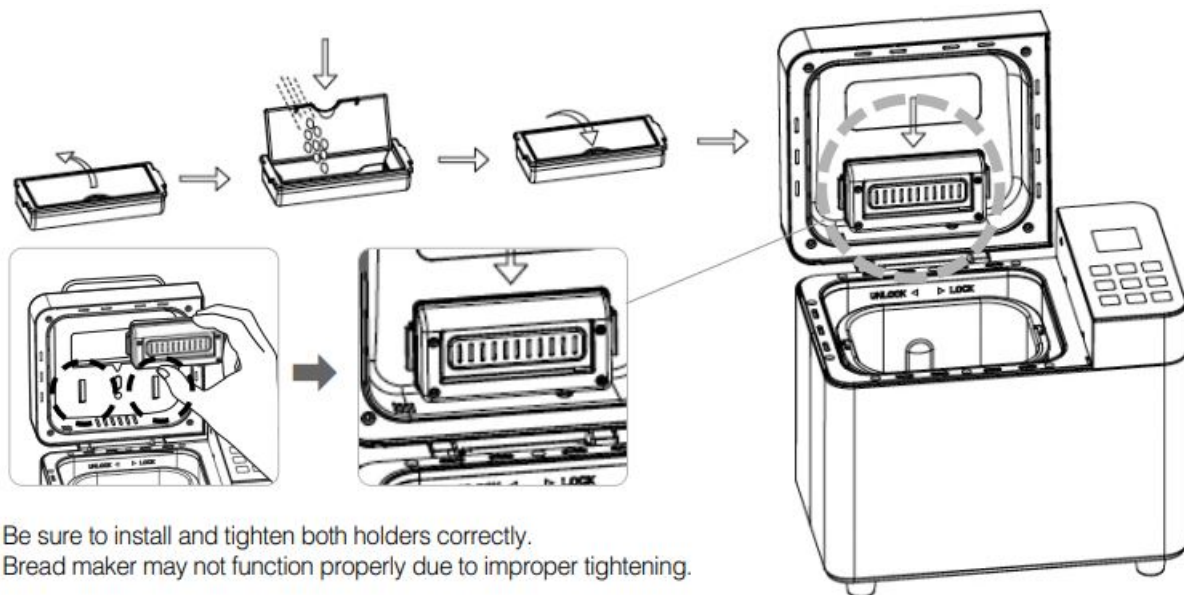


# CUCKOO

## HOW TO USE NUT DISPENSER AND REMOVE BREAD FROM PAN

### Using the fruit & nut dispenser

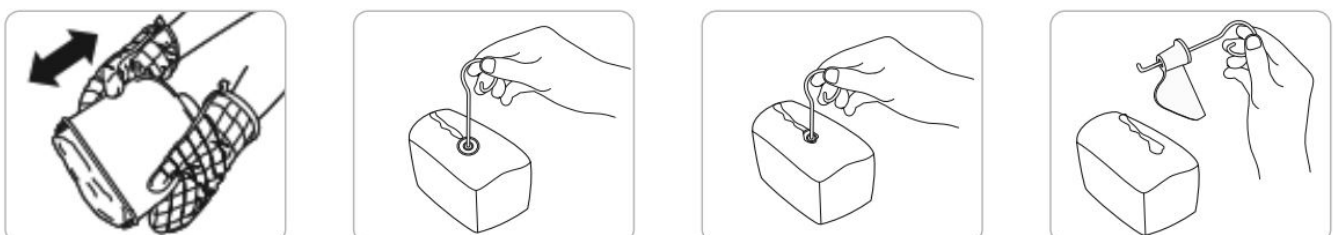
If you wish to add nuts or seeds to your loaf, it is not recommended to dispense them into the flour at first preparation. This may cause the nuts or seeds to lose flavor and texture due to over stirring. The automatic dispenser function will help you add fruits, nuts, raisins, or other add-ins without waiting by the bread maker. Pour the nuts or seeds in the dispenser, then install it below the lid. After installation, close the lid and start the program. After approximately 30 minutes (time may differ) of baking, the nut dispenser will operate 3 times. To ensure all contents are dispensed, the dispenser will push the bottom cover open. The dispensing function is automatically set in menus 1-7 and 13.



### REMOVING BREAD

Oven mitts should be used as the bread pan and baking chamber will be hot. To remove the bread pan, lift the handle, turn it counterclockwise to unlock, and lift the pan straight up from the base of the chamber. After you remove the pan, carefully shake the bread upside down until it falls out. Let the bread cool on a wire rack for 10 minutes before you slice it with a bread knife.

**TIP:** If the kneading paddle is stuck in the loaf, remove it with a hook (or kneading paddle remover).



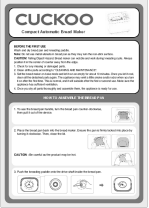
TIP : If needed, when the paddle signal alerts, pause the unit by pressing the START/STOP button. After pausing, remove the dough and kneading paddle, reshape the dough, and replace the bread pan. To continue, press the START/STOP button

Contents [ [hide](#)

1 Documents / Resources

2 Related Posts

Documents / Resources

	<div><a href="#">CUCKOO 100752102 Compact Automatic Bread Maker</a> [pdf] Instructions 100752102, Compact Automatic Bread Maker</div>
---	---