



cubetape C200 Series Compact Dimensioning Device User Guide

[Home](#) » [cubetape](#) » cubetape C200 Series Compact Dimensioning Device User Guide 



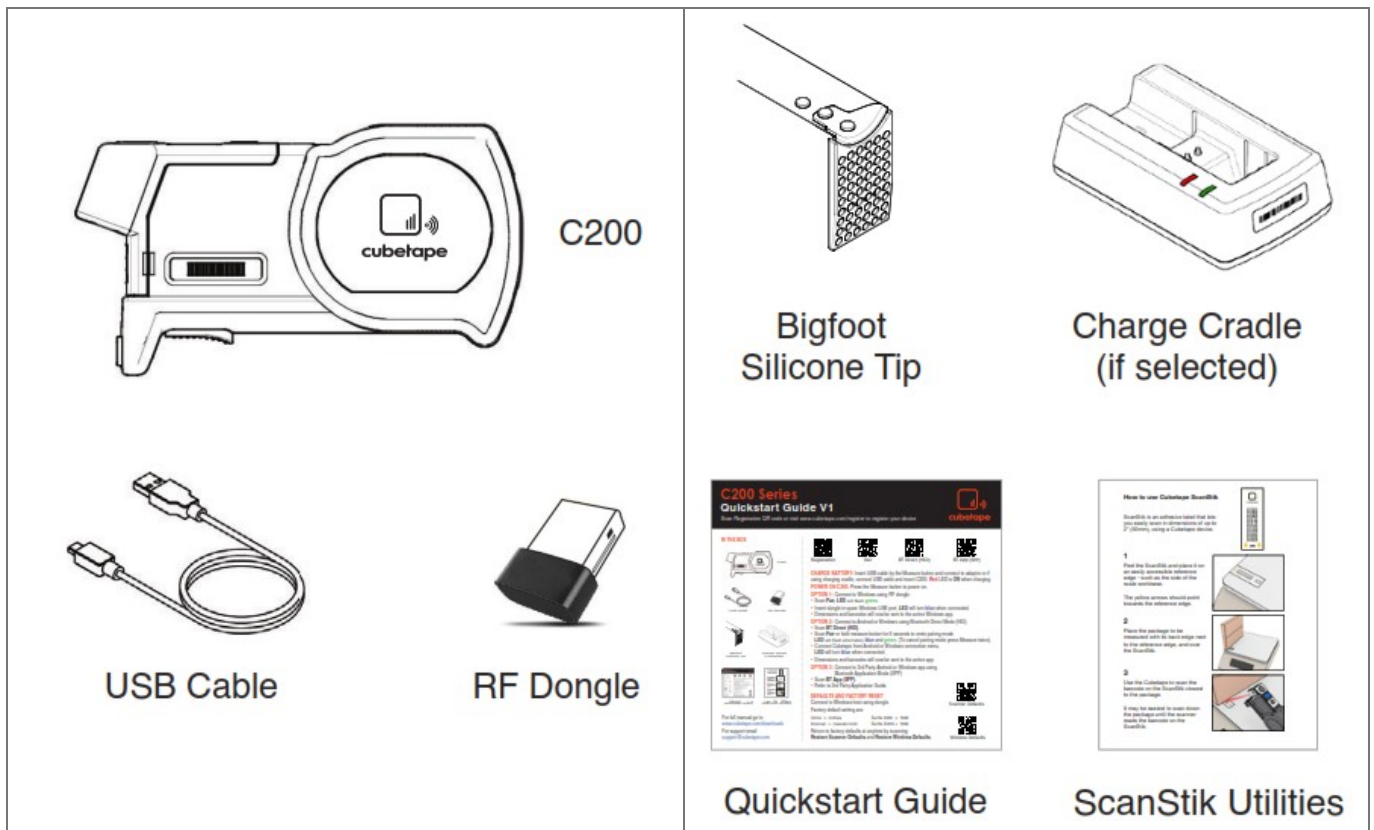
C200 Series Quick start Guide

Scan Registration QR code or visit www.cubetape.com/register to register your device





Contents

- [1 IN THE BOX](#)
- [2 DEFAULTS AND FACTORY RESET](#)
- [3 HOW TO MEASURE](#)
- [4 ASSEMBLY](#)
- [5 SET UNITS AND OUTPUTS](#)
- [6 SET SUFFIX](#)
- [7 Documents / Resources](#)
 - [7.1 References](#)
- [8 Related Posts](#)

IN THE BOX



For full manual go to www.cubetape.com/downloads
 For support email support@cubetape.com

 <p>Registration</p>	 <p>Pair</p>	 <p>BT Direct (HID)</p>	 <p>BT App (SPP)</p>
www.cubetape.com/register	<code>^%##^Code99</code>	<code>^%##^CodeAA</code>	<code>^%##^CodeAB</code>

CHARGE BATTERY: Insert USB cable by the Scan button and connect to adaptor or if using charging cradle, connect USB cable and insert C200. Red LED is ON when charging.

POWER ON C200: Press the Scan button to power on.

OPTION 1: Connect to Windows using RF dongle.

- Scan Pair, LED will flash green.
- Insert dongle in spare Windows USB port, LED will turn blue when connected.
- Dimensions and barcodes will now be sent to the active Windows app.

OPTION 2: Connect to Android or Windows using Bluetooth Direct Mode (HID).

- Scan BT Direct (HID).
- Scan Pair or hold Scan button for 6 seconds to enter pairing mode.
 LED will flash alternately blue and green. (To cancel pairing mode press Scan twice).

- Connect Cubetape from Android or Windows connection menu.
LED will turn blue when connected.
- Dimensions and barcodes will now be sent to the active app.

OPTION 3: Connect to 3rd Party Android or Windows app using Bluetooth Application Mode (SPP).

- Scan BT App (SPP).
- Refer to 3rd Party Application Guide.

DEFAULTS AND FACTORY RESET

Factory default settings are:

Connect to Windows host using dongle




Units = inches

Suffix DIM = TAB

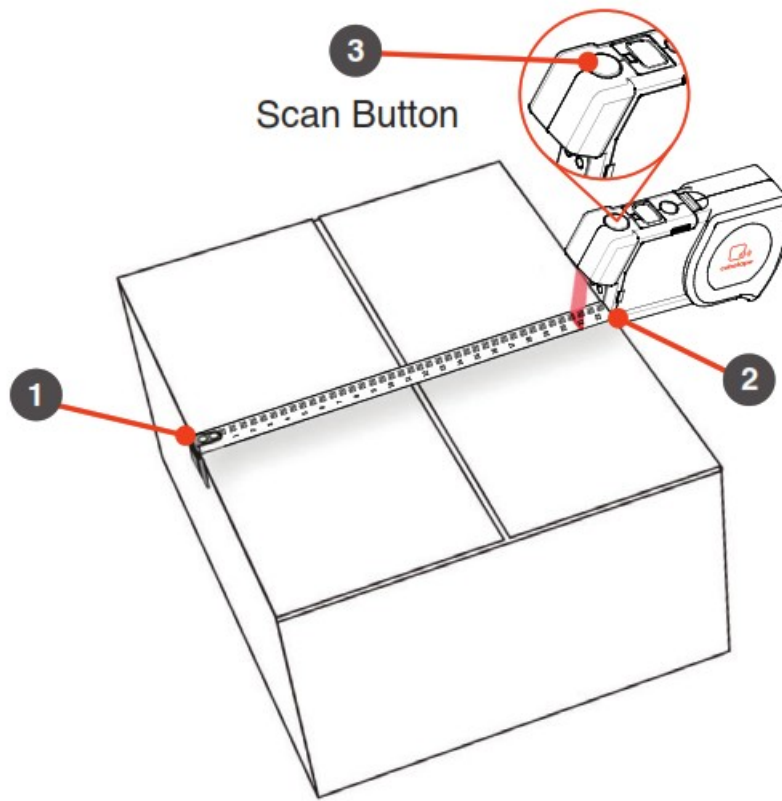
Output = nearest inch Suffix GEN = TAB

Return to factory settings anytime by scanning

Scanner Defaults and Wireless Defaults.

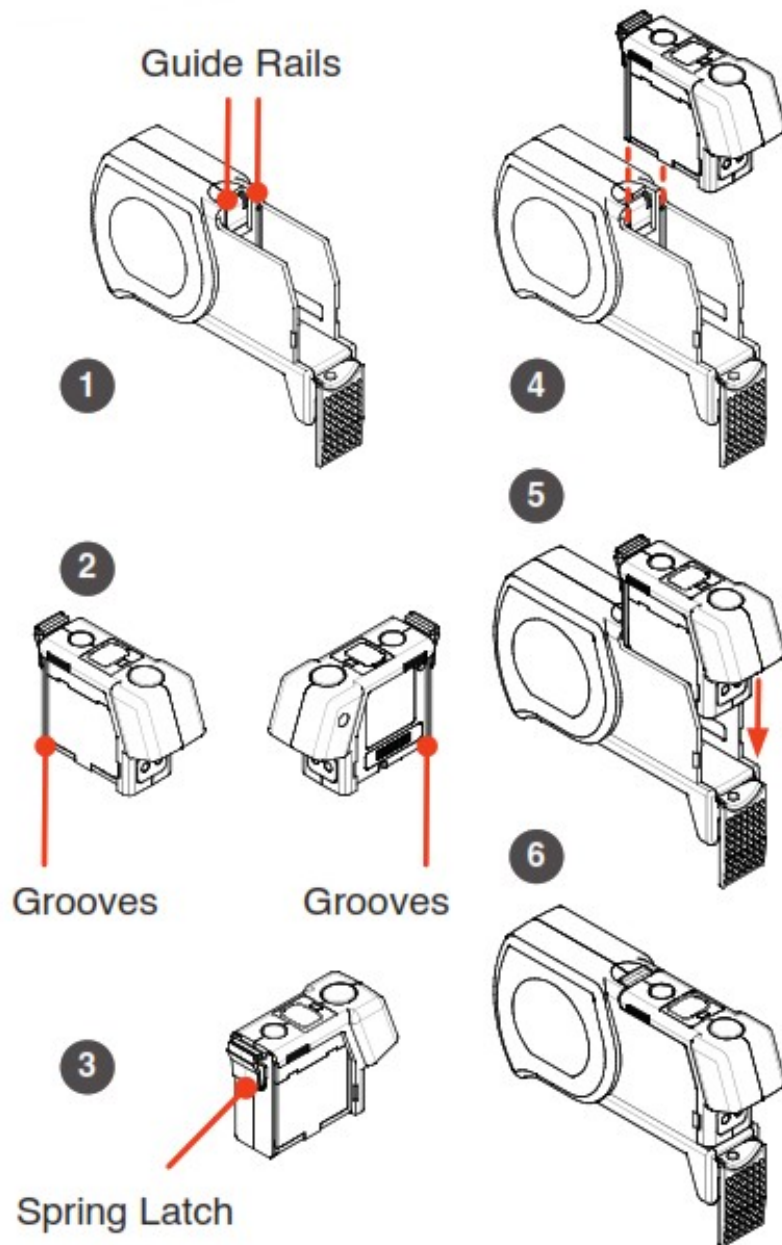
 <p>Shortcuts QR Charge Cradle also contains the Shortcuts QR Code on base.</p>	 <p>Scanner Defaults</p>	 <p>Wireless Defaults</p>
<p>https://cubetape.com/wp-content/uploads/2022/08/C200Series-Shortcuts.pdf</p>	<p>^#SC^303FFF1</p>	<p>^%%##^Code93</p>

HOW TO MEASURE



1. Hook the tape end over the far edge of the package.
2. Align the tape exit point to the near edge of the package.
3. Press the Scan button to record and transmit the measurement.






ASSEMBLY



1. The tape cassette has guide rails on both sides.
2. The C200 Pod has guide grooves on both sides.
3. Spring latch locks into the tape cassette.
4. Align grooves and rails.
5. C200 Pod slides down into the tape cassette.
6. The latch in the C200 Pod locks into the tape cassette.





SET UNITS AND OUTPUTS

Select preferred units – inches or cm and output.

 Units in	 Output 0.5	 Units cm
^#SC^A0A0103	^#SC^A0A0202	^#SC^A0A0101
 Output Nearest 1	 Output Next 1	
^#SC^A0A0203	^#SC^A0A0103	

SET SUFFIX

Select preferred suffix for use with
Dimensional (DIM) and General (GEN) items.

 Suffix Dim CR	 Suffix Gen CR	 Suffix Dim TAB	 Suffix Gen TAB
^#SC^A0A070D	^#SC^A0A090D	^#SC^A0A0709	^#SC^A0A0909

FCC warning statements:

This equipment has been tested and found to comply with the limits for a Class B digital device, pursuant to part 15 of the FCC Rules. These limits are designed to provide reasonable protection against harmful interference in a residential installation. This equipment generates, uses and can radiate radio frequency energy and, if not installed and used in accordance with the instructions, may cause harmful interference to radio communications. However, there is no guarantee that interference will not occur in a particular installation. If this equipment does cause harmful interference to radio or television reception, which can be determined by turning the equipment off and on, the user is encouraged to try to correct the interference by one or more of the following measures:

- Reorient or relocate the receiving antenna.
- Increase the separation between the equipment and receiver.
- Connect the equipment into an outlet on a circuit different from that to which the receiver is connected.
- Consult the dealer or an experienced radio/TV technician for help.

Caution: Any changes or modifications to this device not explicitly approved by manufacturer could void your authority to operate this equipment.

This device complies with part 15 of the FCC Rules. Operation is subject to the following two conditions: (1) This device may not cause harmful interference, and (2) this device must accept any interference received, including interference that may cause undesired operation.

The device has been evaluated to meet general RF exposure requirement.

IC warning statements:

Warning Statement:

RSS-GEN ISSUE 5, 8.4 User manual notice

This device contains licence-exempt transmitter(s)/receiver(s) that comply with Innovation, Science and Economic Development Canada's licence-exempt RSS(s).

Operation is subject to the following two conditions:


- (1) This device may not cause interference.
- (2) This device must accept any interference, including interference that may cause undesired operation of the device.

The digital apparatus complies with Canadian CAN ICES-3 (B)/NMB-3(B).

This equipment complies with IC radiation exposure limits set forth for an uncontrolled environment and meets RSS-102 of the IC radio frequency (RF)

Exposure rules. This equipment has very low levels of RF energy that are deemed to comply without testing of specific absorption ratio (SAR).

Documents / Resources

	<p>cubetape C200 Series Compact Dimensioning Device [pdf] User Guide 2AWQV-C200, 2AWQVC200, C200 Series, Compact Dimensioning Device, C200 Series Compact Dimensioning Device</p>
---	---

References

-  [Support - CubeTape](#)
-  [Warranty - CubeTape](#)