



Cub Cadet Poly Swivel Dump Cart User Manual

[Home](#) » [Cub Cadet](#) » Cub Cadet Poly Swivel Dump Cart User Manual

Contents [[hide](#)]

1 Cub Cadet Poly Swivel Dump Cart User Manual

- 1.1 Safety Rules
- 1.2 Carton Contents
- 1.3 Assembly Instructions
- 1.4 Operating Instructions
- 1.5 Do-It-Yourself Accessories
- 1.6 Repair Parts

2 Documents / Resources

- 2.1 References

3 Related Posts

Cub Cadet Poly Swivel Dump Cart User Manual



CC-4048PS-ATV
15 cu ft POLY SWIVEL DUMP CART

U.S. Patent No. 8,496,298 & 9,242,588



READ AND FOLLOW ALL SAFETY RULES AND OPERATING INSTRUCTIONS BEFORE USING THIS EQUIPMENT

6004372 – REV A 08/19

Safety Rules

This is the safety alert symbol. It is used to alert you to potential personal injury hazards. Obey all safety messages that follow this symbol to avoid possible injury or death.

Read and understand all safety rules and operating instructions before using this tractor/ATV/UTV attachment.

Follow all safety rules and operating instructions provided by your vehicle's manufacturer when using attachment.

Never allow children or untrained persons to operate vehicle or attachment.

Do not exceed the vehicle manufacturer's towed weight limit.

Reduce vehicle speed and allow extra stopping distance when towing heavy loads.

Reduce vehicle speed and towed weight when operating on slopes.

Operate up and down slopes, never across the face of slopes.

Do not carry passengers on vehicle or attachment.

Avoid sudden turns or maneuvers.

Do not tow attachment on public roadways.

Do not remove warning decals from product.

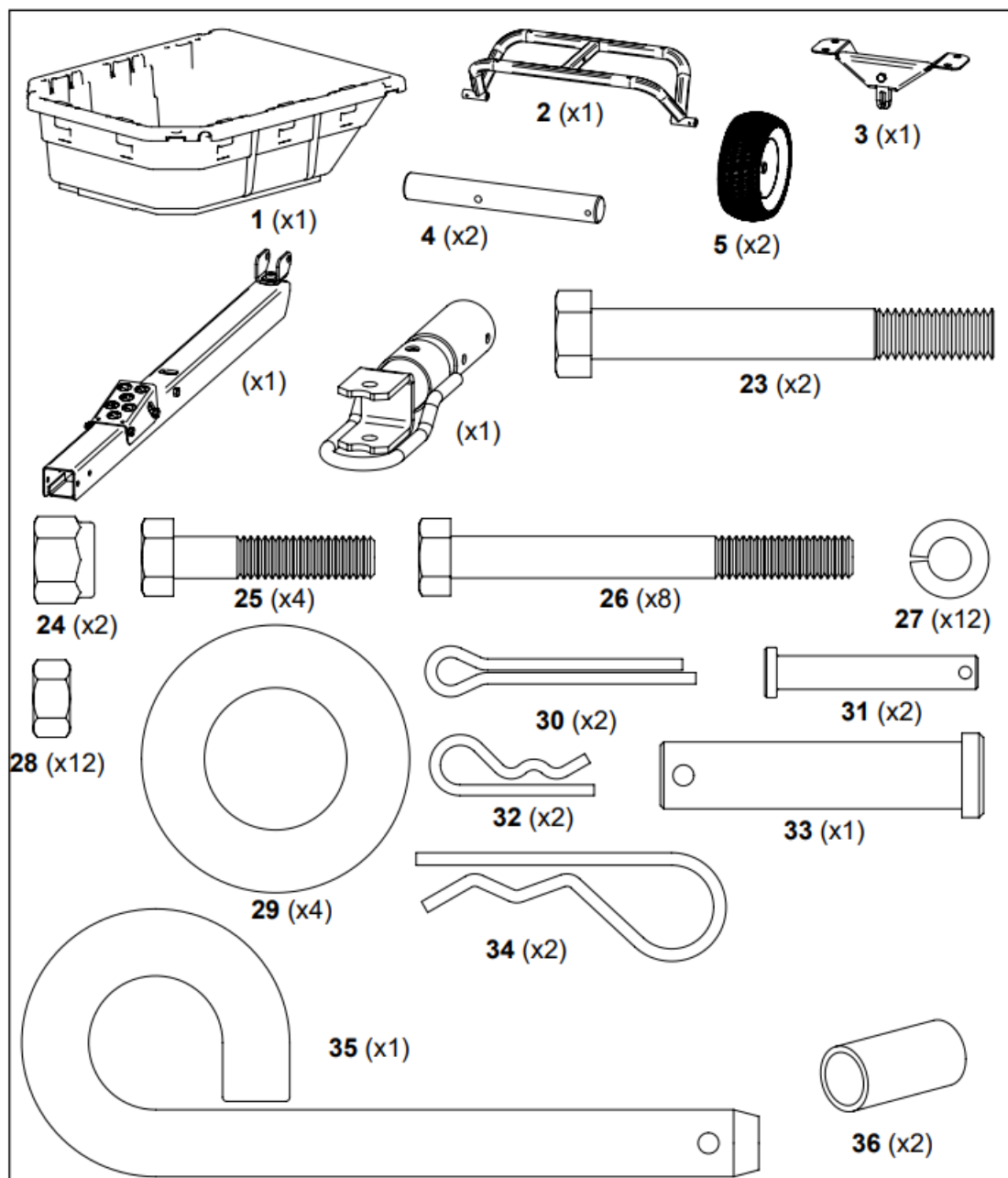
Check product for worn, loose, or damaged parts before each use. If any damage is present, repair the product before using.

Check product for loose or missing fasteners before each use. Tighten or replace fasteners as needed before using.

Do not exceed vehicle speed of 20 miles per hour when towing Dump Cart.

Do not exceed Dump Cart rated weight capacity of 1250 pounds.

Carton Contents

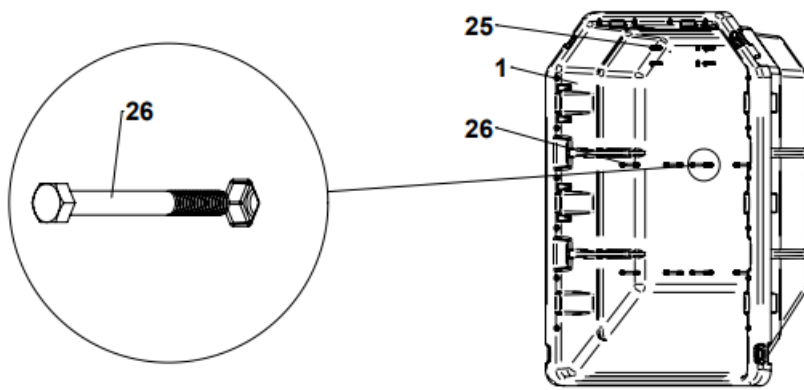


TOOLS REQUIRED FOR ASSEMBLY:

- 1/2" Wrench and Socket
- 9/16" Wrench and Socket
- Needle-Nose Pliers
- Grease Gun

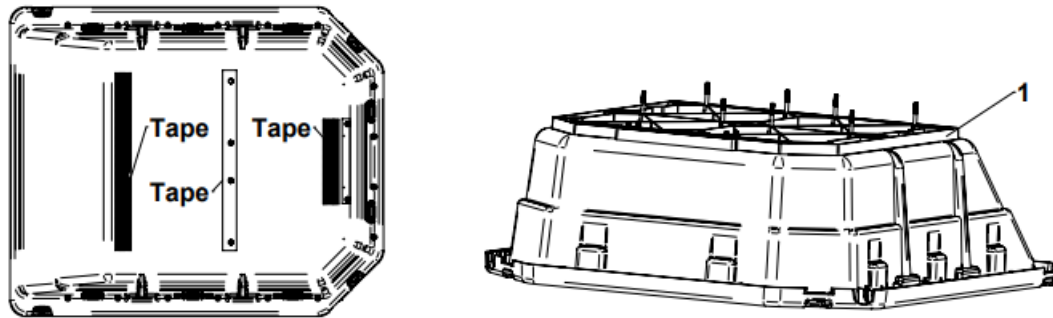
Assembly Instructions

1. Hold Poly Body (1) on side as shown. Insert Hex Bolts (25 & 26) as shown.

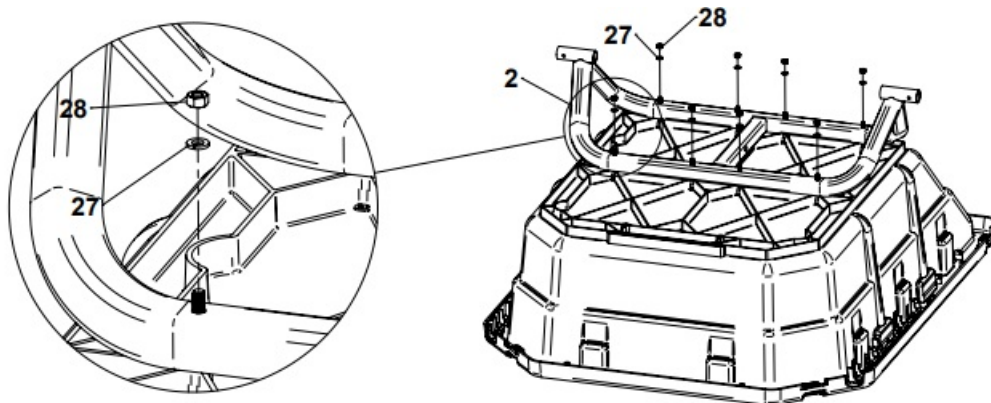


2. Flip Poly Body (1) to expose bolts.

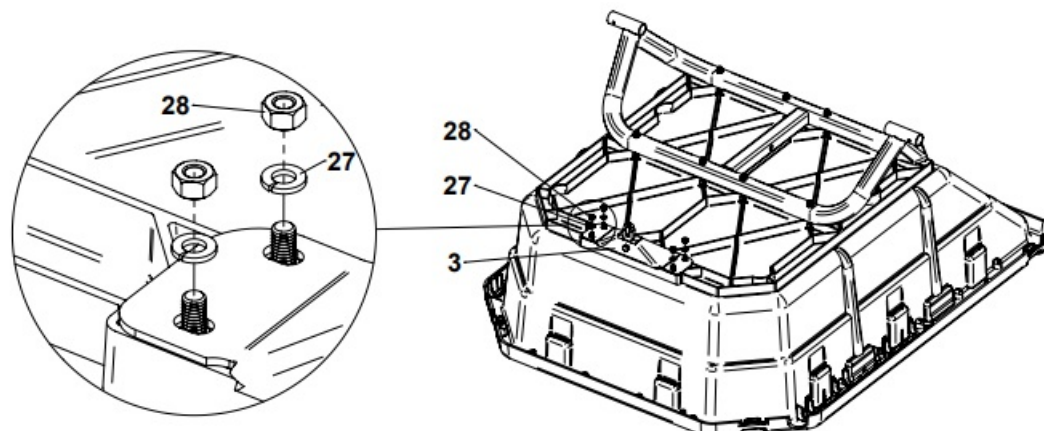
TIP: Bolt heads can be secured with tape to aid in assembly.



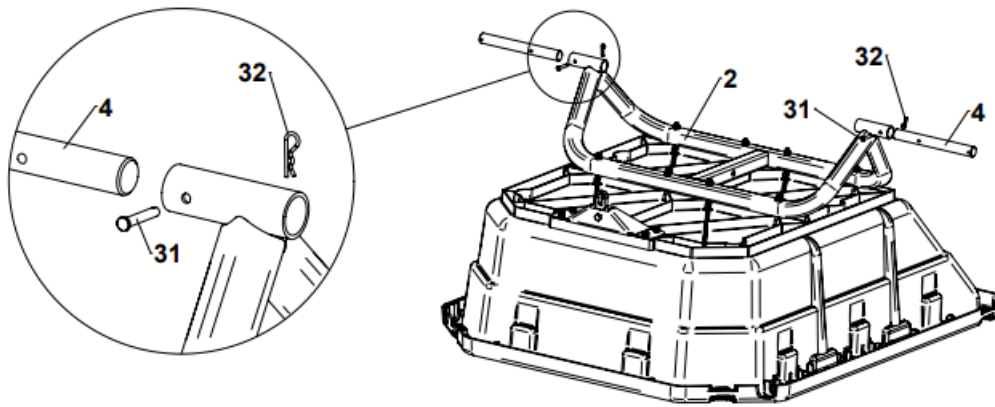
3. Install Undercarriage (2) over top of Hex Bolts. Install Lockwasher (27) and tighten Hex Nuts (28) onto Hex Bolts.



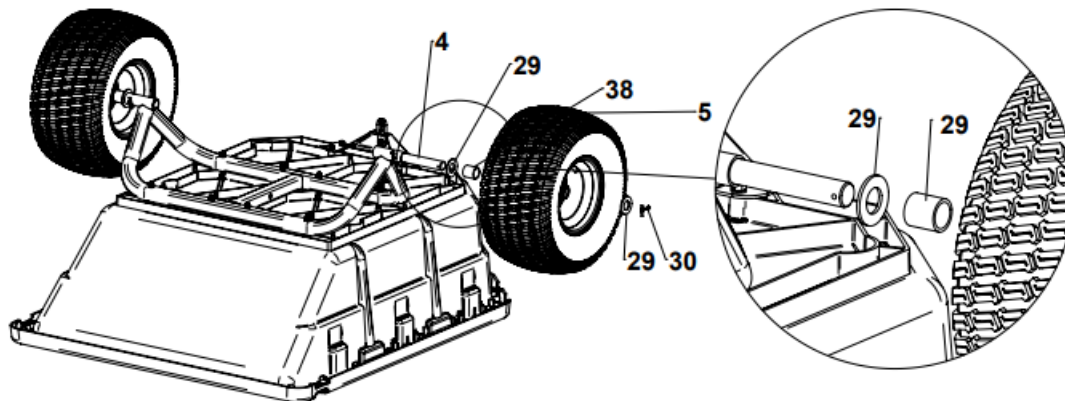
4. Attach Front Support (3) to Poly Body (1). Install Lockwasher (27) and tighten Hex Nuts (28) onto Hex Bolts.



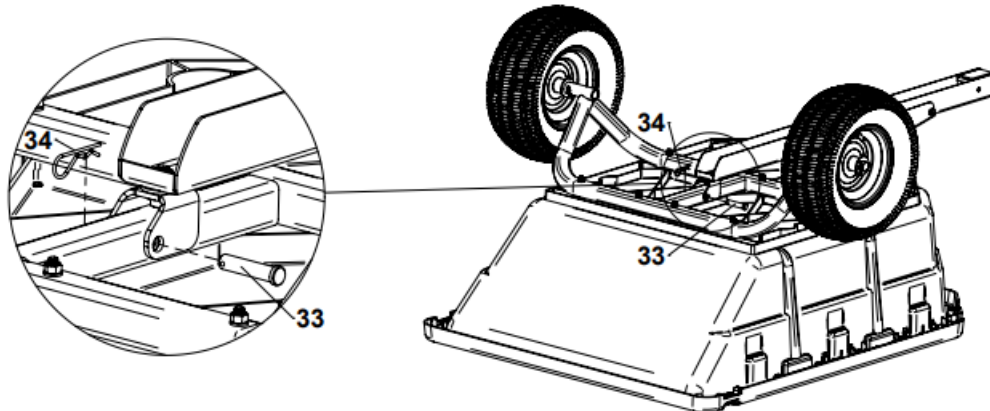
5. Insert Stub Axles (4) into Undercarriage (2) and secure with Clevis Pins (31) and Hairpin Cotters (32)



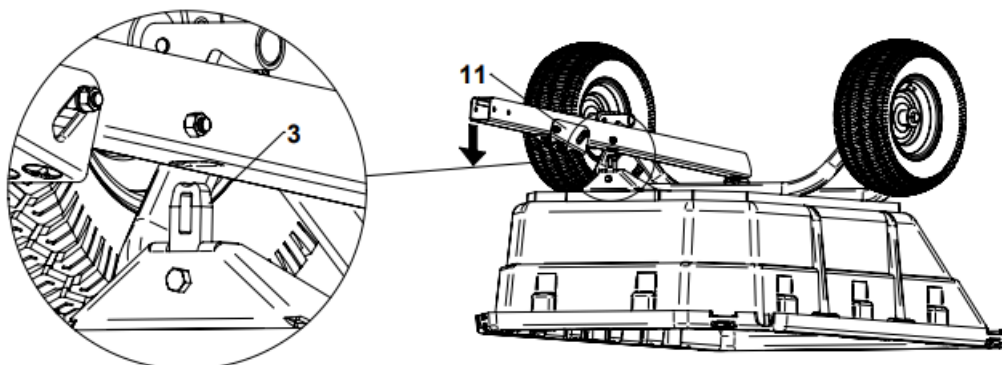
6. Slide Washers (29), Spacers (38), and Wheels (5) onto Stub Axles (4). Install Cotter Pins(30). Bend legs of Cotter Pins to secure.



7. Align holes in Swivel Clevis and Undercarriage and install Clevis Pin (33) as shown. Secure Pin with Hairpin (34).

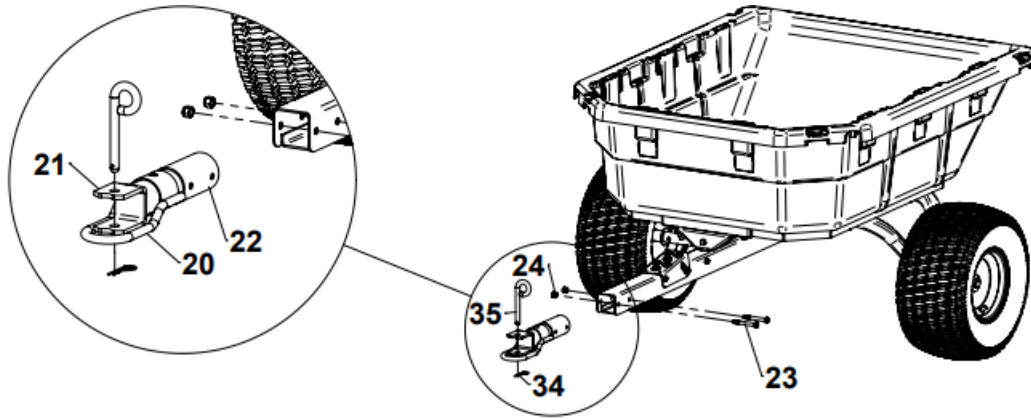


8. Depress Foot Pedal (11), insert Front Support (3) into Drawbar Assembly. When Drawbar is locked in place, flip cart upright onto wheels.



9. Insert preassembled hybrid hitch assembly into Drawbar. Insert Hex Bolts (23) and tighten Nylock Nuts (24). Install Hitch Pin (35) and Hairpin Cotter (34).

DO NOT OVERTIGHTEN, HITCH MUST SPIN FREELY.



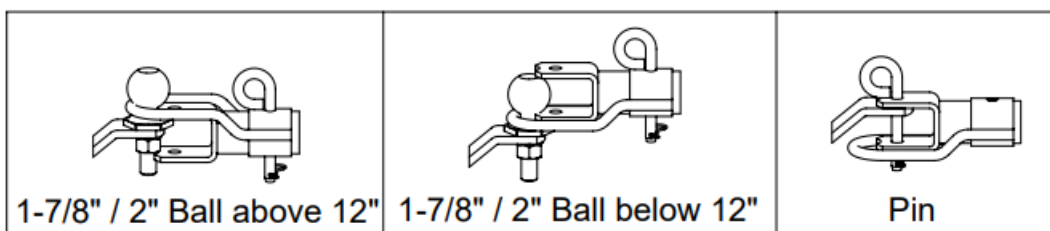
Operating Instructions

Before Using Dump Cart:

1. Apply lithium grease to wheels using grease gun until grease can be seen squeezing out from both sides of the wheel.
2. Check tire pressure and inflate to 24 psi if needed.
3. Read all Safety Rules found on page 1.

How to Use Dump Cart:

1. Attach Dump Cart to your tractor, ATV, or UTV as shown below.
2. Do not exceed 1250 pounds when loading material into the cart body.
3. Distribute the weight of the load as evenly as possible in the cart body for best handling.
4. When hauling heavy loads, verify that your vehicle has adequate towing and braking capacity.
5. Do not exceed 20 miles per hour when towing Dump Cart.



How to Empty Dump Cart:

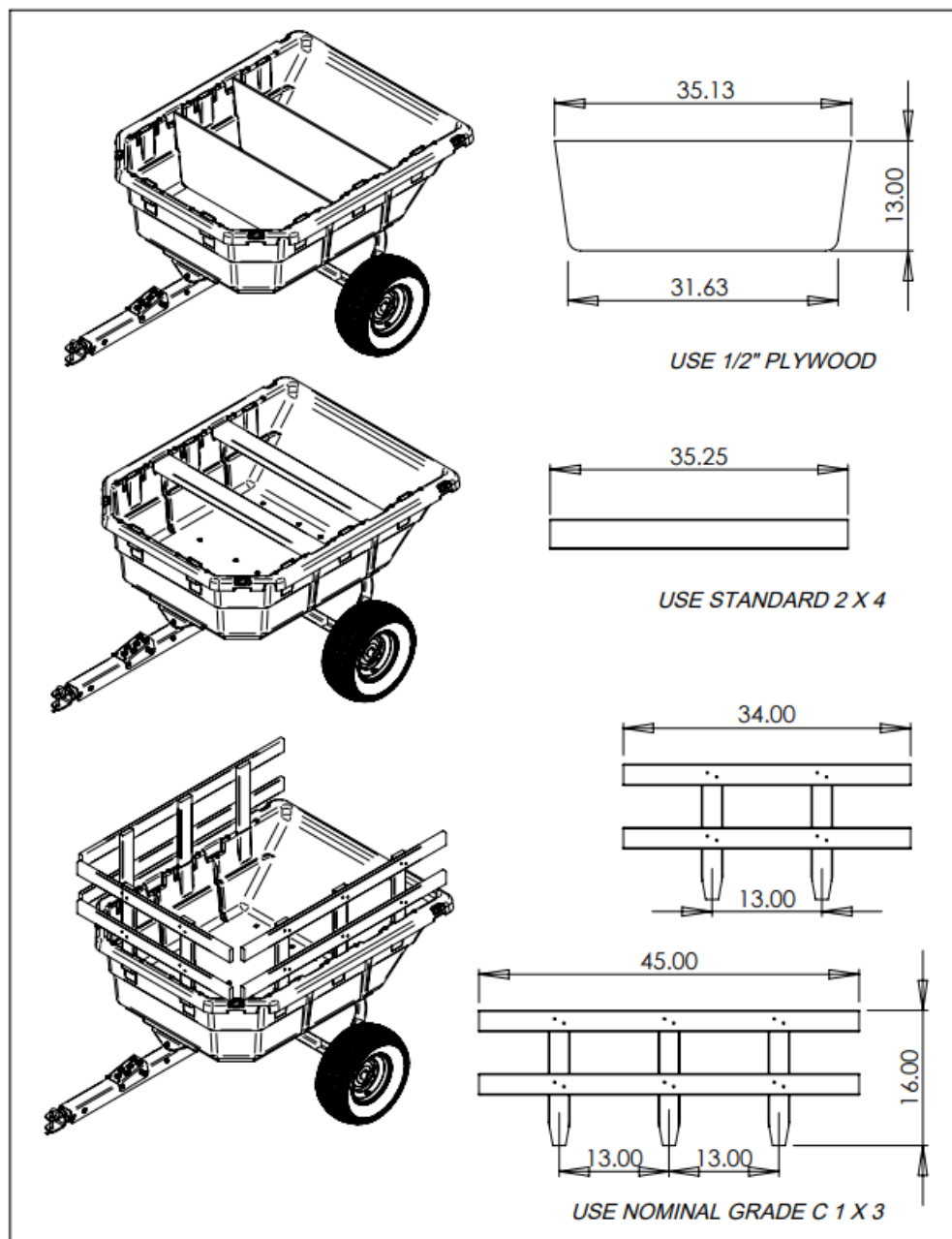
1. Step down the foot pedal to release the latch mechanism.
2. Lift the body and swivel as desired to guide the material to preferred location.
3. Lift the body entirely and empty material.
4. Lower the body and guide the latch into the drawbar and relatch.

Periodic Maintenance:

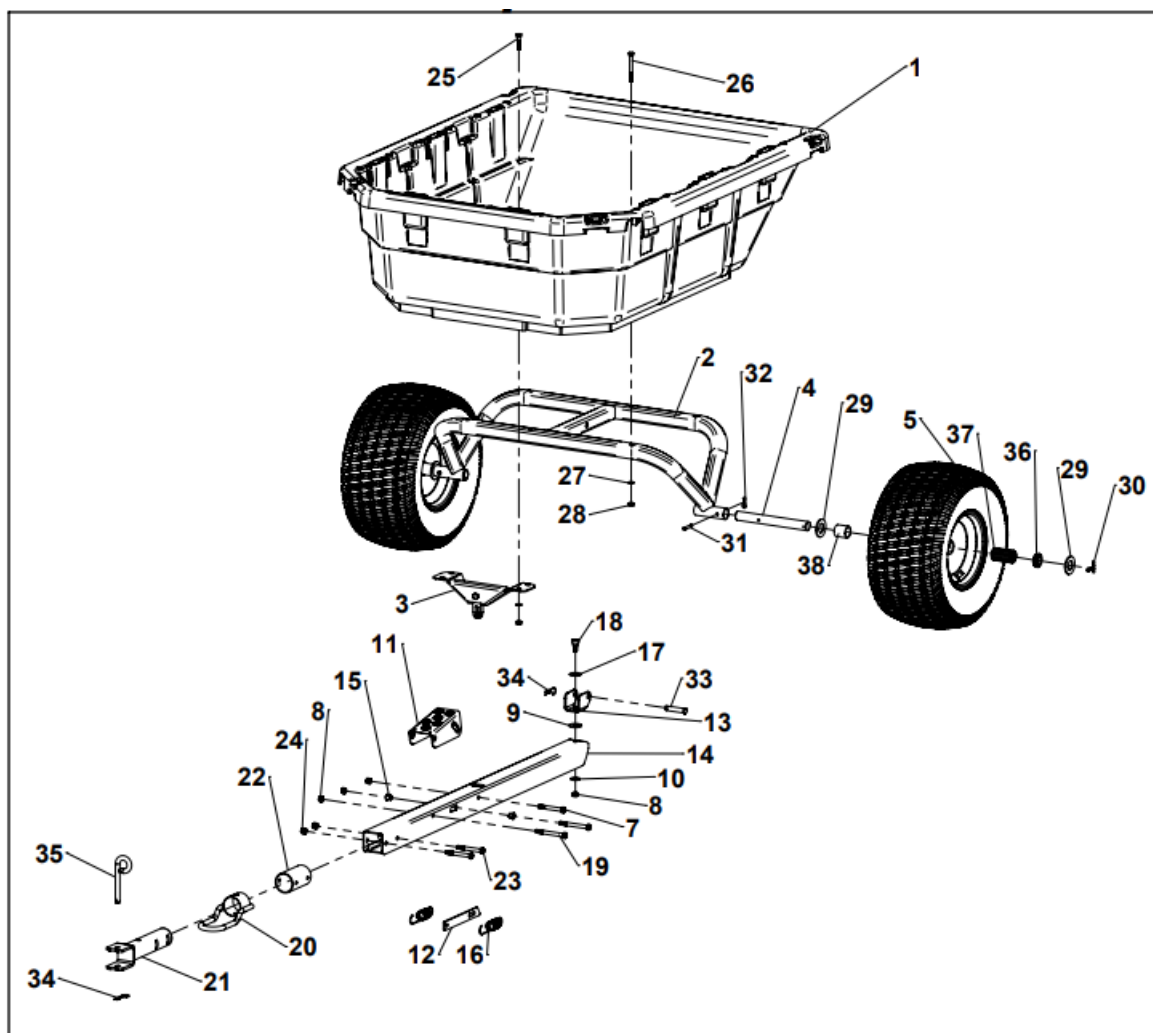
- Tighten fasteners as needed before each use

- Check tire pressure before each use
- Grease wheels annually

Do-It-Yourself Accessories



Repair Parts



ITEM	PART NO	DESCRIPTION	QTY	ITEM	PART NO	DESCRIPTION	QTY
1	311161	POLY BODY	1	21	6000534-B2	HYBRID HITCH	1
2	6000320-B2	UNDERCARRIAGE	1	22	6000379-B2	HITCH BUSHING	1
3	6000311-B2	FRONT SUPPORT ASSEMBLY	1	23		3/8"-16 X 3" HEX BOLT	2
4	6000523	STUB AXLE	2	24		NYLOCK NUT, 3/8"-16	2
5	6000727-C	WHEEL (BEARING/BUSHINGS INC.)	2	25		5/16"-18 X 1-1/2" HEX BOLT	4
7		3/8"-16 X 3" HEX BOLT	1	26		5/16"-18 X 3" HEX BOLT	8
8		NYLOCK NUT, 3/8"-16	4	27		5/16" SPLIT LOCKWASHER	12
9		WASHER, 1/2" FLAT	1	28		HEX NUT, 5/16"-18	12
10		WASHER, 3/8" FLAT	1	29		WASHER, 1" SAE	4
11		FOOT PEDAL	1	30		COTTER PIN, 3/16" X 1-1/2"	2
12		LATCH	1	31		CLEVIS PIN, 1/4" X 1-1/2"	2
13	KIT 6000323-BY	CLEVIS, SWIVEL	1	32	KIT 6000462	HAIRPIN COTTER, 1-3/16"	2
14		DRAWBAR, WELDED	1	33		CLEVIS PIN, 1/2" X 2"	1
15		3/8" FLANGED BUSHING	2	34		HAIRPIN COTTER, 2-5/16"	2
16		SPRING, LATCH	2	35		HITCH PIN	1
17		SPRING WASHER, 1/2"	1	36	KIT	1" RETAINER BUSHING	4
18		SHOULDER BOLT, 1/2"	1	37	6000818	1" ROLLER BEARING	2
19		3/8"-16 X 3-1/2" HEX BOLT	2	38	300121	SPACER, 1" ID X 1.375" LONG	2
20	6000536-B2	KEEPER WELDMENT	1				



Designed And Tested In Columbus, Ohio
Manufactured In The U.S.A. From Domestic
And Imported Components



MODEL # CC-4048PS-ATV

(800) 652-2321

Documents / Resources

  CC-4048PS-ATV 15 cu ft POLY SWIVEL DUMP CART <small>READ AND FOLLOW ALL SAFETY INSTRUCTIONS CAREFULLY BEFORE USING THIS EQUIPMENT</small>	<p>Cub Cadet Poly Swivel Dump Cart [pdf] User Manual CC-4048PS-ATV, 15 cu ft Dump Cart, Poly Swivel Dump Cart, 8496298, 9242588</p>
---	---

References

-  [Parts Store - Ohio Steel IndustriesOhio Steel Industries](#)