



## ctronics PTZ Wireless Camera Instruction Manual

[Home](#) » [ctronics](#) » ctronics PTZ Wireless Camera Instruction Manual 



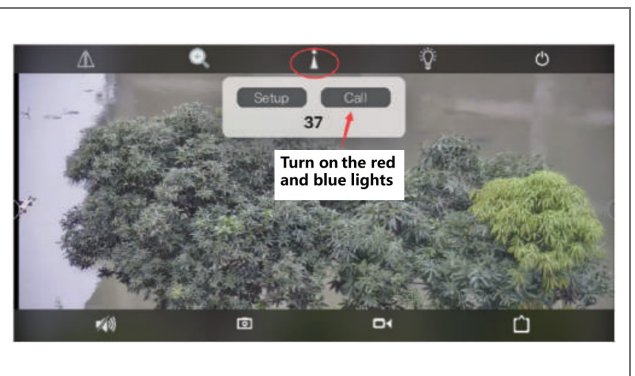
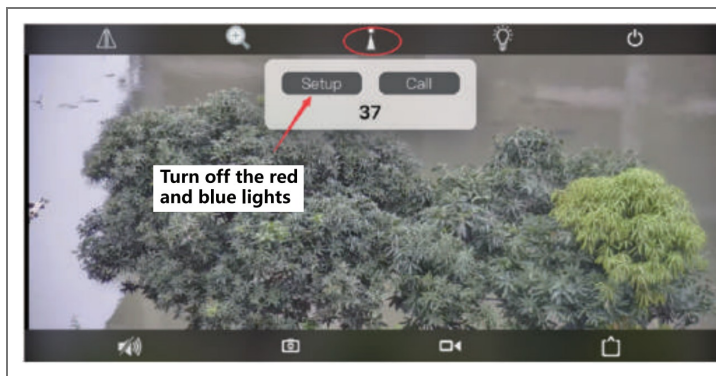
### Contents

- [1 Red and blue light alarm](#)
- [2 Set up guard position human tracking](#)
- [3 Set presets and cruise](#)
- [4 Documents / Resources](#)
  - [4.1 References](#)
- [5 Related Posts](#)

### Red and blue light alarm

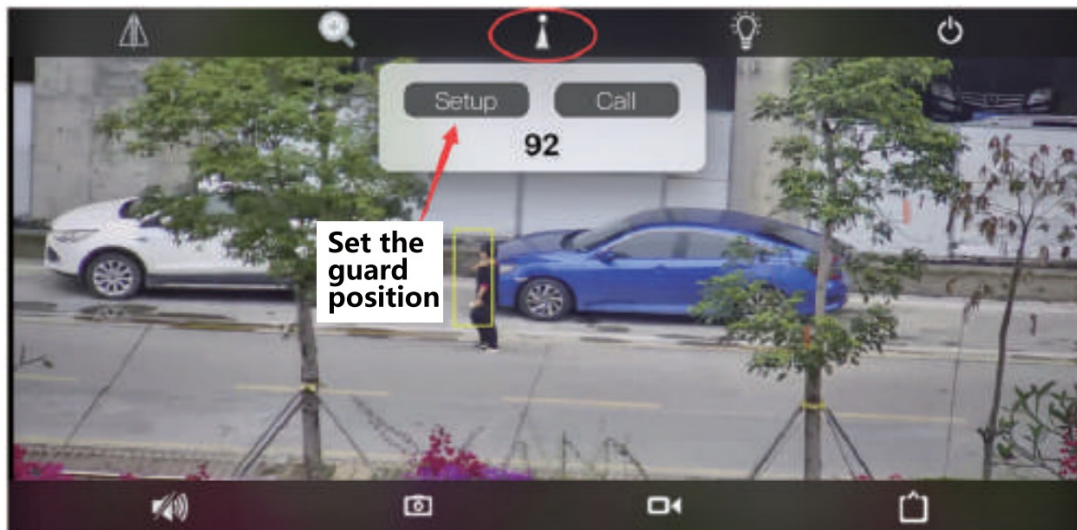
When the camera detects a person, the red and blue lights are on and flashing alternately to serve as a warning. This function is turned on by default.

If you need to turn off, please enter 37 in the mobile phone APP as shown below and click Setup. To reopen, enter 37 and click Call



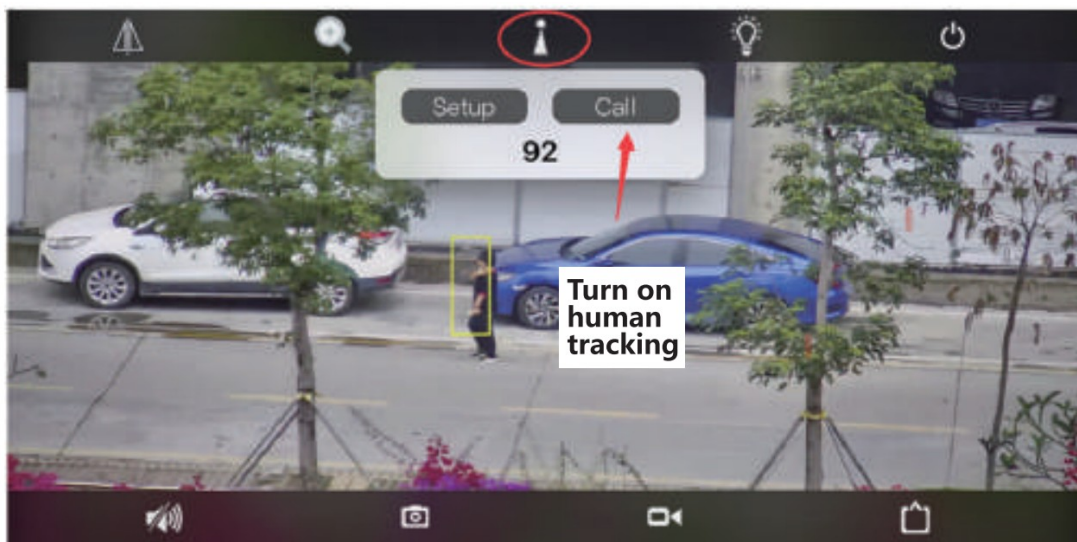
## Set up guard position human tracking

First select a position to be monitored, defined as a guard position. After tracking is completed, the camera will automatically return to here, enter 92, and click Setup

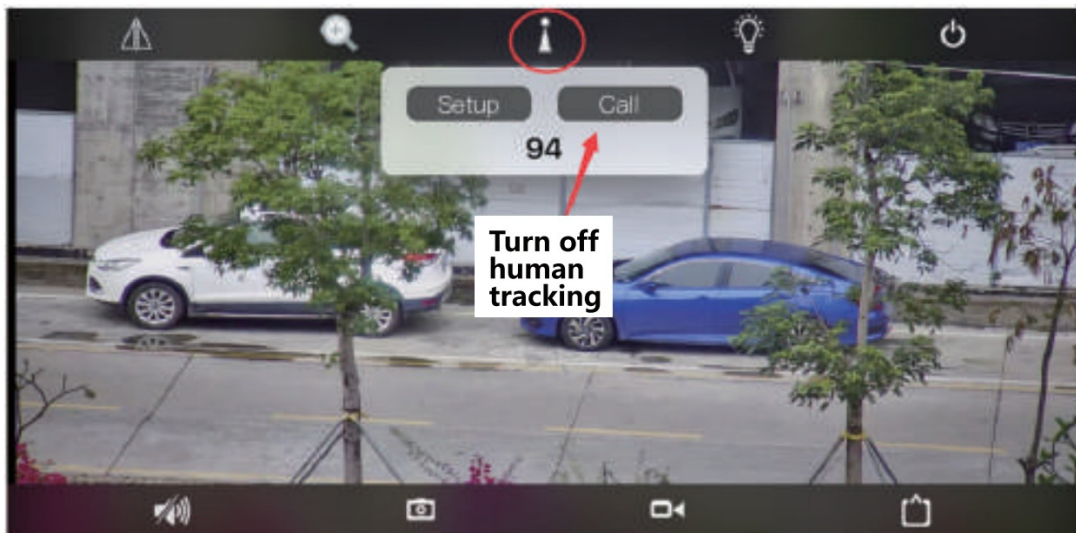


Enter 92 and click call to turn on the humanoid tracking.

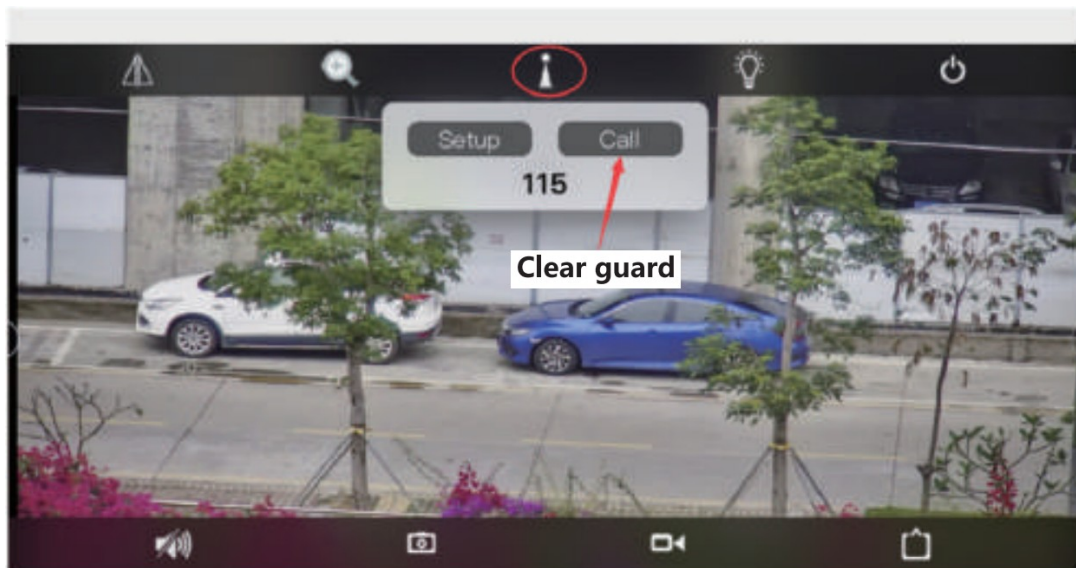
At this time, the camera finds that someone is passing by in the monitoring screen. It will automatically track the movement of the person until the person leaves the entire monitoring range of the camera.



2: If you need to turn off human tracking, enter 94 and click call.



If you need to clear the guard position and set a new guard position, you need to reset the gimbal to factory settings, enter 115, and click call

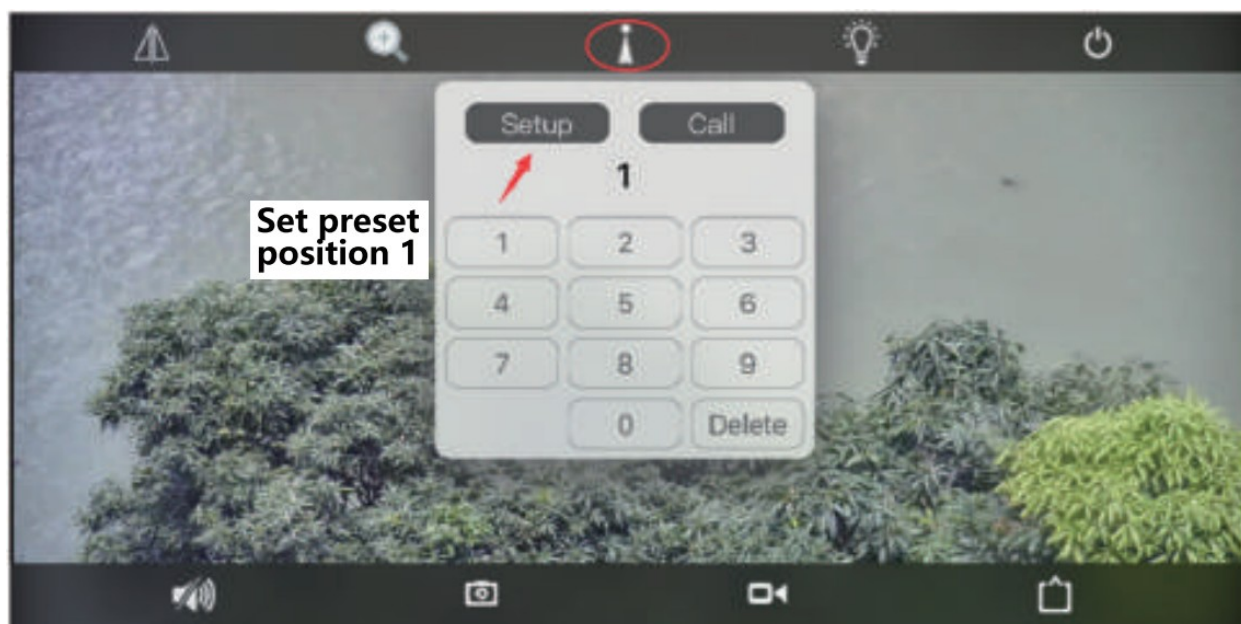


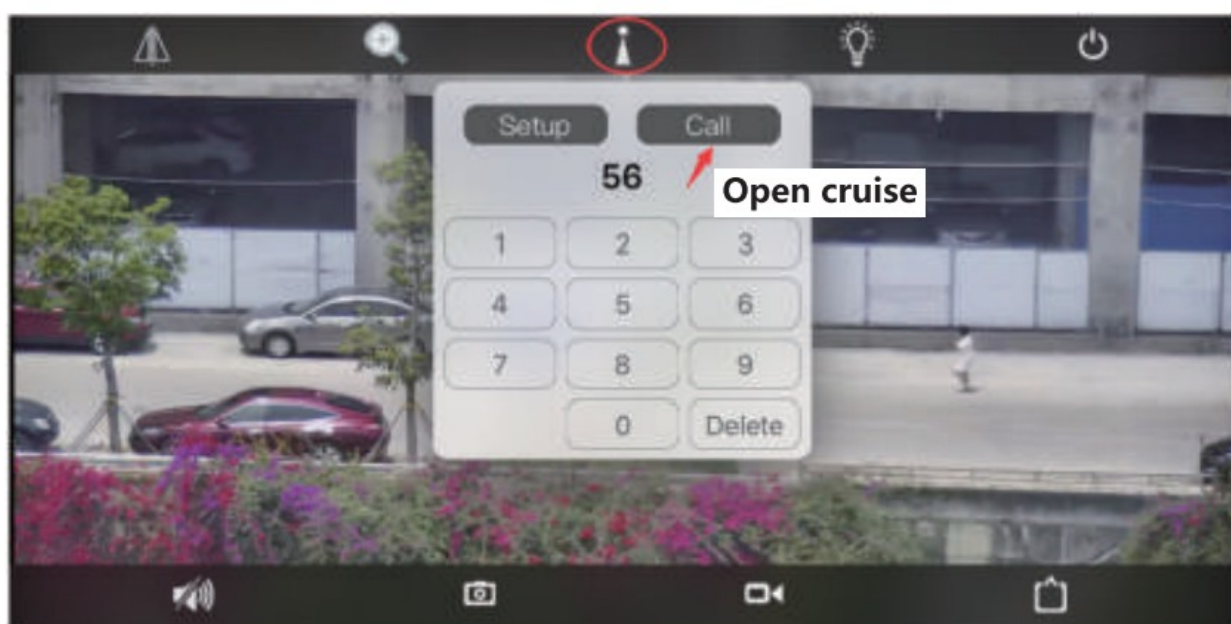
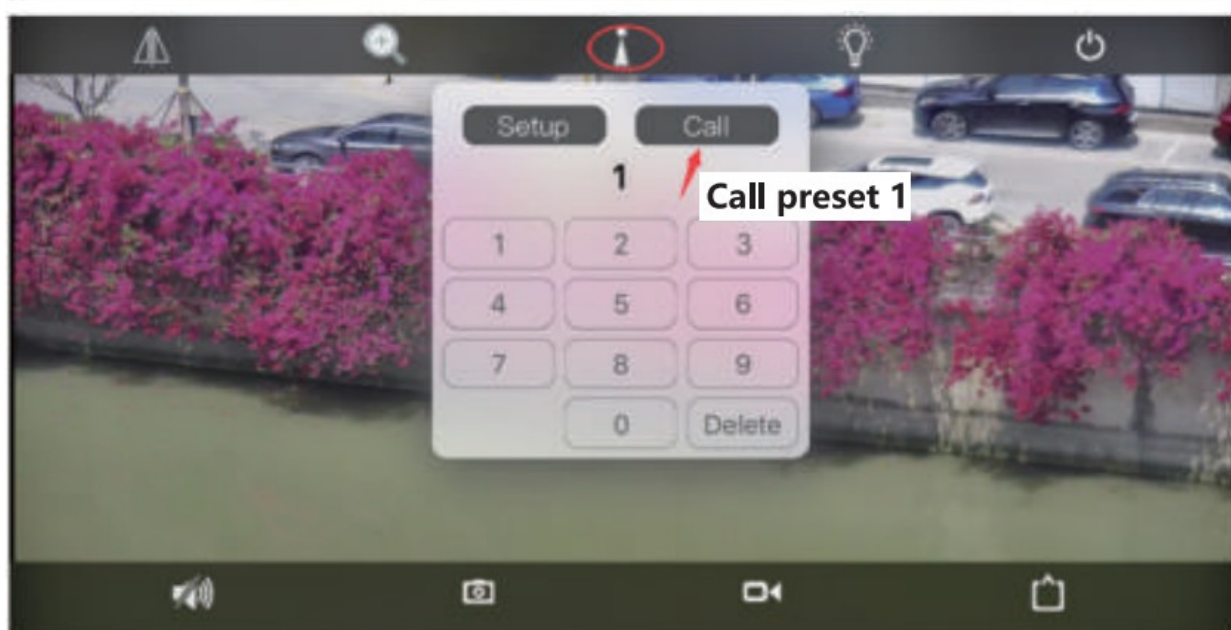
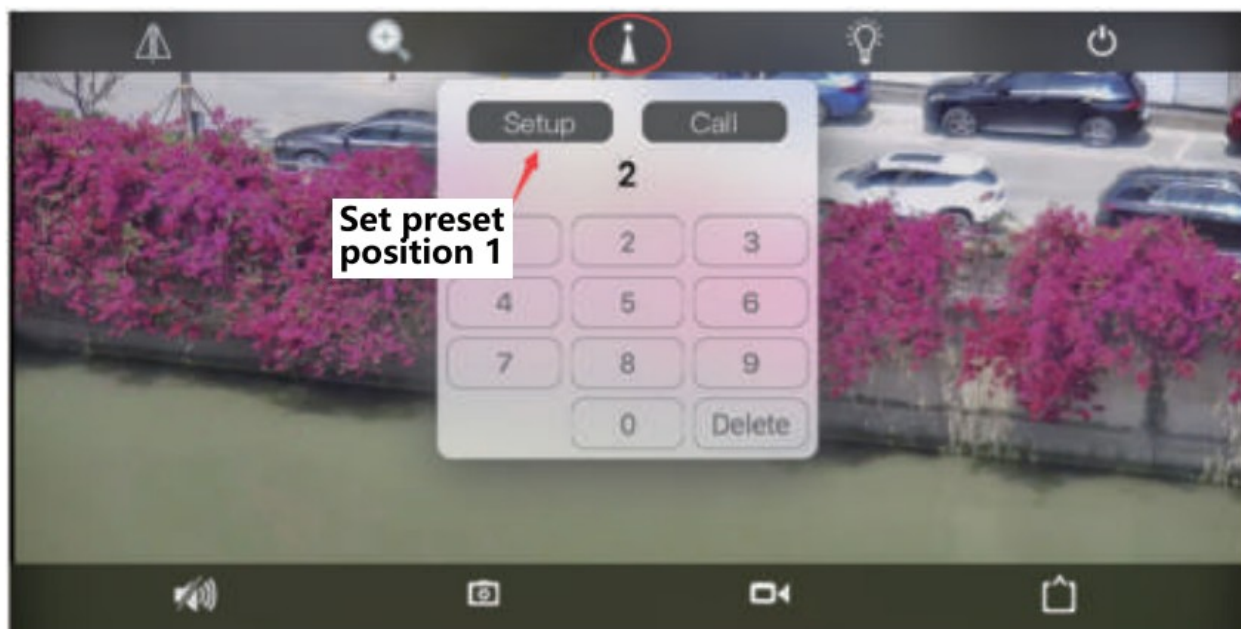
**Note:** The human tracking function is based on the track of the person's activity captured on the camera screen. If there are more people on the monitoring screen, the camera tracking function may lose track of the object due to more targets and mistracking due to different activity tracks. normal phenomenon. After the camera is zoomed in to a larger magnification, the slight camera movement will cause a larger displacement of the screen. Therefore, the camera should not use this function after zooming in with ZOOM +

## Set presets and cruise

Set one or several points to be monitored as presets 1, 2, .... (up to 30). When you want to see a certain point, directly call one of the preset positions, the camera will automatically turn to the preset position. When the cruise command is called, the camera will turn in turn according to the preset positions 1,2, .. and slide the APP screen to stop cruise.









Deutsche


[www.ctronics-tech.com](http://www.ctronics-tech.com)

Email: [support@ctronics-tech.com](mailto:support@ctronics-tech.com)

Facebook: [www.facebook.com/ctronicstech/](https://www.facebook.com/ctronicstech/)

Instagram: [www.instagram.com/ctronics\\_tech/](https://www.instagram.com/ctronics_tech/)

## Documents / Resources

 <small>Operator Manual of PTZ Wireless Camera 中文說明書、無線云台攝像機之操作手冊</small>	<a href="#">ctronics PTZ Wireless Camera</a> [pdf] Instruction Manual PTZ Wireless Camera, PTZ Camera, Wireless Camera, Camera
---	---

## References

- [Ctronics | Wireless HD Security Camera | Smart Home Cameras](#)
- [Ctronics \(@ctronics\\_tech\) • Instagram photos and videos](#)
- [Home page](#)