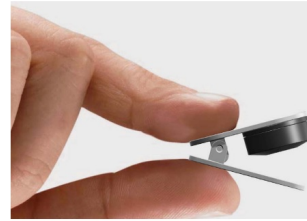




**Button
Control**



ctrl4U Button Control User Guide

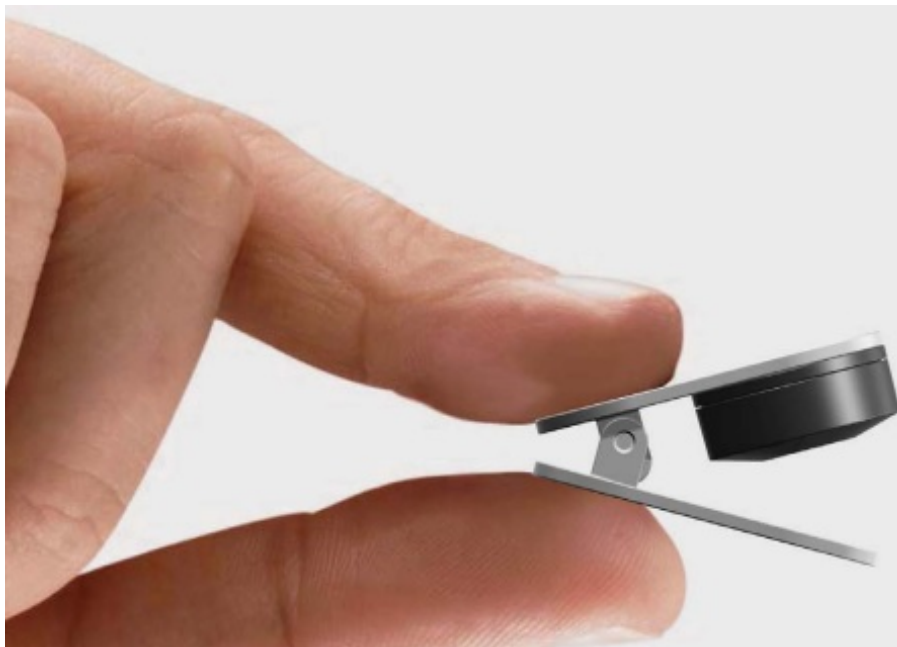
[Home](#) » [ctrl4U](#) » ctrl4U Button Control User Guide 

Contents

- 1 ctrl4U Button Control
- 2 Product Specifications
- 3 Frequently Asked Questions
- 4 INNOVATIVE ID DESIGN
- 5 BLUETOOTH STANDBY AND WAKE-UP FUNCTION
- 6 ANSWER CALL / END CALL REJECT CALL / VOICE ASSISTANT
- 7 PLAY, PAUSE, VOLUME CONTROL
- 8 MOBILE EMERGENCY CALL FUNCTION
- 9 PLAY SOUND TO LOCATE PHONE
- 10 CAMERA CONTROL
- 11 MAGNETIC SUCTION CHARGING
- 12 Common Operations_Initial Pairing
- 13 Common Operations_Clear Pairing
- 14 Common Operations_Re-pairing
- 15 Button Control APP
- 16 Operation instructions when Bluetooth is activated
- 17 Indicator Description
- 18 Warning Statement
- 19 Documents / Resources
 - 19.1 References
- 20 Related Posts



ctrl4U Button Control



Product Specifications

- Button Control
- Innovative ID Design
- Bluetooth Standby and Wake-up Function
- Answer Call / End Call Reject Call / Voice Assistant
- Play, Pause, Volume Control
- Mobile Emergency Call Function
- Play Sound to Locate Phone
- Camera Control
- Magnetic Suction Charging

Frequently Asked Questions

Question: How do I activate the voice assistant feature?

Answer: Press and hold the designated button for voice assistant activation.

Question: Can I adjust the volume during a call?

Answer: Yes, use the volume control buttons to adjust the call volume as needed.

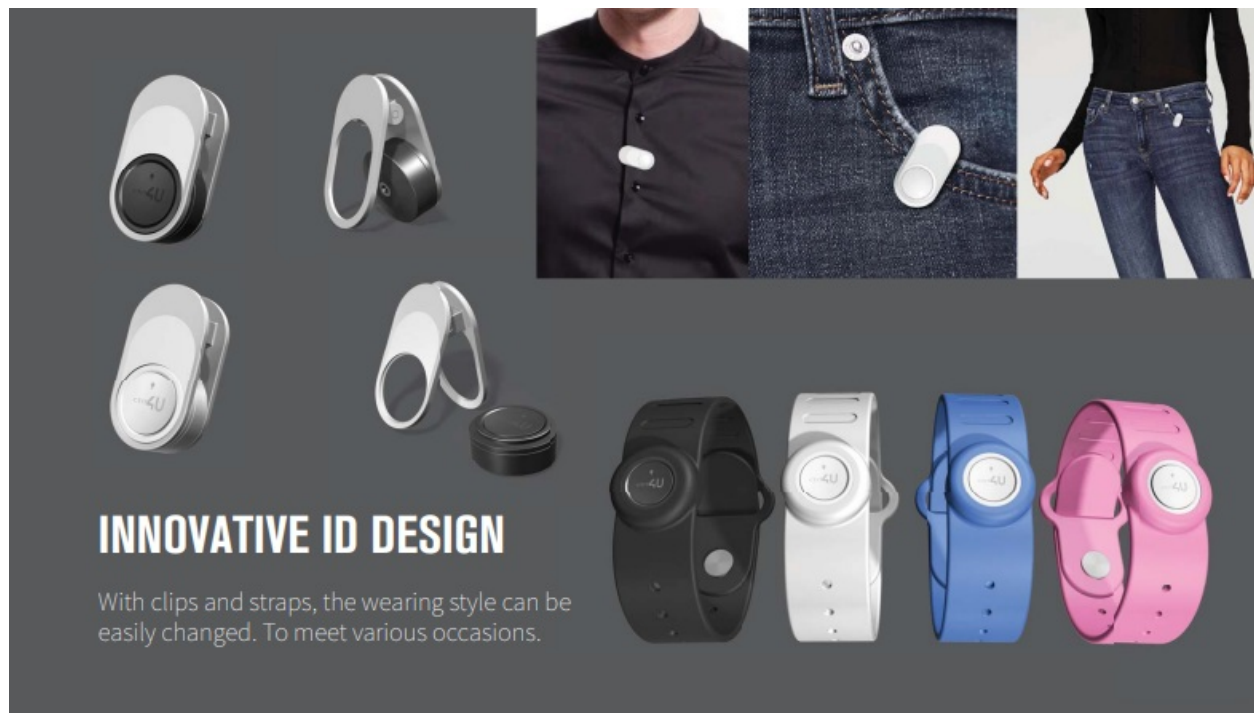
Question: How do I locate my phone using the device?

Answer: Trigger the sound play feature by following the instructions in the manual to help locate your phone.

A smart remote button that can be used for self-defense Essential mobile companion for running, hiking, mountain climbing, fitness, and cycling After being paired with the phone via Bluetooth, it can answer calls, send distress signals, initiate alarms, start recording, find the phone, control music playback, take photos, and more

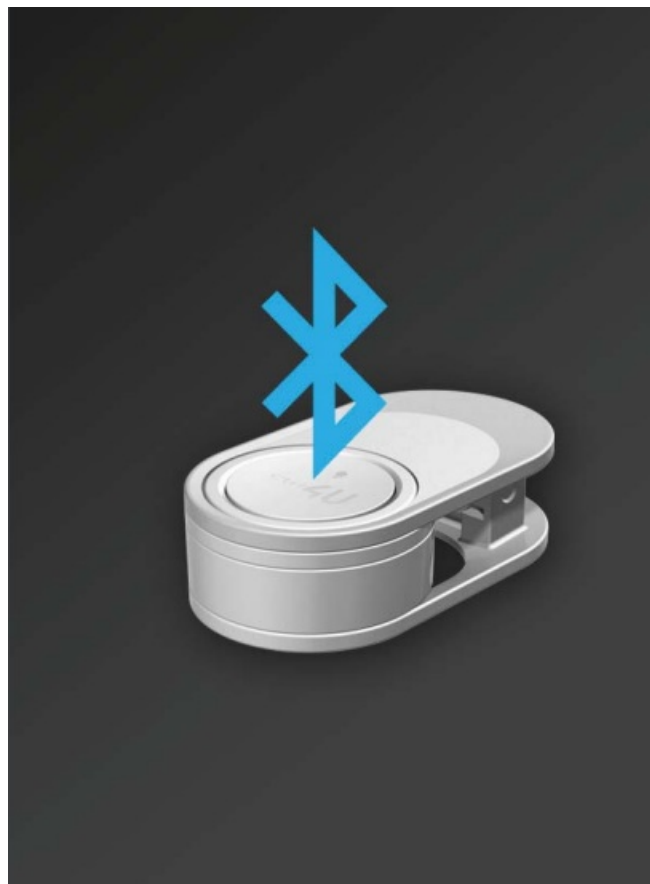
INNOVATIVE ID DESIGN

With clips and straps, the wearing style can be easily changed. To meet various occasions.



BLUETOOTH STANDBY AND WAKE-UP FUNCTION

If there is no key operation for more than 30 seconds, the Button Treasure will automatically enter standby mode. Press once to wake up, the green light flashes once, and after successfully connecting with the phone, the green light flashes again.

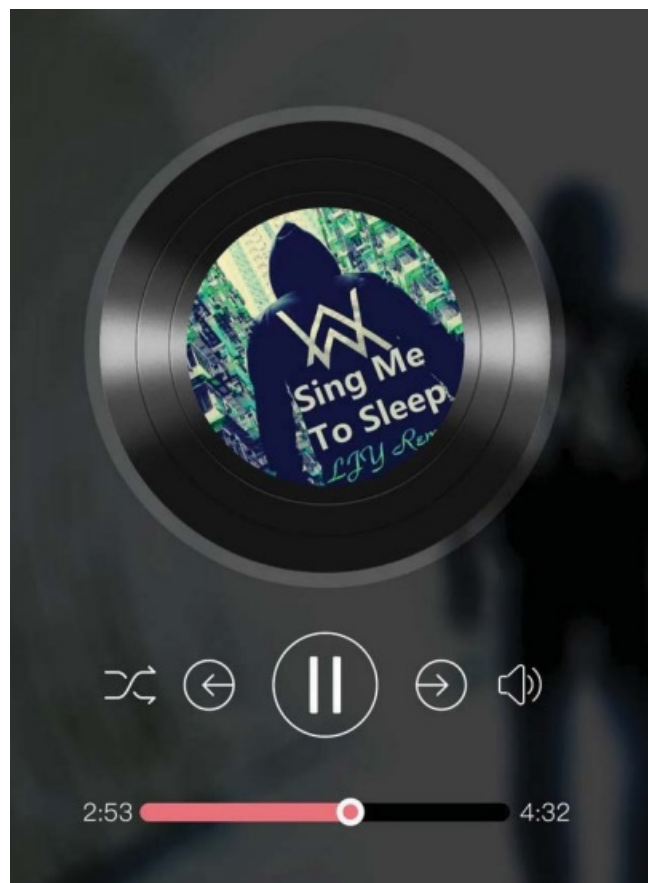


ANSWER CALL / END CALL REJECT CALL / VOICE ASSISTANT



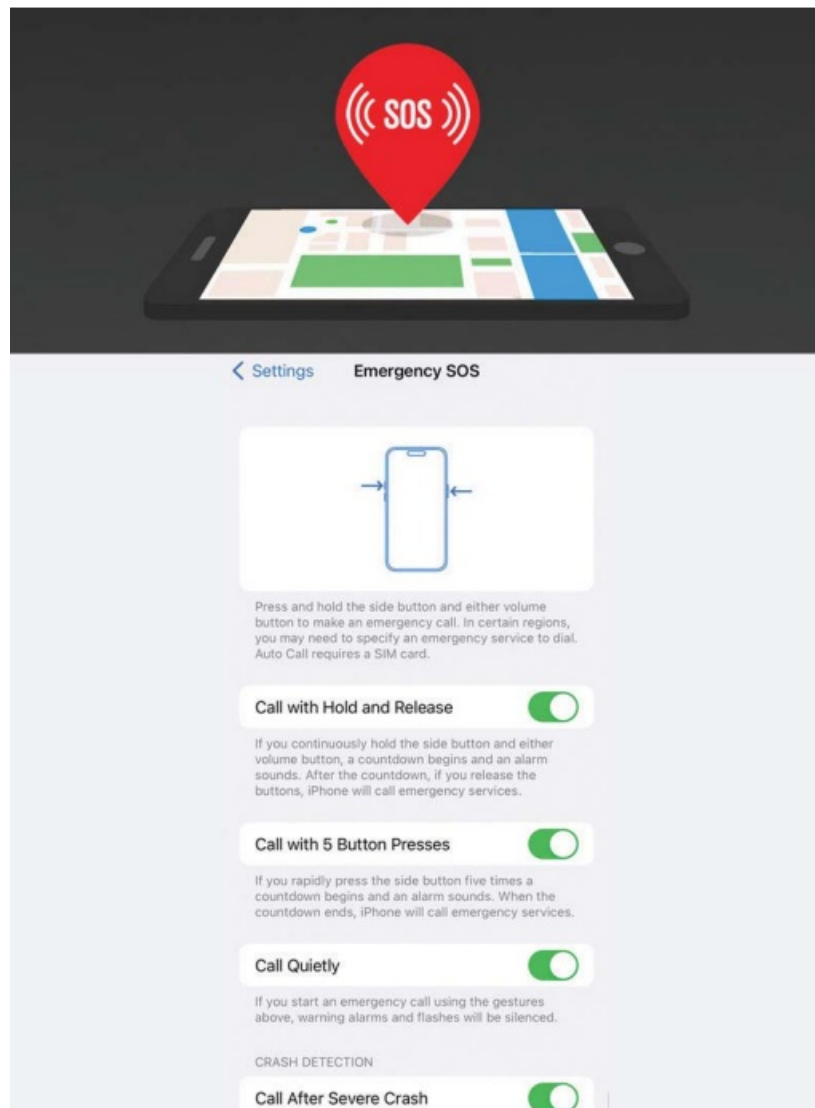
PLAY, PAUSE, VOLUME CONTROL

Supports mainstream players



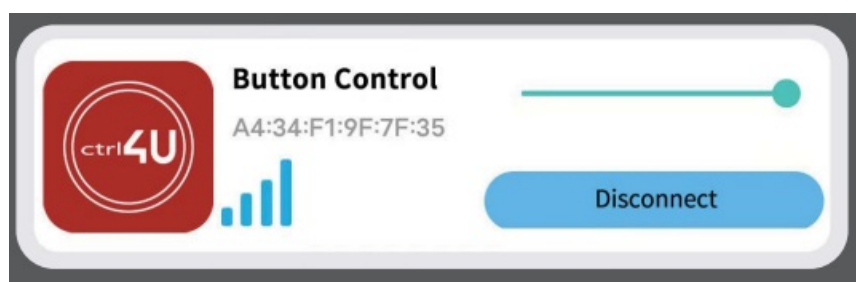
MOBILE EMERGENCY CALL FUNCTION

- (Requires enabling corresponding settings on the phone in advance)
- Sending distress SMS
- Making emergency calls
- Sending location to emergency contacts
- Activating the voice recording black box



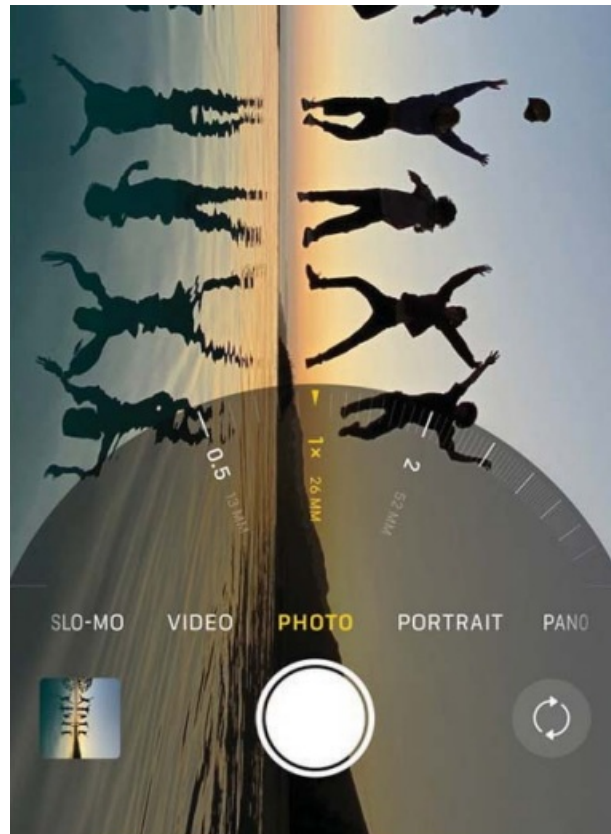
PLAY SOUND TO LOCATE PHONE

To enable the sound location feature, this device needs to be paired with the phone via Bluetooth and have the 'Button Control' app installed on the phone. Within a Bluetooth effective connection range of 10 meters, you can control the phone to play sounds and locate the phone.



CAMERA CONTROL

When the mobile phone camera is set to volume + photo mode, it allows for selfie, single shot, or burst shot control.




MAGNETIC SUCTION CHARGING

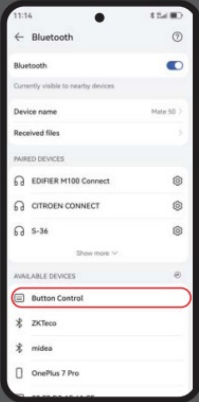
Rechargeable battery capacity of 15mAh, charging voltage of 5V.
Battery level information can be displayed on the phone




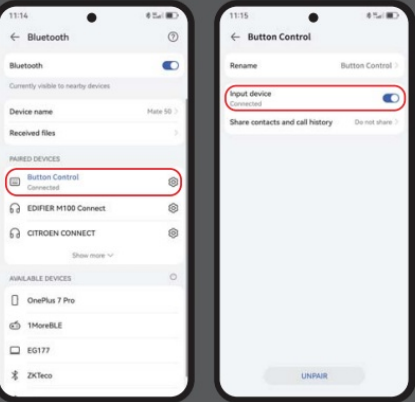
Common Operations_Initial Pairing

Common Operations_Initial Pairing

- 

Enter the Bluetooth setting interface, turn on the Bluetooth switch, press the button once, the green light flashes once, the phone will automatically search for available Bluetooth devices, or click Search Device to search for available devices until "ButtonTreasure" appears in the list of available devices.
- 


Select "Button Control" in the list of devices available on your phone to start pairing.
- 


In the pop-up Bluetooth pairing prompt, touch Pair to complete the pairing.
- 

In the paired device, click "Button Control", and in the pop-up dialog box, make sure that the input device switch of "Button Control" is turned on.

Common Operations_Clear Pairing

Common Operations_Clear Pairing

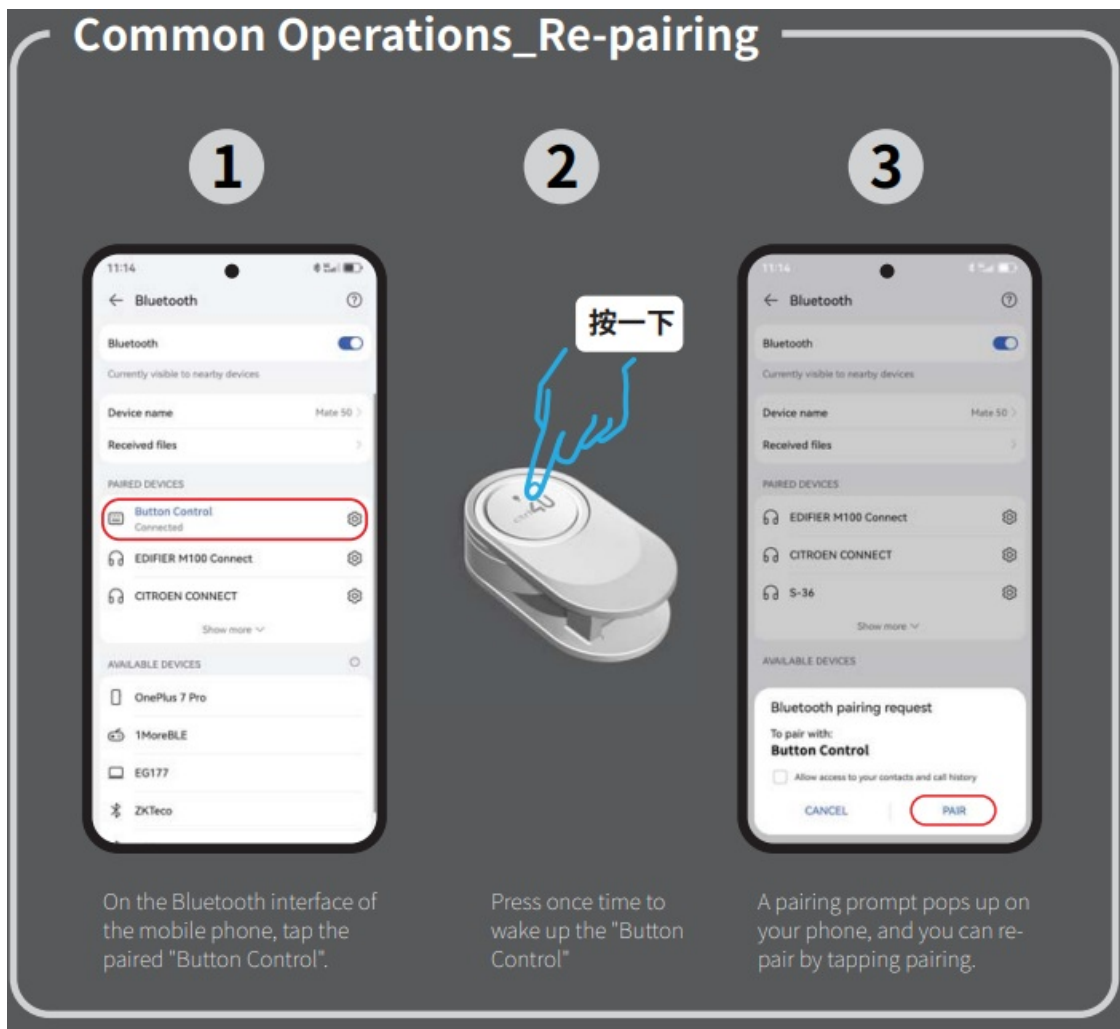
- 

Press once time first to wake up the "Button Control".
- 

Press and hold for 10 seconds
The green light flashes once at 5 seconds and once at 10 seconds

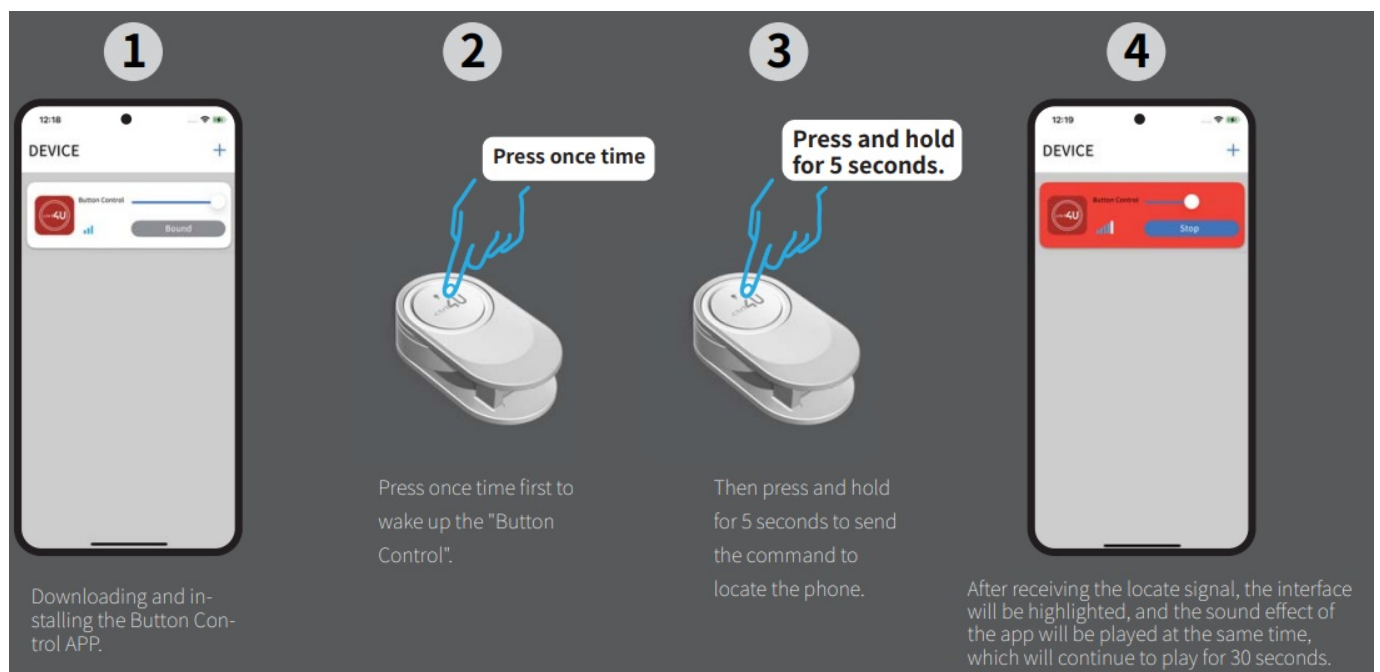
Then press and hold for 10 seconds, and see the green light flash once at 5 seconds and 10 seconds, indicating that the pairing is cleared successfully.

Common Operations_Re-pairing



Button Control APP

After downloading and installing the Button Control APP, follow the prompts to allow the APP permission, and you can use the PLAY SOUND TO LOCATE PHONE function.



Operation instructions when Bluetooth is activated

1. **Play/Pause**
Short press 1 time
2. **Next track**
Quickly press 2 times in a row
3. **Increase volume**
Press and hold for 0.5~3 seconds
4. **Decrease volume**
Quickly press 3 times
5. **Answer incoming call**
Short press 1 time
6. **End call/Reject call/Voice assistant**
Quickly press 4 times in a row
7. **Mobile emergency call function**
– Quickly press more than 5 times
(Requires enabling corresponding settings on the phone in advance)
8. **Find phone –**
Press and hold for more than 5 seconds until the green light flashes 1 time
9. **Take photo/Video**
Press and hold for 0.5 seconds
10. **Clear pairing –**
Press and hold for more than 10 seconds until the green light flashes 2 times

Indicator Description

- **Charging indication**

When connected to the charging power supply, the red light will light up to indicate that it is charging, and it will automatically turn off when it is fully charged.

- **Bluetooth wake-up indicator**

When Bluetooth is woken up, a green light flashes to indicate that Bluetooth wakes up normally.

- **Pairing indication**

When pairing, a green light flashes to indicate a successful connection.

- **Look for the phone mode indicator**

When entering the Find Phone mode, the green light flashes once to indicate that the search signal has been sent.

- **Clear the pairing indication**

Long press to clear that after the pairing is successful, the green light flashes twice to indicate success.

Scan the QR code to download the Button Control APP



Warning Statement


This device complies with part 15 of the FCC Rules. Operation is subject to the following two conditions: (1) This device may not cause harmful interference, and (2) this device must accept any interference received, including interference that may cause undesired operation. Any Changes or modifications not expressly approved by the party responsible for compliance could void the user's authority to operate the equipment.

Note: This equipment has been tested and found to comply with the limits for a Class B digital device, pursuant to part 15 of the FCC Rules. These limits are designed to provide reasonable protection against harmful interference in a residential installation. This equipment generates uses and can radiate radio frequency energy and, if not installed and used in accordance with the instructions, may cause harmful interference to radio communications. However, there is no guarantee that interference will not occur in a particular installation. If this equipment does cause harmful interference to radio or television reception, which can be determined by turning the equipment off and on, the user is encouraged to try to correct the interference by one or more of the following measures:

- Reorient or relocate the receiving antenna.
- Increase the separation between the equipment and receiver.
- Connect the equipment into an outlet on a circuit different from that to which the receiver is connected.
- Consult the dealer or an experienced radio/TV technician for help.

This equipment complies with FCC radiation exposure limits set forth for an uncontrolled environment.

Documents / Resources

	ctrl4U Button Control [pdf] User Guide N100, 2BHCI-N100, 2BHCIN100, Button Control, Control
---	--

References

- [User Manual](#)

Manuals+, Privacy Policy

This website is an independent publication and is neither affiliated with nor endorsed by any of the trademark owners. The "Bluetooth®" word mark and logos are registered trademarks owned by Bluetooth SIG, Inc. The "Wi-Fi®" word mark and logos are registered trademarks owned by the Wi-Fi Alliance. Any use of these marks on this website does not imply any affiliation with or endorsement.