

ctfassets Traffic And Pedestrian Control Policy Instructions

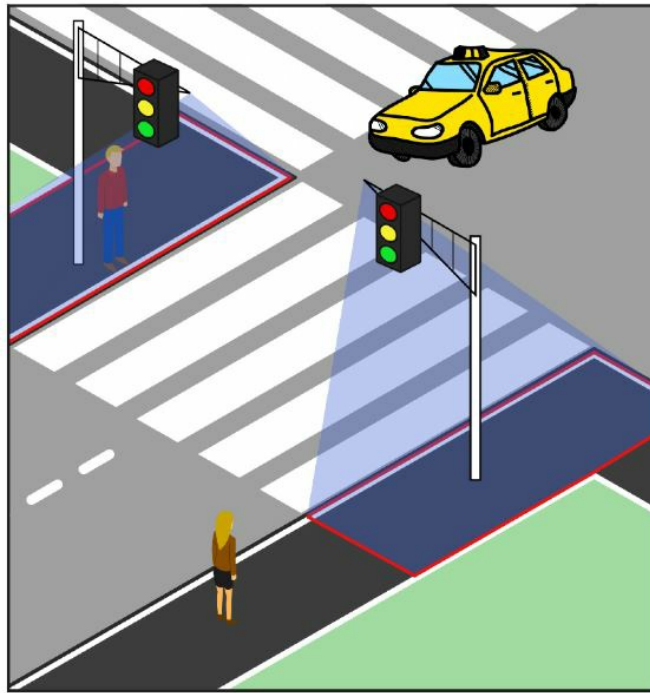
[Home](#) » [ctfassets](#) » ctfassets Traffic And Pedestrian Control Policy Instructions 

Contents

- 1 ctfassets Traffic And Pedestrian Control Policy
- 2 Specifications
- 3 Product Usage Instructions
- 4 FAQ
- 5 TRAFFIC AND PEDESTRIAN CONTROL POLICY
- 6 RESPONSIBILITIES
- 7 GENERAL REQUIREMENTS
- 8 Component Parts of a Temporary Traffic Control Zone
- 9 Use of Hand-Signaling Devices by Flaggers
- 10 Documents / Resources
 - 10.1 References

ctfassets

ctfassets Traffic And Pedestrian Control Policy



Specifications

- Product Name: Traffic and Pedestrian Control Policy
- Version: 2.22.23
- Purpose: To outline responsibilities and expectations for installing traffic and pedestrian control measures
- Additional Requirements: Manual of Uniform Traffic Control Devices (MUTCD)

Product Usage Instructions

1. Purpose

The purpose of the traffic control policy is to provide a tool for employee-owners to implement and oversee traffic control scenarios. It outlines responsibilities and expectations for installing traffic and pedestrian control measures.

2. Responsibilities

The project team is responsible for implementing and overseeing traffic control measures. They are expected to follow the guidelines outlined in this policy.

3. General Requirements

Various general requirements need to be met when implementing traffic control measures. These requirements ensure the safety and efficiency of the control zone.

3.1 Signage

Appropriate signage must be installed in the traffic control zone to provide clear instructions to drivers and pedestrians. The signage should follow the guidelines set by the Manual of Uniform Traffic Control Devices (MUTCD).

3.2 Component Parts of a Temporary Traffic Control Zone

The exhibit labeled 3.LL.001 provides a visual representation of the component parts required for a temporary traffic control zone. These components must be properly installed and maintained to ensure the safety of all individuals in the control zone.

3.3 Use of Hand-Signaling Devices by Flaggers

The exhibit labeled 3.LL.002 demonstrates the proper use of hand-signaling devices by flaggers. Flaggers play a crucial role in directing traffic and ensuring the safety of pedestrians. It is important to follow the guidelines outlined in the exhibit when using hand-signaling devices.

FAQ

Q: What is the purpose of the traffic control policy?

A: The purpose of the traffic control policy is to outline responsibilities and expectations for installing traffic and pedestrian control measures.

Q: Where can I find additional requirements for traffic control?

A: Additional requirements can be found in the Manual of Uniform Traffic Control Devices (MUTCD).

Q: Who is responsible for implementing traffic control measures?

A: The project team is responsible for implementing and overseeing traffic control measures.

TRAFFIC AND PEDESTRIAN CONTROL POLICY

WE DON'T GET ROAD RAGE.

PURPOSE

The purpose of the traffic control policy is to outline the responsibilities and expectations for installing traffic and pedestrian control measures (herein described as traffic control). This policy is not intended to replace any legislated requirements but merely to provide a tool for employee-owners to implement and oversee traffic control scenarios. Additional requirements may be found in the Manual of Uniform Traffic Control Devices or MUTCD (current revision).

RESPONSIBILITIES

Project Team

- The project team will ensure the appropriate traffic and pedestrian controls are implemented, either through Company installation of said devices or via delegation to a subcontractor. When subcontractors are responsible for traffic control, the subcontractor has sole responsibility for installation, maintenance, and removal of these devices. The Company will operate in an oversight capacity in these situations.
- Submit traffic control plans, as required, to authorities having jurisdiction.
- Evaluate, observe, and revise traffic control plans, as required

GENERAL REQUIREMENTS

Signage

- All required signage will be constructed to comply with §29 CFR 1926.200, ANSI Z35.1-1968, and the 2009 edition of the MUTCD (Manual of Uniform Traffic Control Devices). Additional signage may be added on a case-by-case basis.
- Sign spacing and traffic/pedestrian control zones will be dictated by the applicable local requirements.
- Signs will be maintained so the message is legible and the sign is readily visible. Makeshift signs will not be used for the purposes of controlling pedestrians or traffic.
- Signs will be removed when the work is complete, the sign is no longer applicable, or if the sign has been damaged.

Flagging

- Prior to any flagging on any public roadway, employee-owners shall be trained in proper flagging techniques. If flagger training is required contact the Safety Manager.
- Traffic authorities or Law Enforcement Officers may be used when the situation requires traffic direction.
- Flaggers will wear Class II reflective vests in accordance with ANSI requirements. When employee-owners will be working during hours of darkness and be exposed to vehicle traffic, additional reflective devices, Class III reflective vests, and lighting will be provided.
- Flaggers will use STOP/SLOW paddles with a 6' high paddle for stopping and releasing traffic. Red flags may be used in emergency situations only.
- A method of communication will be maintained between flaggers. This may be accomplished through voice, hand signals, two-way radios, etc.
- Flaggers must remain at their station until relieved by another trained and authorized employee-owner.
- Flaggers must remain attentive, courteous, respectful, aware of the surroundings, and in control of their position at all times.
- Flaggers should be positioned at the shoulder/edge of the road while flagging. Flaggers should move out of this position once traffic has stopped and in front of the lead vehicle.
- Cell phone use is prohibited during flagging operations.

Barricades

- Protective barricades may need to be installed to prevent access to the Company work areas by vehicles, pedestrians, and all unauthorized individuals.
- All required barricades will be constructed to comply with §29 CFR 1926.200, ANSI Z35.1-1968, and the current edition of the MUTCD (Manual of Uniform Traffic Control Devices). Additional barricades may be added on a case-by-case basis.
- When work requires that a traffic lane(s) be shut down, a MUTCD-compliant arrow board shall be used to direct traffic out of said lane(s).
- Barricade type and spacing will be dictated by the applicable local, state, and federal requirements.

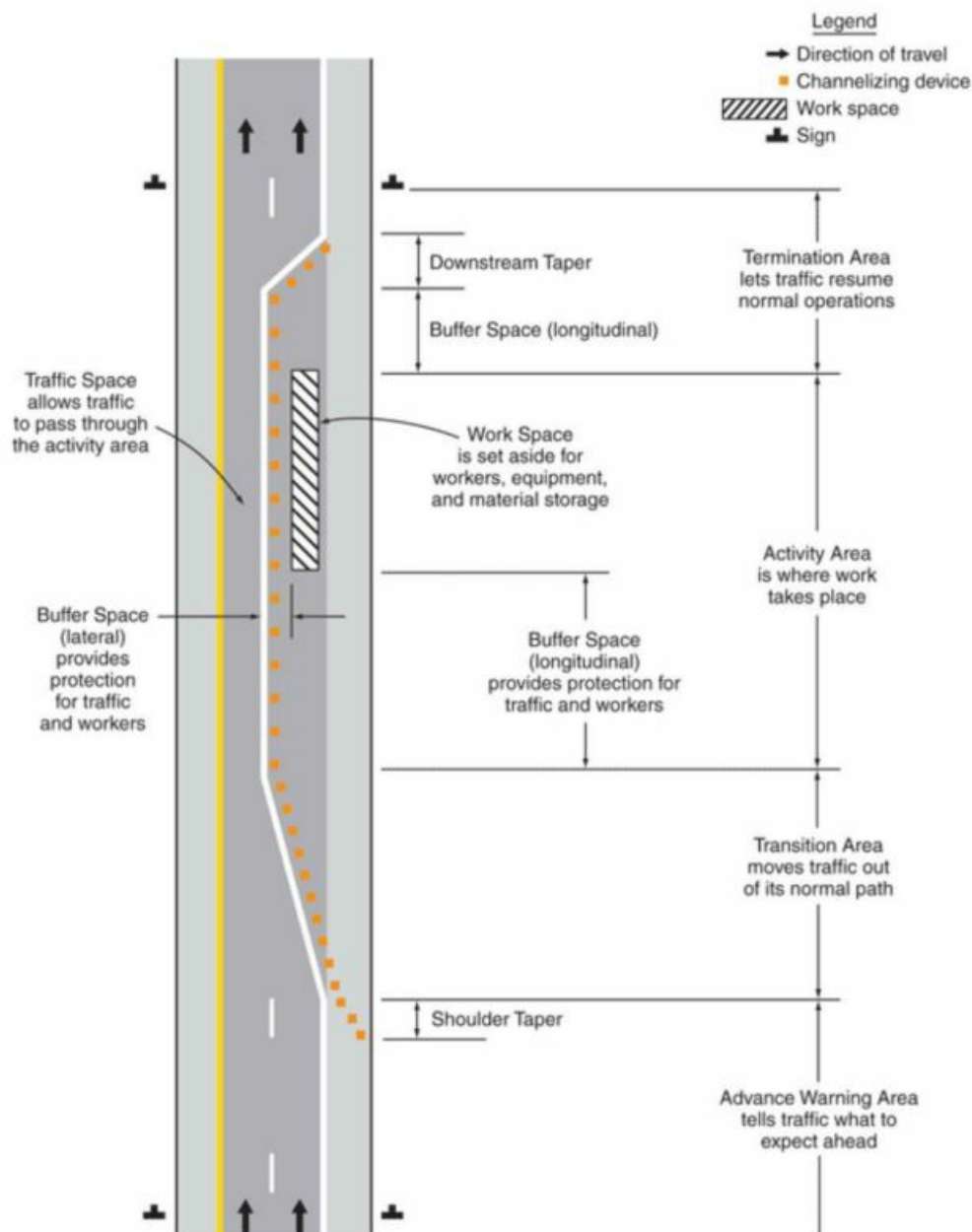
Pedestrian Control

- When pedestrian traffic is re-routed or impacted by construction activities appropriate signage and barricades will be installed prior to the construction activities.
- Signage will be installed at the closure points for advanced warning. When required, alternative routes will be provided for pedestrian traffic.
- If a situation arises during the course of operations that would impact public or pedestrian traffic, barricades or a monitor should be used temporarily, until more permanent methods can be installed.

On-site Traffic Control

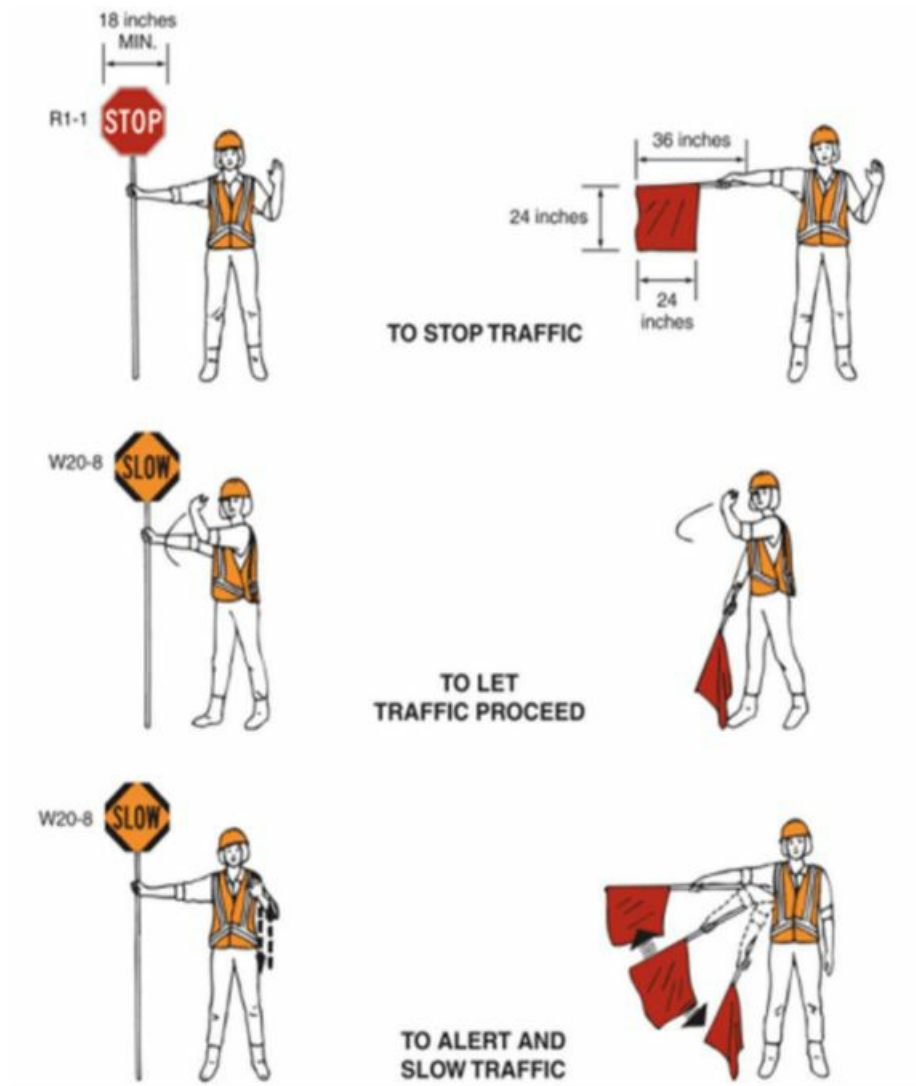
- Vehicles and equipment will operate on the jobsite in the designated locations and drive areas. Additional signage may be installed on the project to warn of the hazards of equipment and vehicles.
- Equipment and vehicles with a restricted view must be equipped with a functioning backup alarm.

Component Parts of a Temporary Traffic Control Zone



Use of Hand-Signaling Devices by Flaggers

PREFERRED METHOD STOP/SLOW Paddle / EMERGENCY SITUATIONS ONLY Red Flag





The purpose of the traffic control policy is to outline the responsibilities and expectations for entering traffic

control measures (such as traffic control, is not intended to replace any validated measurement.

to provide a tool for employee owners to implement a traffic control operation. Additional requirements are

- The project team will ensure the appropriate tax collection is made as indicated, after the

- The project team will ensure the appropriate tax collection is made as indicated, after the

- Submit traffic control plans, as required, to each jurisdiction.
- Evaluate, eliminate, and/or revise traffic control plans.

CFR 1305.200 AND ZIS 1-1968, and the 2000 SOURCE Manual of Uniform Traffic Control Devices.

CFR 1305.200 AND ZIS 1-1968, and the 2000 SOURCE Manual of Uniform Traffic Control Devices.

- Signs will be maintained so the message is highly visible. Make-shift signs will not be used for purposes of controlling pedestrians or traffic.
- Signs will be removed when the work is complete, longer applicable, or if the sign has been damaged.

- Traffic authorities or Law Enforcement Officers in charge the situation, coordinate traffic diversion.

- Traffic authorities or Law Enforcement Officers in charge the situation, coordinate traffic diversion.

- flaggers will wear Class II reflective vests in accordance with OSHA requirements. When employees are working during hours of darkness and be exposed to additional reflective devices, Class II reflective lighting will be provided.
- flaggers will use ICOP, SLW paddles with a 4' for stopping and releasing signal. Red flag may emergency situations only.
- A method of communication will be maintained between flaggers. This may be accomplished through radio signals, two-way radios, etc.
- flaggers must remain at their station until released by authorized employee-owner.
- flaggers must remain alertness, courteous, and in the surroundings, and in control of their position.
- flaggers should be positioned at the shoulder's road while flagging. flaggers should move out of the lane once the vehicle has stopped and in front of the back of the vehicle.
- Cell phone use is prohibited during flagging.

Access to the Company's web site is restricted to authorized users only, and all unauthorized individuals.

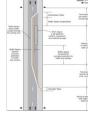
- Adequacy of barricades will be determined by use of FHWA 1335-200, AASHTO 1-1998, and the current MUTCD (Manual of Uniform Traffic Control). Additional barricades may be added on a case-by-case basis.
- When work requires that a traffic lane(s) be closed, MUTCD-compliant arrow boards shall be used (out-of-lane lane(s)).
- Barricade type and spacing will be dictated by local, state, and federal requirements.

- Signage will be installed at the source points to

- if a situation arises during the course of operation, impact public or pedestrian traffic, barricades should be used temporarily, until more permanent can be installed.

Co-installed on the project is earth-retention specialist

- Equipment and vehicles with a restricted view is equipped with a functioning backup alarm.

[illegible]

[ctfassets Traffic And Pedestrian Control Policy](#) [pdf] Instructions
Traffic And Pedestrian Control Policy, Pedestrian Control Policy, Control Policy, Policy

References

- User Manual