



# CTA PAD-SICCB Wireless Inductive Charging Case Security Lock Instruction Manual

[Home](#) » [CTA](#) » CTA PAD-SICCB Wireless Inductive Charging Case Security Lock Instruction Manual 

## Contents

- [1 CTA PAD-SICCB Wireless Inductive Charging Case Security Lock](#)
- [2 CONTENTS](#)
- [3 Power Supply](#)
- [4 Inductive Charging Case](#)
- [5 INSTALLATION](#)
- [6 CONTACT](#)
- [7 Documents / Resources](#)



**CTA PAD-SICCB Wireless Inductive Charging Case Security Lock**

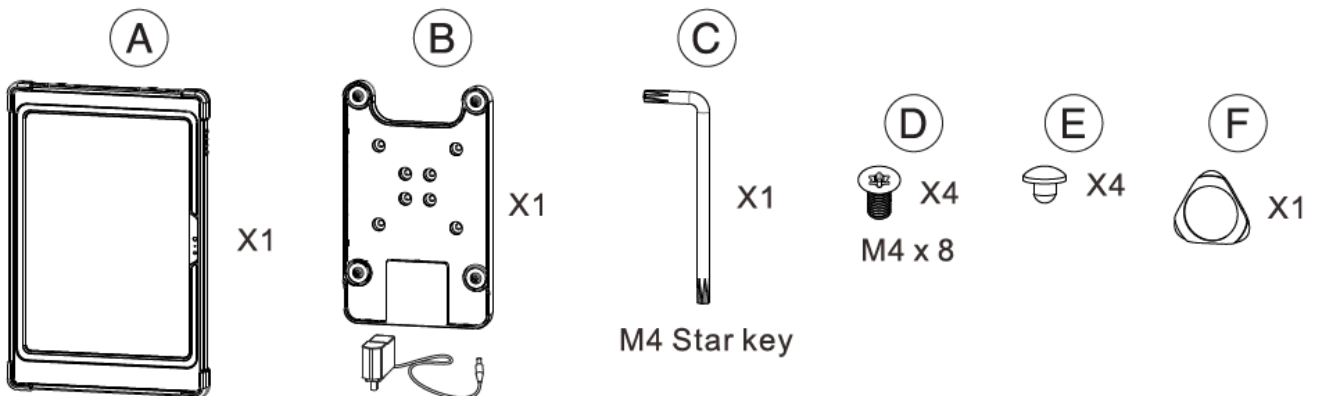


**Caution:** For proper results, please make sure your device is properly aligned with the inductive charging plate

**Caution:** Please do not place or store the product on or near high-temperature areas like heating devices, open flame, or in hot cars in extreme heat.

**Caution:** Please do not place or store the product in or near water, steam, or in any wet, humid, or damp places.

## CONTENTS



## Power Supply

- **Input:** AC 100-240V 50/60Hz
- **Output:** DC12V 1.5A
- **Rating power:** 18W
- **Cable Length:** 1.8M
- **DC Plug:** 5.5\*2.1mm male DC Plug

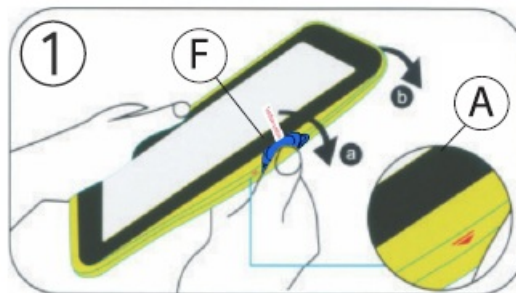
## Inductive Charging Case

- **Qi Standard:** V1.2.4
- **Input:** DC12V 1.3A
- **Output:** DC5V 2.4A(Max.)
- **Rating Power:** 15W
- **Efficiency:** 80-85% (Max.)
- **Inductive Distance:**3-6mm

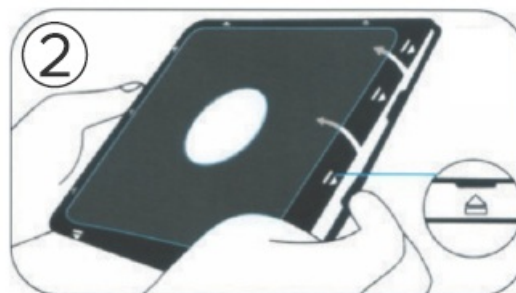
## INSTALLATION

### Inserting Tablet into Enclosure

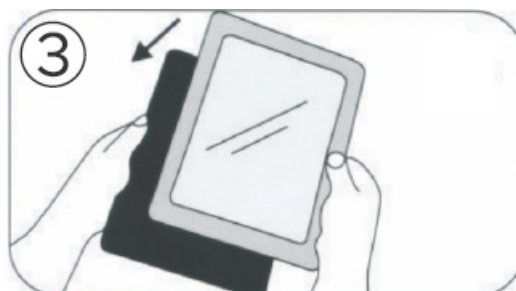
1. Peel the external silicone sleeve from the internal hard case using component (F).



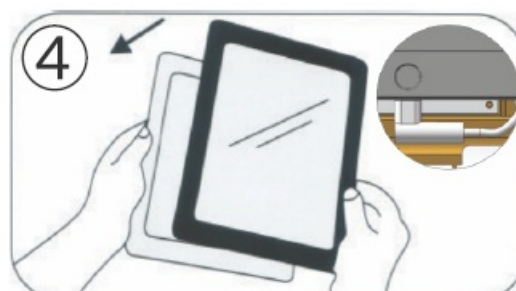
2. To open case, apply gentle pressure to the small clips (noted on the diagram by arrows). The internal hard case will open when all four sides are unclipped.



3. Insert the iPad into the back portion of the hard cover.



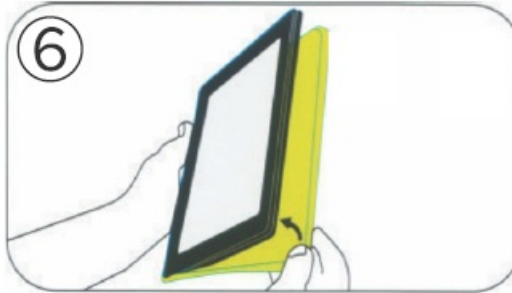
4. Once the tablet device is inside, plug the charging cable into the power socket. Then place the internal front(hard) cover on top of the case, and gently clip all four sides shut.



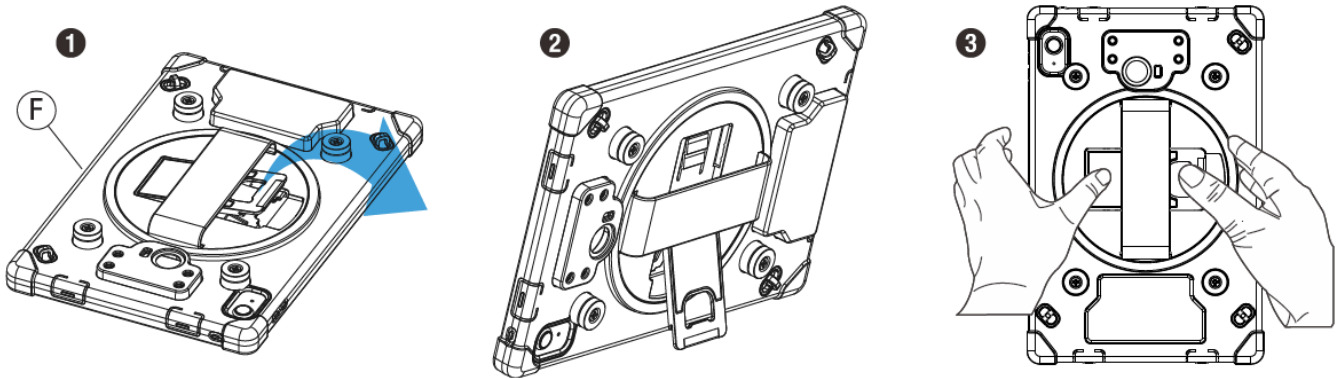
5. Tighten the anti-theft screw with the included star key (C) if you want the case security.



6. Reinstall the external silicone rubber sleeve.

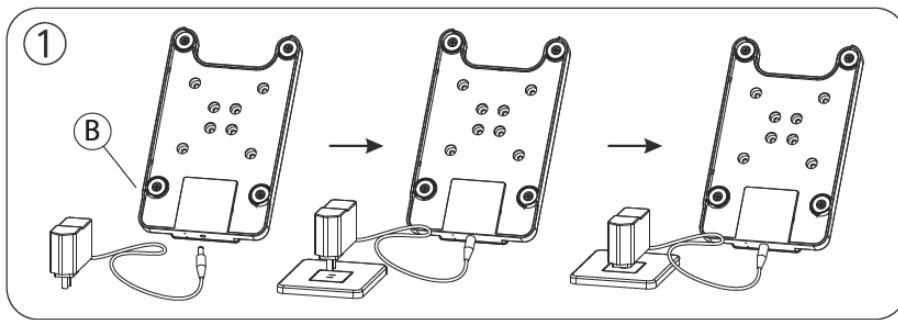


**Reinstall the external silicone rubber sleeve.**

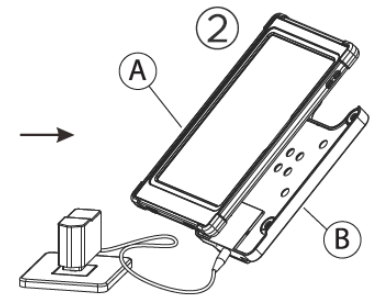


1. Locate kickstand at case (A) rear and fold out underneath strap.
2. Display tablet at desired viewing angle.
3. Press kickstand in to return to handheld mode.

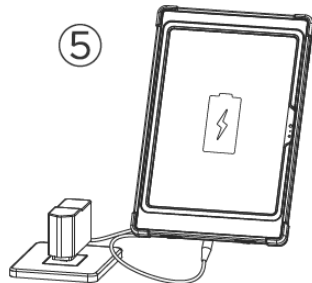
### **Charging the Tablet Device**



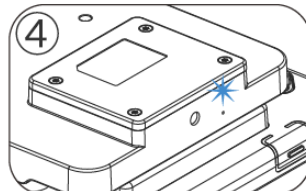
Connect the AC/DC power supply to the charging plate as shown above.



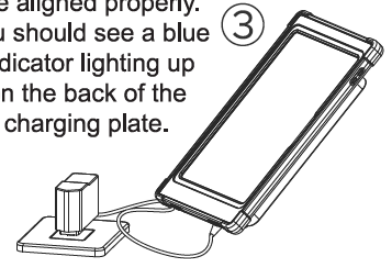
Make sure that the charging case and the back charging plate are aligned properly. You should see a blue indicator lighting up on the back of the charging plate.



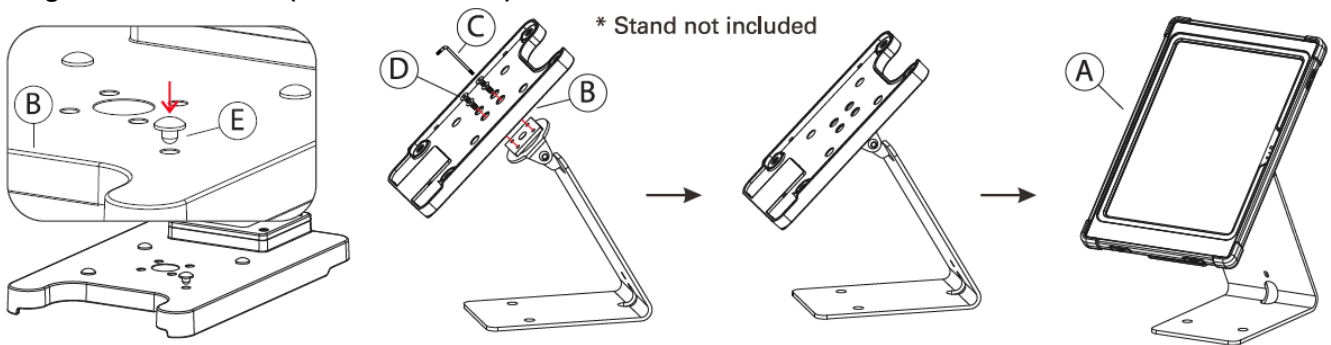
There should be a power level indicator on the tablet screen.



The blue indicator light indicates that the tablet device is properly connected to the inductive charging plate.



### Using with kiosk stand (ADD-ICCSTAND)




- **4A.** Place component (E) in the (4) outer holes in the back of the charging plate.
- **4B.** Align VESA holes of the charging plate (B) and the stand, and rotate in (4) screws (D) using the included allen key (C) until securely tightened.
- **4C.** Place the tablet device on top of the charging plate by aligning the magnets.

### CONTACT

- 36 Taaffe Place Brooklyn, NY 11205
- [support@ctadigital.com](mailto:support@ctadigital.com).
- 778-991-0169
- [www.ctadigital.com](http://www.ctadigital.com).

### Documents / Resources

	<p><a href="#">CTA PAD-SICCB Wireless Inductive Charging Case Security Lock</a> [pdf] Instruction Manual PAD-SICCB Wireless Inductive Charging Case Security Lock, PAD-SICCB, Wireless Inductive Charging Case Security Lock, Inductive Charging Case Security Lock, Charging Case Security Lock, Case Security Lock, Security Lock, Lock</p>
--	---