



CTA PAD-PARAWM Prem Sec Wall and Desk Encl For Tab Instruction Manual

[Home](#) » [CTA](#) » CTA PAD-PARAWM Prem Sec Wall and Desk Encl For Tab Instruction Manual 

CTA PAD-PARAWM Prem Sec Wall and Desk Encl For Tab Instruction Manual

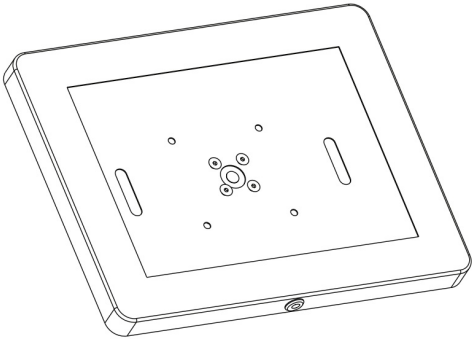


Contents

- [1 CONTENTS](#)
- [2 INSTALLATION](#)
- [3 Installing VESA Wedge to a Wall or Outlet](#)
- [4 Setting up Enclosure to Wedge](#)
- [5 Setting up Device & Enclosure](#)
- [6 Anti-Theft Security Cable Setup](#)
- [7 Documents / Resources](#)
- [8 Related Posts](#)

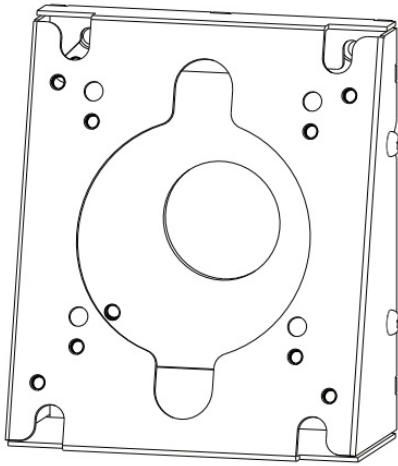
CONTENTS

- Security Enclosure

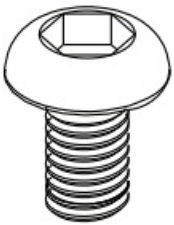


x1

- x1



- M5 Hex Screw



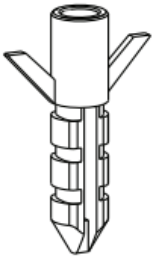
xb

- Security Lock Key



1x

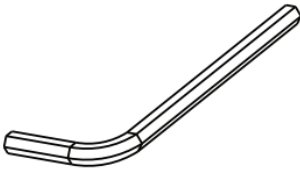
- 4x



- 4x



- M5 Allen Key



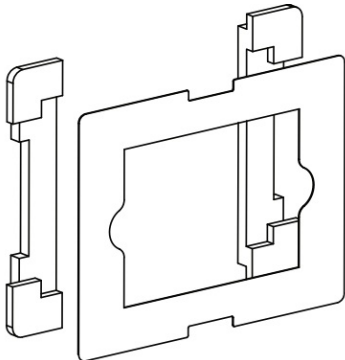
x1

- Security LockKey



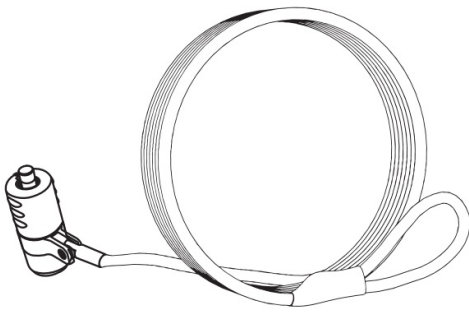
x1

- Foam Adapter & Sheet Bundle



x1

- Anti-theft Security Cable

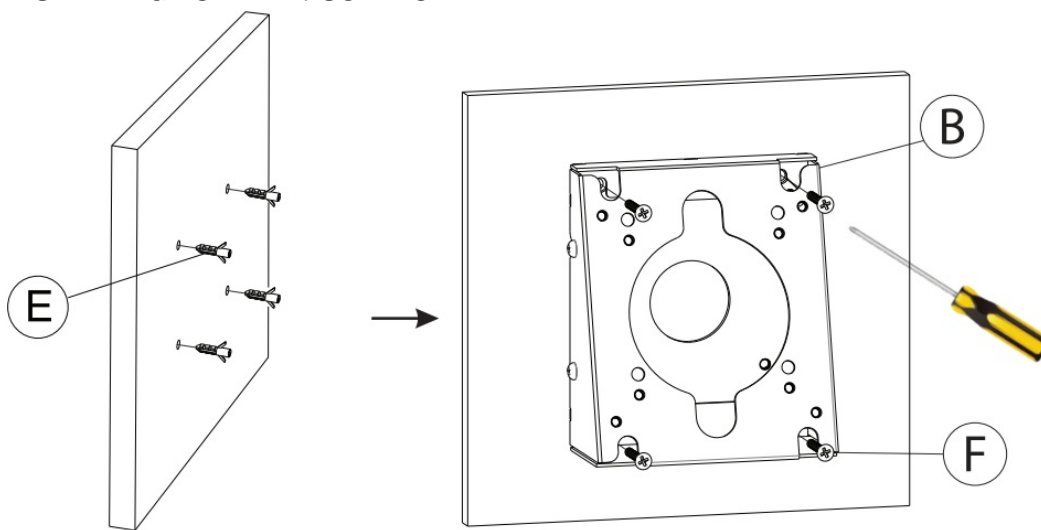


x1

INSTALLATION

Installing VESA Wedge to a Wall or Outlet

INSTALLING TO WALL / SURFACE

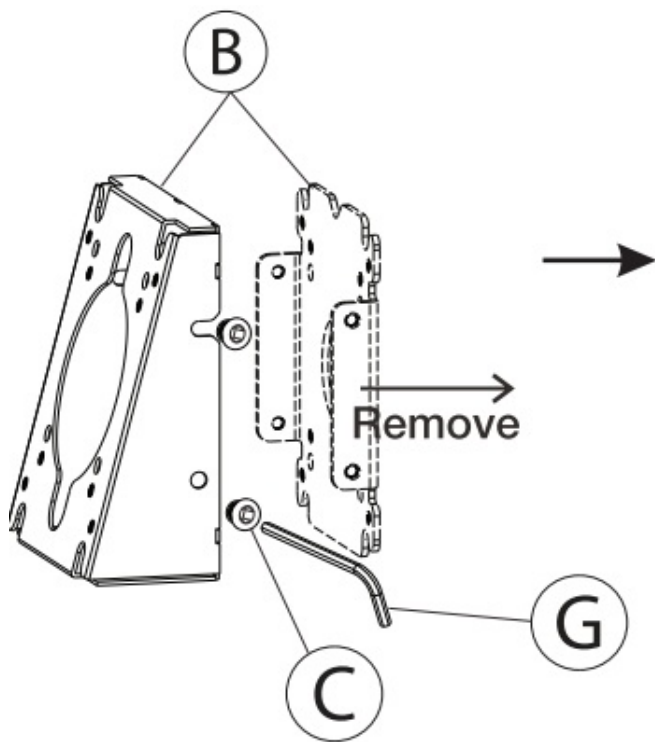


“Screwdriver for illustration and not included

1A. Pre-drill holes into wall using a power drill(not included). Then insert provided anchors (E). Align holes from VESA Wedge (B) to wall holes and rotate in screws (F) using a screwdriver (not provided) until securely tightened.

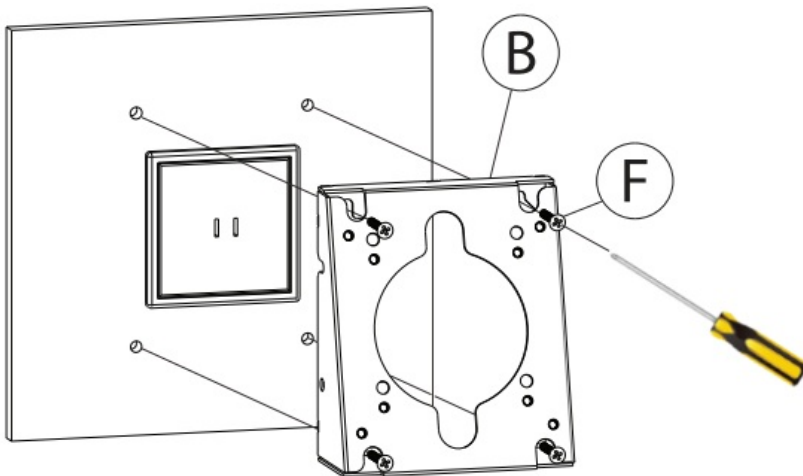
INSTALLING TO OUTLET

1B. Remove back provided tool (G) and unscrewing all (4) screws (C) as shown above.



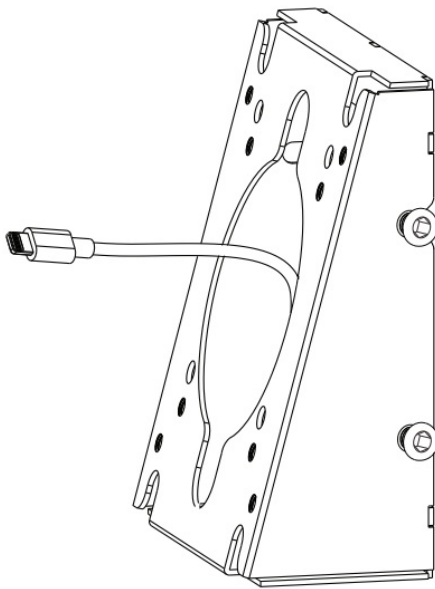
Screwdriver for illustration and nonincluded

1C. Align holes from the front component of VESA Wedge (B) and turn in screws (F) using a screwdriver (not provided) until securely tightened.

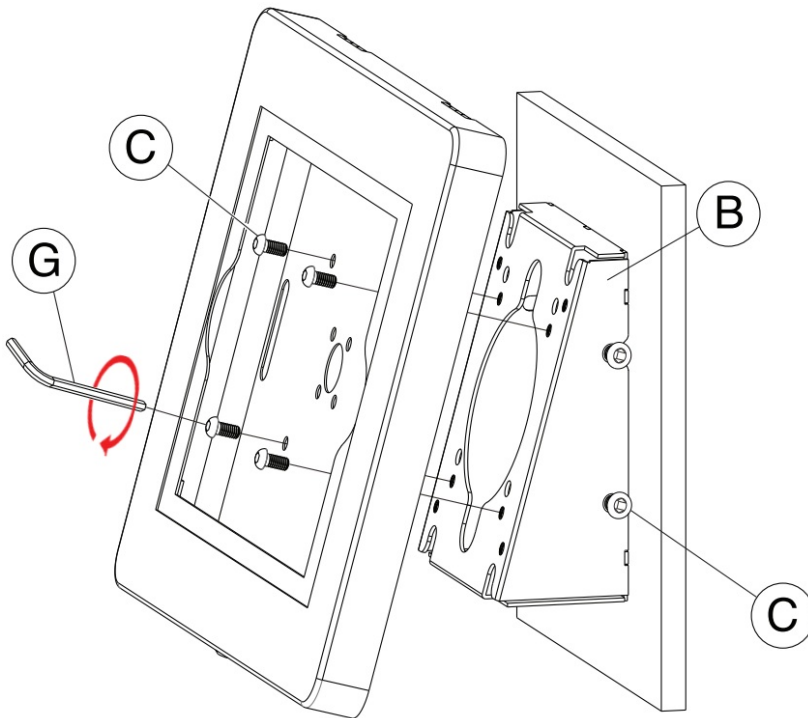


Setting up Enclosure to Wedge

2A. With the wedge already attached to a surface, setup any needed wiring through the wall outlet and wedge. It may also be just residing inside the wedge space interior as needed as well. (Not included). Make sure to fish out the wire from the wedge so it's primed for connecting to the tablet device.



2B. Align VESA holes of tablet security enclosure (A) to that of the wedge (B). Rotate in (4) screws (C) from the front using provided tool (G) until securely fastened.

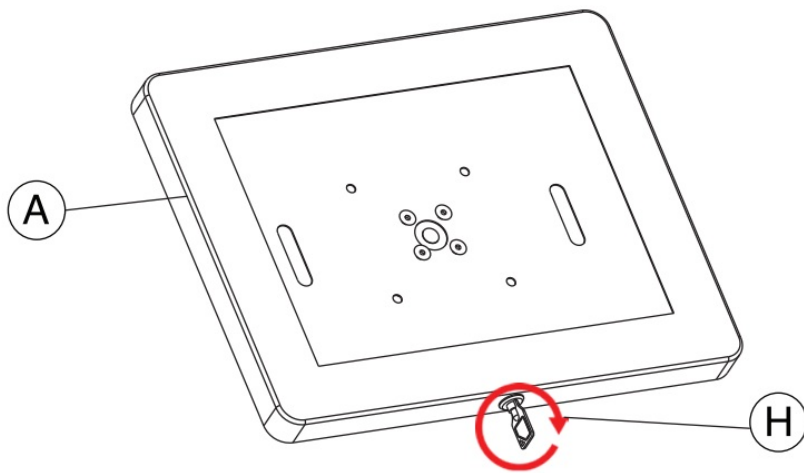


3A. Align enclosure holes (A) to VESA wedge holes (B) then tun in screws (C) using provided tool (G)

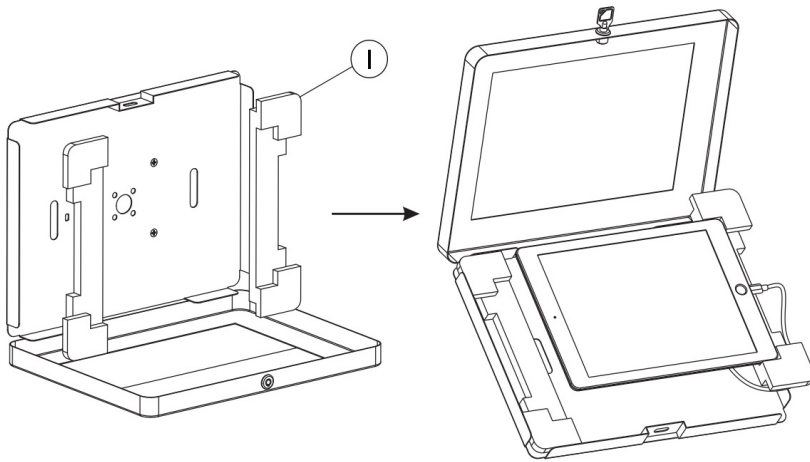
Setting up Device & Enclosure

Tablet shown for illustration and NOT INCLUDED.

3A. Lock or unlock your tablet enclosure with security key (H) as shown. |

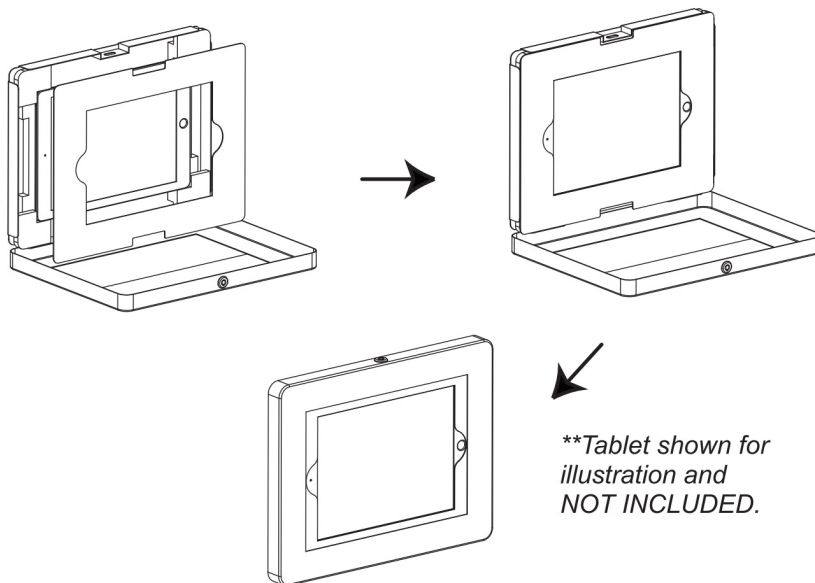


38. Find the appropriate size foam padding (1) for the tablet you wish to use. Make sure device is compatible for the enclosure. Lay in device and connect any cables/cords as needed.



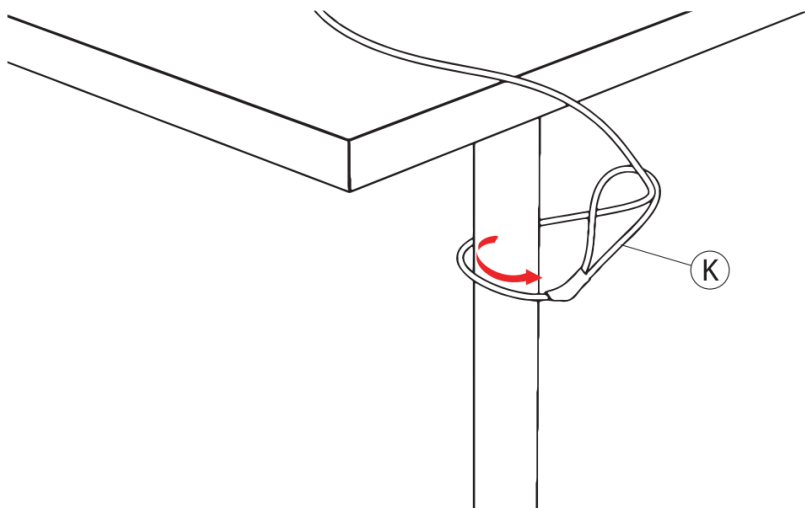
Tablet shown for illustration and NOT INCLUDED

3C. If needed, lay-in correct included masking insert (1). Close and lock enclosure afterwards and you're set



Anti-Theft Security Cable Setup

4A. Take the looped end of lock cable (K) and wrap it around the leg as illustrated. Take the opposite end and fish it through the loop and connect it to the k-slot location.



4B. Attach cable lock head (K) onto the enclosure k-slot location (A) then insert provided key (J) and turn it clockwise. Remove key to lock and secure.





Adjusting Orientation



Rotate enclosure portrait or landscape to the preferred orientation,



36 Taaffe Place Brooklyn, NY 11205



support@ctadigital.com



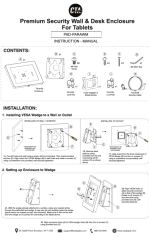
888-733-4448



www.ctadigital.com



Documents / Resources

	<p>CTA PAD-PARAWM Prem Sec Wall and Desk Encl For Tab [pdf] Instruction Manual PAD-PARAWM Prem Sec Wall and Desk Encl For Tab, PAD-PARAWM, Prem Sec Wall and Desk Encl For Tab, Desk Encl For Tab, Encl For Tab</p>
---	---

[Manuals+](#)