



CTA PAD-LOCVB Digital Full Rotation Desk Mount Installation Guide

[Home](#) » [CTA](#) » CTA PAD-LOCVB Digital Full Rotation Desk Mount Installation Guide 

Contents

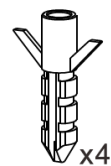
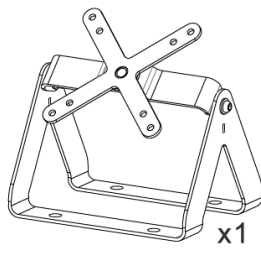
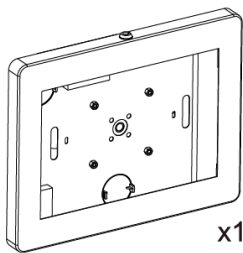
- [1 CTA PAD-LOCVB Digital Full Rotation Desk Mount](#)
- [2 Contents](#)
- [3 Installation](#)
- [4 Mounting Installation](#)
- [5 Documents / Resources](#)
 - [5.1 References](#)
- [6 Related Posts](#)



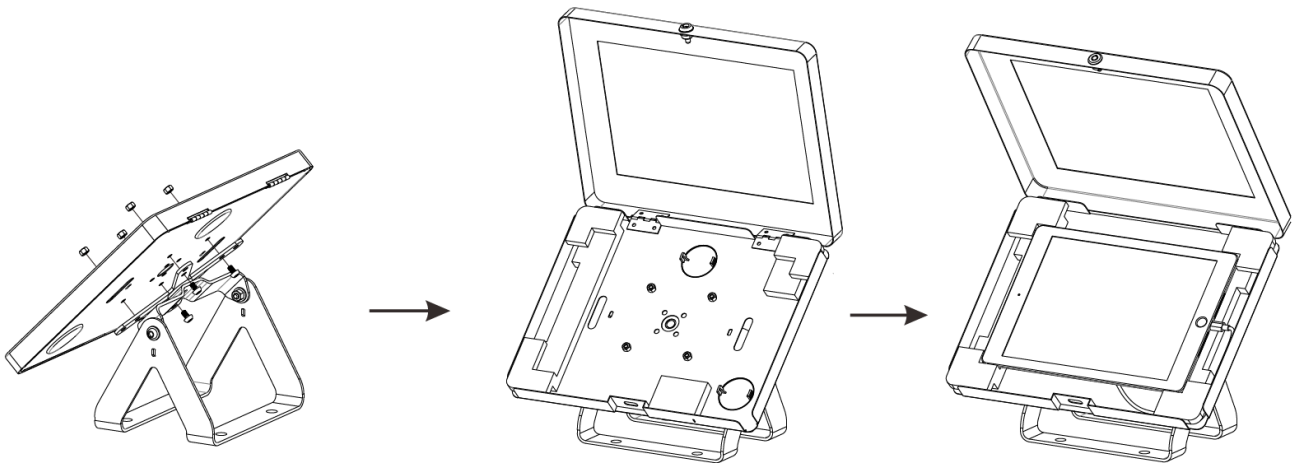
CTA PAD-LOCVB Digital Full Rotation Desk Mount



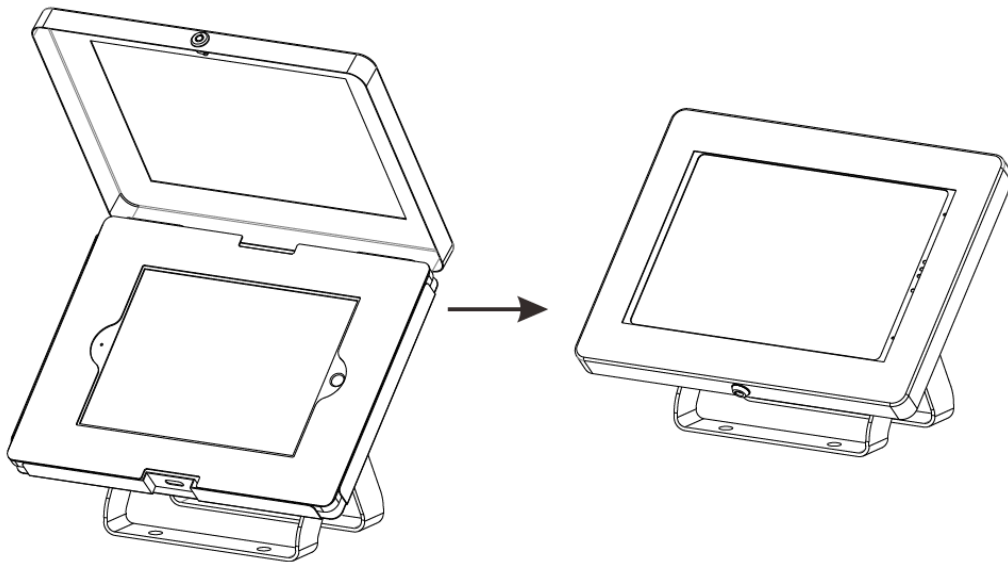
Contents



Installation

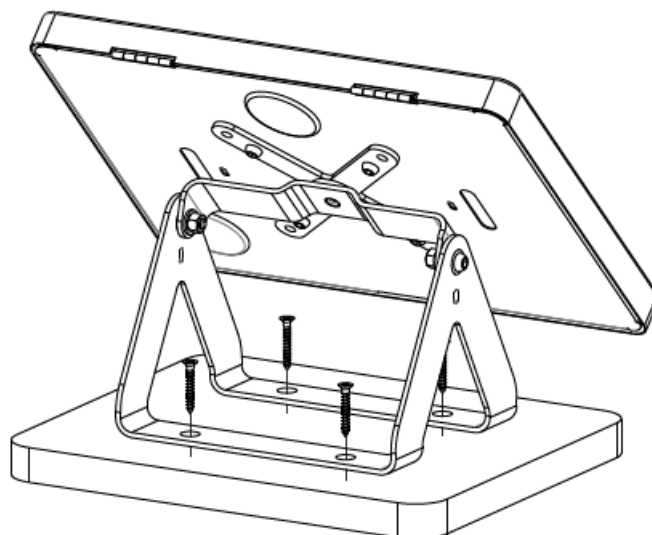


1. Install Enclosure to VESA. Screw in provided nails and nuts as illustrated (Shown Above)
2. Insert appropriate foam pieces that is compatible to your tablet (Shown Above)
3. Insert Tablet as shown. Plug in power cable to tablet and cable route through the back (Shown Above)

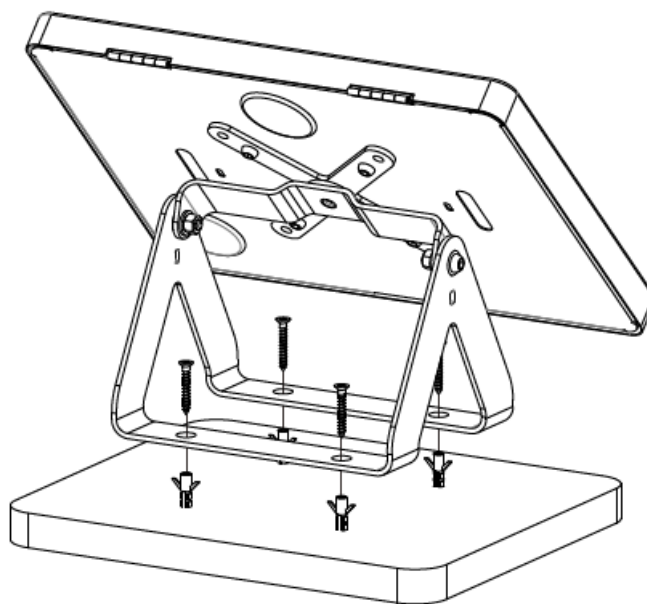


4. Place the appropriate provided tablet cover to match your tablet (Shown Above)
5. Close the enclose and lock to complete setup (Shown Above)

Mounting Installation



Mounting to solid concrete or block desk (Shown Above)



Mounting to stud desk (Shown Above)

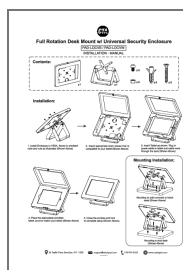
36 Taaffe Place Brooklyn, NY 11205

support@ctadigital.com

778-991-0169

www.ctadigital.com

Documents / Resources



[CTA PAD-LOCVB Digital Full Rotation Desk Mount](#) [pdf] Installation Guide
PAD-LOCVB, PAD-LOCVB Digital Full Rotation Desk Mount, Digital Full Rotation Desk Mount, Full Rotation Desk Mount, Desk Mount

References

- ^{MH} [Search - Manual-Hub.com](#)