

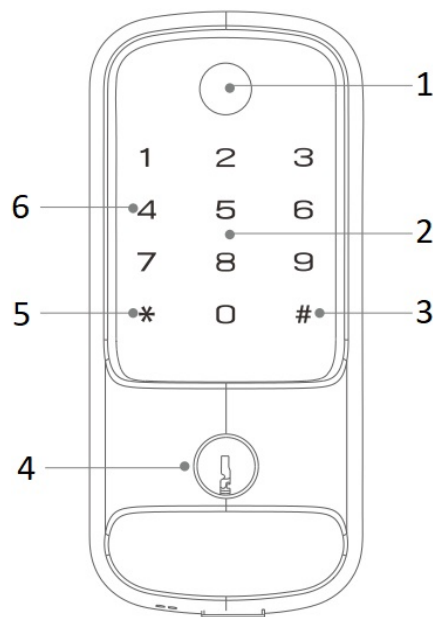
# CSLP iLock 402C Smart Lock Instruction Manual



Smart Lock

iLock 402C

Exterior Assembly



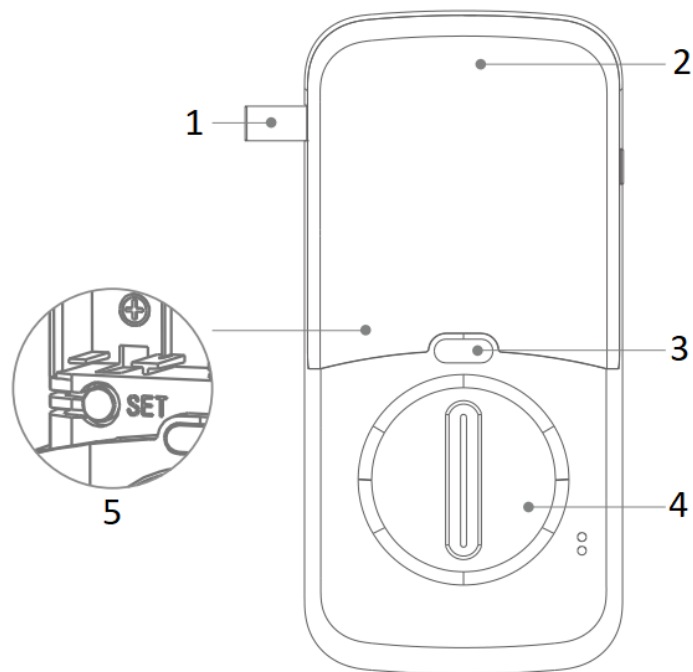
- 1. Fingerprint Sensor
- 2. Card Reader
- 3. Confirm
- 4. Cylinder
- 5. Return
- 6. Keypad

- 1. Keypad: Used to enter the code and unlock from outside.
- 2. Fingerprint Sensor: Used to press finger and unlock from the outside.
- 3. \*: Return/Cancel.
- 4. #: Confirm.

Press # for 2 seconds to lock the door quickly.

Press \*# and administrator to enter system setting.

Interior Assembly



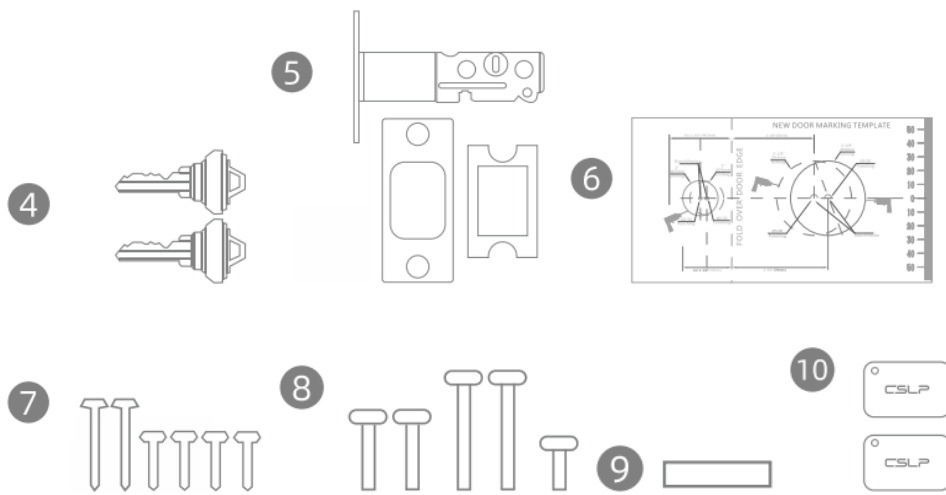
- 1. DoorSensor
- 2. Battery Cover
- 3. One-Touch Lock/unlock
- 4. Thumb Turn
- 5. Set Button

- 1. Set Button: Short press 1 second to enter system management.  
Press and hold for 5 seconds to restore the factory settings.
- 2. Thumb Turn: Used to lock and unlock manually from the inside.
- 3. One-Touch Lock/unlock: Lock/unlock the deadbolt with 1-touch locking.

#### Spare And Accessory Parts

- (1) Interior Assembly
- (2) Exterior Assembly
- (3) Mounting Plate
- (4) Override Keys(2pcs)
- (5) Deadbolt Assembly & Strike Plate
- (6) Drilling Template
- (7) Strike Screws(4) & Deadbolt Screws(2)
- (8) Mounting Screws(8)
- (9) Door Magnet
- (10) Cards (2pcs)





Set up your administrator password

Press “\*#” to verify administrator

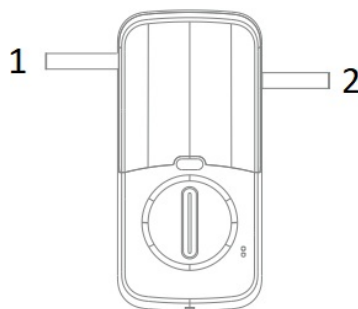


Enter default password 123456# to set your administrator password




Please enter your administrator password twice to set up

Our default setting is right door opening. If you door is left opening, please set up your opening function.



1. Left opening
2. Right opening

 If you find that your smart door lock cannot be locked, it may be due to incorrect door opening direction settings.

Door opening function setting

Press “\*#” to verify administrator



Enter administrator password and #



Please press 3 in system management



Please press 1 in Door opening function setting



Press 1 to switch between left and right.(Our default setting is right door opening.)

## Network Setting

Press “\*#” to verify administrator



Enter administrator password and #



Please press 4 in Network setting



Open your Tuya App to add advice

Download Tuya APP From Google Play or Apple Store. Search "Tuya Smart".



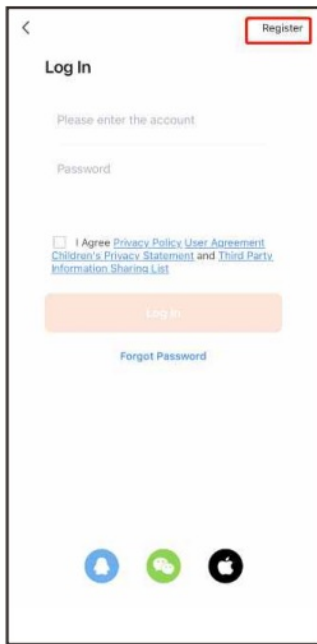
---

Scan the QR code to download Tuya Smart APP.



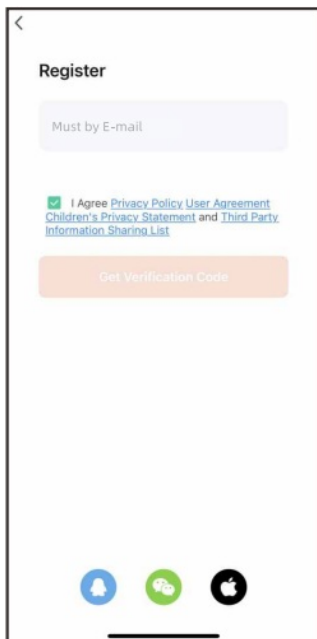
### Step 1:

Tap on register to get started!



### Step 2:

Register MUST by E-Mail.



### Step 3: Enter Verification Code

<

Enter Verification Code

I

A verification code has been sent to your email  
lydiazhang@ztime.com Resend (33s)

[Didn't get a code?](#)

1

2  
ABC

3  
DEF

4  
GHI

5  
JKL

6  
MNO

7  
PQRS

8  
TUV

9  
WXYZ

0

Step 4: Set Password

<

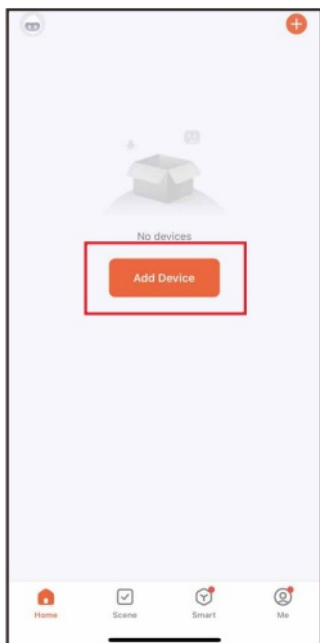
Set Password

Password

Use 6-20 characters with a mix of letters and numbers

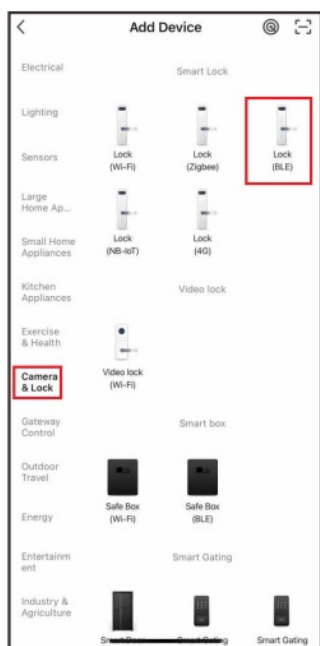
Done

Step 5: Add Device



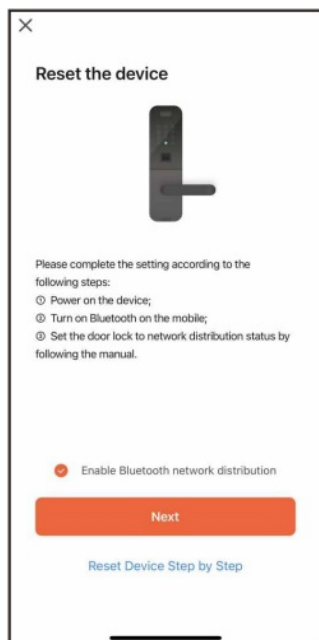
### Step 6:

tap on camera&Lock> Lock (BLE)

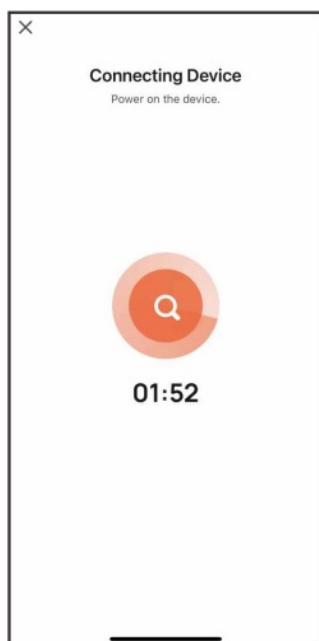


### Step 7:

check your smart lock in the Network configuration



**Step 8:**  
waiting for app to find your device



**Step 9:**  
Tap done and finish setting





## Language Setting

Press “\*#” to verify administrator



Enter administrator password and #



System management, please press 3.



Language setting please press 3.



Follow the voice prompt to switch language between Chinese and English.



To select English press 2



Succeed

## Dual Authentication Setting

Press “\*#” to verify administrator



Enter administrator password and #



System management, please press 3.



Enable dual authentication, please press 4.



Disable dual authentication please press 1.  
Enable dual authentication please press 2.



Succeed



To enable dual authentication, at least 2 users must be registered. Dual authentication must be password + password/card. Two password shall not be the same one.

#### Initialization Setting

Press “\*#” to verify administrator



Enter administrator password and #



“System management, please press 3.”



Initialization please press 5.



Press # to confirm, press \* to exit.



Succeed

## User Settings

### Add User

Press “\*#” to verify administrator



Enter administrator password and #



“Add user, please press 1.”



“Add administrator, please press 1. Add user, please press 2.”



Press 2, “Please enter password, or card.”



Enter password + # or or card.



“Add an user XXX succeed.”

### Delete User

#### By Number

Press “\*#” to verify administrator



Enter administrator password and #



“Delete user, please press 2.”



“Delete by number please press 1. Identify to delete please press 2.”



Press 1, "Delete password, please press 1, delete card, please press 2."



Delete user by number, please enter the user number, press # to confirm.



Succeed

## Identify To Delete

Press "\*"#" to verify administrator



Enter administrator password and #



"Delete user, please press 2."



"Delete by number please press 1. Identify to delete please press 2."



Press 2, "Identify delete, please press 2."



Identify to delete.



Succeed

## Passageway Setting

Press "\*"#" to verify administrator



Enter administrator password and #



"System management, please press 3."



Door opening function, please press 1.



Enable passageway, mode please press 2. Disable passageway mode, please press 3.



Succeed



When the group meeting or party is held, user could enable the passageway mode for no-authentication access. Any successful access of, password or card will disable passageway function automatically.

#### Volume Setting

Press "\*#" to verify administrator



Enter administrator password and #



"System management, please press 3."



"Volume setting, please press 2."



Follow the voice prompt to adjust the voice volume.



High volume please press 1;  
Medium volume please press 2;  
Low volume please press 3;  
Mute please press 4



Succeed

Installation Video

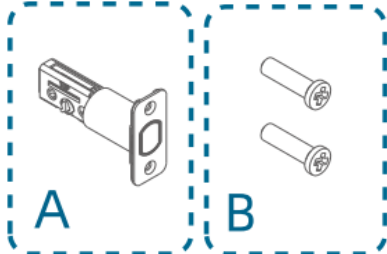


go to <https://www.youtube.com/watch?v=c9bTwVCxG2g>

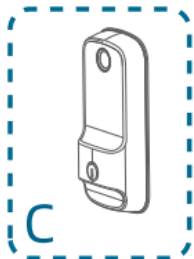
Exterior Assembly

For Smart Lock Installation

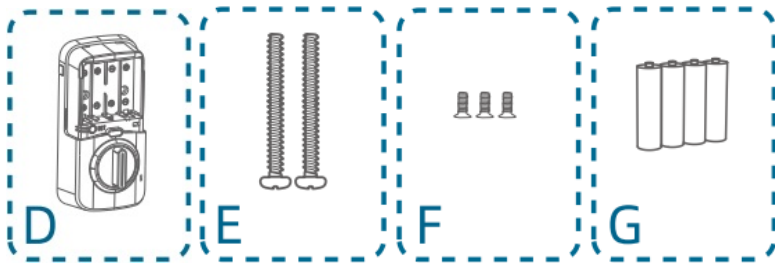
(Step 2) Deadbolt Installation Set



(Step 3) Exterior Assembly



(Step 4) Interior Assembly Installation Set



(Step 5) Strike Plate Installation Set

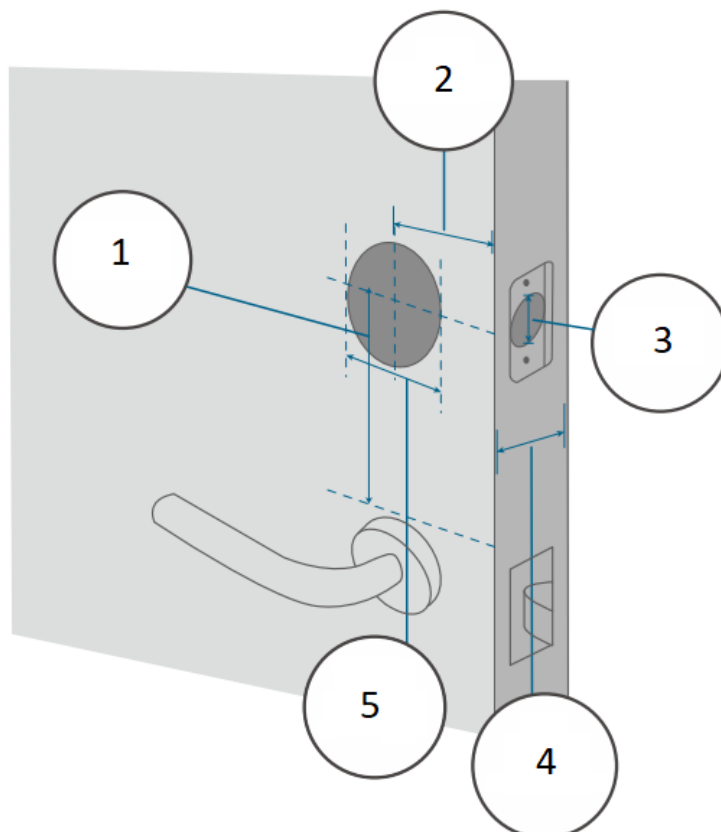
Keys



Exterior Assembly

Step 1. Prepare the Door

1. Remove the existing lock and check your door.
  2. Check if your door has holes like the one below. Standard US doors are already compatible.
- If not, follow the template to drill holes on your door.

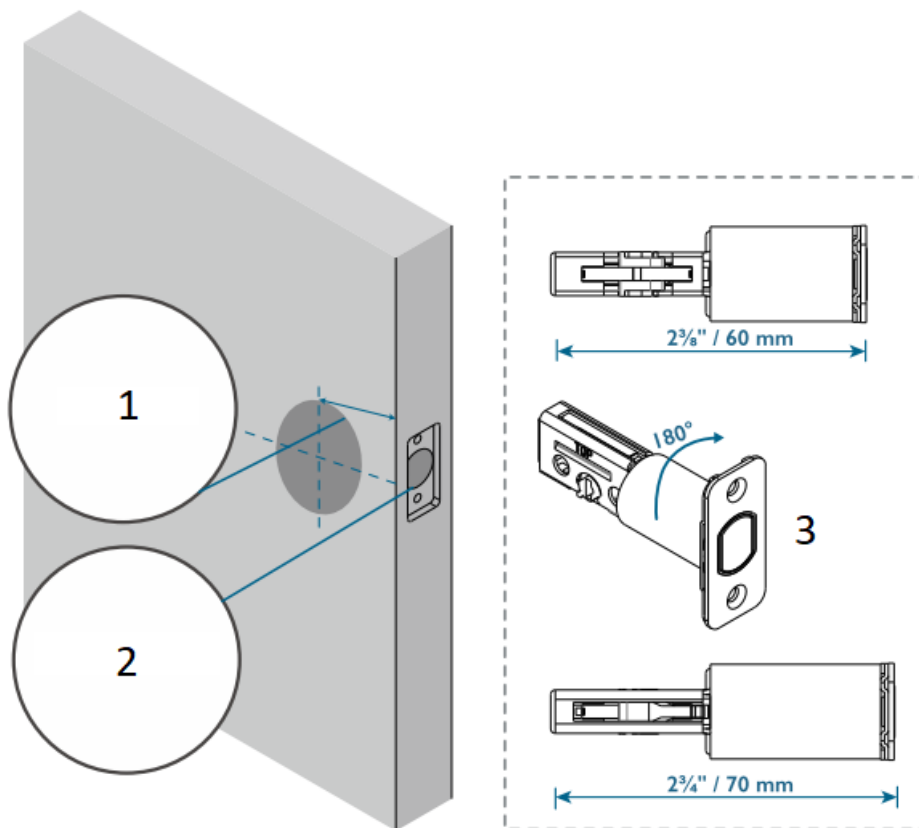


1. Minimum Distance  
2 3/8" / 60 mm
2. Backset  
2 3/8" / 60 mm or 2 3/4" / 70 mm
3. Door Hole Diameter  
1" / 25 mm
4. Door Thickness  
1 3/8" – 2 11/64"  
35 mm – 55mm
5. Cross Bore Diameter  
1 1/2" / 38mm  
2 1/8" / 54mm

## Step 2. Install Deadbolt

---

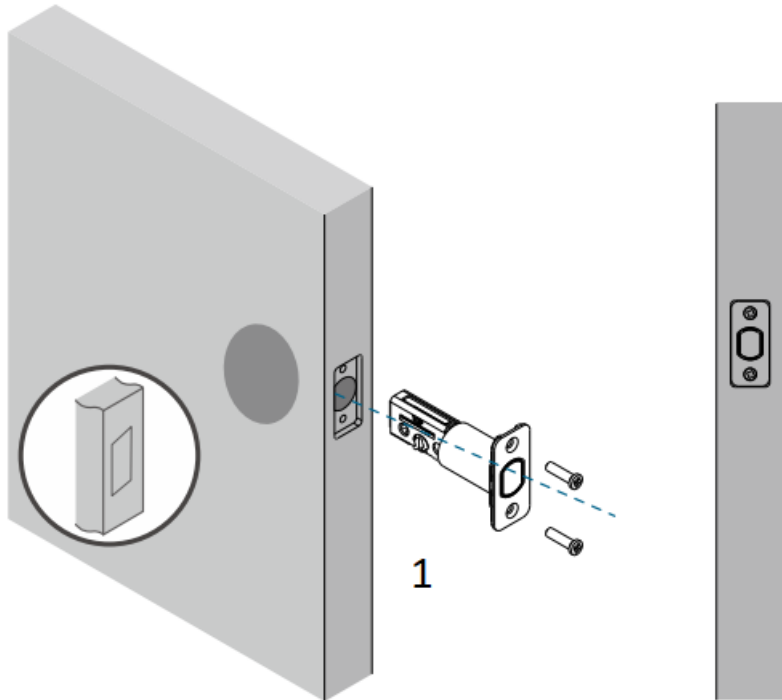
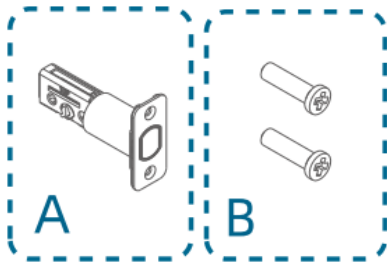
1. Check your door to see if the deadbolt requires adjustment.



1. **Backset**
2. **Latch Hole**
3. **If the backset is 70 mm, turn the faceplate 180° to extend the length.**

2. Insert and screw the deadbolt into the doorframe

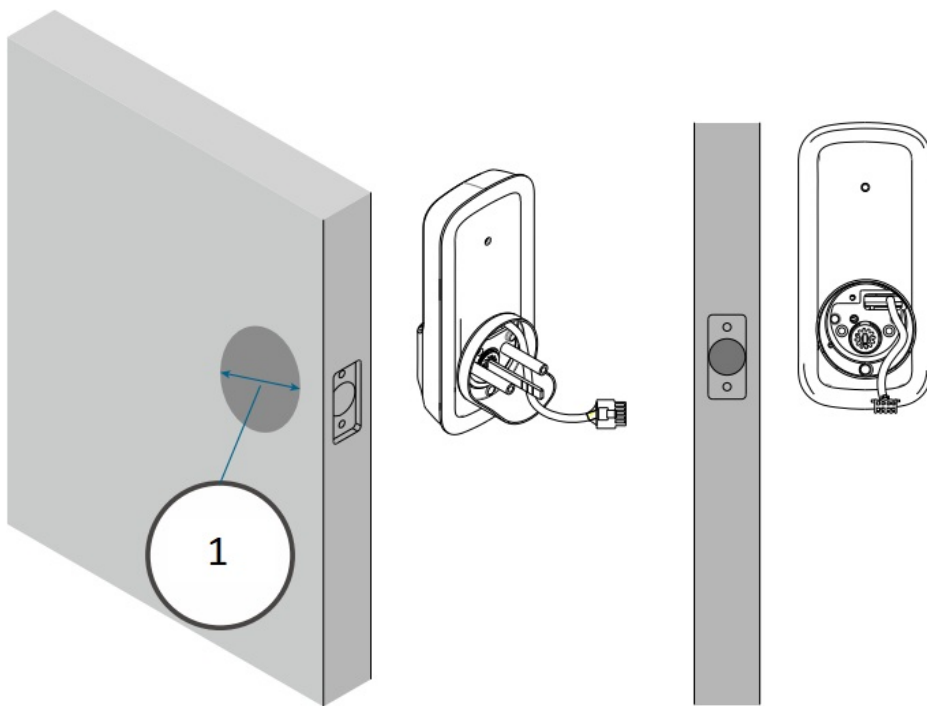




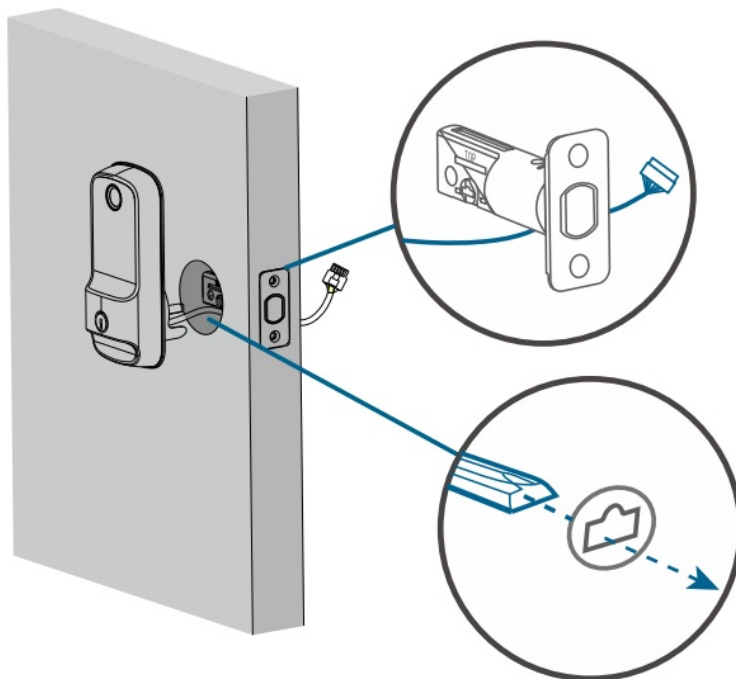
1. **Make sure the word “TOP” on the dead bolt faces up.**

Step 3. Install Exterior Assembly

- 
- Remove the spacer before installation if you have a 38 mm cross bore.

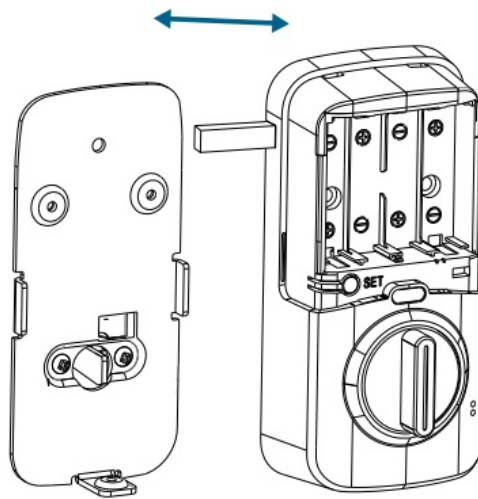


1. Cross Bore Diameter  
1 1/2" / 38 mm

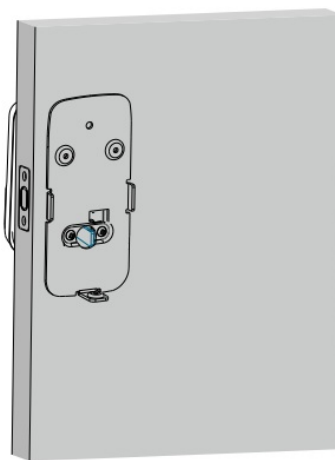


#### Step 4. Install Interior Assembly

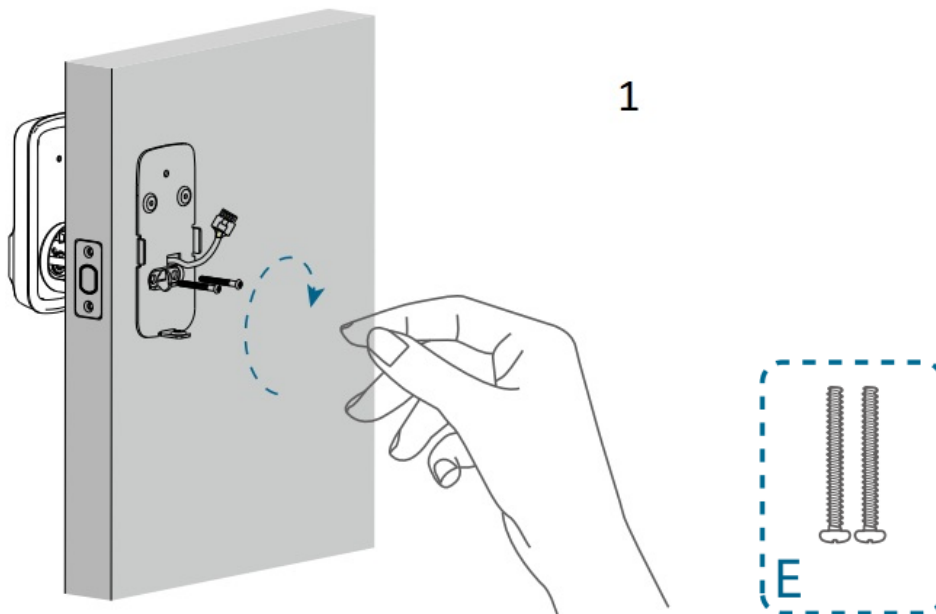
1. Detach the back cover from the interior assembly.



2. Run the wires through the back cover.

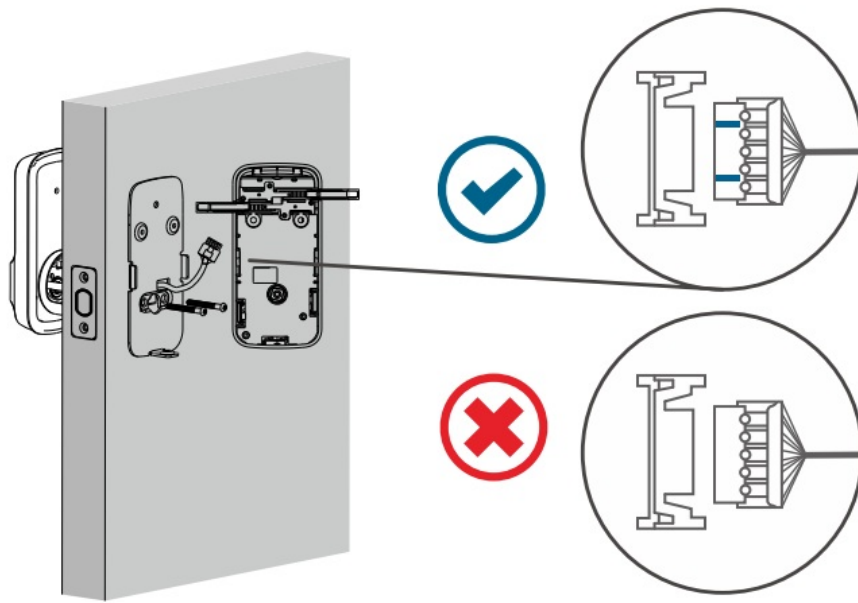


3. Secure the back cover with screws.

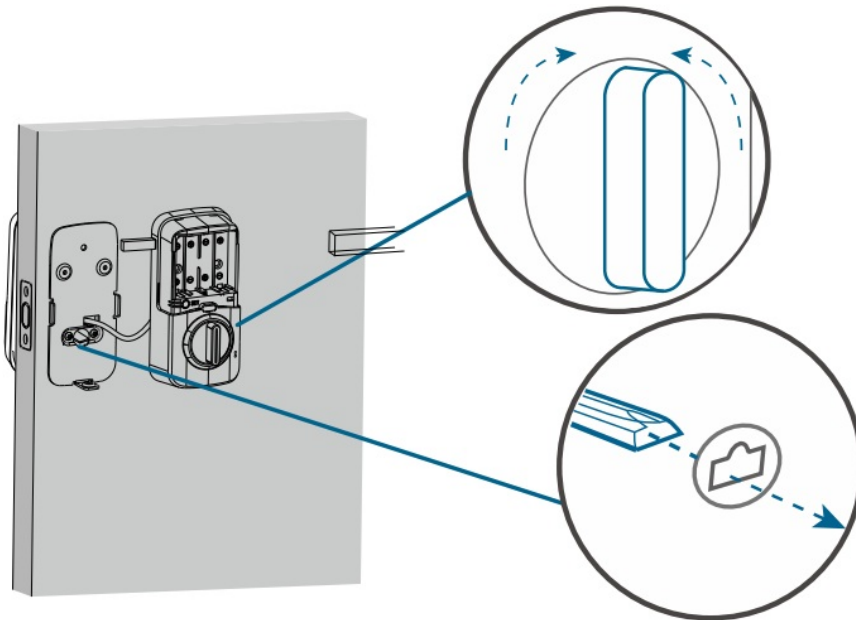


1. **Tightly fasten the screws in place. Set the screws with your hands, then use a screwdriver to secure them.**

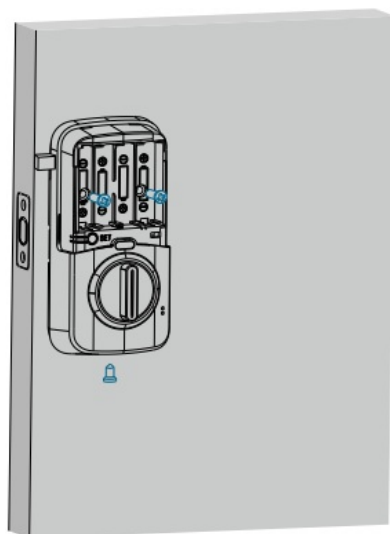
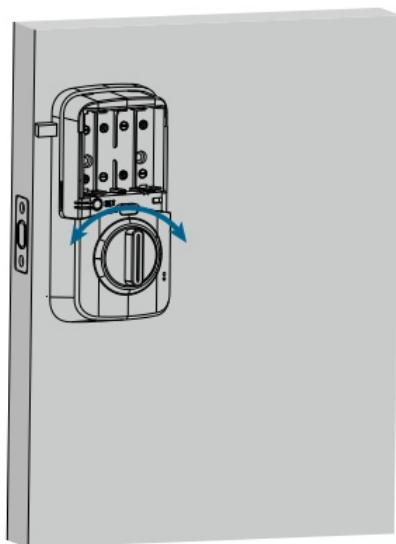
4. Wire to the interior assembly.



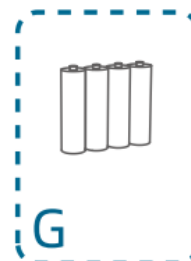
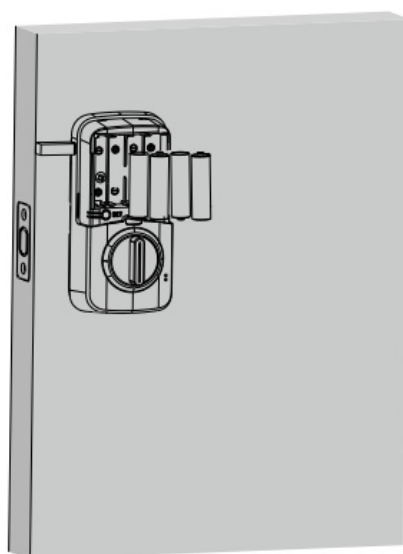
5. Mount the interior assembly. Make sure both wires are tucked into the cabin on the back of the interior assembly.



Make sure the deadbolt is retracted and the thumb turn knob is on the 'unlock' position, check if the deadbolt moves properly by turning the thumb turn.

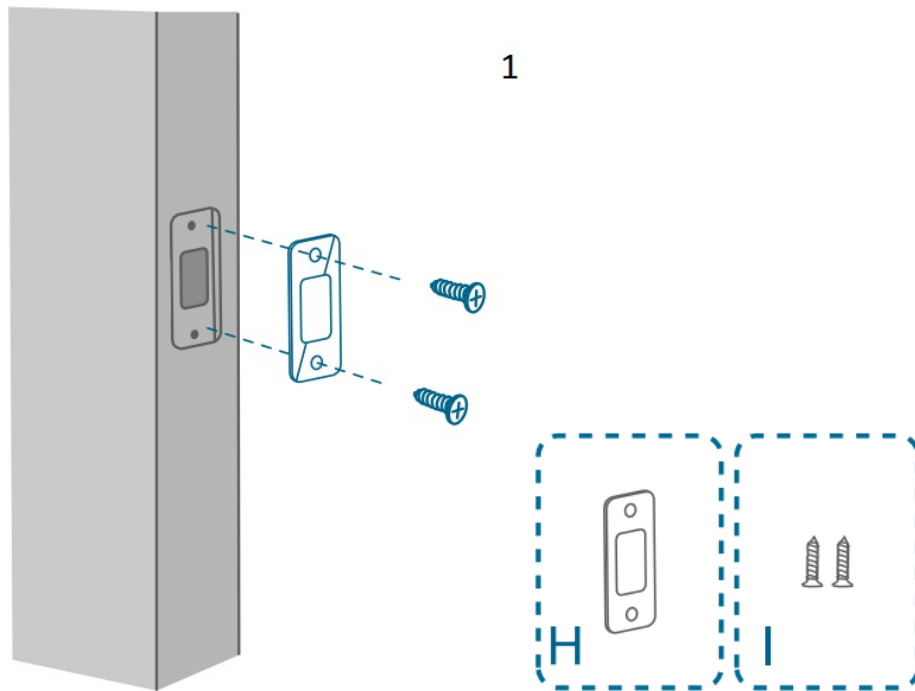


6. Install the 4 AA batteries provided with the correct polarity. Don't put on the cover until the system setup is done in the app.



Step 5. Install Strike Plate

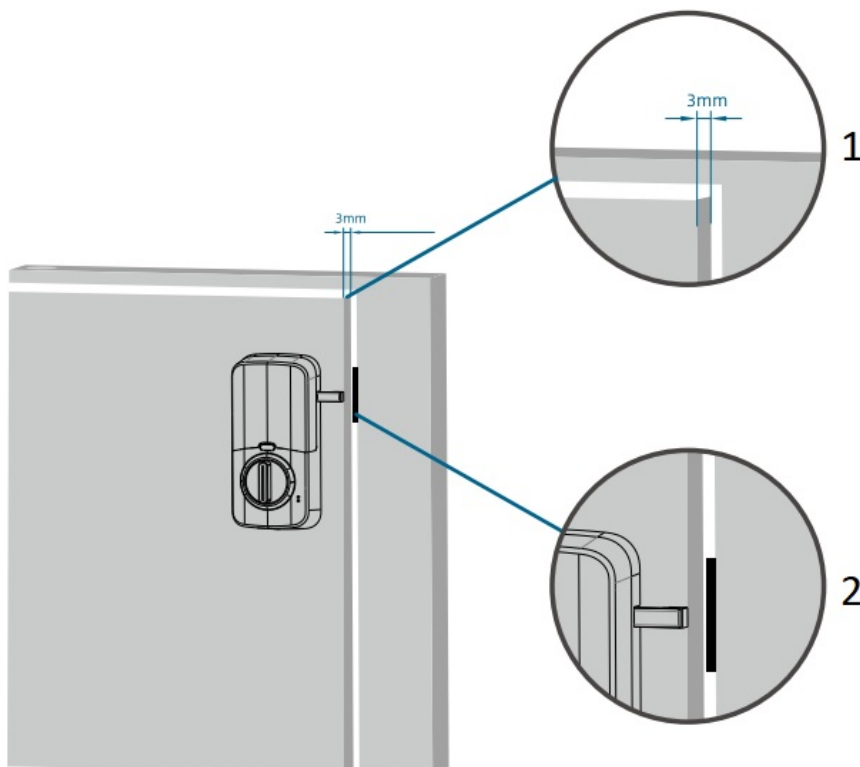
---



1. **Make sure the depth of the latch hole on door frame is deep enough (25.4mm/1"), otherwise the calibration might be failed during the setup.**

Built in door sensor

Find the door magnet with accessory package number 9 and install it onto the door frame. The installation location should be connected to the sensor of the door lock.





1. **The installation method for door magnet when the gap between the door and the door frame exceeds 3mm.**
2. **the door magnet is stuck on the inside of the door frame.**

#### FAQ

**Q:How do I perform the initial setup for the CSLP smart door lock?**

A: To initiate the CSLP smart door lock, please press and hold the reset button for 3 seconds. Then press the “#” button, and the lock will be reset.

**Q:How can I manually lock the lock?**

A: Press and hold # to Lock the smart door lock.

**Q:The batteries died before I could replace them. What can I do?**

A: You can use the keys to open the smart lock or plug in a power bank into the slot on the underside of the keypad to power it up, allowing you to enter and change the batteries.

**Q:Why is my door lock unable to lock?**

A: Please check your door opening direction setting.

#### FCC WARNING



NOTE: This equipment has been tested and found to comply with the limits for a Class digital device, pursuant to Part 15 of the FCC Rules. These limits are designed to provide reasonable protection against harmful interference in a residential installation. This equipment generates, uses and can radiate radio frequency energy and, if not installed and used in accordance with the instructions, may cause harmful interference to radio communications. However, there is no guarantee that interference will not occur in a particular installation.

The device has been evaluated to meet general RF exposure requirement.  
The device can be used in portable exposure condition without restriction.

**Contains FCC ID:2A3P9-402C**

Return and Warranty Information

Return Policy

We offer a 30-day money-back guarantee from the date of purchase. However, some exceptions may apply on a case-by-case basis, and a restocking fee may be charged. In addition, the buyer may be responsible for the cost of return shipping. If you have any inquiries regarding this policy, please contact us at [support@hjmansion.com](mailto:support@hjmansion.com)

#### Product warranty

We offer a one-year free replacement from the date of purchase. To claim your warranty replacement, you must make your first request or inquiry within one year of the date of purchase. Requests or inquiries made after one year from the date of purchase are not eligible for warranty. CSLP reserves the right to reject replacement requests. If you have any inquiries regarding this policy, please contact us at [support@hjmansion.com](mailto:support@hjmansion.com)

#### Customer Service

support is available:  
Mon-Sun 9AM to 5PM PST  
Email: [support@hjmansion.com](mailto:support@hjmansion.com)

#### Features

##### **Multiple Unlocking:**

Password/Card/Key/App Control.

##### **Anti-Peep Dummy Password:**

Up to 20 digits dummy password (right password included).

##### **Battery Power Detection:**

Low battery alert, user can access by password, card."DiDi" alert to remind user replace battery in time. (The lock only works around 7 days under lower battery power supply).

When the battery is dead, No battery alert, user can access by keys only.

##### **Wrong Entry Armed Mode:**

Sound and red light alert with 3 continuous wrong inputs.

System frozen 180 seconds if 5 continuous wrong inputs within 5 minutes.

##### **Emergency Power Supply:**

When the batteries are completely dead, the power bank can be used to power the lock to open. Connect the USB interface with a power bank and enter password +# or card to unlock.

##### **Remote Unlock:**

Unlock by one touch on the APP or voice control through Alexa from anywhere and anytime and a Bluetooth hub is needed.

#### Technical Parameter

Password	Up to 200 ea, 6~12 digits
----------	---------------------------

---

Card	Up to 200 ea
------	--------------

---



Recognition Speed <1S

---

Power Supply 4\*AA alkaline batteries

---

Battery Life 5 months(10 operation of Lock & unlock per day)

---

Rated Voltage DC 6V

---

Emergency Power Supply Micro USB 5V interface

---

Door Thickness 1-3/8" to 2"

---

Backset 2-3/8" or 2-3/4"

---

Operating Temperature -4 to 158°F(-20 to 70°C)

---

Operating Humidity <90%RH

---

---

## Contents

[1 Documents / Resources](#)

[1.1 References](#)

Documents / Resources

<div>CSLP</div> <div>Smart Lock</div> <div>iLock 402C</div>	<div><a href="#">CSLP iLock 402C Smart Lock</a> [pdf] Instruction Manual</div> <div>402C, CSLP, CSLP, CSLP, Fingerprint, Door, Lock, Compatible, with, Alexa, Google, Home, 6-i n-1, Keyless, Entry, Door, Lock, Touch, Screen, Keypad, Deadbolt, Smart, Lock, Works, with, Bl uetooth, B0BZVPDFPF, B0BF52K3SG, B0BF57B1SH, iLock 402C, iLock 402C Smart Lock, S mart Lock, Lock</div>
---	--

References

- [User Manual](#)