



CSI Controls Fusion Three Phase Simplex Instruction Manual

[Home](#) » [CSI Controls](#) » CSI Controls Fusion Three Phase Simplex Instruction Manual 



CSI Controls®

Fusion™

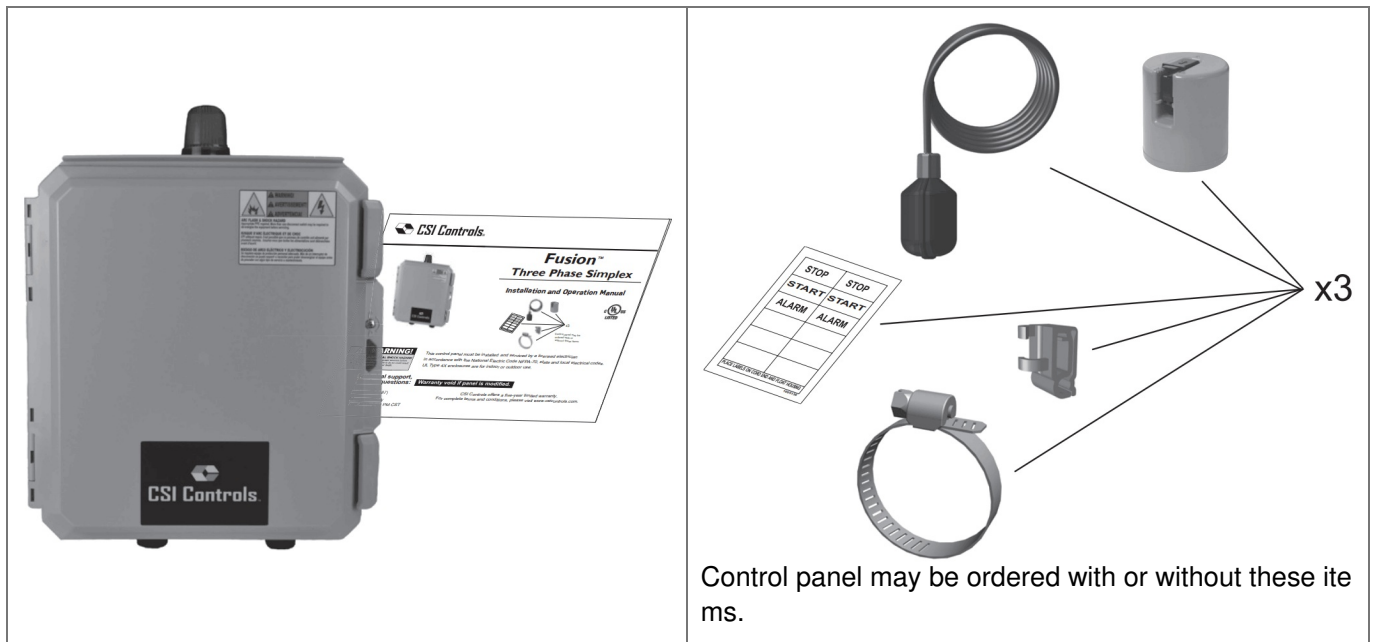
Three Phase Simplex
Installation and Operation Manual



Contents

- 1 Parts Included
- 2 Installing the Float Switches
- 3 Mounting the Control Panel
- 4 Wiring the Control Panel
- 5 Operation
- 6 Documents / Resources
 - 6.1 References
- 7 Related Posts

Parts Included



WARNING!



ELECTRICAL SHOCK HAZARD

Disconnect all power sources before servicing. Failure to do so could result in serious injury or death.

This control panel must be installed and serviced by a licensed electrician in accordance with the National Electric Code NFPA-70, state and local electrical codes.

UL Type 4X enclosures are for indoor or outdoor use.

Warranty void if panel is modified.



For information regarding operation, available options, or servicing questions, please call CSI Controls Technical Support.

CSI Controls offers a five-year limited warranty. For complete terms and conditions, please visit www.csicontrols.com.

Products returned must be cleaned, sanitized, or decontaminated as necessary prior to shipment to ensure that employees will not be exposed to health hazards in handling said material. All applicable laws and regulations shall apply.

Manufactured by: CSI Controls
Technical Support: +1-800-746-6287
techsupport@sjeinc.com
www.csicontrols.com

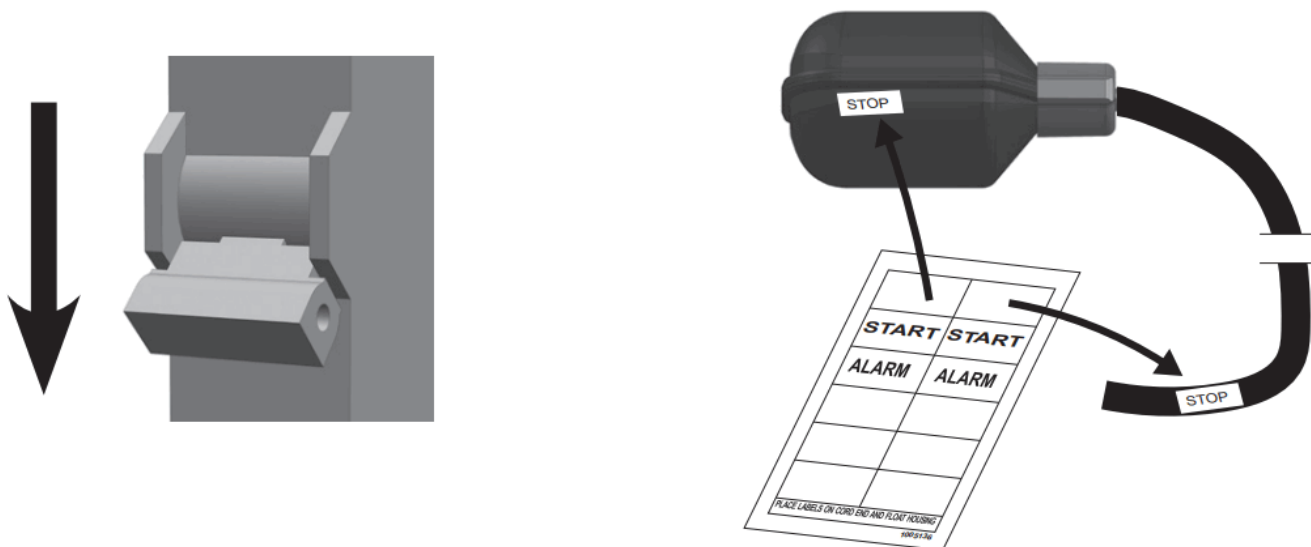
Installing the Float Switches

The Fusion™ Three Phase Simplex control panel operates with 3 float switches to activate pump STOP, pump START, and highlevel ALARM functions.

1. **WARNING**

Ensure all power is turned OFF before installing floats in tank. Failure to do so could result in serious or fatal shock.

2. Label each float and cord end with the provided pairs of STOP, START and ALARM stickers.



3. **CAUTION!**

If the floats are not properly mounted and connected in the correct order, the pumps will not function properly.

Mounting the Control Panel

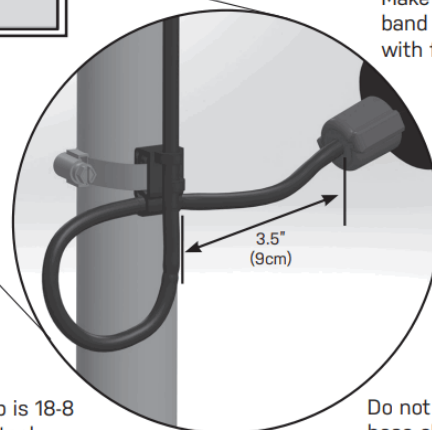
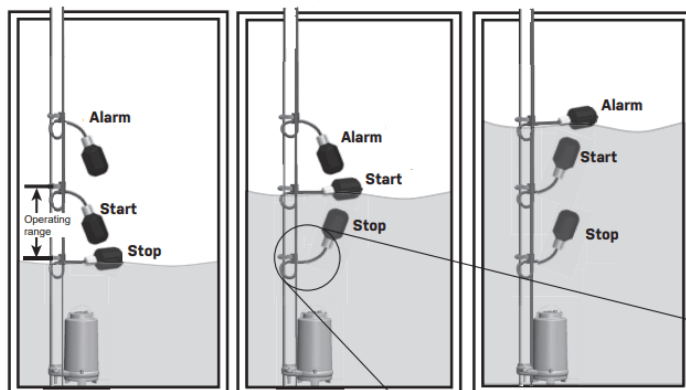
NOTE

If the distance to the control panel exceeds the length of the float switch cords or the pump power cord, splicing in a liquid-tight junction box will be required. For outdoor or wet installation, we recommend a CSI Controls UL Type 4X junction box.



Floats require free range of motion.
 They must not touch each other or any equipment in the pump chamber.

Pipe Clamp Mounting Simplex



Tighten
 the
 clamp.

Hose clamp is 18-8
 stainless steel.

Make sure hose clamp
 band does not interfere
 with float operation.

Do not install cord under
 hose clamp.

Wiring the Control Panel

1. Determine conduit entrance locations on control panel as shown. Check local codes and schematic inside the panel for the number of power circuits required.

CAUTION!

Be sure the pump power voltage and phase are the same as the pump motor being installed.

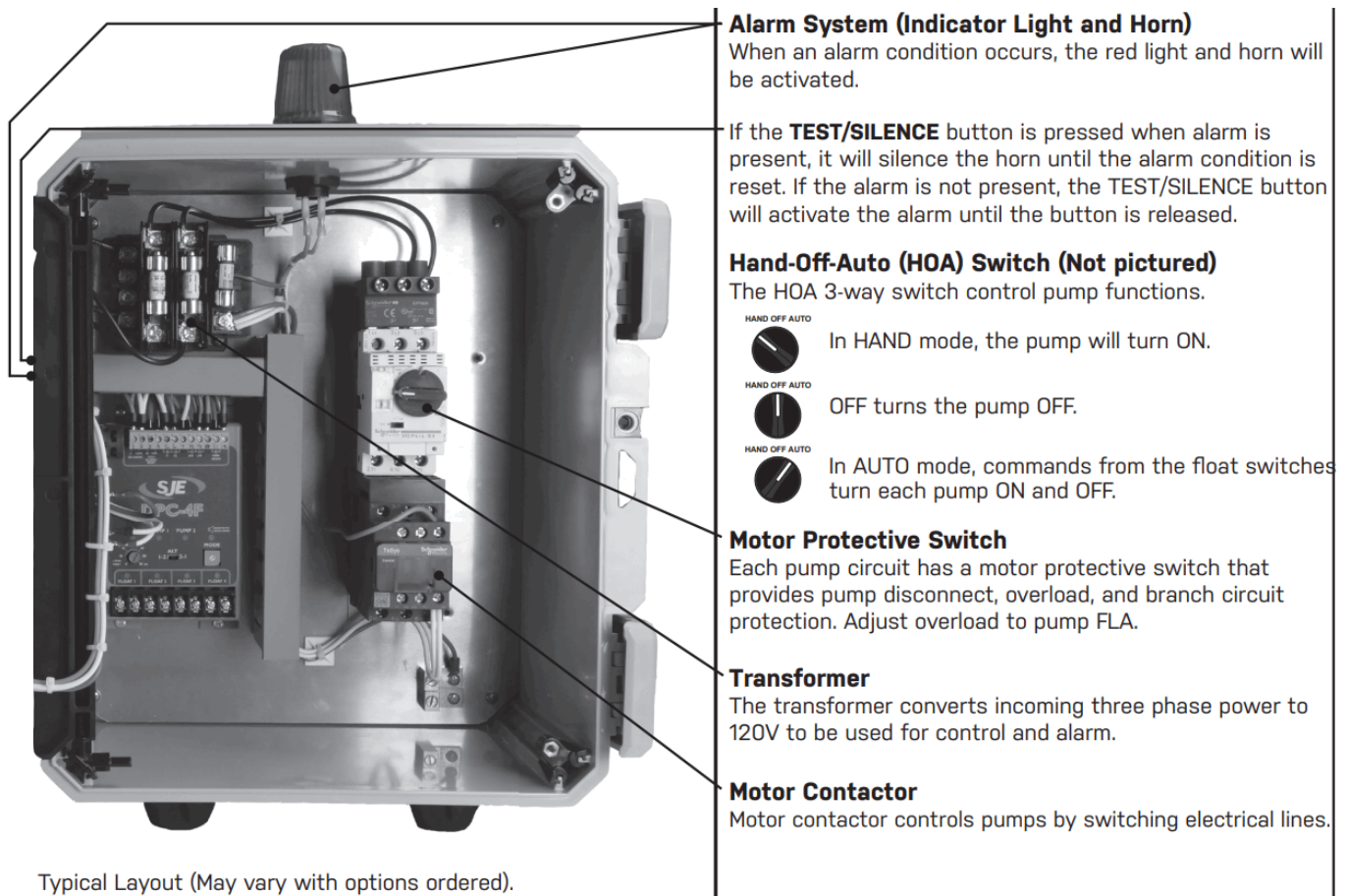
2. Connect the following wires to the proper terminal positions:

- incoming power
- pump
- float switches

See schematic inside control panel for details.

Operation

Fusion™ Three Phase Simplex control panel operates with float switches. When all floats are in the open or OFF position, the panel is inactive. As the liquid level rises and closes the STOP float, the panel remains inactive until the START float closes. At this point the pump will turn ON (if the Hand-Off -Auto switch is in the AUTO mode and the power is ON). The pump will remain ON until both the STOP and START floats return to their OFF positions. If the liquid level rises to reach the ALARM float, the alarm will be activated.



CAUTION!

You must use conduit sealant to prevent moisture or gases from entering the panel.

Type 4X conduit must be used to maintain a Type 4X rating of the control panel.

3. Verify correct operation of control panel after installation is complete.



Technical support, service questions:

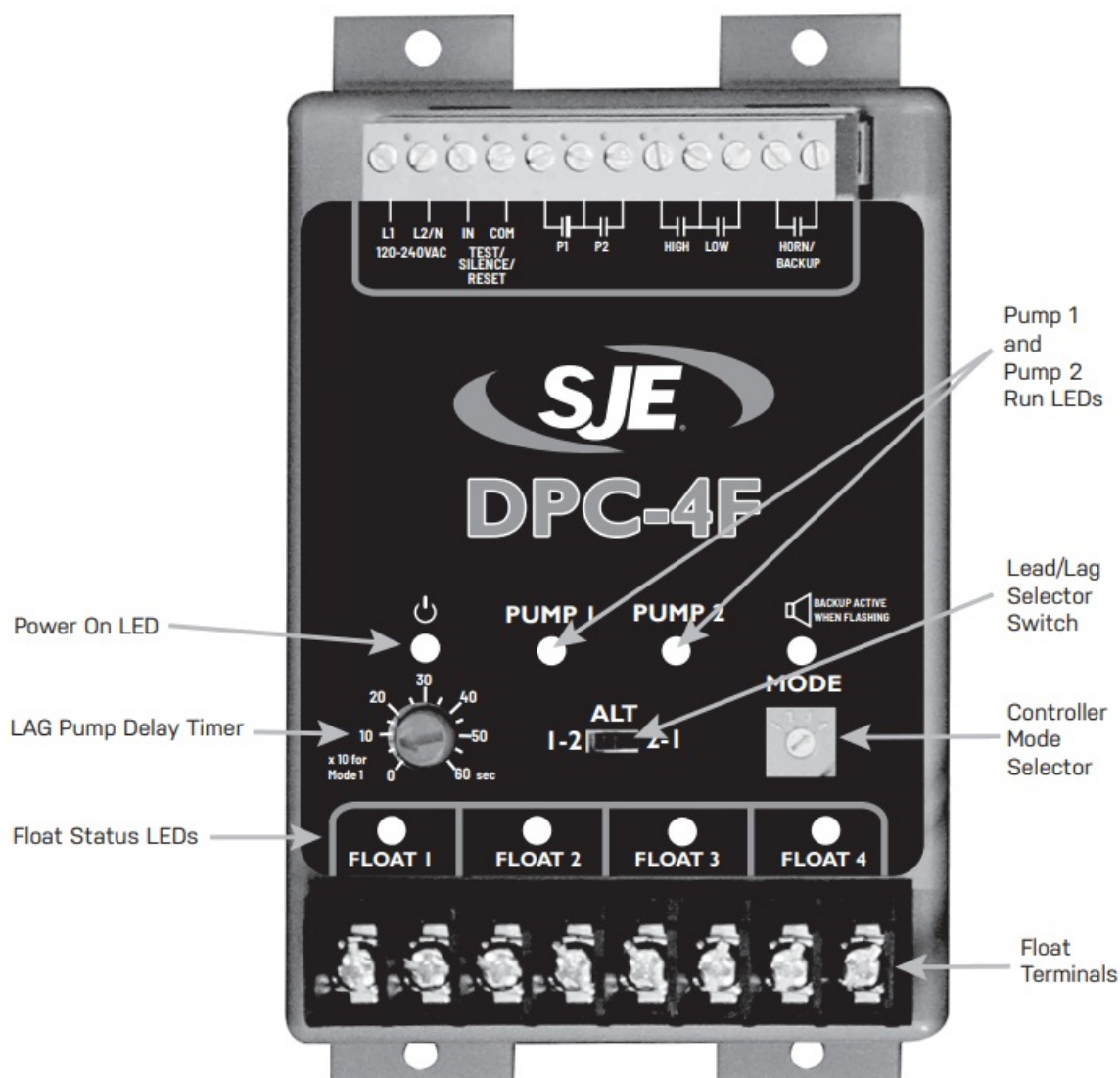
+1-800-746-6287

techsupport@sjeinc.com

Monday – Friday

7:00 AM to 6:00 PM Central Time

DPC-4F PUMP CONTROLLER



MODE 4: Three Float Simplex Operation


Simplex Basic Operation:

Pump turns on when Float 2 closes. Pump turns off when Float 1 opens.

While the DPC-4F controller is designed to operate in duplex applications, it can also be used for simplex applications. In simplex operation, float 3 and pump 2 functions will not be utilized.

Float Out-of-Sequence: If a float closes or opens in the incorrect sequence, the alarm will activate. The Out-of-Sequence fault will clear if the failed float returns to the correct position.

Documents / Resources

	<p>CSI Controls Fusion Three Phase Simplex [pdf] Instruction Manual Fusion Three Phase Simplex, Fusion Simplex, Three Phase Simplex, Simplex</p>
---	--

References

-  [Home - CSI Controls](#)

Manuals+,