

# CSB-802 Resetable Call Point Installation Guide

[Home](#) » [CSB](#) » CSB-802 Resetable Call Point Installation Guide 

## Contents

- [1 CSB-802 Resetable Call Point Installation Guide](#)
- [2 Features](#)
- [3 Optional Design](#)
- [4 Specification](#)
- [5 Wiring Instruction](#)
- [6 Installation](#)
- [7 Documents / Resources](#)
  - [7.1 References](#)
- [8 Related Posts](#)

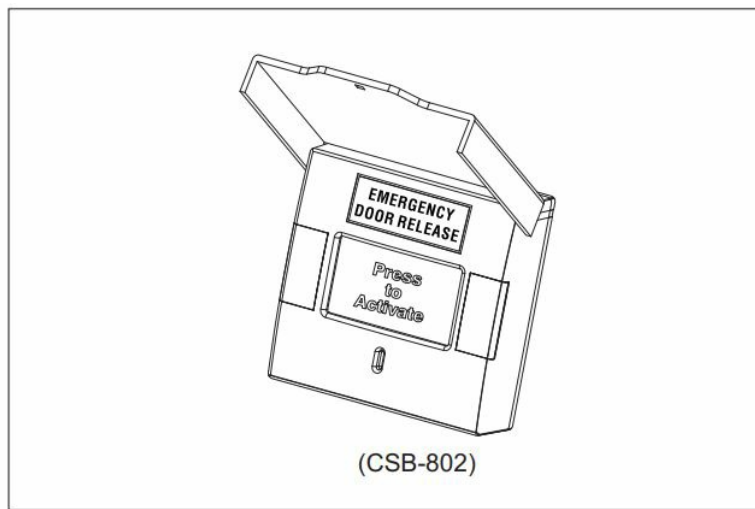
## CSB-802 Resetable Call Point Installation Guide

CSB-802 Resetable Call Point.webp

## Features

1. The housing is available in a variety of colors.
2. Press the pressing plate to enable the contact output function.
3. Resettable design, with a large number of obvious indicators around.
4. Pressing plate is with status shown.
5. With special reset tool, compact appearance, easy to carry and collection.
6. Built-in buzzer status could be set as silent and continuous wailing.
7. Warning light status could be set as continuous flashing and keeping light.
8. Input power range is DC 12-24V, matching the various types of fire alarm system's request.
9. Surface mount without screws and with protect cover.

## Optional Design



## Specification

Item \ Mode	CSB-802	Remark
Power	DC12-24V	±10%
Working current	DC 12V/ ≤30mA(Standby)/ ≤100mA(trigger)	±10%
	DC 24/ ≤30mA(Standby)/ ≤100mA(trigger)	
Buzzer	Set to silent or buzzer continuously	
Indicator light	Default Green, Active Red; Light can be set as continuous flashing or keep lighting	
Output	3NO/3NC/3COM, DC12V/0.5A	
Weight	200g	
Size	91mm*96mm*34.5mm (with cover)	
Material	ABS,PC. (Cover parts)	

### ● Standby

Display status: green

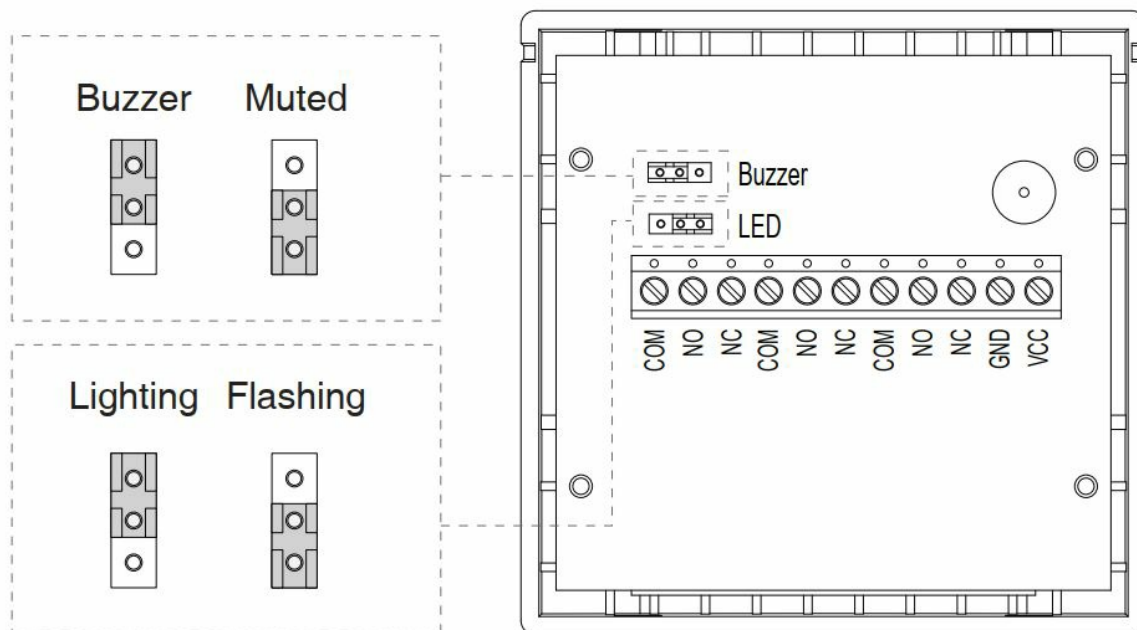


### ● Action

Display status: red

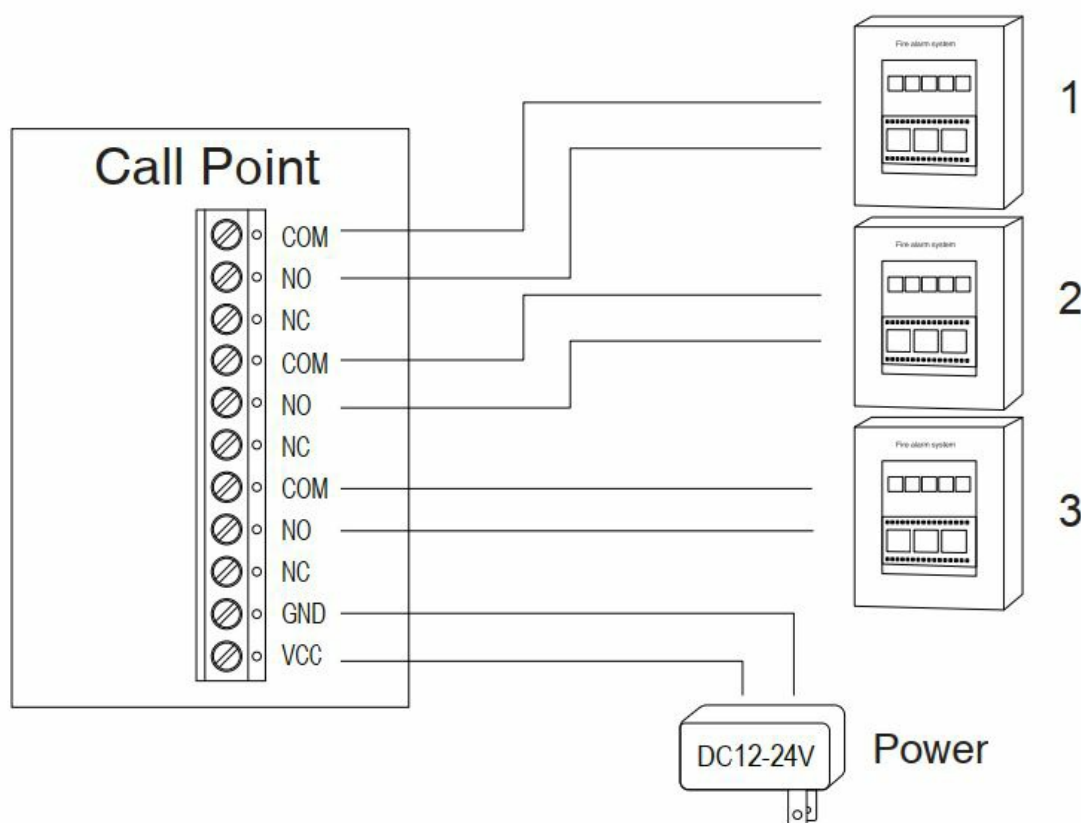


## Wiring Instruction



## Installation

### Fire alarm system



## Installation steps

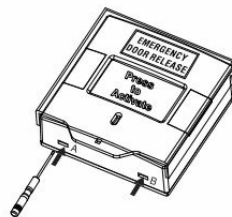
Completed



1

Step 1

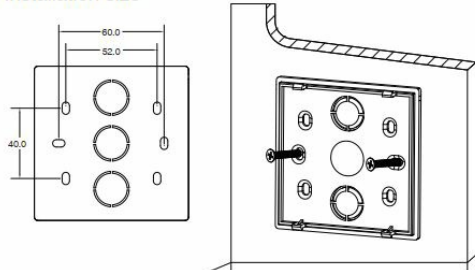
Step 2



During installation, Take off the back box with the reset tool. Insert the reset pole about 1CM at front hole and pry up to open the front case.

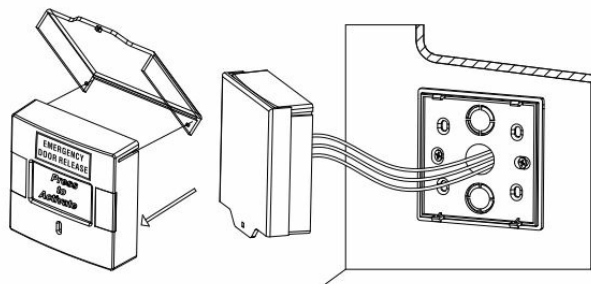
2

Installation size



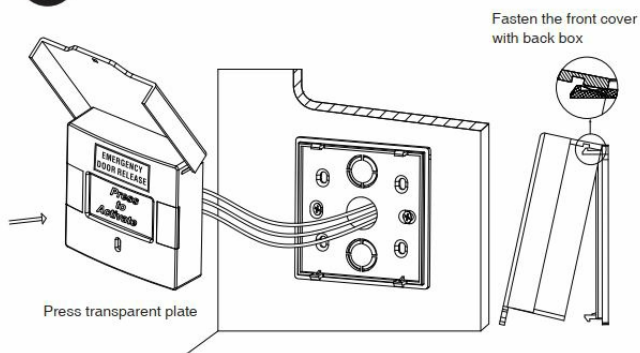
Fixed the back box on the wall.

3



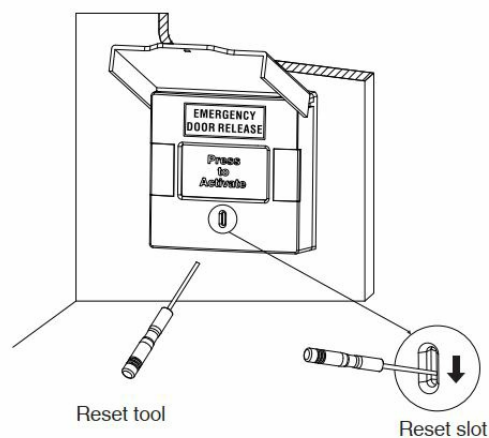
Put the protection cover onto the front case and connect the wire correctly.

4



Fasten the front case on the back box. (Remark: before fasten the front case, you could test the function first. You could press the pressing plate and the buzzer will sound or silent and LED will change the color. LED will keep lighting or flashing base on your jump cap position)

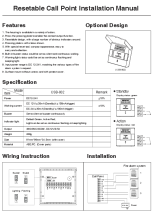
5



Insert the pole and drop down to remove the alarm.

Read More About This Manual & Download PDF:

Documents / Resources



**Resettable Call Point Installation Manual**

**Features**

- Easy to install and use
- No wiring required
- No programming required
- No tools required
- No batteries required
- No programming required
- No wiring required
- No programming required
- No wiring required
- No programming required

**Optional Design**

**Specifications**

Item	CSB-802	CSB-811
Model	CSB-802	CSB-811
Dimensions (H x W x D)	1.5 x 1.5 x 1.5	1.5 x 1.5 x 1.5
Weight	0.1	0.1
Material	ABS	ABS
Color	White	White
Finish	Matte	Matte
Mounting	Surface Mount	Surface Mount
Wiring	None	None
Power	None	None
Range	100 ft	100 ft
Frequency	433.92 MHz	433.92 MHz
Protocol	433.92 MHz	433.92 MHz
Modulation	FSK	FSK
Bandwidth	12.5 kHz	12.5 kHz
Power Output	10 mW	10 mW
Antenna	Internal	Internal
Operating Temp	-40 to 125 °C	-40 to 125 °C
Storage Temp	-40 to 125 °C	-40 to 125 °C
Humidity	5% to 95% RH	5% to 95% RH
Vibration	10g	10g
Shock	10g	10g
Drop	10g	10g
Impact	10g	10g
Corrosion	10g	10g
UV Radiation	10g	10g
Electromagnetic Interference	10g	10g
Electromagnetic Compatibility	10g	10g
Electrostatic Discharge	10g	10g
Radio Frequency Interference	10g	10g
Radio Frequency Compatibility	10g	10g
Radio Frequency Interference	10g	10g
Radio Frequency Compatibility	10g	10g

**Wiring Instructions**

**Installation**

[CSB CSB-802 Resettable Call Point](#) [pdf] Installation Guide

CSB-802, 811, CSB-802 Resettable Call Point, CSB-802, Resettable Call Point, Call Point

References

- [User Manual](#)

[Manuals+](#), [Privacy Policy](#)

This website is an independent publication and is neither affiliated with nor endorsed by any of the trademark owners. The "Bluetooth®" word mark and logos are registered trademarks owned by Bluetooth SIG, Inc. The "Wi-Fi®" word mark and logos are registered trademarks owned by the Wi-Fi Alliance. Any use of these marks on this website does not imply any affiliation with or endorsement.