

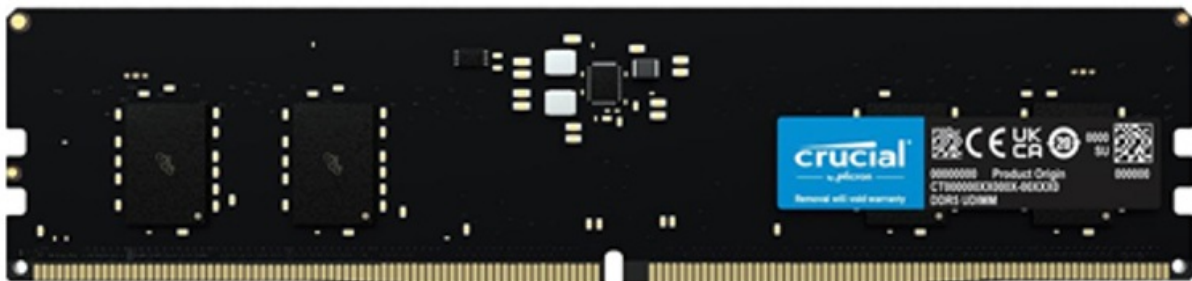


# Crucial DDR5 Desktop Memory Installation Guide

[Home](#) » [crucial](#) » **Crucial DDR5 Desktop Memory Installation Guide** 



## DDR5 Memory Product Installation Content



Adding Crucial DDR5 Desktop Memory to your DDR5-enabled computer or motherboard is an easy process that will help you multitask seamlessly, load, analyze, edit, and render faster — all with higher frame rates, significantly less lag, and optimized power efficiency over DDR4. Installation is quick and easy, and the benefits are instant.

## Contents

- [1 Important pre-installation warning!](#)
- [2 Gather supplies](#)
- [3 Prepare and open your desktop](#)
- [4 Remove existing memory modules](#)
- [5 Install your new DDR5 memory](#)
- [6 Finishing up](#)
- [7 Installation Troubleshooting](#)
- [8 Documents / Resources](#)
  - [8.1 References](#)
- [9 Related Posts](#)

## Important pre-installation warning!

Static electricity can damage the components in your system, including your new Crucial DDR5 Desktop Memory modules. To protect all your system components from static damage during installation, touch any of the unpainted metal surfaces on your computer's frame or wear an anti-static wrist strap before touching or handling any internal components. Either method will safely discharge static electricity that naturally exists in your body. Your shoes and carpeting can also carry static electricity, so we also recommend wearing rubber-soled shoes and installing your memory modules in a space with hard floors. To protect your DDR5 memory, avoid touching the gold pins or components (chips) on the module. It's best to hold it carefully by the top or side edges.

## Upgrade Desktop DDR5 Memory

– 5 easy steps to install memory in a desktop computer

Installing memory can be done in a matter of minutes, but there's no need to feel rushed. Read these instructions thoroughly before you begin, and work at your own pace for best results.

## Gather supplies

Clear off your installation space, making sure you're working in a static-safe environment by removing any plastic bags and papers from your workspace. Then, gather the following items:



- Your DDR5-enabled desktop
- computer or motherboard
- Crucial® DDR5 desktop memory
- Computer owner's manual
- Screwdriver (for some systems)

## Prepare and open your desktop

**NOTE:** Installing DDR5 memory does not affect your files, documents, and data, which are storage on your SSD or HDD. When you install new memory correctly, your data will not be affected or deleted.

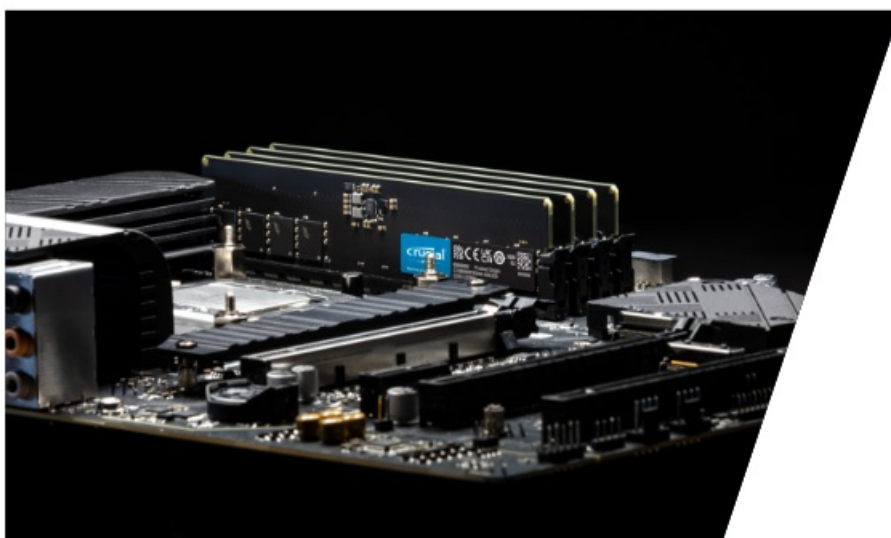
**TIP:** Take pictures as you work through the process to help you remember where cables and screws are attached. This makes it easier and quicker to put your case back together.



- Shut down your computer
- Unplug your computer's power cord
- Remove all other cables and accessories that are plugged into your computer
- Hold down the computer's power button for five seconds to discharge any residual electricity
- For instructions about opening your specific system, consult your computer's owner's manual.

## Remove existing memory modules

**NOTE:** If you're building a new desktop system, you can skip this step.

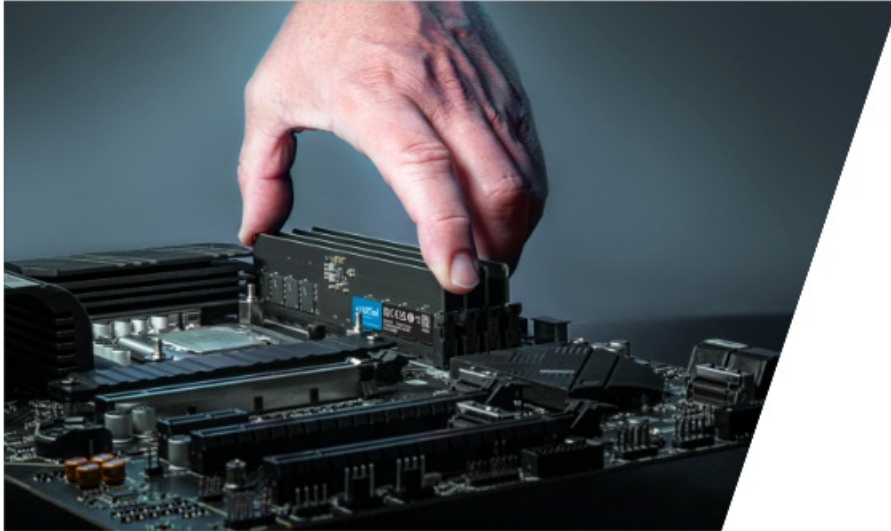


- Don't forget to ground yourself! Now is the time to touch an unpainted metal surface to protect your computer memory and other components from static damage.
- Press down on the clip(s) on the edge of the memory module(s) that are already in your desktop. On some motherboards, you will only be able to engage one of the clips while the other remains static.

- The clip mechanism will push each memory module up so you can pull it completely out of your system.

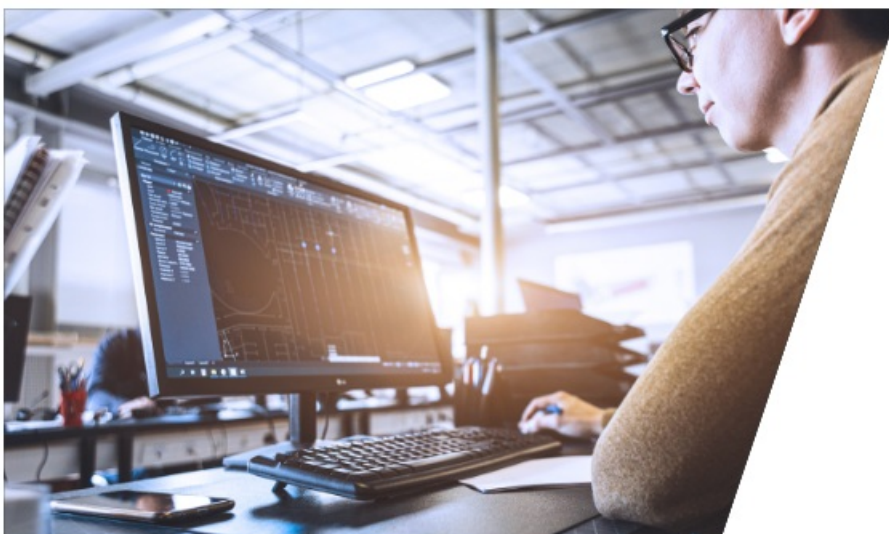
## Install your new DDR5 memory

**NOTE:** Some motherboards require you to install modules in matched pairs (memory banks). Consult your computer's owner's manual to find out if this is true for your system. If it is, each slot should be labeled with a number to show you the correct order in which to install your memory modules.



- Install your DDR5 memory modules one at a time.
- Hold each module along the edges, aligning the notch with the ridge in the slot on your system's motherboard.
- Apply even pressure along the top of the module and firmly press in place. Do NOT attempt to press in place from the sides of the module as this could break the solder joints.
- In most systems, you will hear a satisfying click when the clips on each side of the module re-engage.

## Finishing up



- Close your desktop case and replace the screws, making sure everything is aligned and tightened just as it was before installation.
- Plug your power cable back into your desktop, along with all other cords and cables.

- Your memory is now installed!
- Boot up your desktop and enjoy a more responsive computer that's now better equipped to run memory-intensive apps.

## Installation Troubleshooting

If your system does not boot up, here are some tips that might help:

Improperly installed modules:

If you get an error message or hear a series of beeps, your system might not recognize the new memory modules. Remove and reinstall the memory modules, pushing down with 30 pounds of force until the clips engage on both sides of the module. You will likely hear a click when they are properly installed.

Disconnected cables:

If your system won't boot, check all connections inside your computer. It's not hard to bump a cable during installation, which could dislodge it from its connector. This could result in your hard drive, SSD, or other device being disabled.

Updated configuration needed:

If you get a message prompting you to update your configuration settings, you may need to refer to your owner's manual or your manufacturer's website for information. If you have trouble finding that information, please contact Crucial Customer Service for help.

Mismatched memory message:

If you get a memory mismatch message, it's not necessarily an error. Some systems require you to update system settings after installing new memory. Follow the prompts to enter the Setup menu. Select Save and Exit.

Wrong memory type:

If the groove on your new memory module does not match up to the ridge on your computer's motherboard, do not try to force it into the slot. It's likely you have the wrong type or generation of memory for your system. Memory purchased from Crucial.com after using a tool from the System Compatibility Suite comes with a compatibility guarantee.

Please contact Customer Service for assistance.

System recognizing only half of your memory:

To make sure your computer is registering the new memory you've added, follow these steps:

- Click on Start (the Windows icon)
- Right-click Computer or My Computer
- Select Properties
- You should see Installed Memory (RAM) listed.
- Verify that it matches the amount you installed.

If you are still having issues after trying these tips, please visit our website [www.crucial.com/support/contact](http://www.crucial.com/support/contact) to contact Crucial Customer Service for assistance.

**Enjoy your new Crucial DDR5 desktop memory!**

## Documents / Resources



[Crucial DDR5 Desktop Memory](#) [pdf] Installation Guide  
 DDR5 Desktop Memory, DDR5, Desktop Memory, Memory

## References

- [DRAM, Solid State Drive \(SSD\) & Memory Upgrades | Crucial.com](#)
- [Contact Information | Crucial.com](#)

Manuals+.