



# CRONUS ZEN CM00053C Premier Console Controller Adapter User Guide

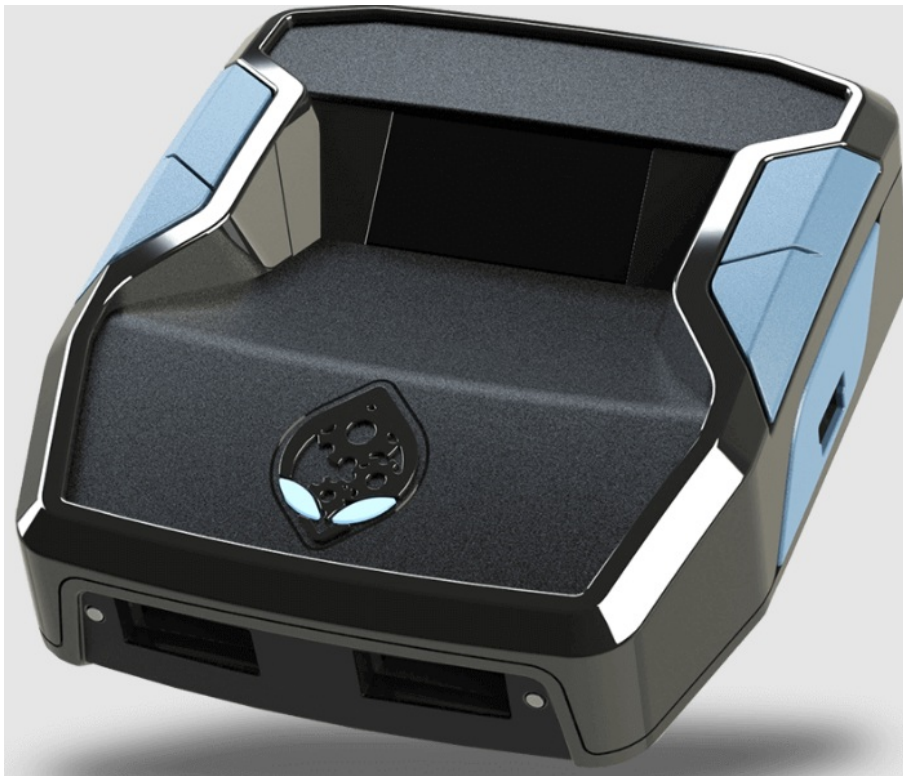
[Home](#) » [CRONUS ZEN](#) » CRONUS ZEN CM00053C Premier Console Controller Adapter User Guide 

## Contents

- [1 CRONUS ZEN CM00053C Premier Console Controller Adapter](#)
- [2 WHAT'S IN THE BOX](#)
  - [2.1 CRONUS ZEN](#)
- [3 GETTING STARTED](#)
  - [3.1 ZEN STUDIO SOFTWARE](#)
- [4 Troubleshooting](#)
  - [4.1 ENABLE SWITCH WIRED COMMUNICATION](#)
- [5 WIRED CONTROLLER SETUP](#)
  - [5.1 MOUSE & KEYBOARD SETUP](#)
  - [5.2 FCC WARNING](#)
- [6 Documents / Resources](#)
  - [6.1 References](#)
- [7 Related Posts](#)

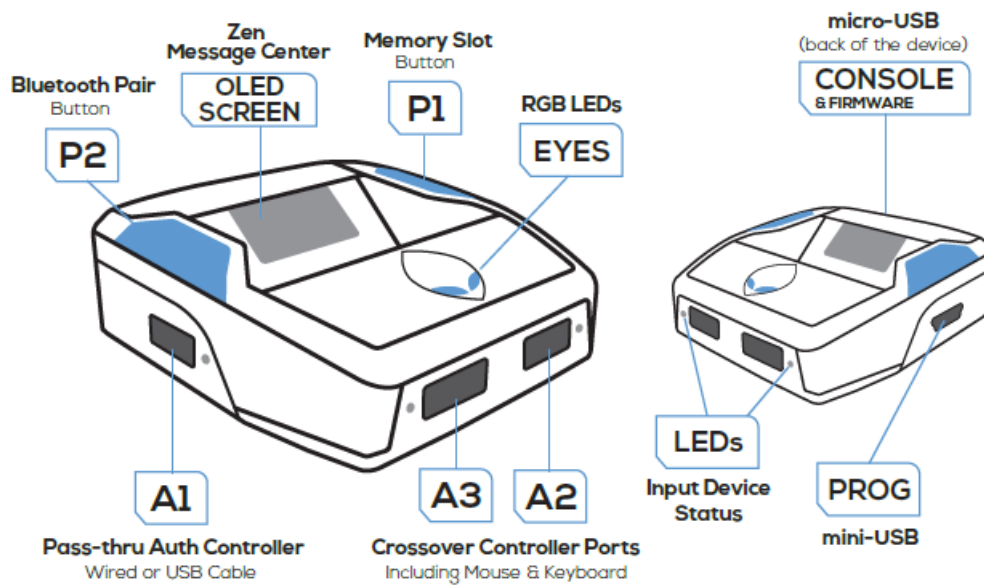


**CRONUS ZEN CM00053C Premier Console Controller Adapter**



## WHAT'S IN THE BOX

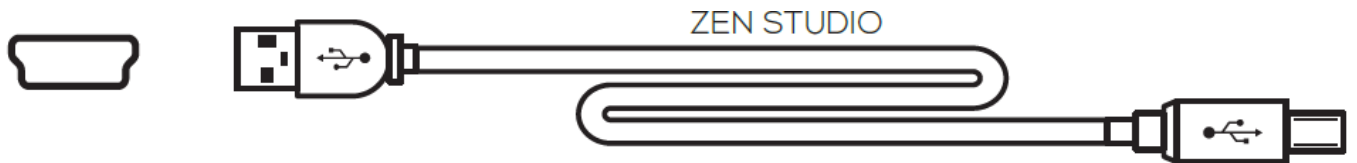
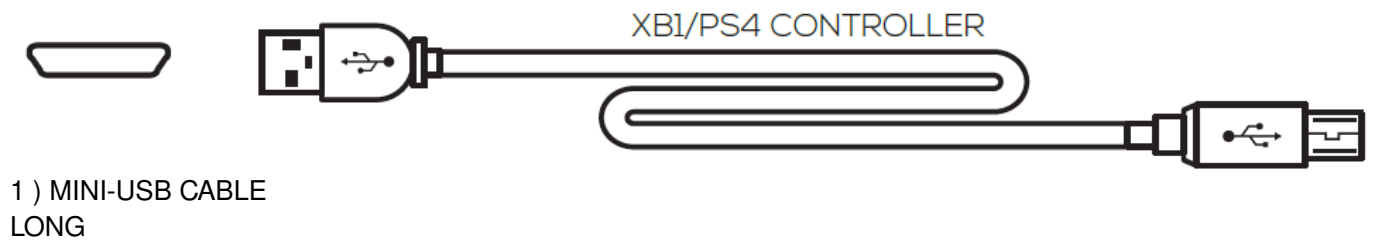
### CRONUS ZEN



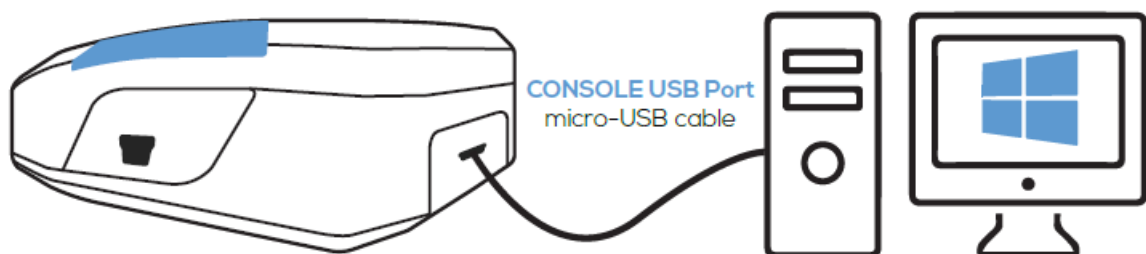
( 1 ) MICRO-USB CABLE  
SHORT



( 1 ) MICRO-USB CABLE  
LONG



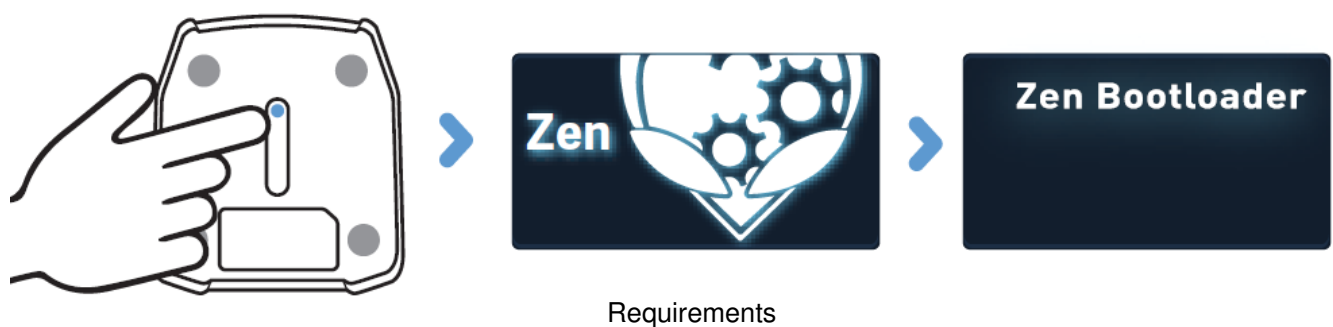
1. Download the Firmware Update Tool & update to the latest version It is important that you complete this step first before anything else.



## 2. Press and hold the Cronus Zen reset button

The OLED screen will display “Zen Bootloader” – you can now use the Firmware Update Tool.

Tip: If you get an E3001 error, hold the reset button down before plugging in the micro-USB cable.

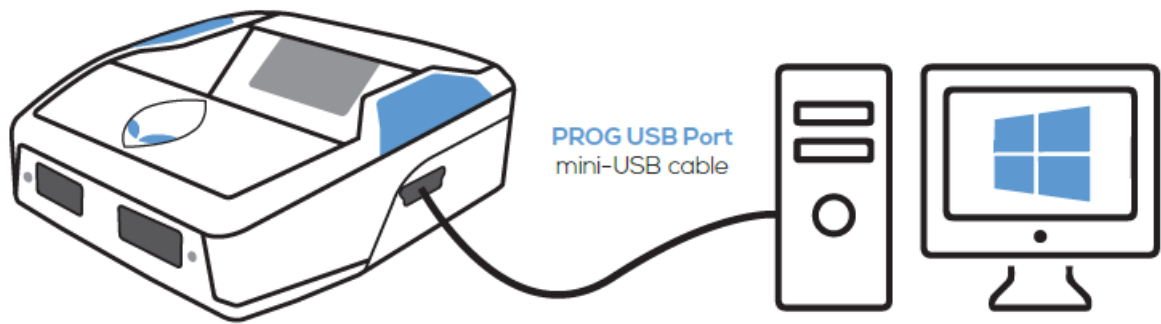


- A wired, licensed controller that matches the console. Wireless controllers can be used with a full data USB cable (long micro USB cable provided).
- **Note:** XBOX 360 console support requires a fully wired X360 controller. The ‘Play and Charge Kit’ for wireless X360 controllers will not work.

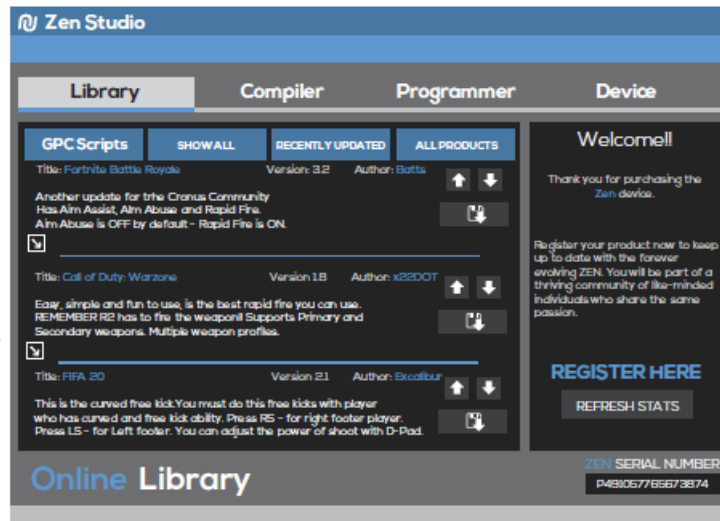
## GETTING STARTED

### ZEN STUDIO SOFTWARE

1. Download & Install the Zen Studio Software for Windows.



**Zen Studio  
Software**



## 2. Register Your Cronus Zen

Click on “REGISTER HERE” and you will be asked to login to your Cronus Community account, or create an account if you don’t yet have one. Get exclusive access to Zen owner areas.

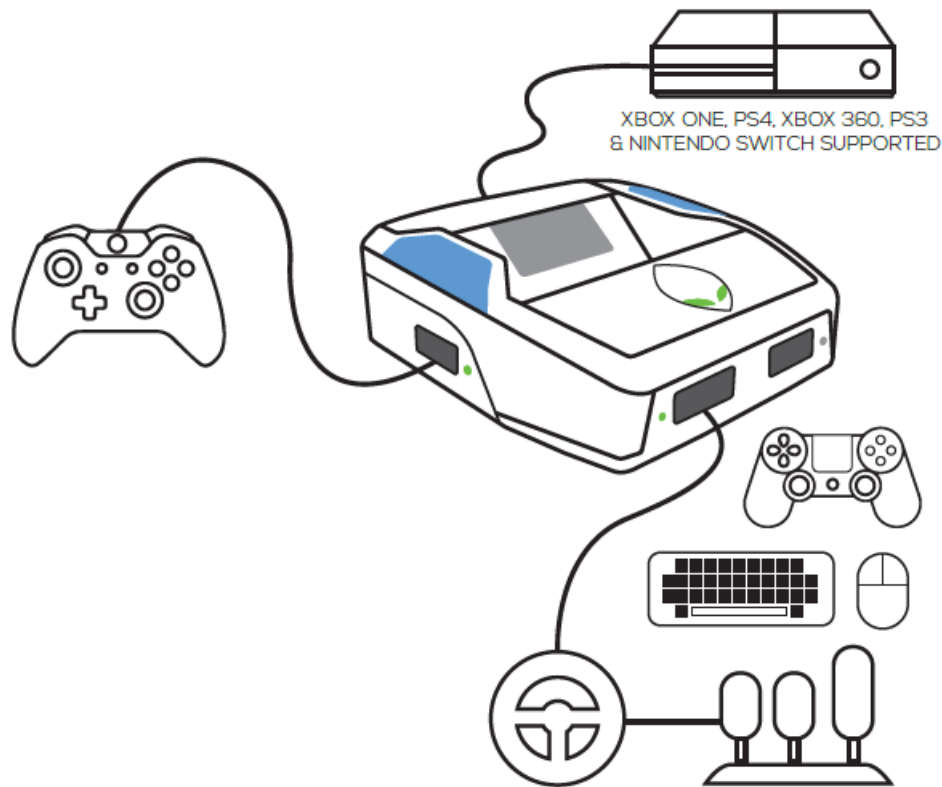
## Troubleshooting

If you experience an error code because of a bad script or old firmware, unplug all cables from the Zen, hold down both the P1 and P2 buttons and then plug in the micro-USB cable to the rear CONSOLE USB port of the Zen. Wait a few seconds and the RGB LEDs will flash RED-GREEN-BLUE and the Collective Minds Gear Head logo will display on the OLED Message screen..

Visit [guide.cronusmax.com/help/](https://guide.cronusmax.com/help/) for more troubleshooting tips

## CONNECT YOUR CONSOLE

Connect the Cronus Zen to your console using the short micro-USB cable provided



### PASS-THRU AUTH CONTROLLER

Connect a wired controller that matches your current console

### CONNECT CROSSOVER CONTROLLER

Connect your desired crossover controller to USB port A2 or A3

All connected status LEDs should be on and the RGB LEDs lit when successfully connected to the console.  
XBOX = GREEN RGB LED, PS = BLUE RGB LED, SWITCH = RED RGB LED

### ENABLE SWITCH WIRED COMMUNICATION

#### Nintendo Switch

System Settings > Controllers & Sensors > Select: Pro Controller Wired Com

### WIRED CONTROLLER SETUP

#### XBOX ONE BLUETOOTH

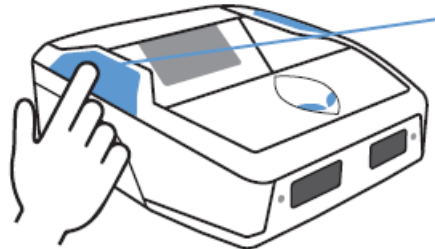


1. Turn on your controller.
2. Hold the SYNC Button on the controller.

#### DUALSHOCK 4



1. Turn off your controller.
2. Hold SHARE + PS until the DS4 Lightbar quickly flashes white.



3. Press the Bluetooth Pairing Button P2 on the Cronus Zen. The Zen RGB LED will flash blue, showing Bluetooth pairing has begun.
4. Within 30 seconds the XBOX Home Button or DS4 Lightbar will stop flashing & stay solid once pairing is complete.
5. Your controller is now paired to the Cronus Zen!

**Note:** Only DUALSHOCK 4 model CUH-ZCT2 supports headsets and the built in speaker.

## OTHER SUPPORTED CONTROLLERS



DUALSHOCK 3



SWITCH PRO



JOY CON



Wii U PRO

Connection instructions for these controllers available at [guide.cronusmax.com](https://guide.cronusmax.com)

## XBOX ONE ALL MODELS



1. Insert the XBOX ONE wireless adapter into USB port A3 of the Cronus Zen (adapter sold separately).

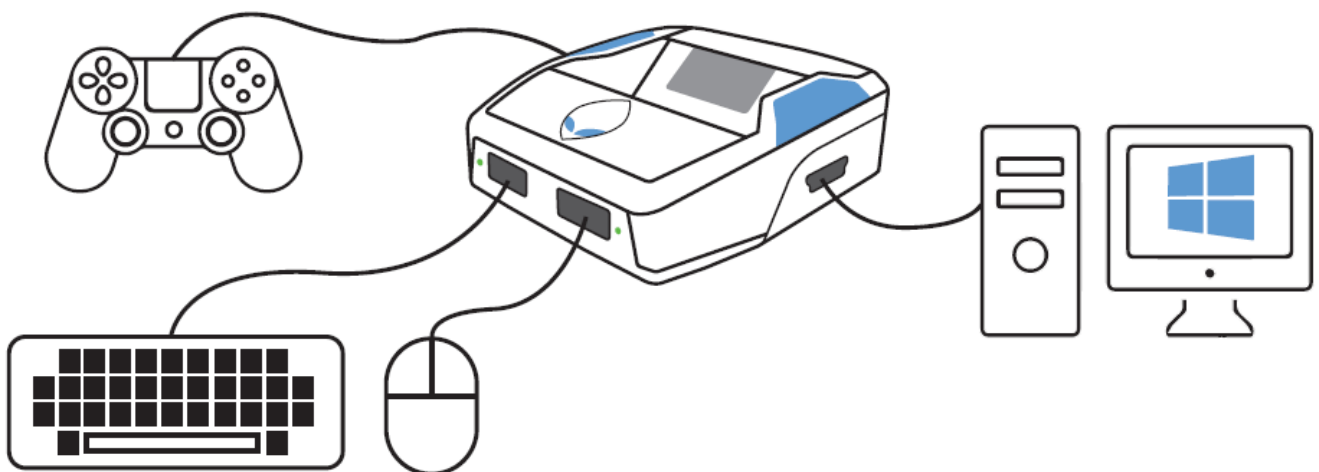
2. Plug the controller into USB Port A2 of the Cronus Zen using the micro-USB cable. It will vibrate to indicate it's connected.
3. Unplug the controller from USB Port A2. The XBOX Home Button will begin to flash.
4. Within a few seconds the wireless adapter's LED will change to white and your controllers XBOX Home Button will stay solid, indicating pairing is complete.
5. Your XBOX One controller is now connected to the Cronus Zen and ready to use. Tip: If the controller is not connected, make sure the the controller is unpaired from the Xbox. Either connect the controller to a PC USB Port (this will reset the pair), or remove the batteries and repeat the above steps.

### **XBOX 360 WIRELESS**



1. Plug the XBOX 360 Wireless Gaming Receiver into USB Port A3 of the Cronus Zen (receiver sold separately).
2. Turn on the XBOX 360 Wireless Controller.
3. Hold the SYNC Button on your controller until the XBOX 360 Guide Button flashes.
4. Press the SYNC Button on the XBOX 360 Wireless Gaming Receiver.
5. Within a few seconds the lights on the Guide Button will stay solid, indicating pairing is complete and your controller is ready to use.

### **MOUSE & KEYBOARD SETUP**

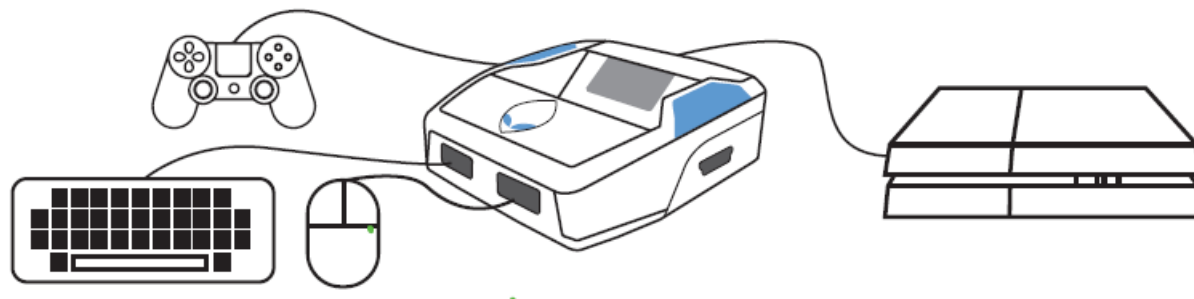


1. Connect the console pass-thru AUTH controller to USB Port A1 of the Cronus Zen.
2. Connect the Mouse and Keyboard to USB Ports A2 and A3 of the Cronus Zen.



**Tip:** You can also use your main computer keyboard to map the keys without connecting it to Zen.

3. Connect the Cronus Zen to your computer using the mini-USB Cable.
4. Open up the Zen Studio Software on your computer & load the M&K Settings Plugin.
5. Configure your Game Profile in M&K Settings and finalize the layout.
6. Unplug the Cronus Zen from your PC and connect it to your console using the micro-USB cable (Remember to connect a keyboard to A2 or A3 if you didn't in Step 2).



See online user guide for compatible devices, in-game settings & advanced instructions

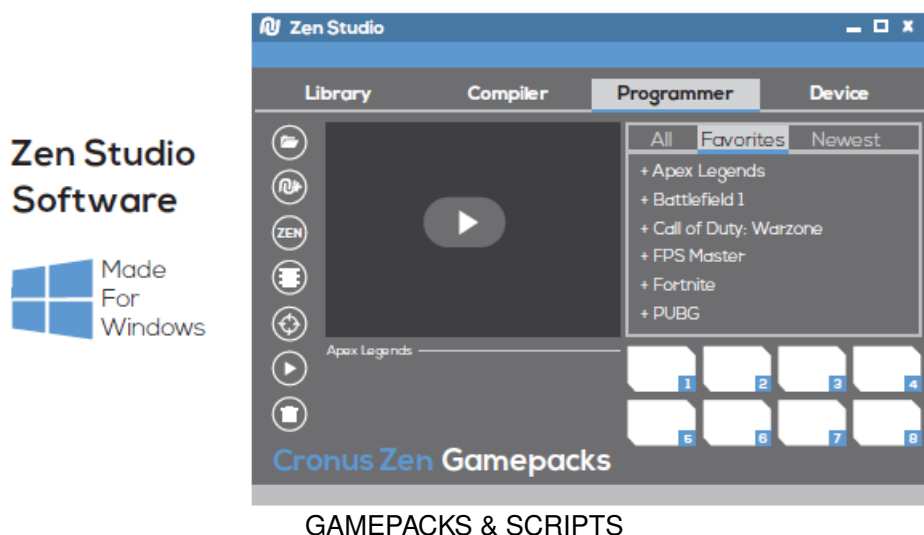
**SCRIPTS:** Thousands of scripts are available in the GPC Script Library or you can write your own and share with the Cronus Community.

#### GO TO ZEN STUDIO > LIBRARY

**GAMEPACKS:** Are pre-compiled mods designed by expert gamers, no scripting knowledge is required – we do all the hard work for you!

#### GO TO ZEN STUDIO > PROGRAMMER

Find Out More: [guide.cronusmax.com/quick-start/gamepacks-and-scripts](https://guide.cronusmax.com/quick-start/gamepacks-and-scripts)



#### FCC WARNING

This device complies with part 15 of the FCC Rules. Operation is subject to the following two conditions:

1. This device may not cause harmful interference, and
2. This device must accept any interference received, including interference that may cause undesired operation.

Any changes or modifications not expressly approved by the party responsible for compliance could void the




user’s authority to operate the equipment. NOTE: This equipment has been tested and found to comply with the limits for a Class B digital device, pursuant to Part 15 of the FCC Rules. These limits are designed to provide reasonable protection against harmful interference in a residential installation. This equipment generates, uses and can radiate radio frequency energy and, if not installed and used in accordance with the instructions, may cause harmful interference to radio communications. However, there is no guarantee that interference will not occur in a particular installation. If this equipment does cause harmful interference to radio or television reception, which can be determined by turning the equipment off and on, the user is encouraged to try to correct the interference by one or more of the following measures:

- Reorient or relocate the receiving antenna.
- Increase the separation between the equipment and receiver.
- Connect the equipment into an outlet on a circuit different from that to which the receiver is connected.
- Consult the dealer or an experienced radio/TV technician for help.





**FCC RF exposure statement:**

The equipment complies with FCC radiation exposure limits set forth for an uncontrolled environment. This equipment should be installed and operated with minimum distance between 20cm the radiator your body.

**Documents / Resources**

	<a href="#">CRONUS ZEN CM00053C Premier Console Controller Adapter</a> [pdf] User Guide CM00053C, 2AEVW-CM00053C, 2AEVWCM00053C, CM00053C Premier Console Controller Adapter, CM00053C, Premier Console Controller Adapter, Console Controller Adapter, Controller Adapter, Adapter
---	--

**References**

-  [Cronus Downloads](#)
-  [Cronus Support Forums](#)
-  [Cronus Zen User Guide - Cronus Zen User Guide](#)
-  [GamePacks and Scripts - Cronus Zen User Guide](#)