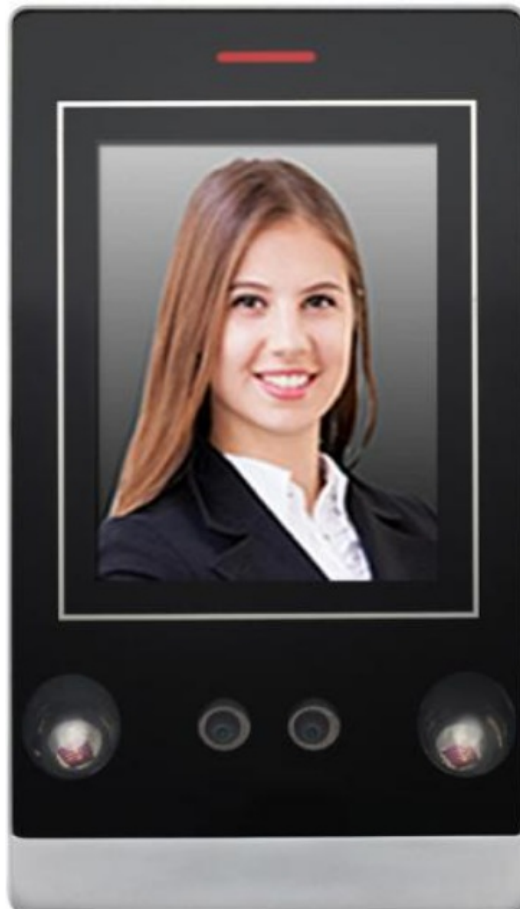




## cronte KI-CF2 Facial Recognition Access Control System User Manual

[Home](#) » [CRONTE](#) » cronte KI-CF2 Facial Recognition Access Control System User Manual 

cronte KI-CF2 Facial Recognition Access Control System User Manual



## Contents

- [1 introduction](#)
- [2 Features](#)
- [3 Technical Specifications](#)
- [4 Installation](#)
- [5 Wiring](#)
- [6 Diagram](#)
- [7 Sound and Light Indication](#)
- [8 Admin Menu](#)
- [9 Admin Card Operation](#)
- [10 User Operation](#)
- [11 Documents / Resources](#)
- [12 Related Posts](#)

## introduction

The product is a new generation of multi-function facial recognition Standalone Access Controller and Reader, which utilizes the new powerful, stable and reliable ARM core 32-bit microprocessor design. It can be used as a Weigand reader, or as a Standalone Access Controller/Reader. And is suitable for access control applications in offices, residential communities, villa, banks and prisons.

## Features

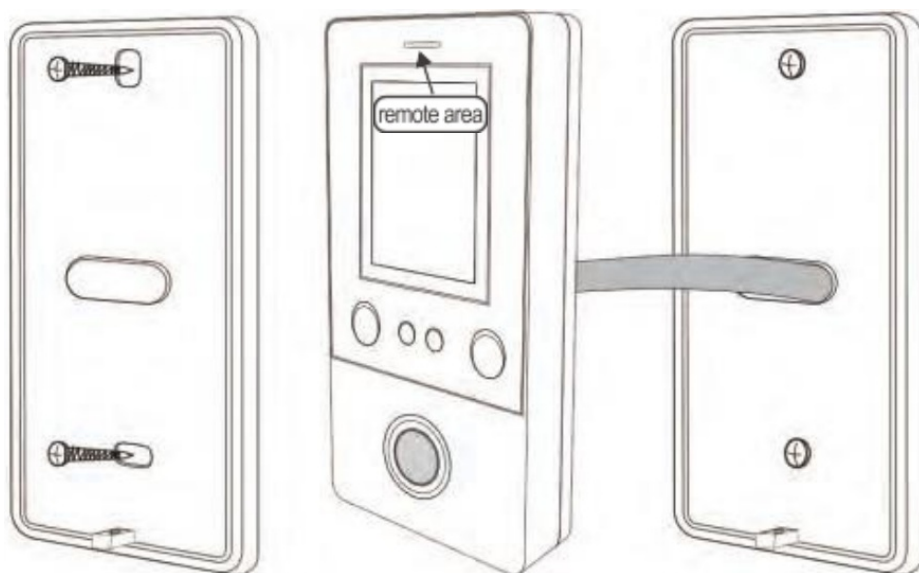
Feature	Specification
Card Type	125KHz EM card{Optional}
	13.56MHz Mifare card (Optional)
Keycard Characteristic	Infra red remote controller operation.
Output Protocol	Can operate as a reader The transmission format could be added by users
Access Mode	card, facial recognition , fingerprint, card + fingerprint, card + facial recognition
Admin Card	admin card , admin fingerprint (add/delete)
User Card	10,000 card users,1000 facial users and 600 fingerprint users
Distance	50cm-1m

## Technical Specifications

<b>Operating Voltage: DC 12V</b>	<b>Standby Current:&lt;180mA</b>
Operating Current: <300mA	Operating Temperature -40 – 60°C
Operating Humidity: 0-95%	Access mode: Fingerprint, card, facial recognition or

## Installation

- Remove the back cover from the keypad using the supplied special screw driver
- Drill 2 holes on the wall for the self-tapping screws and dig a hole for the cable
- Put the supplied rubber bungs into the two holes
- Fix the back cover firmly on the wall with 2 self tapping screws
- Thread the cable through the cable hole
- Attach the keypad to the back cover. (See the figure below)

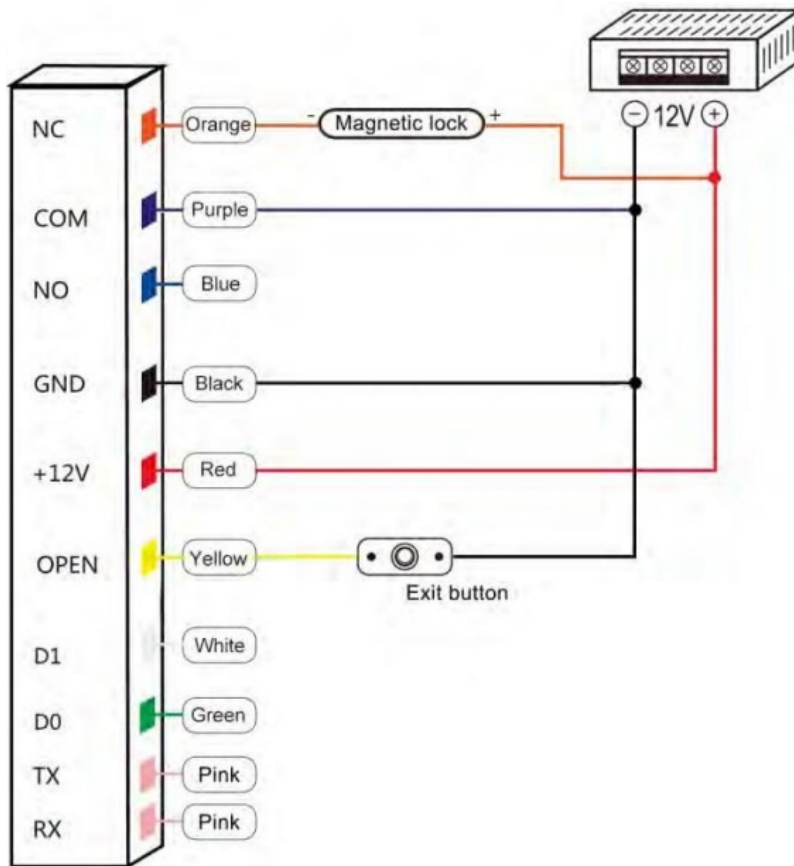


## Wiring

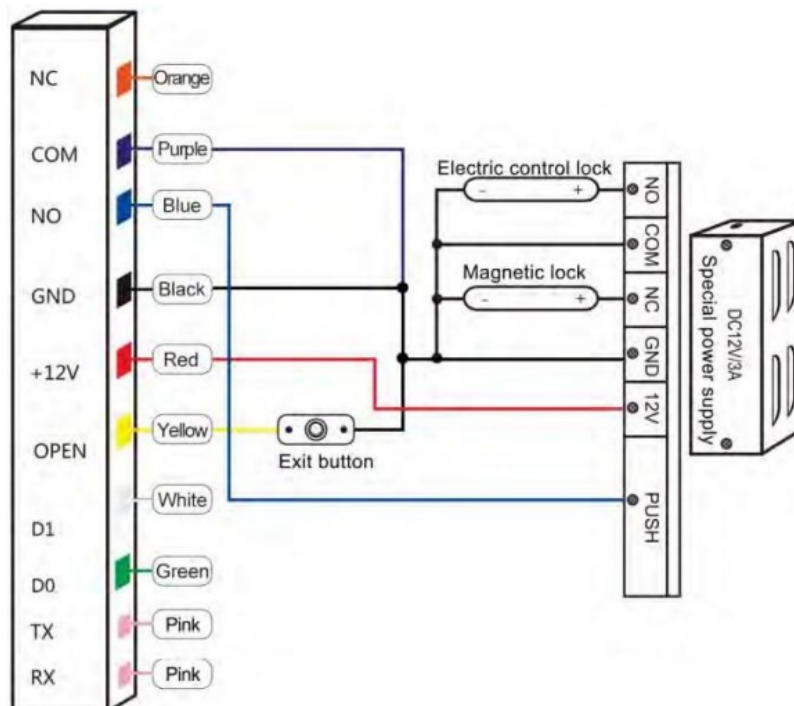
No-	Color	Marks	Description
1	Orange	NC	Relay NC
2	Purple	CO/VI	Relay GOM
4	Blue	No	Relay NO
6	Black	GND	Negative power supply end
7	Red	+12V	Positive power supply or AC power supply end
B	Yellow	OPEN	Exit button input end
9	Green	D1	Wiegand input (any when used as a reader)
10	White	D0	Wiegand input (only when used as a reader)

## Diagram

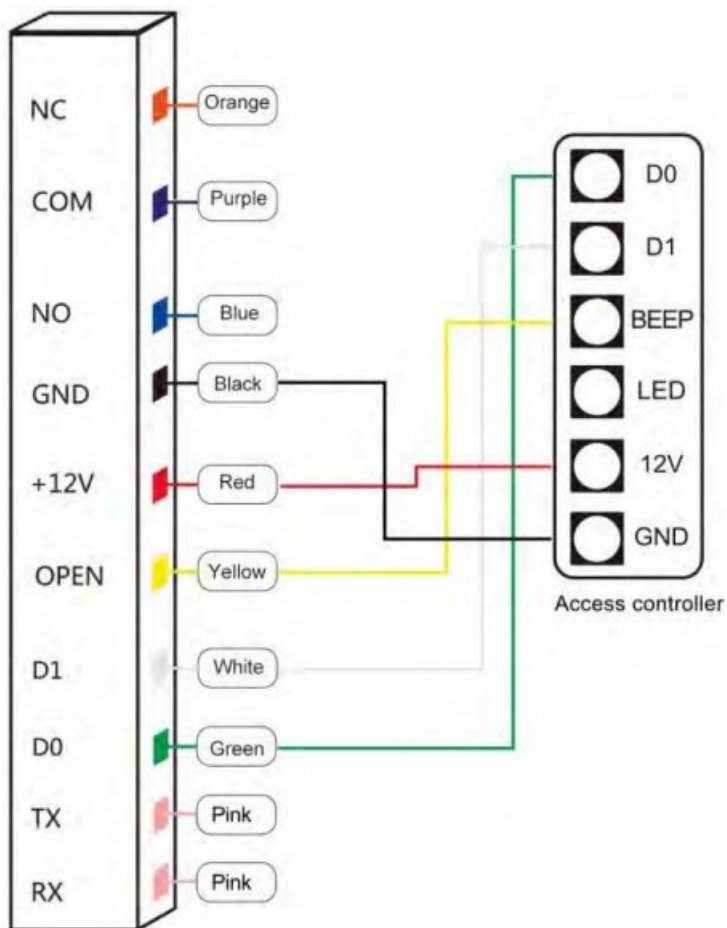
## Common Power Supply



## Special Power supply



## Reader Mode



## Sound and Light Indication

Operation Status	Light indicator	Buzzer
Stand by	Red	
Operation successful	Green	Beep
Operation failed		Beep-Beep-Beep
Admin card enter programming		Beep
Admin card exit programming		Beep
Press digital key		Beep
Press* key		Beep in
Read card under card+finger mode	Red indicator flash slowly	Beep—
Read mM under card+Mca mode		Beep—
Head mult user cards	Red indicator flash slowly	Beep
Enter programming mode	Red indicator flash slowly	
Enter setting status	Orange	
Unlocking	Green	
Buzzer alarm	Red indicator flash quickly	Alarm

## Admin Menu

### Device Management

Function	wpera»On steps			Notes
Change Admin Gode	_____			Factory Default Adminade is 999999. This is the code when you reset default
SetAdminAdd oard orfln er nm				To set Admin Add card or fingerprint
Set Admin delete card or fingerprint			R ^	To sel Admin Delete
Delete Admin Add card or fingerprint				Delete Admin Add card or fingerprint
Delete Admin Delete card or finperprin				Delete admin delete card or fingerprint
Exit programming				Press to exit programming

### Common Operation

Function	Operation steps	Notea
<b>Change admin code</b>	<u>axee</u> <u>e</u>	Uetault Admin œde is 999990.
Add carô user	_____	<b>Add multiple card users</b>
Add tace user	<u>aôa</u> <u>n</u>	<b>8 faces per user</b>
<b>Add fingerprint</b>		Add multip e fingerprint! use
Delete card user	_____	Delete card user
Delete face user	_____	<b>Delete multiple face users</b>
<b>Delete fingerprint</b>		e multiple fingerpnnt
Ueete al user	m  ^ min c° e mfi  w00 0	Delete all card users, faces and fingerprint

### Add users

Function	Operation steps	Notes
Add card user	_____	Add multiple card user
Add card number	<u>Admin code due is</u> ..@	generally automatically (1-9999)
Add user ID number	_____	number and reading card
Add user ID number +	_____ <u>ID number</u>  @	Add card user by specifying User ID number and input
Add face user		default is 8 users
Add face user by specifying ID number	<u>Admin code</u>   <u>ID number facial recognition 8 times</u> @	Add multiple face user by specifying user ID number
Add fingerprint user		Add multiple fingerprint user

## Delete Users

Function	Operation steps	Notes
Delete card user	_____i... @x	Delete card user
Delete card number		Delete card user by card number
Delete ID number	<u>Admin code</u>   <u>ID number</u>	Delete card fingerprint face user by specifying ID number
Delete face	<u>Admin code</u>  @   <u>Facial recognition once</u>	Delete face user
Delete fingerprint		Delete fingerprint user
Delete multiple users	Qt _____%%	Delete multiple users by ID number
Delete all user	_____née 0000 @	Delete all user cards, faces

## Admin Card Operation

## Add Card

Read admin add card  
Read the 1' user card  
Read the 21" user card  
Read admin add card

**Note:** The Admin Add card is used to add card users continuously and quickly. When you present the Admin Add card, you will hear short "BEEP" sounds twice and the indicator light turns orange. You have entered into Add user programming mode. You can present the cards for programming now. After all the cards are added, present the Admin Add card again. You will hear long "BEEP" sound once and the indicator light turns red, indicating that you have exited the Add card user programming mode.

## Delete Card

Read admin delete card  
Read the 1' user card  
Read the 21d user card  
Read admin delete card

**Note:** The Admin Delete card is used to delete card users continuously and quickly. When you present the Admin Delete card, you will hear short "BEEP" sounds twice and the indicator light turns orange. You have entered into Delete user programming mode. You can now present the cards for deletion. When it is completed, you can present the Admin Delete card and you will hear a long "BEEP" sound once and the indicator light turns red, indicating that you have exited the Delete card user programming mode.

## User Operation

### Acknowledging the Alarm

Read admin card,  
or  
Read valid user card'  
or  
Input valid fingerprint,  
or  
Press Admin code #1

**Note:** When the alarm is activated, users can acknowledge and stop the alarm by reading valid user or Inputting valid fingerprint or pressing admin code. 10.2 Reset to Factory Default Users can reset to device to its factory default if the Admin code is forgotten or the user wants to place the device back to factory original settings. To reset, follow the procedures below: Power off the device. Hold down the Exit button. Power on. Release the Exit button only when you hear the beep sound twice. The Admin code has been reset to 999999, factory and the device has defaulted to factory setting.

**Note:** Registered user data won't be deleted when reset to factory default.

### Data Backup Operation

**Example:** Backup the data of machine A to machine B The pink wire of machine A connects the pink-white wire of machine B, the pink-white wire of machine A connects the pink wire of machine B, set B for receiving mode at first, then set A for sending mode, the indicator light turns green flash during the data backup, data backup is successful when indicator light turns red.

## Documents / Resources



[cronte KI-CF2 Facial Recognition Access Control System \[pdf\] User Manual](#)  
KI-CF2 Facial Recognition Access Control System, KI-CF2, Facial Recognition Access Control System, Recognition Access Control System, Access Control System, Control System