

CREWORKS
V20240904 Wire
Stripper Machine



CREWORKS V20240904 Wire Stripper Machine User Manual

[Home](#) » [CREWORKS](#) » CREWORKS V20240904 Wire Stripper Machine User Manual 

Contents

- 1 CREWORKS V20240904 Wire Stripper Machine
- 2 Safety Information
- 3 Specifications
- 4 Package List
- 5 Product Diagram
- 6 Installation
- 7 Operation
- 8 Maintenance
- 9 Troubleshooting
- 10 FAQs
- 11 Documents / Resources
 - 11.1 References

CREWORKS

CREWORKS V20240904 Wire Stripper Machine



Specifications

- **Acceptable Wire Diameters:** Acceptable Wire Diameters* Dimensions Net Weight
- **Dimensions:** * Wire diameters INCLUDE insulation. (AWG conversion will vary with insulation thickness.)
- **Net Weight:** Net Weight

Package List

Item Name	Qty.
A Manual Wire Stripper	1
B Handle	1
E 4 mm Hex Wrench	1
F 5 mm Hex Wrench	1
G Work Gloves	1

Installation

1. Raise the blade by turning its adjustment knob counterclockwise to allow sufficient room between the blade and rollers for your wire.
2. Release the upper safety guard by loosening its locking knob on the left side of the device. Slide the guard up, feed your wire through the hole this creates, and slide the guard back down to your desired size. Check that the

edge of the hole does not

interfere with your wire feeding and then retighten the knob to lock the guard in place.

Operation

3. Insert your wire and then lower the blade by turning its adjustment knob clockwise until you feel the blade touch your wire.
4. Begin stripping the wire by turning the handle or using your impact wrench to do so.

Disclaimer

Read this disclaimer completely and carefully before proceeding with the rest of the manual content.

1. As-Is

This CREWORKS product is sold 'as is' and without any express or implied warranties, including but not limited to the implied warranties of merchantability and fitness for a particular purpose.

2. Product Modifications

Any modifications or alterations to CREWORKS products void any warranties and may result in damage or injury. CREWORKS shall not be liable for any damages resulting from such modifications or alterations.

3. Compliance with Laws

Customers shall be liable for ensuring that the use of CREWORKS products complies with all applicable laws and regulations in their respective jurisdictions. CREWORKS assumes no responsibility for any violations of laws or regulations resulting from the use of CREWORKS products.

4. Correct Use

- Always use CREWORKS products only as directed in the accompanying manuals. Failure to follow instructions may result in injury or damage.
- Always ensure the assembly, installation, operation, maintenance, or repair of CREWORKS products is carried out by a competent person.
- Always make maintenance regularly throughout CREWORKS products' lifecycles; you have the liability to keep the products operating as intended.
- Always wear appropriate protective gear.

5. Third-Party Products

CREWORKS shall not be liable for any damages or losses resulting from the use of third-party products in conjunction with CREWORKS products. Customers shall refer to the third-party's guidelines or/and warranties (if any) for any third-party products used.

6. Limitation of Liability

CREWORKS shall not be liable for any direct, indirect, punitive, incidental, special, or consequential damages to property or life, whatsoever arising out of or connected with the use or misuse of CREWORKS products. In no event shall CREWORKS's liability exceed the value of the products sold.

This disclaimer states the entire obligation of CREWORKS with respect to CREWORKS products. If any part of this disclaimer is determined to be void, invalid, unenforceable, or illegal, including but not limited to the warranty disclaimers, liability disclaimers, and liability limitations set forth above, the invalid or unenforceable provision will be deemed superseded by a valid and enforceable provision that most closely matches the intent of the original provision and the remainder of the agreement shall remain in full force and effect.

Safety Information

Warning!

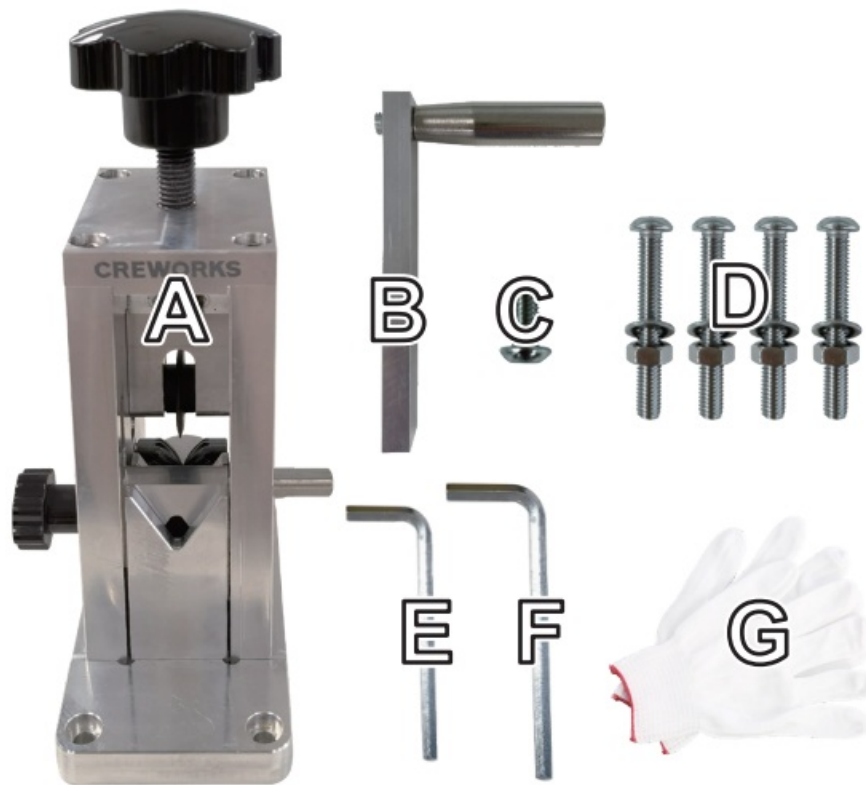
- Read these instructions carefully before use. Follow ALL instructions and contact customer service if any point is confusing or unclear. Keep these instructions for future reference. Provide them to anyone who will use this device and provide them with this device if it is ever given or sold to a third party.
- DO NOT allow use by children, by anyone who has not read these instructions, or by any person whose mental or physical condition precludes safe use. Keep children, bystanders, and pets away while using this device. Restrict access to the work area if necessary.
- DO NOT use this device if you are tired or under the influence of drugs, alcohol, or medication.
- NEVER operate this device in the presence of any flammable, explosive, or corrosive liquids, gases, or dust.
- ONLY use in well-ventilated locations to allow debris and fumes to dissipate quickly.
- ALWAYS keep your work area clean and well-lit. Cluttered or dark areas invite accidents.
- ONLY place this device on even, stable, heat-resistant, and nonslip surfaces. Firmly attach this device to the surface using the provided bolts.
- ALWAYS wear appropriate personal protective equipment (PPE) including hand protection during use. Depending on your application or work area, eye and breathing protection may be necessary. The breathing protection must be able to filter all particles generated by your work, even when working outdoors. Anyone allowed nearby during use should wear equivalent PPE.
- DO NOT wear loose clothing or jewelry and tie back long hair during operation. Keep your clothing, hair, and gloves away from any moving parts.
- DO NOT overreach. Keep proper footing and balance at all times.
- ALWAYS remove any adjustment tools before starting use.
- NEVER place your fingers or any other body parts near the cutting area during use.
- DO NOT force this device. Only use on wires within the size range specified in this manual and only with the guards and blades set to the appropriate height. Clean and lubricate as needed if parts begin to move slowly.
- NEVER leave this device unattended or adjust this device’s settings during use.
- DO NOT touch the blade, rollers, or other parts in the cutting area with bare skin immediately after use, as they may remain hot.
- Clean and maintain this device. Check for misalignment, breakage of components, or any other condition that may affect the device’s operation. If damage or malfunction is detected, have the problematic part repaired or replaced before further use. NEVER replace any components with nonidentical ones.

Specifications

Acceptable Wire Diameters*	7/0–15AWG	1.5–23mm
Dimensions	5.7×4.1×8.1–8.9in.	14.5×10.5×20.5–22.5cm
Net Weight	4.2lb.	1.9kg

Wire diameters INCLUDE insulation. (AWG conversion will vary with insulation thickness.)

Package List

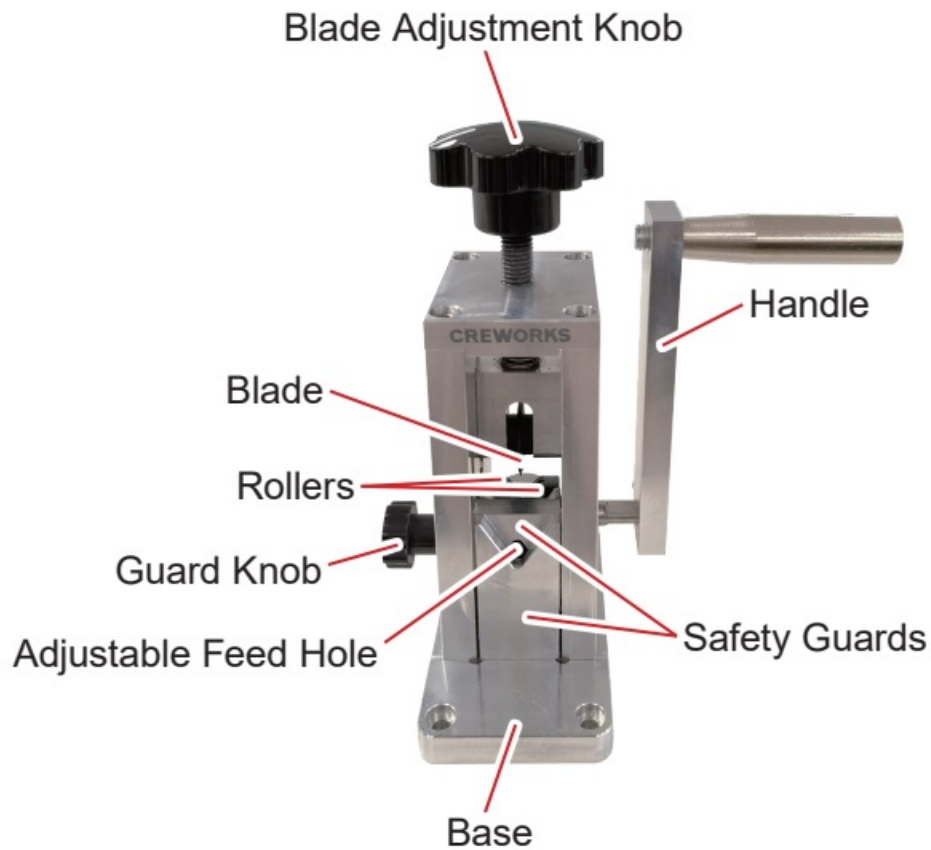


Item	Name	Qty.
A	Manual Wire Stripper	1
B	Handle	1
C	M6×14 Bolt	1
D	M6×45 Bolts with Nuts & Washers	4
E	4 mm Hex Wrench	1
F	5 mm Hex Wrench	1
G	Work Gloves	1

Not Included but Helpful

- Impact Wrench
- Power Drill
- Tap Wrench
- 9 mm Hex Socket
- 40 mm Wood Board
- Mineral Oil

Product Diagram



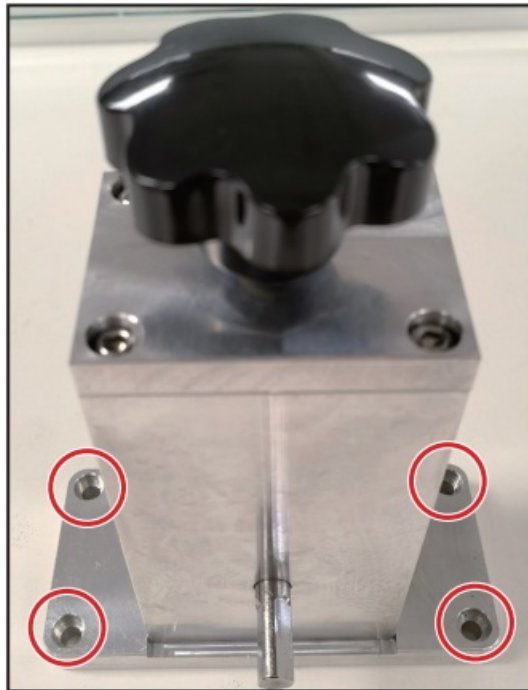
Installation

ALWAYS use the appropriate PPE for your work such as the work gloves (G) and NEVER place any body part near the cutting area during use.

1. Connect the handle (B) to the right side of the wire stripper (A). Secure it in place using the M6×14 bolt (C) and the 4 mm hex wrench (E). Alternatively, you can replace the handle with an impact wrench and 9 mm hex socket (not included).

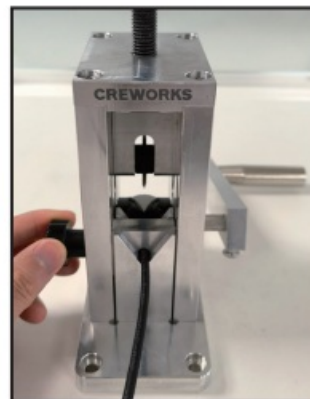


2. Attach the device to any level and sturdy surface at least 1 $\frac{5}{8}$ inches (40 mm) thick using the M6×45 bolts (D) and the 5 mm hex wrench (F).

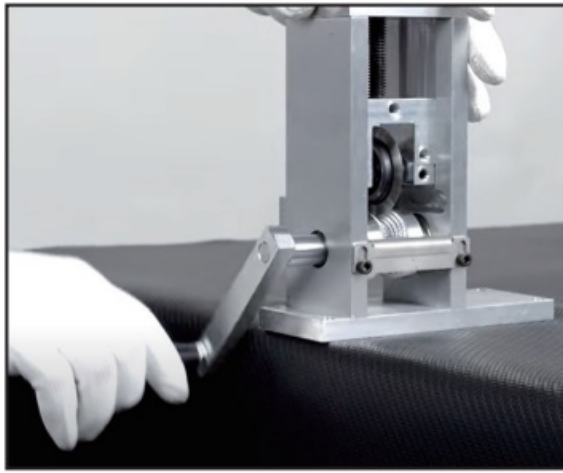


Operation

1. Raise the blade by turning its adjustment knob counterclockwise to allow sufficient room between the blade and rollers for your wire.
2. Release the upper safety guard by loosening its locking knob on the left side of the device. Slide the guard up, feed your wire through the hole this creates, and slide the guard back down to your desired size. Check that the edge of the hole does not interfere with your wire feeding and then retighten the knob to lock the guard in place.



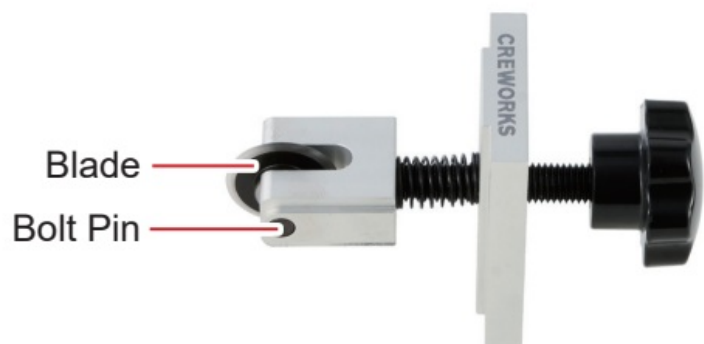
3. Insert your wire and then lower the blade by turning its adjustment knob clockwise until you feel the blade touch your wire.
4. Begin stripping the wire by turning the handle or using your impact wrench to do so.



- If your wire's insulation is not removed, stop use, raise the blade, remove your wire, and then further lower the blade before beginning again.
 - NEVER adjust any setting while the blade is still moving.
 - To pause work, follow the same process. Stop use, raise the blade, and remove your wire.
 - DO NOT leave partially stripped wire lying in the device unattended.
5. After all your work is completely finished, remove any debris from the device.

Maintenance

- Clear any remaining debris, dust, or other dirt off the blade, rollers, feed holes, base, and any other external surfaces with a soft damp cloth, a soft dry brush, or OSHA/HSE-compliant levels of compressed air. Do not use harsh abrasives or caustic chemicals.
- Lubricate the moving parts with mineral oil (not included) as needed, particularly the blade and rollers.
- Replace the blade when it no longer provides quick or smooth cuts:
 1. Unscrew the four bolts around the blade adjustment knob using the 4 mm hex wrench.
 2. Remove the blade assembly by pulling up the blade adjustment knob.
 3. Press out the bolt pin using a correct tool.
 4. Replace the blade with a new identical one. Wear the work gloves to protect your hands.
 5. Reinsert the bolt pin to lock your new blade into place.
 6. Reinstall the blade assembly using the bolts removed in Step 1.



- Check the parts for any looseness, wear, or damage between uses. Tighten, repair, or replace any problematic components before further use.
- If this device will not be used for an extended period of time, unbolt it and store it and its accessories in a cool dry place away from direct sunlight and inaccessible to children.

Troubleshooting

Possible Problems	Usual Solutions
The cut on the wire is too deep.	Raise the blade by turning its adjustment knob counterclockwise.
	Adjust the feed hole appropriately for the wire's total diameter including insulation.
The plastic covering has been cut open but the copper wire cannot be removed.	Lower the blade by turning its adjustment knob clockwise.
	Adjust the feed hole appropriately for the wire's total diameter including insulation.
The wire jams inside the device.	Stop the rollers and raise the blade as above. Pull the wire out, lower the blade back into place, and reinsert the wire.
	Clean the wire if it has dirt, grime, etc. that are obstructing this device. Clear off any debris remaining inside the device before further use.

Contact Us

Thank you for choosing our products! If you have any questions or comments, contact us at contact@b2ccsgroup.com and we'll resolve your issue ASAP! For a .pdf copy of the latest version of these instructions, use the appropriate app on your smartphone to scan the QR code to the right.



FAQs


Q: Can I use this wire stripper for cables with varying insulation thickness?

A: Yes, the wire stripper can accommodate wire diameters with varying insulation thickness. However, ensure proper adjustment for different insulation types.

Q: What should I do if the blade becomes dull?

A: If the blade becomes dull, follow the manufacturer's instructions for blade replacement or sharpening to maintain optimal performance.

Documents / Resources

	CREWORKS V20240904 Wire Stripper Machine [pdf] User Manual V20240904 Wire Stripper Machine, V20240904, Wire Stripper Machine, Stripper Machine, Machine
---	--

References

- [User Manual](#)

[Manuals+](#), [Privacy Policy](#)

This website is an independent publication and is neither affiliated with nor endorsed by any of the trademark owners. The "Bluetooth®" word mark and logos are registered trademarks owned by Bluetooth SIG, Inc. The "Wi-Fi®" word mark and logos are registered trademarks owned by the Wi-Fi Alliance. Any use of these marks on this website does not imply any affiliation with or endorsement.