




# CRESTiN CRADMW101 Smart Dimmer Switch Installation Guide

[Home](#) » [CRESTiN](#) » CRESTiN CRADMW101 Smart Dimmer Switch Installation Guide 

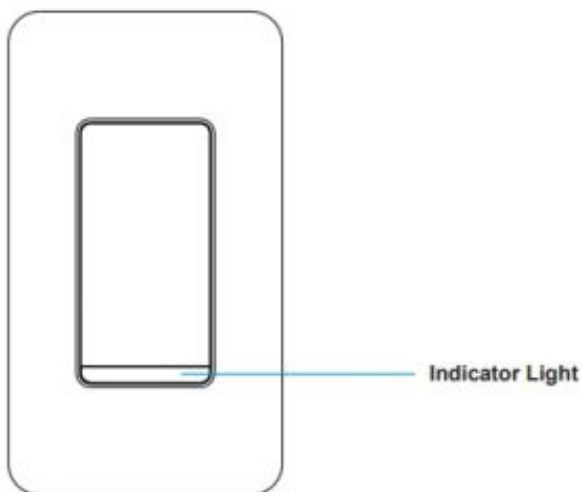
## Contents

- [1 CRESTiN CRADMW101 Smart Dimmer Switch Installation Guide](#)
- [2 Smart Dimmer Switch](#)
  - [2.1 Push Button](#)
- [3 Compatibility Requirements](#)
  - [3.1 BEFORE YOU INSTALL](#)
  - [3.2 WARNING: RISK OF ELECTRIC SHOCK](#)
  - [3.3 YOU NEED](#)
  - [3.4 DIY Setup](#)
  - [3.5 LET'S BEGIN](#)
  - [3.6 Step 1](#)
  - [3.7 Step 2](#)
  - [3.8 Identify the wires and Remove Your Old Switch](#)
  - [3.9 Step 3](#)
  - [3.10 Connect the wires](#)
  - [3.11 Step 4](#)
  - [3.12 Step 5](#)
  - [3.13 Turn power ON at circuit breaker](#)
  - [3.14 Congratulations!](#)
  - [3.15 Next](#)
- [4 FCC STATEMENT](#)
- [5 Read More About This Manual & Download PDF:](#)
- [6 Documents / Resources](#)
- [7 Related Posts](#)

## CRESTiN CRADMW101 Smart Dimmer Switch Installation Guide



### Smart Dimmer Switch



#### Push Button

Short Press Once: Turn on/off long Press for 5s:Reconnect  
Quick Press 3 Times :Effective Range Test

### Compatibility Requirements

Rating  
120V AC 60Hz  
150W LED/CFL  
600W Inc./Hal.  
Wi-Fi 802.11 b/g/n @ 2.4 GHz

#### BEFORE YOU INSTALL



## WARNING: RISK OF ELECTRIC SHOCK

PLEASE SHUT OFF POWER at circuit breaker or fuse and test that power is off before wiring.

This product installation requires handling 120V wiring. If you are unsure about the structure, please hire a qualified electrician.



Make sure your wiring is compatible. The Crest in Dimmer Switch

Requires neutral wire connection; Dimmer Switch replaces single-pole switches only. If your light can be turned on from two different wall switches, that's a 3-way switch and Crest in Dimmer Switch is not compatible;

If your lights have more than one switch (called a 3-way), we have created instructions for how to install and enable the capability.

Visit [crestinsmart.com/support/3-way](https://crestinsmart.com/support/3-way) For 3-way installation instructions and how to do;

## YOU NEED



Phillips Screwdriver

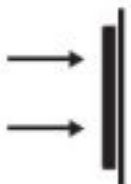


Needle Nose Pliers



Voltage Tester (recommended)

## DIY Setup



**Install**

Your  
smart switch



**Download**

The  
CRESTIN APP



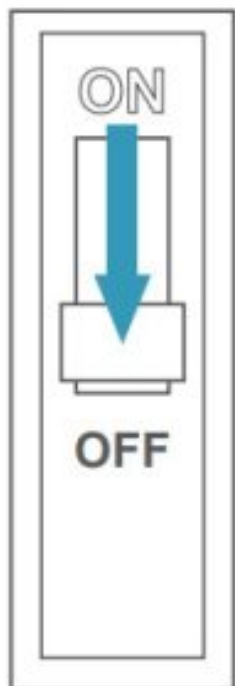
**Add**

Your Smart  
Switch to the APP

## LET'S BEGIN

### Step 1

Turn power OFF at circuit breaker



**WARNING:SHOCK HAZARD**

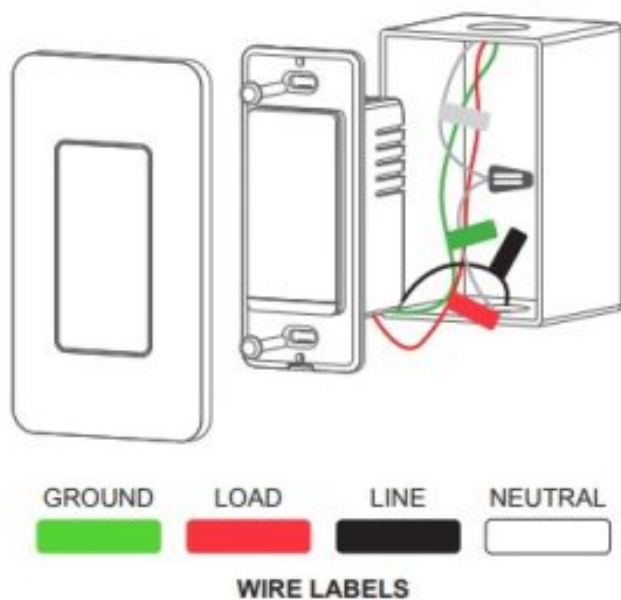
May result in serious injury or death.

Turn off power at circuit breaker or fuse before installing.

## Step 2

### Identify the wires and Remove Your Old Switch

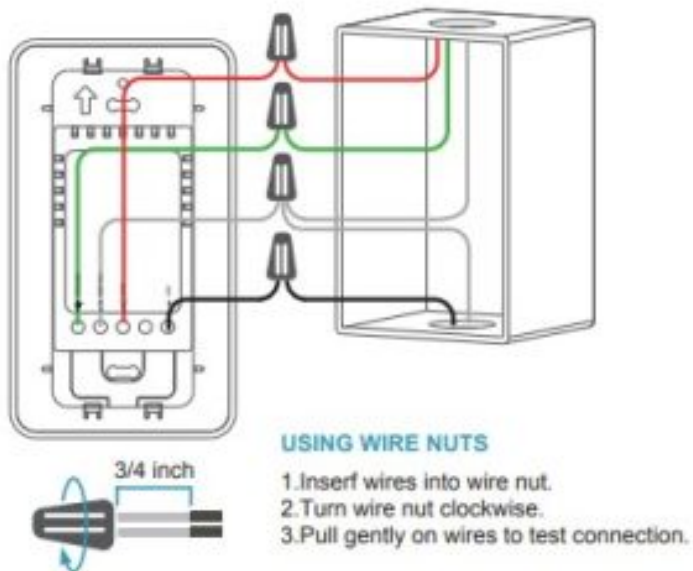
1. Remove the faceplate from the existing switch.
2. Use voltage tester on the black wire to confirm power to the switch is off (recommended)
3. Before disconnecting the wires from the wall, label each with the provided wire labels; If you don't have neutral wires (usually white), the smart dimmer switch is not compatible;
4. Disconnect wires and remove existing switch.



### Step 3

#### Connect the wires

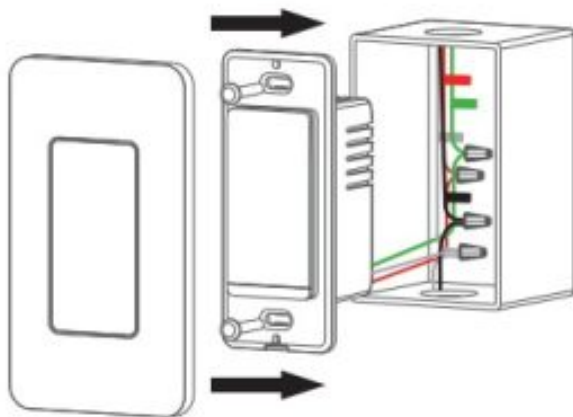
1. Connect the neutral (white) wire on the switch to the neutral (White) wire from the wall.
2. Connect the line (Black) wire on the switch to the line (black) wire from the wall.
3. Connect the load (Red) wire on the switch with the load (red) wire from the wall.
4. Connect the Ground (green) wire on the switch with the ground (green) wire on the wall.
5. Cap the 3-way/multi-way traveler wire (if applicable)
6. For 3-way switch setup, please visit [www.crestinsmart.com/support/3-way](http://www.crestinsmart.com/support/3-way)



### Step 4

#### Secure The Switch

1. Neatly push the wires back into the box, rotating the switch so it's oriented According to the image.
2. Using a screwdriver and the screws provided secure the switch to the wall until level and flush, then the faceplate cover onto the bracket



### Step 5

#### Turn power ON at circuit breaker

The network indicator (green) will flash quickly for three minutes after power on. If network indicator doesn't light up.

1. Check the button switch can control the light? Yes- Long Press for 10s: Reconnect NO If lights don't turn on
2. Check that power to the switch is on and the breaker.
3. Turn power off at the breaker, return to the switch to confirm the wires are securely and properly wired according to the installation guide.



**Congratulations!**

**Next**



**Download**

The  
CRESTIN APP



**Add**

Your smart switch  
to the CRESTIN APP



**Setup**

Your Alexa or  
Google voice  
assistant (optional)



## FCC STATEMENT

1. This device complies with Part 15 of the FCC Rules. Operation is subject to the following two conditions:
  - (1) This device may not cause harmful interference.
  - (2) This device must accept any interference received, including interference that may cause undesired operation.
2. Changes or modifications not expressly approved by the party responsible for compliance could void the user's authority to operate the equipment.

NOTE: This equipment has been tested and found to comply with the limits for a Class B digital device, pursuant to Part 15 of the FCC Rules.

These limits are designed to provide reasonable protection against harmful interference in a residential installation. This equipment generates uses and can radiate radio frequency energy and, if not installed and used in accordance with the instructions, may cause harmful interference to radio communications. However, there is no guarantee that interference will not occur in a particular installation. If this equipment does cause harmful interference to radio or television reception, which can be determined by turning the equipment off and on, the user is encouraged to try to correct the interference by one or more of the following measures: Reorient or relocate the receiving antenna. Increase the separation between the equipment and receiver. Connect the equipment into an outlet on a circuit different from that to which the receiver is connected. Consult the dealer or an experienced radio/TV technician for help.

FCC Radiation Exposure Statement This equipment complies with FCC radiation exposure limits set forth for an uncontrolled environment.

This equipment should be installed and operated with minimum distance 20cm between the radiator & your body

***Read More About This Manual & Download PDF:***

## Documents / Resources

	<b><a href="#">CRESTiN CRADMW101 Smart Dimmer Switch</a></b> [pdf] Installation Guide CRADMW101, 2AZWD-CRADMW101, 2AZWDCRADMW101, CRADMW101 Smart Dimmer S witch, CRADMW101, Smart Dimmer Switch
--	--