



crest SHLBL Smart Lock Passkey Lock Box User Manual

[Home](#) » [CREST](#) » crest SHLBL Smart Lock Passkey Lock Box User Manual 

Contents

- [1 crest SHLBL Smart Lock Passkey Lock Box](#)
- [2 Know your Lock:](#)
 - [2.1 More Functions:](#)
- [3 Specifications:](#)
- [4 Accessories Included:](#)
 - [4.1 Low Power Alert:](#)
 - [4.2 Share Device:](#)
 - [4.3 Disconnect \(Reset to Factory Mode\):](#)
- [5 Download The Mobile App:](#)
- [6 Powering Up Lock – First Time:](#)
 - [6.1 Settings:](#)
- [7 Documents / Resources](#)
- [8 Related Posts](#)

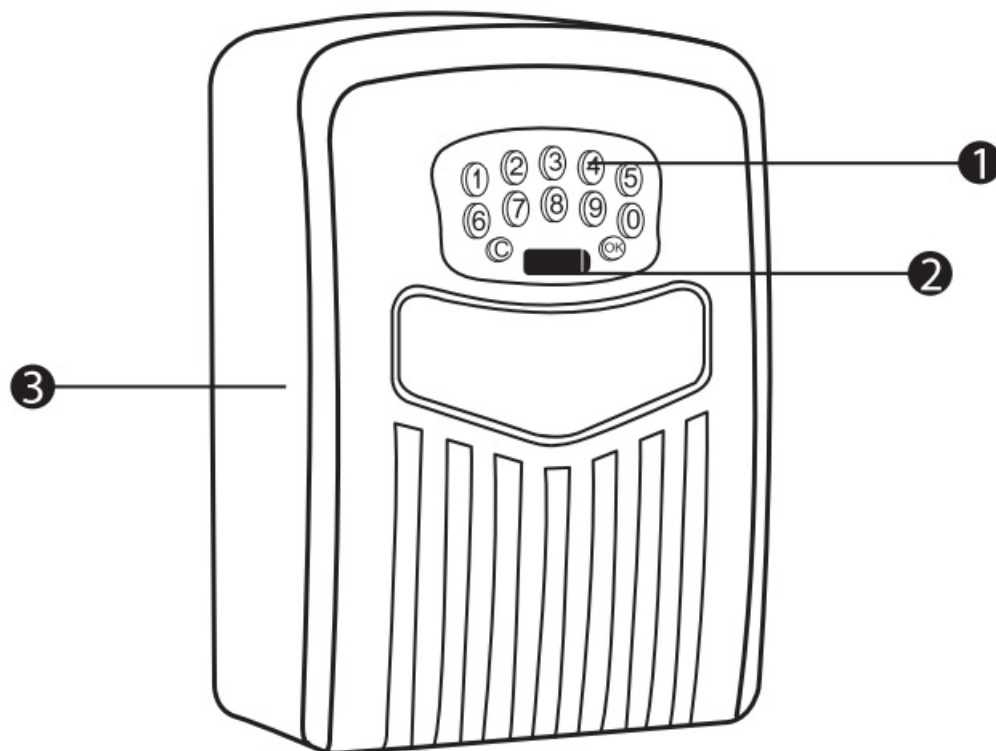
crest

crest SHLBL Smart Lock Passkey Lock Box



Know your Lock:

1. Numeric Keypad
2. Micro-USB Access Port
3. Metal Outer Casing



Note:

1. The 4 AAA alkaline batteries are not included.
2. With the supplied Micro-USB cable, plug one end into the lock charging port and adequate power supply. Enter 123456+0K button to open the door to install the batteries before getting started.
3. After the lock box is configured, the initial password 123456 will be invalid and needs to be modified in the

password settings within the App.

4. The lock requires a network connection to set passwords, view records and remove devices.
5. The additional family members are set up as administrators, with all permissions to set and modify passwords, share devices, and view records. Other members who join the group via invitations are ordinary users and have limited access to unlock via mobile phone or the passwords shared by the administrator.

More Functions:

Users: Add/manage/remove family members, friends or visitors (by adding their App Account) to your lock so they will have access to your lock at a designated time period or permanently. **Unlock Logs:** A list of unlock records.

Linkage Setting: You can set “if this then that” linkage on this function.

Specifications:

- Keypad: 12 Digit Keypad
- Material: Zinc Alloy/ABS
- Battery Size: 4 xAAA Alkaline (Not included)
- USB Interface: Micro-USB 5V DC
- External Size: 45 x 105 x 55mm
- Internal Size: 12 x 80 x 28 mm
- IP Rating: IP65


Accessories Included:

- Key Lock Box X 1
- Mounting Template X 1
- Micro-USB Cable X 1
- Mounting Bolts x4
- Mounting Screws x4


Low Power Alert:

The lock details within the App will show the battery status. If the batteries do go flat, you can power the device via the Micro-USB access port and a power source like a power bank to power up the device to unlock and change batteries.

Share Device:

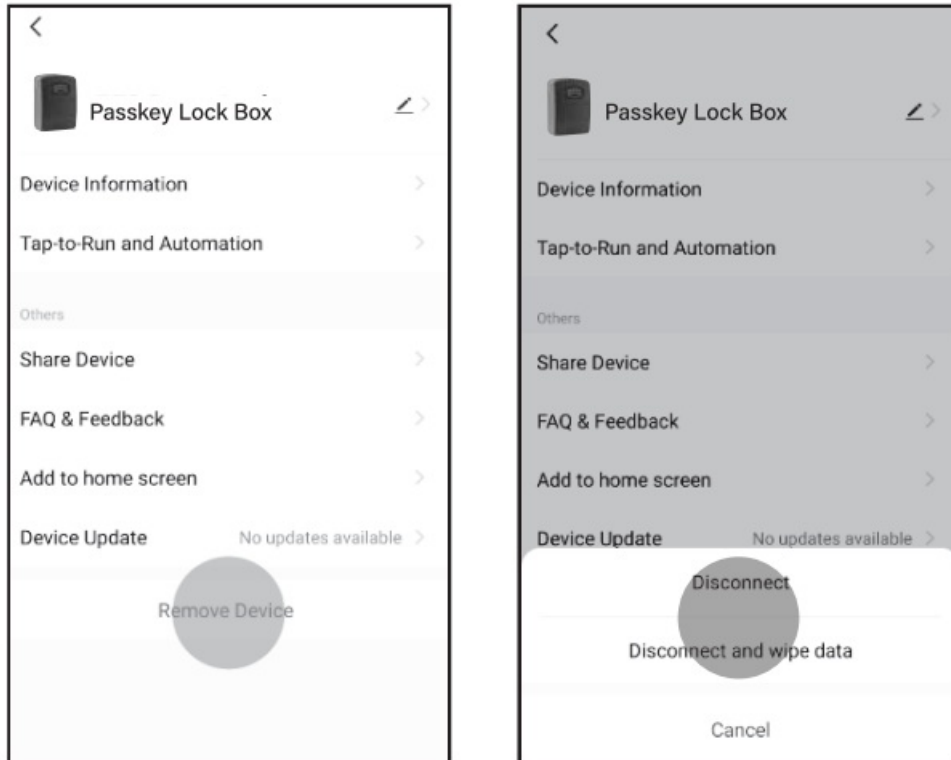
- Step 1. Ensure the lock and device are within 5m of each other
- Step 2. Select the lock and enter the lock page
- Step 3. Select the  ,
- Step 4. Select “Share Device” tab
- Step 5. Select “add Sharing” This will share a link to the lock within Crest Smart App. If you select the “More” tab you will be able to choose what platform you wish to share the link with Crest Smart App. If you select the “More” tab you will be able to choose what platform you wish to share the link with

Disconnect (Reset to Factory Mode):

- Step 1: Tap  on the lock's homepage (top-right)
- Step 2: Tap "Remove Device"
- Step 3: Tap "Disconnect and wipe data"

NOTE! All fingerprints previously set will be deleted if you choose "disconnect and wipe data"

- Step 4: Tap "Confirm" to disconnect the lock from your App account, the lock is now reset to the display/factory mode and will be able to be unlocked with the factory passkey of 123456+0K



Download The Mobile App:

You can search Crest Smart in the iOS App Store (Apple) or Google Play Store (Android), or scan the QR code to download Crest Smart App

Note: You will need to be within a 5m range for App connection to the lock for initial set up, updates and for normal operation



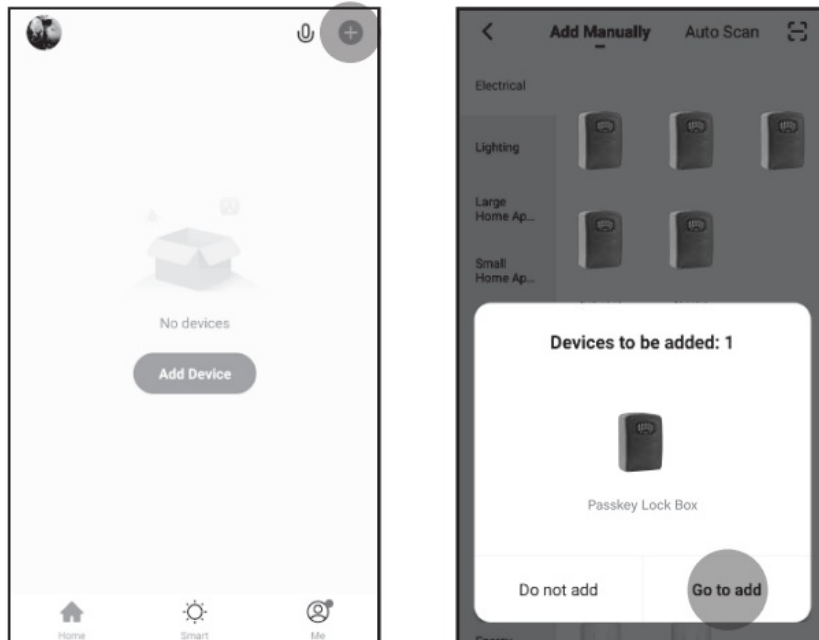
Powering Up Lock – First Time:

- Step 1. Plug the Micro-USB cable into the charging port and to an adequate power supply to power the device for the initial unlocking

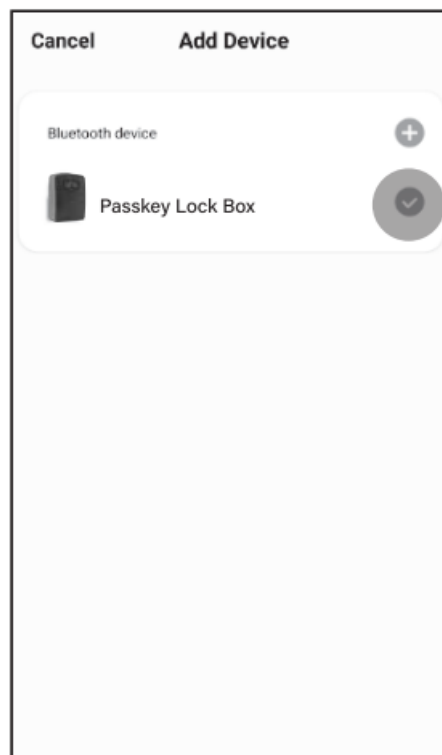
- Step 2. Enter factory password 123456 + the OK button to unlock and open Step 3. Install 4 AAA Alkaline batteries (not included)

Connect your Lock With App:

- Step 1: Open the App, register an account
- Step 2: Tap+ on the App
- Step 3: Tap “Go to add”



- Step 4: Tap “NEXT” (Device added successfully)



Temporary Password Types: (Passwords don't show on records)

1. Time-limited Password: Valid within a 24hr time period

2. One-time Password: Valid within a 6hr period and can only be used once
3. Dynamic Password: Valid within a 10min period and can be used multiple times
4. Cleaning Password: Valid within a 24hr period (clears pervious time limited passwords
5. Custom Password: Set custom passwords (lock must be connected to the users device)

Temporary Password Management:

Password Sharing Settings: The receiver must have downloaded the App and have a linked account set up

- Step 1. Log into the App – Select the lock and select “Temporary Code” menu
- Step 2. Select the Code style
- Step 3. Select the type (Time-Limited, One-Time, Dynamic, Clearing or Custom
- Step 4. If custom code is selected enter the 6 to 10 digit code of your choice Step 5. Select the effective and expiration times to take effect
- Step 6. Assign a name for the temporary password
- Step 7. Select “Save” for all settings to take place

Mobile Phone Password Setting:

- Step 1. Log into the App and select the lock and enter the “Temporary Code” menu. Select the “Bluetooth” menu
- Step 2. Select code type (Time-limited or One-time) option
- Step 3. Select the Country/Region for correct Country Code
- Step 4. Complete the mobile number or email address for the recipient
- Step 5. Complete the effective time and also expiration time for the password Step 6. Assign a name for the temporary password
- Step 7. Select “Send” for all passwords to take place

App Lock:

- Step 1. Log into the App and select the lock (if not available tap “Tap to connect the device” this will re-pair the lock to the device. You will need to be within 5m for this to connect
- Step 2. Slide the key icon towards the padlock icon on the bottom of the screen to unlock the lock

Password Unlock:

- Step 1. Enter the set password and press “OK” on the keypad View Access Log:
- Step 1. Select the log Tab – View time of activations and linked users in this view

Remove Device:

- Step 1. Ensure the lock and device are within 5m of each other
- Step 2. Select the lock and enter the lock page
- Step 3. Select the
- Step 4. Select the “Remove Device” tab

- Step 5. Either select the “Disconnect” or “Disconnect and wipe data” options Step 6. Confirm or Cancel the option

Settings:

Remote Unlock: This option will allow you to turn OFF/ON the unlock option.

Please note, not all options within the App maybe be available for the lock due to future App and product software updates

PO Box 5658 Brendale

QLD Australia 4500


Customer Support

1800 812 261

www.crest.com.au

AUSTRALIAN OWNED

Documents / Resources

 The image shows the Crest SHLBL Smart Lock Passkey Lock Box. It is a white, rectangular device with a digital display and a keypad. The text "Crest Smart Lock" is at the top, followed by "SMART PASSKEY LOCK BOX" and "SHLBL". Below the device are icons for "APP", "PASSKEY", and "REMOTE". At the bottom are logos for "Type", "Crest", "Bluetooth", and "Smart Lock".	<p>crest SHLBL Smart Lock Passkey Lock Box [pdf] User Manual</p> <p>SHLBL, Smart Lock Passkey Lock Box, SHLBL Smart Lock Passkey Lock Box</p>
---	---