

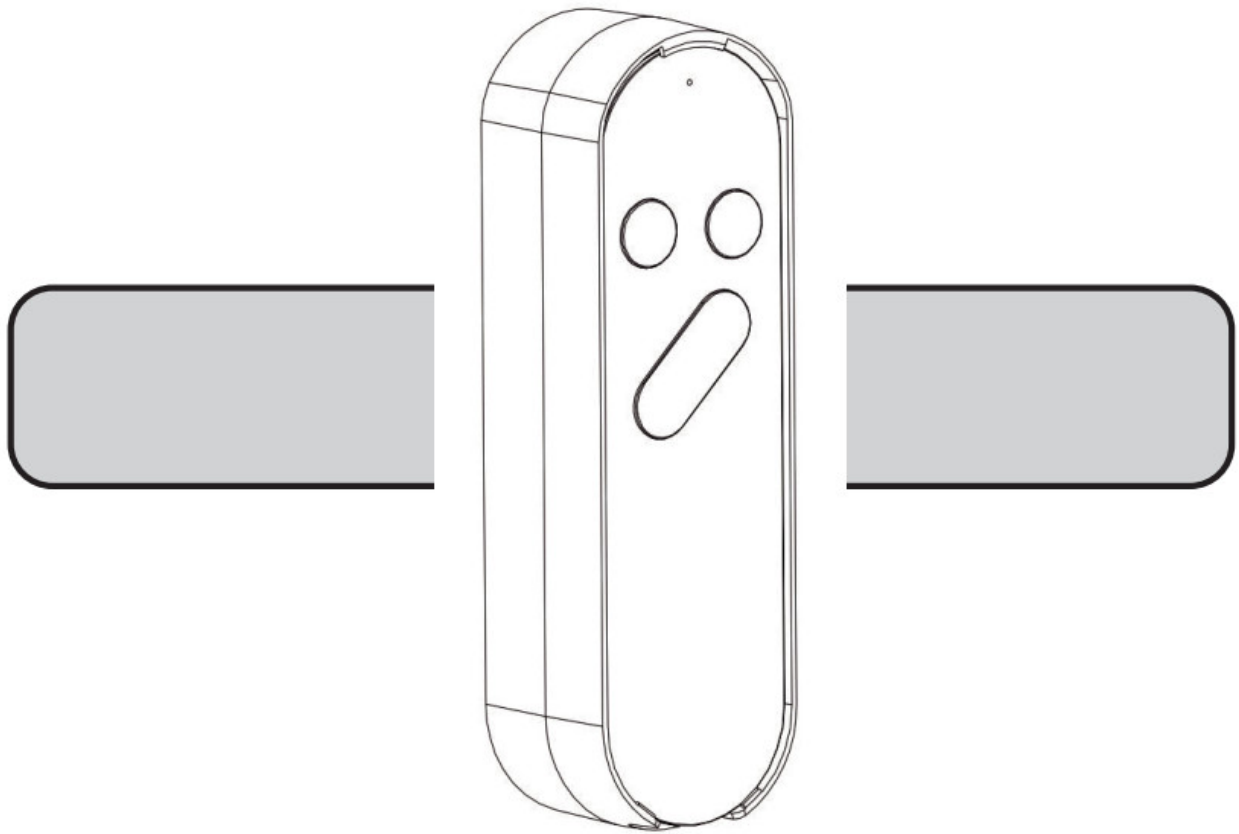


CREE LIGHTING CMACC-RMT-WH Connected Max Remote Controller for Connected Max SMART Light Bulbs Instruction Manual

[Home](#) » [CREE LIGHTING](#) » CREE LIGHTING CMACC-RMT-WH Connected Max Remote Controller for Connected Max SMART Light Bulbs Instruction Manual 



**Connected Max Remote Controller for
Connected Max SMART Light Bulbs
Includes: CMACC-RMT-WH
INSTALLATION INSTRUCTIONS
INSTRUCTIONS D'INSTALLATION**



Remote control Dimmer

Contents

- [1 IMPORTANT SAFEGUARDS](#)
- [2 READ AND FOLLOW ALL SAFETY INSTRUCTIONS](#)
- [3 SAVE THESE INSTRUCTIONS FOR FUTURE REFERENCE](#)
- [4 SPECIFICATIONS](#)
- [5 FEATURES](#)
- [6 TO INSTALL:](#)
- [7 INSTALLATION](#)
- [8 PAIR REMOTE WITH SMART DEVICES](#)
- [9 RESET INSTRUCTIONS](#)
- [10 HOLDER INSTALLATION – MAGNET OR 3M COMMAND STRIP TAPE](#)
- [11 FCC](#)
- [12 Documents / Resources](#)
- [13 Related Posts](#)

IMPORTANT SAFEGUARDS

When using electrical equipment, basic safety precautions should always be followed including the following:

READ AND FOLLOW ALL SAFETY INSTRUCTIONS

1. Indoor use only and suitable for dry locations. Pour usage interieur seulement et convient aux emplacements humides.
2. Don't use solvents such as benzol, alcohol, or other fluids with very strong volatility and flammability for cleaning the apparatus body. Clean only with a dry cloth.

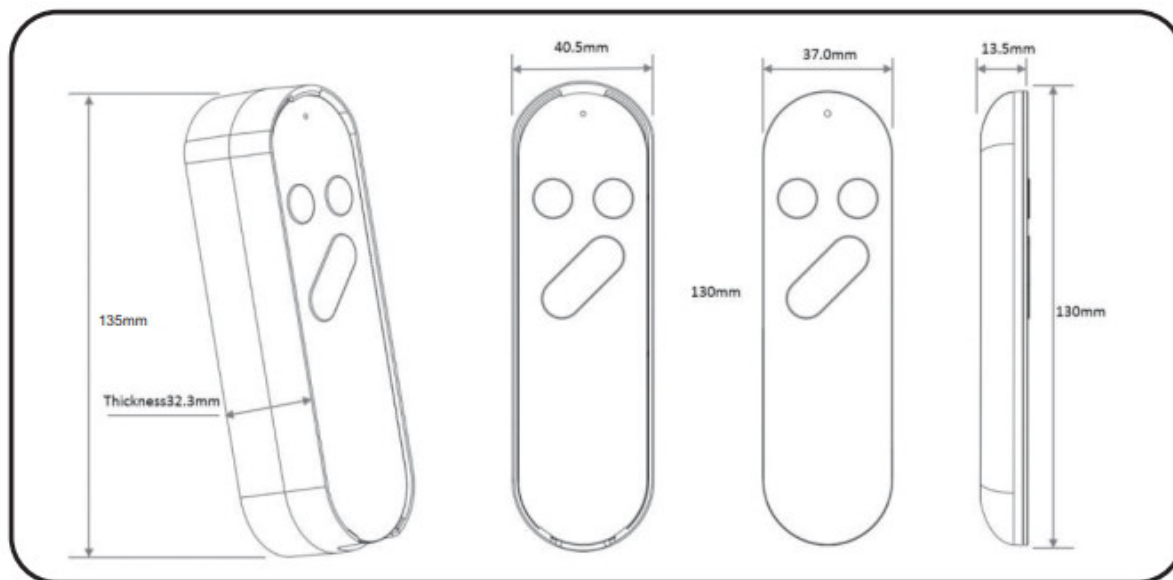
3. When the apparatus needs cleaning, you can blow off the dust from the apparatus with a blower or clean it with a rag, etc.

SAVE THESE INSTRUCTIONS FOR FUTURE REFERENCE

UNIT DESCRIPTION

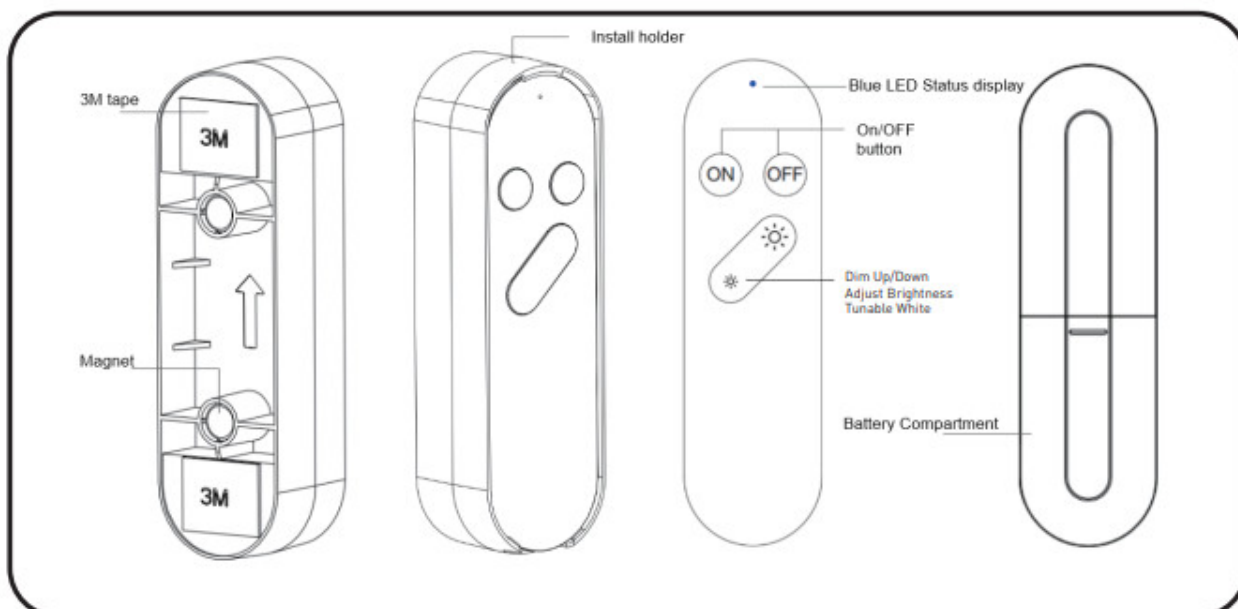
The Connected Max Remote Controller is for use with Connected Max Smart light bulbs. The Connected Max Remote Controller provides on, off, dimming control, and tunable white adjustment.

SPECIFICATIONS



- | | |
|--|--|
| <ul style="list-style-type: none">• Rated Voltage: DC 2.3-3.1V, 2*1.5V AAA battery;• Wireless Standard: 2.4Ghz IEEE 802.11 b/g/n;• Communicate Range: $\leq 20\text{M}$(in open air environment)• Device Connectivity: <15(up to the router capacity)• Static Current Loss: $<4\mu\text{A}$ | <ul style="list-style-type: none">• Working Current: 140mA@3.0V• Operation Temperature: $-10\sim+45$• Storage Temperature: $-20\sim+70$;• Remote Dimensions: 130*37*14mm• Holder Dimensions: 135*40.5*32.3mm |
|--|--|

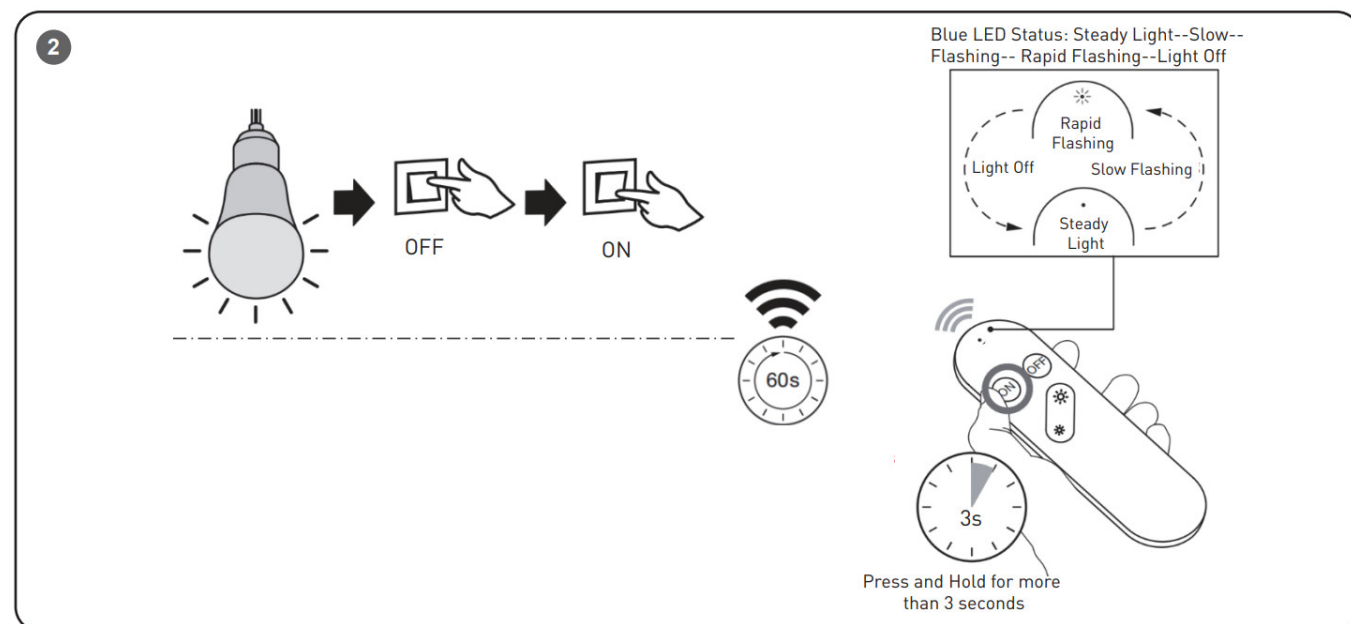
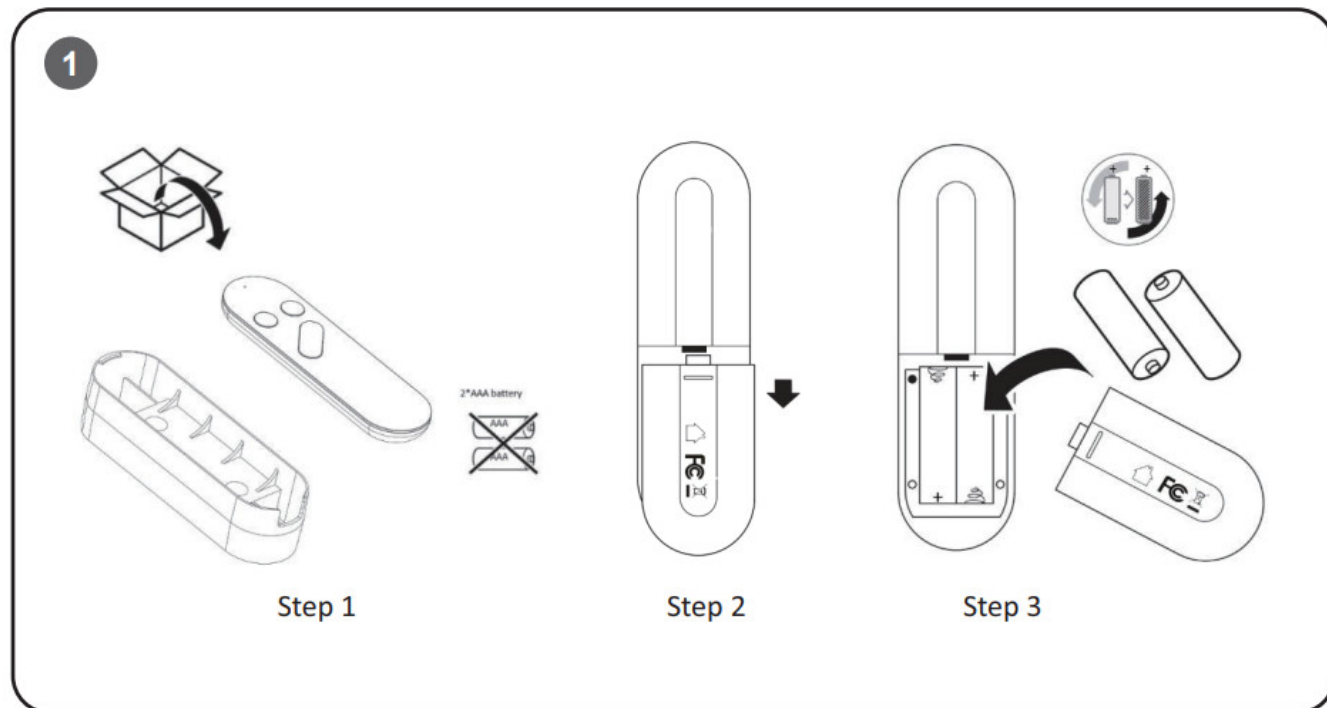
FEATURES



- Works with Connected Max Smart LED light bulbs.
- Switch ON/Switch OFF control
- Adjust lighting brightness, press Dim Up / Dim Down to adjust brightness 20% per press.

- Adjust tunable white, press and hold Dim Up / Dim Down button to adjust white from warm to daylight.
- Remote holder attaches over an existing light switch magnetically or with 3M tape.
- Batteries not included.

TO INSTALL:



INSTALLATION

STEP 1:

Before you use the remote, please prepare a 2pcs AAA battery (1.5V).

STEP 2:

Refer to Figure 1 to install the batteries.

STEP 3:

Download the free App by searching for Cree Lighting in the App store. Refer to the PAIR REMOTE WITH

SMART DEVICES section to add the remote to the App.

NOTE: The remote can be paired with up to a maximum of 15 devices

PAIR REMOTE WITH SMART DEVICES

STEP 1:

Ensure the Smart light has been paired with the App.

STEP 2:

Power off and power on the Smart light at the switch to put it in the pairing mode. See Figure 2.

STEP 3:

Within 60 seconds, press and hold the 'ON' button on the remote for more than 3 seconds. The remote controller's indicator will show a slow flashing LED, then release the "ON" button. See Figure 2.

STEP 4:

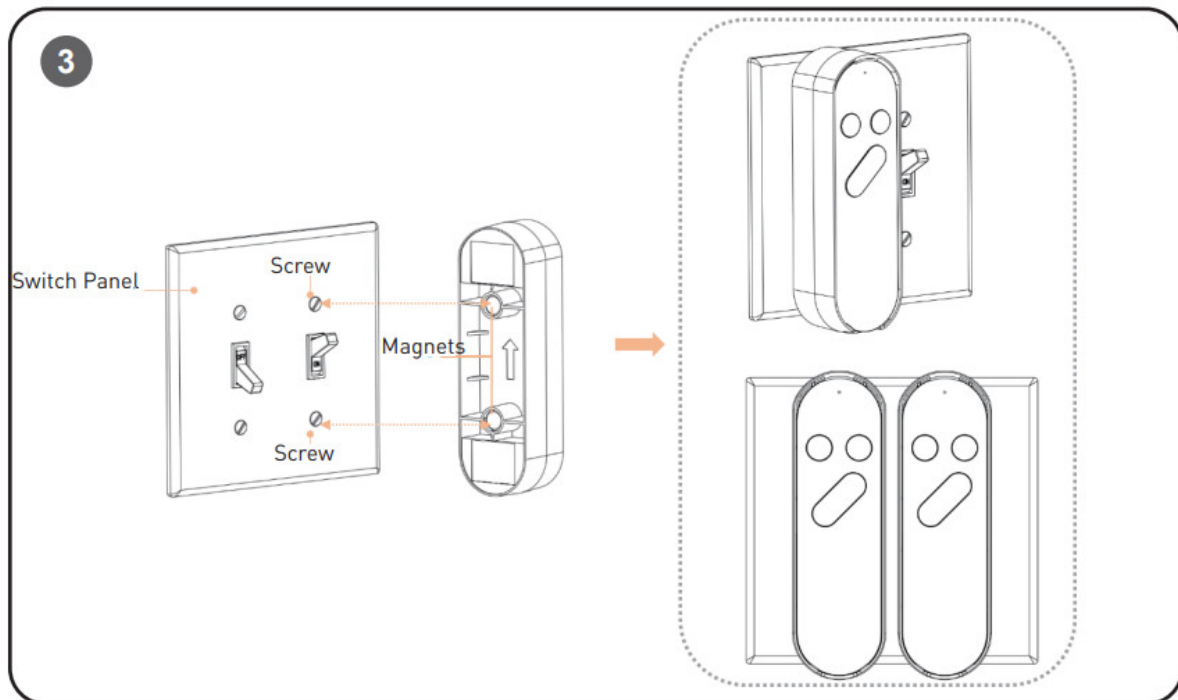
A remote controller icon will appear on the App, which means the remote is already added to the App.

STEP 5:

Tap on the remote icon in the App to configure your paired Smart lights.

RESET INSTRUCTIONS

Reset Remote Controller:



Open the APP, Tap the Remote Controller icon in the APP. Tap the setup sign on the top right corner, Tap the Remove Device sign, Tap the Disconnect and Wipe Data. Check the Remote Controller icon is not displayed in the APP, which means the reset is finished.

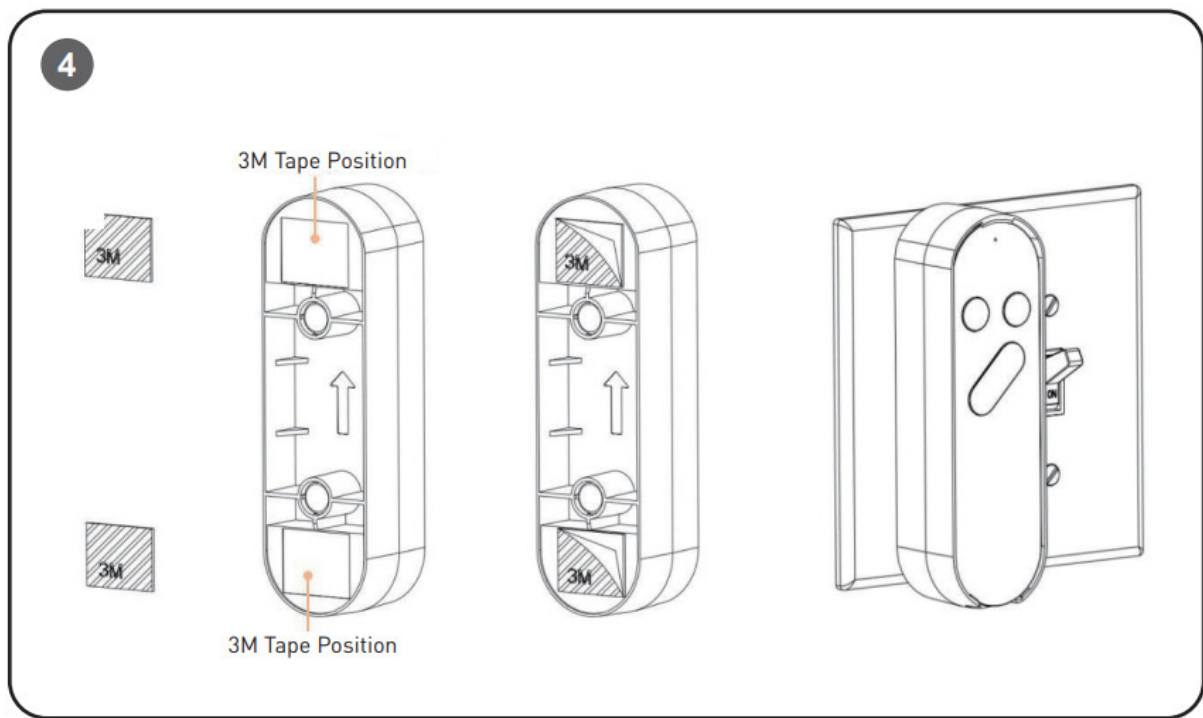
HOLDER INSTALLATION – MAGNET OR 3M COMMAND STRIP TAPE

MAGNET INSTALLATION

STEP 1:

The remote holder comes with 2 magnets installed on the back of the remote holder. The holder can be attached by aligning the magnets to the screws on the switch panel. This is suitable for single switch panels or switch panels with multiple switches. The remote holder can also be attached to a metal appliance or surface. See **Figure 3**.

3M TAPE INSTALLATION



NOTE: There are 2 pieces of 3M adhesive tape for attaching the remote holder to a smooth clean surface.

STEP 1:

Clean the surface with rubbing alcohol.

STEP 2:

Remove the black liner and press the adhesive to the holder above or below the magnet hole. See **Figure 4**.

STEP 3:

Remove the red liner on both adhesive strips. See **Figure 4**.

STEP 4:

Press the remote holder firmly to the surface for 30 seconds.

Wait 1 hour to use.

FCC

This device complies with Part 15 of the FCC Rules. Operation is subject to the following two conditions: (1) this device may not cause harmful interference, and (2) this device must accept any interference received, including interference that may cause undesired operation.

Changes or modifications to this unit not expressly approved by the party responsible for compliance could void the user's authority to operate the equipment.

NOTE: This equipment has been tested and found to comply with the limits for a Class B digital device, pursuant to Part 15 of the FCC Rules. These limits are designed to provide reasonable protection against harmful interference in a residential installation. This equipment generates uses and can radiate radio frequency energy and, if not installed and used in accordance with the instructions, may cause harmful interference to radio communications.

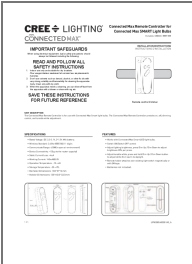
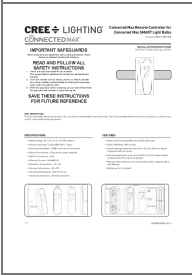
However, there is no guarantee that interference will not occur in a particular installation. If this equipment does cause harmful interference to radio or television reception, which can be determined by turning the equipment off and on, the user is encouraged to try to correct the interference by one or more of the following measures:

- Reorient or relocate the receiving antenna.
- Increase the separation between the equipment and receiver.
- Connect the equipment into an outlet on a circuit different from that to which the receiver is connected.
- Consult the dealer or an experienced radio/TV technician for help.

This device contains license-exempt transmitter(s)/receiver(s) that comply with Innovation, Science, and Economic Development Canada's license-exempt RSS(s). Operation is subject to the following two conditions:

- (1) This device may not cause interference.
- (2) This device must accept any interference, including interference that may cause undesired operation of the device.

Documents / Resources

	<p>CREE LIGHTING CMACC-RMT-WH Connected Max Remote Controller for Connected Max SMART Light Bulbs [pdf] Instruction Manual</p> <p>CMACCRMT, 2ACQ6-CMACCRMT, 2ACQ6CMACCRMT, CMACC-RMT-WH Connected Max Remote Controller for Connected Max SMART Light Bulbs, Connected Max SMART Light Bulbs</p>
	<p>CREE LIGHTING CMACC-RMT-WH Connected Max Remote Controller [pdf] Instruction Manual</p> <p>CMACC-RMT-WH Connected Max Remote Controller, CMACC-RMT-WH, Connected Max Remote Controller, Remote Controller</p>