




## Creative Stage V2 2.1 Soundbar with Subwoofer User Guide

[Home](#) » [Creative](#) » Creative Stage V2 2.1 Soundbar with Subwoofer User Guide 

# CREATIVE

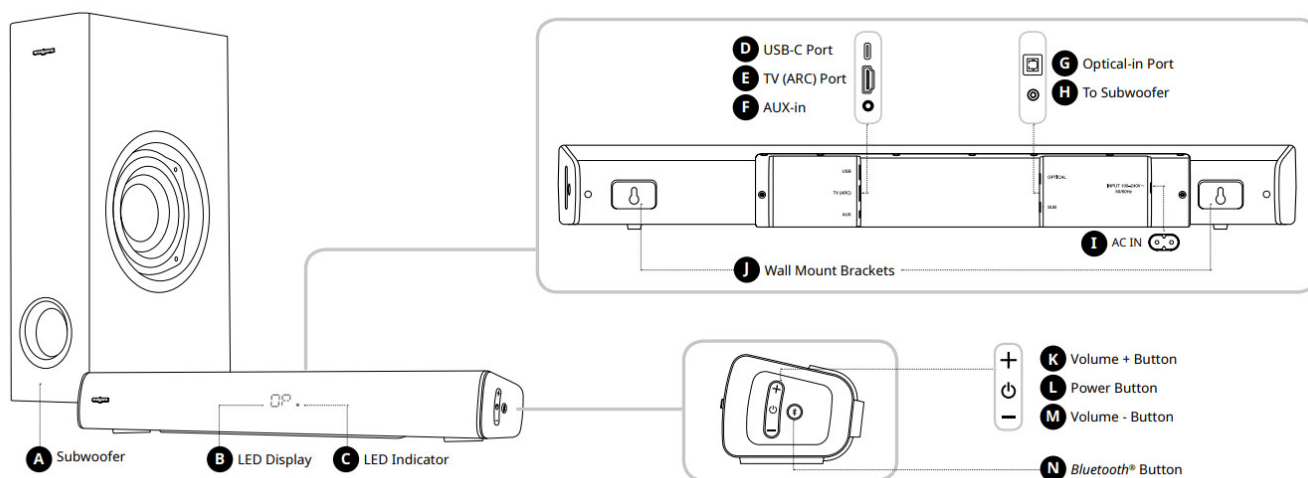
Stage V2 2.1 Soundbar with Subwoofer  
User Guide



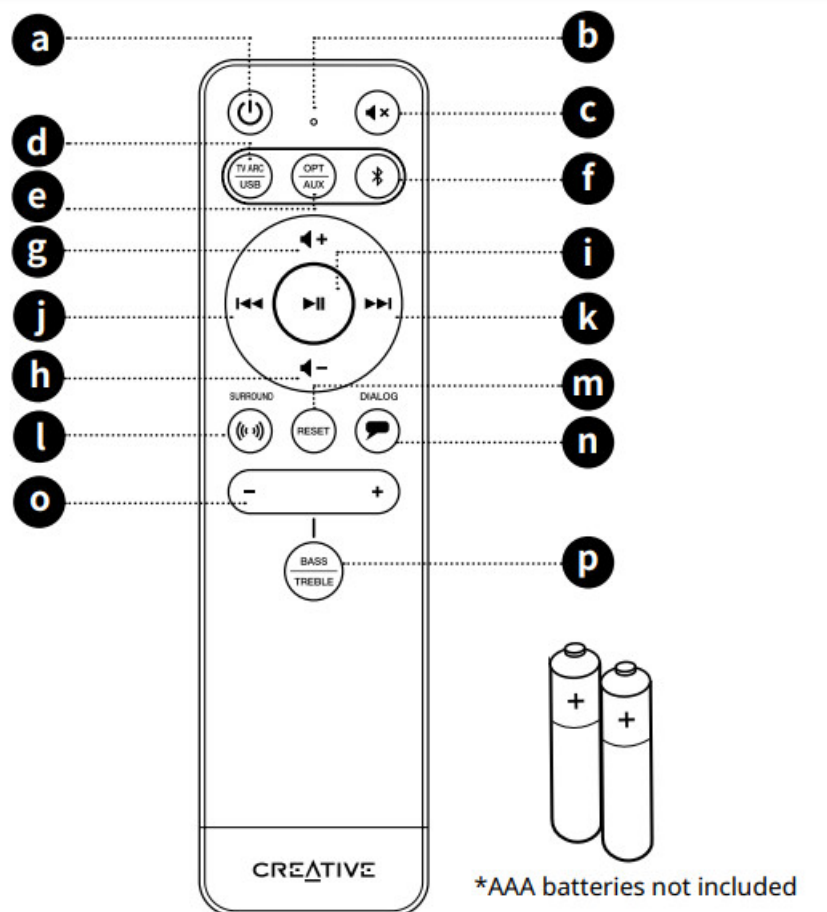
## Contents

- 1 Overview
- 2 IR Remote Control
- 3 Source Selection and Display
- 4 Bluetooth Mode / Power-saving Mode
- 5 TV (ARC) / Optical / AUX Connectivity
- 6 Wall Mount
- 7 Technical Specification
- 8 IMPORTANT REGULATORY SAFETY INSTRUCTIONS
- 9 FOR PRODUCT(S) WITH BUILT-IN POWER SUPPLY
- 10 BATTERIES DIRECTIVE
- 11 Notice for Europe
- 12 FOR PRODUCT(S) WITH BUILT-IN POWER SUPPLY
- 13 Notice for the USA
- 14 Notice for Canada
- 15 European Compliance
- 16 Vietnam RoHS Statement
- 17 Documents / Resources
  - 17.1 References
- 18 Related Posts

## Overview



## IR Remote Control



**a Power Button**

Press and hold 2s to power off the soundbar

**b LED Indicator****c Mute Button**

Press once to mute the volume

Press once again to unmute the volume

**d TV (ARC) Source Button**

Press once to toggle to TV (ARC)-outsource

Press once again to toggle to USB-out source

**e OPT Source Button**

Press once to toggle to Optical-out source

Press once again to toggle to AUX-out source

**f Bluetooth Source Button**

Press once to enter Bluetooth Mode

Press and hold for 2s to enter Bluetooth pairing mode

**g Volume + Button**

Press to increase the volume

**h Volume – Button**

Press to decrease volume

**i Play / Pause Button**

Press once to play

Press once again to pause (App

**j Previous Track Button**

Press once to return to the prev

(Applicable in USB and Bluetoo

**k Next Track Button**

Press once to skip to the next tr

(Applicable in USB and Bluetoo

**l Surround Button**

Press once to turn on Surround

Press once again to turn off Sur

**m Reset Button**

Press to reset all audio settings

**n Clear Dialog Button**

Press once to turn on Clear Dia

Press once again to turn off Cle

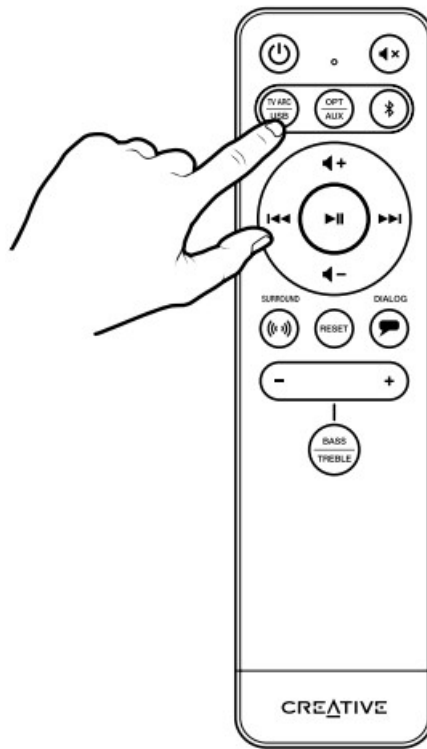
**o Bass / Treble – / + Button**

Press to increase / decrease B&

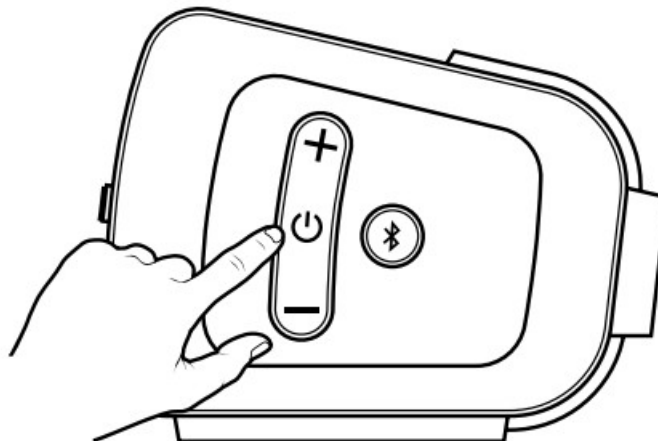
**p Bass Treble Button**

Press to toggle between Bass a

**Source Selection and Display**



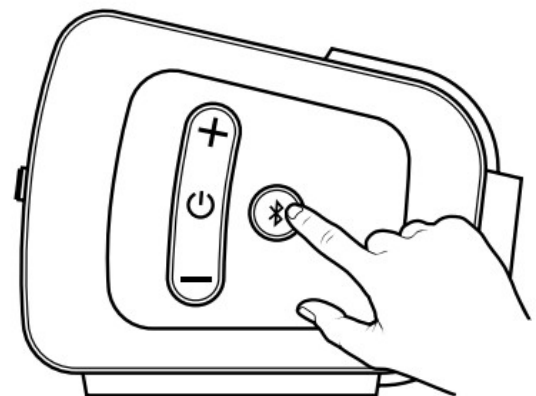
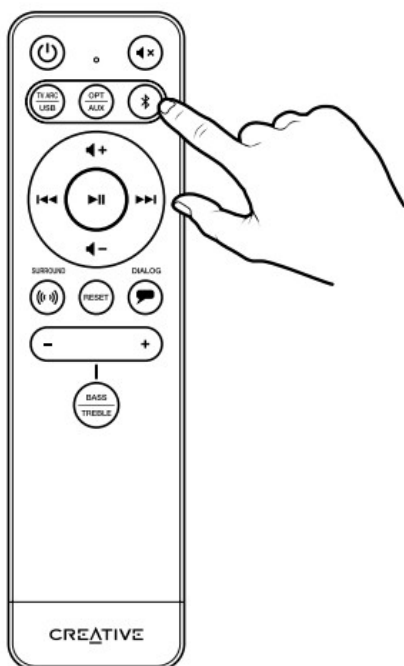
Press the respective buttons on the provided IR remote control to select the preferred audio source.



Alternatively, press once on the soundbar's power button to cycle through sources: Bluetooth > Optical > TV (ARC) > USB Audio > AUX

AU	- AUX-in
	- <i>Bluetooth Mode</i>
OP	- Optical-in
Hd	- TV (ARC) Mode
Ub	- USB Audio Mode
--	- Standby
dL	- Clear Dialog On
OF	- Clear Dialog Off
Sr	- Surround On
OF	- Surround Off
BA	- Bass
Tr	- Treble

### Bluetooth Mode / Power-saving Mode



### Bluetooth Pairing Mode

Press and hold the Bluetooth button on either the soundbar or IR remote control for 2s to enter Bluetooth pairing mode.

Built-in LED will start blinking in blue. Select “Stage V2” from the list of discovered Bluetooth devices to pair. Once paired with a device, the soundbar’s LED will remain blue in a static state.

Creative Stage V2 will automatically connect to the last paired device when in Bluetooth mode. To pair to a new device, press and hold 2s to enter Bluetooth pairing mode again. Press the Bluetooth button once to exit Bluetooth Pairing mode.

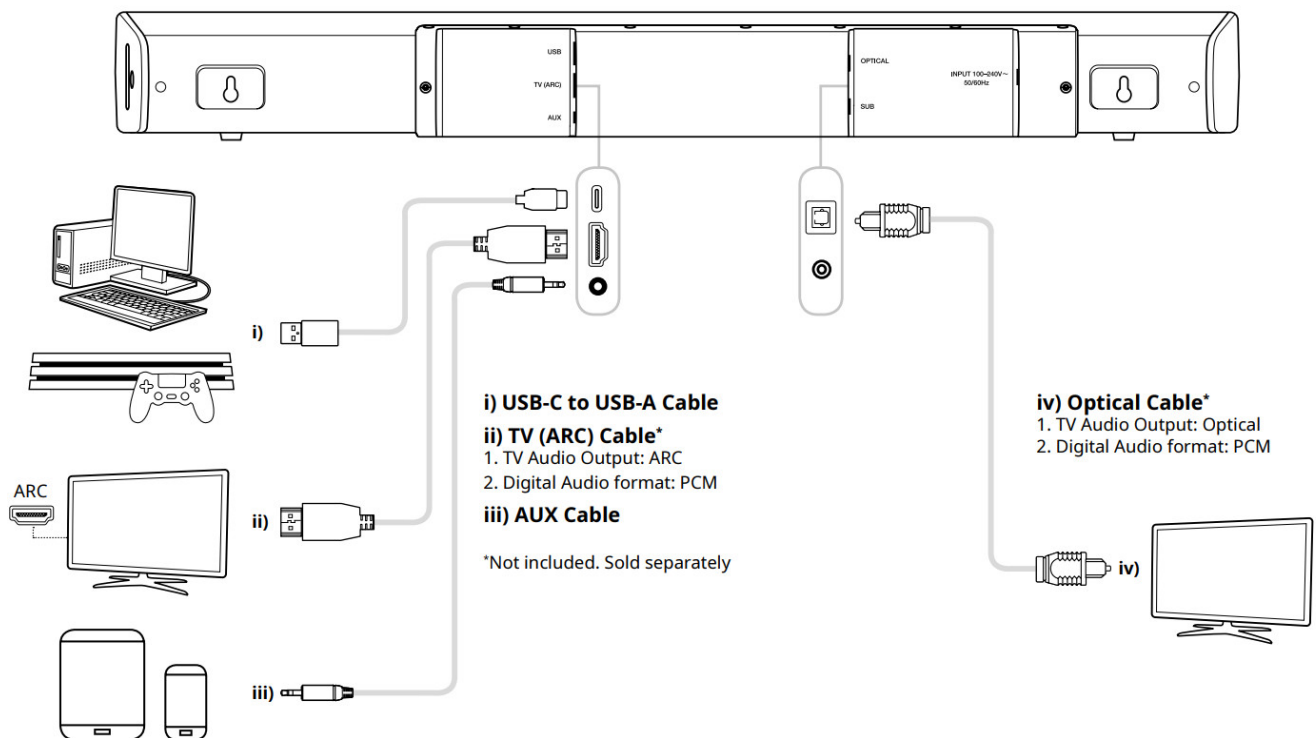
### Clearing Soundbar’s Bluetooth Memory

In Bluetooth mode, press and hold the Bluetooth button on either the soundbar or IR remote control for 8s to clear all previously paired devices. The soundbar will return to Bluetooth mode once completed.

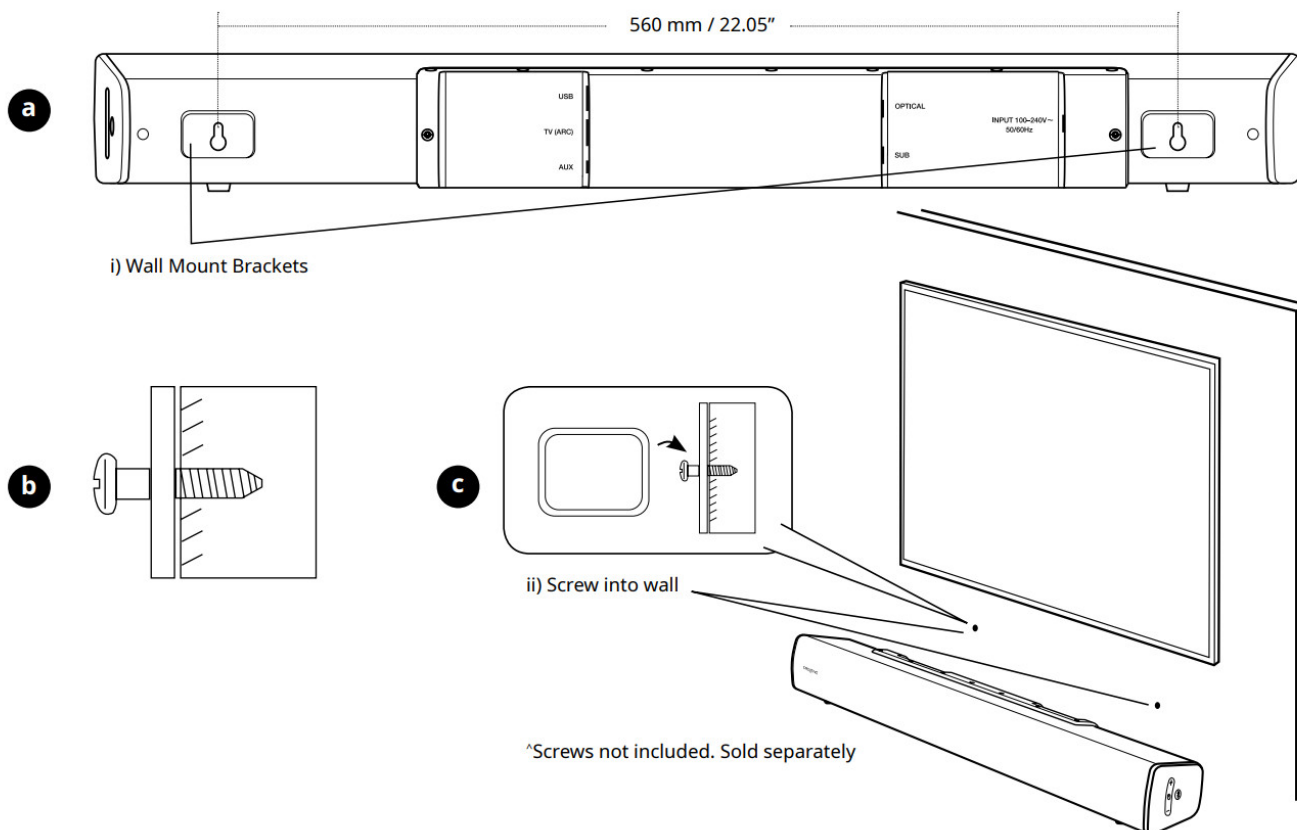
### Power-saving mode

Creative Stage V2 features a power-saving mode that will power off the soundbar after more than 24 hours of inactivity. To activate/deactivate this feature, press and hold the power button for 10s when the soundbar is powered off.

### TV (ARC) / Optical / AUX Connectivity



### Wall Mount



## Technical Specification

**Bluetooth Version:** Bluetooth 5.0

**Operating Frequency:** 2402–2480 MHz

**Operating Range:** Up to 10m / 33 ft, measured in open space. Walls and structures may affect a range of device

**RF Output Power:** < 4 dBm

**Supported Bluetooth Profiles:** A2DP (Wireless Stereo Bluetooth), AVRCP (Bluetooth Remote Control)

Supported Codec: SBC

**Input:** 100–240V ~ 50 / 60 Hz 1.5A

**Speaker Power:** 20W x 2, Satellite, 40W Subwoofer, Peak 160W

**Frequency Response:** 55–20,000 Hz

**SNR:** ≥ 75 dB

**Operating Temperature Range:** 0–45°C

## Other Information

Please visit [creative.com/compliance/Stagev2](http://creative.com/compliance/Stagev2) for the user guide, safety and regulatory information, and ErP information where applicable.

Please visit [creative.com/support/Stagev2](http://creative.com/support/Stagev2) for all other support related to your product.



The use of the WEEE Symbol indicates that this product may not be treated as household waste. By ensuring this product is disposed of correctly, you will help protect the environment. For more detailed information about the recycling of this product, please contact your local authority, your household waste disposal service provider, or the shop where you purchase the product.

Hereby, Creative Labs Pte. Ltd. declares the Bluetooth Speaker, model no. MF8375 is in compliance with Directive 2014/53/EU.

The full text of the EU declaration of conformity is available at <http://www.creative.com/EUDoC>.



# CREATIVE

## Safety and Regulatory information

### IMPORTANT REGULATORY SAFETY INSTRUCTIONS

Use a mains plug/cord that is appropriate for your country or region. DO NOT operate the product with other power sources.

#### Water and Moisture

CAUTION: Do not expose this apparatus to dripping or splashing fluids, and ensure that no objects filled with liquids – such as vases – are placed on the apparatus.

#### Placement

Place the product near a socket outlet, which is easily accessible.

#### Servicing

Do not attempt to service any part of the product yourself as opening or removing covers may expose you to dangerous voltage or other hazards. Refer all servicing to qualified service personnel.

### FOR PRODUCT(S) WITH BUILT-IN POWER SUPPLY

#### Safety Warnings on Bottom or Rear of Product Enclosure



The lightning flash arrowhead within an equilateral triangle is intended to alert the user to the presence of uninsulated, 'dangerous voltage' within the product(s)'s enclosure that may be of sufficient magnitude to constitute a risk of electric shock to persons.



The exclamation point within an equilateral triangle is intended to alert the user to the presence of important operating and maintenance (servicing) instructions in the literature accompanying this product(s).



This Equipment is for in-house use only.



This Equipment is a Class II or double insulated electrical appliance. It has been designed in such a way that it does not require a safety connection to the electrical earth.

Markings on the Power switch. "I" means the product is powered on and "O" means the product is cut off from the mains supply. – Applicable for products with Mains switch.



#### **WARNING** DO NOT OPEN

TO PREVENT THE RISK OF ELECTRIC SHOCK, DO NOT REMOVE PRODUCT(S) COVERS (OR BACKS). NO USER-SERVICEABLE PARTS INSIDE. REFER SERVICING TO QUALIFIED SERVICE PERSONNEL.

TO PREVENT ELECTRIC SHOCK HAZARD, DO NOT CONNECT TO MAINS POWER SUPPLY WHILE GRILLE IS REMOVED. – WHERE APPLICABLE.

TO REDUCE THE RISK OF FIRE OR ELECTRIC SHOCK, DO NOT EXPOSE THIS APPARATUS TO RAIN OR MOISTURE.

For product(s) with grounding-type plug, it shall be connected to a mains socket with a protective earthing connection. For the detachable power cordset, the mains plug and appliance coupler used as the disconnecting device shall remain readily operable. For a non-detachable power cordset, the main plug used as the disconnecting device shall remain readily operable. Where an all-pole mains switch is used as the disconnect device, it shall remain readily operable.

#### Additional guidelines for wireless devices

- The short wave radio frequency signals of a wireless device may impair the operation of other electronic and medical devices.
- Switch off the device where it is prohibited. Do not use the device in medical facilities, aircraft, refueling points, or close to automatic doors, automatic fire alarms, or other automatically controlled devices.
- Keep this device at least 20 cm from pacemakers and other medical devices. Radio waves may impair the operation of pacemakers and other medical devices.

#### **For models with embedded battery**

- Do not attempt to remove the embedded battery.

The product must be disposed of according to local environmental regulations. To replace the battery, return your product to your regional support office. For product service information, go to [www.creative.com](http://www.creative.com).

- Do not expose yourself to excessive heat such as sunshine, fire, or the like.

**CAUTION:** Risk of explosion if the battery is replaced by incorrect types. Replace only with the same or equivalent type.

#### **For models with removable batteries**

- The battery must be recycled or disposed of properly. Contact local agencies for recycling and disposal information.
- Do not allow metal objects to touch the terminals of your battery.
- If there is leakage, an offensive odor, discoloration, or deformation during charging or use, remove the battery and do not use it again.
- Clean your hands well before touching food or sensitive areas, for example, your eyes.
- Do not expose yourself to excessive heat such as sunshine, fire, or the like.
- Remove the batteries when not in use for an extended period of time.
- The following statement only applies to products containing “CR” type lithium coin cells:

**Perchlorate Material special handling may apply to see** [www.dtsc.ca.gov/hazardouswaste/perchlorate](http://www.dtsc.ca.gov/hazardouswaste/perchlorate)

**CAUTION:** Risk of explosion if the battery is replaced by incorrect types. Replace only with the same or equivalent type.



#### **WARNING**

#### **DO NOT INGEST BATTERY, CHEMICAL BURN HAZARD**

The remote control supplied with this product contains a coin/button cell battery.

If the coin/button cell battery is swallowed. It can cause severe internal burns in just 2 hours and can lead to death. Keep new and used batteries away from children. If the battery compartment does not close securely, stop using the product and keep it away from children. If you think batteries might have been swallowed or placed inside any part of the body, seek immediate medical attention.

#### **For models with headphones output**



#### **Earphones**

Do not listen to audio on your earbuds or headphones at high volume for prolonged periods of time as hearing loss may result. Do not listen to your audio device at high volume when driving, cycling, or crossing the road, especially in heavy traffic or any other traffic condition where such use will hinder safe travel on the roads. We recommend that consumers be extremely cautious when using this device on the road.



### Waste Electrical and Electronic Equipment (WEEE) Symbol

The use of the WEEE Symbol indicates that this product may not be treated as household waste. By ensuring this product is disposed of correctly, you will help protect the environment. For more detailed information about the recycling of this product, please contact your local authority, your household waste disposal service provider, or the shop where you purchased the product.

## BATTERIES DIRECTIVE



### FOR REMOVABLE BATTERY (Li-ion/polymer, button/coin cells, cylindrical cells)

This product contains one or more of the above removable batteries. The crossed-out wheeled bin symbol indicates that the battery in this product should not be treated as unsorted municipal waste upon reaching its end of life. Instead, it should be taken to separate collection and recycling schemes. Batteries containing heavy metal content will have a two-letter symbol for the chemical under the crossed-out wheeled bin symbol. 'Cd' stands for cadmium, 'Pb' for lead, and 'Hg' for mercury. You can help the environment and avoid public health hazards by recycling the battery at an authorized recycling facility or the place of purchase. To find the nearest authorized recycle centre contact your local authority. Instructions for removing the battery can be found in the product user manual. The instructions should be followed carefully before attempting to remove the battery.

### FOR INTEGRATED BATTERY

This product contains a Lithium-ion/polymer battery that should only be removed by an authorized recycling center. By recycling this product at your local authorized recycling center or the place of purchase, the battery will be removed and recycled separately.

## Notice for Europe

### SAFETY & REGULATORY INFORMATION

**CAUTION:** This product is intended for use with FCC/CE-certified computer equipment.

Please check the equipment operating/installation manual and/or with the equipment manufacturer to verify/confirm if your equipment is suitable prior to the installation or use of the product.

#### European Compliance

This product complies with all applicable directives, a copy of the EU DoC is available on the creative website.

**CAUTION:** To comply with the Europe CE requirement, this device must be installed with CE-certified computer equipment which meets Class B limits.

All cables used to connect this device must be shielded, grounded, and no longer than 3m in length. Operation with non-certified computers or incorrect cables may result in interference to other devices or undesired effects on the product.

**MODIFICATION:** Any changes or modifications not expressly approved by Creative Technology Limited or one of its affiliated companies could void the user's warranty and guarantee rights.

## Notice for Singapore

(Applicable for wireless products)

Complies with  
IMDA Standards  
DA107311

Complies with  
IMDA Standards  
DB00148

## FOR PRODUCT(S) WITH BUILT-IN POWER SUPPLY

## Important Safety Instructions

1. Read these instructions.
2. Keep these instructions.
3. Heed all warnings.
4. Follow all instructions.
5. Do not use this apparatus near water.
6. Clean only with a dry cloth.
7. Do not block any ventilation openings. Install in accordance with the manufacturer's instructions.
8. Do not install near any heat sources such as radiators, heat registers, stoves, or other apparatus (including amplifiers) that produce heat.
9. Do not defeat the safety purpose of the polarized or grounding-type plug. A polarized plug has two blades one wider than the other. A grounding-type plug has two blades and a third grounding prong. The wide blade or the third prong is provided for your safety. If the provided plug does not fit into your outlet, consult an electrician for replacement of the obsolete outlet.
10. Protect the power cord from being walked on or pinched particularly at plugs, convenience receptacles, and the point where they exit from the apparatus.
11. Only use attachments/accessories specified by the manufacturer.
12. Use only with the cart, stand, tripod, bracket, or table specified by the manufacturer, or sold with the apparatus.  
When a cart is used, use caution when moving the cart/apparatus combination to avoid injury from tip-over.
13. Unplug this apparatus during lightning storms or when unused for long periods of time.
14. Refer all servicing to qualified service personnel. Servicing is required when the apparatus has been damaged in any way, such as power-supply cord or plug is damaged, liquid has been spilled or objects have fallen into the apparatus, the apparatus has been exposed to rain or moisture, does not operate normally, or has been dropped.
15. No naked flame sources, such as lighted candles, should be placed on the apparatus."
16. The ventilation and ports should not be impeded by covering the ventilation openings with items, such as newspapers, table-cloths, curtains, etc



### **Creative Stage V2 (Model No: MF8375)**

Read this instruction carefully and completely before using the product. Refer to the following information to use your product safely, and to reduce the chance of electric shock, short-circuiting, damage, fire, hearing impairment or other hazards. Improper handling may void the warranty for your product. For more information, read the warranty available with your product.

- Always keep the product dry and do not expose it to extreme temperatures (hairdryer, heater, extended exposure to sunlight, etc.) to avoid corrosion or deformation.
- Do not expose your product to water and moisture. If your product is moisture-resistant, take care not to immerse it in water or expose it to rain.

- Charge products with built-in rechargeable batteries at ambient temperatures between 10 and 40°C/50 and 104°F
- When not using the product for extended periods of time, charge its built-in rechargeable battery regularly (about every 3 months).
- Disposal of a battery into fire or a hot oven, or mechanically crushing or cutting of a battery, can result in an explosion
- Leaving a battery in an extremely high temperature surrounding environment can result in an explosion or the leakage of flammable liquid or gas
- A battery subjected to the extremely low air pressure may result in an explosion or the leakage of flammable liquid or gas
- Use only attachments/accessories/spare parts supplied or recommended by Creative
- Do not insert the earphones too deep into your ears and never insert them without ear adapters. Always remove the earphones slowly and carefully from your ears.
- Clean the product only with a soft, dry cloth.
- Do not dismantle or attempt to repair your product.
- Do not pierce, crush, or set fire to your product
- Keep your product away from strong magnetic objects
- Keep the product, accessories, and packaging parts out of reach of children and pets to prevent accidents. Swallowing and choking hazard.

### **Warning on Choking Hazard**

This product and its accessories may contain small parts which must be kept away from children.

### **WARNING**

CHOKING HAZARD-Small Parts

Not for children under 3yrs.

The following sections contain notices for various countries

### **CAUTION:**

This product is intended for use with FCC/CE-certified computer equipment. Please check the equipment operating/installation manual and/or with the equipment manufacturer to verify/confirm if your equipment is suitable prior to the installation or use of the product.

### **Notice for the USA**

#### **Federal Communication Commission (FCC) Interference Statement**

**FCC Part 15:** This equipment has been tested and found to comply with the limits for a Class B digital device, pursuant to Part 15 of the FCC Rules. These limits are designed to provide reasonable protection against harmful interference in a residential installation. This equipment generates, uses, and can radiate radio frequency energy and, if not installed and used in accordance with instructions, may cause harmful interference to radio communications. However, there is no guarantee that interference will not occur in a particular installation. If this equipment does cause harmful interference to radio or television reception, which can be determined by turning the equipment off and on, the user is encouraged to try to correct the interference by one or more of the following measures:

- Reorient or relocate the receiving antenna.
- Increase the separation between the equipment and receiver.

- Connect the equipment to an outlet on a circuit different from that to which the receiver is connected.
- Consult the dealer or an experienced radio/TV technician for help.

This device complies with part 15 of the FCC Rules. Operation is subjected to the following two conditions:

1. This device may not cause harmful interference, and
2. This device must accept any interference received, including interference that may cause undesired operation.

**CAUTION:** To comply with the limits of the Class B digital device, pursuant to Part 15 of the FCC Rules, this device must be installed with computer equipment certified to comply with Class B limits.

All cables used to connect to the computer and peripherals must be shielded and grounded. Operation with non-certified computers or non-shielded cables may result in interference to radio or television reception.

**MODIFICATION:** Any changes or modifications not expressly approved by the grantee of this device could void the user's authority to operate the device.

#### **Federal Communication Commission (FCC) Radiation Exposure Statement**

This equipment complies with FCC radiation exposure limits set forth for an uncontrolled environment.

This equipment should be installed and operated with a minimum distance of 20cm between the radiator and your body. This transmitter must not be co-located or operating in conjunction with any other antenna or transmitter.

#### **Notice for Canada**

This device contains license-exempt transmitter(s)/receiver(s) that comply with Innovation, Science, and Economic Development Canada's license-exempt RSS(s). Operation is subject to the following two conditions:

1. This device may not cause interference.
2. This device must accept any interference, including interference that may cause undesired operation of the device.

To comply with RSS 102 RF exposure compliance requirements, a separation distance of at least 20cm must be maintained between the antenna of this device and all persons.

**MODIFICATION:** Any changes or modifications not expressly approved by the grantee of this device could void the user's authority to operate the device.

#### **SUPPLIER'S DECLARATION OF CONFORMITY**

According to CFR Title 47 §2.1077

Importer's Name:	Creative Labs, Inc.
Importer's Address:	1901 McCarthy Boulevard Milpitas, CA. 95035 Tel: (408)428-6600

1901 McCarthy Boulevard  
Milpitas, CA. 95035  
Tel: (408)428-6600

declares under its sole responsibility that the product

Trade Name:	Creative
Model Numbers:	MF8375
Product Name:	Creative Stage V2

**has been tested according to the FCC / CISPR22 requirement for Class B devices and found compliant with the following standards:**

**EMI/EMC: ANSI C63.4 & C63.10, FCC Part 15 Subpart B & C Complies with Canadian ICES-003 Class B & RSS-247 standards**

This device complies with part 15 of the FCC Rules.  
Operation is subject to the following two conditions:

1. This device may not cause harmful interference, and
2. this device must accept any interference received, including interference that may cause undesirable operation.

Supplementary Information:	Thinh Bui Compliance Manager Creative Labs, Inc. 1st Oct 2020
----------------------------	--

## European Compliance

This product complies with all applicable directives. A copy of the EU DoC is available on the Creative website.

**CAUTION:** To comply with the Europe CE requirement, this device must be installed with CE-certified computer equipment which meets Class B limits.

All cables used to connect this device must be shielded, grounded, and no longer than 3m in length.

Operation with non-certified computers or incorrect cables may result in interference to other devices or undesired effects on the product.

**MODIFICATION:** Any changes or modifications not expressly approved by Creative Technology Limited or one of its affiliated companies could void the user's warranty and guarantee rights.

The insulating coating on the device also serves the purpose of ESD protection.

## Vietnam RoHS Statement

This product is in compliance with Circular 30/2011/TTBCT of the Ministry of Trade of the Socialist Republic of Vietnam ("Circular"), it does not contain the following substances in a concentration greater than the Maximum Limit value as specified in the Circular.

Substance	Maximum Limit (ppm) 1, 2
lead	1000
mercury	1000
cadmium	100
hexavalent chromium	1000
polybrominated biphenyls (PBB)	1000
polybrominated diphenyl ethers (PBDE)	1000

1 Maximum Limit does not apply to applications exempted from the Circular.

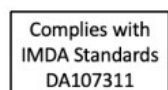
2 Maximum Limit refers to concentration by weight in homogeneous materials.



**Notice for Australia**



**Notice for Malaysia**



**Notice for Singapore**

© 2020 Creative Technology Ltd. All rights reserved. Creative and the Creative logo are trademarks or registered trademarks of Creative Technology

Ltd in the United States and/or other countries. The Bluetooth® word mark and logo are owned by the Bluetooth SIG, Inc. and any use of such marks by Creative Technology Ltd is under license. All other trademarks are the property of their respective owners and are hereby recognized as such. All specifications are subject to change without notice. The actual product may differ slightly from the images shown. Use of this product is subject to a limited warranty.

Creative StageV2 (MF8375) Additional Safety and Regulatory information

## Documents / Resources

	<a href="#">Creative Stage V2 2.1 Soundbar with Subwoofer</a> [pdf] User Guide MF8375, 2AJIV-MF8375, 2AJIVMF8375, Soundbar with Subwoofer, Stage V2, Soundbar with Subwoofer, Subwoofer
--	--

## References

- [Creative Worldwide SupportCreative Stage V2](#)
- [Creative Technology - Declaration of Conformity](#)
- [Creative Worldwide Support - Creative Stage V2](#)
- [Creative Worldwide Support](#)
- [dtsc.ca.gov/](#)
- [dtsc.ca.gov/hazardouswaste/](#)
- [dtsc.ca.gov/hazardouswaste/perchlorate](#)