

CREATIVE SB1870 Upgradable Hi-Res 5.1 PCI-E Sound Card With Smartcomms Kit User Guide

[Home](#) » [Creative](#) » CREATIVE SB1870 Upgradable Hi-Res 5.1 PCI-E Sound Card With Smartcomms Kit User Guide 

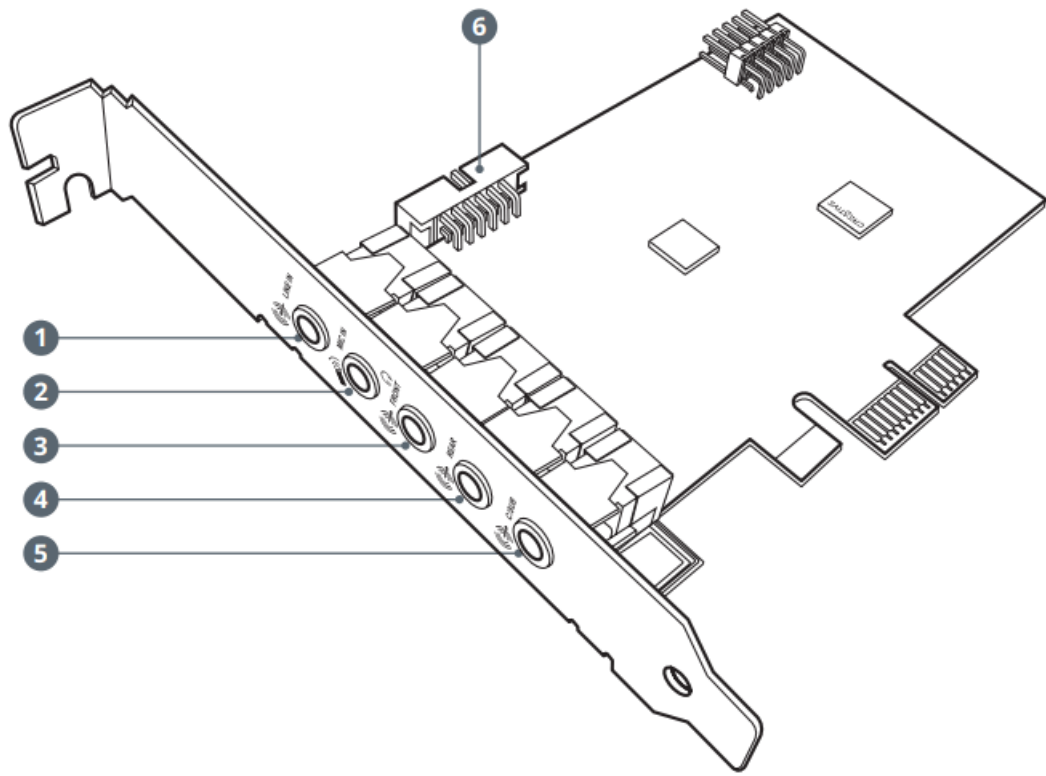
CREATIVE[®] Sound[™]BLASTER[®] AUDIGY Fx v2

UPGRADABLE HI-RES 5.1
PCI-E SOUND CARD WITH
SMARTCOMMS KIT
Model No.: SB1870
QUICK START GUIDE

Contents

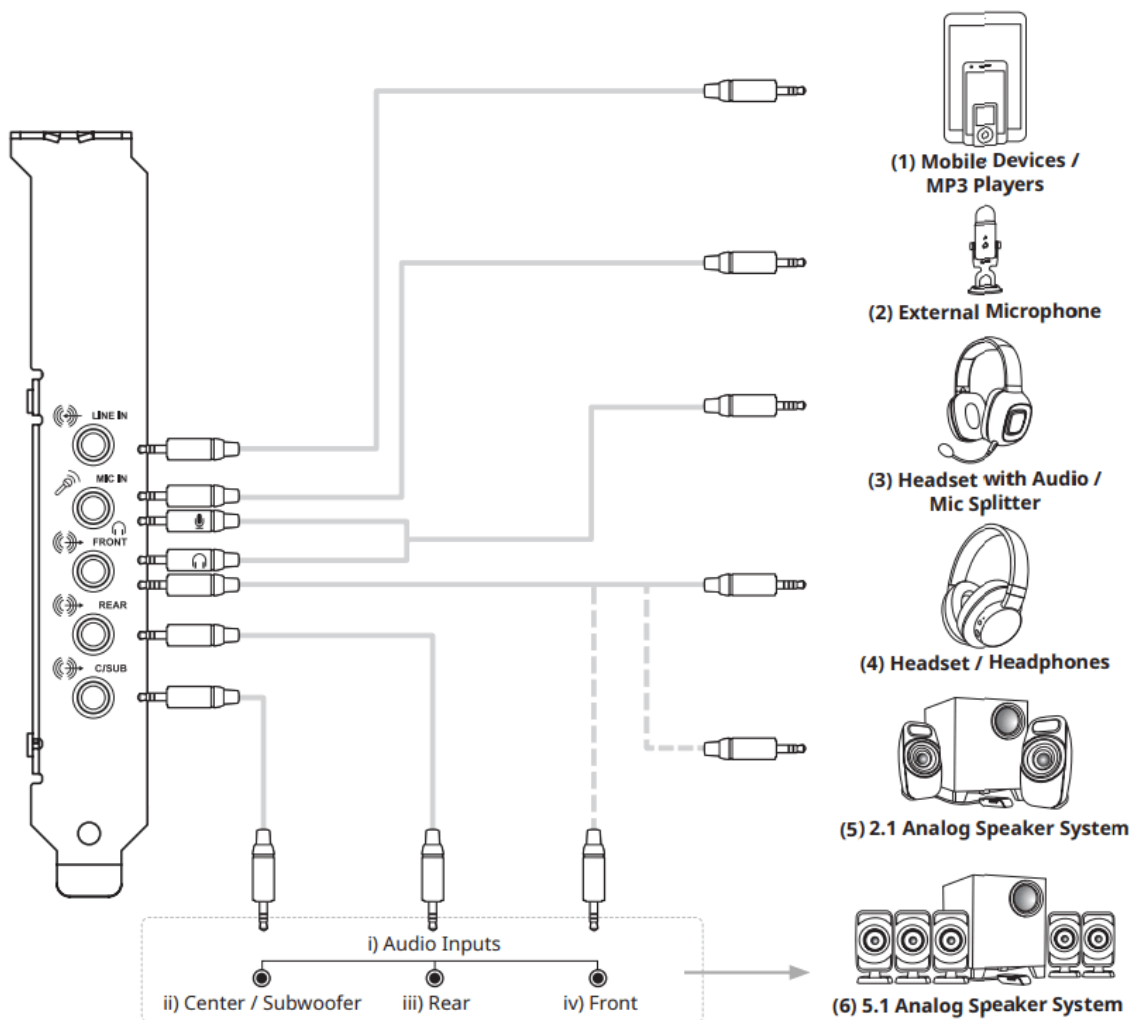
- [1 OVERVIEW](#)
- [2 CONNECTIVITY](#)
- [3 INSTALLATION](#)
- [4 CREATIVE APP](#)
- [5 OTHER INFORMATION](#)
- [6 Documents / Resources](#)
 - [6.1 References](#)
- [7 Related Posts](#)

OVERVIEW

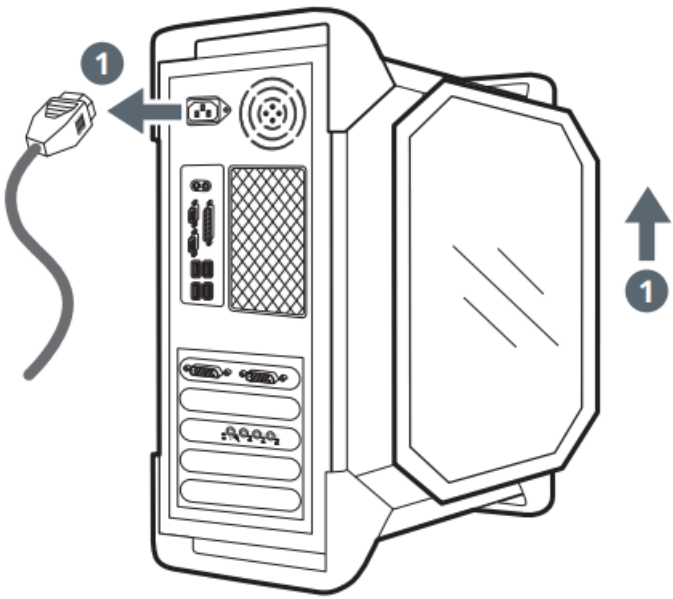
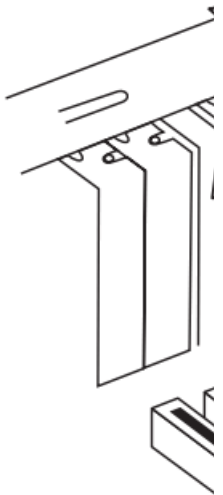


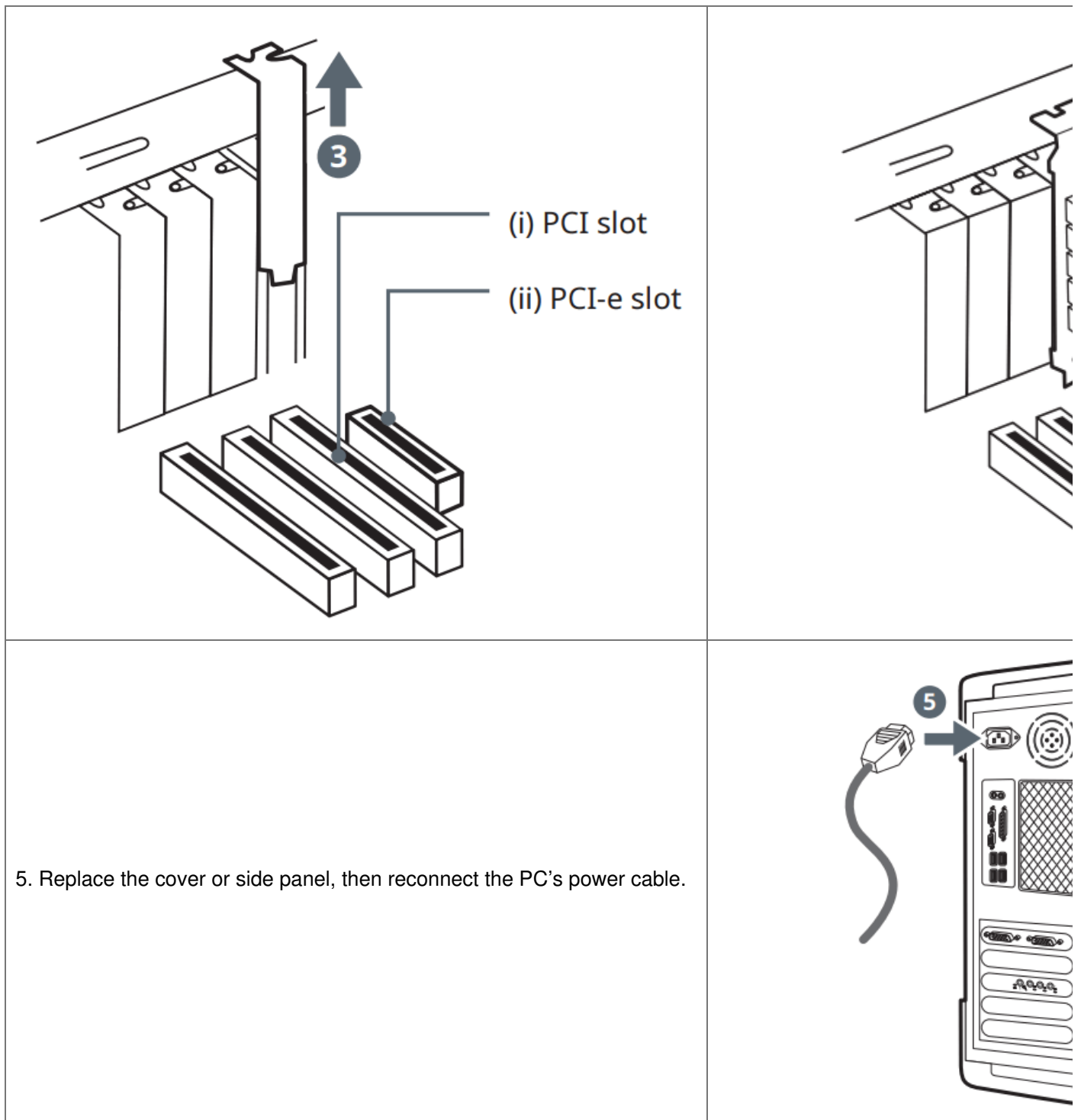
1. Line-in port
2. Mic-in port
3. Headphone / Front (L / R) port
4. Rear (L / R) port
5. Center / Subwoofer port
6. DBPro Connector (2×6 pin)

CONNECTIVITY



INSTALLATION

1. Remove power cable from the PC, then remove its cover or side panel.	2. If there is an existing sound card slot PC.
	
3. Remove the metal bracket from a preferred PCI-e slot in the PC.	4. Gently but firmly slot the Sound Blaster X-Fi 5.1 Pro HD into the PCI-e slot.



CREATIVE APP



With the Creative app, you can:

- Access and control our all-new SmartComms Kit's suite of smart communication features such as VoiceDetect, NoiseClean-in, and NoiseClean-out to improve your online communication experience
- Personalize audio effects with Sound Blaster Acoustic Engine's sound mode features such as Surround, Bass, Crystalizer, Smart Volume, and Dialog Plus
- Experience professionally-tuned audio presets for movies, music, and games
- Set up speakers and headphones' configurations
- Adjust playback and recording settings

OTHER INFORMATION

Please visit creative.com/compliance/SBFxV2 for user guide and safety and regulatory information.

PRODUCT REGISTRATION

Registering your product ensures you receive the most appropriate service and product support available. You can register your product within the Creative app or at creative.com/register.

Waste Electrical and Electronic Equipment (WEEE) Symbol

The use of the WEEE Symbol indicates that this product may not be treated as household waste. By ensuring this product is disposed of correctly, you will help protect the environment. For more detailed information about the recycling of this product, please contact your local authority, your household waste disposal service provider or the shop where you purchased the product.

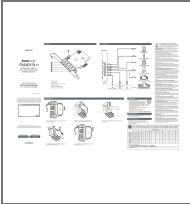
REGISTER YOUR PRODUCT	TECHNICAL SUPPORT
creative.com/register	creative.com/support

Serial Numbe

Dealer Chop

Please put your dealer chop on this space for the customer.

© 2021 Creative Technology Ltd. All rights reserved. Creative, the Creative logo, Blaster, Sound Blaster, the Sound Blaster logo, Audigy and CrystalVoice are trademarks or registered trademarks of Creative Technology Ltd. in the United States and/or other countries. Windows is a registered trademark of Microsoft Corporation in the United States and other countries. All other trademarks are properties of their respective owners. Use of this product is subject to a limited hardware warranty. All specifications are subject to change without prior notice.

	<p>CREATIVE SB1870 Upgradable Hi-Res 5.1 PCI-E Sound Card With Smartcomms Kit [pdf]</p> <p>User Guide</p> <p>SB1870 Upgradable Hi-Res 5.1 PCI-E Sound Card With Smartcomms Kit, SB1870, Upgradable Hi-Res 5.1 PCI-E Sound Card With Smartcomms Kit, Hi-Res 5.1 PCI-E Sound Card With Smartcomms Kit, PCI-E Sound Card With Smartcomms Kit, Smartcomms Kit, Kit</p>
--	--

References

- [△ Creative Worldwide Support - Sound Blaster Audigy Fx V2](#)