



# CREATIVE SB1550 HI-RES 7.1 PCI-E Sound Card with Dual Mic Inputs User Guide

[Home](#) » [Creative](#) » CREATIVE SB1550 HI-RES 7.1 PCI-E Sound Card with Dual Mic Inputs User Guide 

## CREATIVE® SoundBLASTER AUDIGY Rx™ HI-RES 7.1 PCI-E SOUND CARD WITH DUAL MIC INPUTS QUICK START GUIDE Model No. SB1550

### Contents

- 1 SB1550 HI-RES 7.1 PCI-E Sound Card with Dual Mic Inputs
- 2 OVERVIEW
- 3 CONNECTIVITY
- 4 INSTALLATION
- 5 SOFTWARE DOWNLOADS
- 6 OTHER INFORMATION
- 7 PRODUCT REGISTRATION
- 8 Documents / Resources
  - 8.1 References

### SB1550 HI-RES 7.1 PCI-E Sound Card with Dual Mic Inputs

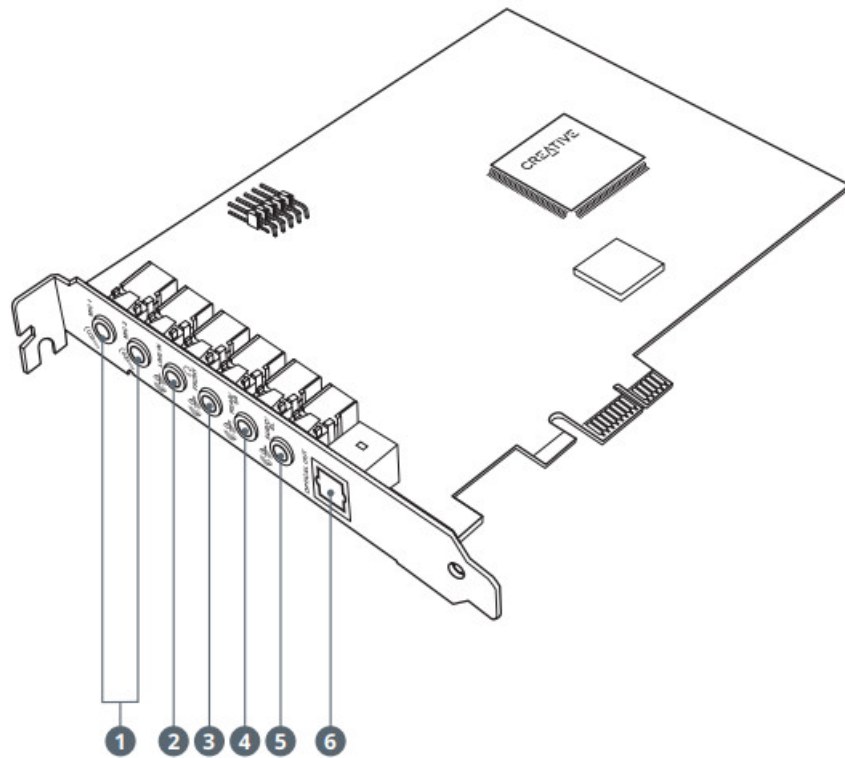
#### Waste Electrical and Electronic Equipment (WEEE) Symbol



The use of the WEEE Symbol indicates that this product may not be treated as household waste. By ensuring this product is disposed of correctly, you will help protect the environment.

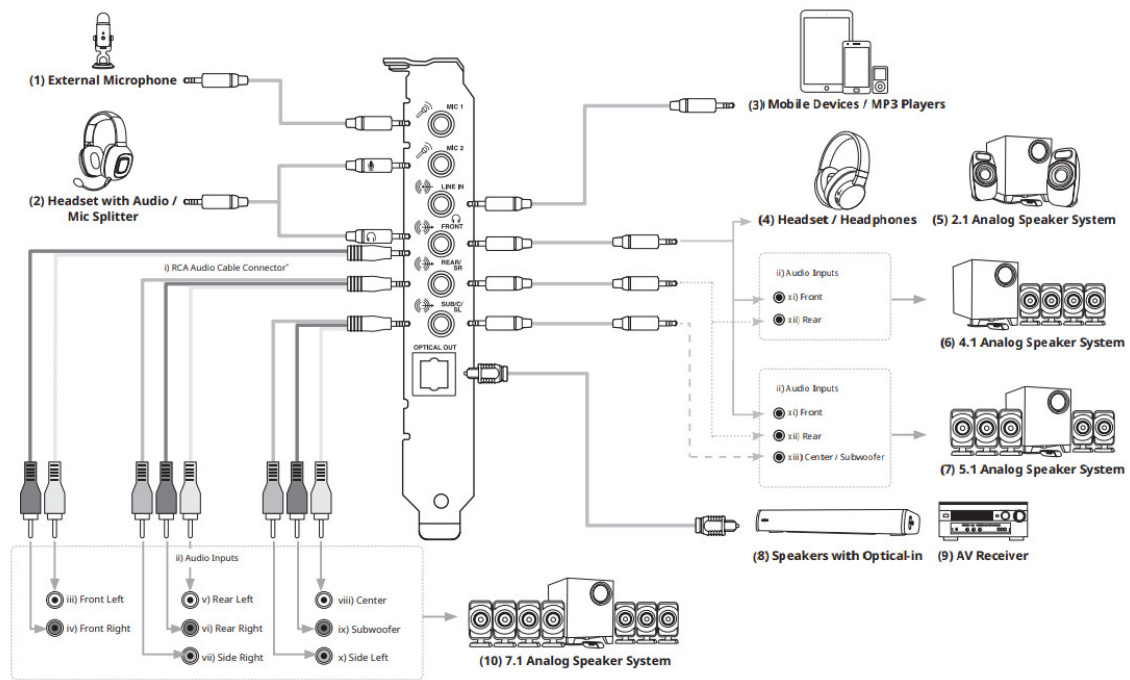
For more detailed information about the recycling of this product, please contact your local authority, your household waste disposal service provider or the shop where you purchased the product.

## OVERVIEW



1. Microphone-in port
2. Line-in port
3. Front-out / Headphone-out port
4. Rear-out / Side Right port
5. Center / Subwoofer / Side Left port
6. Optical-out port

## CONNECTIVITY

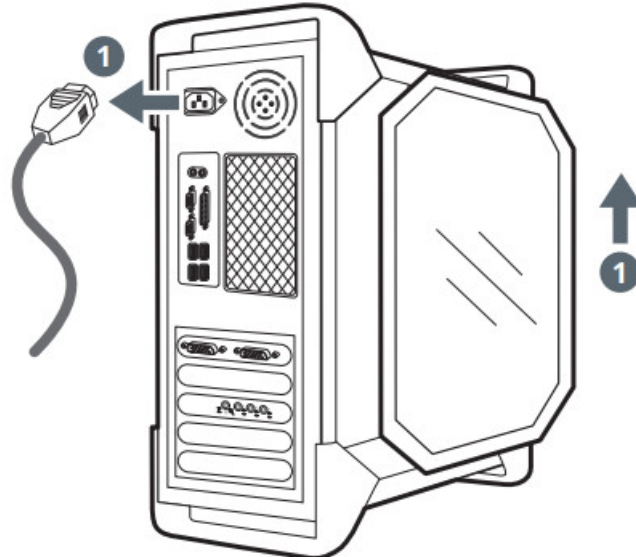


## 7.1 ANALOG SPEAKER SYSTEM SETUP

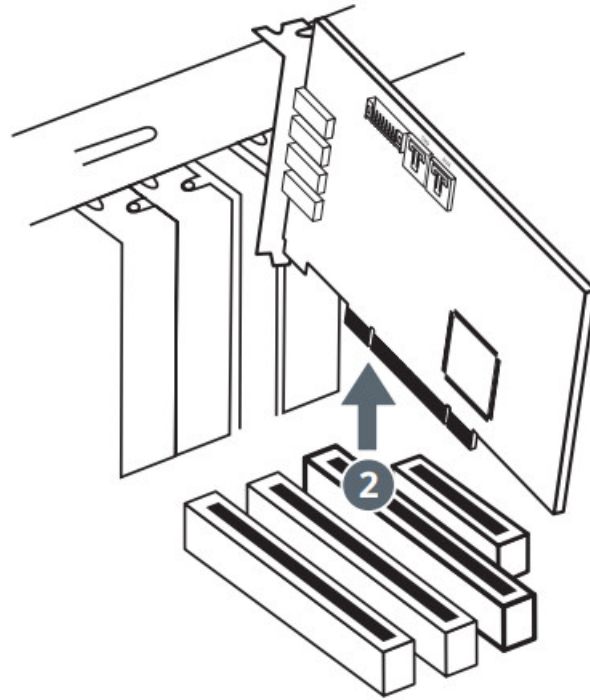
To learn more about setting up a 7.1 analog speaker system with Sound Blaster Audigy Rx, please visit [creative.com/support/SBRx](http://creative.com/support/SBRx).

## INSTALLATION

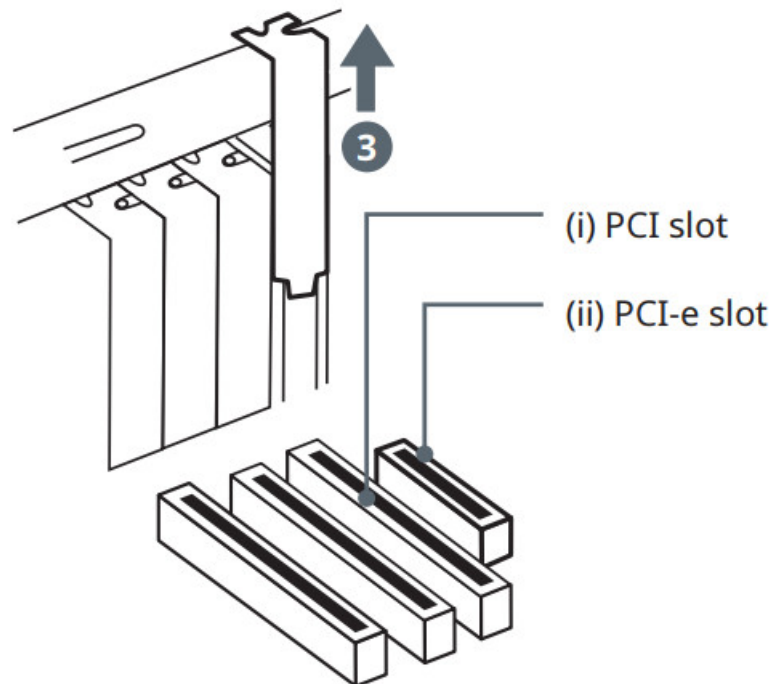
1. Remove power cable from the PC, then remove its cover or side panel.



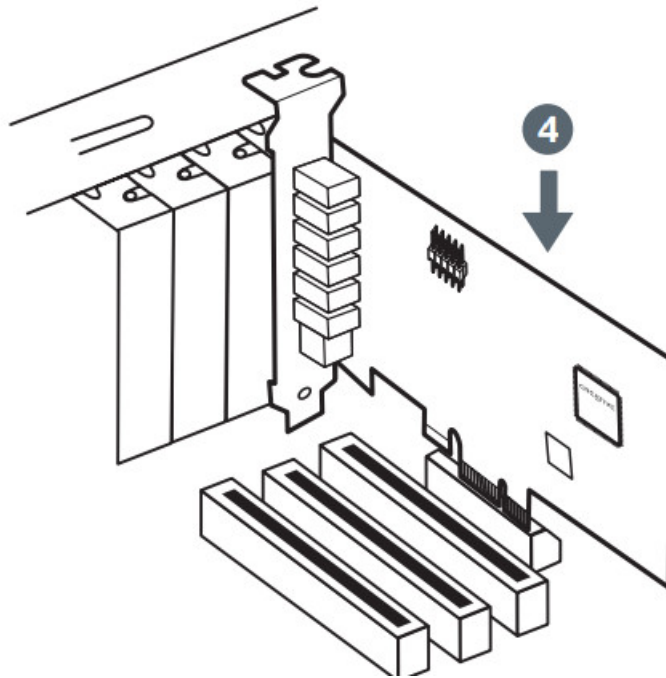
2. If there is an existing sound card slotted in a PCI / PCI-e slot, remove it from the PC.



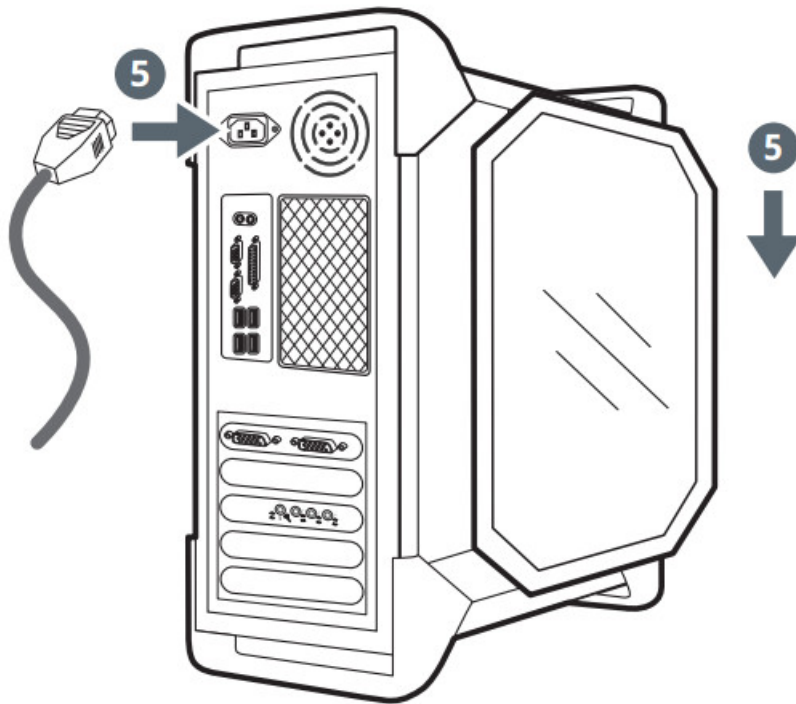
3. Remove the metal bracket from a preferred PCI-e slot in the PC.



4. Gently but firmly slot the Sound Blaster Audigy Rx sound card into the PCI-e slot.



5. Replace the cover or side panel, then reconnect the PC's power cable.

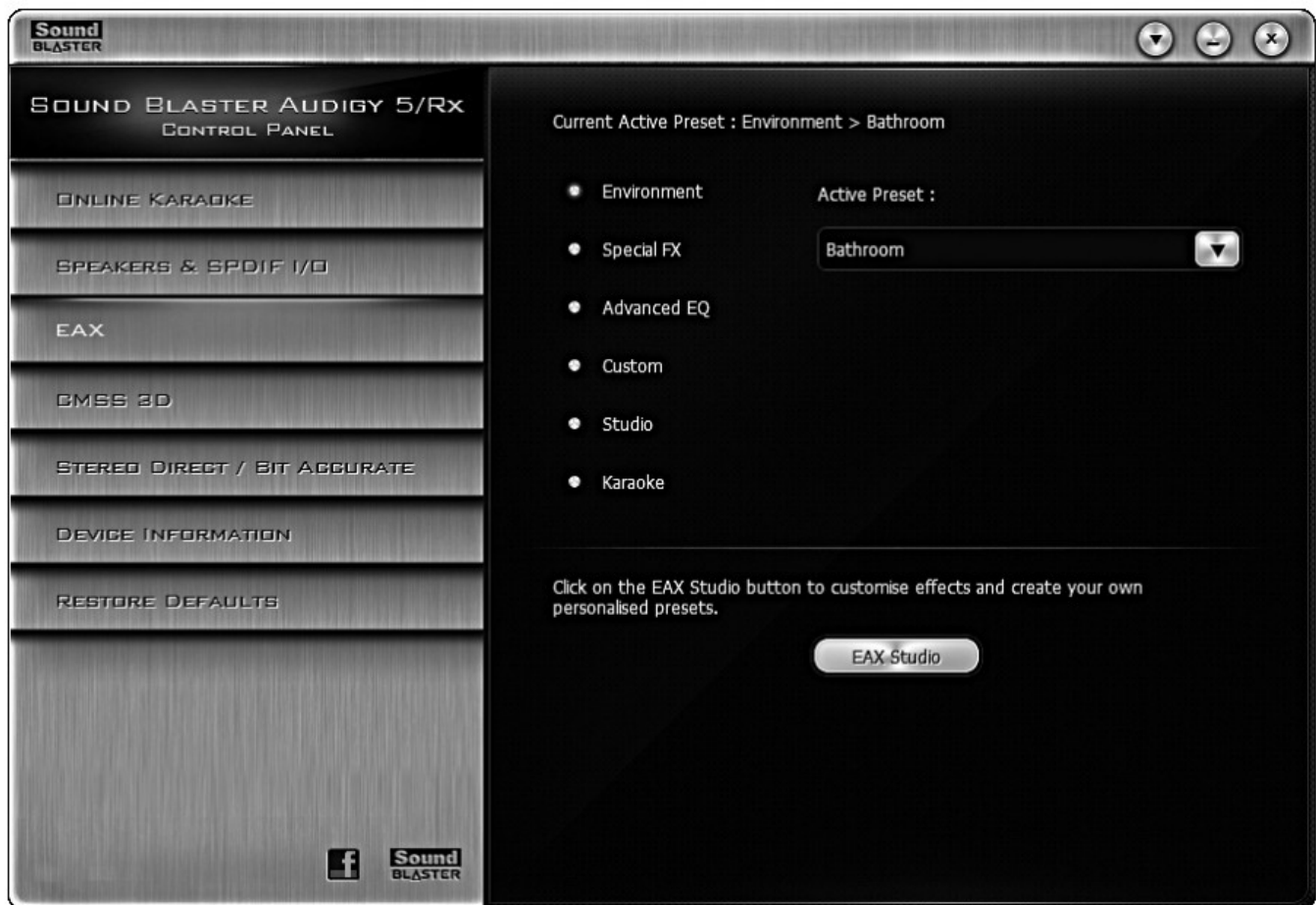


## SOFTWARE DOWNLOADS

### Sound Blaster Audigy Rx Control Panel

The Sound Blaster Audigy Rx Control Panel offers a simple-to-use interface for easy navigation of functions such as mic-monitoring and stereo mixing, reverb and pitch shift effects, as well as switching between modes for singing and chatting.

Visit [creative.com/support/SBRx](http://creative.com/support/SBRx) to download.



Using Sing and Chat modes

Refer to the “Online Karaoke” tab on the software’s side menu for more information.

- Sing Mode – Select this for an online karaoke singing session.
- Chat Mode – Select this to chat in the online karaoke room.

When selected, the mode’s effects will be applied in real time.

#### **Listening to audio in multi-channel surround**

Stereo WMA, CD music, and other digital audio may be played back through the two front speakers in a multi-channel speaker system. With Creative Multi Speaker Surround Sound, (CMSS® ) you can enjoy stereo music and movies in captivating surround sound\*. CMSS has the ability to deliver rich 3D virtual surround sound via headphones or a 2-speaker system, and multi-channel audio playback with 4.1, 5.1, or 7.1 speaker systems. You can, however, choose to “upmix” the audio so that it is heard from all your surround speakers (if available). To upmix audio to all your surround speakers:

1. Click Start > Programs / All Programs > Creative > Sound Blaster Audigy 5\_Audigy Rx > Sound Blaster Audigy 5\_Rx Control Panel
2. Click on the CMSS 3D option to enable CMSS 3D Surround
3. Select CMSS or Stereo Surround \*

Stereo surround is available on multi-channel speakers only. Stereo Surround duplicates the front channel audio to all surround speakers without the use of any artificial enhancements.

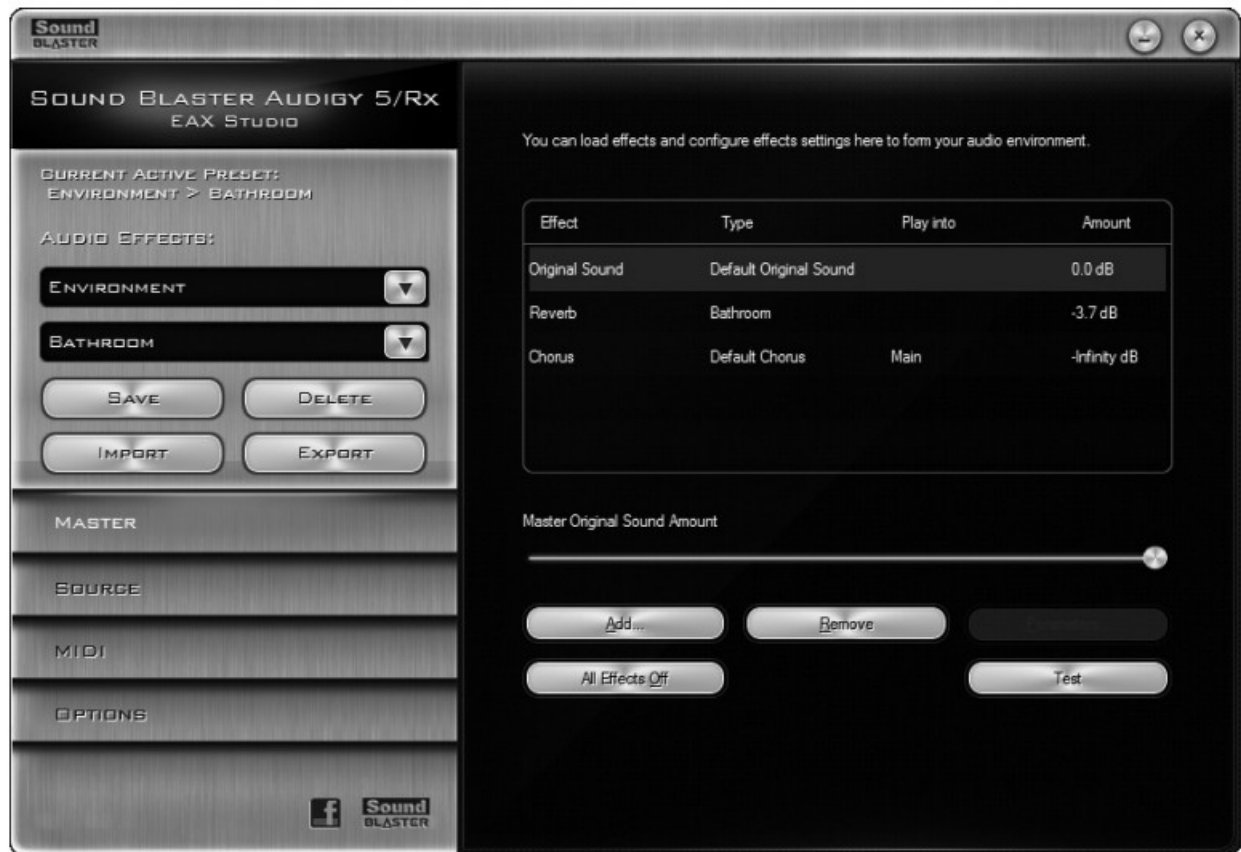
#### **Applying Hardware Microphone Effects**

Enable hardware microphone effects with Karaoke presets available under the EAX tab. To further finetune the effects applied, simply adjust the level on the EAX tab.

#### **Sound Blaster Audigy Rx EAX Studio**

Sound Blaster Audigy Rx EAX Studio offers dramatically enhanced 3D audio performance and functionality,

delivering superior audio fidelity and fully customizable environmental effects with import and export functions, for an unsurpassed karaoke experience.



## OTHER INFORMATION

Please visit [creative.com/compliance/SBRx](https://creative.com/compliance/SBRx) for user guide and safety and regulatory information.

## PRODUCT REGISTRATION

Registering your product ensures you receive the most appropriate service and product support available. You can register your product within the Creative app or at [creative.com/register](https://creative.com/register).

### REGISTER PRODUCT YOUR

[creative.com/register](https://creative.com/register)

### TECHNICAL

[creative.com/support](https://creative.com/support)

### Serial Numbe

Dealer Chop please put your dealer chop on this space for the customer.

© Copyright 2021 Creative Technology Ltd. Sound Blaster and Blaster are registered trademarks, the Sound Blaster logo, Creative Inspire, Creative I-Trigue, and Creative Multi Speaker Surround are trademarks of Creative Technology Ltd. in the United States and/or other countries. Microsoft, and Windows are registered trademarks of Microsoft Corporation. All rights reserved. All other products are trademarks or registered trademarks of their respective owners.

# CREATIVE®

**Documents / Resources**



**[CREATIVE SB1550 HI-RES 7.1 PCI-E Sound Card with Dual Mic Inputs](#)** [pdf] User Guide  
SB1550 HI-RES 7.1 PCI-E Sound Card with Dual Mic Inputs, SB1550, HI-RES 7.1 PCI-E Sound Card with Dual Mic Inputs, PCI-E Sound Card, Sound Card, Card

## References

- [△ Creative Labs \(United States\) | Sound Blaster Sound Cards, Super X-Fi, Speakers and Soundbars, Webcams, Headphones and Gaming Headsets](#)
- [△ Creative Worldwide SupportSound Blaster Audigy Rx](#)
- [△ Creative Technology - Online Product Registration](#)
- [△ Creative Worldwide Support](#)
- [△ Creative Worldwide Support](#)
- [△ Creative Worldwide Support - Sound Blaster Audigy Rx](#)