

[Skip to content](#)

Manuals+

User Manuals Simplified.

CREATE Espresso Coffee Machine User Manual

[Home](#) » [CREATE](#) » CREATE Espresso Coffee Machine User Manual



CREATE

THERA ADVANCE

BY IKOHS



ESPRESSO COFFEE MACHINE CAFETERA ESPRESSO USER MANUAL

Thank you for choosing our coffee machine. Before using the appliance, and to ensure the best use, carefully read these instructions.

The safety precautions enclosed herein reduce the risk of death, injury, and electrical shock when correctly adhered to. Keep the manual in a safe place for future reference, along with the completed warranty card, purchase receipt, and package. If applicable, pass these instructions on to the next owner of the appliance. Always follow basic safety precautions and accident-prevention measures when using an electrical appliance. We assume no liability for customers failing to comply with these requirements.

Contents [hide](#)

[1 IMPORTANT SAFEGUARDS](#)

[2 CONTROL PANEL](#)

[3 OPERATION INSTRUCTIONS](#)

[4 CLEANING AND MAINTENANCE](#)

[5 CLEANING MINERAL DEPOSITS](#)

[6 TROUBLESHOOTING](#)

[7 Documents / Resources](#)

[8 Related Posts](#)

IMPORTANT SAFEGUARDS

When using any electrical appliance, basic safety precautions should always be observed.

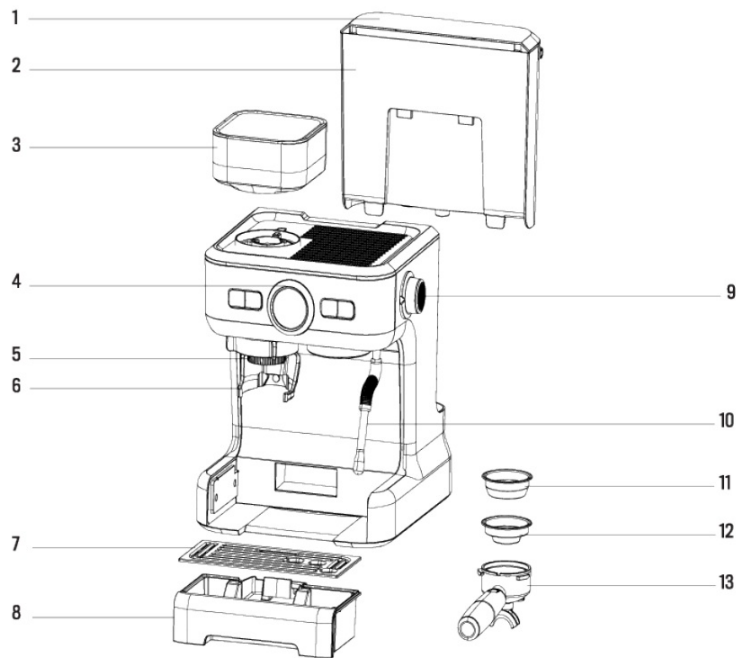
- Before using check that the voltage of the wall outlet corresponds to the rated voltage marked on the rating plate.
- This appliance has been incorporated with a grounded plug. Please ensure the wall outlet in your house is well earthed.
- To protect against fire, electric shock, and injury to persons do not immerse cord or plug in water or other liquid.
- Remove plug from the wall outlet before cleaning and when not in use. Allow appliance cool down completely before taking off, attaching components, or before cleaning.
- Do not operate any appliance with a damaged cord or plug or after the appliance malfunctions, or is dropped or damaged in any manner, return the appliance to the nearest authorized service facility for examination, repair, or electrical or mechanical adjustment.
- The use of accessory attachments not recommended by the appliance manufacturer may result in fire, electric shock, or injury to persons.
- Place appliance on a flat surface, do not hang power cord over the edge of table or counter.
- Ensure the power cord does not touch the hot surface of the appliance.
- Do not place the coffee maker on a hot surface or beside the fire in order to avoid being damaged.
- To disconnect, remove the plug from the wall outlet Always hold the plug. But never put the cord.
- Do not use appliances other than intended use and place it in a dry environment.
- Close supervision is necessary when your appliance is being used near children.
- Be careful not to get burned by the steam.
- Do not touch the hot surface of the appliance. Use handle or knobs.
- Do not let the coffee maker operate without water.
- Do not remove the metal filter holder when the appliance is brewing coffee or when releasing steam.
- Connect the plug to wall outlet before using and turn any switch off before plug is removed from the wall outlet
- This appliance can be used by children aged 8 years and above and persons with reduced physical, sensory or mental capabilities or lack of experience and knowledge if they have been given supervision or instruction concerning the use of the appliance in a safe way and understand the hazards involved. Children shall not play with the ap Cleaning and user maintenance shall not be made by children unless they are older than 8 and supervised.
- Children should be supervised to ensure that they do not play with the appliance.
- Operating or storing environment temperature shall be more than 0 °C.
- This appliance is intended to be used in household and similar applications such as staff kitchen areas in shops, offices, and other working environments; farm houses; by clients in hotels, motels, and other residential type environments; bed and breakfast type environments.

- Do not use outdoors and save these instructions.
- If you do not use the product for a long time, you need to turn on the power and then release steam for 3 minutes before storing it.

Warning:

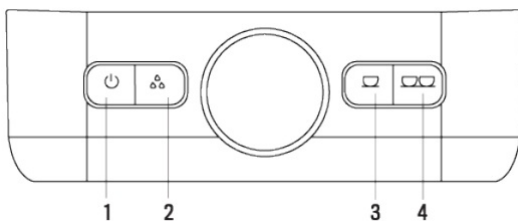
- To prevent hot steam and hot water from scalding your skin or causing another personal injury, and also to prevent damage to the product, do not remove the water tank or filter holder assembly when you use this coffee machine to brew coffee or froth milk. Before removing the filter holder assembly to brew another cup of coffee, make sure the coffee machine is in standby condition. If you want to add more water into the water tank, press the power button, and the four indicators will extinguish to ensure that the power of the product is in off condition.
- Do not touch the top cover of the machine after the machine has been working for a long time so as to prevent burns.

PARTS LIST



1. Water tank cover
2. Water tank
3. Coffee bean container
4. Pressure gauge
5. Grinder
6. Filter holder bracket
7. Drip tray lid
8. Drip tray
9. Steam knob
10. Steam wand
11. 2-cup filter
12. 1-cup filter
13. Filter holder

CONTROL PANEL



Each button has a Light indicator around, and there is a triangular light indicator on the ring of the steam knob on the right side of the machine.

- **Preheating:** Press the Power button once, the machine enters the preheating state, and the four indicators flash white in the form of a breathing lamp. The machine needs around 50 seconds to preheat.
- **Standby:** After the machine is preheated, it enters the standby state. The four indicators are always illuminated white.
- **Make hot water:** In the standby state, press the Hot water button once to enter the hot water function. At this time, the Power button indicator becomes constant white, the hot water indicator flashes white in the form of a breathing lamp and Single cup and Double cup indicators extinguish. Press the Hot water button again and the hot water function stops. The machine then enters the standby state.
- **Brew a single cup of coffee:** In the standby state, press the Single cup button once to enter the function of brewing a single cup of coffee. At this time, the Power button indicator is always white, the single-cup indicator flashes white in the form of a breathing lamp, and the hot water indicator and double cup indicator go out. Pressing the Single cup button once again or waiting for the end of the single-cup function, the machine enters the standby state.
- **Brew a double cup of coffee:** In the standby state, press the Double cup button once to enter the function of brewing a double cup of coffee. At this time, the Power button indicator is always white, the double cup indicator light flashes white in the form of a breathing lamp, and the hot water indicator and single-cup indicator go out. Pressing the Double cup button again or waiting for the end of the double cup function, the machine enters the standby state.

HOW TO MAKE STEAM

- **Steam preheating:** In the standby state, turn the Steam knob to the preheating position. At this time, the Power indicator is always white, the Hot water, Single-cup, and Double cup indicators are off and the Steam indicator (triangle) flashes white. At this time, the steam function is preheating and the steam indicator is always white.
- **Steam making:** When the steam is preheated, turn the steam knob to the Max position. At this time, the Power indicator is always white, the Hot water, Single-cup, and Double cup indicators are off and the steam indicator flashes white in the form of a breathing lamp. While the steam function is in progress, turn the Steam knob to the preheating position again and the steam indicator returns to the normal white. When the steam function is finished, put the Steam knob to the "off" position, the machine enters a cooling state and the steam indicator is extinguished. Until the machine is cooled down completely, the machine enters the standby state.

HOW TO GRIND COFFEE BEANS

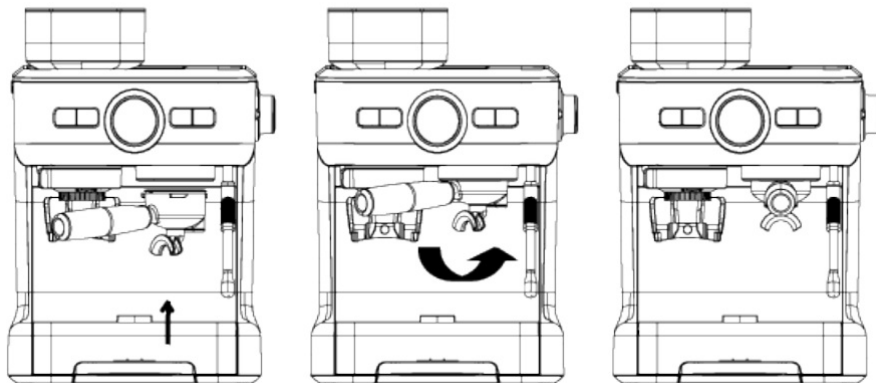
- Press the Power button and the grinding indicator will be lighted white indicating that the unit enters the grinding beans preparation state. At this time, attach the pressurized filter holder into the filter holder bracket and push it forwards to grind coffee beans. During the grinding process, the grinding indicator flashes white. When the grinder is not fit in place, the grinding indicator flashes red. At this time, the coffee beans can not be ground until the grinder is fit in place.

SLEEP MODE

- When the machine is not operating for 30 minutes in the standby state, it will automatically enter the sleep state. At this time, the three indicators except the Power button indicator are off. The Power button indicator flashes red twice and the buzzer rings two times. Pressing any button in the sleep mode activates the machine to re-enter the preheating state.

BEFORE FIRST USE

1. Check and ensure all accessories are not broken.
2. Fill the water tank with water.
3. Insert pressurized filter holder into filter holder snap position of the machine, turn it anticlockwise to lock tightly.



4. Place a container on the drip tray lid and connect the machine to a power source. The steam knob shall be in an off position. Press the Power button and the machine enters the preheating state. After finishing preheating, the machine enters the standby
5. Press the Hot water button to dispense proper hot water, then press the Hot water button to stop this function, press the Single or Double cup button to clean the tubing system of the machine.
6. Clean all detachable parts with warm water.

CHOOSE APPROPRIATE GROUND COFFEE

- The coffee should be freshly ground and subjected to deep roasting. You may need to use French or Italian roasted coffee powder for espresso. The pre-ground coffee powder can only remain scented for 7 to 8 days unless it is stored in a sealed container and placed in a cool place. Do not store coffee in the refrigerator or freezer. It is recommended to grind all coffee beans into powder before use. The fragrance of the coffee beans stored in the sealed container can be maintained for 4 weeks.
- If you are grinding coffee beans for yourself, this is a key step in the espresso-making process and requires more practice. The coffee beans must be finely ground, and the adjustment knob can adjust the coarseness and fineness of ground coffee. The preset intermediate grind setting is optimal when the machine leaves the factory. When coffee ground by cutting blade becomes coarser during use, the adjustment knob can be properly rotated to make the ground coffee finer.
- The ground coffee should look like salt.
- If the powder is too fine, even if it is tamped it may cause the coffee to flow out inter This ground coffee feels like flour.
- If the powder is too thick, the water will flow too fast, which will hinder the extraction of its rich aroma.
- In order to get a uniform, consistent coffee, be sure to use a high-quality coffee grinder.

OPERATION INSTRUCTIONS

1. Fill the water tank with water. The water level can't exceed the MAX line.
2. Connect the machine to a power source and press the Power button (steam knob needs to be turned off). The machine will start to preheat, the indicator will flash until the machine finishes preheating and then the power indicator becomes always on, and it enters the standby state.
3. **Grinding coffee beans:** Press the Power button, attach the grinder to the unit. The grinding indicator is lighted white. Fill the bean container with appropriate coffee beans, turn the adjustment knob to the proper setting, then attach the pressurized filter holder into the filter holder bracket and slightly push it forwards to grind coffee beans until the desired amount of ground coffee is reached.

Tip 1: It is recommended to grind at settings 8-10 to make a delicious coffee. The continuous working time of the grinder should not be more than 1min each time.

Tip 2: If the pressure gauge indicates too low pressure during brewing, you can turn the grind knob to a finer setting and then try to grind the beans to brew the coffee.

Tip 3: If the pressure gauge indicates too high pressure during brewing so that coffee can't be brewed or coffee is over-extracted, you can turn the grind knob to a coarser setting, and try to grind beans to brew coffee.

4. **Making hot water** Press the Hot water button and the indicator flashes in the form of a breathing light. Hot water flows out from the hot water pipe, after dispensing 200 ml hot water, the machine automatically stops and returns to standby mode. To stop the hot water function anytime, press the Hot water button again.
5. **Brewing a single cup of coffee:** Attach the 1-cup filter to the filter holder, load 13-15 grams of coffee powder into the filter using a tamper, and press the coffee powder with a force of 10-15 kg. Then align the filter holder assembly with the filter holder bracket buckle position and turn it counterclockwise into the filter holder bracket, put a coffee cup on the drip tray lid under the filter holder. Press the Single cup button in the standby state, the Single cup button indicator flashes in the form of a breathing light; the machine starts to brew coffee, and the pressure gauge will display pressure parameters in the brewing process when the coffee is finished, the pressure gauge is reset, all indicators on the panel are solid on, and the machine restores to the standby mode.
6. **Brewing a double cup of coffee:** Attach the 2-cup filter to the filter holder, load 20-22 grams of coffee powder into the filter using a tamper, and press the coffee powder with a force of 10-15 kg. Then align the filter holder assembly with the filter holder bracket buckle position and turn it counterclockwise into the filter holder bracket. Put a coffee cup on the drip tray lid under the filter holder. Press the Double cup button in the standby state, the Double cup button indicator flashes in the form of a breathing light. The machine starts to brew coffee, and the pressure gauge will display pressure parameters in the brewing process. When the coffee is finished, the pressure gauge is reset, all indicators on the panel are solid on, and the machine restores to standby mode.

Recommendation: To make delicious hot espresso, we recommend that you preheat the appliance before making the coffee, including the filter holder, filter, and cup, so that the coffee will not be affected by the cold appliance.

7. **Producing steam to froth milk:** Turn the steam knob from off to preheat position. At this time, the machine starts steam preheating, and the steam indicator flashes. When reaching steam preheating temperature, the indicator keeps constantly on. Turn the steam knob from preheating to Max position, the machine starts to produce steam, the steam indicator flashes in the form of a breathing light during the production of steam. To stop the steam function, turn the steam knob from MAX to preheat position to stop producing steam. Turn the steam knob from preheating to off position, the steam indicator light will go off, the machine will cool down and, when all indicators on the panel become constantly on, the machine enters the standby mode.

Recommendation: The machine needs 1 minute to rest after producing steam for 10 minutes, so as to prevent the machine from overheating.

Warning: When the machine is cooling down, the relief port in the drip tray will release some steam, please don't touch it.

8. **Cup volume adjustment** Press and hold the Single cup button and the Double cup button at the same time. The machine enters the customized cup volume status (single indicator

and double indicator flash at the same time). Press the Single button at this time (single indicator flashes, the double indicator illuminates) to memorize single-cup volume while dispensing hot water. Press the Single-cup button again (single indicator illuminates) to stop dispensing water and finish memorizing. After the memorization is completed, the machine resumes customized cup volume status. Set double cup volume using the same method as above. For a single cup, the amount of water should be 20 – 60 ml, the double cup should be 60 – 100 ml.

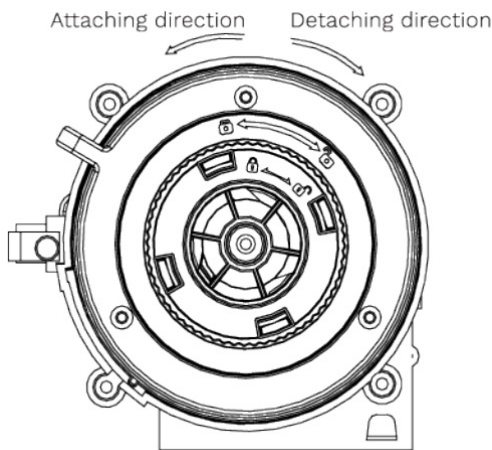
Note:

1. The Steam knob must be in an off position during preheating when brewing coffee or making hot water. Single-cup or double cup coffee can be brewed only after finishing preheating.
2. You can press the Single or Double button to stop during coffee brewing.
3. When the water tank lacks water (less than MIN level), the unit will sound an alarm and the indicator will flash. After refilling water, it will turn to normal condition.
4. If you want to return the cup volume to the default factory setting, just press and hold the corresponding cup button for 5 seconds while the button indicator flashes twice.
5. After finishing frothing milk, the steam pipe should be wiped with a moist cloth in time, and the steam shall be produced for a length of time to prevent the milk from clogging the steam nozzle. In the case of steam pipe blockage, a clean needle can be used to dredge the steam pipe hole.
6. After finishing making steam, hot water, and brewing coffee functions cannot be performed during the machine cooling stage until it enters the standby mode.
7. When the red float of the drip tray rises above the drip tray lid, it means that the drip tray is near full water, please pour water out in time.

CLEANING AND MAINTENANCE

The grinder of this coffee machine is detachable:

- **Detaching method:** Align the bump position of the grinder with the slot position of the unit, attach the grinder into the unit vertically. Turn the adjustment knob to the finest setting and turn the grinder in the attaching direction until a click sound is heard.
- **Attaching method:** Press the release button, turn the adjustment knob to the maximum setting, and then turn it in the detaching direction to remove the grinder vertically.
- Each time the grinder is used, the remaining coffee beans can be removed and the residual coffee powder in the grinder can be cleaned with the brush.



1. Cut off the power source and let the coffee maker cool down completely before cleaning.
2. Clean the housing of the coffee maker with a moisture-proof sponge often and clean water tank, drip tray, and removable shelf regularly then dry them.

Note: Do not clean with alcohol or solvent cleaner. Never immerse the housing in water for cleaning.

3. Detach the metal filter holder by turning it clockwise, get rid of coffee residue inside, then you can clean it with a cleanser, but at last, you must rinse with clear water. Do not wash the metal filter holder in a dishwasher.
4. Clean all the attachments in the water and dry thoroughly.

Note: Removable water tanks, coffee beans box, grinder, and filter holder bracket cannot be washed in the dishwasher.

CLEANING MINERAL DEPOSITS

To keep your coffee maker operating efficiently, you should clean away the mineral deposits left by the water regularly according to the water quality in your area and the frequency of use of the appliance:

1. Fill the water tank with water and descaler to the MAX level in the gauge of the coffee maker (the scale of water and descaler is 4:1, the detail refers to the instruction of Please use "household descaler", you can use citric acid instead of the des-cater (one hundred parts of water and three parts of citric acid).
2. Press the Power button, the unit enters the preheating mode. After finishing preheating, the indicator becomes fixed.
3. Make sure the filter holder locks in place.
4. Place a large enough container (approx. 2L) to receive water under the filter holder outlet, hot water pipe nozzle, and steam nozzle.
5. Press and hold the Hot water button for 5 seconds, the machine will enter the automatic cleaning function, then turn the steam knob to the Max position. During the automatic cleaning process, the descaler solution will flow out from the filter holder, hot water pipe, and steam pipe respectively, after 10 – 15 minutes, the cleaning function is completed, the machine enters the power-off state.
6. After removing scale, fill clear water into the water tank, repeat step 4 until descaler solution is cleaned up.
7. After cleaning, clean the water tank and drip tray.

Note:

1. During the automatic cleaning process, a suitable container (about 2L) shall be placed at the filter holder outlet and hot water outlet to receive water.
2. During cleaning, the pump will start and stop intermittently. This is a normal phe
3. During cleaning, the steam knob must be turned on. If the automatic cleaning function is switched to a clean steam wand, the machine will ring an alarm sound once the steam knob is turned off. At this time, the steam knob shall be turned on and the water will flow out of the steam wand.
4. It is recommended that the user shall perform descaling operation after 1000 working If the total working cycle of the machine reaches 1000 cycles, there will be a reminder signal once the machine is turned on (four indicators on the panel will flash red twice), which reminds the user to perform descaling.

TROUBLESHOOTING

PROBLEM	CAUSE	SOLUTION
Water leaks from the bottom of the coffee maker.	There is a lot of water in the drip tray. The coffee maker is malfunctioning.	Please clean the drip tray. Please contact the authorized service facility for repair.
Water leaks out of the outer side of the filter.	There is some coffee powder on the filter edge. It has not been cleaned correctly after cleaning mineral deposits.	Get rid of them. Clean coffee maker per the content in "before first use" several times.
Acid (vinegar) taste exists in Espresso coffee.	Coffee powder is stored in a hot, wet place for a long time. The coffee powder turns bad.	Please use fresh coffee powder, or store the unused coffee powder in a cool, dry place. After opening a package of coffee powder, reseal it tightly and store it in a dry place.
Coffee makers cannot work anymore.	The power outlet is not plugged well. The steam indicator is not illuminated.	Plug the power cord into a wall outlet correctly, if the appliance still does not work, please contact the authorized service facility for repair. Only after the steam indicator is illuminated, the steam can be used to froth.
Steam cannot froth.	The container is too big or the shape does not fit. You have used skimmed milk.	Use high and narrow containers. Use whole milk or half-skimmed milk.
During brewing, both indicators of the single and double cups flash red in the form of breathing light, and no coffee flows out of the filter holder or only flows out drop by drop.	Check if the coffee filter holder is clogged.	The coffee powder should not be too fine, and the amount of coffee powder exceeds the standard.
All the indicators of the machine flash red.	Check if the water inside the water tank is short.	Fill water in the water tank until the alarm condition disappears.
The grinding indicator flashes red.	1. If the grinder can work properly and the grinding indicator flashes red, this is the high-temperature alarm of the grinder. 2. If the grinder can not work properly when the grinding indicator flashes red, it is the grinder is attached improperly	1. The grinder is allowed to rest for a while until the grinding indicator cancels the alarm. 2. Need to re-attach the grinder.
The grinder can not dispense coffee powder in the finest setting.	This is normal, but the coffee powder can be dispensed if it is used for a long time, you can adjust to the coarser grind setting.	Adjust grind setting properly.



In compliance with Directives: 2012/19/EU and 2015/863/EU on the restriction of the use of dangerous substances in electric and electronic equipment as well as their waste disposal. The symbol with the crossed dustbin shown on the package indicates that the product at the end of its service life shall be collected as separate waste. Therefore, any products that have reached the end of their useful life must be given to waste disposal centers specializing in separate collection of waste electrical and electronic equipment, or given back to the retailer at the time of purchasing new similar equipment, on a one for one basis. The adequate separate collection for the subsequent startup of the equipment sent to be recycled, treated, and disposed of in an environmentally compatible way contributes to preventing possible negative effects on the environment and health and optimizes the recycling and reuse of components making up the apparatus. Abusive disposal of the product by the user involves the application of administrative sanctions according to the laws.

CREATE

THERA ADVANCE

The life you want to live in



Documents / Resources



[CREATE Espresso Coffee Machine](#) [pdf] User Manual
Espresso Coffee Machine



[CREATE Espresso Coffee Machine](#) [pdf] User Manual
Espresso Coffee Machine

[Manuals+](#),

- [home](#)
- [privacy](#)