



CREATE THERA EASY Espresso Coffee Machine User Manual

[Home](#) » [CREATE THERA EASY](#) » CREATE THERA EASY Espresso Coffee Machine User Manual 



EASY Espresso Coffee Machine



User Manual

Contents

- [1 Espresso Coffee Machine](#)
- [2 SECURITY INSTRUCTIONS](#)
- [3 PARTS LIST](#)
- [4 OPERATING INSTRUCTIONS](#)
- [5 CLEANING AND MAINTENANCE](#)
- [6 TROUBLESHOOTING](#)
- [7 Documents / Resources](#)
- [8 Related Posts](#)

Espresso Coffee Machine

Thank you for choosing our coffee machine. To ensure the best use, carefully read these Instructions.

The safety precautions enclosed herein reduce the risk of death, injury and electrical shock when correctly adhered to. Keep the manual in a safe place for future reference, along with the completed warranty card, purchase receipt and package. If applicable, pass these instructions on to the next owner of the appliance. Always follow basic safety precautions and accident-prevention measures when using an electrical appliance. We assume no liability for customer failure to comply with these requirements.

SECURITY INSTRUCTIONS

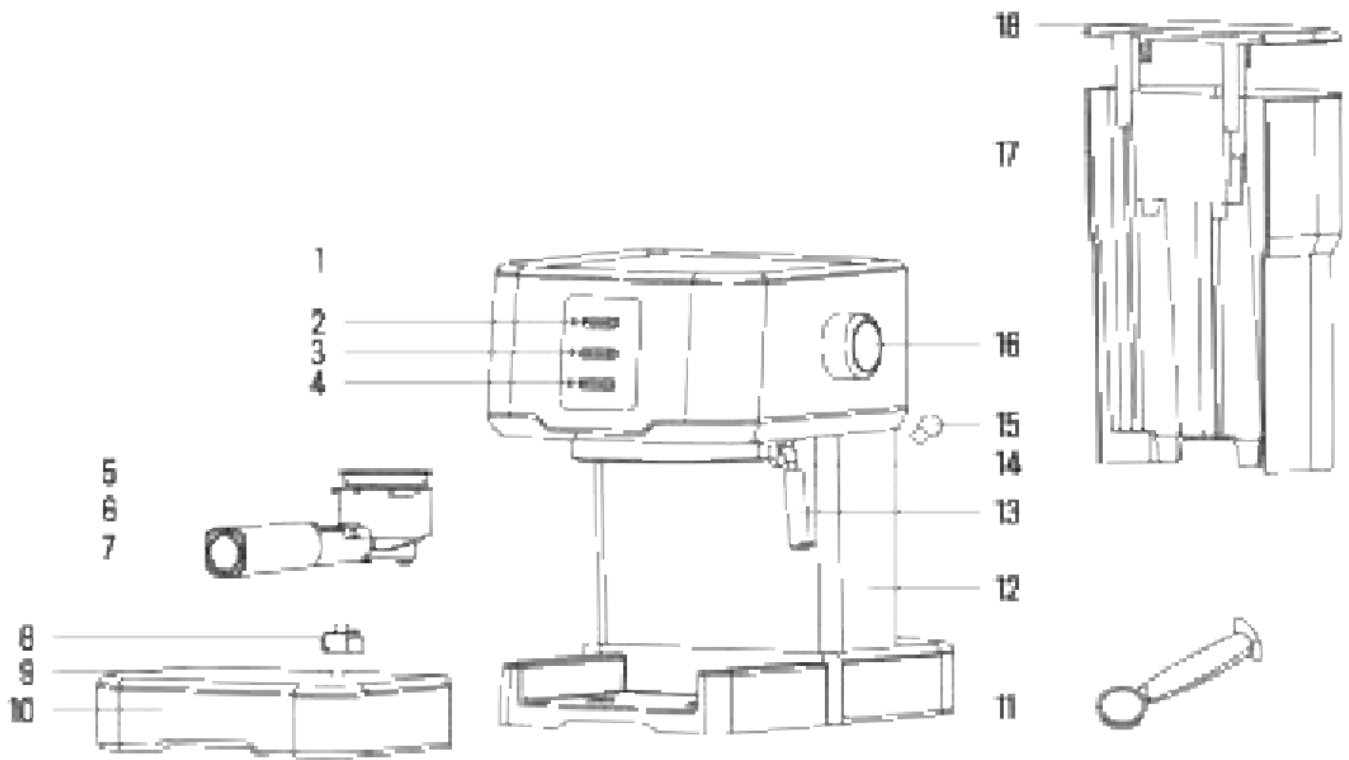
When using any electrical appliance, basic safety precautions should always be observed.

- Before using check that the voltage of wall outlet corresponds to rated voltage marked on the rating plate.
- This appliance has been incorporated with a grounded plug. Please ensure the wall outlet in your house is properly earthed.
- To protect against fire, electric shock and injury to persons do not immerse cord or plug in water or other liquid.
- Remove plug from wall outlet before cleaning and when not in use. Allow appliance to cool down completely before taking off, attaching component or before cleaning.
- Do not operate any appliance with a damaged cord or plug or after the appliance malfunctions, or is dropped or damaged in any manner, return appliance to the nearest authorized service facility for examination, repair or electrical or mechanical adjustment.
- The use of accessory attachments not recommended by the appliance manufacturer may result in fire, electric shock or injury to persons.
- Place appliance on flat surface or table, do not hang power cord over the edge of table or counter.
- Ensure power cord does not touch hot surface of appliance.
- Do not place the coffee maker on hot surface or beside fires in order to avoid being damaged.
- To disconnect, remove plug from wall outlet. Always hold the plug. But never pull the cord.
- Do not use appliance for other than intended use and place it in a dry environment.
- Close supervision is necessary when your appliance is being used near children.
- Be careful not to get burned by the steam.
- Do not touch the hot surface of appliance. Use handle or knobs.
- Do not let the coffee maker operate without water.
- Do not remove the metal funnel when appliance is brewing coffee or when releasing steam.
- Connect plug to wall outlet before using and turn any switch off before plug is removed from wall outlet.

- This appliance can be used by children aged from 8 years and above and persons with reduced physical, sensory or mental capabilities or lack of experience and knowledge if they have been given supervision of instruction concerning use of the appliance in a safe way and understand the hazards involved. Children shall not play with the appliance. Cleaning and user maintenance shall not be made by children unless they are older than 6 and supervised.
- Children should be supervised to ensure that they do not play with the appliance.
- Operating or storing environment temperature shall be no more than 40 °C.
- This appliance is intended to be used in household and similar applications such as: staff kitchen areas in shops, offices and other working environments; farm houses; by clients in hotels, motels and other residential type environments; bed and breakfast type environments.
- Do not use outdoors.
- Save these Instructions,
- if you do not use the product for a long time, you need to turn on the power and then release steam for 3 minutes before storing it.

PARTS LIST

1. Tap cover
2. Power button
3. Coffee button
4. Steam button
5. Switches
6. Metal mesh
7. Airtight funnel
8. Float valve
9. Removable cup shelf
10. Orifice tray
11. Measuring spoon
12. Main body
13. Foam nozzle
14. Steam wand
15. Steam pipe handle
16. Steam control, knob
17. Top Water tank
18. Water tank cover



OPERATING INSTRUCTIONS

BEFORE FIRST USE

To ensure the first cup of coffee tastes excellent, you should rinse the coffee maker with warm water as follows:

1. Open water tank cover, fill water into water tank, water level should not exceed the "MAX" mark in water tank. Then replace the water tank cover.
- Note:** the appliance is supplied with a detachable water tank for easy cleaning, you can fill water tank with water first, and then attach water tank into the appliance.
2. Set the steel mesh into metal funnel (no coffee in steel mesh), make sure the tube on the funnel aligns with the groove in the appliance, then insert the funnel into the appliance from the "INSERT" position, and fix them into the coffee maker firmly by turning it anticlockwise until it is at the "LOCK" position.
3. Place a jug on the removable cup shelf. Make sure steam control knob is at the OFF position.
4. Connect to power source, press power button, the power indicator turns red.
5. Press the Coffee button, the unit will pump water, when there is water flowing out, press the Coffee button to stop pumping water. Press the Steam button and wait for a moment, the appliance begins to preheat until the Coffee button indicator is illuminated, it shows that the preheating is finished. Press the Coffee button and water will flow out.
6. When there is no water dropping out any more, pour out water in each container and then clean them thoroughly. Now the appliance is ready for making coffee.

Note: There may be noise when pumping water for the first time, that is normal because the appliance is releasing the air inside. After about 20 seconds, the noise will disappear.

PREHEATING

To make a cup of good hot Espresso coffee, we recommend you should preheat the appliance before making

coffee, including metal funnel, steel mesh and cup, so that the coffee flavour is not influenced by cold parts.

1. Remove detachable water tank and open the water tank cover to fill it with desired water, the water level should not exceed the "MAX° mark in the tank. Then replace the water tank.
2. Set the steel mesh into the metal funnel, make sure the tube on the funnel aligns with the groove in the appliance, then Insert the funnel into the appliance from the "INSERT™ position, and fix tam into the coffee maker firmly by turning it anticlockwise until it is at the "LOCK" position.
3. Place an espresso cup on the removable cup shelf.
4. Then connect the appliance to the power supply. Make sure the steam control knob is ON the OFF position.
5. Press power button and power indicator turns red. Press the Coffee button, when there is water flowing out, press the Coffee button again to stop pumping water immediately.

The purpose of this step is to pump the water of the water tank into the boiler.

6. When the Coffee button indicator turns green, it indicates the preheating is finished.

MAKING ESPRESSO

1. Remove the funnel by turning it clockwise. Add ground coffee into the steel mesh with the measuring spoon, a spoon of ground coffee powder can make about a cup of top-grade coffee, then press the ground coffee powder tightly with the tamper.
2. Set the steel mesh into the metal funnel, make sure the tube on the funnel aligns with the groove in the appliance, then insert the funnel into the appliance from the "INSERT® position, and fix them into the coffee maker firmly by turning it anticlockwise until it is at the "LOCK" position.
3. Place a cup on the removable cup shelf.
4. Wait for a moment for the Coffee Indicator to turn on. Then, press the Coffee button, wait for a moment again and there will be coffee flowing out.
5. Press the Coffee button when the desired amount of coffee is obtained or the colour of coffee gets weaker. The coffee maker will stop working. The Coffee button will be off for a moment, when it turns on again you can continue to make coffee.

WARNING: Do not leave the coffee maker unattended during making coffee, as you need to aerate manually sometimes.

6. After finishing making coffee, take the metal funnel out by turning it clockwise, then pour coffee residue out with the steel mesh pressed by the press bar.
7. Let them cool down completely, then rinse under running water.

MAKING CAPPUCCINO / FROTHED MILK

You get a cup of cappuccino when you top up a cup of espresso with frothed milk. Method:

1. Prepare an espresso first according to the "MAKE ESPRESSO" section, make sure that steam control knob is at the OFF position.
2. Press the Steam button. The Coffee button indicator will be off, wait until the Steam button indicator turns on again.

Note: During operation, the Steam button indicator will cycle on and off to maintain the desired temperature.

3. Fill a jug with about 160 ml of milk for each cappuccino to be prepared, you are recommended to use whole milk.

at refrigerator temperature (not hot).

Note In choosing the size of the jug, bear in mind that the milk increases in volume by 2 times, make sure the height of the jug is enough.

4. Turn the steam control knob slowly anti-clockwise, the steam will come about from the frothing nozzle.

Note Never turn the steam control button rapidly, as the steam will accumulate rapidly within short time which may increase a potential risk of explosion.

5. Insert the frothing nozzle into the milk about two centimeters, froth milk moving the vessel round up and down.
6. When the required result is reached, turn the steam control knob to OFF position.

Note: Clean the steam outlet with a wet sponge immediately after steam stops producing, but be careful not to get hurt.

7. Pour the frothed milk into the espresso prepared, now the cappuccino is ready. Sweeten to taste and if desired, sprinkle the froth with a little cocoa powder.

8. Press the Power button to cut off power. All indicators will be off.

Note: If you want to make coffee immediately after making steam, the Coffee indicator will flash green for alarming upon pressing the coffee button. At this time you should turn the steam control knob to the ON position to pump hot water in order to let the unit cool down.

AUTOMATIC POWER OFF FUNCTION

Once the unit is turned on, it will power off automatically after 26 minutes, if you want to continue making coffee, you need to press the power button again to restart the unit.

CLEANING AND MAINTENANCE

- Turn off the coffee maker and let it cool down completely before cleaning.
- Clean the housing of the coffee maker with a moisture-proof sponge often and clean water tank, drip tray and removable cup shelf regularly then dry them.

Note: Do not clean with alcohol or solvent cleanser. Never immerse the housing in water for cleaning.

- Detach the metal funnel by turning it clockwise, get rid of coffee residue inside, then clean it with cleanser, but at last rinse with clear water.
- Clean all the attachments in the water and dry them thoroughly.

Note: Do not wash the filter holder arm or the filter in a dishwasher.

CLEANING MINERAL DEPOSITS


To make sure your coffee maker operates efficiently, regular cleaning and descaling is essential and that the flavour of coffee is optimal. You should clean away the mineral deposits left every 2-3 months.

1. FILL the water tank with water add descaler: to the MAX Level (The proportion of descaler and descaled is 4:1. For details refer to the Instructions of the descaler. Please see "household descaler", you can use citric acid (available at the chemist's or drug store) instead of the descaler ("one hundred parts of water and three parts of citric acid").
2. According to the preheating program, put the metal funnel (without coffee powder in it) and jug in place. Brew water as per "PREHEATING".
3. Press the Power button and the power indicator will turn on. Press the Coffee button, make sure steam control knob is in the Off position, when the water is flowing out, press Coffee button to stop pumping, and wait for a moment the coffee maker heating to preheat.

- When the Coffee button indicator turns on, it means that preheating is finished. Press the Coffee button and make two cups of coffee (about 200). Press the Coffee button 2 Stop pumping,
- Press the Steam button, the Café button indicator will turn on, Wait until the Steam button indicator turns on. Make steam for 2min by turning the steam control knob, then turn the steam control knob to the OFF position to stop making steam. Press the Power button the Turn off the unit immediately, make the descale deposit inside the unit at least 18 minutes.
- Press the Power button to restart the unit, wait until the Coffee button Indicator turns on, then press the Coffee button to brew until no descale is left
- When with tap watering the MAX develop repeat steps 4-6 for 3 times, then proceed until no water left in the water tank.

TROUBLESHOOTING

FAULT	CAUSE	SOLUTION
The metal plate the can bear nuts	It is not of the required type. It may corrode the gasket parts in the machine	the dealer may need to be consulted.
Water leaks from the bottom of coffee maker,	There is a waste of water that is dripping	Pressure Control Valve vary.
	That coffee maker is not working properly	Wedge contact at the bottom of the gasket. 30 repair.
Water leaks out of the bottom of the machine.	There is a coffee powder or the filter is clogged.	Get rid of the coffee
	It has not been cleaned correctly after clearing the coffee powder.	Clean coffee maker with the Samba in "batched first use" for several times.
After the coffee is made, there is a strong smell of coffee powder.	Coffee: owner should use a hot water to place the coffee powder in the machine	Place the coffee powder in a store unused coffee powder in a cool place after opening & precede of coffee powder, rascal. tightly and store the coffee first: 2 coffee powder means,
Coffee maker cannot work properly,	Powder on the filter is not packed well.	Also that the coffee maker is not working correctly, * the appliance still does not work, Gibe So TAT wit fret authored sarinda facility for roomie:
Steamer cannot froth.	The steam indicator is not working properly,	Only after the steam indicator is cleared, the steam can be used to froth.
	"The combiner is too big are the shape does not fit. At the end have used the mixed milk	Use the narrow and contain the whole milk in the shirred relic.

	<p>CREATE THERA EASY Espresso Coffee Machine [pdf] User Manual</p> <p>EEM-020 Espresso Coffee Machine, EEM-020, Espresso Coffee Machine, Coffee Machine, Machine</p>
---	--