



CREALITY ZDTP-32 Bit BLTouch V3.1 Auto Bed Leveling Sensor Kit User Guide

[Home](#) » [Creality](#) » CREALITY ZDTP-32 Bit BLTouch V3.1 Auto Bed Leveling Sensor Kit User Guide 

Contents

- 1 CREALITY ZDTP-32 Bit BLTouch V3.1 Auto Bed Leveling Sensor Kit
- 2 Packing List
- 3 Circuit Principle
- 4 Update Firmware
- 5 Update Firmware
- 6 Install BL Touch
- 7 Platform Adjustment
- 8 Platform Adjustment
- 9 Software Settings
- 10 AUTO BED LEVELING SENSOR FOR 3D PRINTER
- 11 SHENZHEN CREALITY 3D TECHNOLOGY CO., LTD.
- 12 Packing List
- 13 Install BLTouch
- 14 Circuit Wiring
- 15 Update Firmware
- 16 Platform Adjustment
- 17 Software Settings
- 18 Documents / Resources
 - 18.1 References
- 19 Related Posts

CREALITY

CREALITY ZDTP-32 Bit BLTouch V3.1 Auto Bed Leveling Sensor Kit



AUTO BED LEVELING SENSOR FOR 3D PRINTER

This guidebook is for Creality V1 mainboard. It includes but is not limited to the following 3D printer: CR-10/Ender-3

File download: <https://www.creality.com/download/>

Scan QR code to view detailed instruction



SHENZHEN CREALITY 3D TECHNOLOGY CO., LTD.

11F & Room 1201, Block 3, JinChengYuan, Tongsheng Community, Dalang, Longhua District, Shenzhen, China, 518109

Official Website: www.creality.com

Tel: +86 755-8523 4565

E-mail: info@creality.com cs@creality.com

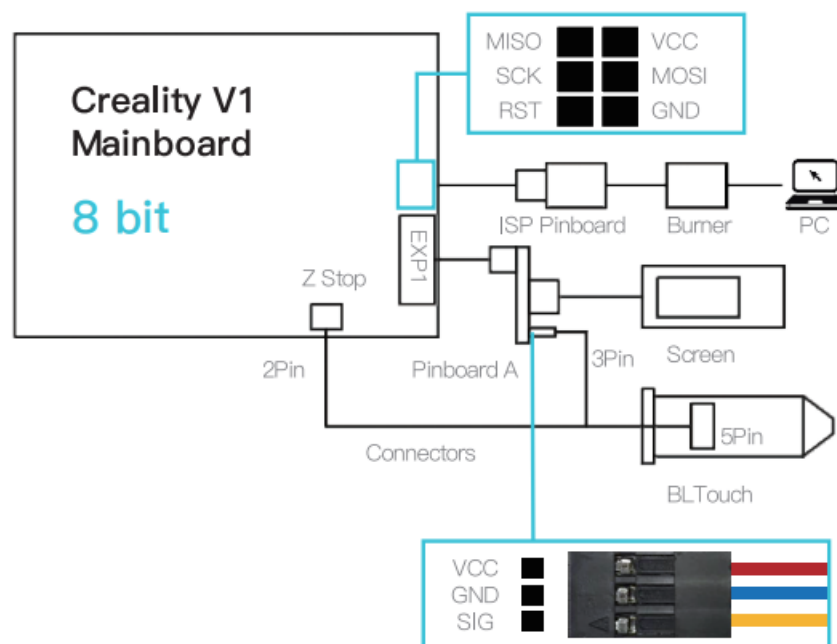
Packing List

① Packing List

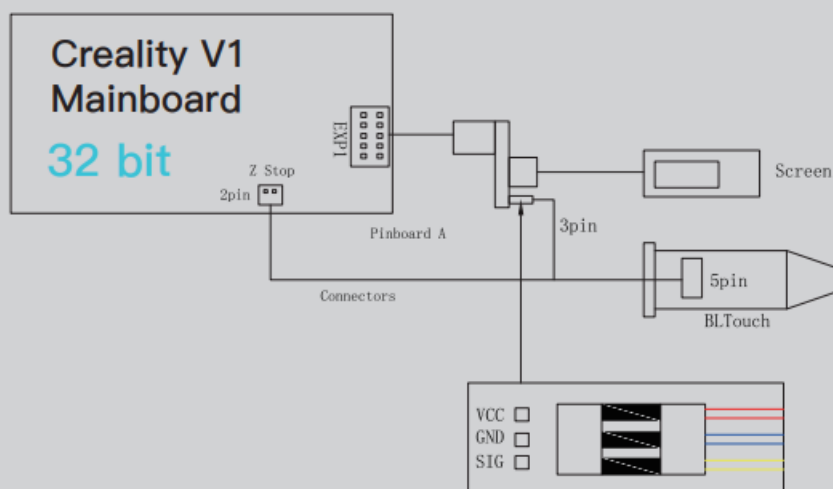


Circuit Principle

② Circuit Principle

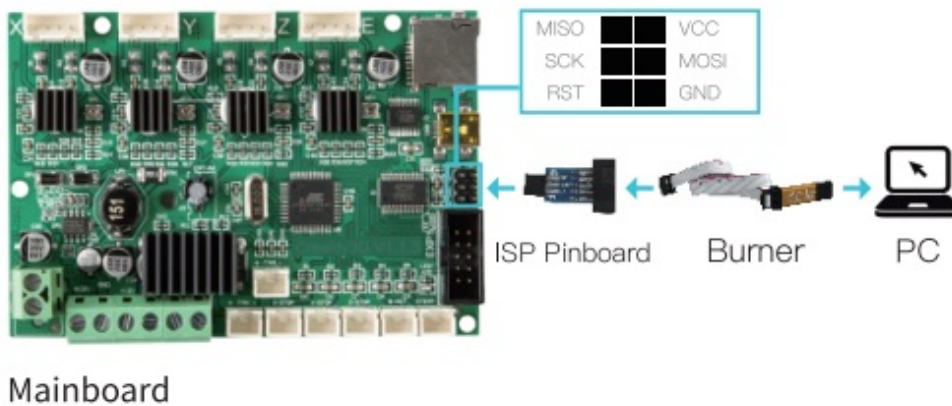


② Circuit Principle

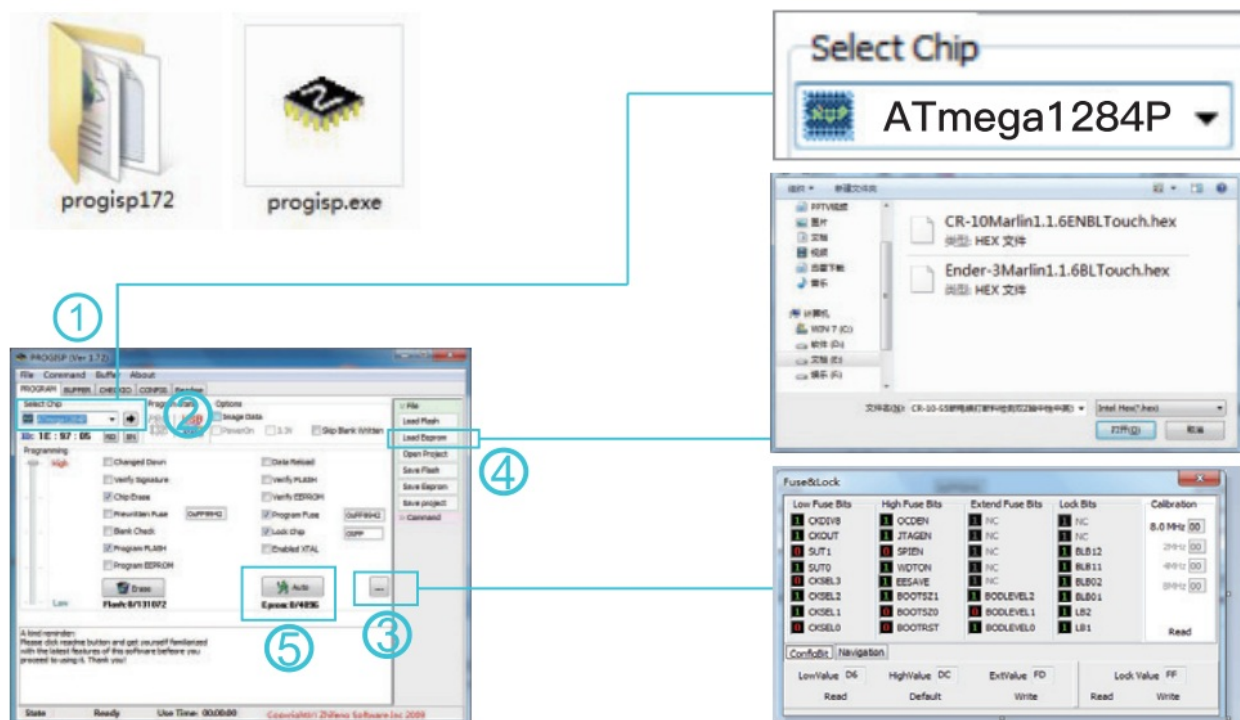


Update Firmware

③ Update Firmware 8 bit

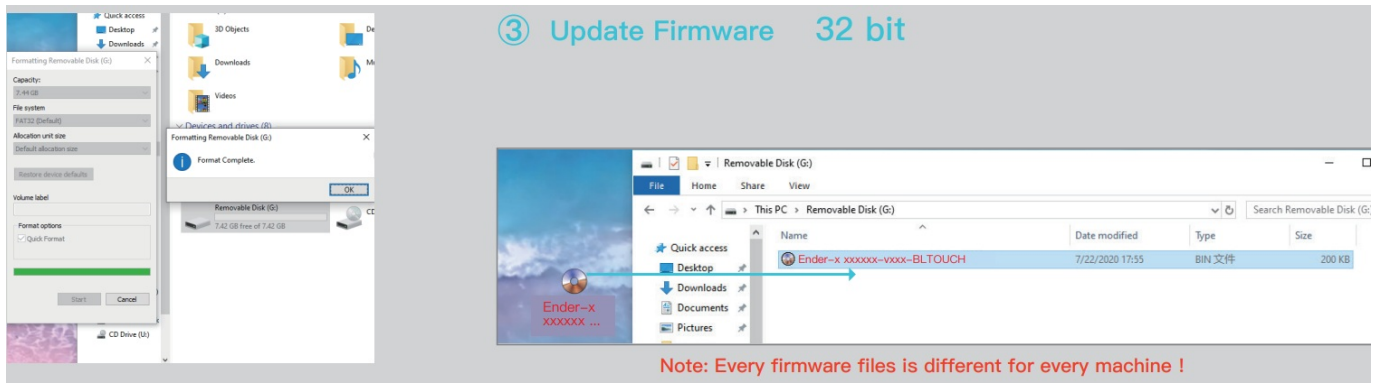


1. Connect ISP Pinboard and Burner.
2. Open the control box and find out the mainboard
3. Insert ISP pinboard into the mainboard 2X3 pins as the sign shows.
4. Insert the burner into computer USB port.

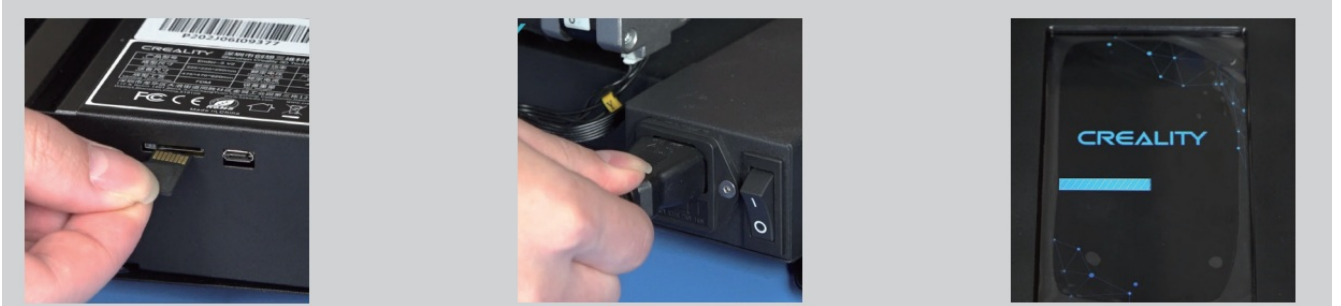


1. Open progisp.exe
2. Select Chip ATmega1284p3, Click ... —> Set Low Value=D6, HighValue=DC, ExtValue=FD—>Click Write and close the window.
3. load Flash—>Select .hex 1file.
4. Click Auto to update firmware, wait until it 1inishs, then close.
5. Unplug the ISP Pinboard from mainboard.

Update Firmware



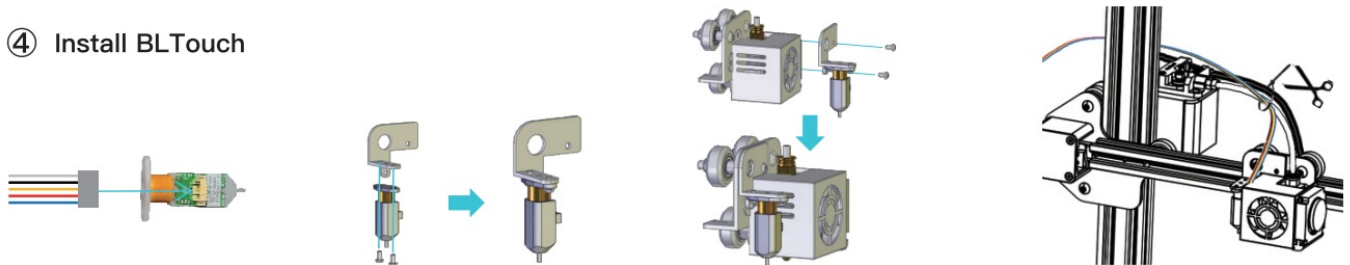
1. Double-click to open computer-right-click to format SD card.
2. Copy the firmware to the SD card. Note: the SD card only holds one firmware file.



3. Insert SD card.
4. Insert the power cord and press the switch.
5. Wait for the brush firmware to complete (about 10 seconds).

Install BL Touch

④ Install BLTouch



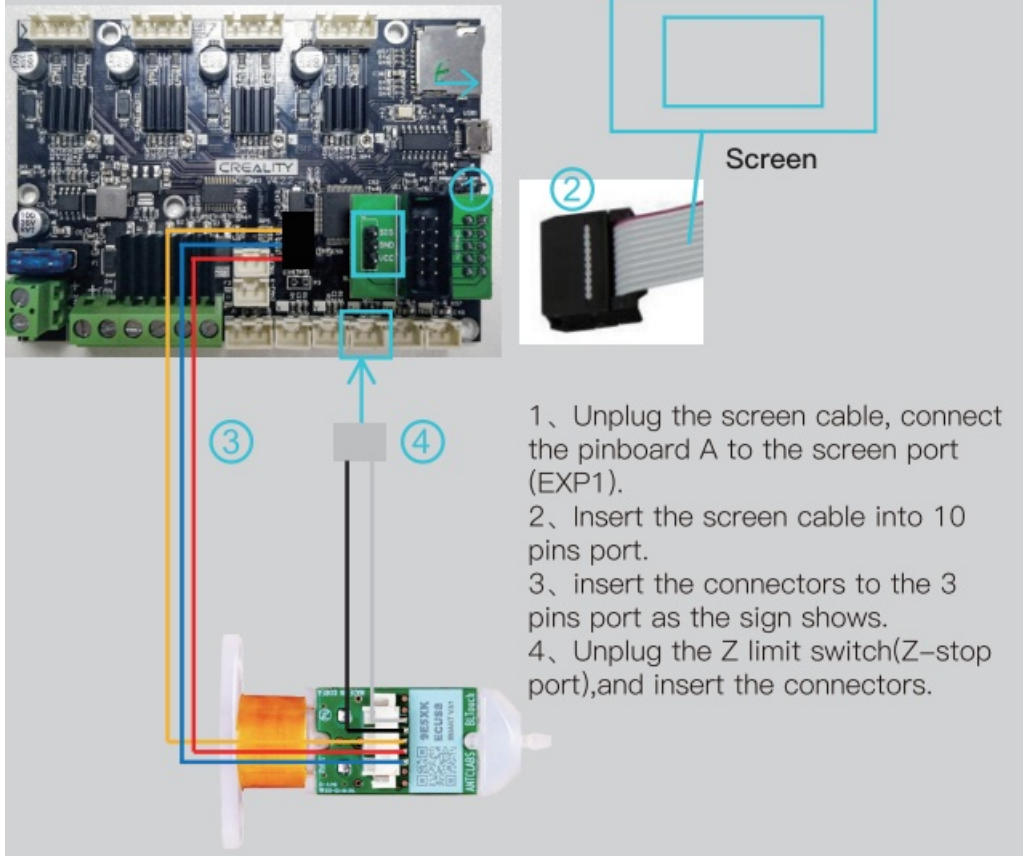
1. Insert connectors into 5 Pin Port.
2. Install BL Touch on the rack with 2 M3X6 screws
3. Loosen all fan cover screws, Install the fan on the corresponding position with 2 M3X8 screws
4. Secure the cable to the guide tube and cable with a cable tie and bypass the rear side of the gantry.

⑤



1. Unplug the screen cable, connect the pinboard A to the screen port (EXP1).
2. Insert the screen cable into 10 pins port.
3. insert the connectors to the 3 pins port as the sign shows.
4. Unplug the Z limit switch(Z-stop port),and insert the connectors

⑤ Circuit Wiring 32 bit



1. Unplug the screen cable, connect the pinboard A to the screen port (EXP1).
2. Insert the screen cable into 10 pins port.
3. Insert the connectors to the 3 pins port as the sign shows.
4. Unplug the Z limit switch (Z-stop port), and insert the connectors.

Platform Adjustment

⑥ Platform Adjustment

8 bit

Note: The actual sequence of operation depends on the machine model.

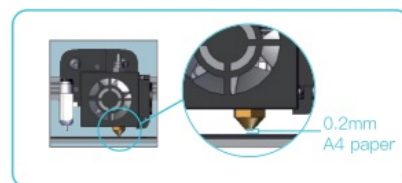
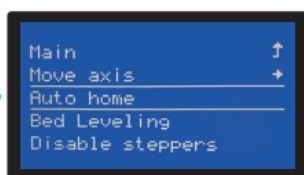
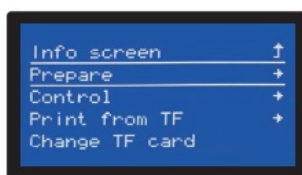
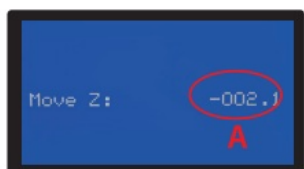
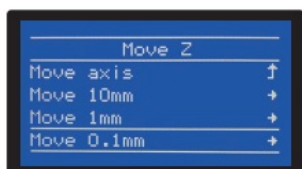
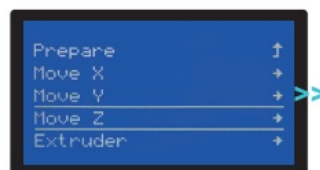
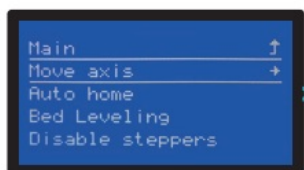
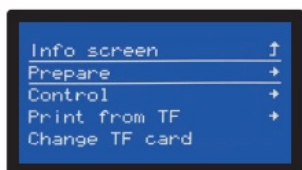
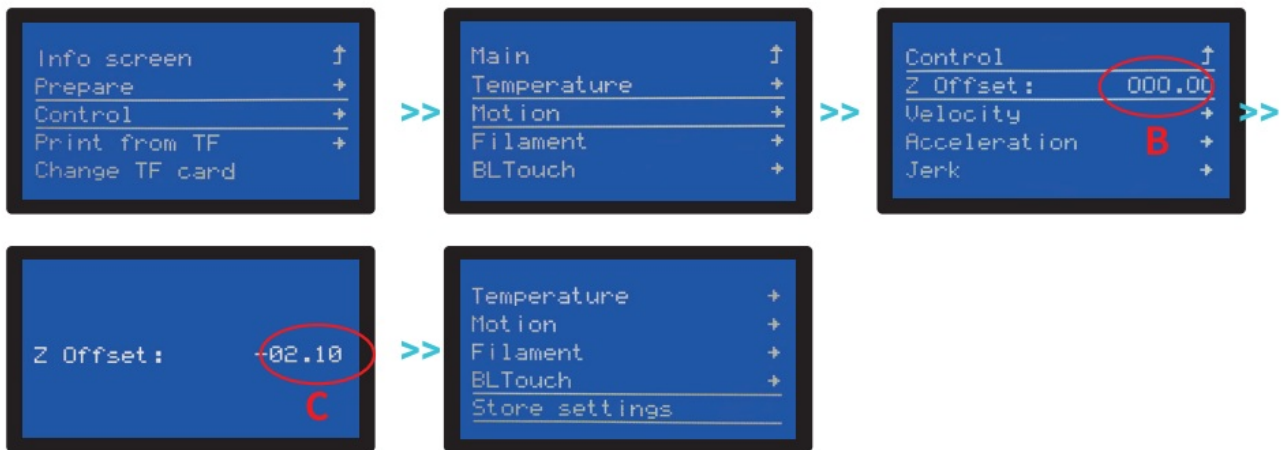


Figure3

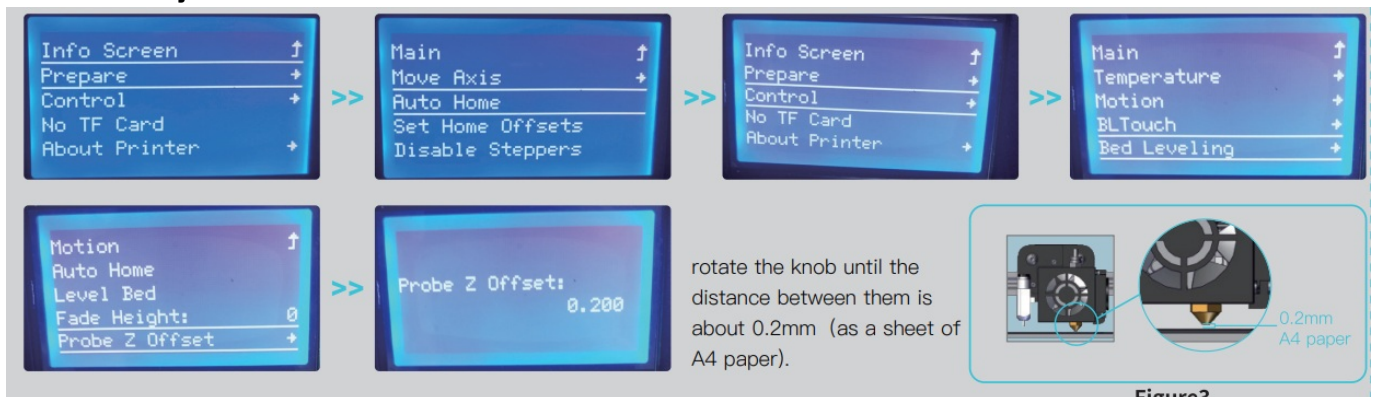


1. Prepare—>Auto home, and wait until it stops.



2. Prepare->Move axis—>Move Z—>Move 0.1 mm—>Rotate the knob until the distance between them is about 0.2mm (as a sheet of A4 paper) , write down the value of A.
3. Rotate the knob until the distance between them is about 0.2mm (as a sheet of A4 paper) , write down the value of A (For example, figure 3)
4. Control—>Motion—>Z Offset—>write down the value of B, then rotate the knob until it comes out as: $C=B+A$.
Return Control and Select Store settings.

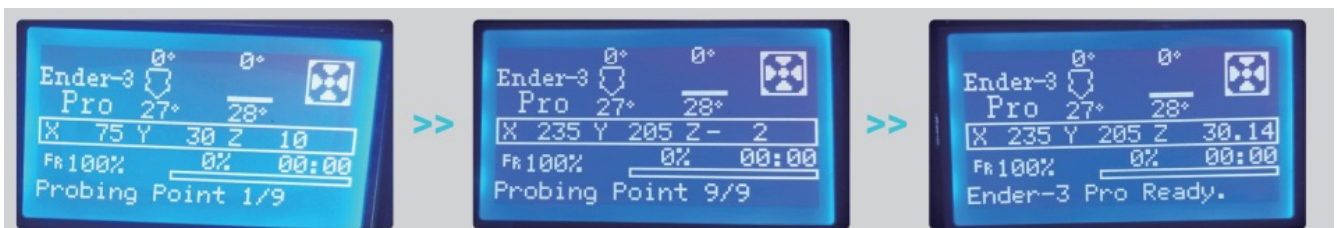
Platform Adjustment



1. Prepare—>Auto home, and wait until it stops.



2. Select control.
3. Select Bed leveling.
4. Select Level Bed.



5. leveling 9 points
6. 9 points leveling completed

7. automatic leveling is completed, the machine is ready to be OK

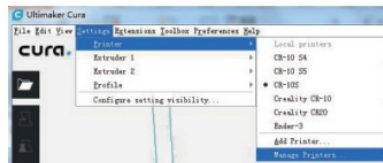
Note: Every machine has its own operation interface.

Software Settings

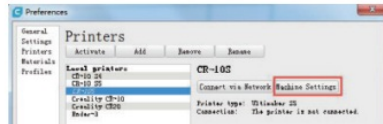
⑦ Software Settings



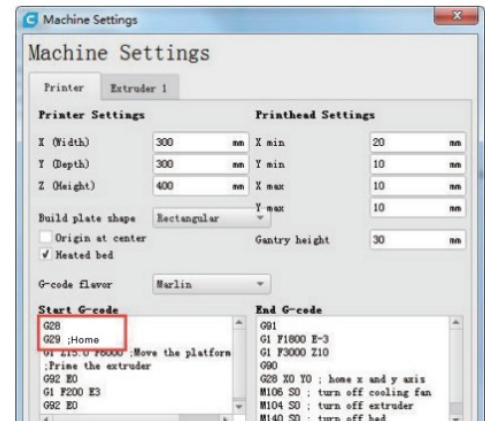
1、Open Cura



2、Settings→Printer-Manage Printers



3、Machine Settings



4、Change“G28”to“G28 G29”

AUTO BED LEVELING SENSOR FOR 3D PRINTER

This guidebook is for Creality V2 mainboard. It includes but is not limited to the following 3D printer: CR-10S/CR-10 S4/CR-10 S5/CR20.

File download: <https://www.creality3d.cn/download/>

Video instruction of firmware flash: <http://bit.ly/2FkyOag>

Video instruction of USB Driver Installation: <http://bit.ly/2ZNvjTn>

Scan QR code to view detailed instruction



Website



Facebook

SHENZHEN CREALITY 3D TECHNOLOGY CO., LTD.

12/F, Block 3, JinChengYuan, Huafan Road, Tongsheng Community, Dalang, Longhua District, Shenzhen, China, 518109

Official Website: www.creality3d.cn

Tel: +86 755-2103 4006

E-mail: info@creality3d.cn cs@creality3d.cn

Packing List

① Packing List



BLTouch



Connectors



Rack



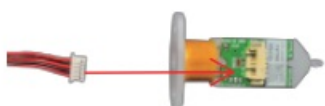
M3X8 2PCS



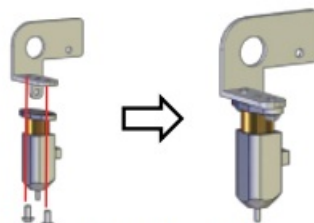
M3X6 2PCS

Install BLTouch

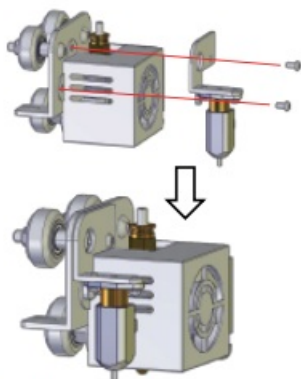
② Install BLTouch



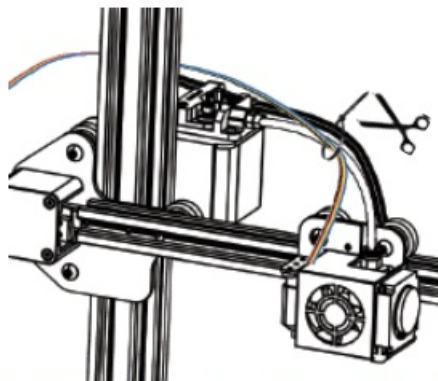
1、Insert connectors into 5 Pin Port.



2、Install BLTouch on the rack with 2 M3X6 screws



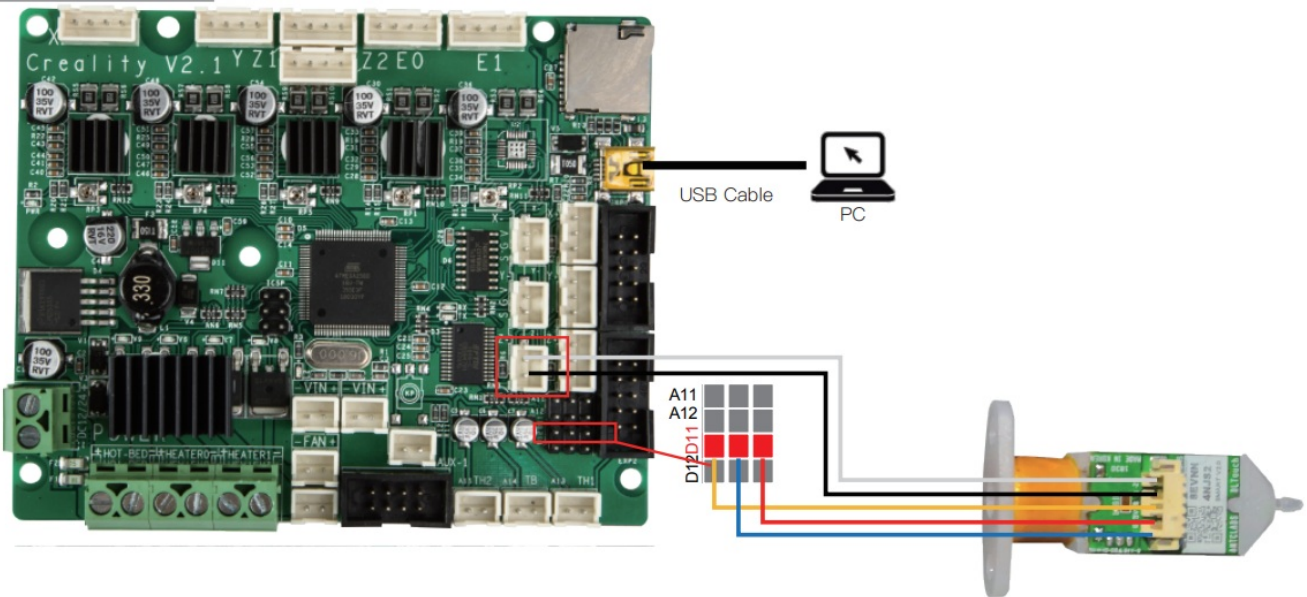
3、Loosen all fan cover screws, Install the frame on the corresponding position with 2 M3X8 screws



4、Secure the cable to the guide tube and cable with a cable tie and bypass the rear side of the gantry.

Circuit Wiring

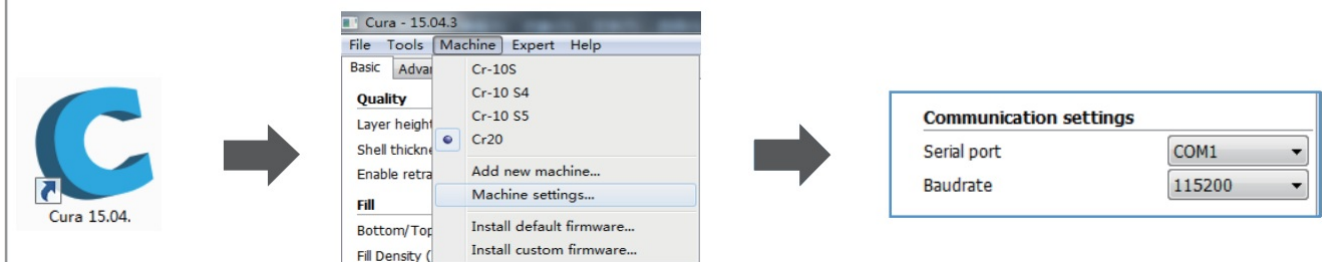
③ Circuit Wiring



1. Open the control box and find out the mainboard.
2. Unplug the Z limit switch (Z port), and insert the connectors.
3. Insert connectors into the mainboard D11 pins as the color shows.
4. Closed the control box.
5. Connect ISP Pinboard and Burner.
6. Connect computer to update firmware with usb cable.

Update Firmware

④ Update Firmware



Open Cura→Machine→Machine settings→Select Serial port COM & Baudrate 115200



Machine→Install custom firmware→Select .hex file→Click OK to update Waiting until it is finished, then click ok.

Platform Adjustment

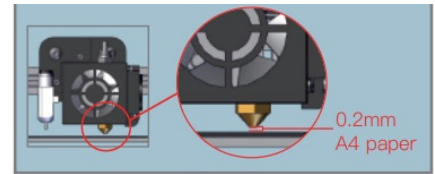
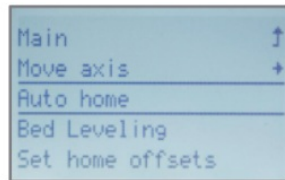
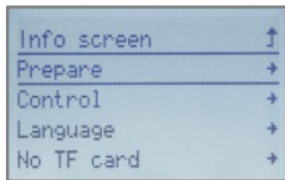
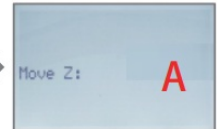
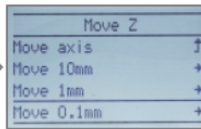
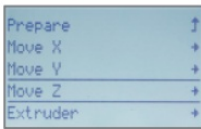
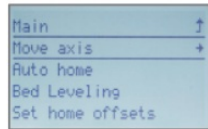
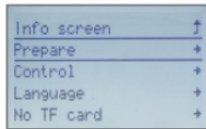
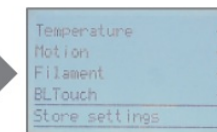
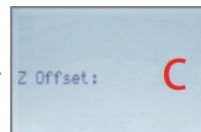
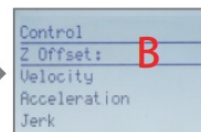
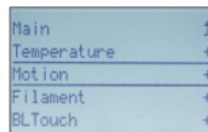
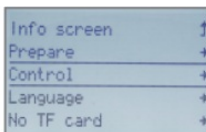


figure 3

1. Prepare→Auto home and wait until it stops.



2. Prepare→Move axis→Move Z→Move 0.1mm→Rotate the knob until the distance between them is about 0.2mm as a sheet of A4 paper write down the value of A.
3. Rotate the knob until the distance between them is about 0.2mm as a sheet of A4 paper write down the value of A For example, figure 3 .



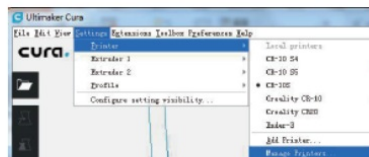
4. Control→Motion→Z Offset→write down the value of B then rotate the knob until it comes out as: C=B+A. Return Control and Select Store settings.

Software Settings

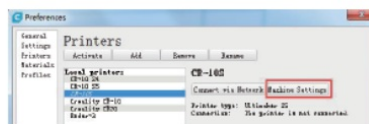
⑥ Software Settings



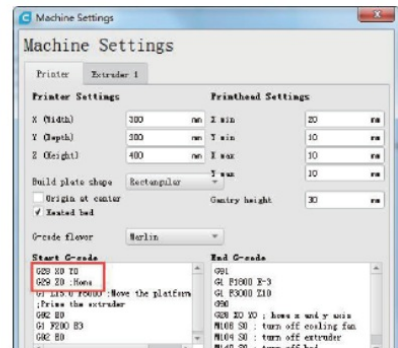
1、Open Cura



2、Settings→Printer-Manage Printers

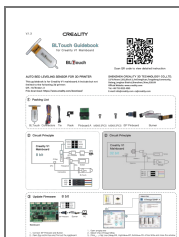


3、Machine Settings



4、change "G28" to "G28 X0 Y0 G29 Z0"

Documents / Resources



[CREALITY ZDTP-32 Bit BLTouch V3.1 Auto Bed Leveling Sensor Kit \[pdf\] User Guide](#)
ZDTP-32 Bit, BLTouch V3.1 Auto Bed Leveling Sensor Kit, Auto Bed Leveling Sensor, Bed Leveling Sensor, ZDTP-32 Bit, Leveling Sensor

References

- [Dropbox - File Deleted](#)

-  [Dropbox - File Deleted](#)

Manuals+.