

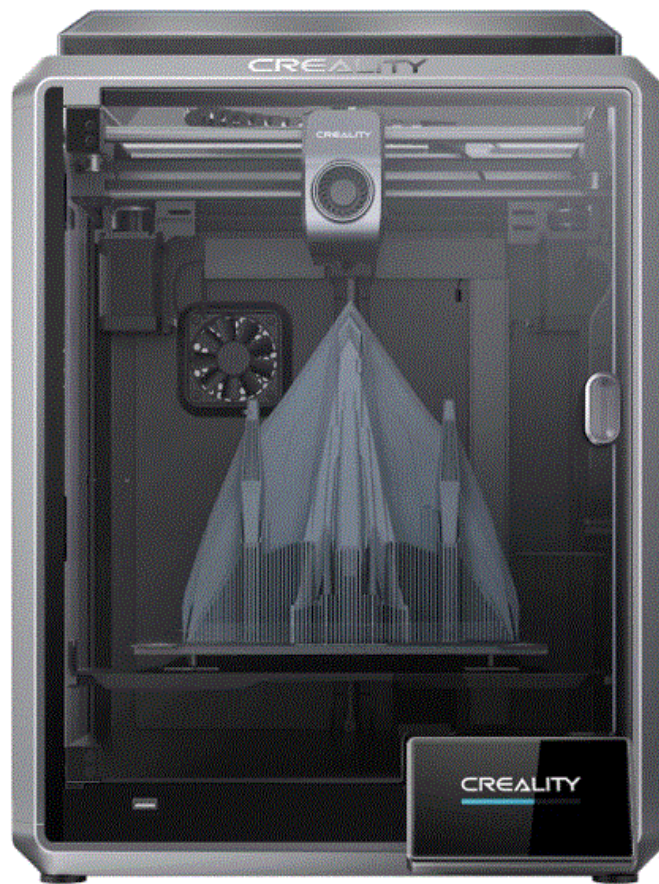


Contents [[hide](#)]

- 1 CREALITY SHAPE F 600 01 Max 3D Printer
- 2 About the Device
- 3 Device Specifications
- 4 Packing List
- 5 Unboxing
- 6 Install the Product
- 7 About the User Interface
- 8 First Printing
- 9 Functional Specification
- 10 Tips and Routine Maintenance
- 11 FCC Statement
- 12 Frequently Asked Questions
- 13 Documents / Resources
 - 13.1 References



CREALITY SHAPE F 600 01 Max 3D Printer



DEAR USER

Thank you for choosing our products. For the best experience, please read this User Manual carefully and strictly follow the instructions to operate the printer. Our teams will always be ready to provide you with the best services. Please contact us via the phone number or e-mail address provided at the end of this User Manual when you encounter any problem with the printer.

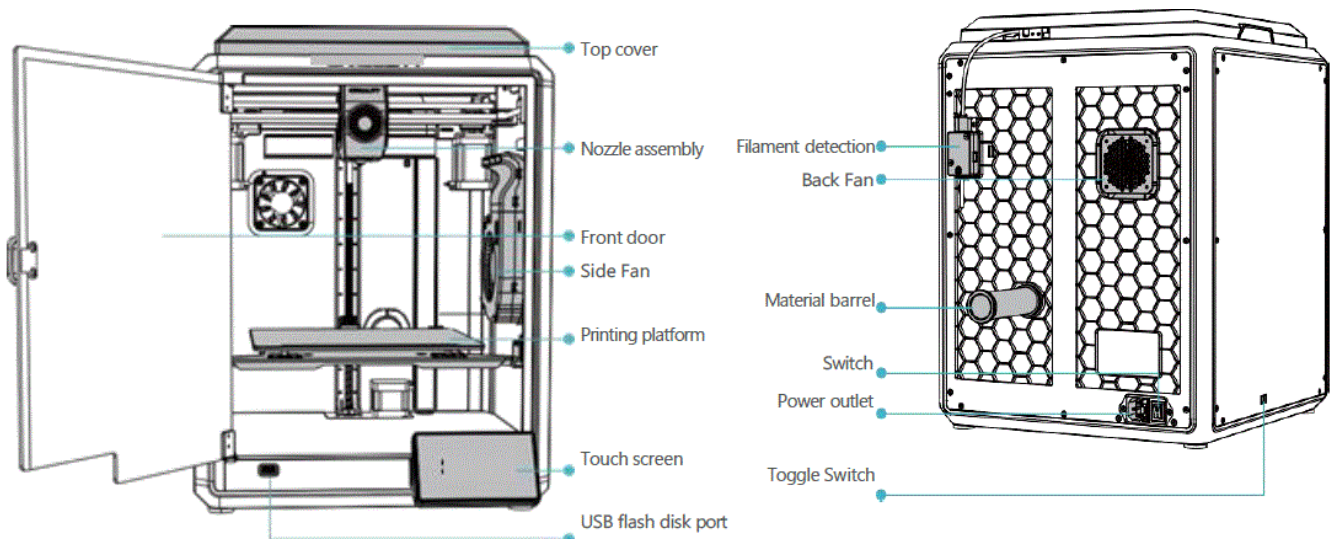
NOTES

1. Do not use the printer in any way other than described herein to avoid personal injury or property damage
2. Do not place the printer near any heat source or flammable or explosive objects. We suggest placing it in a well-ventilated, cool and dustless environment
3. Do not expose the printer to a violent vibration or any other unstable environment, as this may cause poor print quality
4. Please use recommended filaments to avoid clogging of the extrusion head and causing damage to the machine
5. Do not use the power cable of other products during installation. Always use a grounded three-prong power outlet, which accompanies the printer

6. Do not touch the nozzle and the heated bed during operation to avoid burns or personal injury
7. Do not wear gloves or wraps while operating the machine to prevent entrapment of movable parts that could cause crushing and cutting injuries to bodily parts
8. Use the provided tools to clean the filament from the extruder in time taking advantage of the residual temperature after printing. Do not touch the extruder directly when cleaning, otherwise it may cause burns
9. Clean the printer frequently. Clean the printer body with a dry cloth regularly after powering off the printer, wipe away dust, bonded print filament and foreign objects on the guide rails
10. Children under 10 years old should not use the printer without supervision, otherwise it may cause personal injury
11. Users should comply with the laws and regulations of the corresponding countries and regions where the equipment is located (used), abide by professional ethics, pay attention to safety obligations, and strictly prohibit the use of our products or equipment for any illegal purposes
12. **Tip:** Do not plug in or unplug wires on a charged basis.

About the Device

About the Printer

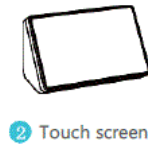
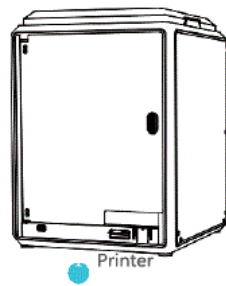


Device Specifications

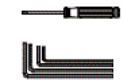
Basic Parameters

Product Model	SHAPE F 600 01 (Xugu-T004)
Dimensions	355*355*480mm
Machine Weight	12.5kg
Max. Build Dimensions	220*220*250mm
Print Technology	FDM
Rated Voltage	100-120V~/200-240V~ 50/60Hz
Rated Power	350W
Ambient temperature	10°C-30°C / 50°F-86°F
Extruder	Sprite Direct Drive
Supported Filament	PLA/TPU/PETG/ABS/PET/Carbon
Max. Heated Bed Temperature	100°C
Max. Nozzle Temperature	300°C
User Interface	4.3 inch touch screen
Print interface	USB Flash Disk/LAN Printing
Power Loss Recovery	Yes
Filament Detection	Yes
Auto leveling	Yes

Packing List



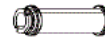
Tool Box List



4 Wrench and
Screwdriver ×1



5 Blade ×1



6 Material barrel ×1



7 Cutting plier ×1



8 1.2mm nozzle
cleaner ×1



9 USB flash
disk ×1



10 Power Cable ×1



11 M6 socket
spanner ×1



12 Damping pads ×4



13 Quick Guide ×1



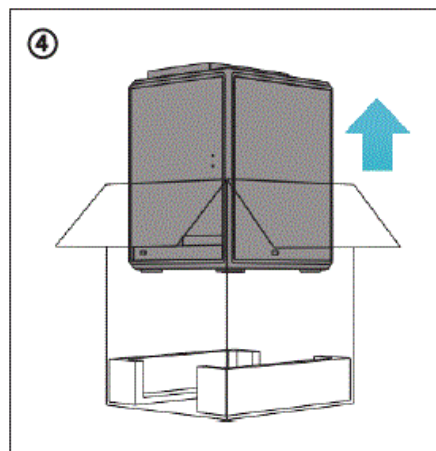
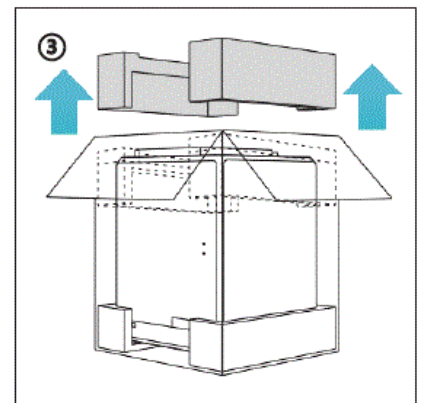
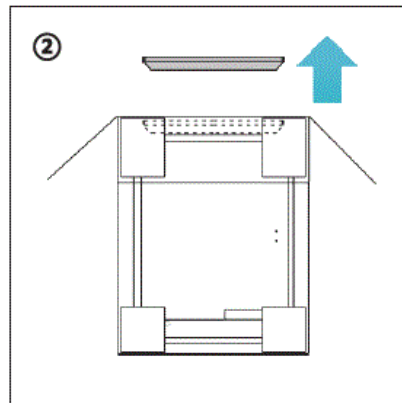
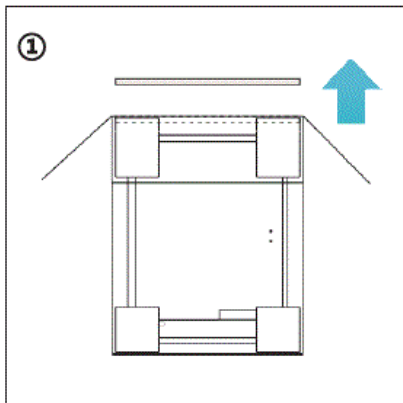
14 After-sales Services
Card ×1



15 Door handle
assembly ×1

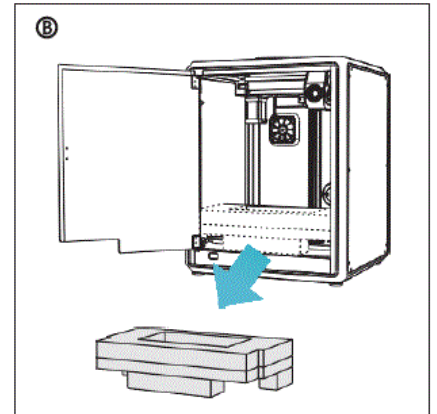
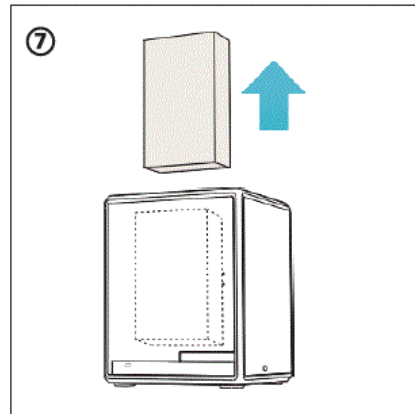
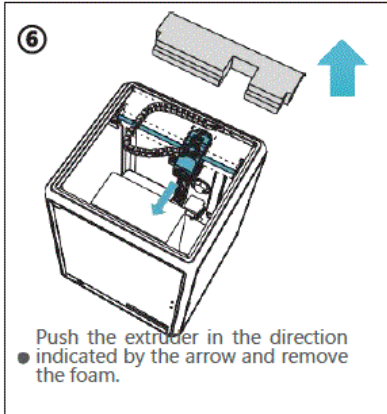
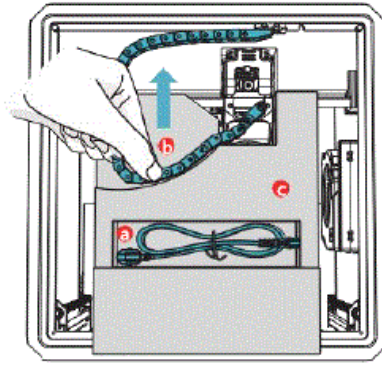
Unboxing

Unpacking Steps



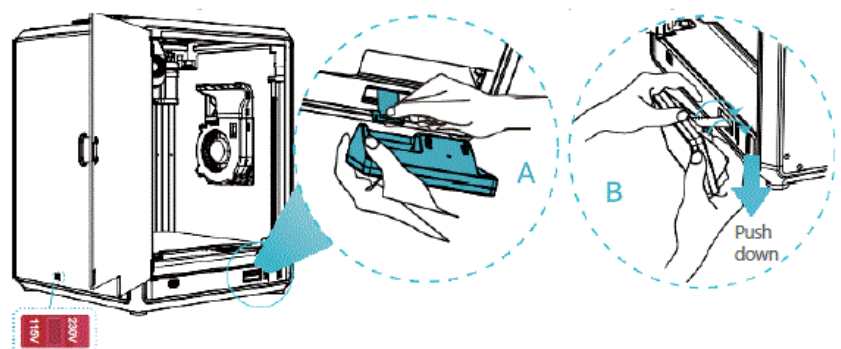
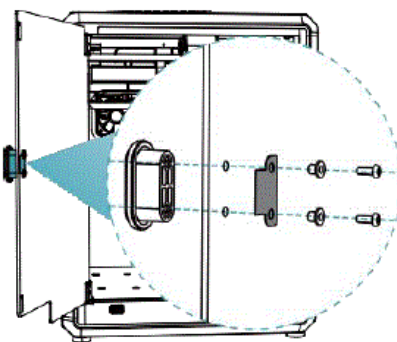
- Take out the power cord
- Move the chain to one side in the direction indicated by the arrow
- Finally, take the grey foam as shown.

⑤



Install the Product

1. Install the door handle on the front door as shown in the diagram.
2. Take the touch screen out of the toolbox and connect the touch screen to the flat cable extended from the base according to Figure A. Then snap the touch screen into the slot in the baseplate, as shown in Figure B. (The direction is as shown in the figure; otherwise, the screen interface may be damaged.)



Caution

- Please ensure the correct position for the power supply switch and mains before supply connection, in order to avoid damage to the device.
- If the mains between 100V and 120V, please select the 115V for the power supply switch with a straight screwdriver.
- If the mains between 200V and 240V, please select the 230V for the power

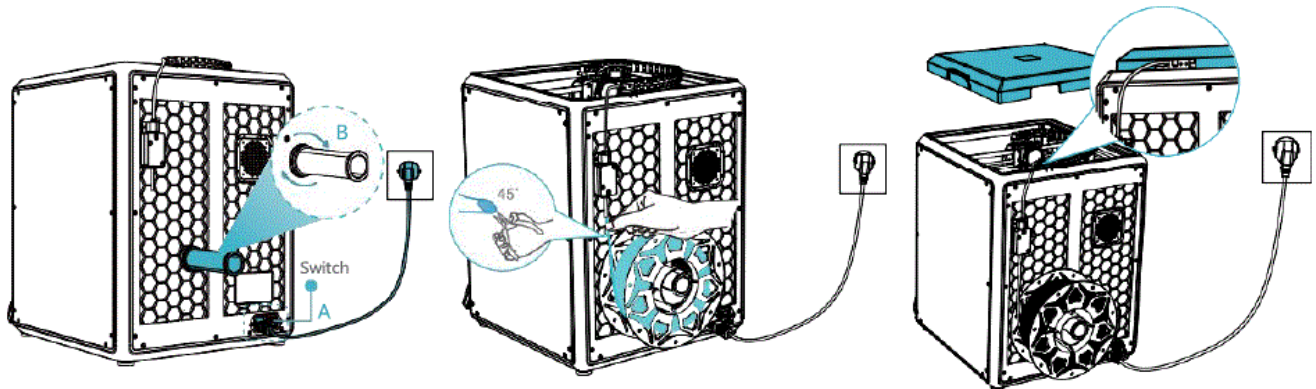
supply switch (default is 230V) with a straight screwdriver.

3. **A:** Connection and power on.

B: Install the material barrel.

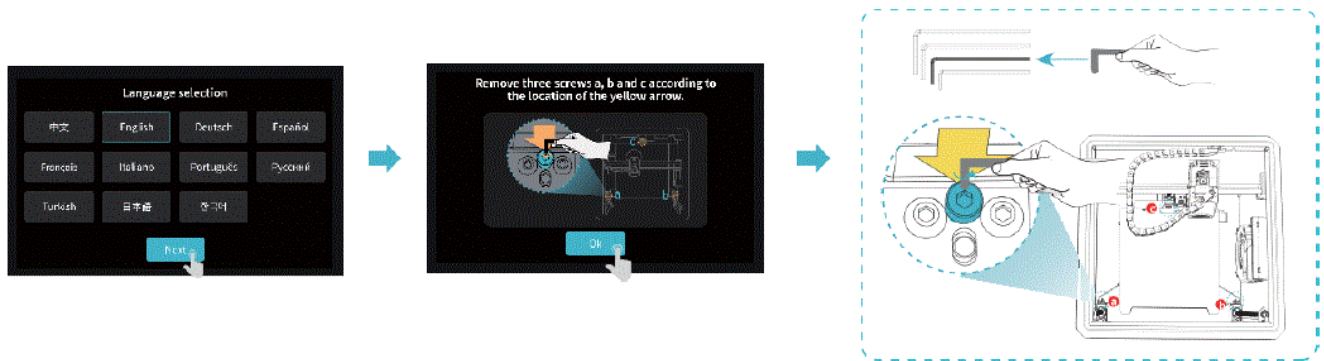
4. Load filaments. (Insert the filaments into the deepest part of Teflon tube until it cannot be moved.)

5. Install the top cover.

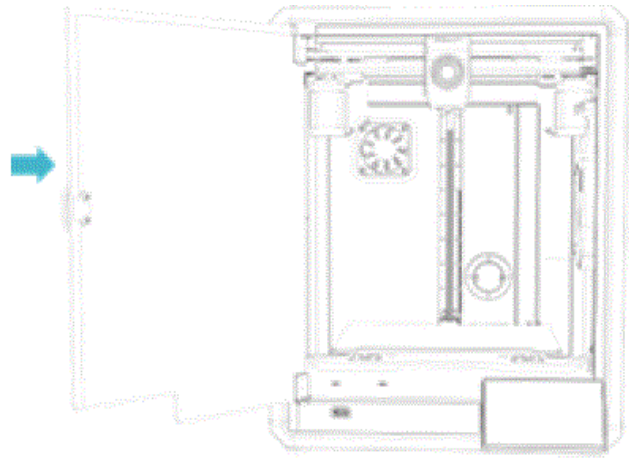
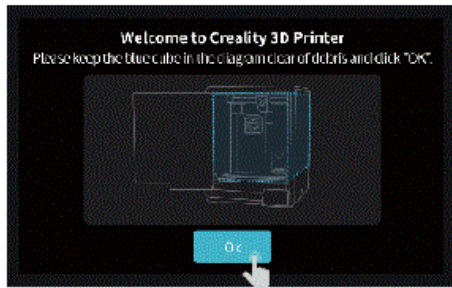


Caution

1. When -printing -low: temperature fitment as PLA and flexible filaments, remove the clear top cover if the room temperature exceeds 300C.
 2. When printing high melting-point filaments such as non-PLA and non-flexible filaments, be sure to keep the forming chamber temperature with the clear top cover closed to avoid cracking of the mould.
6. Select the language and click “Next”, Remove three screws a, b and c according to position indicated by the yellow arrow. click “OK” on the screen.

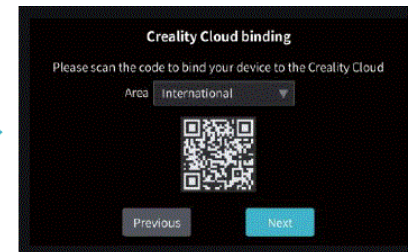
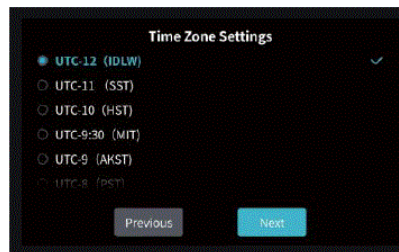
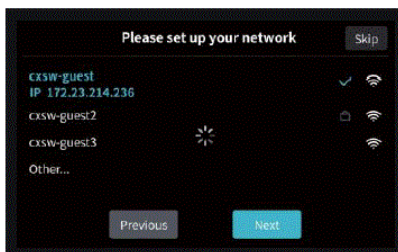


7. keep the blue cube in the figure clean of debris and the click ok

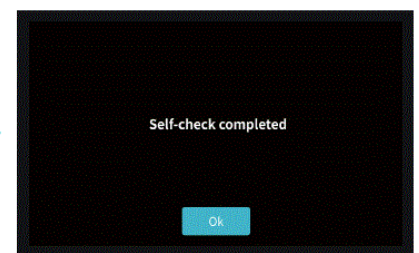
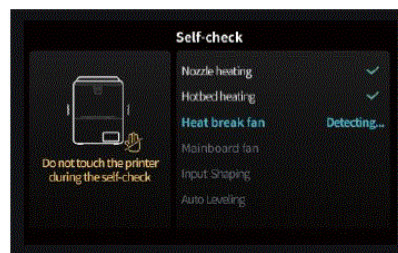
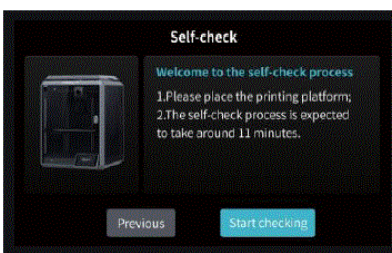


Power-on guide

1. Network Settings
2. Time Zone Settings
3. Creality Cloud binding



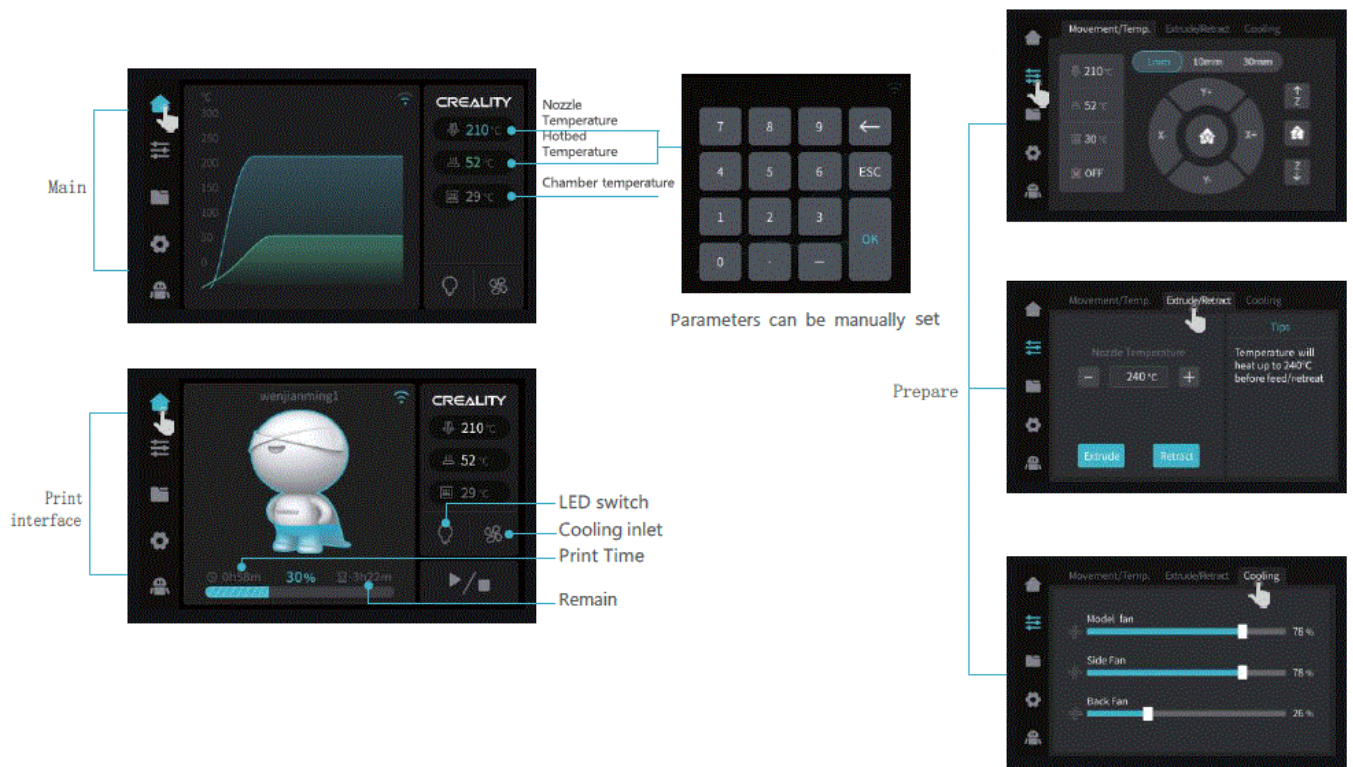
4. Self-inspection
5. Self-testing
6. Self-test completed



- **Reminder:** When the printing time of the device exceeds 300 hours, or if the printing platform or nozzles have been replaced, the distance between the platform and nozzles may change that caused the first layer of the model may not stick firmly, resulting in printing failure. Please calibrate the platform regularly.
- **Note:** The current interface is for reference only. Due to the continuous upgrading of functions, it shall be subject to the latest firmware UI published on the official website.

About the User Interface

Tune, Prepare



Note: The current interface is for reference only. Due to the continuous upgrading of functions, it shall be subject to the latest firmware UI published on the official website.

Files

1. Local model

Tips: Choosing print calibration can improve print quality

2. Press and hold on the model to multi-select and copy it to a USB flash drive



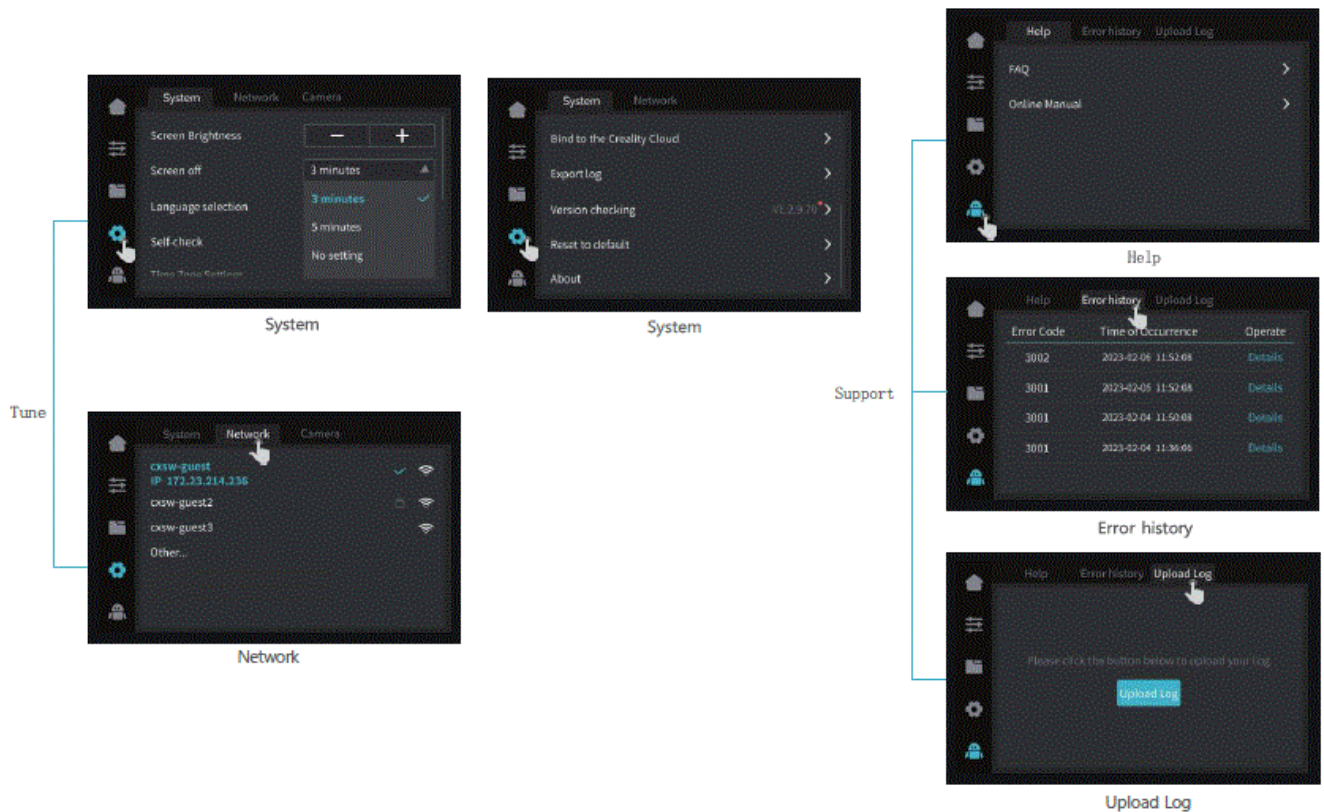
3. USB flash drive model

4. History



Note: The current interface is for reference only. Due to the continuous upgrading of functions, it shall be subject to the latest firmware UI published on the official website.

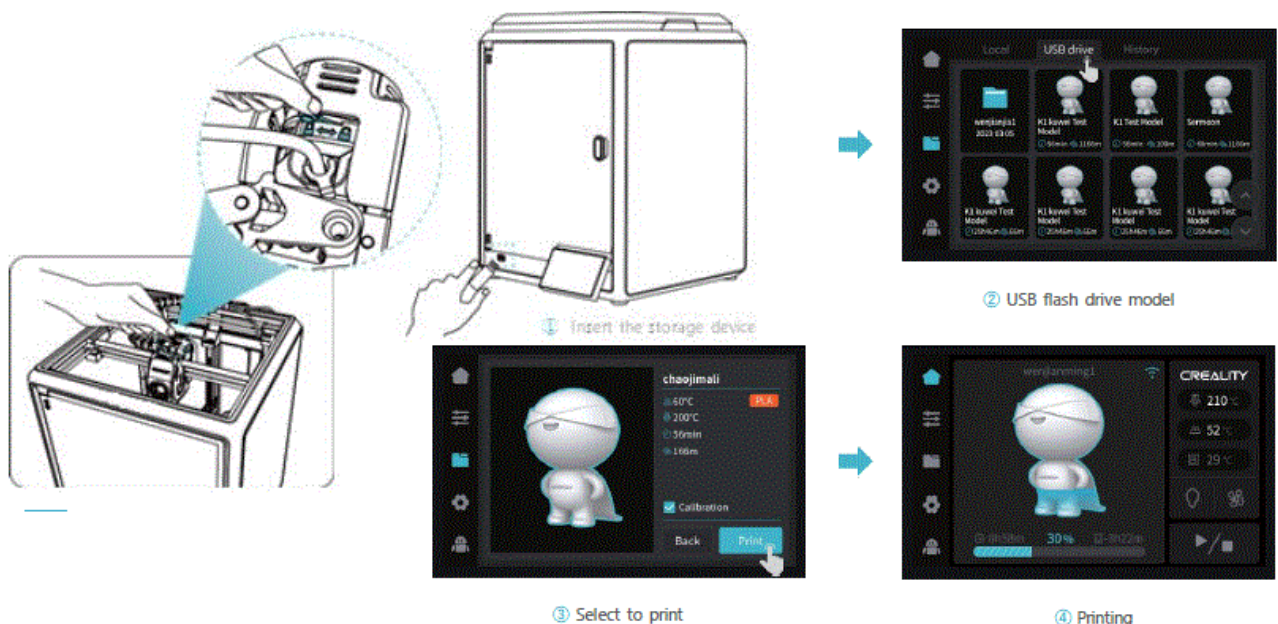
Tune, Support



Note: The current interface is for reference only. Due to the continuous upgrading of functions, it shall be subject to the latest firmware UI published on the official website.

First Printing

USB flash disk Printing



- **Note:** Keep the Extrusion switch lock before printing.
- **Note:** The current interface is for reference only. Due to the continuous upgrading of functions, it shall be subject to the latest firmware UI published on the official website.

LAN Printing

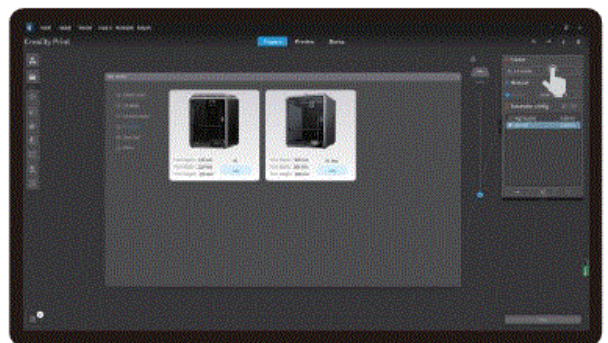
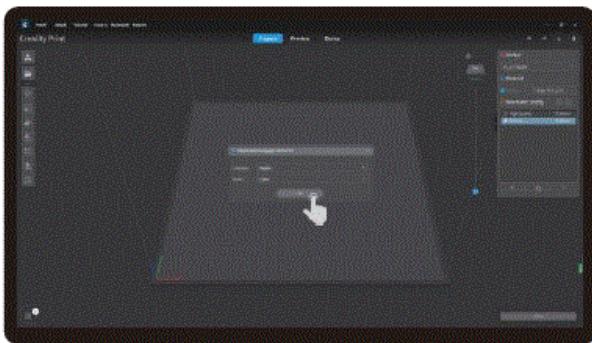
Software Print



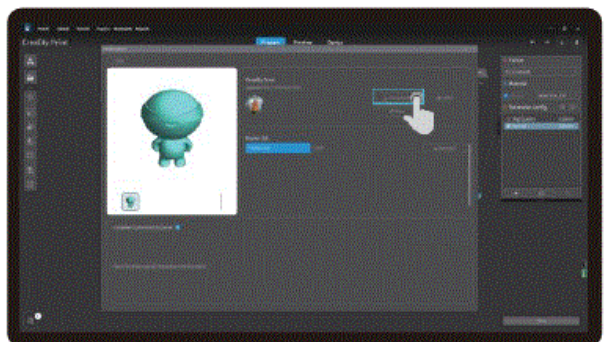
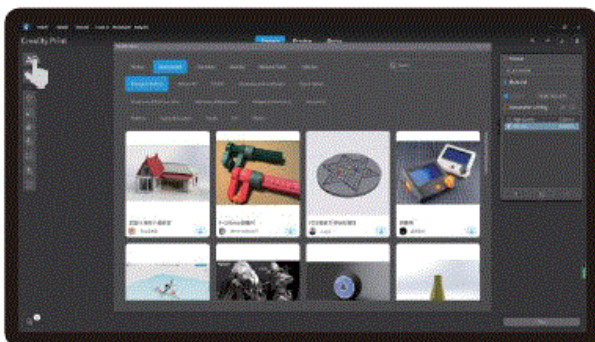
1. Find the software on a USB flash drive and install it.

Tips: the computer must be in the same local area network as the printer

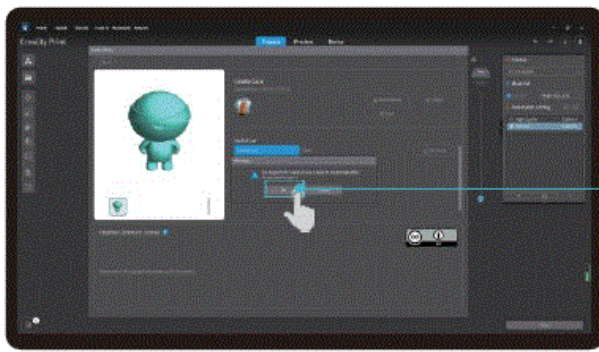
2. Choose a language and region
3. Choose a Printer



4. Click on “Model Library” and select the model file
5. Select to download the model

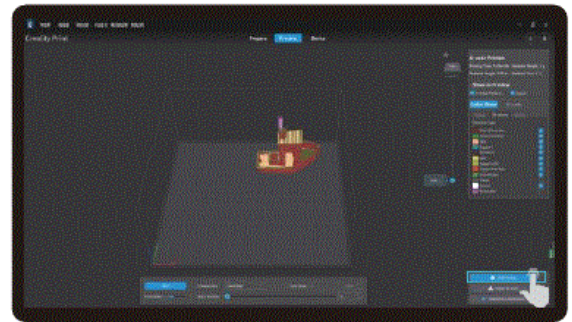
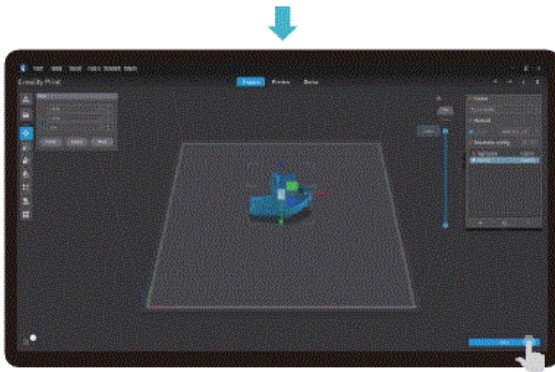


Note: The current interface is for reference only. Due to the continuous upgrading of functions, it shall be subject to the latest firmware UI- published on the official website.



Scan the QR code and download the app

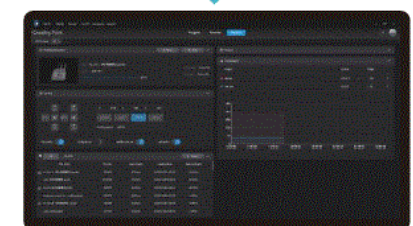
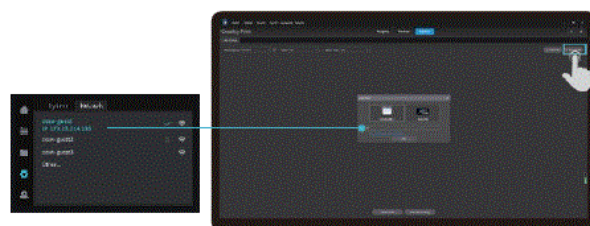
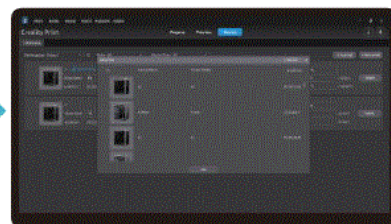
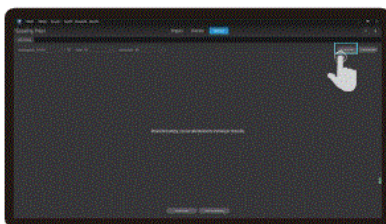
6. Log into a Creality Cloud account



7. Start slicing

8. Selection of LAN printing

9. Add a device: a. Add by scanning -o Select a device



10. Add a device: b. Add a device by manually entering the IP address

11. Device List

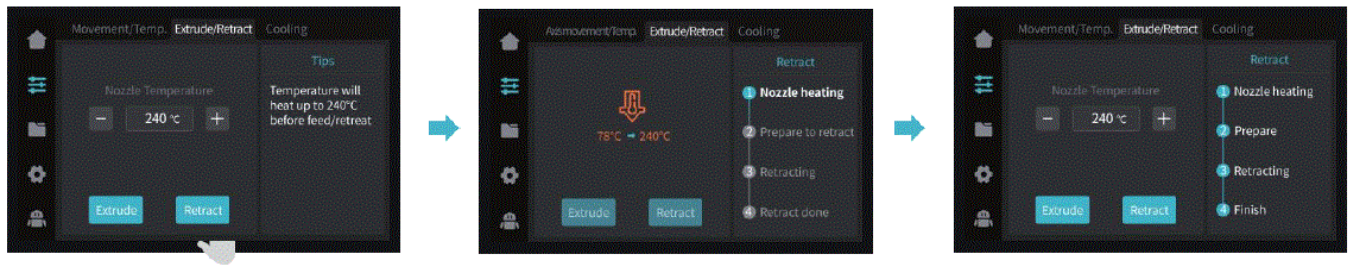
12. Device Details

Functional Specification

Extrude, Filament Retreat

Extrude

Filament Retreat



Note: The current interface is for reference only. Due to the continuous upgrading of functions, it shall be subject to the latest firmware UI published on the official website.

Tips and Routine Maintenance

If any of the above problems arise and cannot be resolved:

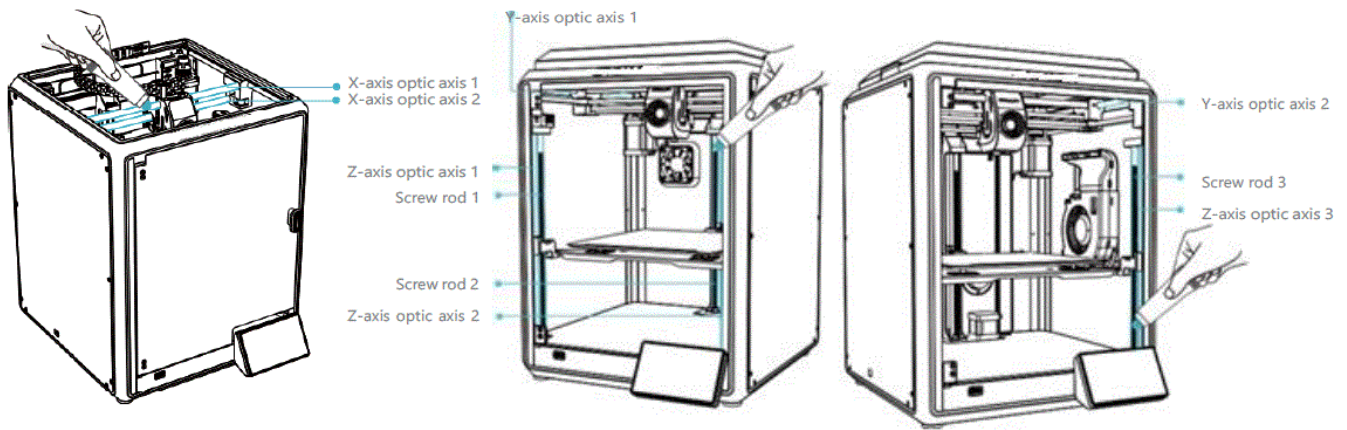
Maintenance Items

	Maintenance instructions	
Machine cleanup	Clean the debris inside the machine to ensure that its operation is not affected.	Before each print
Hot end	Solution to extruder blockage: After preheating and removing the filaments, raise the temperature of the extruder and poke into the extruder from top to bottom using an extruder cleaner until the blocked filaments are poked out.	After extruder blockage
	Replace the nozzle.	Cumulative print time per 500 hours
	Check if the wire output is normal, if not, please check if the extruder is blocked.	After each change of filaments
	Check the nozzle for filament residue, if so, heat the nozzle and remove it with a tool.	Before each print

Printing platform	Check the surface of the platform for residual filaments and glue, if so, clean the surface of the platform.	Before each print
Motion mechanism	XYZ optic axis lubrication.	Cumulative print time per 500 hours
Equipment self-test	Axis movement.	Cumulative print time per 300 hours
	Optimization of vibration veins.	
	Auto Leveling.	
Filament replacement	Replacement of filaments of the same kind: follow the normal Retreat – Feed process.	/
	Replacement of different filaments: Preheat the nozzle to reach the target temperature of the current filament; then retreat it, replace with the target filament, and preheat the nozzle to the higher filament extrude temperature of the two filaments; feed for 30s until the filament has been completely extruded, and finally set the nozzle temperature to the temperature of current filament nozzle.	

Precautions for printing

Lubrication and maintenance

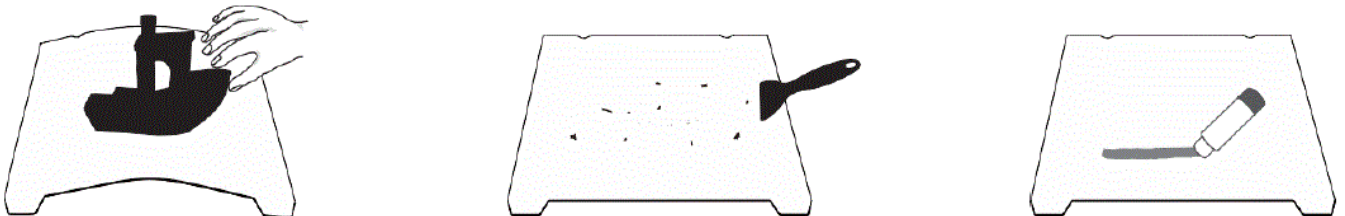


Tips: please grease and lubricate the designated areas regularly (as shown in the picture). (Users may buy the grease themselves for machine maintenance)

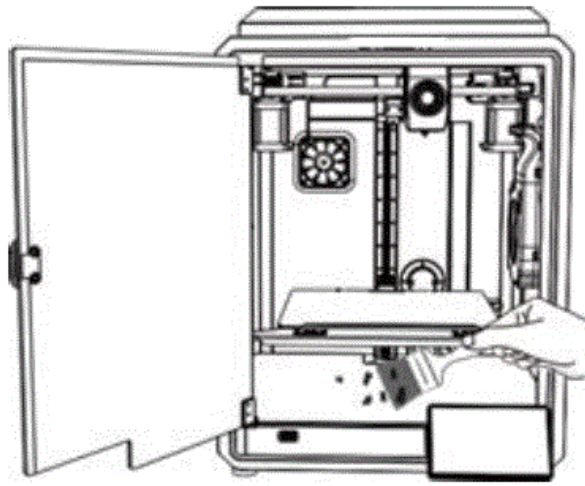
Use and maintenance of flexible platform

1. Together with the flexible platform after the printed model has been cooled down Remove from the device and partially bend the platform slightly to separate the model from the platform.(No excessive bending of the platform to prevent it from being deformed and unusable)
2. The residue of the platform filaments can be scraped off with a blade. Be cautious of safety when using.
3. When the first layer of the model is not glued, it is recommended to apply glue stick evenly on the surface of the platform.

Cleaning of debris inside the chassis

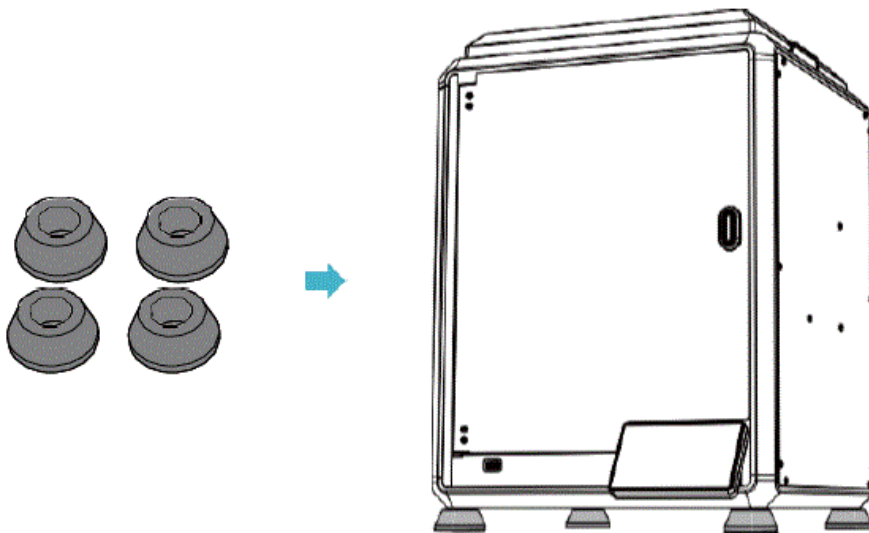


Reminder. Since the printing platform is quick wear, it is recommended to replace the printing platform regularly to ensure that the first layer of the model is adhered.



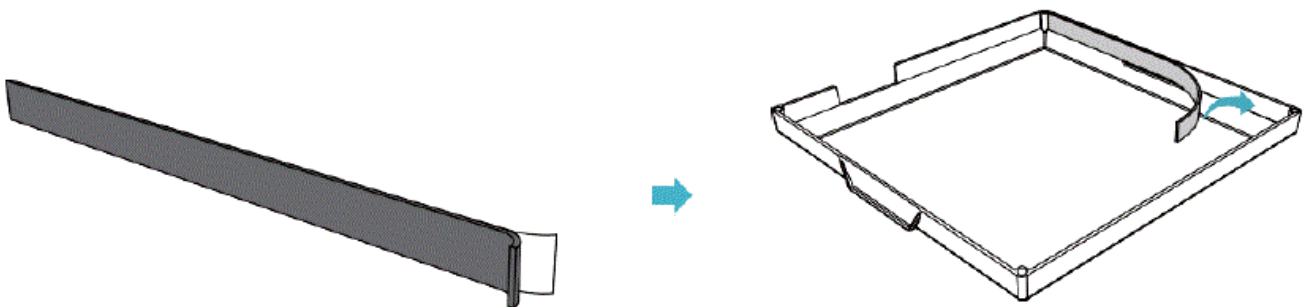
Installation of Damping Pads

The Damping Pads can improve the stability of printer during the printing. The specific installation method is as shown in the figure below:



Installation of EVA strips

Suggest attaching EVA strips inside the top cover edge during the testing phase to avoid noise caused by chain collision.



FCC Statement

FCC Caution

Any Changes or modifications not expressly approved by the party responsible for compliance could void the user's authority to operate the equipment.

This device complies with part 15 of the FCC Rules. Operation is subject to the following two conditions:

1. This device may not cause harmful interference, and
2. This device must accept any interference received, including interference that may cause undesired operation.

IMPORTANT NOTE

Note: This equipment has been tested and found to comply with the limits for a Class B digital device, pursuant to part 15 of the FCC Rules. These limits are designed to provide reasonable protection against harmful interference in a residential installation. This equipment generates, uses and can radiate radio frequency energy and, if not installed and used in accordance with the instructions, may cause harmful interference to radio communications. However, there is no guarantee that interference will not occur in a particular installation. If this equipment does cause harmful interference to radio or television reception, which can be determined by turning the equipment off and on, the user is encouraged to try to correct the interference by one or more of the following measures:

- Reorient or relocate the receiving antenna.
- Increase the separation between the equipment and receiver.
- Connect the equipment into an outlet on a circuit different from that to which the receiver is connected.
- Consult the or an experienced technician help.

FCC Radiation Exposure Statement

- This equipment complies with FCC radiation exposure limits set forth for an uncontrolled environment.
- This equipment should be installed and operated with minimum distance 20cm between the radiator& your body

Frequently Asked Questions

What should I do if the printer body needs cleaning?

Clean the printer body with a dry cloth regularly after powering off the printer to wipe away dust, bonded print filament, and foreign objects on the guide rails.


Can children use the printer unsupervised?

Children under 10 years old should not use the printer without supervision to avoid personal injury.

How should I handle plugging or unplugging wires?

Do not plug or unplug wires on a charged basis to prevent accidents.

Documents / Resources

	CREALITY SHAPE F 600 01 Max 3D Printer [pdf] User Manual SHAPE F 600 01 Max 3D Printer, SHAPE F 600 01, Max 3D Printer, 3D Printer
---	---

References

- [User Manual](#)

3D Printer, Creality, Max 3D Printer, SHAPE F 600 01, SHAPE F 600 01 Max 3D

Creality Printer

Leave a comment

Your email address will not be published. Required fields are marked *

Comment *

Name

Email

Website

☐ Save my name, email, and website in this browser for the next time I comment.

Post Comment

Search:

e.g. whirlpool wrf535swhz

Search

[Manuals+](#) | [Upload](#) | [Deep Search](#) | [Privacy Policy](#) | [@manuals.plus](#) | [YouTube](#)

This website is an independent publication and is neither affiliated with nor endorsed by any of the trademark owners. The "Bluetooth®" word mark and logos are registered trademarks owned by Bluetooth SIG, Inc. The "Wi-Fi®" word mark and logos are registered trademarks owned by the Wi-Fi Alliance. Any use of these marks on this website does not imply any affiliation with or endorsement.