




CREALITY CR-10 S4 Large Format 3D Printer User Guide

[Home](#) » [Creality](#) » CREALITY CR-10 S4 Large Format 3D Printer User Guide 

CREALITY

Contents

- [1 CREALITY CR-10 S4 Large Format 3D Printer User Guide](#)
- [2 1. Introduction](#)
- [3 2. General List](#)
- [4 3. Device Installation](#)
- [5 4. Screen Information](#)
- [6 5. Loading Filament](#)
- [7 6. Bed Leveling](#)
- [8 7. Software Installation](#)
- [9 8. For the first Printing](#)
- [10 9. Trouble shooting](#)
- [11 10. After- Sales Service](#)
- [12 Read More About This Manual & Download PDF:](#)
- [13 Documents / Resources](#)
 - [13.1 References](#)

CREALITY CR-10 S4 Large Format 3D Printer User Guide



This guide is for the CR- 10 Series of 3D printers. It is also applicable for the CR-I OS/CR-IO S4/CR-IO SS. Among them, CR-I() mini without T -Bracket (Right) & Decoration Strip.

Due to the different types of device in the hardware and software upgrade industry. the products are slightly different and it is a noemal phenomenon. Subject to actual product received.

Detailed instructions for use are available on the SD card.

Notes

1. Do not use the Printer in any other way than described herein to avoid personal injury or property damage.
2. Do not place the Printer near flammables, explosives or heat sources. It is best to place it in a well- ventilated, low-dust environment.
3. Do not expose the Printer to violent vibration or any unstable environment. This will cause poor print quality.
4. The filaments recommended by the manufacturer are preferred as to avoid clogging in the extrusion head or Printer damage.
5. Do not use any other power cable except the one supplied. Use a grounded three-prong power outlet.
6. Do not touch the nozzle or hot bed during printing. Keep hands away from machine while in use to avoid burns or personal injury.
7. Do not wear gloves or loose clothing when operating the Printer. Preventing the movable parts from being involved in the squeeze or cutting injury to hunman boday or printer damage.
8. Clean off filament from the nozzle tip with the provided pliers before the nozzle cools. Do not touch the nozzle directly. This can cause personal injury.
9. Clean the Printer frequently. With the machine powered off, c lean the printer body with a dry cloth to remove dust, adhered printing materials and foreign objects on guide rails. Use glass cleaner or isopropyl Alcohol to clean the print surface before every print for consistent results.
10. Children under 10 years of age should not use the Printer without supervision.

Preface

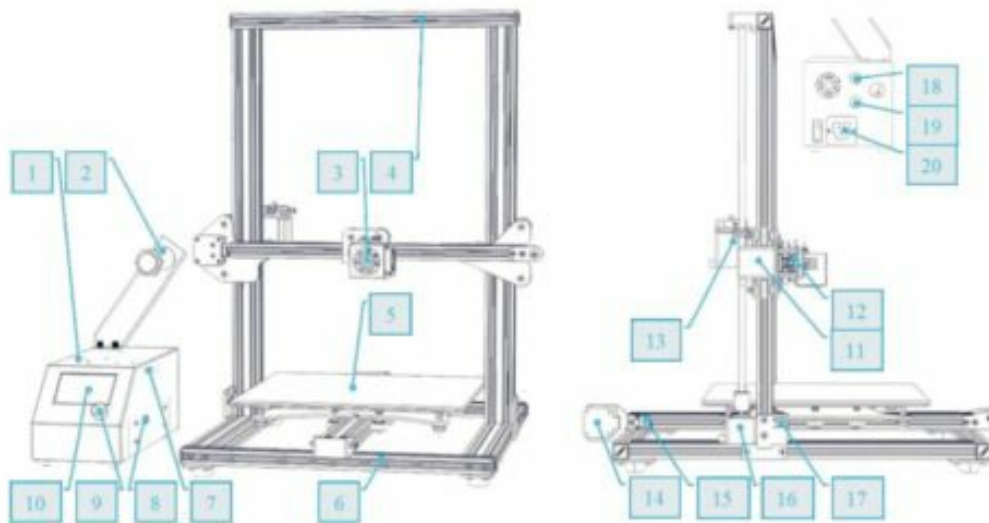
Dear consumers,

Thank you for choosing our products. For the best experience, please read the instructions before operating the Printer. Our 31) team is always ready to provide you with assistance. Please contact us via the phone number or e-mail address provided at the end when you encounter any problem with the Printer.

For a better experience in using our product, you may learn how to use the Printer in the following ways:

1. View the accompanied instructions and videos on the SD card.
2. Visit our official website at www.creativ3d.cn. You will find relevant software/Hardware information, contact details and operation and Maintenance instructions on the website.

1. Introduction



- | | | | |
|--------------------|-------------------------|--------------------------|--------------------------------|
| 1. Control Box | 6. Base Frame | 11. X Stepper | 16. Z Stepper |
| 2. Spool Holder | 7. SD Slot and USB Port | 12. X Limit Switch | 17. Z Limit Switch |
| 3. Nozzle Assembly | 8. Voltage Selection | 13. Extruder (E) Stepper | 18. Nozzle Assembly Connection |
| 4. Z Gantry Frame | 9. Control Knob | 14. Y Stepper | 19. Hot Bed Connection |
| 5. Print Surface | 10. Display Screen | 15. Y Limit Switch | 20. Power Cable Connection |

2. General List



Base Frame



Gantry Frame



Control Box



Tool Kit



Tool List

No.	Image	Name	Qty	No.	Image	Name	Qty	No.	Image	Name	Qty
1		Spool Holder w/ Nut	1	7		M5X25 Bolt and Lock Washer	4 sets	13		Scraper	1
2		Spool Holder Bracket	1	8		Power Cable	1	14		Diagonal Pliers	1
3		Sample Filament (200g)	1	9		USB Cable	1	15		Hex keys, Wrench and Screwdriver	1 set
4		Thumb Screws	3	10		SD Card and Card Reader	1	16		Cable Ties	1 bundle
5		T-Bracket (Right)	1	11		PTEE Tubing (spare part)	1	17		Spare Parts	1
6		T-Bracket and Z-Limit Switch (Left)	1	12		Nozzle Cleaner	1	18		Decorative Trim	1

3. Device Installation

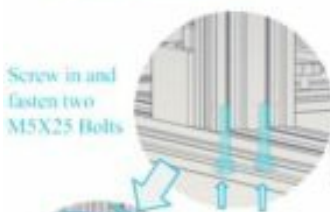
Install the Gantry Frame



Attach the Z Couplers



Insert the Teflon pipe into the quick connector



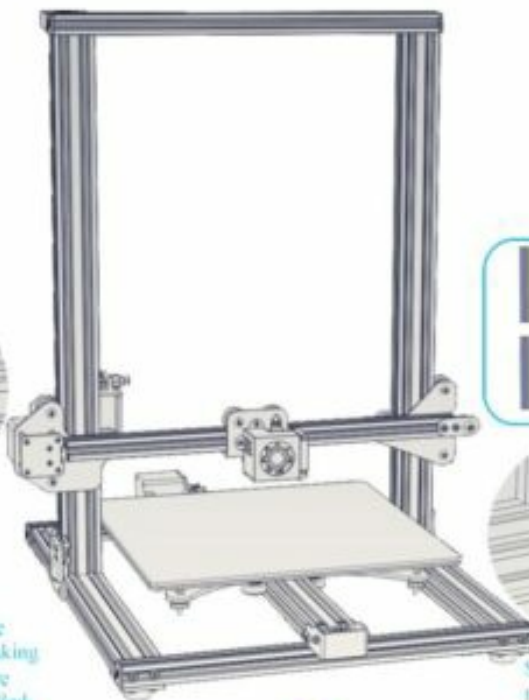
Screw in and fasten two M5X25 Bolts



Note: Make sure that the nut for profile has been turned by 90° before fastening the T-shaped fixing block.



Install left side T-Bracket, making sure T-Nuts are properly installed.

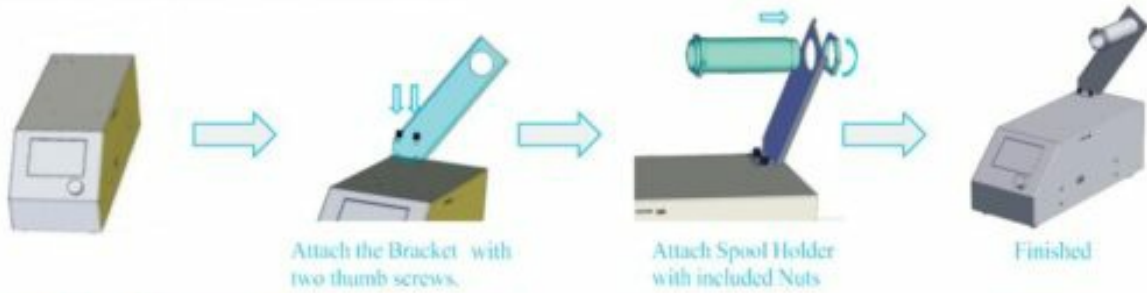


Screw in and fasten two M5X25 Bolts



Install right side

◆ **Install the Spool Holder and Bracket**



Attach the Bracket with two thumb screws.

Attach Spool Holder with included Nuts

Finished

◆ **Install the Decorative Trim**



Install the Decorative Trim into the notch, starting from one end.



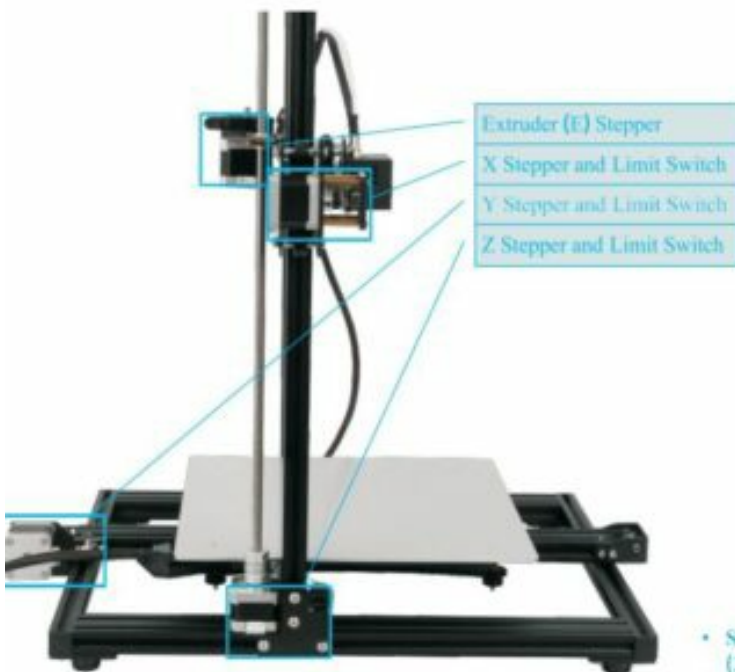
Cut off the excess material with the diagonal pliers



Attach the Decorative Trim to all parts needing to be decorated.

* The Decorative Trim is available in various colors. The pictures above are for reference only.
 * CR-10 mini without Decoration Strip.

◆ **cable connection**



Now your 3D printer is assembled!



Connect the Stepper Motors according to the yellow labels on the 4pin (4-wire) side.



Connect the Limit Switches according to the yellow labels on the 3pin (2-wire) side.



Connect the aviation connectors to the ports with corresponding pins

- Select the correct input voltage to match your local mains (220V or 110V)
- Damage can occur if voltage is set incorrectly
- Make sure the power cable is connected.

4. Screen Information

Information Displayed



Push: OK/Enter Sub Menu
Turn: Change Option/Value

Print speed

Device Model

CR-10 200° 30°
300 37° 34° 1%

X:000.0 Y:000.0 Z:+000.0
F: 100% 00:01

Heating...

Set temperature of the Nozzle

Current temperature of the Nozzle

Set temperature of the Hot Bed

Current temperature of the Hot Bed

Part Cooling Fan Speed

Current location of the nozzle

Print time

Print progress

Prompt message

Screen Options

Menu	Sub Menu	Explanation
[Info Screen]	[main]	Return
Prepare--	Disable Steppers	Moving X Y Z axis by your hands
	Auto Home	return to the origin
	Preheat PLA	
	Preheat ABS	
Control--	Cooldown	Close and cooldown the nozzle
	Move Axis--	Moving X Y Z axis or Extruder by given value.
Control--	Temperature--	Heat the nozzle and the bed or change fan speed by given value
	Restore Failsafe	Restore factory setting
No card /Print from SD		Select the printing model
Init. SD-Card /Change SD-Card		download or update the memory card information
Printing		
Tune--	Speed	Change Printing Speed by given value
	Nozzle	Change the temperature by given value
	Bed	Change the temperature by given value
	Fan Speed	Change Fan Speed by given value
	Flow	Change filament flow by given value
Pause Print		
Stop Print		

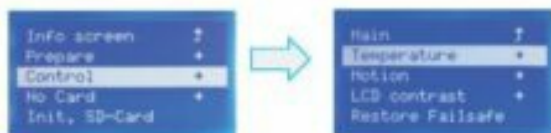
5. Loading Filament

1. Preheat

Method 1



Method 2



2. Feeding



Press and hold the extruder lever then insert 1,75mm filament through the small hole of the extruder. Continue feeding until you see filament come out the nozzle.

Tip: How to Replace the Filament ?

1. Cutting filament near the Extruder and slowly feed new filament until they are fed into the new filament.
2. Preheating the nozzle and withdraw the filament quickly and feed the new filament.

6. Bed Leveling



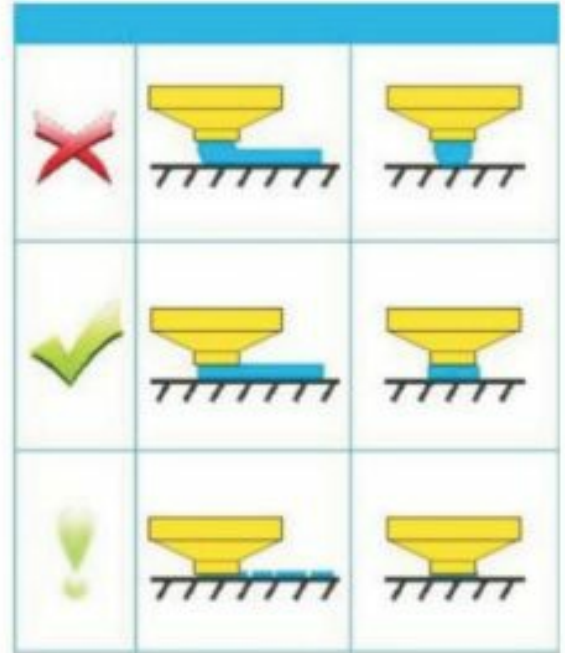
1. Prepare → Auto Home. Wait for the nozzle to move to the left/front of the platform.



2. Prepare → Disable Steppers (Close stepper drive, release motor)



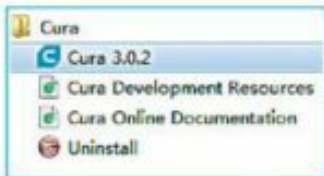
3. Move the nozzle the front/left leveling screw and adjust the platform height by turning the knob underneath. Use a piece of A4 paper (standard printer paper) to assist with the adjustment, making sure that the nozzle lightly scratches the paper.
4. Complete the adjustment of the screw on all 4 corners.
5. Repeat above steps 1-2 times if necessary.



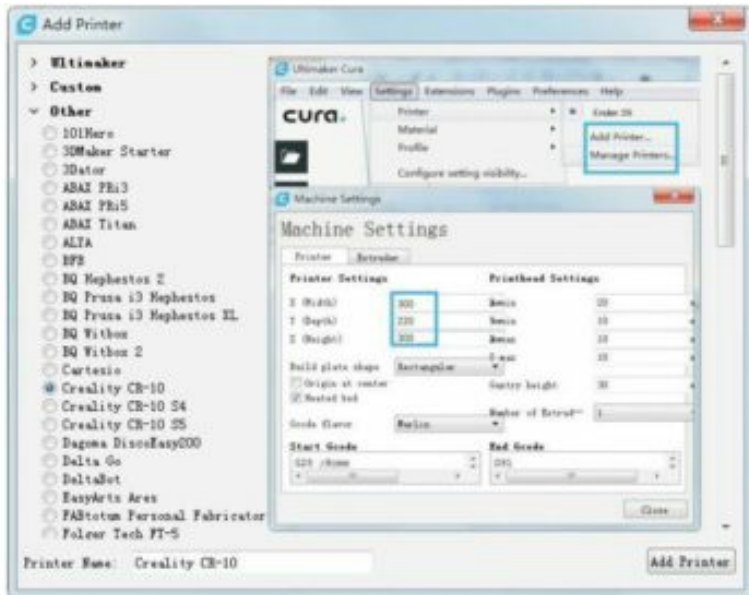
7. Software Installation



1. Double click the Cura icon to install the Cura Slicing Software.



2. Start Cura 3.0.2 from the Start Menu.



3. Select Other → Creality CR-10 → Add Printer.
4. If your machine model is CR-10Mini, Please select setting → printer → manage printer and modify the printer settings to (300,220,300)

8. For the first Printing

1. Slicing

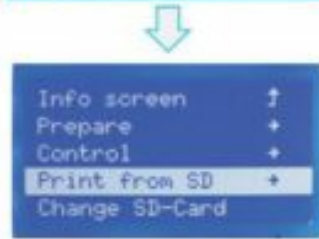
Insert SD card into computer with Reader.



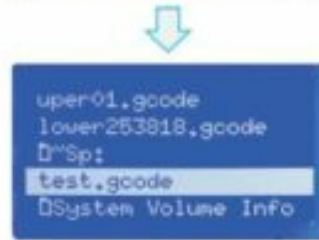
2. Printing



Insert the SD card

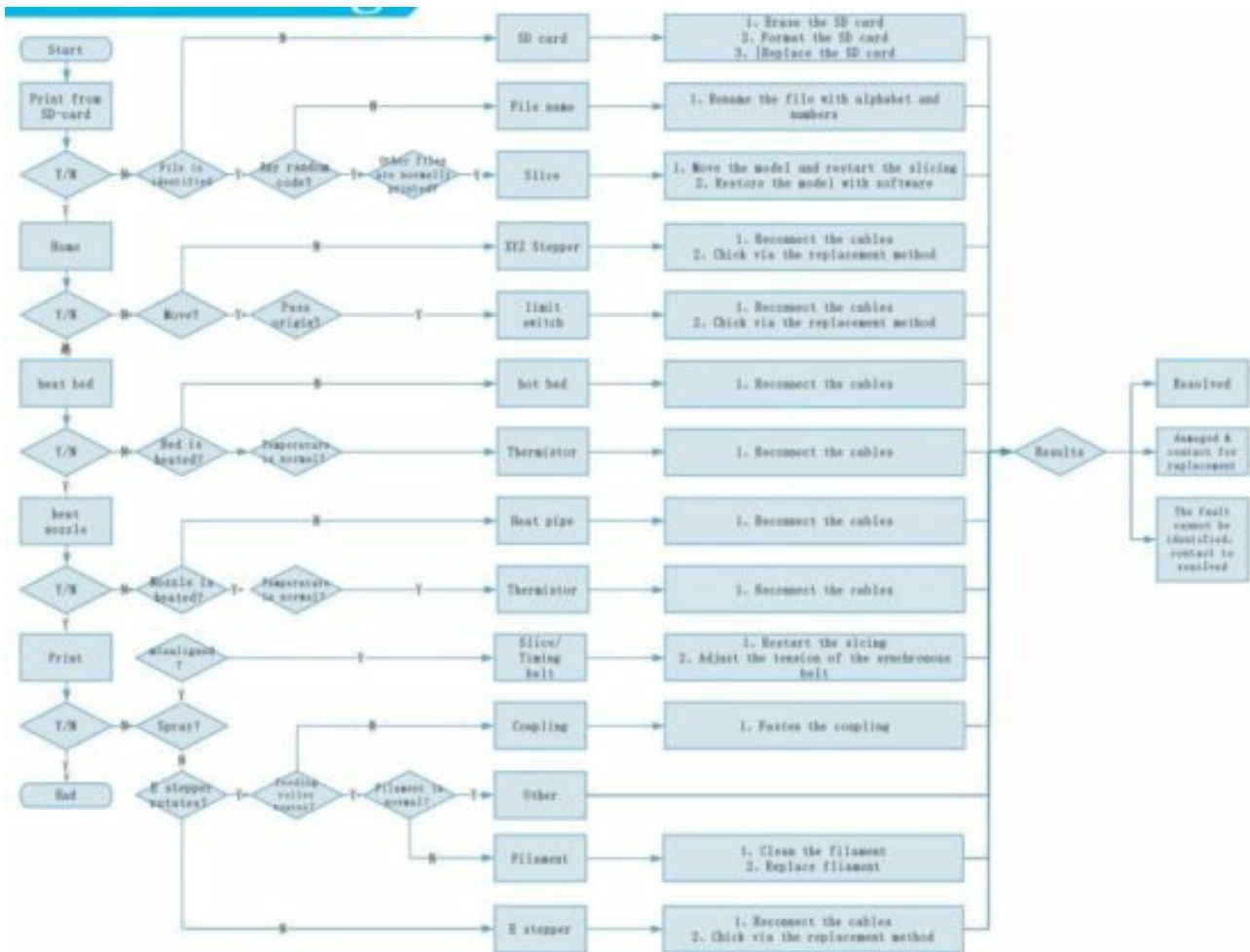


Select "Print from SD"



Select the file to be printed

9. Trouble shooting



10. After- Sales Service

After-Sales Service Terms

1. We provide a 12-month 'warranty/ on 3D) printers (excluding the nozzle assembly) purchased on or after January 1, 7 and a 3-nmonth warranty on the nozzle assembly thereof. Products purchased before January 1, 2017 whose warranty periods have not expired are subject to the original warranty terms.
2. The warranty period of each product starts from the date of production. Any product with renewed warranty period is subject to the renewed warranty terms.
3. Within the warranty period, we will provide free accessories to replace those damaged during the operation in accordance with the instructions use which are not caused by user negligence (determined by our professional assessment).
4. We will continue to provide warranty services tar any product having been repaired as long as its warranty period has not expired.
5. In case of any problem, you may find the solutions in the instructions for use or search for the solutions on Our Official website or contact us via phone or email.
6. We provide free remote technical support every consumer during the service lilt' of the product. You may request solutions from our alter-sales team via phone or email within working hours. For any request submitted beyond the normal working hours, we will reply as soon as possible. warranty service. Otherwise , warranty services may be refused.
7. We are entitled to refuse warranty claims for any fault or damage due to failure to follow instructions for use, including but not including to (i) unauthorized modification; (ii) incorrect installation or use: (iii) use of any third-party component: (iv) use of any non-specified software; (v) use of low-quality filament; (vi) use under non-specified environment; and (vii) misuse (overload) or improper maintenance (corrosion or oxidation).
8. We are entitled to refuse to provide warranty services for any fault or damage due to force majeure, including but not limited to fire, earthquake, lightning stroke, flood, violent conflict,
9. We provide after-sales services between 8:30 and 2 1 every day from Monday to Saturday, except official holidays.



Shenzhen Crealty 3D Technology CO.,LTD.

After Sales Service Tel: 400-6133 882


Official Website: www.crealty3d.cn

Company Address :

12F, Building No.3,JinchengyuanIndustrial Area, HuafanRoad,
Dalang, Longhua, Shenzhen, Guangdong Province

Read More About This Manual & Download PDF:

Documents / Resources

	<p>CREALITY CR-10 S4 Large Format 3D Printer [pdf] User Guide CR-10 S4 Large Format 3D Printer, CR-10 S4, Large Format 3D Printer, Format 3D Printer, 3D Printer</p>
---	--

References

- [User Manual](#)

[Manuals+](#), [Privacy Policy](#)

This website is an independent publication and is neither affiliated with nor endorsed by any of the trademark owners. The "Bluetooth®" word mark and logos are registered trademarks owned by Bluetooth SIG, Inc. The "Wi-Fi®" word mark and logos are registered trademarks owned by the Wi-Fi Alliance. Any use of these marks on this website does not imply any affiliation with or endorsement.