



CREALITY Auto Bed Leveling Sensor for 3D Printer User Guide

[Home](#) » [Creality](#) » CREALITY Auto Bed Leveling Sensor for 3D Printer User Guide 

CREALITY Auto Bed Leveling Sensor for 3D Printer



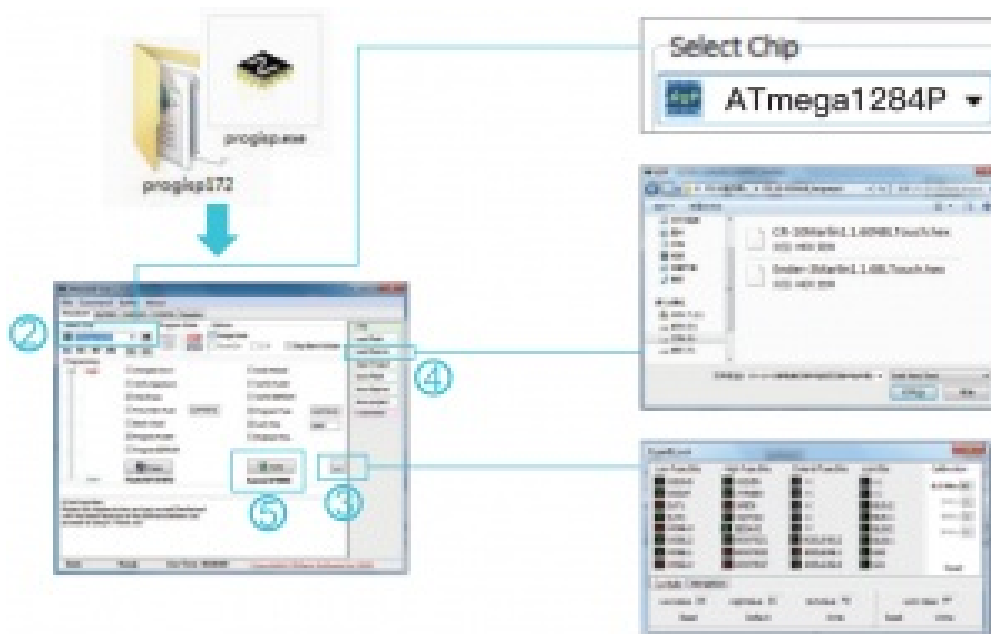
Contents

- [1 Packing List](#)
- [2 Circuit Principle](#)
- [3 Update Firmware](#)
- [4 Install BL Touch](#)
- [5 Circuit Wiring](#)
- [6 Platform Adjustment](#)
- [7 Software Settings](#)
- [8 Documents / Resources](#)
- [9 Related Posts](#)

Packing List

		
BL Touch	Connectors	Tie
		
Rack	Pinboard A	M3X82PCS
		
M3X6 2PCS	ISP Pinboard	Burner

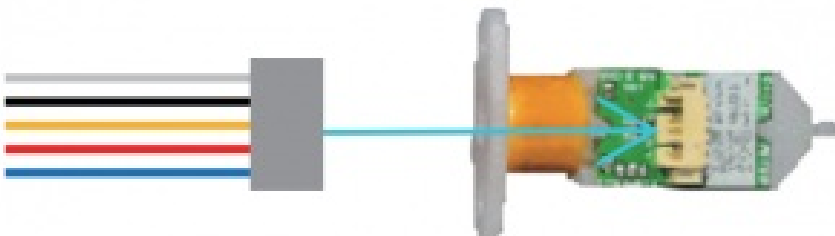
Circuit Principle



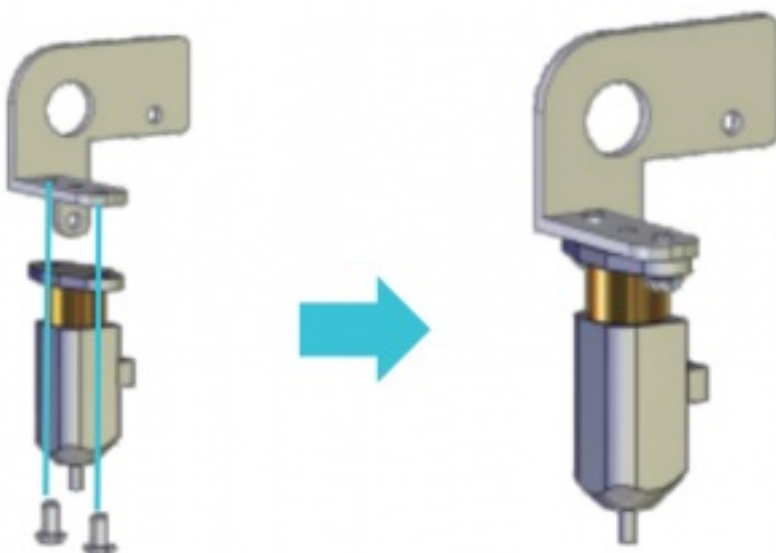
1. Open progisp.exe
2. Select Chip ATmega1284p.
3. Click ... —> Set Low Value=D6, HighValue=DC, ExtValue=FD—>Click Write and close the window.
4. Load Flash—>Select .hex 1 file.
5. Click Auto to update firmware, wait until it finishes, then close.
6. Unplug the ISP Pinboard from mainboard.

Install BL Touch

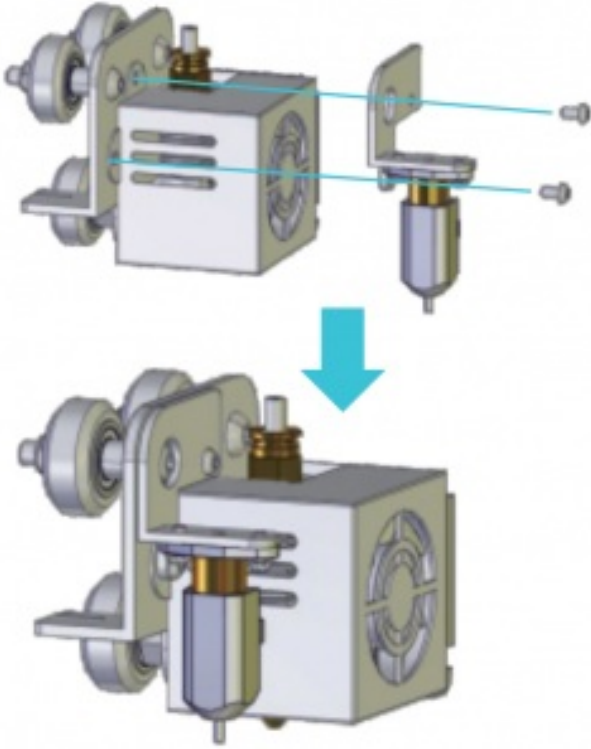
1. Insert connectors into 5 Pin Port.



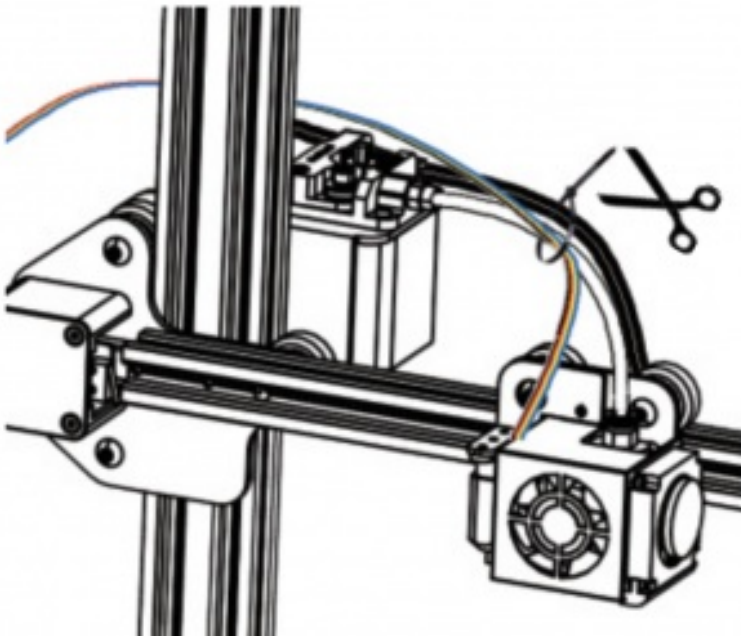
2. Install BL Touch on the rack with 2 M3X6 screws



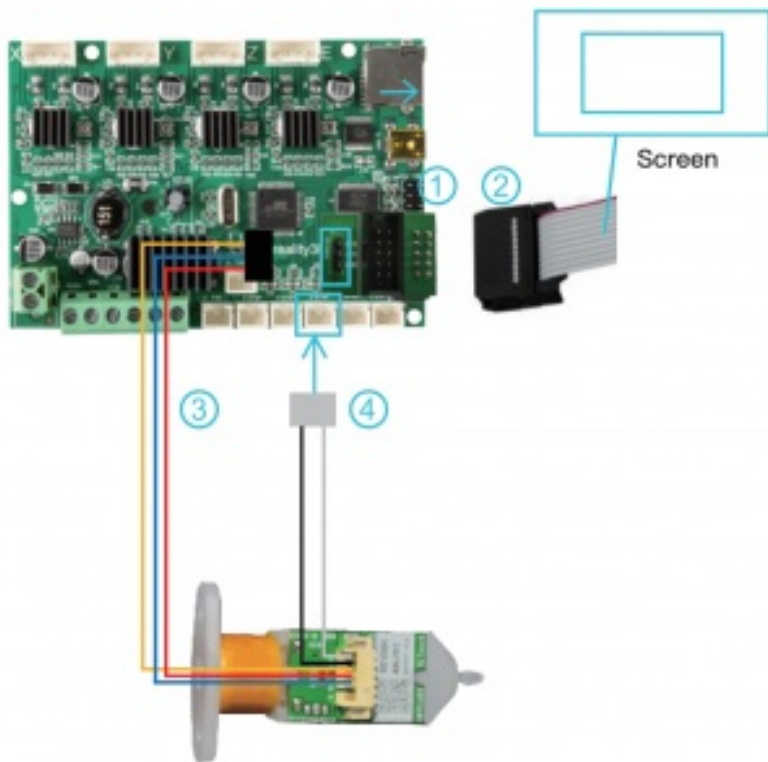
3. Loosen all fan cover screws, Install the frame on the corresponding position with 2 M3X8 screws



4. Secure the cable to the guide tube and cable with a cable tie and bypass the rear side of the gantry.



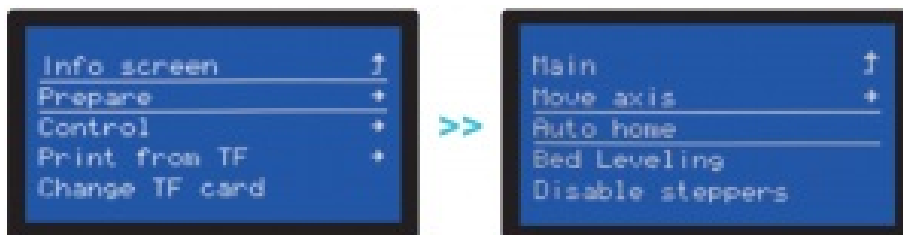
Circuit Wiring



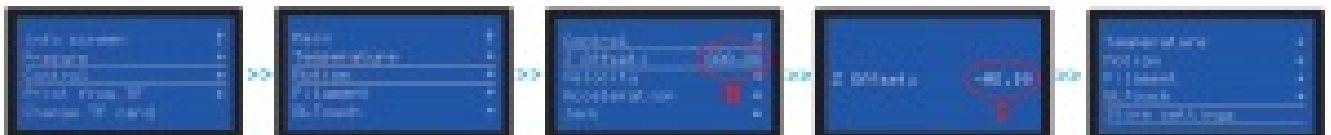
1. Unplug the screen cable, connect the Pinboard A to the screen port (EXP1).
2. Insert the screen cable into 10 pins port.
3. Insert the connectors to the 3 pins port as the sign shows.
4. Unplug the Z limit switch(Z-stop port),and insert the connectors.

Platform Adjustment

1. Prepare→Auto home, and wait until it stops.



2. Prepare→Move axis→Move Z→Move 0.1 mm→Rotate the knob until the distance between them is about 0.2mm (as a sheet of A4 paper) , write down the value of A.



3. Rotate the knob until the distance between them is about 0.2mm (as a sheet of A4 paper) , write down the value of A (**For example, figure 3**)

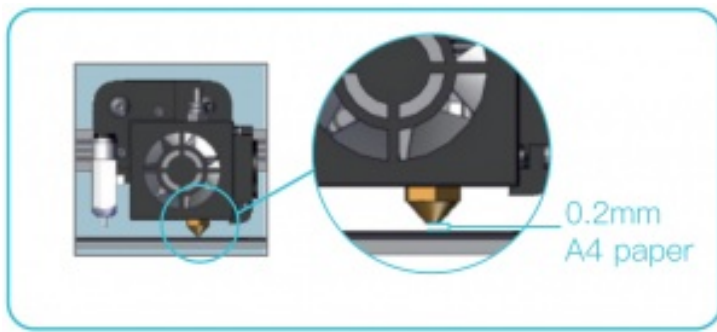
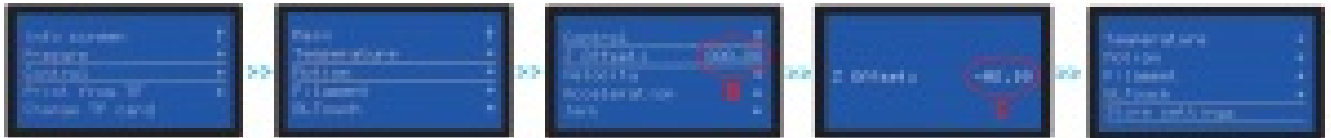
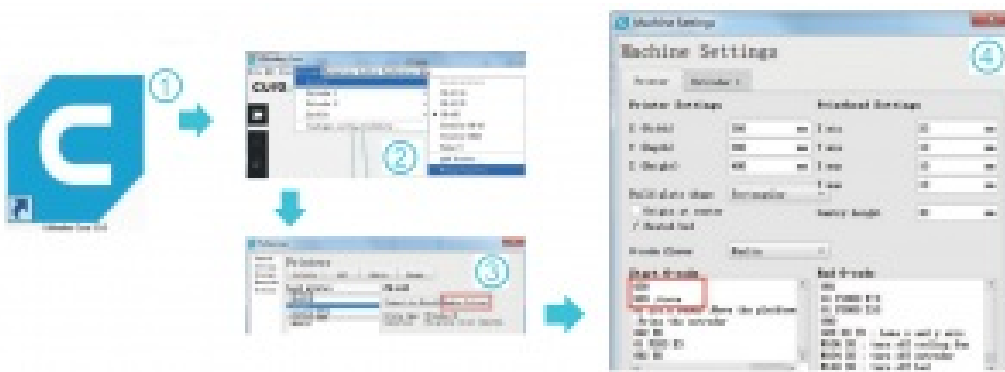


Figure3

4. Control→Motion→Z Offset→write down the value of B, then rotate the knob until it comes out as: $C=B+A$.
Return Control and Select Store settings.



Software Settings



1. Open Cura
2. Settings→ Printer-Manage Printers
3. Machine Settings
4. Change "G28" to "G28 G29"



Scan QR code to view detailed instruction

11F & Room 1201,Block 3,JinChengYuan,Tongsheng Community, Dalang, Longhua
District,Shenzhen,China,518109

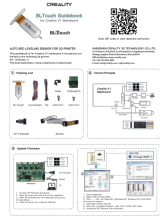
Official Website: www.creality.com

Tel: +86 755-8523 4565

E-mail: info@creality.com / cs@creality.com

CREALITY

Documents / Resources

	<p>CREALITY Auto Bed Leveling Sensor for 3D Printer [pdf] User Guide CREALITY, Bed Leveling Sensor, 3D Printer</p>
---	--

[Manuals+](#).