

[Skip to content](#)

## **Manuals+**

User Manuals Simplified.



# **Crabtree Havells 16A Wi-Fi Enabled Smart Socket User Manual**

[Home](#) » [Crabtree](#) » Crabtree Havells 16A Wi-Fi Enabled Smart Socket User Manual 

## **Contents**

[1 Crabtree ACST161603 16A Smart Socket User](#)

## **Manual**

[1.1 How to connect Smart Socket to Wi-Fi network](#)

[1.2 BLE Mode \(EZ Mode\) Configuration](#)

[1.3 Smart Configuration Mode \(Common\)](#)

[1.4 AP Mode Configuration](#)

[1.5 How to connect Smart Socket to Amazon Alexa](#)

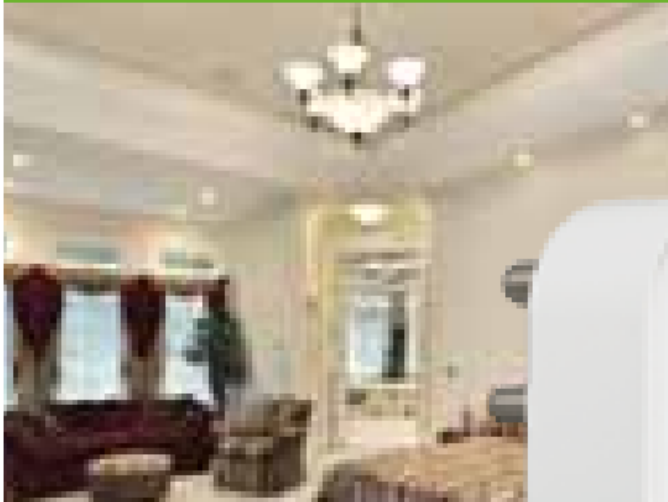
[1.6 Troubleshooting and FAQ](#)

[2 Documents / Resources](#)

[3 Related Posts](#)

**Crabtree ACST161603 16A Smart Socket User Manual**

# Switch on to a smarter life



## User Manual 16 A Smart Socket



**Model No. : ACST161603**

Input Voltage: AC 220 V-240 V

Output: 16 A Maximum Load (Resistive load)

Wireless Type: 2.4 GHz 1T1R

App Support: iOS / Android

Compatible with Alexa and Google Home

### How to connect Smart Socket to Wi-Fi network

1. Download HAVELLS Digi Tap from



or using the QR code for either iOS and

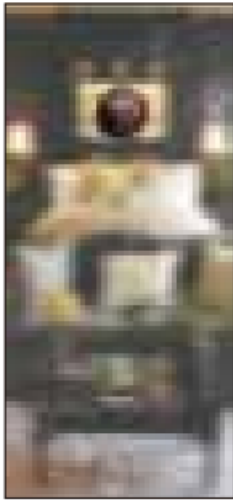


Android.

Once downloaded, the app will ask you to register your device. Enter your phone number or email. If you selected phone number, you will receive a text with a registration code. If you choose email, you will then create

a password.

Attention: There is no Registration Code needed if email method chosen.



Please note: There are three modes of configuration (BLE mode/Smart configuration/AP mode ) available for you to choose before adding the devices to app. BLE mode is recommended and this is default mode in the app.

### BLE Mode (EZ Mode) Configuration

1. BLE mode should be activated by pressing the power button for 6 seconds, LED will start blinking in blue color.
2. Tap the icon “+” on the top right corner of “Havells Digitap” App, there will a pop up asking for adding the Smart Socket.

Note: Phone’s Bluetooth should be ON.



3. Follow the app instructions to connect the Smart Socket to your Wi-Fi network.



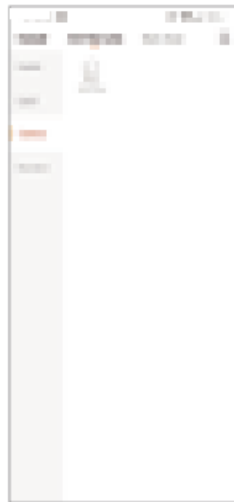
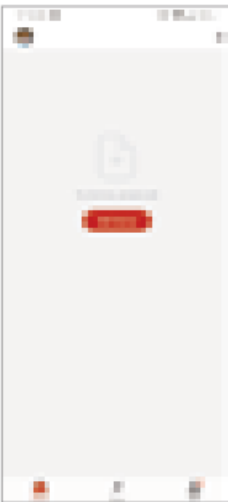
4. Once connected, the App will prompt the connection and click “Done”
5. Now you can control the loads which are connected to the Smart Socket through Havells Digitap App
6. Once the configuration is completed successfully, the indicator light will turn to solid blue and the device will be

added to the “Device List”.



### Smart Configuration Mode (Common)

1. Make sure Smart Configuration Mode is initiated: indicator light blinks blue rapidly (twice per second). If it blinks in blue color slowly (once every 3 seconds), press and hold the power button on the Smart Socket for 6 seconds until the indicator light blinks rapidly.
2. Tap the icon “+” on the top right corner of “HAVELLS Digi Tap”, choose Crabtree and then Smart Socket



3. Follow the in-app instructions to connect the Smart Socket to your Wi-Fi network.



4. Once connected, the App will prompt the connection, and click “Done”.
5. Now you can control the Smart Socket through “HAVELLS Digi Tap” APP.
6. Once the configuration is completed successfully, the indicator light will turn to solid blue and the device will be added to the “Device List”.

## AP Mode Configuration

(Only to be used if device is not recognised in smart configuration mode)

1. Make sure AP mode configuration is initiated on Smart Socket : the indicator light blinks blue slowly (once every 3 seconds). If it blinks blue rapidly (twice per second), press and hold the power button on the Smart Socket for 6 seconds until the indicator light blinks slowly.
2. Tap the icon “+” at the top right corner of “HAVELLS Digi Tap” tab and then select Smart Socket. Click “Other Mode” at top right corner. On the next page select AP mode.





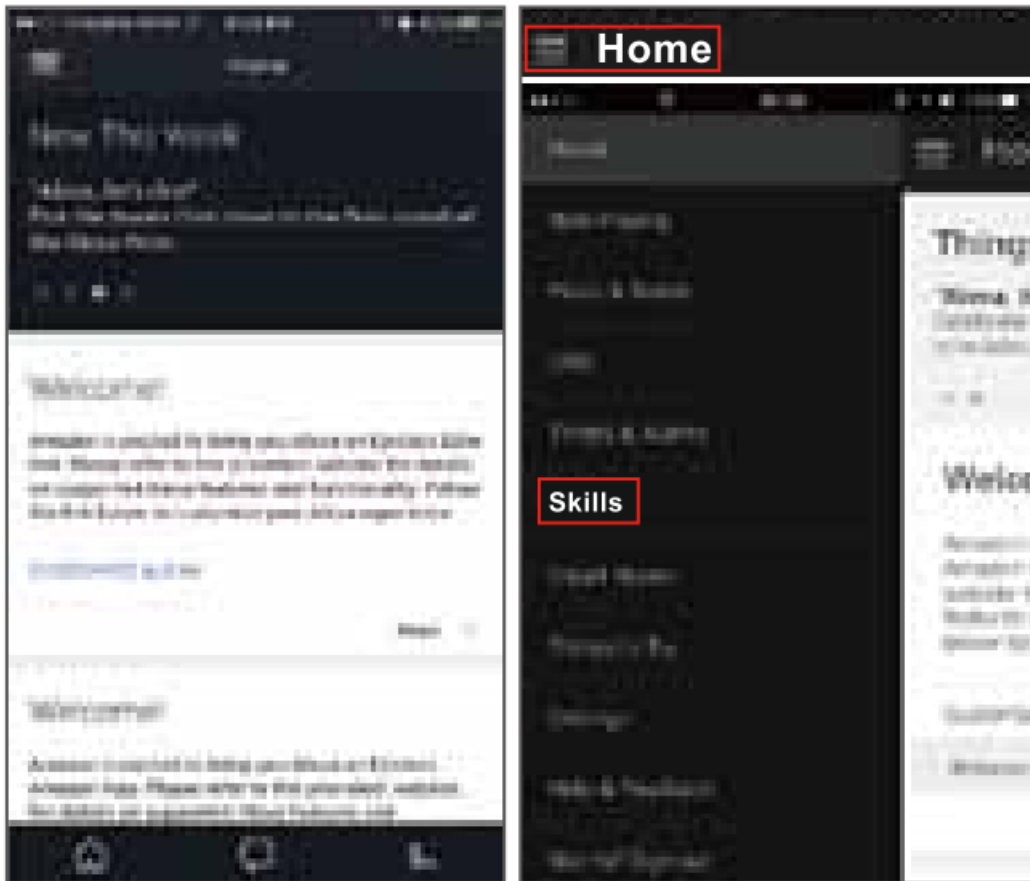
3. Follow the in-app instructions to connect the Smart Socket to your Wi-Fi network.



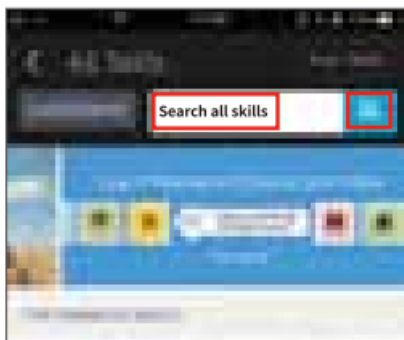
4. Once connected, the App will prompt the connection, and click “Done”.
5. Now you can control the Smart Socket through HAVELLS Digi Tap APP.
6. Once the configuration is completed successfully, the indicator light will turn to solid blue and the device will be added to the “Device List”.

## How to connect Smart Socket to Amazon Alexa

1. Launch HAVELLS Digi Tap App, sign in your account and make sure Smart Socket is in the device list.
2. Modify device name so that Alexa can easily recognize, such as: Living Room Light, Bedroom Light, etc.
3. Minimize HAVELLS Digi Tap App, then Launch the Alexa App and sign in to your Alexa account and make sure you have at least one Alexa voice-controlled device installed like Echo, Echo dot, etc.
4. In the upper left corner of Home page, click  button to show App menu. Then clicks  in the menu.



5. Type in HAVELLS Digi Tap in the search and click the search button next to it.



6. Click on (Enable) to enable HAVELLS Digi Tap to the skill, then sign in with HAVELLS Digi Tap account to complete the account linking.

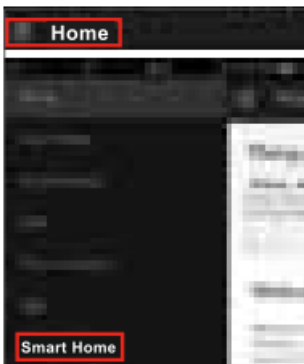




7. After linked account successfully, you can ask Alexa to discover devices. Alexa will show all the discovered devices after 20 seconds.



8. Go Back to Menu by clicking  button, and then click  button.



9. In Smart Home page, you can group your devices for different categories. Your HAVELLS Digi Tap APP has been skilled with Alexa. Now you can control your Smart Socket through Alexa.



## Troubleshooting and FAQ

### 1. What devices can I control with the Smart Socket ?

You can control lights, fans, portable heaters, and any small appliances in accordance with the Smart Socket 's specifications.

### 2. What should I do when I cannot turn Smart Socket on or off?

Make sure your mobile devices and the Smart Socket are connected to the same Wi-Fi network.

Make sure the devices connected to the Smart Socket are turned on.

### 3. What should I do when device configuration process has failed?

You could:

- Check whether the Smart Socket is powered on or not.
- Check whether your mobile device is connected to **2.4 GHz** WI-Fi network.
- Check your network connectivity. Make sure the router is working properly:  
**If the router is dual-band router, please select 2.4 G network**  
 and then add Smart Socket.  
 Enable the router's broadcasting function.  
 Configure the encryption method as WPA2-PSK and authorization type as AES, or set both as auto.  
 Wireless mode cannot be 802.11 only.
- Check for Wi-Fi interference or relocate the Smart Socket to another location within the signal range.
- Check whether the router's connected devices reach the amount limit. Please try to turn off some device's Wi-Fi function and configure Smart Socket again.
- Check if router's wireless MAC filtering functions in enabled. Remove the device from filter list and make sure the router is not prohibiting Smart Socket from connection.
- Make sure the password of your Wi-Fi network entered in App is correct when adding Smart Socket.
- Make sure the Smart Socket is in ready for App-Configuration the indicator light is quick blinking blue (twice per second) for Smart configuration Mode, slow blinking blue (once every 3 seconds) for AP mode configuration.  
 Repeat the App-configuration process.  
 Factory reset the Smart Socket and tries to add it again.

### 4. Can I control device through 2G/3G/4G cellular networks?

The Smart Socket and the mobile device are required to be under same Wi-Fi network when adding the Smart Socket for the first time. After successful device configuration, you can remotely control the device through 2G/3G/4G cellular networks.

### 5. How can I share my device with family?

Run the App HAVELLS Digi Tap, go to "Profile" -> "Device Sharing"-> "Sent", tap "Add Sharing", follow instructions on screen, now you can share the device with added family members.

### 6. How to reset this device?

Factory reset: After Smart Socket is Socket ged into a power socket, press and hold (for 6 seconds) the power button for factory reset until the indicator light blinks blue rapidly. Indicator lighting pattern:

Quick blinking blue (twice per second): Quick mode configuration is initiated.

Slow blinking blue (once every 3 seconds): AP mode configuration is initiated.

Solid blue: The Smart Socket is connected to the Wi-Fi network.

Off: The Smart Socket is switched off and no Wi-Fi network.





A **HAVELLS** Brand

**Havells India Ltd.**

Corp. Office: QRG Towers, 2D, Sector-126, Expressway, Noida-201304 (U.P),

Ph. +91-120-333 1000, Fax: +91-120-333 2000,

E-mail: [marketing@havells.com](mailto:marketing@havells.com), [www.crabtreeindia.com](http://www.crabtreeindia.com),

Consumer Care No.: 1800 11 0303 (All Connections),

011-4166 0303 (Land line),

(CIN) – L31900DL1983PLC016304

Copyright Subsists. Imitation of trade dress, graphics and color scheme of this document is a punishable offence.

**Documents / Resources**



**[Crabtree Havells 16A Wi-Fi Enabled Smart Socket](#)** [pdf] User Manual

Havells 16A Wi-Fi Enabled Smart Socket, 16A Wi-Fi Enabled Smart Socket, Wi-Fi Enabled Smart Socket, Enabled Smart Socket, Smart Socket, Socket

**[Manuals+](#)**,