



CPVAN P06 PIR Motion Sensor User Manual

[Home](#) » [CPVan](#) » CPVAN P06 PIR Motion Sensor User Manual 

CPVAN P06 PIR Motion Sensor User Manual

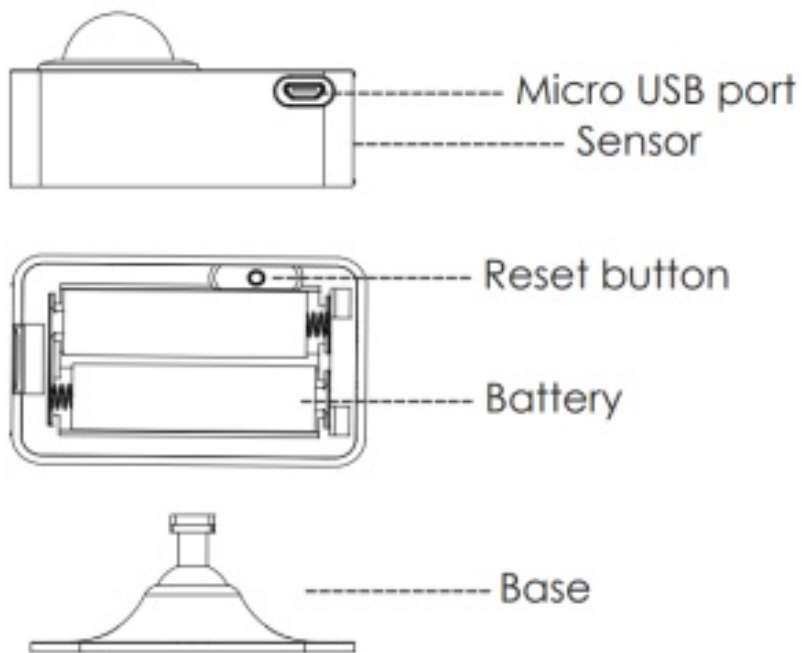


Thanks for choosing our PIR motion sensor, which detects the movement of people or animals, keep you alert and safe. Please read the manual carefully before use and keep it for further reference.

Contents

- [1 Product Presentation](#)
- [2 How to use](#)
- [3 How to set up](#)
- [4 Features](#)
- [5 Specification](#)
- [6 Documents / Resources](#)
- [7 Related Posts](#)

Product Presentation



How to use

Slide to open the back cover of battery compartment, take out the insulation sheet, or connect Micro usb port with Micro charging cable to USB power supply.

Checklist before using the device:

- **a.** Your smartphone has connected to a 2.4GHz wifi network.
- **b.** You have input the correct wifi password.
- **c.** Your smartphone must be Android 4.4 + or iOS 8.0 +.
- **d.** Your wifi router is MAC-open.
- **e.** If the numbers of devices connected to the router reach the limit, you can try to disable a device to cavate the channel or try with another wifi router.

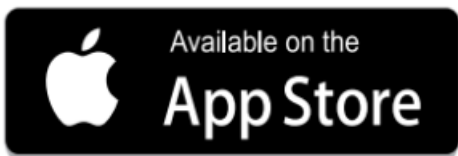
How to set up

1. Use your smartphone to scan QR code, or search“Smart Life” app in Google play or APP Store to download and install.

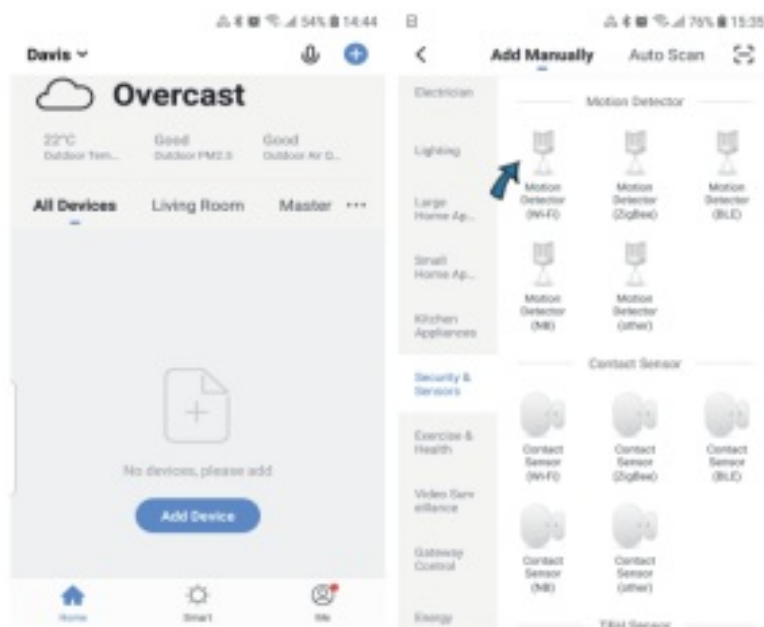




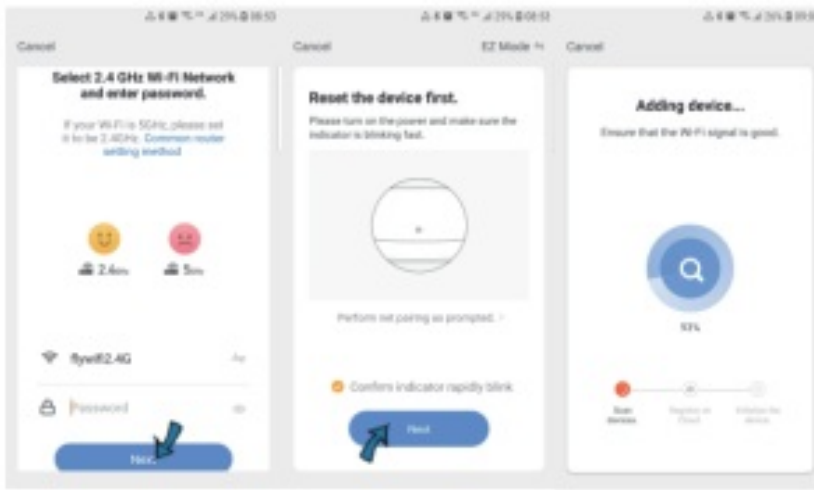
Smart Life



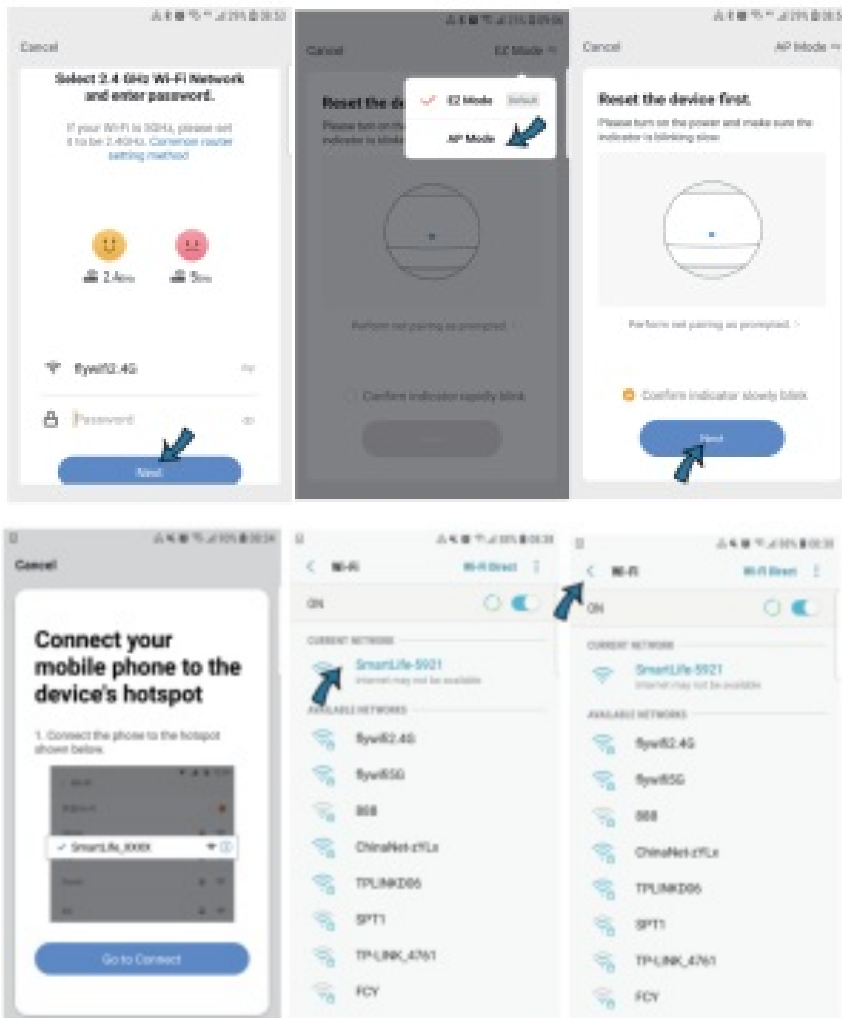
2. Create an account with your mobile number and authentication code.
3. Connect your mobile to your wifi router , click “+” at the upper right corner of homepage or click “Add Device” , then select “ Motion Detector (Wi-Fi)”under“Motion Detector” type from “Security & Sensors”



4. If your wifi router only open 2.4GHz, enter the wifi password, if the LED indicator is not blinking rapidly, hold the reset button for about 5 seconds till indicator blink quickly, it will connect to wifi router automatically.



If your wifi router open both 2.4GHz and 5GHz with same name, please choose“AP Mode”, enter the wifi password, hold the reset button for about 5 seconds till indicator blink slowly, connect your mobile to the device’s hotspot: “SmartLife-XXXX”, click to return to App interface ,it will connect to wifi router automatically, the configuration complete. Push the back cover to close the battery compartment.



5. You can mount the sensor with adhesive tape or secure with screws on the wall.

Features

1. Remote Monitor

Provides 24-hour monitoring, you can check the status via app remotely.

2. Alarm Alert

Whenever the sensor detects someone or animal is passing by, it will send alarm to keep you alert.

3. Push Notification

Instant notification pushed to your phone immediately when movement is detected, keep you informed all the time.

4. Alarm Recording

Check all alarm records in the app. you never miss any important moments.

5. Device Sharing

You can share your added sensors to your family or friend, so they can also monitor the status .

Specification

- Size: 70*45*35.6mm
- Battery: LR6-1.5V/AA*2 (Alkaline battery)
- Micro Input: DC 5V/1A
- Standby Current: $\leq 51\mu\text{A}$
- Detect Angle: 128°
- Detect Distance: $\leq 10\text{ m}$
- WiFi Type: 2.4GHz
- WiFi Standard: IEEE 802.11 b/g/n
- Working Temperature: 0
- Working Humidity: 10%~85% RH
- Includes Micro charging cable, adhesive tape and screws
- Support Android 4.4 + or iOS 8.0 + version

Documents / Resources



[CPVAN P06 PIR Motion Sensor](#) [pdf] User Manual
P06, PIR Motion Sensor