



CPTEA Wireless Door Chime User Manual

[Home](#) » [Support](#) » CPTEA Wireless Door Chime User Manual 

Contents

- [1 CPTEA Wireless Door Chime](#)
- [2 CHANGE THE RINGTONE](#)
- [3 PAIRING CLEAR SETTINGS & ADJUST VOLUME](#)
- [4 RECEIVER DIAGRAM](#)
- [5 TRANSMITTER DIAGRAM](#)
- [6 FEATURES & SPECIFICATIONS](#)
 - [6.1 Product Features](#)
 - [6.2 Specifications](#)
- [7 TROUBLESHOOTING](#)
- [8 CHIMES LIST](#)
- [9 WARRANTY](#)
- [10 Related Posts](#)



CPTEA Wireless Door Chime



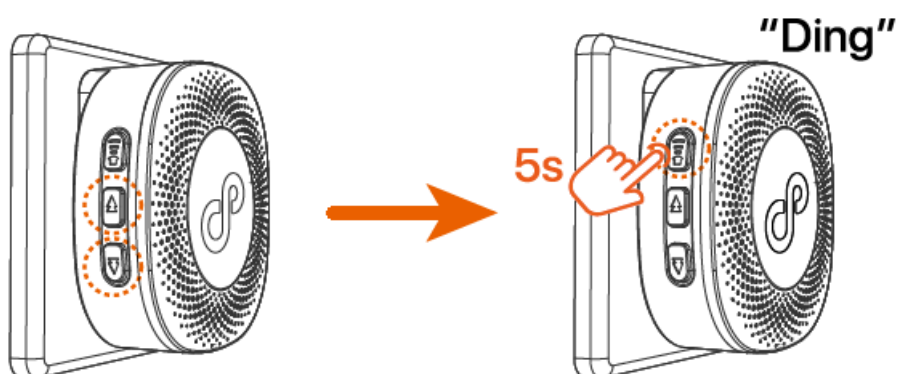
CHANGE THE RINGTONE

- **Step 1**

Plug the receiver into a socket and choose your favorite melody.

- **Step2**

Press and hold down the (Volume) button on the receiver for 5s, until it makes a “Ding” sound and the receiver indicator flashes.

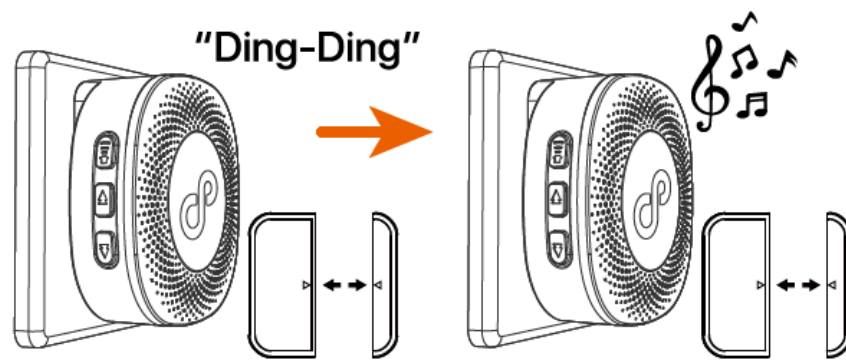


- **Step 3**

let the gap between the sensor part and the magnet beyond 0.4 inches (1 cm), the receiver makes a “**Ding-Ding**” sound, and the indicator flashes

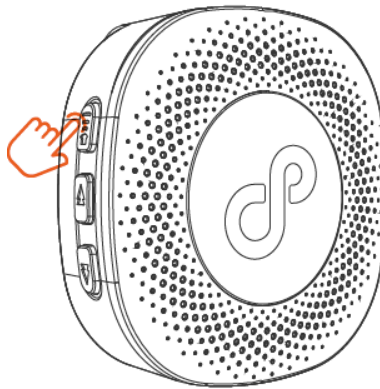
- **Step 4**

Repeat the above operation to test, the receiver rings, and the pairing is successful



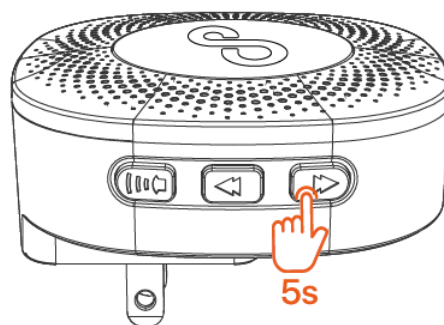
PAIRING CLEAR SETTINGS & ADJUST VOLUME


Adjust the Volume



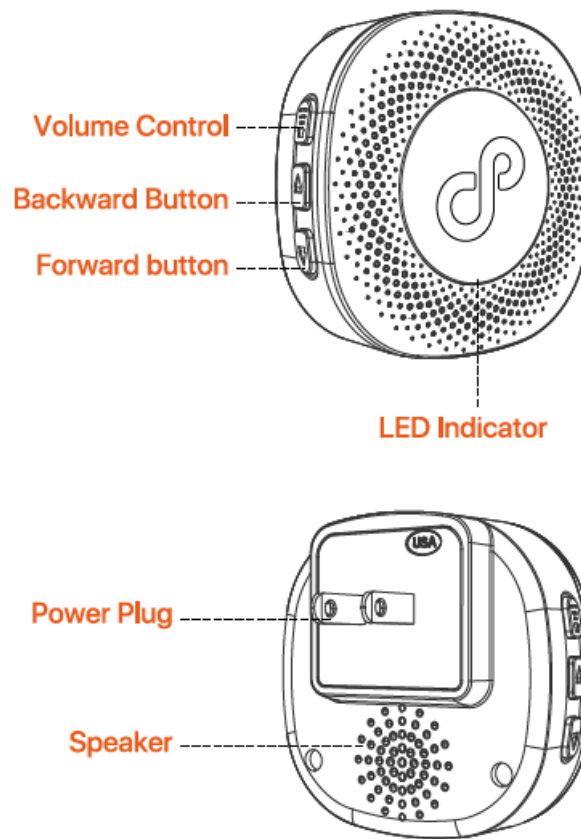
- Press the volume button on the receiver to increase the volume.
- 5-level volume from 0 dB to 120 dB. If the maximum volume has been set, the next level will switch to the minimum volume, the Silent Mode.

Clearing the Settings



Press and hold down the Forward Button  on the receiver for about 5s until it makes a **“Ding”** sound with LED light flashing, all the settings will be cleared.

RECEIVER DIAGRAM

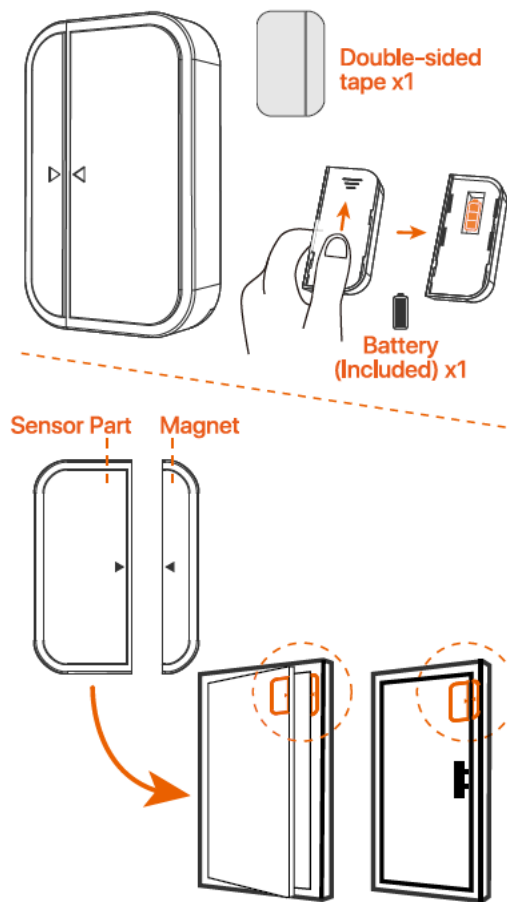


Warm tip:

- Plugged in the power, the receiver will ring, while the light will flash.
- The receiver is better than 2 Ft from the ground, too close to the ground will affect the signal strength.

TRANSMITTER DIAGRAM

Wireless Door Chimes



When the gap between the sensor part and the magnetic pole is greater than 0.4 inch (1cm), the sensor sends a signal to the receiver.

FEATURES & SPECIFICATIONS

Product Features

- Learning Code
- 55 Ringtones
- Memory Function
- Transmitter Waterproof Grade IP55
- Level 5 Volume Adjustable, 0-120 dB
- Wireless Range 500 Ft

Specifications

Specifications are subject to change without notice.

- **Sensor Battery:** 23A(Incl.)
- **Power Supply:** DC12V
- **Transmitting Power:** 15dB
- **Receiver Working Voltage:** AC 100-260V
- **Frequency:** 433MHz
- **Working Temperature:** -22°F to 158°F
- **Product Material:** ABS

TROUBLESHOOTING

Q1: Why the AC receiver does not work?

A 1: If the AC receiver does not work, the following are possible causes:

- The battery in the transmitter may be run down, please replace the battery.
- The battery may be inserted the wrong way round, polarity reversed. Please insert the battery correctly, but be aware the reverse polarity may damage the unit.
- Ensure that the AC receiver is switched on at the mains.
- Check that neither the transmitter nor the receiver are near to possible sources of electrical interference, such as a power adapter, or other wireless devices.
- The range will be reduced by obstacles such as walls, although this will have been checked during setup.
- Check that nothing, particularly a metal object, has been placed between the transmitter and the receiver. You may need to reposition the AC receiver.

Q2: After receiving the package, do I need to pair the transmitter and receiver myself?

A2: This product has been coded at the factory and can be used directly without re-coding. Only after adding or replacing the transmitter, the code-matching operation will be performed.

Q3: Will it continue to chime as long as the door is open?

A3: The duration of the bell ring is that depending on the length of the bell, the bell will only ring once at a time. If you want the ringtone to be shorter, you can choose the Ding-Dong tone. If you want a long ringtone, you can choose music that lasts longer.

Q4: When changing the battery, won't the adhesive wear down over time by removing and putting it back into place?

A4: Depending on the direction of your installation, you only need to smooth the sensor up or down without removing the back cover with adhesive wear.

Q5: What happens when I clear the settings?

A5: All settings will be cleared, which means the ringer you have set and the product you have paired will be cleared. When you press the transmitter button again, only the first transmitter will be automatically paired with the receiver, the other transmitters will need to be paired again.

Q6: In case there is no power, will the receiver work with batteries?

A6: No, the receiver does not run on batteries.

Q7: Can a receiver play different chimes based on which transmitter is activated?

A7: Yes, you can. When pairing a receiver, you only need to choose different ringtones for different transmitters. The music corresponding to each transmitter is determined in the learning mode. Normally changing the music track does not change the music corresponding to that transmitter.

Q8: Can multiple devices be used in the same house without interference? If I buy an additional kit, will all the devices work together in unison or independently?

A8: Multiple transmitters can be paired with the same receiver with different ringtones. Likewise, one transmitter button can be paired with different receivers. If you add or replace a transmitter from the same manufacturer, you only need to repeat the pairing operation.

Q9: Any warning the transmitter's battery is getting low?

A9: There is no warning as to when new batteries are needed. If you press it and the receiver doesn't ring, the transmitter's batteries need replacing. It uses a 23A 12V battery. The expected battery life is about seven months

if the transmitter is used more than 20 times per day.

Q10: Is it waterproof, can it be used outside?

A10: The Sensor's waterproof grade is IP55, but we recommend that this sensor should not be used outdoors because there is a battery installed, sometimes it is slightly thrown into the water and does not affect the work, but should not stay in the water for too long.

CHIMES LIST

1 Dingdong+Dingdong	29 Wilson March
2 Telephone Ringtone	30 Russe Dance1
3 Dingdingdong	31 The Golden Jubilee
4 Dingdong*2	32 Victory March
5 Dingdong	33 Vocal 135i
6 Westminster Chimes	34 Luciano Pavarotti
7 Dingdong+Dingdong	35 Happy Birthday
8 Vocal 135i	36 Four Whistling Swans
9 Vocal i531	37 Vocal i531
10 Bird	38 The Little Mermaid
11 Dog	39 Seine River
12 The Cuckoo Waltzes	40 Scarborough fair
13 Spanish Lady	41 McDull dance
14 Haydn	42 Romance De Amour
15 Dingdong+Dingdong	43 For Alice
16 Richard Clayderman	44 Dingdong+dingdong
17 NOCK	45 Anita lane
18 Cuckoo	46 Susanna
19 Greensleeves	47 Ballade Pour Adeline
20 Radetzky March	48 Red River Valley
21 Turkischer Marsch	49 Love is Blue
22 Toreador SongA	50 Paganini
23 Toreador SongB	51 Jingle Bells
24 Merry Christmas	52 Happy Sunday
25 Nokia Tune	53 Memory
26 Classic Sound Effects	54 Italian Polka
27 Ringtones	55 Moscow Nights
28 Yesenia	

WARRANTY

If there is any issue with the product. Please feel free to contact us by email at support@cptea.net, and you may also reach out to us via Amazon Message. We'll try our best to give you a satisfactory answer.

Customer Service Team: support@cptea.net Website: www.cptea.net

Scan the QR
code to activate
the warranty. ►



<http://www.cptea.net>

Download this PDF Link: [CPTEA Wireless Door Open Chime User Manual](#)

Manuals+