



CPS Office Computer Chair Instruction Manual

[Home](#) » [CPS](#) » CPS Office Computer Chair Instruction Manual

CPS Office Computer Chair Instruction Manual

CPS ASSEMBLY INSTRUCTION

Contents

- Instructions
- User Manual
- Cautions



✉ support@neochair.com

🌐 www.neochair.com

support@neochair.com
www.neochair.com

Please make sure all the parts are included.
Missing parts? support@neochair.com



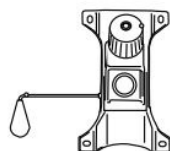
BACK X1



SEAT X1



ARMREST X2



CONTROL
MECHANISM X1



WHEEL X5



BASE X1



GAS LIFT
CYLINDER X1



ALLEN KEY X1



A X4
(SEAT)



B X4
(BACK)



C X4
(CONTROL)

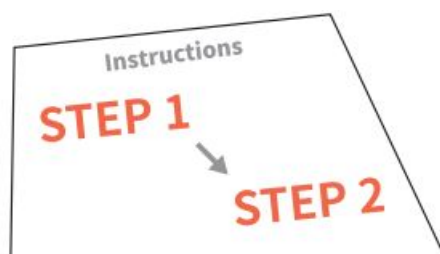


D X4
(WASHER)

Read the instructions carefully.



Please follow the assembly steps.



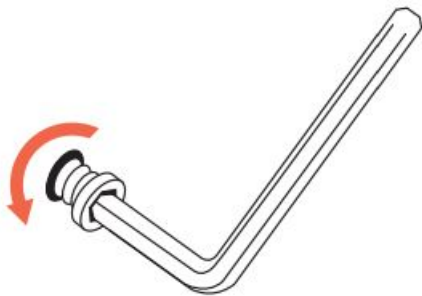
Contents [[hide](#)

- [1 Instructions](#)
- [2 User Manual](#)
- [3 Cautions](#)
- [4 Documents / Resources](#)
 - [4.1 References](#)
- [5 Related Posts](#)

Instructions

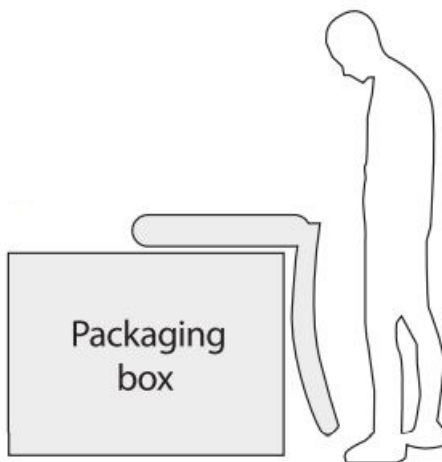
NOTICE

Please use the Allen key included instead of an electric drill.



TIPS!

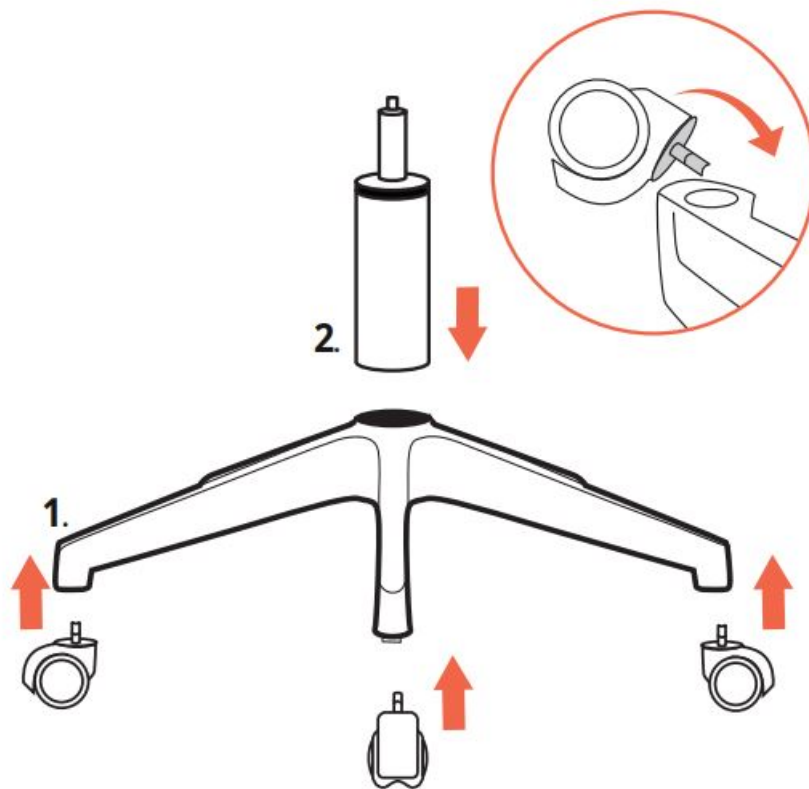
Use the box for an easier assembly.



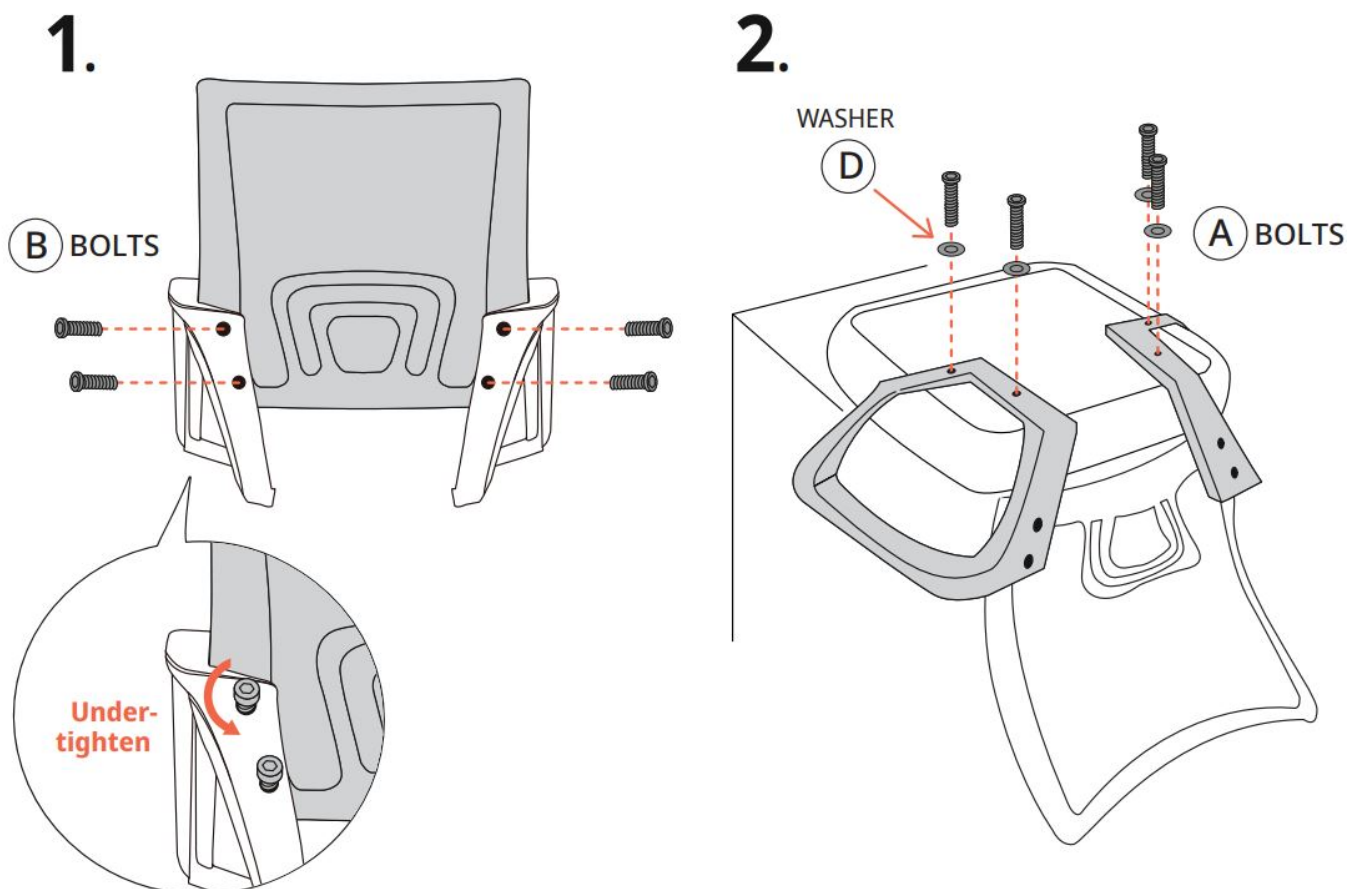
STEP 1 Bottom



Use the base as support and press firmly from above with the wheel.
Make sure to put the wheels in the base before the gas lift cylinder.

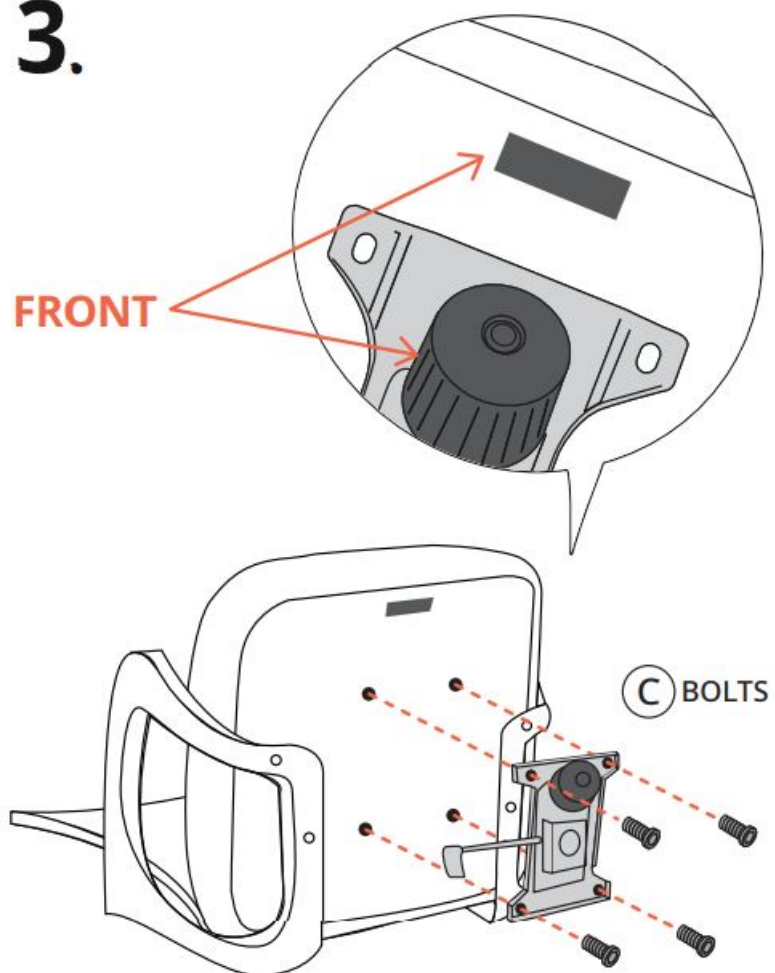


STEP 2 Top

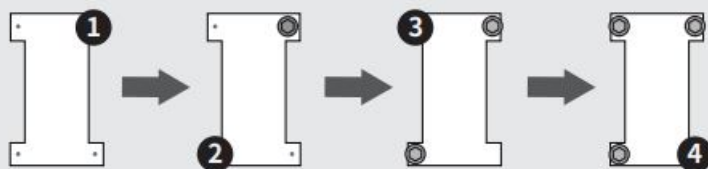


If there are any problems, do not hesitate to e-mail us. support@neochair.com

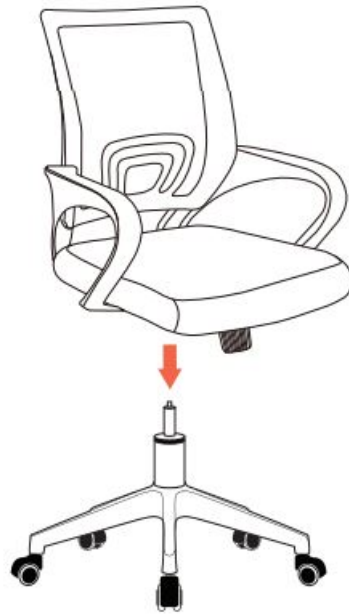
3.



Order of bolts for better durability.



4.

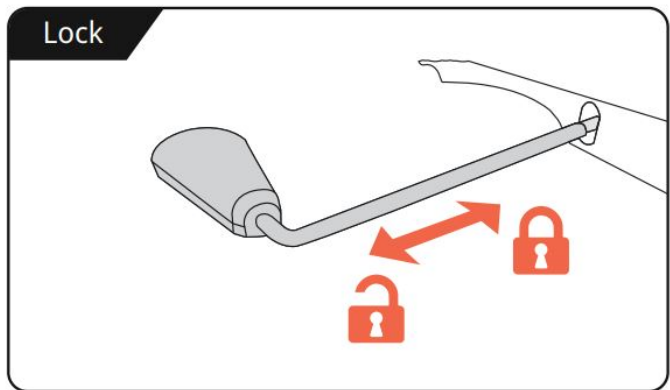
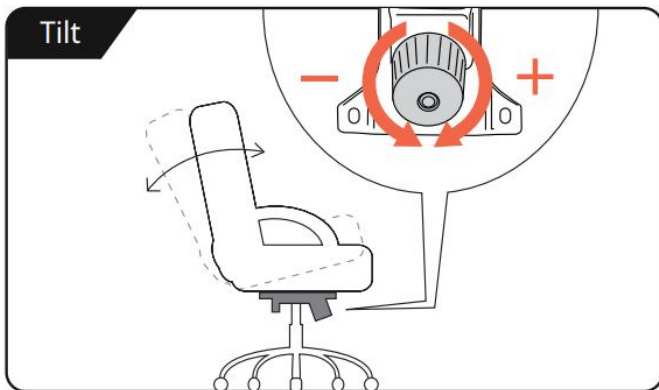
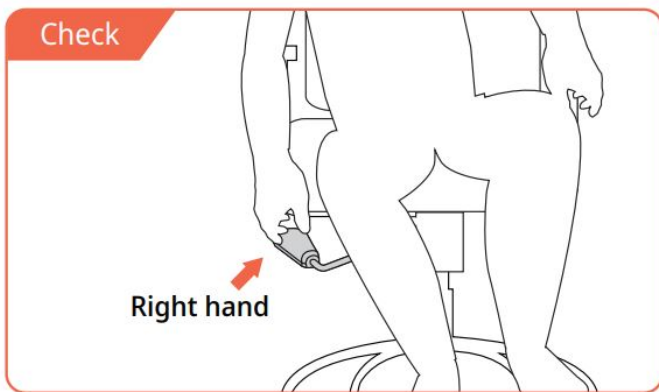


Done

5.



User Manual



To deodorize your new chair

leave the chair in a shady outside for 1-2 days.



For longer use

Re-tighten bolts every 6 months by using the enclosed Allen-key.

*Using an electric drill can damage the chair. Please re-tighten bolts manually.



Cautions



Use this product only for seating **one person** at a time



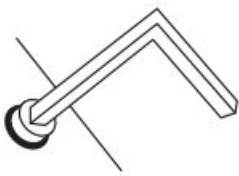
DO NOT use the chair unless all bolts, screws and knobs are tight



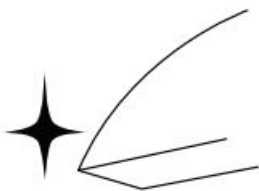
DO NOT use the chair if only components are missing or damaged



DO NOT stand on the chair use as a step stool or ladder



Regularly check all bolts, screws, and **knobs are tight**



Be careful, some of the part are **heavy** and has **sharped edge**



Failure to follow these warnings may cause **serious injury**

If there are any problems, do not hesitate to e-mail us. support@neochair.com

Enjoy your new favorite chair

Our goal is to create a perfect customer experience. Let us know if you have any feedback. Your comment motivates us to become a better team.



support@neochair.com



www.neochair.com



[@NEOCHAIR](https://www.facebook.com/NEOCHAIR)



[neochair_office](https://www.instagram.com/neochair_office)

Documents / Resources



[CPS Office Computer Chair](#) [pdf] Instruction Manual
Office Computer Chair

References

- [Neo Chair | Marvel gaming chairs & home office chairs](#)