



CPJROBOT T1 LiDAR Waterproof LiDAR Sensor User Guide

[Home](#) » [CPJROBOT](#) » CPJROBOT T1 LiDAR Waterproof LiDAR Sensor User Guide 

Contents

- [1 CPJROBOT T1 LiDAR Waterproof LiDAR Sensor User Guide](#)
- [2 Introduction](#)
- [3 Prerequisites](#)
- [4 Step 1: Connect the LiDAR Device](#)
- [5 Step 2: Install the Software](#)
- [6 Step 3: Launch the Software](#)
- [7 Using the Software](#)
- [8 Support](#)
- [9 Documents / Resources](#)
 - [9.1 References](#)
- [10 Related Posts](#)

CPJROBOT T1 LiDAR Waterproof LiDAR Sensor User Guide



Introduction

Welcome to our LiDAR product user guide. This guide will walk you through the steps necessary to connect your LiDAR device and install our software for seamless operation.

Prerequisites

Before you begin, ensure that you have:

- A T1 LiDAR device
- A computer running windows 10 or 11
- An Ethernet cable with or without a switch

Step 1: Connect the LiDAR Device

1. Connect power cable for your T1 LiDAR device.
2. Connect one end of the cable to the LiDAR device.
3. Connect the other end of the cable to an available RJ45 port on your computer.

Step 2: Install the Software

1. Download bourbon sdk if not pre-installed in your computer from
<https://download.poelidar.com/bonjournsdksdksetup.exe>



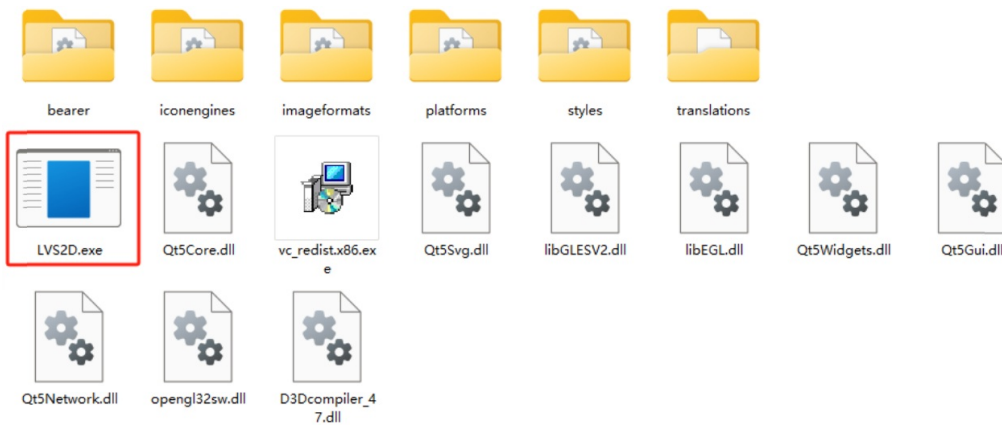
bonjournsdksu p.exe

2. Download T1 Viewer from https://download.poelidar.com/T1_viewer.zip



T1_viewer.zip

3. Once the download is complete, unpack it and find LVS2D.exe



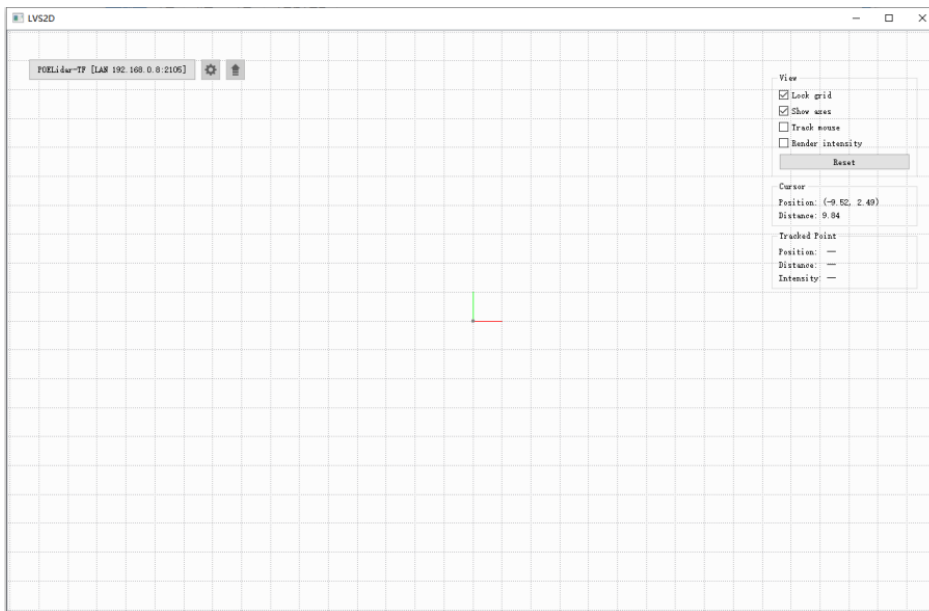
Step 3: Launch the Software

1. Double click LVS2D.exe to launch the T1 Viewer.
2. Upon launching, the software will automatically detect and connect to your LiDAR device.

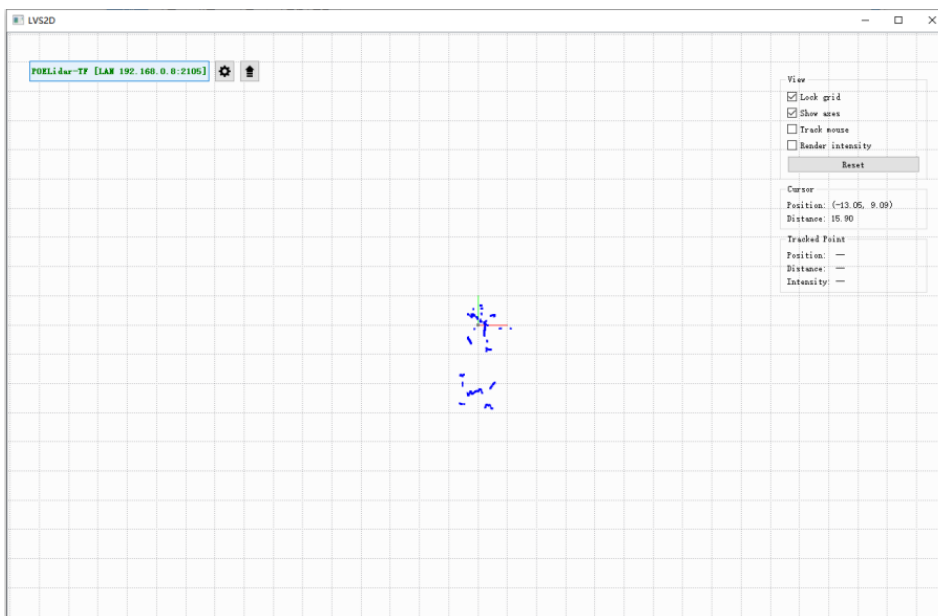
If the software does not detect your LiDAR device, ensure that it is properly connected and powered on, then try reconnecting it.

Using the Software

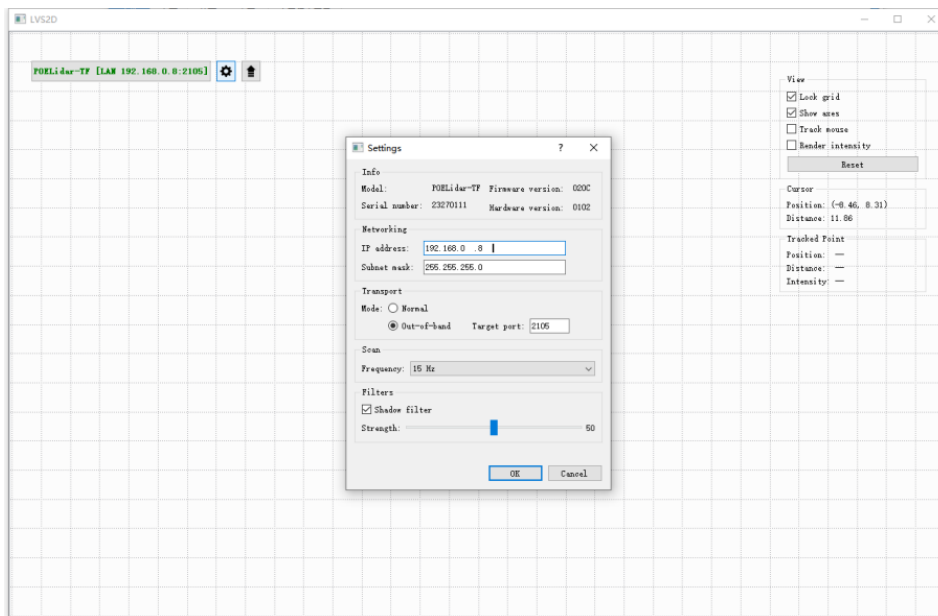
1. When T1 LiDAR detected, you will see the LiDAR name on top left corner



2. Check the LiDAR IP shown on the top left corner, 192.168.0.8 in this picture.
3. Modify your computer's LAN IP to the same range, for example, you can set it 192.168.0.10 (pls do not use DHCP Mode)
4. After IP set within the same range, click on the LiDAR name (top left corner), then you will see it changed color to green.



5. You can see blue dots in the middle which are the objects T1 detects, her you can zoom in, zoom out or rotate to get a better view.
6. Click on the settings icon, and you will enter the following interface



7. From here you can set T1 LiDAR's IP address, subset mask or target port.
8. PLS KEEP TRANSPORT MODE with Out-of-band ONLY!!!
9. You can click Frequency and select one from the drop down list, T1 supports from 10Hz to 30Hz.
10. With shadow filter marked, you can select from 0 to 100, and dots amount will significantly be affected. (Filtered out or Not-Filtered)

Support

If you encounter any issues or have questions not addressed in this user guide, please contact our support team at info@cpjrobot.com.

Documents / Resources

	<p>CPJROBOT T1 LiDAR Waterproof LiDAR Sensor [pdf] User Guide T1, T1 LiDAR Waterproof LiDAR Sensor, T1, LiDAR Waterproof LiDAR Sensor, Waterproof LiDAR Sensor, LiDAR Sensor, Sensor</p>
--	--

References

- download.poelidar.com/bonjoursdksetup.exe
- [User Manual](#)

Manuals+ Privacy Policy

This website is an independent publication and is neither affiliated with nor endorsed by any of the trademark owners. The "Bluetooth®" word mark and logos are registered trademarks owned by Bluetooth SIG, Inc. The "Wi-Fi®" word mark and logos are registered trademarks owned by the Wi-Fi Alliance. Any use of these marks on this website does not imply any affiliation with or endorsement.