



COYOTE Dimensional Renderings CSSD36 Installation Guide

[Home](#) » [COYOTE](#) » COYOTE Dimensional Renderings CSSD36 Installation Guide 

COYOTE Dimensional Renderings CSSD36

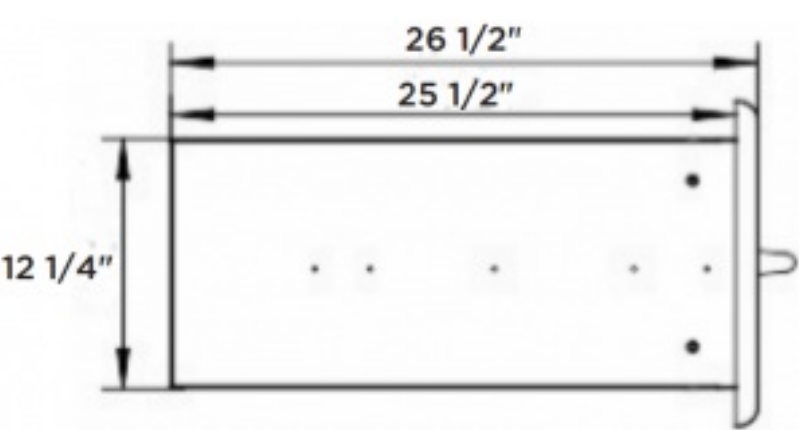
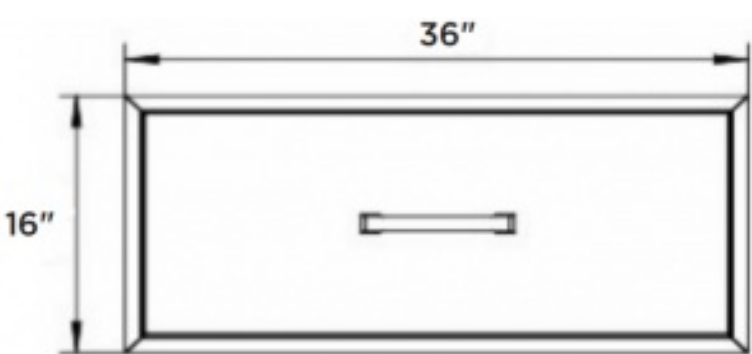
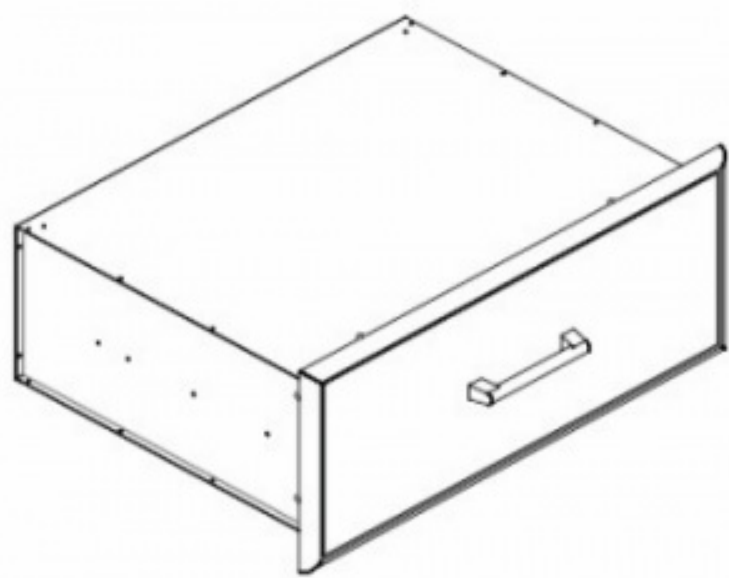


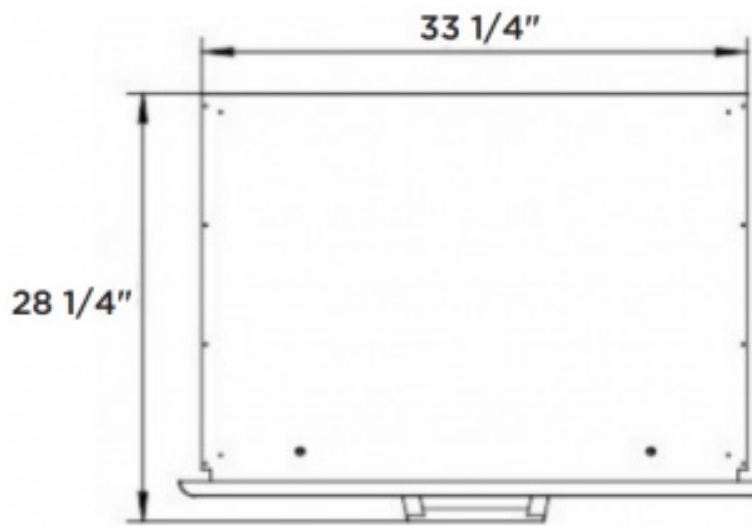
Contents

- [1 Overall Product Dimensions](#)
- [2 Cutout Dimensions for Island](#)
- [3 Documents / Resources](#)
 - [3.1 References](#)
- [4 Related Posts](#)

Overall Product Dimensions

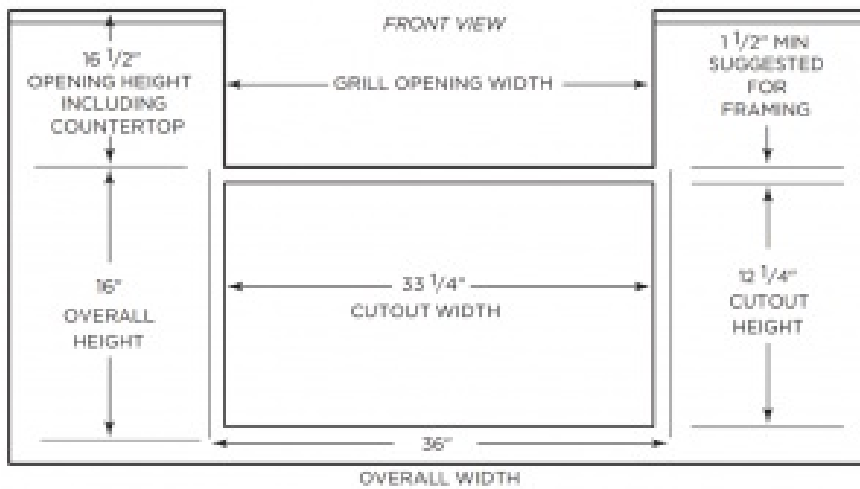
Model No.	Height	Width	Depth
CSSD36	16"	36"	26 1/2"

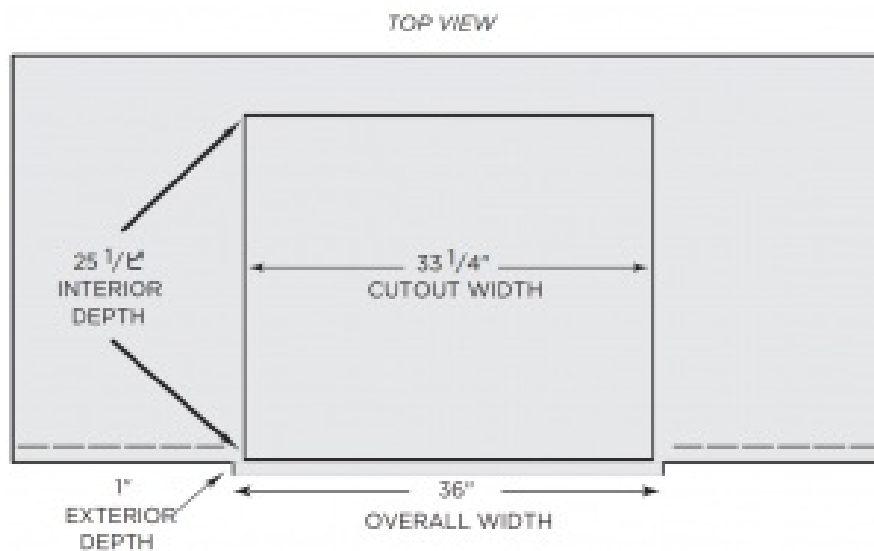




Cutout Dimensions for Island

Model No	Height	Width	Depth
CSSD36	12 1/4"	33 1/4"	25 1/2"





Install Notes

- The drawer has a gasket to keep moisture out and is capable of holding 120 lbs
- 2 anchor points are located on each side of the doors interior frame (top, bottom, left and right)
- Due to wide variance of possible building materials, anchors are not included
- When inserting your anchors be sure to use a framing square to ensure the door is not pulled out of square
- Additional framing and/or support underneath the rear (hanging portion) of the cabinet is recommended
- These specs are accurate but we always suggest having the product physically on site to ensure full understanding of how this product will coordinate with your build



www.coyoteoutdoor.com

Documents / Resources

	<p>COYOTE Dimensional Renderings CSSD36 [pdf] Installation Guide</p> <p>COYOTE, Dimensional Renderings, CSSD36</p>
--	--

References