



COX Digital Terminal Adapter Instructions

[Home](#) » [Cox](#) » COX Digital Terminal Adapter Instructions 



Instructions Digital Terminal Adapter

Contents

- [1 Getting started is easy.](#)
- [2 Documents / Resources](#)
- [3 Related Posts](#)

Getting started is easy.

Here's what's in your kit:



Coax cable



Power cord



HDMI cable



Cox Remote



Digital Terminal Adapter (DTA)

And here's what you'll need:

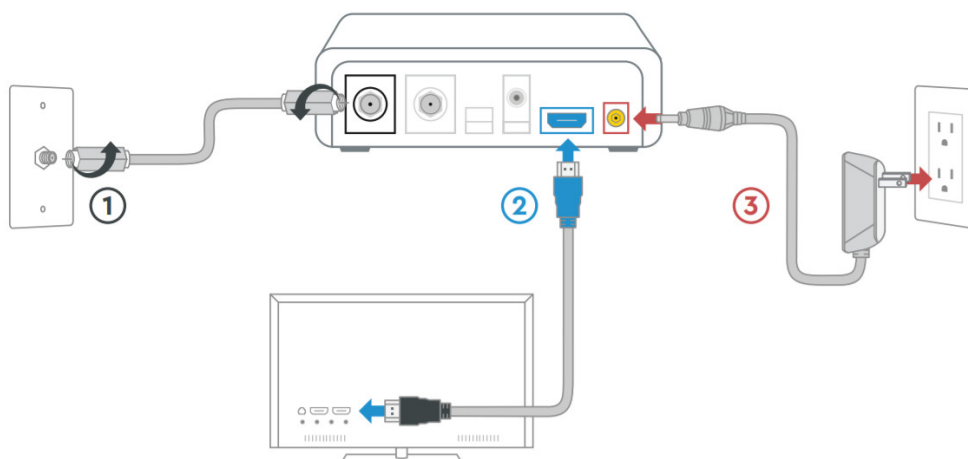


Your original TV remote



TV

Here's what to do:



1. Plugin the DTA

First, connect the **coax cable** 1 to an active cable outlet on the wall and to the cable port on the DTA.

Then connect the **HDMI cord** 2 to your TV and to the DTA.

Lastly, connect the **power cord** 3 to an electrical outlet and the DTA.

TIP: Plug the coax cable into a centrally located cable outlet or use the same outlet where the old device was

connected.

2. Activate the DTA

Turn on your TV. Then using your **original TV remote**, press the **source or input button** and select the correct **HDMI connection**. Then wait for a few minutes for the activation to finish.

3. Pair your Cox remote

Follow the steps on the back of **the Cox remote to pair it to your TV**.

We're here to help.

FAQs

Why isn't my DTA working?

Try rebooting— just unplug the power cord from the wall, wait 10 seconds, then plug it back in. It may take a few minutes to reset. Also, make sure all of the connections are tight and completely plugged in.

How do I fix a “No Input” message on my TV?

Press the “input” or “source” button on your original TV remote until you select the HDMI connection that matches the port your HDMI cable is plugged into on your TV.

Where can I view my channel lineup?

Go to Coxbusiness.com → Small Business → TV → TV Channel LineupBookmark this page or print it for easy reference.






Why isn't my remote working?

Try pairing it again by following the steps listed on the back of the remote. For more support and troubleshooting, go online to

Cox.com/business/support/remote-control-user-guides.html.

How can I fix the message “Temporarily Off Air” on my TV?

Check for loose connections and finger-tighten all of the cables coming from the wall, DTA, splitter, TV, and other devices.

	TEXT: message an agent at 36009
	WEB: Coxbusiness.com/selfinstall
	CHAT: live chat on Coxbusiness.com/chat
	CALL: 1-844-208-3743
	ACCESSIBILITY: Cox.com/accessibility



Help us send zero waste to landfill by recycling the kit once you're finished. It's made with 100% recyclable materials.

520-1973



Documents / Resources



[COX Digital Terminal Adapter](#) [pdf] Instructions
COX, Digital, Terminal, Adapter