



## COX 2M GTG21 LoRa Tracker with GPS Gen 2.1 User Manual

[Home](#) » [COX 2M](#) » COX 2M GTG21 LoRa Tracker with GPS Gen 2.1 User Manual 



### GTG21 LoRa Tracker with GPS Gen 2.1 User's Manual

#### **Federal Communication Commission Statement (FCC, U.S.)**

This equipment has been tested and found to comply with the limits for a Class B digital device, pursuant to Part 15 of the FCC Rules. These limits are designed to provide reasonable protection against harmful interference in a residential installation. This equipment generates, uses, and can radiate radio frequency energy and, if not installed and used in accordance with the instructions, may cause harmful interference to radio communications. However, there is no guarantee that interference will not occur in an installation. If this equipment does cause harmful interference to radio or television reception, which can be determined by turning the equipment off and on, the user is encouraged to try to correct the interference by one of the following measures:

- Reorient or relocate the receiving antenna.
- Increase the separation between the equipment and receiver.
- Connect the equipment into an outlet on a circuit different from that to which the receiver is connected.
- Consult the dealer or an experienced radio/TV technician for help.

This device complies with Part 15 of the FCC Rules. Operation is subject to the following two conditions: (1) This device may not cause harmful interference, and (2) this device must accept any interference received, including interference that may cause undesired operation.

#### **Radiation Exposure Statement**

This device complies with RF radiation exposure limits set forth for an uncontrolled environment. This transmitter must not be co-located or operating in conjunction with any other antenna or transmitter.

This device must operate with a minimum distance of 20 cm between the radiator and the user body.

#### **FCC Caution:**

Any changes or modifications not expressly approved by the party responsible for compliance could void the user's authority to operate this equipment

#### **IC WARNING**

This device contains license-exempt transmitter(s)/receiver(s) that comply with Innovation, Science, and

Economic Development Canada's license-exempt RSS(s). Operation is subject to the following two conditions:

1. This device may not cause interference.
2. This device must accept any interference, including interference that may cause undesired operation of the device

**Radiation Exposure Statement:**

This equipment complies with Canada's radiation exposure limits set forth for an uncontrolled environment. This equipment should be installed and operated with a minimum distance of 20cm between the radiator & your body.

**Revision History**

Revision	Date	Description
1.0	January 28th, 2022	1st Release

**Contents**

- [1 Chapter 1 – Introduction](#)
- [2 Chapter 2 – Hardware Specification](#)
- [3 Chapter 3 – Operation](#)
- [4 Chapter 4 – Installation](#)
- [5 Documents / Resources](#)
- [6 Related Posts](#)

**Chapter 1 – Introduction**

**Purpose**

The multi-purpose Industrial Tracker GTG21 is designed for outdoor asset tracking and industrial purposes. Batteries are replaceable and the device is designed to operate for many years. The sensor includes a three-axis accelerometer which is used to optimize different asset-tracking applications for response time and battery lifetime. The sensor also includes many unique GPS acquisitions and geo-fencing features for optimal battery lifetime and response time. A new Bluetooth feature is added to aid GPS acquisition and a buzzer to alert users.

**Reference**

Document	Author
LoRaWAN Regional Parameters	LoRa Alliance
LoRaWAN Specification	LoRa Alliance

**Chapter 2 – Hardware Specification**



### General Specification

<b>LoRa radio</b>	Frequency 902 MHz – 928 MHz LoRaWAN 1.0.3.0
<b>GPS radio</b>	GPS and GLONASS
<b>Bluetooth radio</b>	Bluetooth 5
<b>LED</b>	Single Green indicator
<b>Temperature range</b>	-20 to 70 C
<b>Environmental rating</b>	IP67
<b>Dimensions</b>	100.5mm x 56mm x 31.5mm
<b>Sensor</b>	Accelerometer Magnetic Sensing
<b>Rugged Design</b>	-20 to 70 C Physically and thermally durable plastic outer shell
<b>Physical Security</b>	Mounting tabs to support multiple installation techniques
<b>Battery type</b>	2 * Lithium Rechargeable
<b>Certification</b>	FCC ID: 2AV5ZGTG21 IC ID: 26096-GTG21
<b>Additional Features</b>	Buzzer
<b>Note</b>	

### Chapter 3 – Operation

### Flight Mode

When industrial trackers leave the factory, they are put into flight mode, where the sensor is hibernating without functionality to prevent radioactivity and minimize battery usage. Devices are delivered in this mode. G-sensor will not be ready to receive commands though it has not been disabled.

When the device is commanded by a network, the device shall exit shipping mode and enter default mode. If the device fails to join the network after trying 32 times, the device will revert to flight mode. Another way to enter flight mode from normal mode is when the device has not received ADR ACK for at least 56 hours.

### Normal Mode

This mode is active when the device is in normal operating mode. When the device detects a magnetic tap, the green LED shall flash according to the remaining battery voltage. For example, 4 times within 800ms for full battery, or once if a low battery condition is detected. After the motion, the device will turn on GPS acquisition once it remains at rest for 45 seconds. 3 Position updates then will be sent to the network.

## Chapter 4 – Installation

### Usage

Sturdy design to endure the weather with an enclosure of IP67 rating and plastic withstanding temperatures ranging from -20°C ~ +70°C ambient.

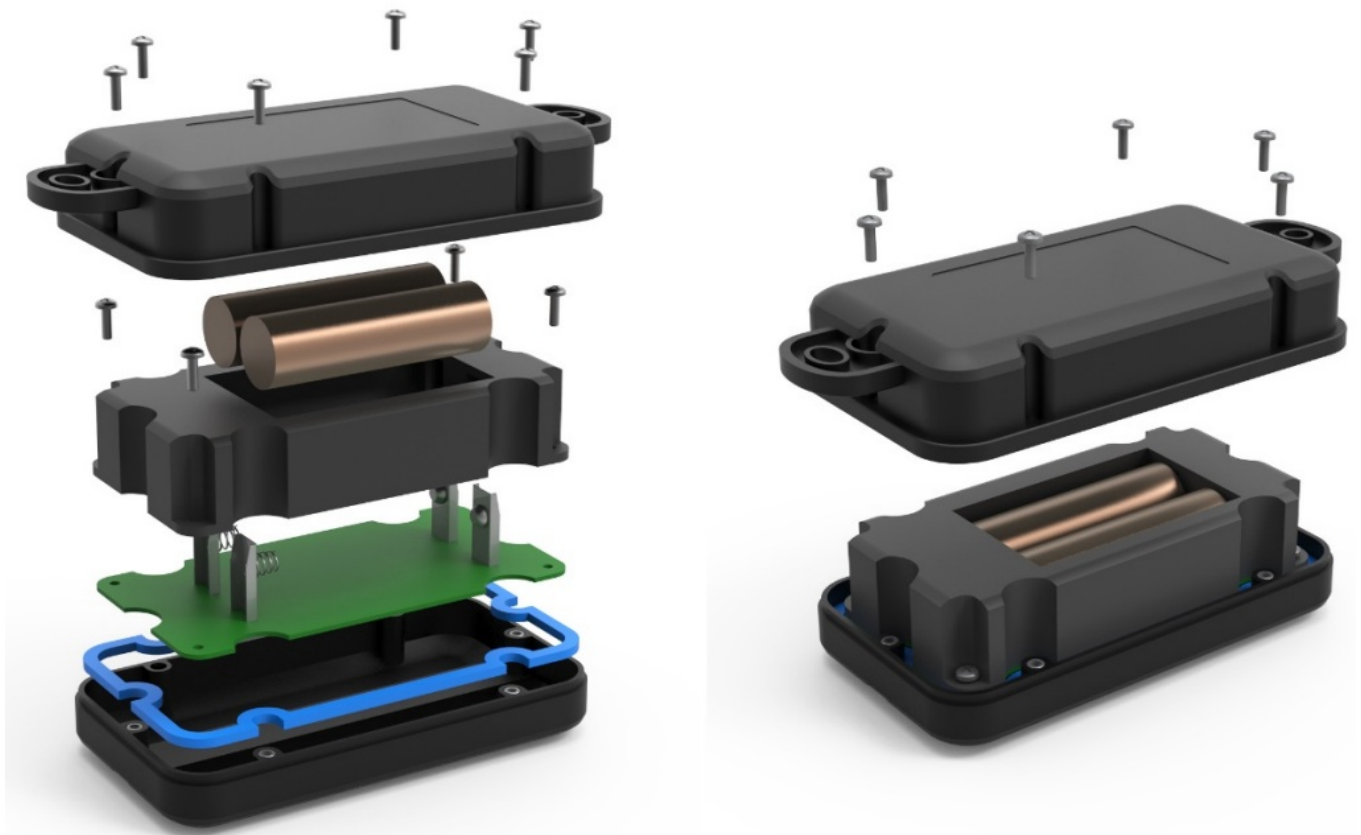
Two tabs on the side for numerous ways to secure, such as ties to the rear mirror and the steering wheel.

### Battery Replacement

Remove the bottom cover of the tracker.

Replace both batteries and use only ER14505

Do not mix used and fresh batteries.



**COX 2M<sup>SM</sup>**



[COX 2M GTG21 LoRa Tracker with GPS Gen 2.1](#) [pdf] User Manual  
GTG21, 2AV5ZGTG21, GTG21, LoRa Tracker with GPS Gen 2.1, GTG21 LoRa Tracker with GP  
S Gen 2.1, LoRa Tracker

Manuals+.