

COWSAR Z580032 Portable Nugget Ice Maker



COWSAR Z580032 Portable Nugget Ice Maker User Manual

[Home](#) » [COWSAR](#) » COWSAR Z580032 Portable Nugget Ice Maker User Manual 

Contents

- 1 COWSAR Z580032 Portable Nugget Ice Maker
- 2 Product Information
- 3 Product Usage Instructions
- 4 IMPORTANT SAFETY INSTRUCTIONS
- 5 PREPARING YOUR ICE MAKER FOR USE
- 6 GETTING TO KNOW YOUR UNIT
- 7 OPERATING PROCEDURES & MAINTENANCE
- 8 ASSEMBLE HANDLE
- 9 USING YOUR ICE MAKER
- 10 TROUBLESHOOTING
- 11 TECHNICAL PARAMETERS
- 12 Documents / Resources
 - 12.1 References

COWSAR

COWSAR Z580032 Portable Nugget Ice Maker



Product Information

Specifications

- **Product Name:** Portable Nugget Ice Maker
- **Model:** HZB-15NA
- **Power Source:** Electric
- **Capacity:** Varies based on model
- **Color:** Varies based on model

Product Usage Instructions

Important Safety Instructions

- Before using the ice maker, carefully read and follow all safety instructions provided in the user manual.

Preparing Your Ice Maker for Use

- Ensure the ice maker is placed on a flat, stable surface to avoid hazards. Do not operate the appliance with a damaged cord.

Important Safety Tips

1. Follow basic safety precautions to reduce the risk of fire, electric shock, and injury.
2. Do not puncture refrigerant tubing to avoid the risk of fire or explosion.
3. Install the ice maker according to safety standards for Refrigeration Systems.

4. If maintenance is required, ensure it is done by authorized service personnel using the correct components.

Getting to Know Your Unit

The ice maker features a control panel with ice-making and cleaning buttons, indicator lights for water level, and ice fullness, and a removable top cover for easy access.

Key Components

1. Float switch
2. Secondary water reservoir
3. Water reservoir
4. Filter
5. Control Panel
6. Ice basket
7. Water drain cap
8. Ice scoop
9. Handle

Frequently Asked Questions (FAQ)

Q: Can I use any type of water in the ice maker?

- **A:** It is recommended to use clean and filtered water to ensure the quality of the ice produced.

Q: How often should I clean the ice maker?

- **A:** Regular cleaning is essential to maintain the efficiency of the ice maker. Clean the unit according to the instructions provided in the user manual.

Q: What should I do if the ice maker stops working?

- **A:** Check the power source and ensure proper water levels. If the issue persists, contact customer service for assistance.
- Thank you for purchasing this product! Please read the instructions carefully before using your portable ice maker.
- If you have any questions about the product, please contact us via Amazon Message or customer service number: 213-4467172 or 661-4358826.

IMPORTANT SAFETY INSTRUCTIONS

- Your safety and the safety of others are very important.
- We have provided many important safety messages manual and your appliance.
- Always read and obey all safety messages.

This is the safety alert symbol:

- All safety messages will follow the safety alert symbol and the word “DANGER” or “WARNING”.

These words mean:

- You can be seriously injured if you don't immediately follow instructions.
- All safety messages will tell you what the potential hazard is, tell you how to reduce the chance of injury and tell you what can happen if the instructions are not followed.

PREPARING YOUR ICE MAKER FOR USE

IMPORTANT SAFETY TIPS

- When using electrical appliances, basic safety precautions should be followed to reduce the risk of fire, electric shock, and injury to persons or property. Read all instructions before using any appliance.
- Do not operate this, or any other appliance with a damaged cord.
- If the supply cord is damaged, it must be replaced by the manufacturer its service agent, or a similarly qualified person to avoid a hazard.
- This ice-maker must be positioned so that the plug is accessible.
- Connect to properly grounded outlets only. No other appliance should be plugged into the same outlet. Be sure that the plug is fully inserted into the receptacle.
- Do not run the power cord over carpeting or other heat insulators. Do not cover the cord. Keep the cord away from traffic areas, and do not submerge it in water.
- We do not recommend the use of an extension cord, as it may overheat and become a risk of fire. If you must use an extension cord, use No.14AWG minimum size and rated no less than 1875 watts.
- Unplug the ice maker before cleaning or making any repairs or servicing.
- Exercise caution and use reasonable supervision when the appliance is used near children.
- Do not use your ice maker outdoors. Place the ice-maker away from direct sunlight and make sure that there is at least 6 inches of space between the back of your unit and wall. Keep a minimum distance of 6 inches on each side of your unit free.
- Do not use other liquids to make the ice cube other than water.
- Do not clean your ice maker with flammable fluids. The fumes can create a fire hazard or explosion.
- Do not tip over.
- If the ice maker is brought in from outside in wintertime, give it a few hours to warm up to room temperature before plugging it in.
- **WARNING:** This appliance must be earthed.
- **DANGER** – Risk Of Fire or Explosion. Flammable Refrigerant Used. Do Not Use Mechanical Devices To Defrost the Ice Maker. Do Not Puncture Refrigerant Tubing.
- **DANGER** – Risk Of Fire Or Explosion. Flammable Refrigerant Used. To Be Repaired Only By Trained Service Personnel. Do Not Puncture Refrigerant Tubing.
- **CAUTION** – Risk Of Fire Or Explosion. Flammable Refrigerant Used. Consult the Repair Manual/Owner's Guide Before Attempting To Install or Service This Product. All Safety Precautions Must be Followed.
- **CAUTION** – Risk Of Fire Or Explosion. Dispose Of Property Under Federal Or Local Regulations. Flammable

Refrigerant Used.

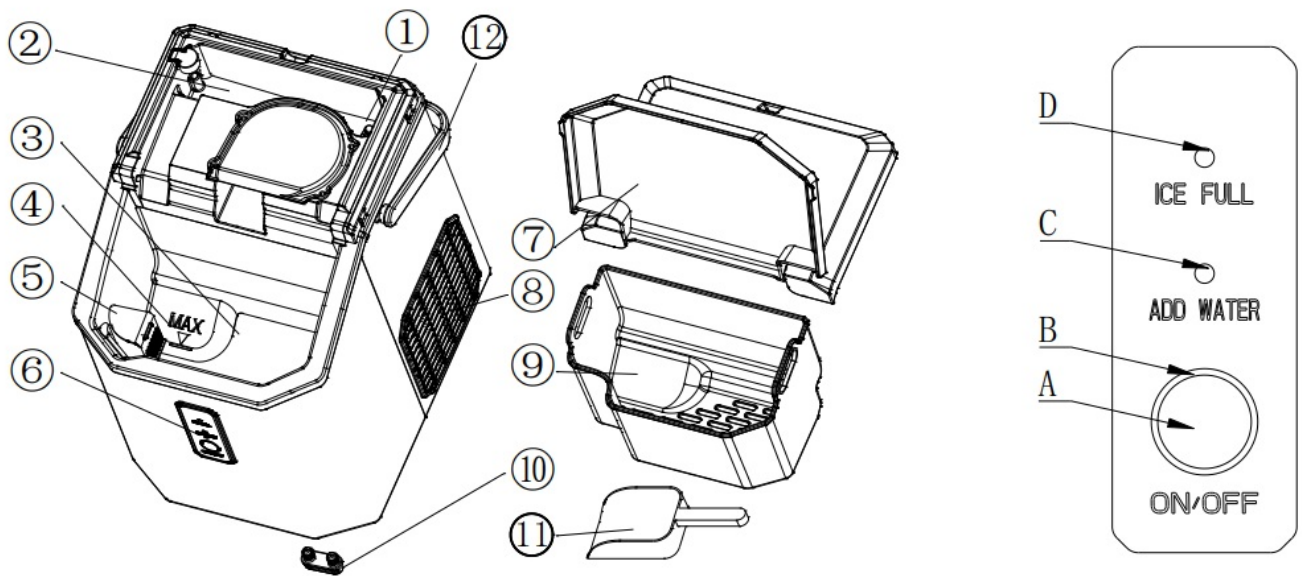
- **CAUTION** Of Fire Or Explosion Due To Puncture Of Refrigerant Tubing; Follow Handling Instructions Carefully. Flammable Refrigerant Used.
- The ice maker should be installed under the safety standard for Refrigeration Systems, ASHRAE15. The ice maker shall not be installed in corridors or hallways of public buildings.
- If the unit has with problem and needs to be maintained, replacing it with similar components and servicing shall be done by factory-authorized service personnel, to minimize the risk of possible ignition due to incorrect parts or improper service.

IMPORTANT:

- The wires in this mains lead are colored under the following code
- **Green or Green with a strip of yellow:** Grounding
- **White:** Neutral
- **Black:** Live
- To avoid a hazard due to the instability of the appliance, it must be placed on an even or flat surface.

GETTING TO KNOW YOUR UNIT

1. Float switch
2. Secondary water reservoir: It connects directly with the evaporator
3. Water reservoir
4. Maximum water level
5. Filter
6. Control Panel
 - **A.** Ice-making and cleaning buttons
 - **B.** Ring indicator light
 - **C.** Water lack indicator light
 - **D.** Ice full indicator light
7. Top cover, removable from the top
8. Hot Air outlet
9. Ice basket
10. Water drain cap: at the front bottom side of the unit
11. Ice scoop
12. Handle



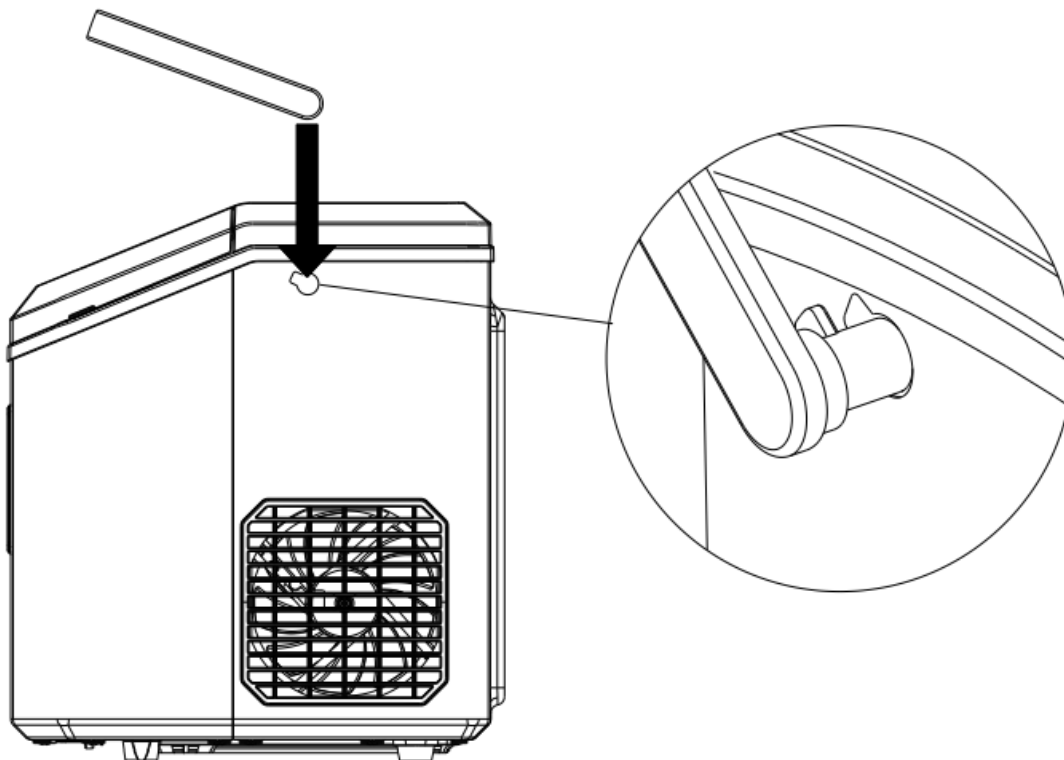
OPERATING PROCEDURES & MAINTENANCE

1. Remove the exterior and interior packaging, and then check all the accessories are included. If any parts are missing, please contact our customer service.
2. Remove all the tapes on the unit; take out the accessory parts inside.
3. Clean the interior with lukewarm water and a soft cloth.
4. Locate your ice maker on a level counter table far from direct sunlight and other sources of heat (i.e.: stove, furnace, and radiator). Make sure that there is at least 6 inches between the back and sides of your ice maker with the wall.
5. Allow it 2 hours for the refrigerant fluid to settle down before plugging your ice maker in.
6. The power plug must be accessible directly.

WARNING: Fill it with potable water only. Only use drinking water.

ASSEMBLE HANDLE

Rotate the handle to the same angle as the mounting hole on the machine, and put it on the machine.



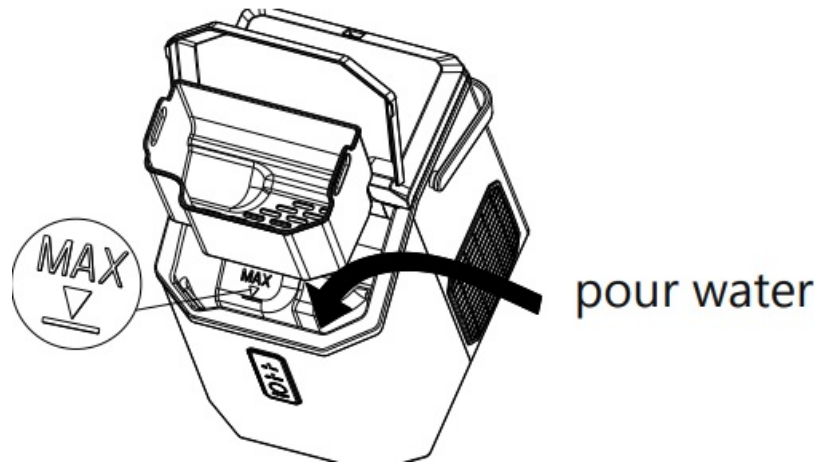
DANGER ASSEMBLE HANDLE

- Rotate the handle to the same angle as the mounting hole on the machine, and put it on the machine.
 - Improper use of the grounded plug can result in the risk of electrical shock. If the power cord is damaged, please call our customer service.
1. This unit should be properly grounded for your safety. The power cord of this appliance is equipped with a grounding plug that mates with standard grounding wall outlets to minimize the possibility of electric shock.
 2. Plug your appliance into an exclusive, properly installed, grounding wall outlet. Do not under any circumstances; damage the grounding means of the plug. Any questions concerning power and/or grounding should be directed toward a certified electrician.
 3. This appliance requires a standard 110-120Volt, 60Hz electrical outlet with good grounding means.
- Before using your ice maker, it is strongly recommended to clean it thoroughly.
 - Unplug the unit before cleaning or making any maintenance.
1. Take out the ice basket.
 2. Clean the interior with diluted detergent, warm water, and a soft cloth.
 3. Then use the water to rinse the inside parts, and drain out the water by unplugging the drain cap on the front bottom side.
 4. The outside of the ice maker should be cleaned regularly with a mild detergent solution and warm water.
 5. Dry the interior and exterior with a clean soft cloth.
 6. When the machine is not to be used for a long time, drain water completely & dry the interior.

USING YOUR ICE MAKER

How to start the unit

1. Take out the ice basket, and pour potable water into the water reservoir, 0.3 gallons of water at most at one time.
2. Put back the ice basket.

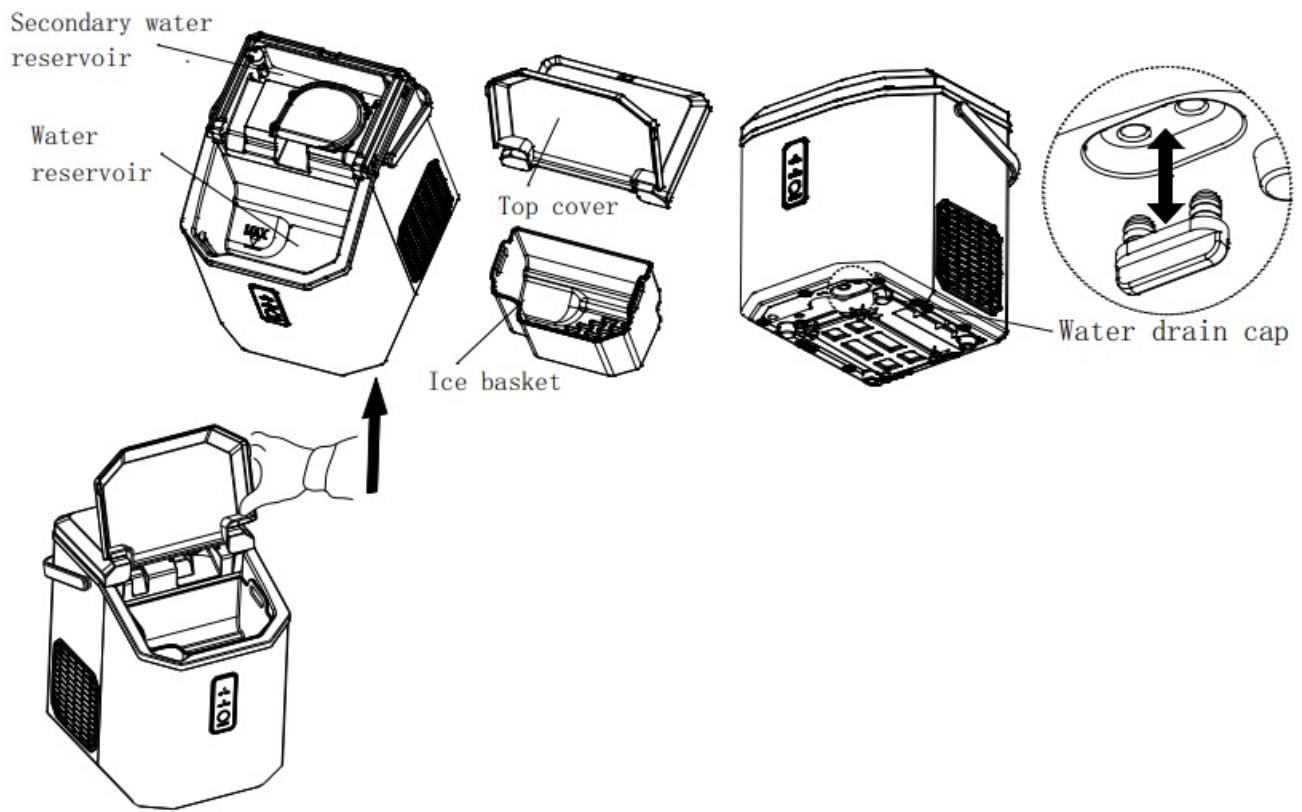


3. Plug in and the ring indicator will be red. If you press the "OF/OFF" button, the machine will start making ice; If long press the "OF/OFF" button, it will do automatic cleaning.

CLEAN

For the first time, or the clean procedure has not been running for a long time, it is highly recommended to run this procedure at first.

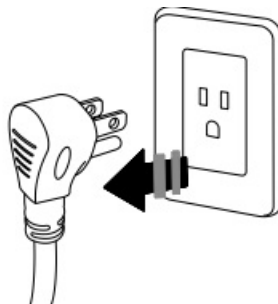
1. Before the cleaning procedure, please make sure the water drain cap has been inserted into the appliance; otherwise, it will not work properly.
2. Press the "OF/OFF" button for 5 seconds, The Ring indicator light flashes white, it will run cleaning procedure for 15 minutes and automatically exit, press this button again during the cleaning procedure, and it will exit immediately.
3. After the cleaning procedure, remove the top cover and the ice basket, rinse the main water reservoir and the secondary water reservoir, then move the appliance to the edge of the desktop, make sure that the appliance is placed steady, place a water container under the appliance, remove the drain cap from the bottom, dirty water will drain into the water container, then reinsert the drain cap.



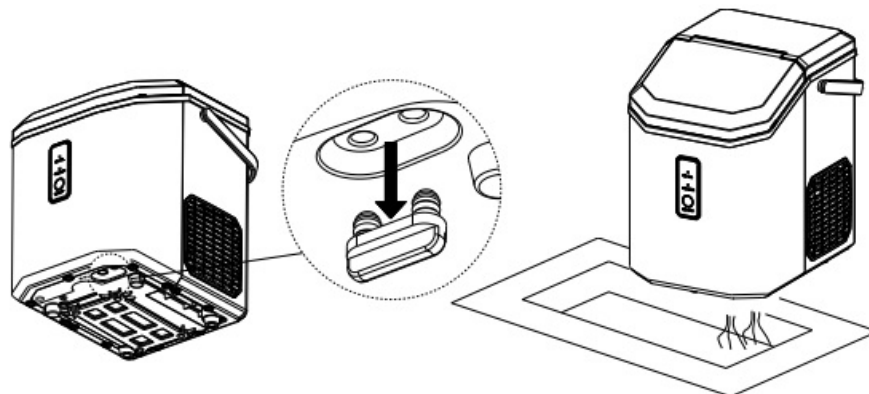
- **Tips:** remove the top back cover by pulling up the front transparent cover gently.
- Change water in the water reservoir every 24 hours to ensure a reasonable hygiene level.
- If the unit isn't to be used, drain all water & dry the water reservoir.

System Cleaning/Sanitizing Procedure

1. Unplug the nugget ice maker.



2. Take off the bottom drain cap and drain out the water to a sink. See the figure below.

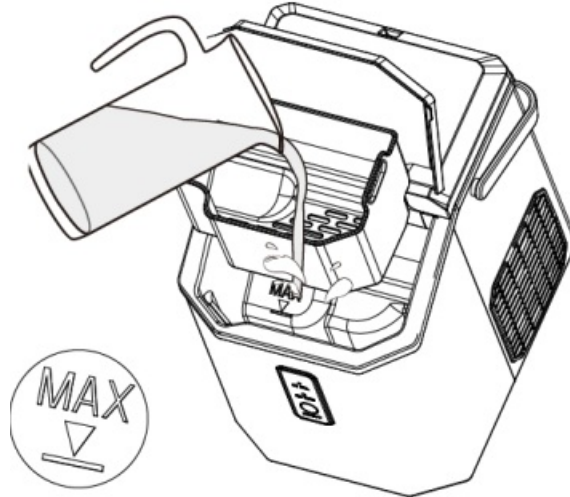


3. Solve by diluting one teaspoon of household bleach with five cups of water for daily cleaning.
 - For monthly cleaning of removing mineral deposits, please use the white vinegar instead of the above water solution (and then plug in to turn on the “cleaning function” for about 5 minutes.

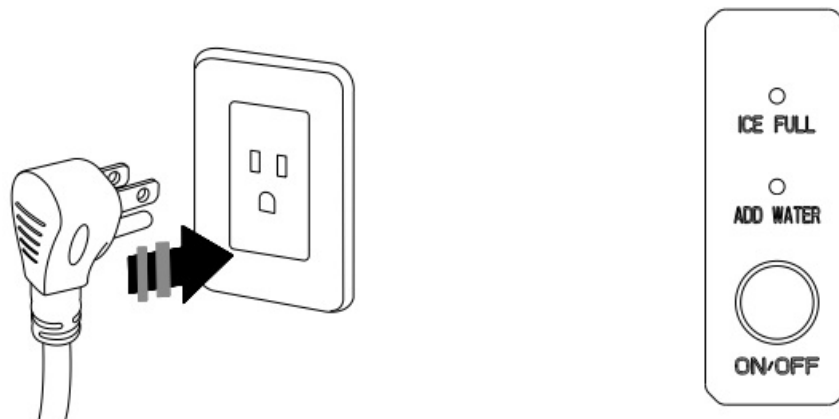
- After that, unplug it again to leave the white vinegar in the unit for more than 12 hours).



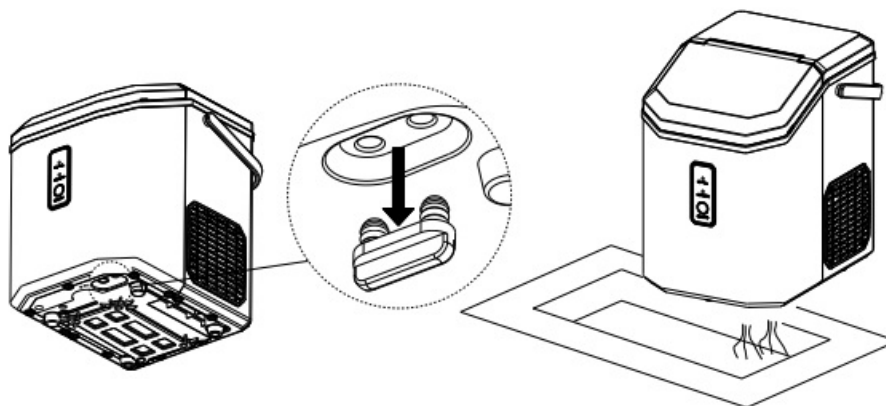
4. Pour the solution into the water reservoir, up to the “MAX” water level. See the figure below.



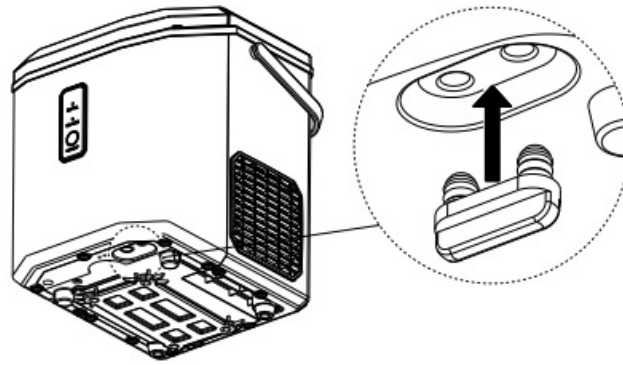
5. Plug in the Nugget ice maker, and press and hold the “ON/OFF” button for 5 seconds to initiate the cleaning process(15 minutes). See the figure below.



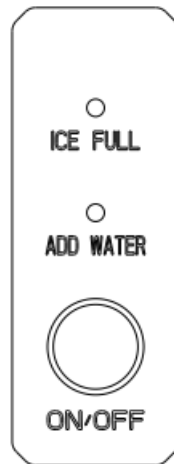
6. When the “ON/OFF indicator lights off, take off the drain cap and drain out the water to a sink.



7. Repeat steps 4 to 6 with fresh water for two more cycles to rinse the inside.
8. Replace the drain cap on the bottom. See the figure below.



9. When completed, fill the unit with fresh water and press the “OF/OFF” button to start the making process. See the figure below.

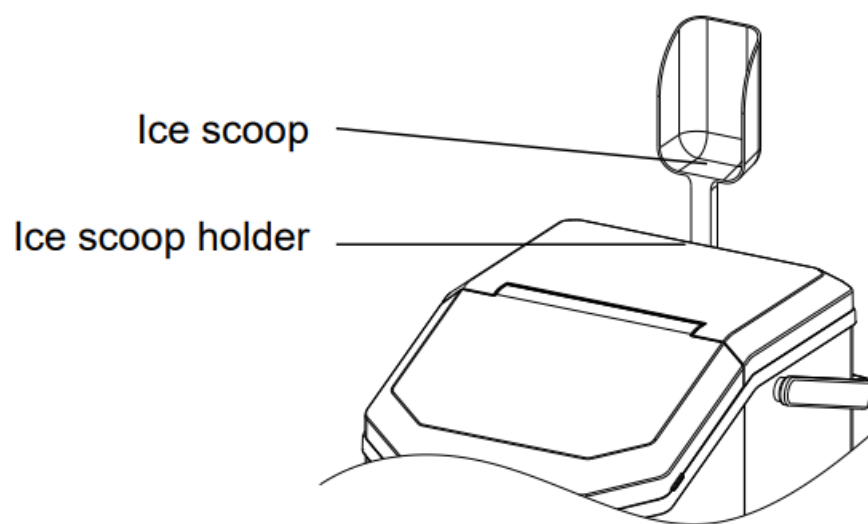


How to obtain the ice cube

1. Before we start making ice, please make sure the water drain cap has been inserted into the appliance; otherwise, it will not work properly.
2. Press the “OF/OFF” button, The Ring indicator light flashes white it begins to work, and press this button again, it will stop making ice.
3. For the first time, or if the appliance has not been used for a long time, it is recommended to clean this appliance before you start to make ice.
4. In the process of making ice, if the “Add water” indicator light is on, and the machine stops working, it needs to add water. After adding water, please restart the machine; Otherwise, it needs to wait for a long time and then automatically start making ice again.
 - When the ice-making machine is restarted, the compressor will have a waiting time of 3 minutes.
5. When the machine is full of ice, it will automatically stop working. The “ice full” indicator light will be on, and the ring indicator light will be white. After the ice is removed, the machine starts working automatically.

ice scoop position

Put the scoop on the top back cover



TROUBLESHOOTING


PROBLEM	POSSIBLE CAUSE	SOLUTION
The “Add Water ” indicator turns on	Lack of Water.	Stop the ice maker, fill the water, and press the “ OF/OFF ” button again to restart the unit.
ICE FULL indicator turns on	There is too much ice.	Suggest you obtain the ice cube.
	No ice cube inside.	Remove the probable obstacle inside or clean the inside wall of the ice storage
The ring indicator light flashes red	The ambient temperature or water temperature in the inner tank is too high.	Please run the ice maker below 90 Fahrenheit degree ambient and pour colder water into the tank.
	Refrigerant liquid leakage.	Press the “ OF/OFF” button twice, and restart the making program, if this problem shows up again, verify by a qualified technician.
	The cover motor is broken	
	The pipe in the cooling system is blocked.	
Making Ice too slowly	The Hot Air outlet has been blocked by something.	Hot Air outlets must be guaranteed to have more than 15 CM of ventilation distance.
	The water temperature in the inner tank is too high.	Water temperature requirement between 7°C-32°C.
	Refrigeration system malfunctions.	Verify it by a qualified technician.
Water leakage	The drain plug is not in place	Put the drain plug in place.
	The Pipe Joint in the appliance may be loose.	Verify it by a qualified technician.
	The seal has reached service life	Verify it by a qualified technician.

TECHNICAL PARAMETERS

- **Model** HZB-15NA
- **Protection** Type I
- **Power** 115V/60Hz
- **Ice Making** Current 2.7A
- **Refrigerant** R600a / 16g
- **Vesicant** C5H10
- **Dimension** 287x220x322mm

- Thank you for purchasing this product! If you have any questions about the product, such as missing parts, damaged products, product assembling, and operation please contact us via Amazon Message or customer service number: 213-4467172 or 661-4358826
- **IMPORTANT** Please call our customer service department for any consulting: 213-4467172 661-4358826 (8:30 am – 5:30 pm P.S.T .)

Documents / Resources

	<p>COWSAR Z580032 Portable Nugget Ice Maker [pdf] User Manual Z580032 Portable Nugget Ice Maker, Z580032, Portable Nugget Ice Maker, Nugget Ice Maker, Ice Maker, Maker</p>
---	---

References

- [User Manual](#)

Manuals+. [Privacy Policy](#)

This website is an independent publication and is neither affiliated with nor endorsed by any of the trademark owners. The "Bluetooth®" word mark and logos are registered trademarks owned by Bluetooth SIG, Inc. The "Wi-Fi®" word mark and logos are registered trademarks owned by the Wi-Fi Alliance. Any use of these marks on this website does not imply any affiliation with or endorsement.