



COWIN DiDa Portable Wifi and Bluetooth Speaker User Guide

[Home](#) » [COWIN](#) » COWIN DiDa Portable Wifi and Bluetooth Speaker User Guide 





DiDa Portable Wifi and Bluetooth Speaker
FCC ID:2AB5T DiDa

Contents

- [1 Introduction](#)
- [2 Function Profile](#)
- [3 GETTING STARTED](#)
- [4 Mode Switch](#)
- [5 Bluetooth Connection](#)
- [6 Microphone Usage](#)
- [7 Cable connection \(Line-in\)](#)
- [8 Charging and LED Indicator Light](#)
- [9 Product Care](#)
- [10 LED Instructions](#)
- [11 Things to try](#)
- [12 Documents / Resources](#)
 - [12.1 References](#)
- [13 Related Posts](#)

Introduction

Thank you for purchasing the DiDa – WiFi speaker, the entirely new concept.

It is totally different with Bluetooth speaker and traditional speaker: One or more pieces speaker can be connected with your smart device via router to play same music or different music at the same time.

Specification

DiDa

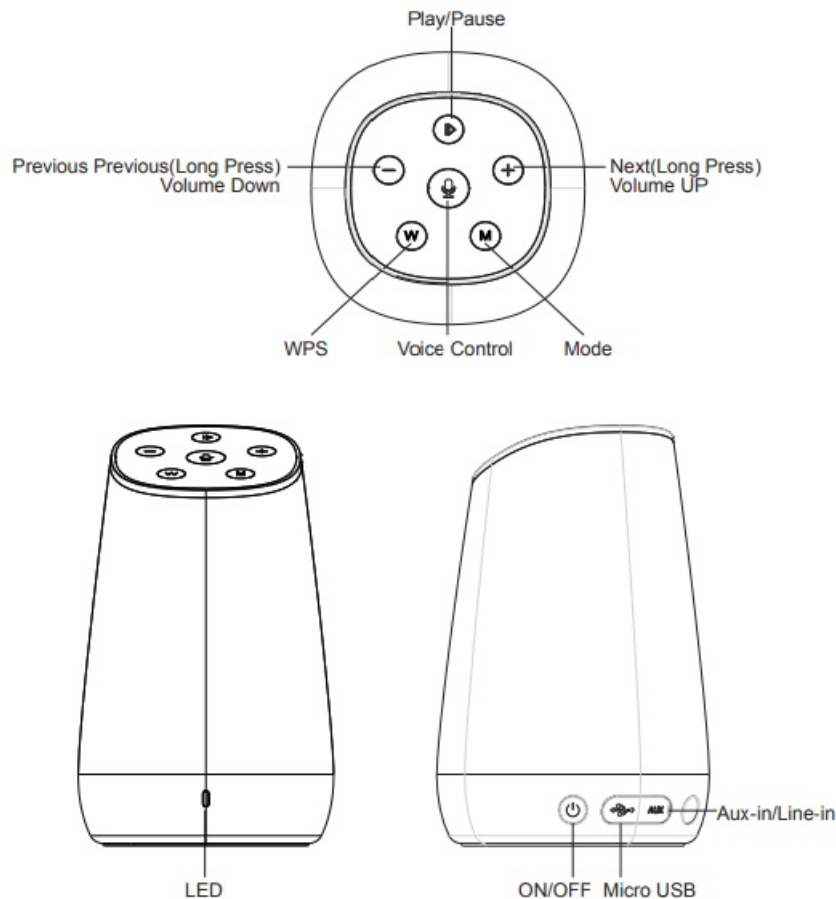
Output Power:	15W
S/N:	>75dB
Frequency range:	80Hz-20KHz
Power supply:	Lithium battery or USB cable
Function Spec:	WiFi, Bluetooth, Microphone, Line-in
Supported Device:	iPhone, iPad, iPod touch, Android Smartphone and Tablet, Windows PC etc.
Support Mode:	Network Connection, Direct Connection, Bluetooth Connection, Cable connection
Size:	6.04×3.67×3.67 inches

Rechargeable battery with charging option from USB cable

Operating Range:

Bluetooth Mode: operating range up to 33 ft

Function Profile



GETTING STARTED

Download the COWIN app in the App Store or Google Play store, then install the app on your device.



Alternate download address

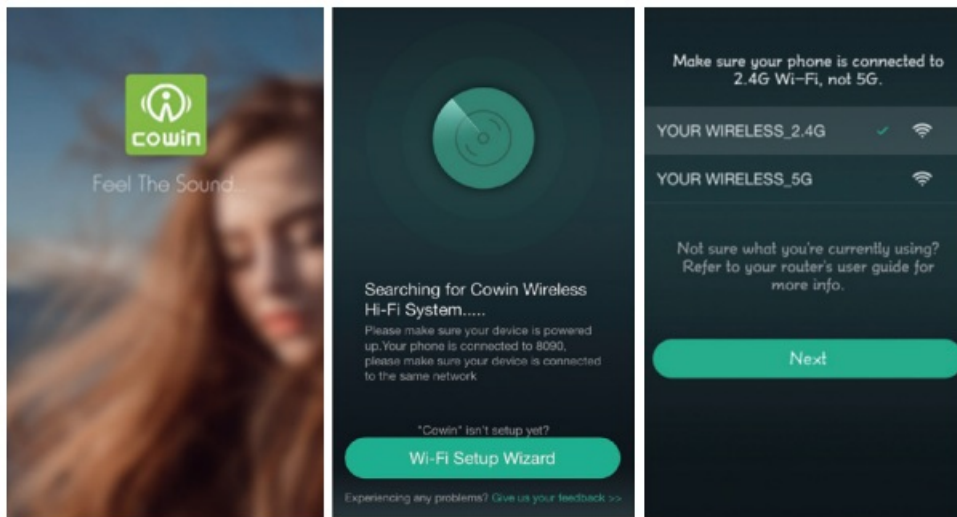
iOS app <https://dln.bz/i/cowin/2.8.4223>

Android app <https://dln.bz/a/kayo/2.8.0.170321>

If you any question ,just contact us for injuiury

CONNECTING TO WIFI

1. Ensure your device is connected to a wireless network, then open the COWIN app. On the home screen, press "Wi-Fi Setup Wizard" button. You will be prompted to choose your network. Choose "YOUR WIRELESS_2.4G" from the network list. Please note: only 2.4GHz networks are supported.



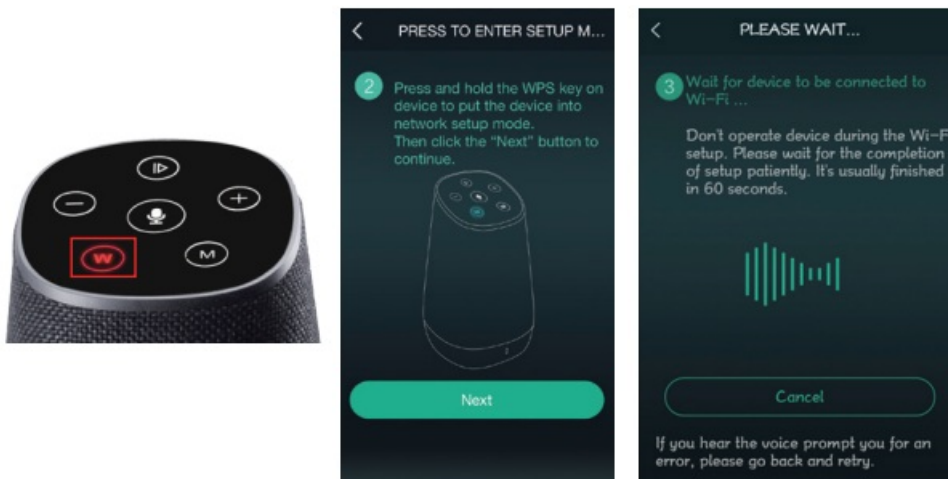
2. Power on your COWIN DiDa by pressing and holding the power button for 3 seconds. The mode indicator will flash white when ready to pair to your network.



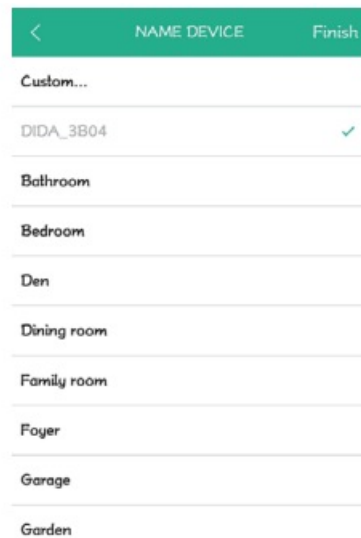
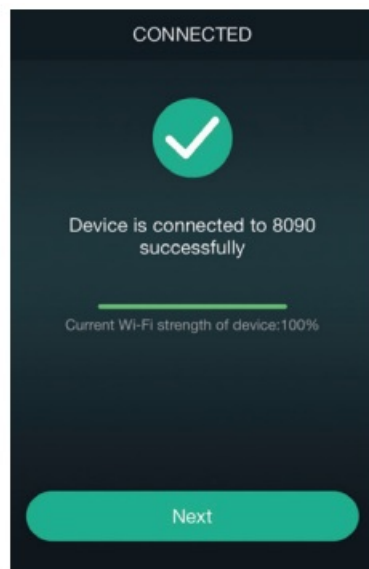
3. Type the password of your wifi network and press next.



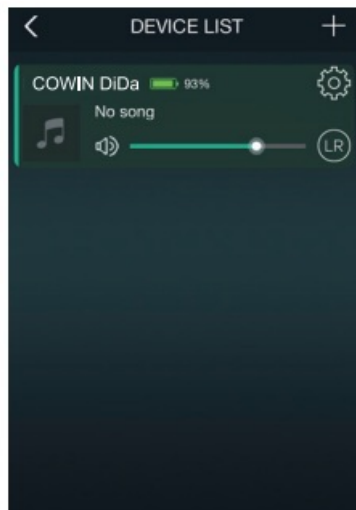
4. Long Press the WPS button till it turns Red.



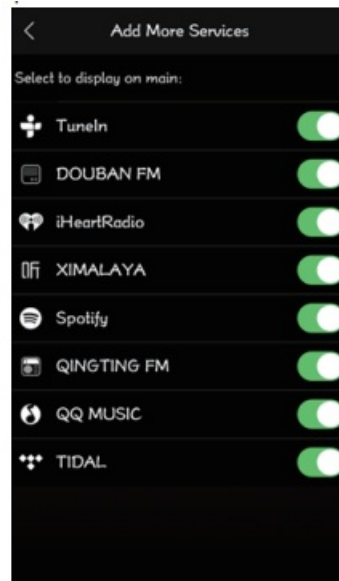
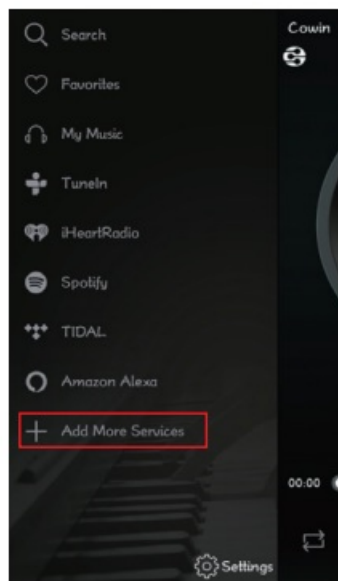
5. The App searches the speaker and automatically adds it to your network.



6. You can now select the speaker's name or set a customized one.
7. To add more speakers, press+ on the top right and repeat steps 2-6.



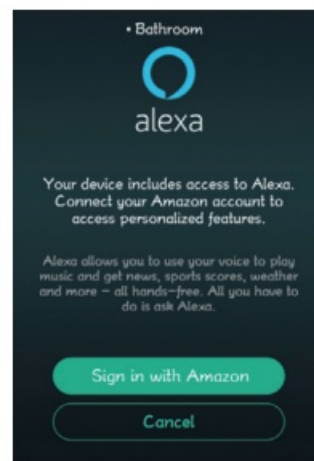
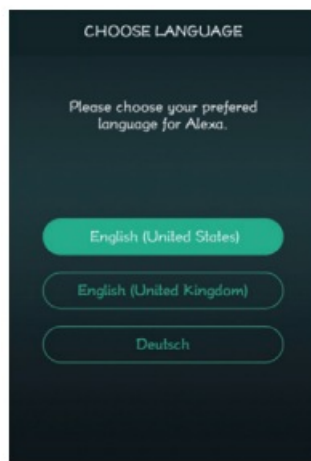
8. Add your local music service provider to enjoy more music. Click the "Add More Services" button.



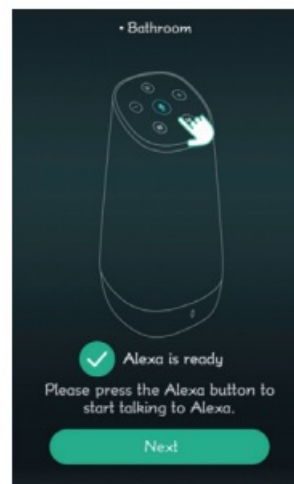
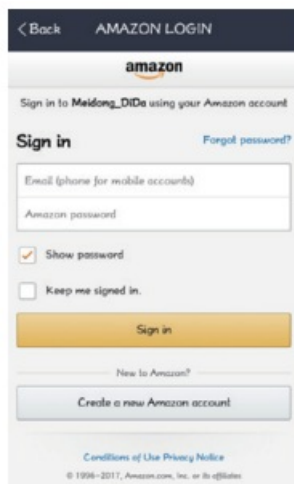
9. Increase the source service providers, need to open the source service providers behind the button.

LOGGING INTO YOUR AMAZON ACCOUNT

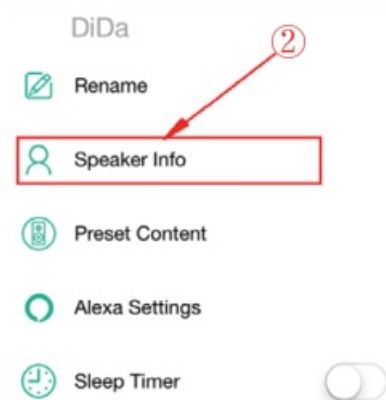
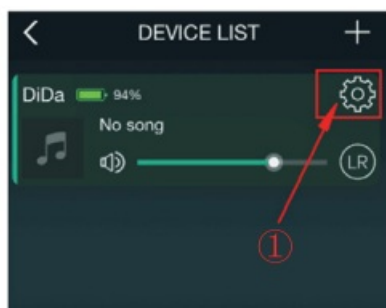
Once connected to your network, press the Login button to log in to your Amazon account, or skip this step.
 Note: You cannot utilize Alexa Voice Service if you are not logged in to an Amazon account.



Sign in to your Amazon account. If you do not already have an Amazon account, choose “Create a new Amazon account.” It may take a few seconds for your account to load. Once logged in, the app will confirm your login successful. Note: You will be prompted to agree to Amazon’s terms when logging in.



DiDa Setting WiFi Password



1. After connecting with wifi, into the wifi connected successfully page of COWIN App.
2. Then click the “setting” button, select “speaker info” , into the next page.
3. Select the “personal hotspot”, then click the” Wi-Fi password”, and you can set your own DiDa Wi-Fi password.

Note: The DiDa Wi-Fi password only can be set or changed under the opening of the “personal hotspot”.

To activate Alexa, tap the microphone button on the top of your speaker. You will hear a short tone. Next, ask Alexa a question, such as, “Alexa, what is the weather today in New York?” Or you can tell Alexa to do something, like, “Alexa, add milk to my shopping list.”

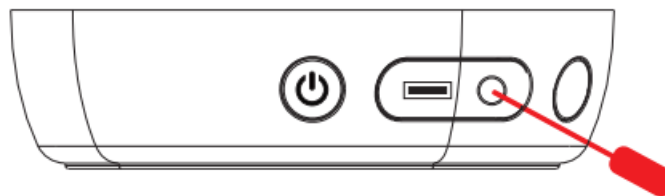


Note: After Network Connection, the password of speaker is always the password of the last router you connect, which will be used when Direct Connection.

If you forget the password of speaker, just use the router you have to Network Connection, then password will be this router's.

Resetting your DiDa speaker

To reset the DiDa insert either a toothpick, straightened paper or Insulation object clip into the AUX IN jack until all touch button lights flash. You are successful complete resetting after all light off.



Mode Switch

When turn on speaker, it will be WiFi Mode automatically

1. Long time press “M” turn to Bluetooth mode
2. Long time press “M” again, it will turn back to WiFi mode

Bluetooth Connection

Long Press mode switch key “M” to change the mode from WiFi to Bluetooth .

Then will see blue light “M” flash . The speaker is in Bluetooth mode and waiting for connection.

1. Navigate the Bluetooth function of your device (Select “Set Up” Bluetooth or turn “ON” Bluetooth)
2. Select “Search” or “Discover” devices
3. Select Bluetooth “DiDa”
4. After completing the steps above, a message on your device will appear confirming that your device is now paired/connected.

In case of unsuccessful pairing, turn off the speaker and restart it.

Microphone Usage

When a phone call comes in, you could talk through the microphone on speaker.

Tips:

When you make a call from your mobile phone the call will (subject to phone settings) automatically transfer to the speaker.

Direct Connection

(This is used when there is no network, such as outdoor activity)

- Turn on the speaker. The mode indicator will flash white **M**.
- Enter WLAN setting of your device and turn on WLAN
- Search the WiFi name of speaker "DiDa_XXXX", connect.
- Enter APP, play music or add more speakers

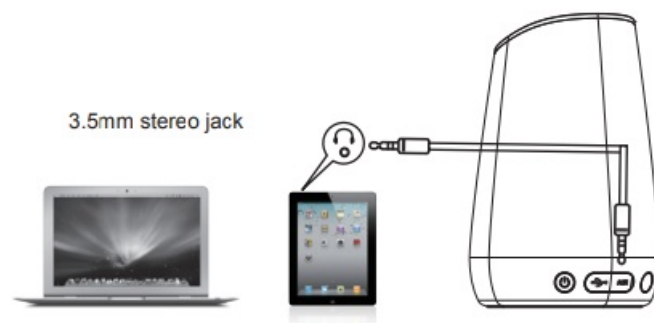
Remarks: The first speaker you connected just like the router, if you turn off the speaker, other speakers will be disconnected. If you turn off other speakers, the rest ones remain work.

The possible reasons of failure of adding devices:

1. The most possible reason is that your smartphone connect with the WiFi router which is 5G, then device can't receive the request of connection sent from smartphone.
2. If you have a dualband router (5G + 2.4G), please set the 2.4G password same as the 5G, then maybe connectable, maybe not, depends on the routers.
3. If the router set Enterprise WPA will fail to connect, as we don't support Enterprise WPA.
4. Belows setting on router will also result in failing to add device:
 - a) If the IP address is assigned statically
 - b) If there is MAC address limitation, only specific MAC address could connect
 - c) The router is hide
5. Some routers has maximum connection, when exceed the maximum, will fail to add device.
6. Network is too bad, may be successful after trying many times.

Cable connection (Line-in)

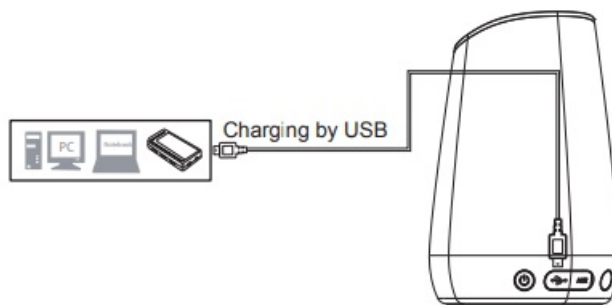
Use provided audio cable as below to connect with speaker:



The 3.5mm audio cable of COWIN DIDAcn be effective under the boot state, and which will have hint tone. This 3.5mm audio cable does not work under the off state.

Charging and LED Indicator Light

Built-in lithium battery can be charged by Micro USB cable, see below picture:



Product Care

Your device is designed to be durable, but as an electronic device, it must be treated carefully. Putting unnecessary pressure on it or striking the device against other objects may cause damage:

- Do not drop, crush, bend or apply excessive force to the device.
- Do not expose your device to moisture, extreme or prolonged heat, cold, humidity, or other adverse conditions. Avoid storing it in damp, humid or wet places. It is not waterproof.
- Clean the unit with a soft cloth or damp chamois leather. Never use solvents.
- The unit can only be opened by qualified person.
- This device contains magnets. Keep magnetic field sensitive products such as credit cards and video screen away from this device to avoid damage or malfunction.

LED Instructions

Button/LED	Color	Action	Significance
Status-LED	Red	Shines	Battery is charging
	White	Shines	Switched on
Status-LED	White	Flashes	WLAN-Connection direct Wi-Fi connection
		Shines	Connected with router
	Blue	Flashes	Searches Bluetooth- device
		Shines	Connected With Bluetooth Device
WPS button	Red	Flashes	Connection with Router
Voice control button	Blue	Shines	recording
		Flashes	Processing
		Slow Flashes	Replying

Things to try

Listen to Music

“Alexa, turn it up!”

Ask Alexa...

"Stop the music"

"Pause"

"Next song"

"Repeat this song"

Reminders

"Alexa, set a reminder"

Alex can remind you about things.

Ask Alexa...

"Remind me on Saturday to take out the recycling"

"What are my reminders this weekend?"

Order from Amazon

Use your voice to shop.

"Order light bulbs"

"Reorder toothpaste"

"Add a drone to my cart"

Weather

"Alexa, how's the weather?"

Ask Alexa...

"Will it rain tomorrow?"

"What's the weather in Honolulu?"

"Is it sunny in Philadelphia?"

Learn and Be Curious

Ask Alexa all kinds of questions.

"Alexa, why is the sky blue?"

"When's Thanksgiving?"

"How many euros in a dollar?"

"What's the capital of Costa Rica?"

"How many people live in Wyoming?"

For FAQs and more information please visit:



<http://qr19.cn/ASMxUm>

We provide 18-month warranty and life friendly customer service.
Any problem, please feel free to contact me, Our team will always
serve you and try our best to help you.

Register your product & protect your purchase for even longer!



+19293596668



support@cowinaudio.com




@cowin electronics



www.cowinaudio.com



Documents / Resources

	<p>COWIN DiDa Portable Wifi and Bluetooth Speaker [pdf] User Guide</p> <p>DiDa Portable Wifi and Bluetooth Speaker, Portable Wifi and Bluetooth Speaker, Wifi and Bluetooth Speaker, Bluetooth Speaker, Speaker</p>
---	---

References

-  [COWIN® | Official Website | You, Music, Nothing in the Way](#)
-  [Search - Manual-Hub.com](#)