


Covert WC30-V Cellular Camera



Covert WC30-V Cellular Camera Instructions

[Home](#) » [COVERT](#) » Covert WC30-V Cellular Camera Instructions 

Contents

- [1 Covert WC30-V Cellular Camera](#)
- [2 SD CARD SPECIFICATIONS](#)
- [3 Before Beginning](#)
- [4 Insert the SD card into the computer](#)
- [5 Using a MAC/Apple Computer](#)
- [6 Documents / Resources](#)
 - [6.1 References](#)
- [7 Related Posts](#)



Covert WC30-V Cellular Camera



WC30-V [124] Manual Firmware Update ZIP FILE Instructions

- This update Cannot be done on a Tablet or with a cellular device!

SD CARD SPECIFICATIONS

- **Our cameras function with a Standard SD card, Class 10, between 8-32 GB.** *We ONLY recommend Sony, ONN, or Covert SD cards. *We don't recommend using the San Disk brand, as they don't meet our requirements.
- **Please, don't use any cards that say** Ultra/Ultra Plus, High Performance, Platinum, Extreme, Premium, Tough, HD/High Definition, Plus, Elite, Pro, Image Mate, Edge, MICRO adapter, etc. These types of SD cards don't work well with our devices. They're designed to operate at a faster speed than our cameras' capability and will cause the internal components to malfunction.

Before Beginning

- Make sure your SD card is formatted. If there are any other files on the SD card, the firmware will not update.
- You can do this on the camera in the ON Position. You must wait for the camera to either "connection success" or "connection failed" before it will let you into the MENU. (This can take a couple of minutes)
- Once you see either, hit the MENU(M) button, arrow RIGHT to FORMAT, Select OK, arrow to YES, and Select

OK.

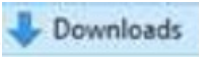
- Arrow right to Default, select OK, (on the keypad), arrow to YES, Select OK. (This will restore the camera to factory settings.)
- You can then turn the camera OFF.

STEP 1 If you're updating more than 1 camera. You'll need to put the files onto your SD card each time. You won't need to download the files again, use them from your desktop! The files won't stay on the SD card after updating the camera.


Please don't change the file names! Only download the ZIP File once! If you download the file more than once and there is a number beside it (1),(2), etc., Any of these things will cause the update to be unsuccessful.


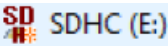
Insert the SD card into the computer

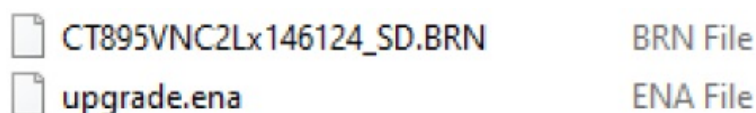
STEP 2– (Using a Windows Computer)

- Download the WC30-V ZIP file. (If you don't have a "Download" option. You'll have "SAVE AS", don't change the file name!)
- You will then need to open your DOWNLOADS folder.
- You should see the ZIP file in your downloads folder .
- Left click & hold, drag, and drop the file out onto your desktop.

- Once the ZIP file is on your desktop .
- You will then open the ZIP file and click & hold, drag, and drop the 2 files individually onto your


desktop/Computer background .

- You can then pull up your FILE Explorer .
- On the left side scroll to the bottom and left-click on the SDHC file  or whichever your SD card is reading.
- You will then click & hold, drag, and drop the 2 files individually from the desktop onto the SD card.

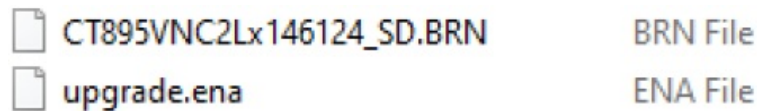


These two files are the only things that need to be on your SD card.

Using a MAC/Apple Computer

- Download the WC30-V ZIP file. (If you don't have a "Download" option. You'll have "SAVE AS", don't change the file name!)
- You will Double click on the ZIP file to open it. It will put the 2 files into an unzipped folder on your Desktop.
- You will need to open this folder and remove the 2 files (THEY CANNOT BE IN A FOLDER ON THE SD CARD)
- You can click & hold, drag, and drop each file individually to your Removeable Disk  OR SD card icon.

(Whichever it reads as)



These two files are the only things that need to be on your SD card.

STEP 3– If you are updating more than 1 camera. You will need to put the files onto the SD card each time. The files will not stay on the SD card after updating the camera.

- Once the 2 files are on the SD card, take the SD card out of the computer.

STEP 4

- With the camera in the OFF position. Insert the SD card.
- ****HOLD** the UP ARROW while simultaneously turning the camera to SETUP mode.
- Once the camera screen turns ON, you can let that ARROW UP button go.
- Camera will show Firmware updating.

STEP 5

- Once the Screen goes off, turn the camera OFF and then back to setup.
- Do not need to wait for the camera to connect to the network.
- Press menu(M).
- Hit the RIGHT arrow until you see DEFAULT, select OK, (on the keypad), arrow to YES, and Select OK. (This will restore the camera back to factory settings.)

STEP 6

- The firmware version should end at 124
- To see the FW version on the camera. Press the RIGHT arrow key until you see SOFTWARE/FIRMWARE version.
- Firmware Version should show: CT895VNC2Lx146124

IF you see the correct firmware on the camera. Proceed with the next steps.


STEP 7

- Hit the MENU button to exit the MENU.
- Wait for the camera to fully connect “Connection Success.”
- Press the LEFT arrow key to send a manual photo.

You will see several things pop up on the screen while connecting: INIT 4G, request command, send status report, status report success, upload thumbnail, and connection success. Once you see Connection Success, your camera is fully connected.

- In 30 seconds to a minute, you should have a new photo on your app! You can then Turn the camera ON, and you should be good to go!

Documents / Resources



[Covert WC30-V Cellular Camera \[pdf\] Instructions](#)
WC30-V Cellular Camera, Cellular Camera, Camera

References

- [User Manual](#)

Manuals+ Privacy Policy

This website is an independent publication and is neither affiliated with nor endorsed by any of the trademark owners. The "Bluetooth®" word mark and logos are registered trademarks owned by Bluetooth SIG, Inc. The "Wi-Fi®" word mark and logos are registered trademarks owned by the Wi-Fi Alliance. Any use of these marks on this website does not imply any affiliation with or endorsement.