



COSTWAY HW67486 Folding Working Table User Manual

[Home](#) » [COSTWAY](#) » COSTWAY HW67486 Folding Working Table User Manual 

Contents

- [1 COSTWAY HW67486 Folding Working Table](#)
- [2 Product Information](#)
- [3 Product Usage Instructions](#)
- [4 MAXIMUM RECOMMENDED WEIGHT LOADS](#)
- [5 CAM LOCK SYSTEM OPERATION](#)
- [6 Parts and Hardware List](#)
- [7 Assembly Instructions](#)
- [8 Documents / Resources](#)



COSTWAY HW67486 Folding Working Table



Product Information

The Folding Working Table/Klappbarer Schreibtisch/Bureau Pliant /Escritorio Plegable/Tavolo Pieghevole con Ruote/Biurko skladane, model number HW67486, is a versatile and portable working table that can be used for various purposes. It is designed to be used in Canada, United States, United Kingdom, Spain, Germany, France, Italy, Russia, Japan, and Australia. The table is equipped with a cam lock system that ensures stability and safety while in use. It has a maximum recommended weight load of 200 lb. (90.7 kg) on the large top panel and 50 lb. (22.6 kg) on the small top panel. It is important to use the table only with the maximum weights indicated as using it with a load heavier than the maximum weight may result in instability or possible injury.

Product Usage Instructions

1. Before assembling the table, make sure you have all the required parts and hardware present as listed in the parts and hardware list provided.
2. Assemble the unit on a carpeted floor or the empty carton to avoid any scratch.
3. Lay out the end frames (F and G) with the holes facing up. Securely screw the cam bolts (2) into the threaded sockets as shown.
4. Attach two fixed shelves (C) to the middle end frame (F) by engaging two cam locks (1) in each. Repeat the same procedure to attach the right end frame (G) at the opposite end.
5. Combine the top panels (A and B) together by attaching two butt hinges (8) at the joint with six 15 mm screws (6) per hinge, using the pilot holes as a guide.
6. Securely screw one locator pin (7) into the threaded insert on the large top panel (A).
7. Attach the assembled pedestal to the small top panel (B) with four 50 mm bolts (5) as shown.
8. The table is now ready to use. To fold the table, simply rotate the cam lock counterclockwise to unlock the cam bolt and disengage the fixed shelves from the end frames. Fold the table and store it in a safe place.

Tools required for assembly are the hex wrench and open wrench provided and a Phillips screwdriver, not provided.

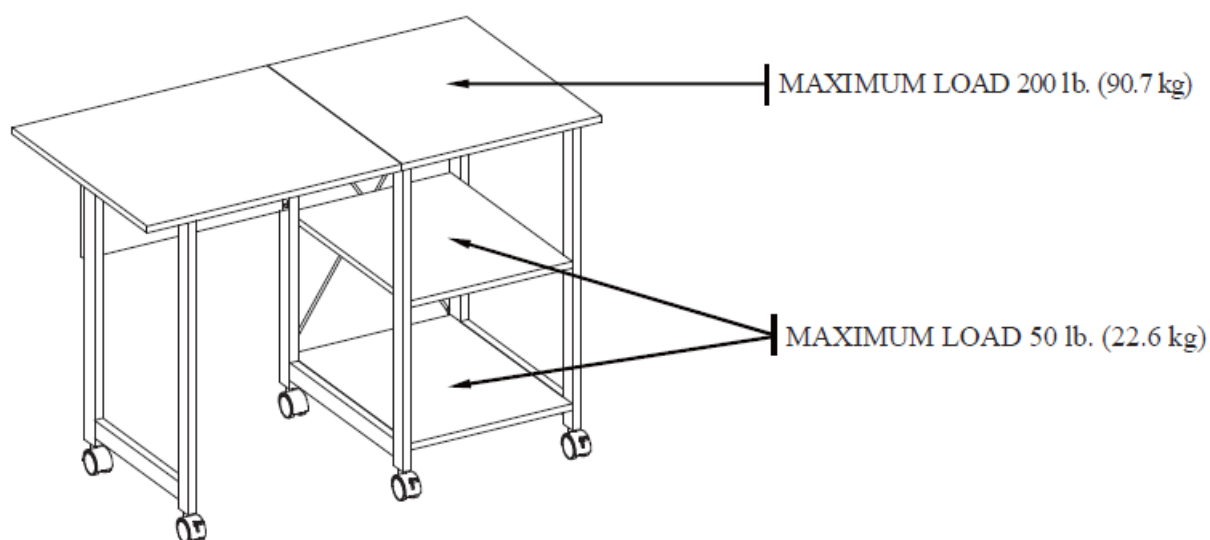
For more information on the cam lock system operation, please refer to the supplement provided in the user's manual/handbuch.

With proper usage and handling, the Folding Working Table Pliant will provide an easy shopping experience, good products, and efficient service from COSTWAY.

With your inspiring rating, COSTWAY will be more consistent to offer you EASY SHOPPING EXPERIENCE, GOOD PRODUCTS and EFFICIENT SERVICE!

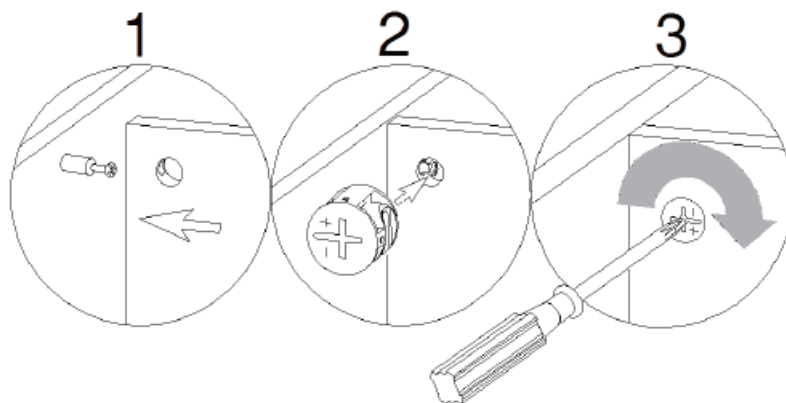
- **US office:** Fontana
- **UK office:** Ipswich
- **DE office:** FDS GmbH, Neuer Höltingbaum 36, 22143 Hamburg, Deutschland
- **FR office :** 26 RUE DU VERTUQUET, 59960 NEUVILLE EN FERRAIN, FR

MAXIMUM RECOMMENDED WEIGHT LOADS



THIS UNIT IS INTENDED FOR USE ONLY WITH THE MAXIMUM WEIGHTS INDICATED. USE WITH LOAD HEAVIER THAN THE MAXIMUM WEIGHTS INDICATED MAY RESULT IN INSTABILITY, CAUSING POSSIBLE INJURY

CAM LOCK SYSTEM OPERATION



HOW THE KNOCK DOWN (KD) ASSEMBLY SYSTEM WORKS

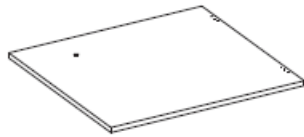
1. Screw the cam bolt into the threaded inserts on the panel. Connect both panels together; making sure cam bolt goes into the pre-drilled hole on the end of panel for cam lock.

2. Insert the cam lock into the pre-drilled large hole on the panel. Make sure the arrow on the face of cam lock faces out and points towards cam bolt.
3. Take a Phillips screwdriver and rotate the cam lock clockwise to lock the cam bolt in place

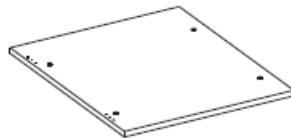
You are now ready to assemble the KD unit.

Parts and Hardware List

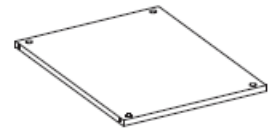
Please read completely through the instructions and verify that all listed parts and hardware are present before beginning assembly.



A- Large Top Panel (Qty. 1)



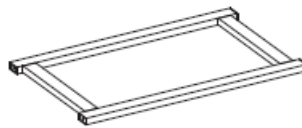
B- Small Top Panel (Qty. 1)



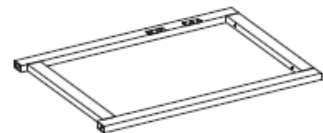
C- Fixed Shelf (Qty. 2)



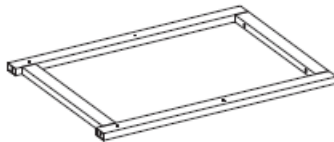
D- Back Panel (Qty. 1)



E- Left End Frame (Qty. 1)



F- Middle End Frame (Qty. 1)



G- Right End Frame (Qty. 1)



H- Metal Bar (Qty. 2)



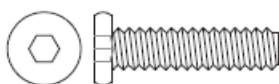
(1) Cam Lock (Qty. 8+1 extra)



(2) Cam Bolt (Qty. 8+1 extra)



(3) M6 x 12 mm Bolt (Qty. 4+1 extra)



(4) M6 x 25 mm Bolt
(Qty. 2+1 extra)



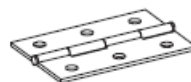
(5) M6 x 50 mm Bolt
(Qty. 4+1 extra)



(6) M4 x 15 mm Screw
(Qty. 18+1 extra)



(7) Locator Pin (Qty. 1)



(8) Butt Hinge (Qty. 2)



(9) Swivel Caster (Qty. 3)



(10) Locking Caster (Qty. 3)



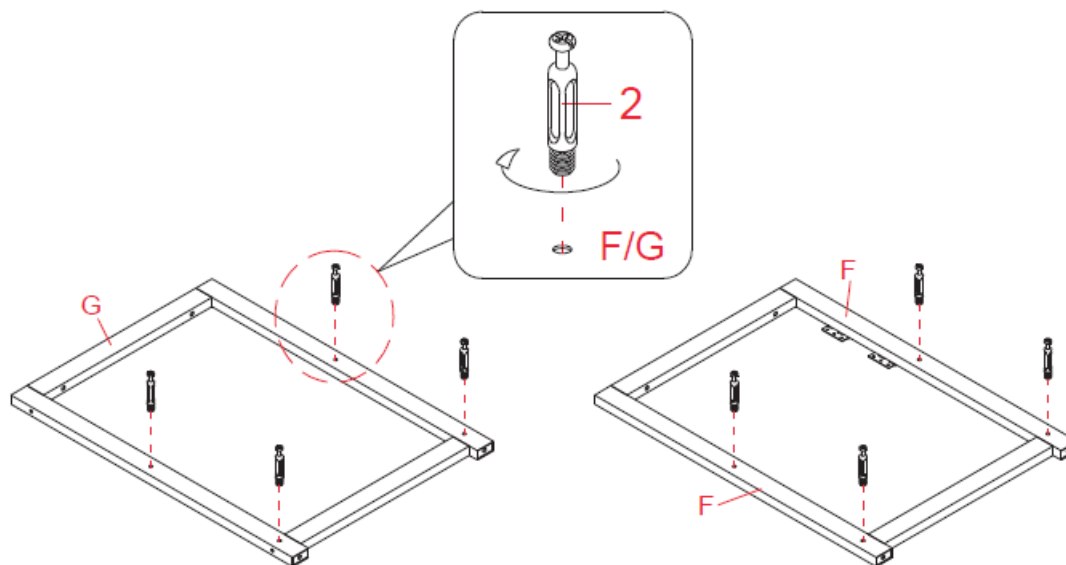
Hex Wrench (Qty. 1)



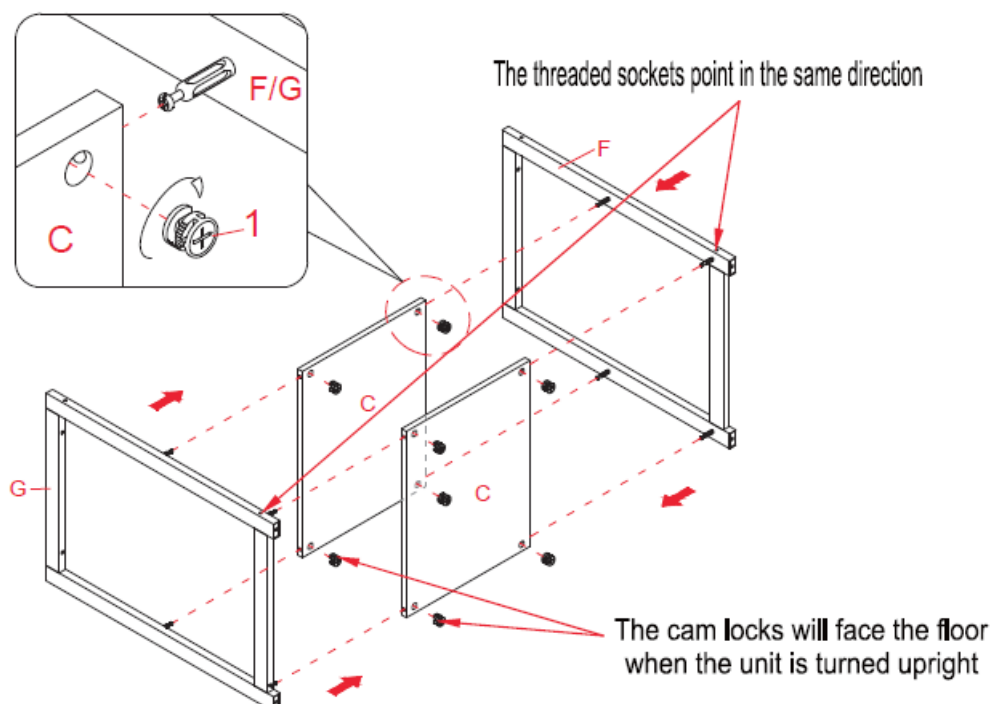
Open Wrench (Qty. 1)

Tools required: Hex wrench and open wrench (provided) and Phillips screwdriver (not provided).

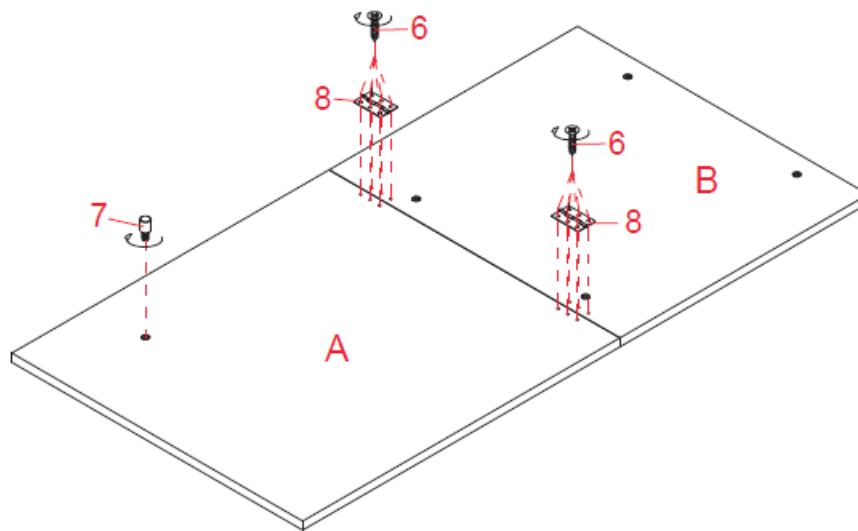
Assembly Instructions



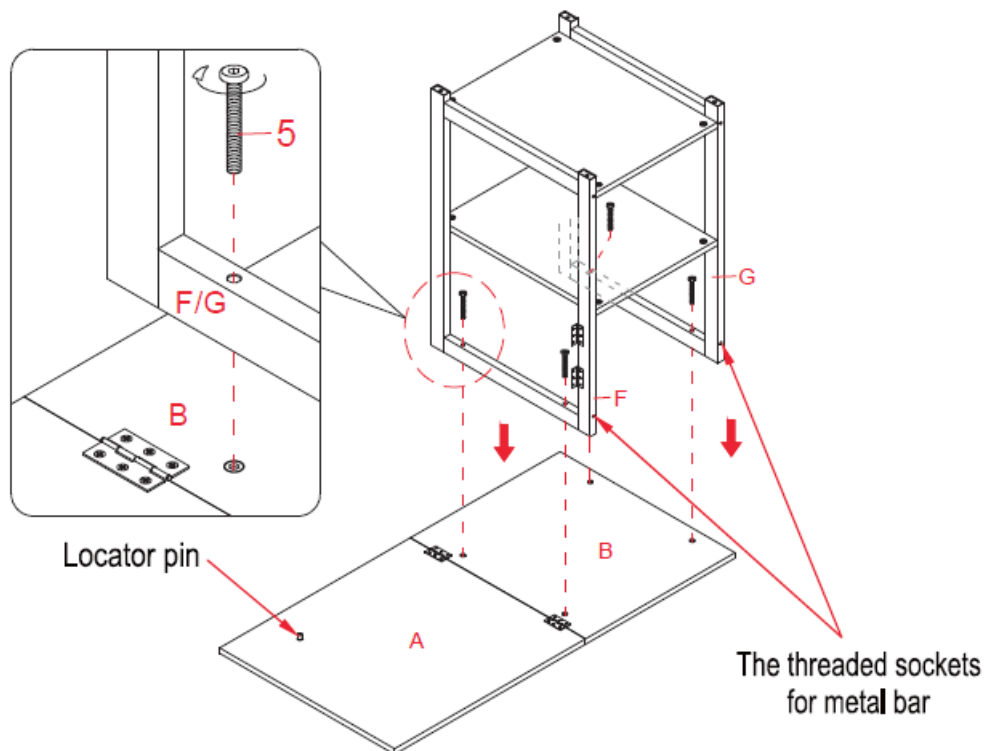
1. Unpack the unit and confirm that you have all the hardware and required parts. Assemble the unit on a carpeted floor or the empty carton to avoid any scratch.
2. Lay out the End Frames (F and G) with the holes facing up. Securely screw the Cam Bolts (2) into the threaded sockets as shown.



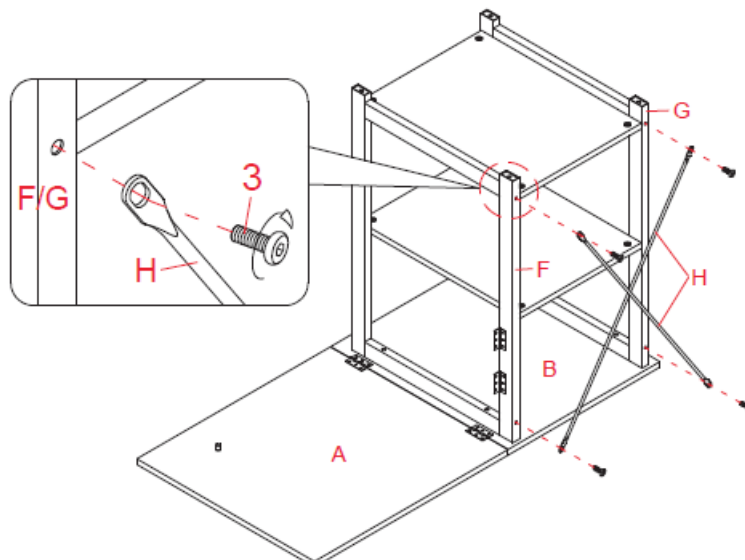
3. Attach two Fixed Shelves (C) to the Middle End Frame (F) by engaging two Cam Locks (1) in each (Refer to the Cam Lock system operation supplement).
4. Repeat the same procedure to attach the Right End Frame (G) at the opposite end



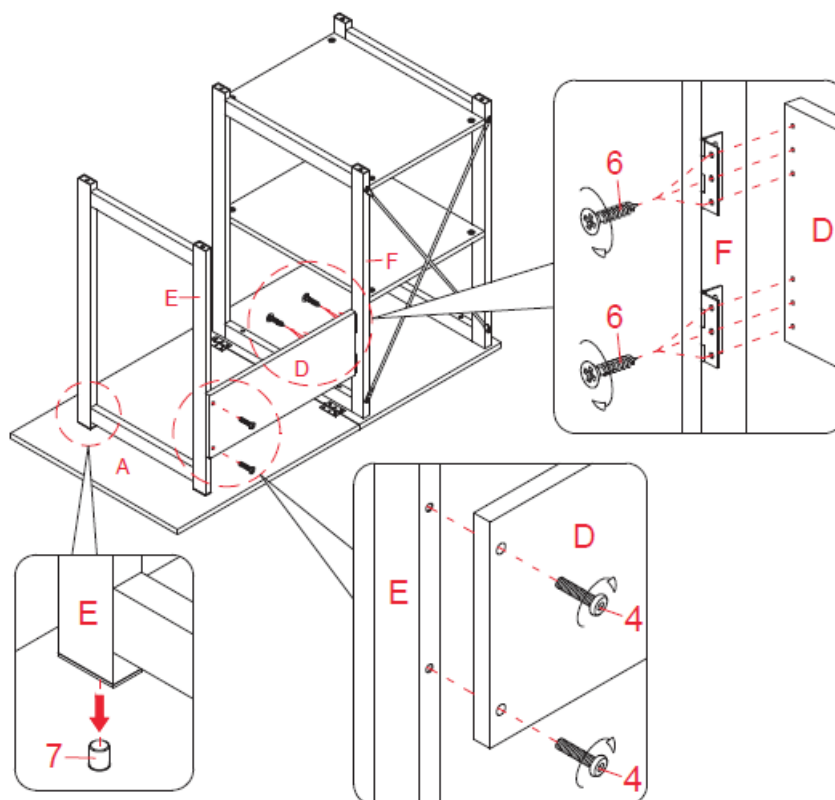
5. Combine the Top Panels (A and B) together by attaching two Butt Hinges (8) at the joint with six 15 mm Screws (6) per hinge, using the pilot holes as a guide.
6. Securely screw one Locator Pin (7) into the threaded insert on the Large Top Panel (A).



7. Attach the assembled pedestal to the Small Top Panel (B) with four 50 mm Bolts (5) as shown.

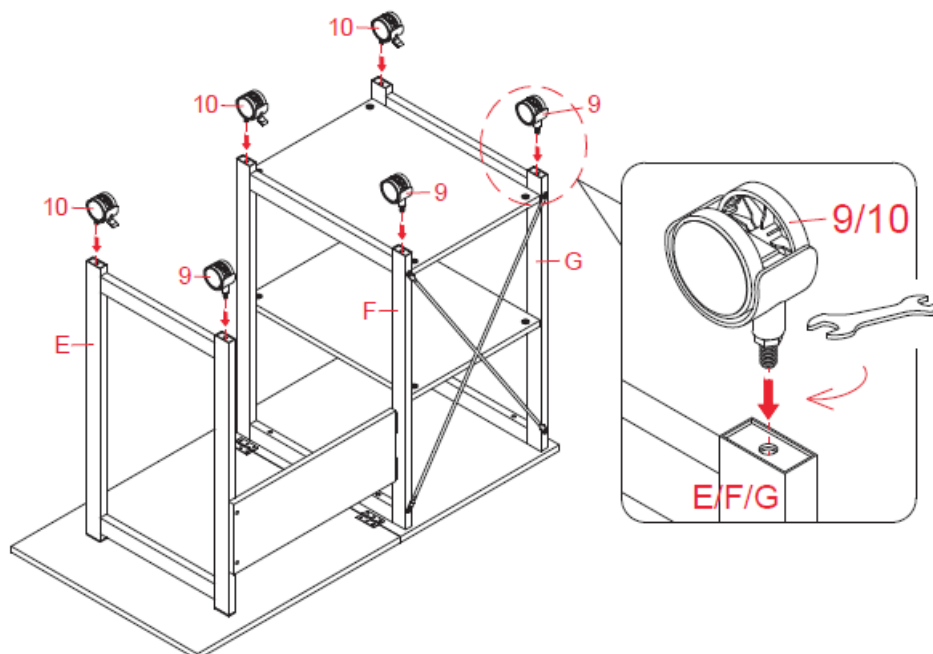


8. Attach two Metal Bars (H) to the back of the End Frames (F and G) with four 12 mm Bolts (3).

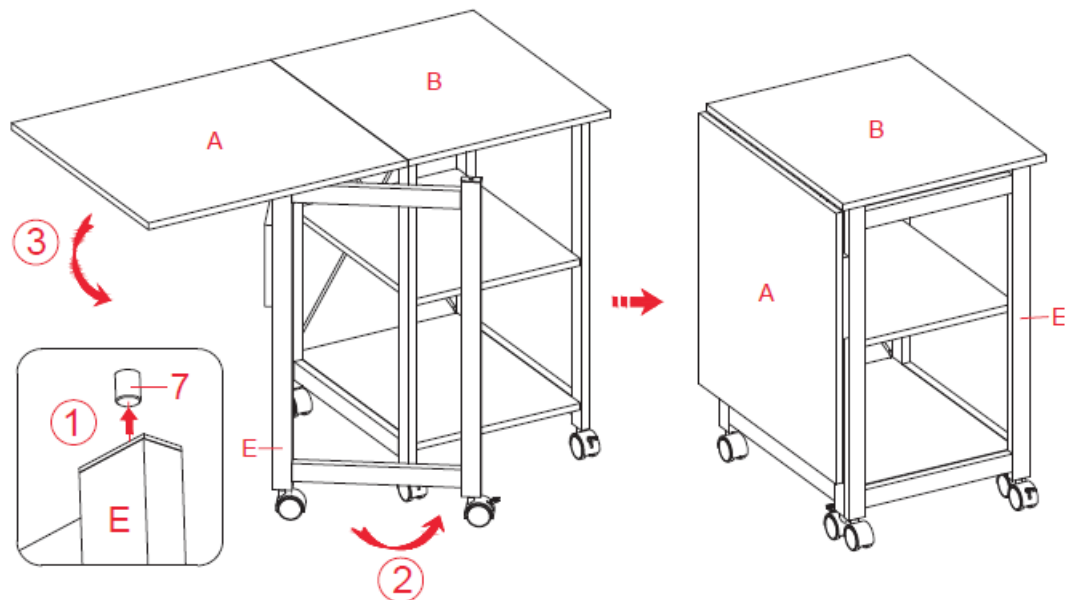


9. Using the pilot holes as a guide, attach the Back Panel (D) to the pre-attached hinges on the Middle End Frame (F) with six 15 mm Screws (6).

10. Position the front post of the Left End Frame (E) onto the Locator Pin (7) installed on the Large Top Panel (A) and attach to the Back Panel (D) with two 25 mm Bolts (4).




11. Attach three Swivel Casters (9) to the front posts and three Locking Casters (10) to the back posts of the End Frames (E, F and G). Tighten the casters in place with the provided open wrench.



12. Ask for assistance to lift the unit upright and position at the desired location.
13. You can collapse the Large Top Panel (A) to save space. To fold the desk, lift up the Large Top Panel (A) a little so that you can swing the Left End Frame (E) all the way to the front of the right pedestal, then lay down the Large Top Panel.
14. Extend the Large Top Panel (A) in reverse order as needed

Documents / Resources

	<p>COSTWAY HW67486 Folding Working Table [pdf] User Manual HW67486 Folding Working Table, HW67486, Folding Working Table, Working Table, Table</p>
---	---