


**COSTWAY®**  
**CB10516**  
**Computer Desk**



# COSTWAY CB10516 Computer Desk Instruction Manual

[Home](#) » [COSTWAY](#) » COSTWAY CB10516 Computer Desk Instruction Manual 

## Contents

- [1 COSTWAY CB10516 Computer Desk](#)
- [2 Product Specifications](#)
- [3 Product Usage Instructions](#)
- [4 Tools Required](#)
- [5 Parts](#)
- [6 Assembly Steps](#)
- [7 Return / Damage Claim Instructions](#)
- [8 Cleaning and Maintenance](#)
- [9 Frequently Asked Questions \(FAQ\)](#)
- [10 Documents / Resources](#)
  - [10.1 References](#)

**COSTWAY®**

**COSTWAY CB10516 Computer Desk**



## Product Specifications

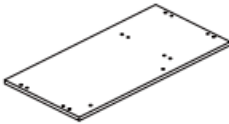
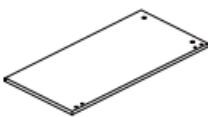
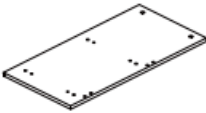
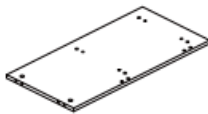




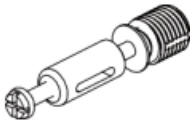


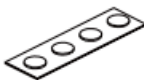

- Product Name: Computer Desk
- Model Number: CB10516
- Optional Accessory: X2

## Product Usage Instructions

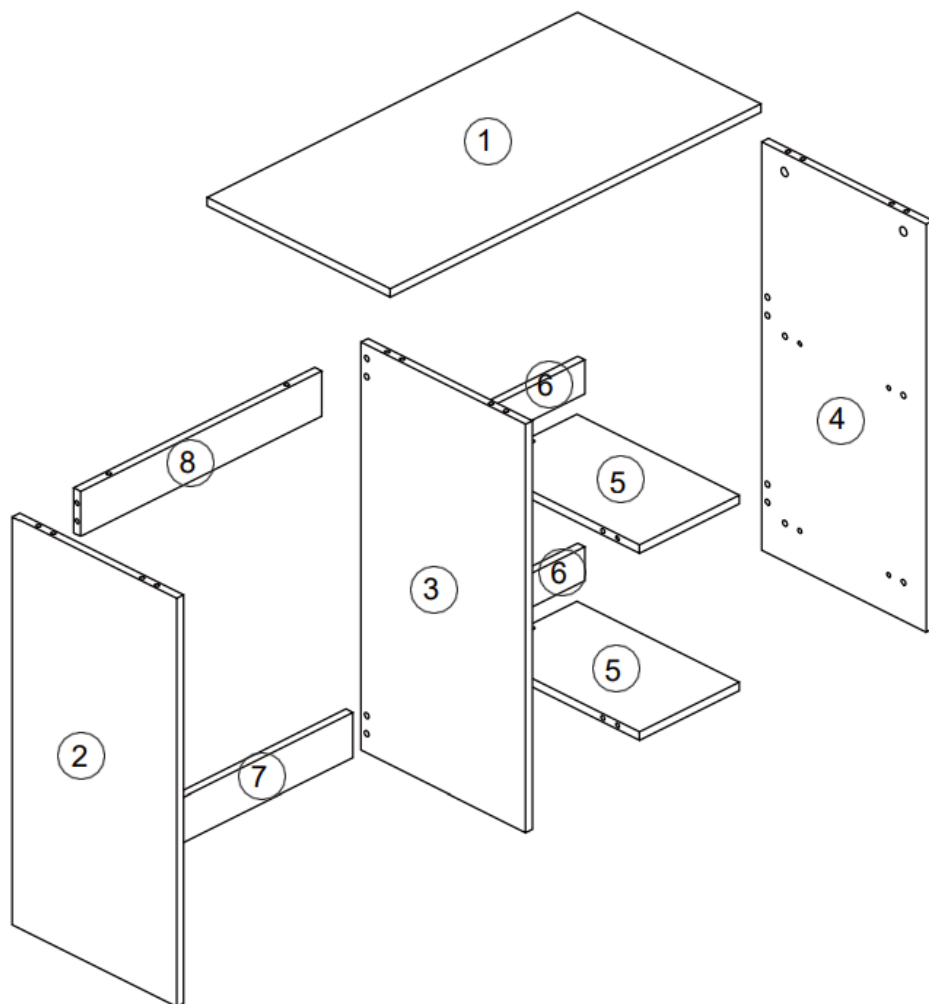
### Before You Start

Read all instructions carefully. Keep the instructions for future reference. Sort and count all parts and accessories. Follow each step carefully and in the correct order. It is recommended to assemble all components near the intended usage area to avoid unnecessary movement of the product once assembled. Always place the product on a flat, stable, and firm surface.

## Tools Required

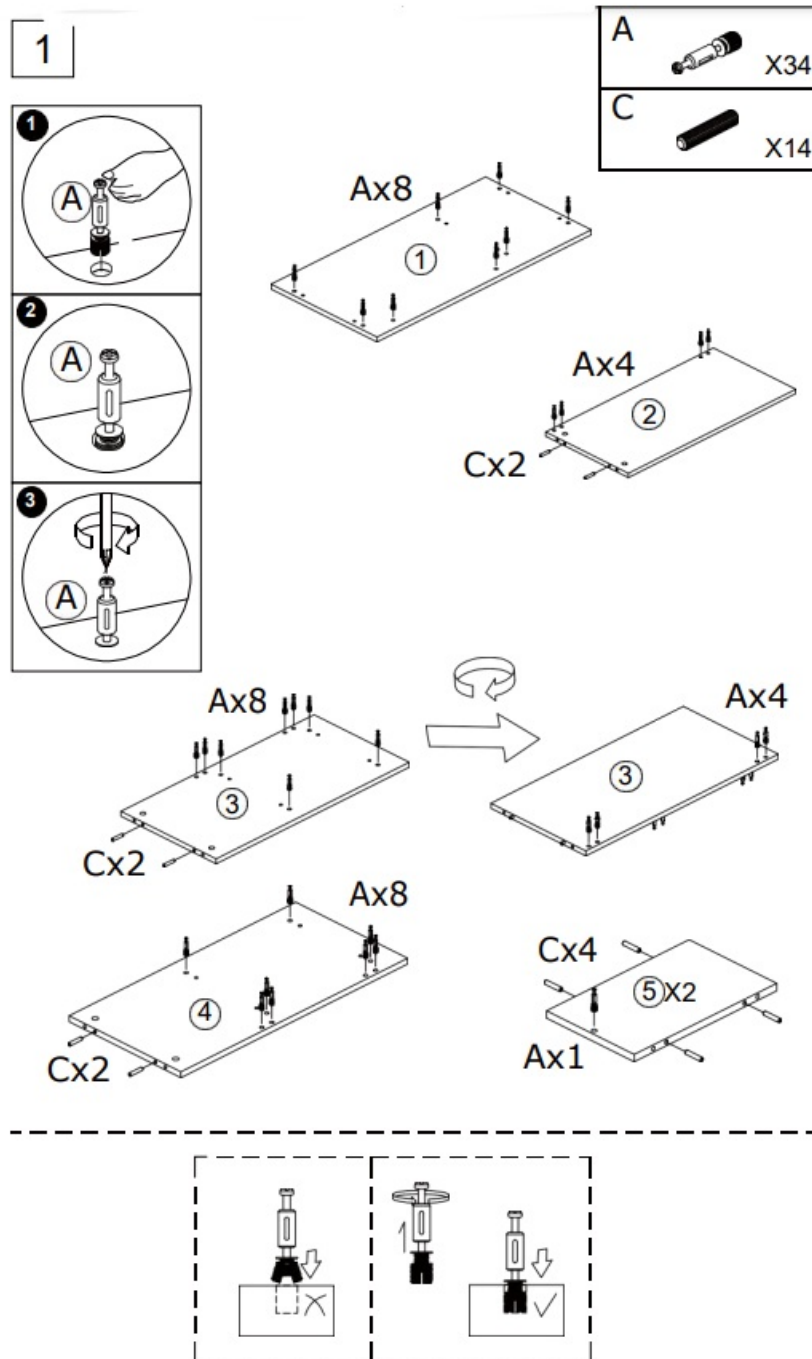
1	2	3
		
X1	X1	X1
4	5	6
		
X1	X2	X2
7	8	
		
X1	X1	
(A)	(B)	(C) 8*40mm
		
X34	X34	X14
(X)	(Z)	Optional accessory /Optionales Zubehör /Accessoire en option /Accesorio opcional /Accessorio opzionale /Akcesorium opcjonalne
		
X2	X34	

## Parts

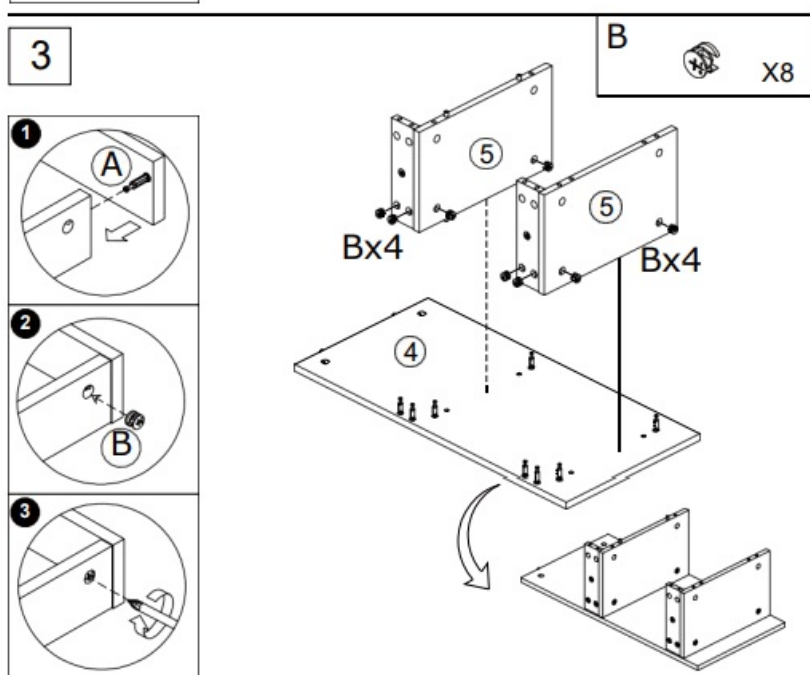
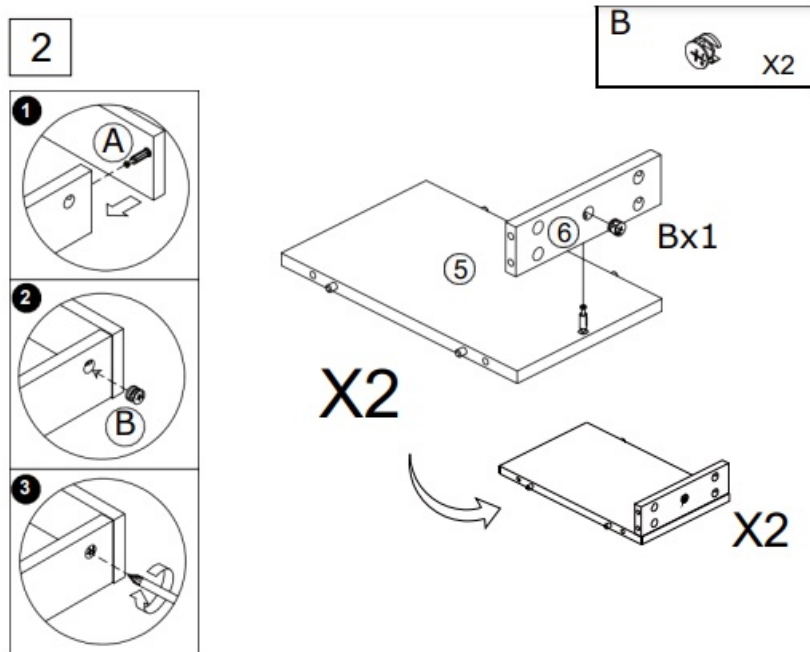


## Assembly Steps

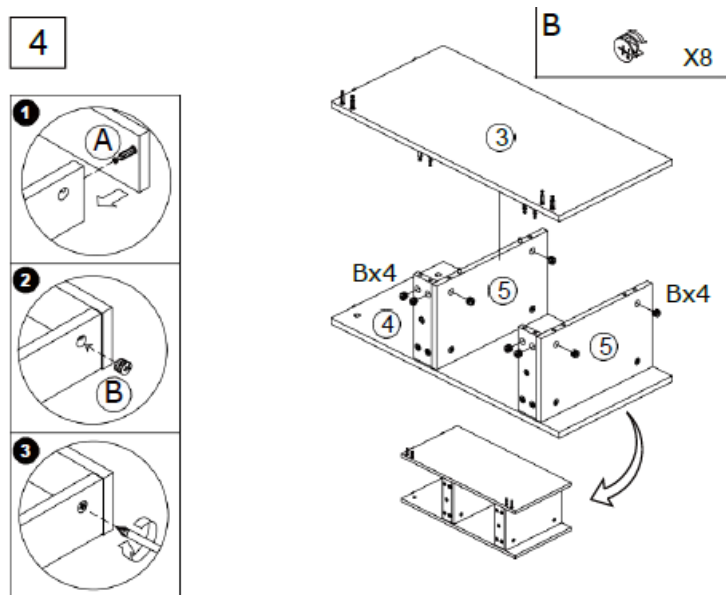
1. Identify and sort all parts and accessories.

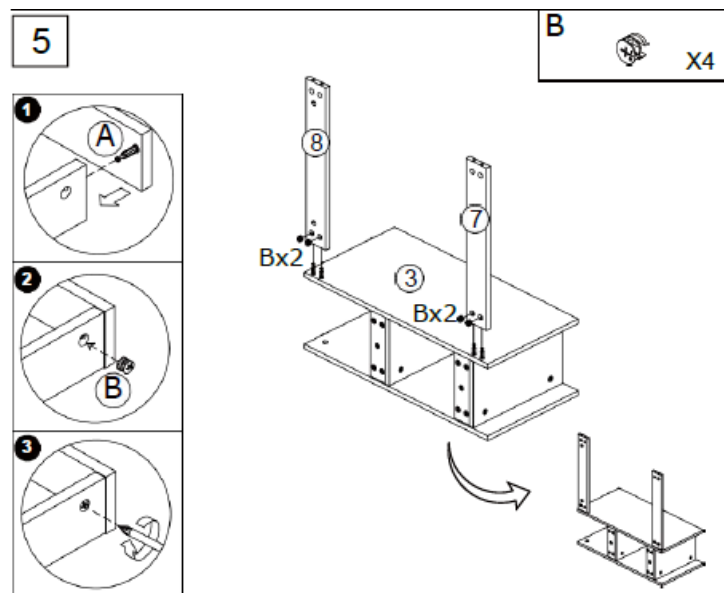


2. Follow the assembly steps in the provided manual.

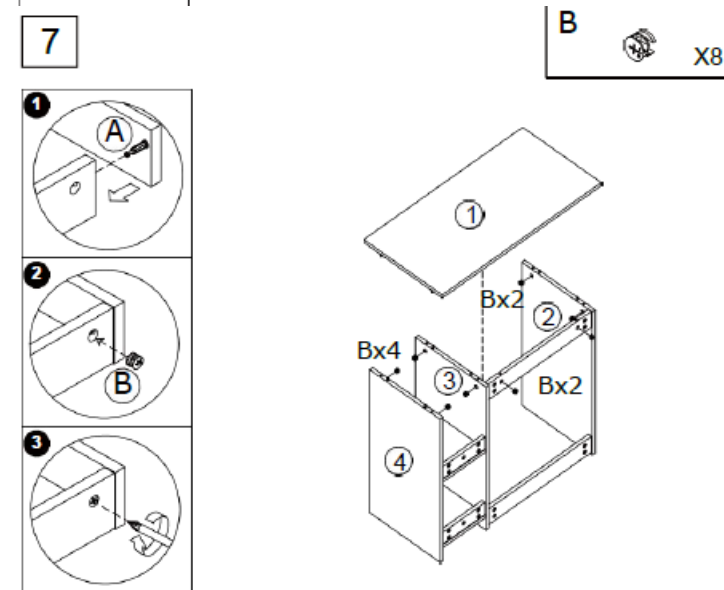
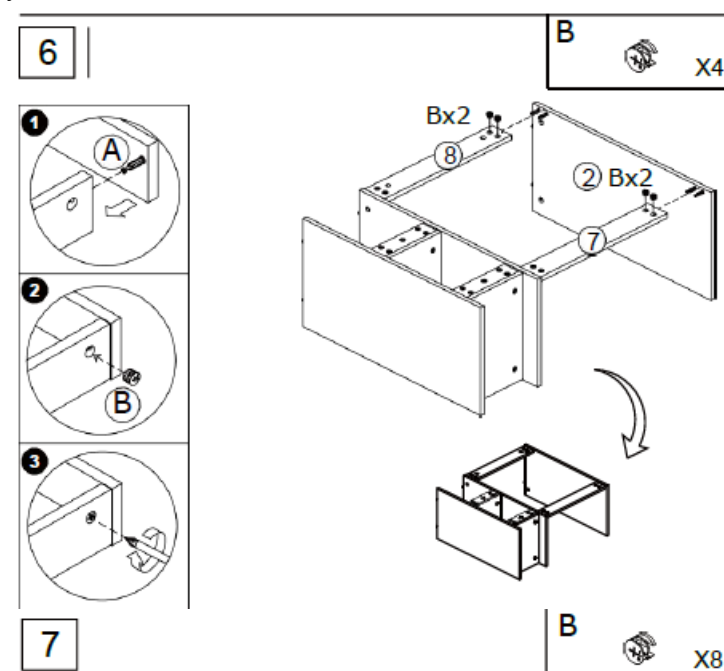


3. Ensure the product is assembled on a flat and stable surface.

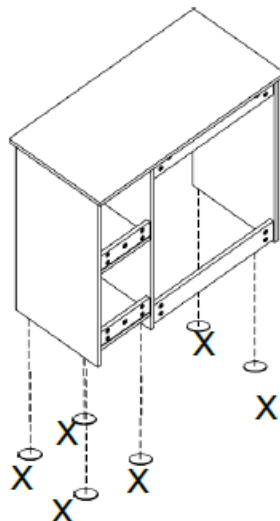





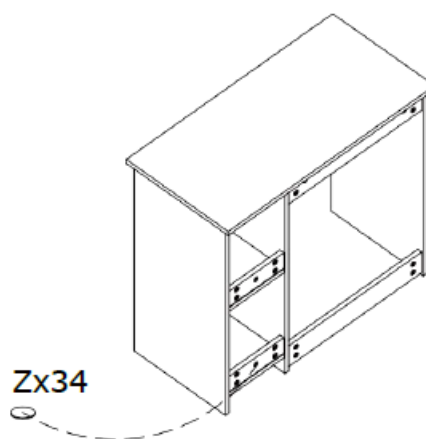
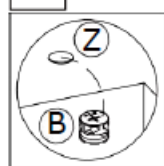
4. Attach optional accessory X2 if desired.



8

X  X2

9

Z  X34

## Return / Damage Claim Instructions

- **DO NOT discard the box / original packaging.**

In case a return is required, the item must be returned in original box. Without this your return will not be accepted.

- **Take a photo of the box markings.**

A photo of the markings (text) on the side of the box is required in case a part is needed for replacement. This helps our staff identify your product number to ensure you receive the correct parts.

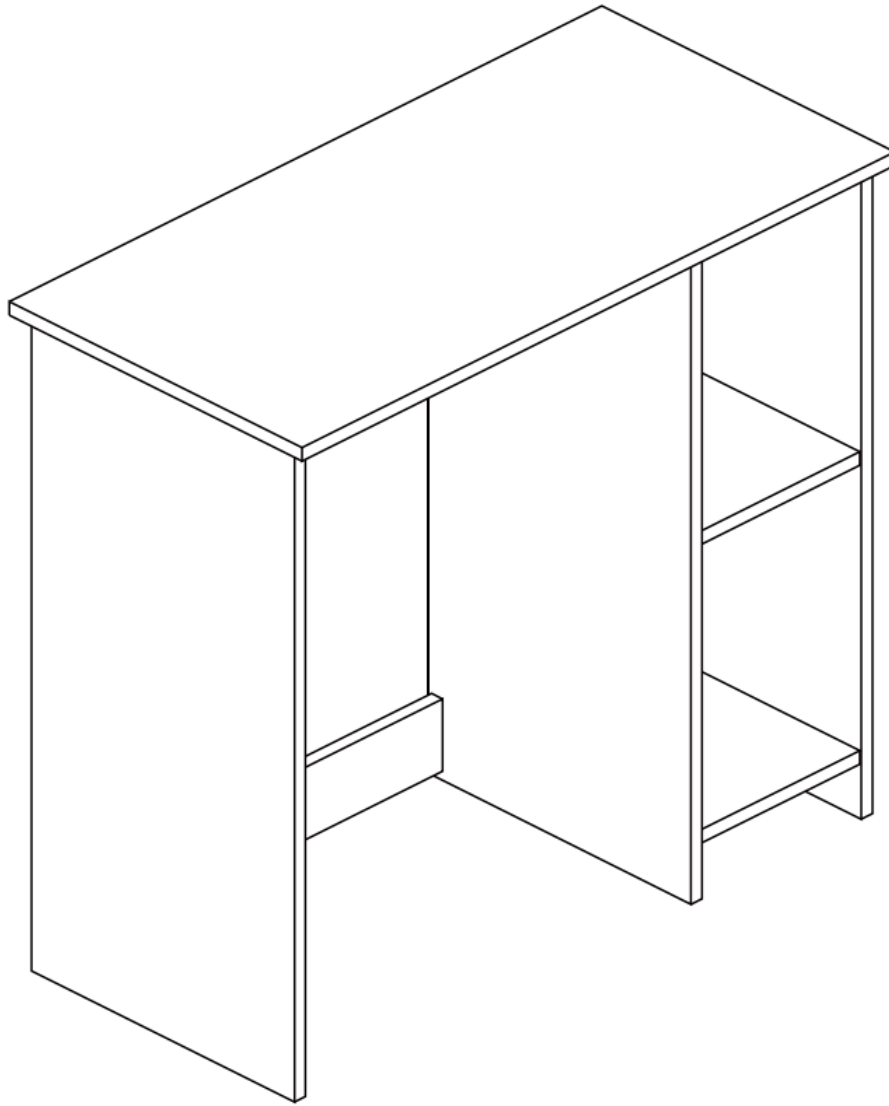
- **Take a photo of the damaged part (if applicable).**

A photo of the damage is always required to file a claim and get your replacement or refund processed quickly. Please make sure you have the box even if it is damaged.

- **Send us an email with the images requested.**

Email us directly from marketplace where your item was purchased with the attached images and a description of your claim.





## **Cleaning and Maintenance**

Regularly clean the computer desk with a soft cloth and mild detergent. Avoid using harsh chemicals that may damage the surface. Check and tighten any loose screws or fittings periodically to maintain stability.

## **Storage and Handling**

When not in use, store the computer desk in a dry and secure location to prevent damage. Avoid placing heavy objects on the desk surface to maintain its integrity.

## **Frequently Asked Questions (FAQ)**

### **How can I request a return or file a damage claim?**

To request a return or file a damage claim, do not discard the original packaging. Take photos of the box markings and the damaged part if applicable. Send an email with the images and a description of your claim to the appropriate contact based on your location.

### **How do I contact customer support for assistance?**

If you require assistance with the product, contact our customer support team via email at the respective addresses provided in the manual based on your location.

## **Documents / Resources**



[COSTWAY CB10516 Computer Desk](#) [pdf] Instruction Manual  
CB10516 Computer Desk, CB10516, Computer Desk, Desk

## References

- [User Manual](#)

### Manuals+, Privacy Policy

This website is an independent publication and is neither affiliated with nor endorsed by any of the trademark owners. The "Bluetooth®" word mark and logos are registered trademarks owned by Bluetooth SIG, Inc. The "Wi-Fi®" word mark and logos are registered trademarks owned by the Wi-Fi Alliance. Any use of these marks on this website does not imply any affiliation with or endorsement.