

Cortrium C3 Holter Device Monitoring



Cortrium C3 Holter Device Monitoring User Manual

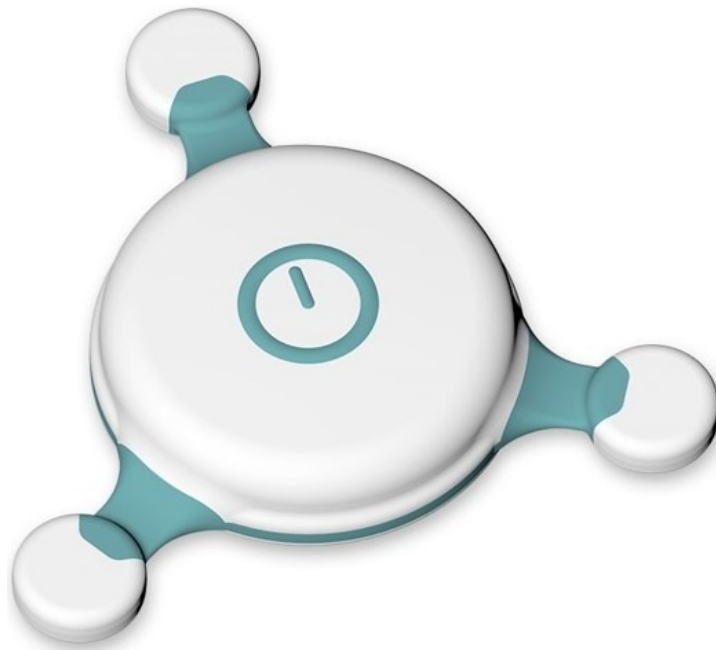
[Home](#) » [Cortrium](#) » Cortrium C3 Holter Device Monitoring User Manual 

Contents

- [1 Cortrium C3 Holter Device Monitoring](#)
- [2 Product Information](#)
- [3 Product Usage Instructions](#)
- [4 Usage Instructions](#)
- [5 Additional instructions](#)
- [6 Documents / Resources](#)
 - [6.1 References](#)
- [7 Related Posts](#)



Cortrium C3 Holter Device Monitoring



Product Information

Specifications

- **Product Name:** C3 Device
- **Waterproof:** No
- **Recording Duration:** 24-48 hours
- **Support Contact:**
 - **Telephone:** +45 4057 4771
 - **Email:** support@cortrium.com

Product Usage Instructions

Attach Electrodes to Device

- Take the electrodes and attach them to the C3 device.

Peel off Plastic from Electrodes

- Remove the plastic covering from the electrodes.

Turn on Device

- Press the power button to turn on the C3 device.

Attach the Device to the Patient

- Place the C3 device on the middle line of the patient's chest.
- **Note:** *If the patient has chest hair, shaving may be required for proper attachment.*
- The device is correctly attached and recording if you see slow green flashes.

- **Note:** The C3 will continue recording for 24-48 hours.

Additional Instructions

A. Device Notification Lights

Green Flashes:

- **Fast:** Indicates that the event button is pressed.
- **Slow:** Indicates that the C3 device is recording.

White Flashes:

Indicates that the C3 device does not have proper contact with the body.

Yellow Flashes:

- **Slow:** Indicates low battery.
- **Fast:** Indicates non-critical error.
- Please consult the manual for further information.

Blue Flashes:

Indicates a critical error. Please contact the supplier for assistance.

B. Contents of Package

- 1 Cortrium C3 unit
- 1 USB cable
- **Note:** If you experience any discomfort or symptoms, press the button.
- The button will flash green quickly for 10 seconds.

FAQ

Q: Is the C3 device waterproof?

- **A:** No, the C3 device is not waterproof.

Q: How long does the C3 device record for?

- **A:** The C3 device will keep recording for 24 to 48 hours.

Q: What should I do if the C3 device does not have proper contact with the body?

- **A:** Ensure that the device is securely attached to the patient's chest and that the electrodes are properly placed.

Q: What should I do if I see yellow flashes on the device?

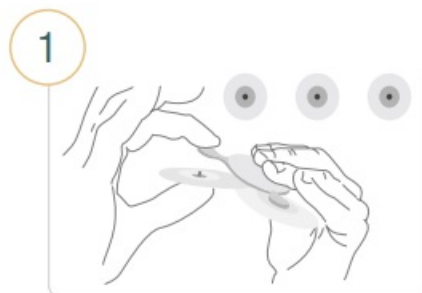
- **A:** Slow yellow flashes indicate low battery. Please charge the device.
- Fast yellow flashes indicate a non-critical error. Consult the manual for further information.

Q: What should I do if I see blue flashes on the device?

- **A:** Blue flashes indicate a critical error. Please contact the supplier for assistance.

Usage Instructions

1. Attach electrodes to device



2. Peel off plastic from electrodes

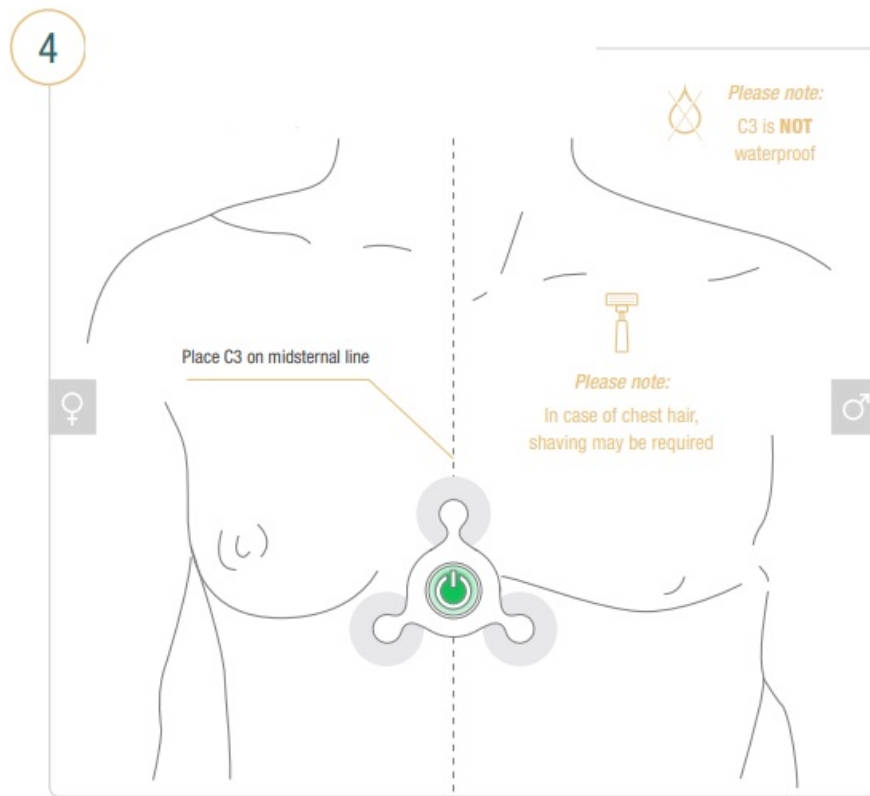


3. Turn on device



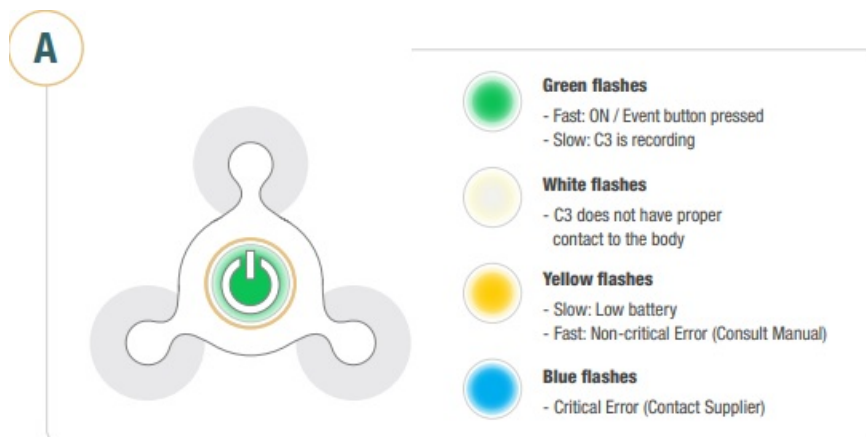
4. **Attach the device to the patient**

- Slow green flashes indicate C3 is correctly attached and recording
- The C3 will keep recording for 24h – 48h

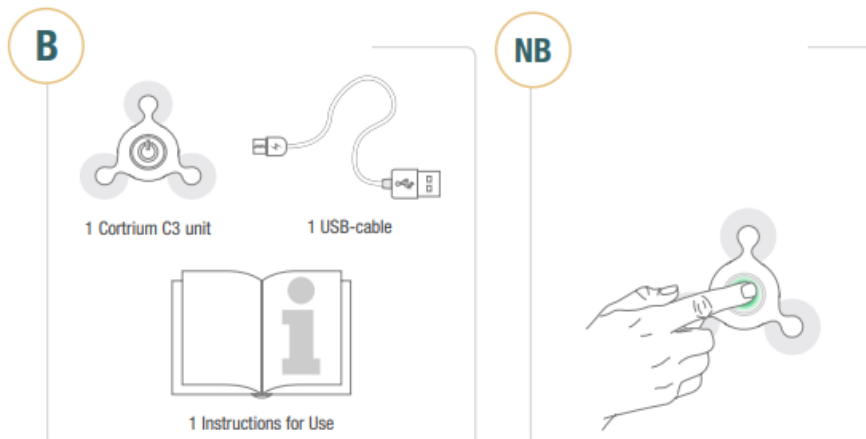


Additional instructions

Device notification lights



Contents of package

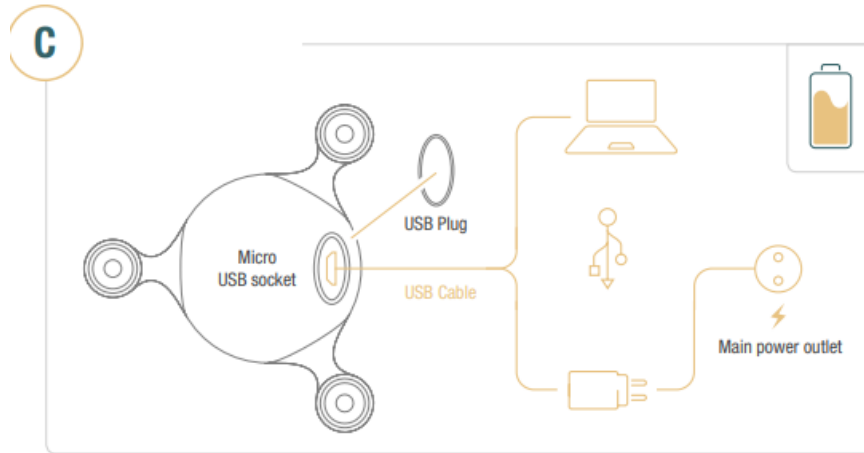


Discomfort!

- If sensing symptoms or discomfort, press the button
- The button will flash green quickly for 10 seconds.

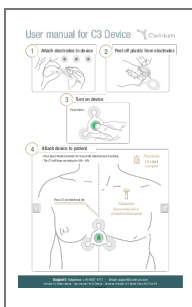
Charging the C3

Showing: The back of the C3 device



- **Support: Telephone:** +45 4057 4771 | Email: support@cortrium.com
- **Cortrium C3 Holter device** – User manual for C3 Device
- **Document Version:** 0.3 Danish Date: 2017-04-05

Documents / Resources



[Cortrium C3 Holter Device Monitoring](#) [pdf] User Manual
C3 Holter Device Monitoring, C3, Holter Device Monitoring, Device Monitoring, Monitoring

References

-  [Manual-Hub.com – Free PDF manuals!](#)
- [User Manual](#)

[Manuals+.](#) [Privacy Policy](#)

This website is an independent publication and is neither affiliated with nor endorsed by any of the trademark owners. The "Bluetooth®" word mark and logos are registered trademarks owned by Bluetooth SIG, Inc. The "Wi-Fi®" word mark and logos are registered trademarks owned by the Wi-Fi Alliance. Any use of these marks on this website does not imply any affiliation with or endorsement.