



## CORTEX SR-1 Squat Rack User Manual

[Home](#) » [CORTEX](#) » CORTEX SR-1 Squat Rack User Manual 

CORTEX SR-1 Squat Rack User Manual

# **CORTEX<sup>®</sup>**

## **SR-1 SQUAT RACK**

### **USER MANUAL**



Product may vary slightly from the item pictured due to model upgrades.



**Read all instructions carefully before using this product.  
Retain this owner's manual for future reference.**

**NOTE:**

This manual should not be used to guide your purchasing decision. Your product, and the contents inside its carton, may vary from what is listed in this manual. This manual may also be subject to updates or changes. Updated manuals are available through our website at [www.lifespanfitness.com.au](http://www.lifespanfitness.com.au)

## Contents

### 1 IMPORTANT SAFETY INSTRUCTIONS

#### 1.1 CARE INSTRUCTIONS

### 2 PARTS LIST

### 3 ASSEMBLY INSTRUCTIONS

### 4 EXERCISE GUIDE

#### 4.1 WARM UP

#### 4.2 COOL DOWN

#### 4.3 WORKOUT GUIDELINES

### 5 WARRANTY

#### 5.1 AUSTRALIAN CONSUMER LAW

#### 5.2 WARRANTY AND SUPPORT

### 6 Documents / Resources

#### 6.1 References

### 7 Related Posts

## IMPORTANT SAFETY INSTRUCTIONS



**WARNING:** Read all instructions before using this machine.

Please take caution when re-racking your weights. Re-racking with excess forward momentum may cause the rack to topple over

Please keep this manual with you at all times.

- It is important to read this entire manual before assembling and using the equipment. Safe and effective use can only be achieved if the equipment is assembled, maintained and used properly.  
Please note: It is your responsibility to ensure that all users of the equipment are informed of all warnings and precautions.
- Before starting any exercise program you should consult your doctor to determine if you have any medical or physical conditions that could put your health and safety at risk, or prevent you from using the equipment properly. Your doctor's advice is essential if you are taking medication that affects your heart rate, blood pressure or cholesterol level.
- Be aware of your body's signals. Incorrect or excessive exercise can damage your health. Stop exercising if you experience any of the following symptoms: pain, tightness in your chest, irregular heartbeat, and extreme shortness of breath, lightheadedness, dizziness or feelings of nausea. If you do experience any of these symptoms, you should consult your doctor before continuing with your exercise program.
- Keep children and pets away from the equipment. This equipment is designed for adult use only.
- Use the equipment on a solid, flat level surface with a protective cover for your floor or carpet. To ensure safety, the equipment should have at least 2 meters of free space around it.
- Before using the equipment, check that the nuts and bolts are securely tightened. If you hear any unusual noises coming from the equipment during use and assembly, stop immediately. Do not use the equipment until the problem has been rectified.
- Wear suitable clothing while using the equipment. Avoid wearing loose clothing that may get caught in the equipment or that may restrict or prevent movement.

- This equipment is designed for indoor and family use only.
- Care must be taken when lifting or moving the equipment so as not to injure your back.
- Always keep this instruction manual and assembly tools at hand for reference.
- The equipment is not suitable for therapeutic use.

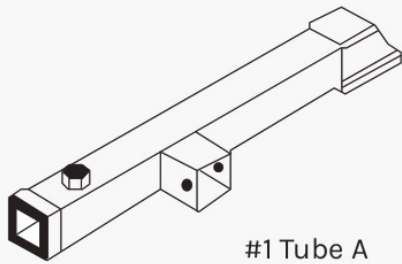
## CARE INSTRUCTIONS



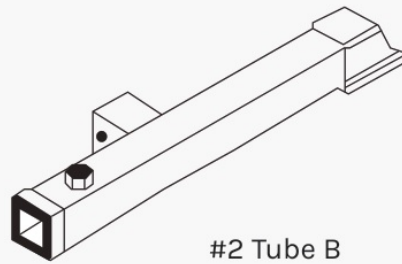
### WARNING: IMPORTANT

- Where necessary, lubricate any moving joints with silicon spray after periods of usage.
- Be careful not to damage plastic or metal parts of the machine with heavy or sharp objects.
- The machine can be kept clean by wiping it down using dry cloth.
- Regularly check all moving parts and make sure there are signs of wear and damage, if any the use of the device must be stopped immediately and contact our after-sales department.
- During inspection, it is necessary to make sure that all bolts and nuts are completely fixed. If any bolt or nut connection is loosened, please re-tighten.
- Check weld for cracks.
- Failure to perform daily maintenance may result in personal injury or equipment damage.

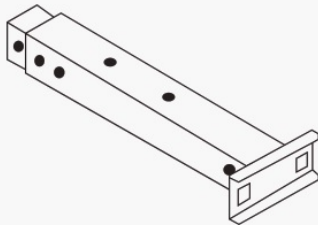
## PARTS LIST



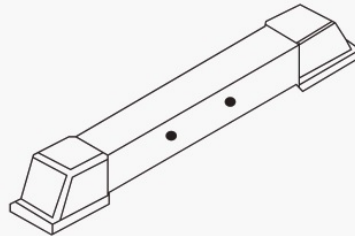
#1 Tube A



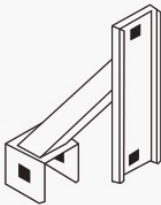
#2 Tube B



#3 Connecting Tube



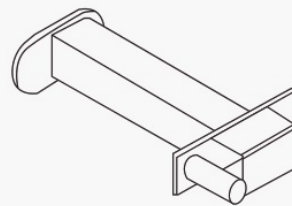
#4 Supporting Tube



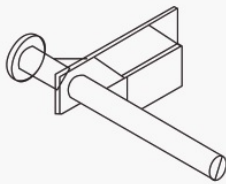
#5 Inclined Supporting Tube



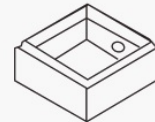
#6 Knob



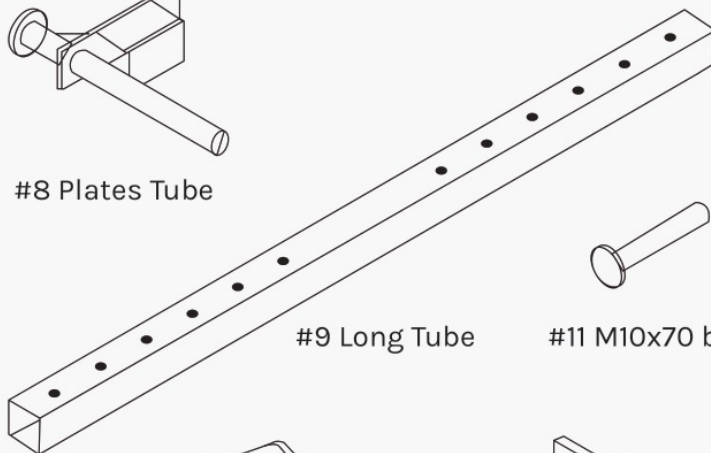
#7 Adjustable Tube



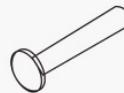
#8 Plates Tube



#10 50to45 Bushing



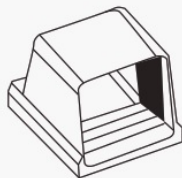
#9 Long Tube



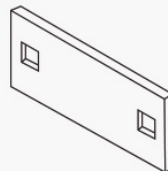
#11 M10x70 bolt



#12 ø10 washer



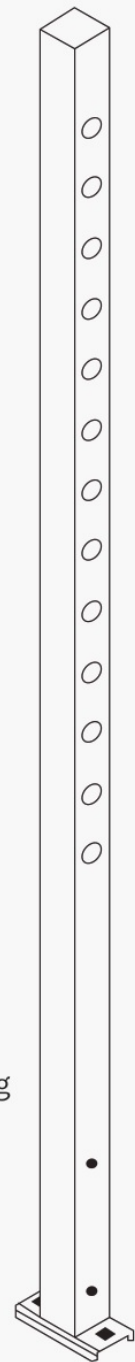
#14 Foot Strap



#15 Connector



#16 M10 nut

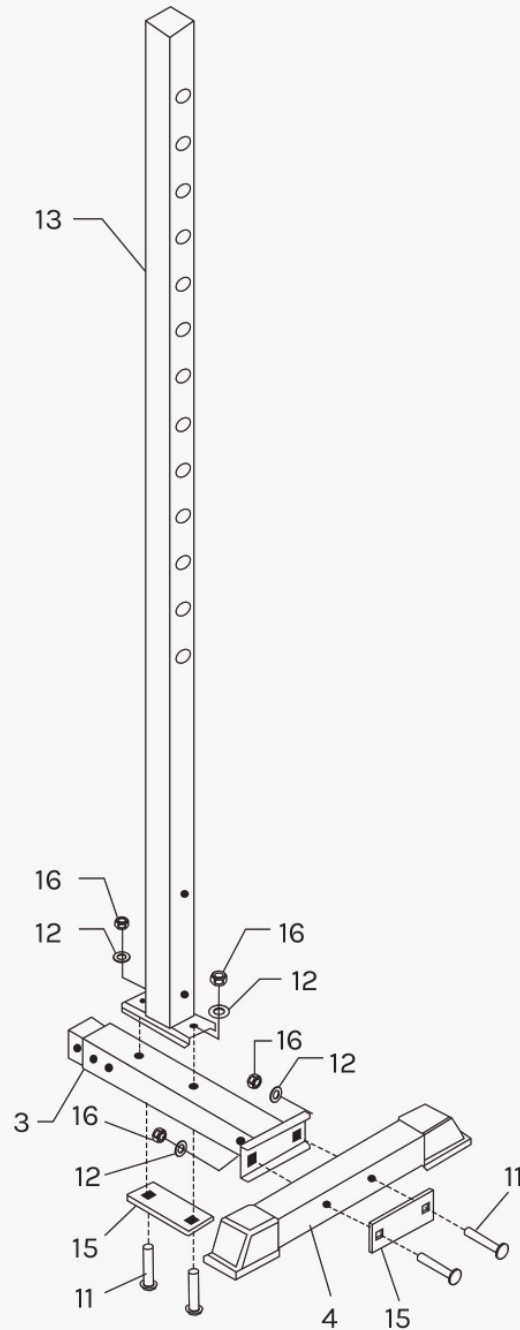


#13 Upright Tube

Part No.	Name	Model	Quantity
1	Tube A		1
2	Tube B		1
3	Connecting tube		2
4	Supporting tube		2
5	Incline supporting tube		4
6	Knob		2
7	Adjustable tube		2
8	Plates tube		2
9	Long tube		1
10	Bushing	50*45	2
11	M10*70 bolt	M10x70	16
12	Washer	Φ10	16
13	Upright tube		2
14	Foot strap		6
15	Connector		4
16	Nut		16

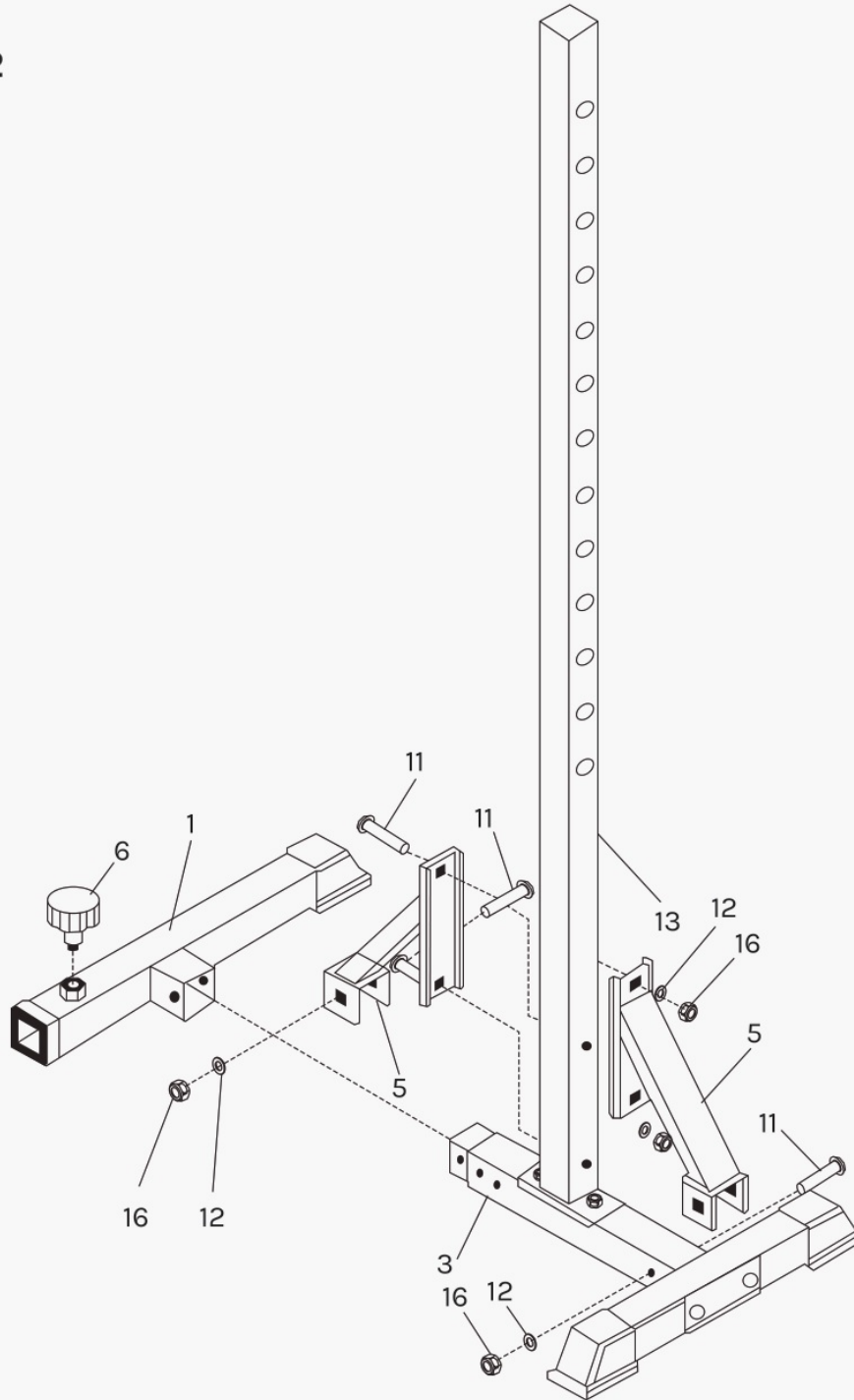
## ASSEMBLY INSTRUCTIONS

## STEP 1



1. Secure the tube (#3) to the tube (#4) with one connector (#15), two carriage bolts M10x70 (#11), two washers  $\Phi 10$  (#12) and two M10 nuts (#16).
2. Attach the tube (#13) to the tube (#3), using carriage bolt M10x70 (#11), washer  $\Phi 10$  (#12) and nut M10 (#16).

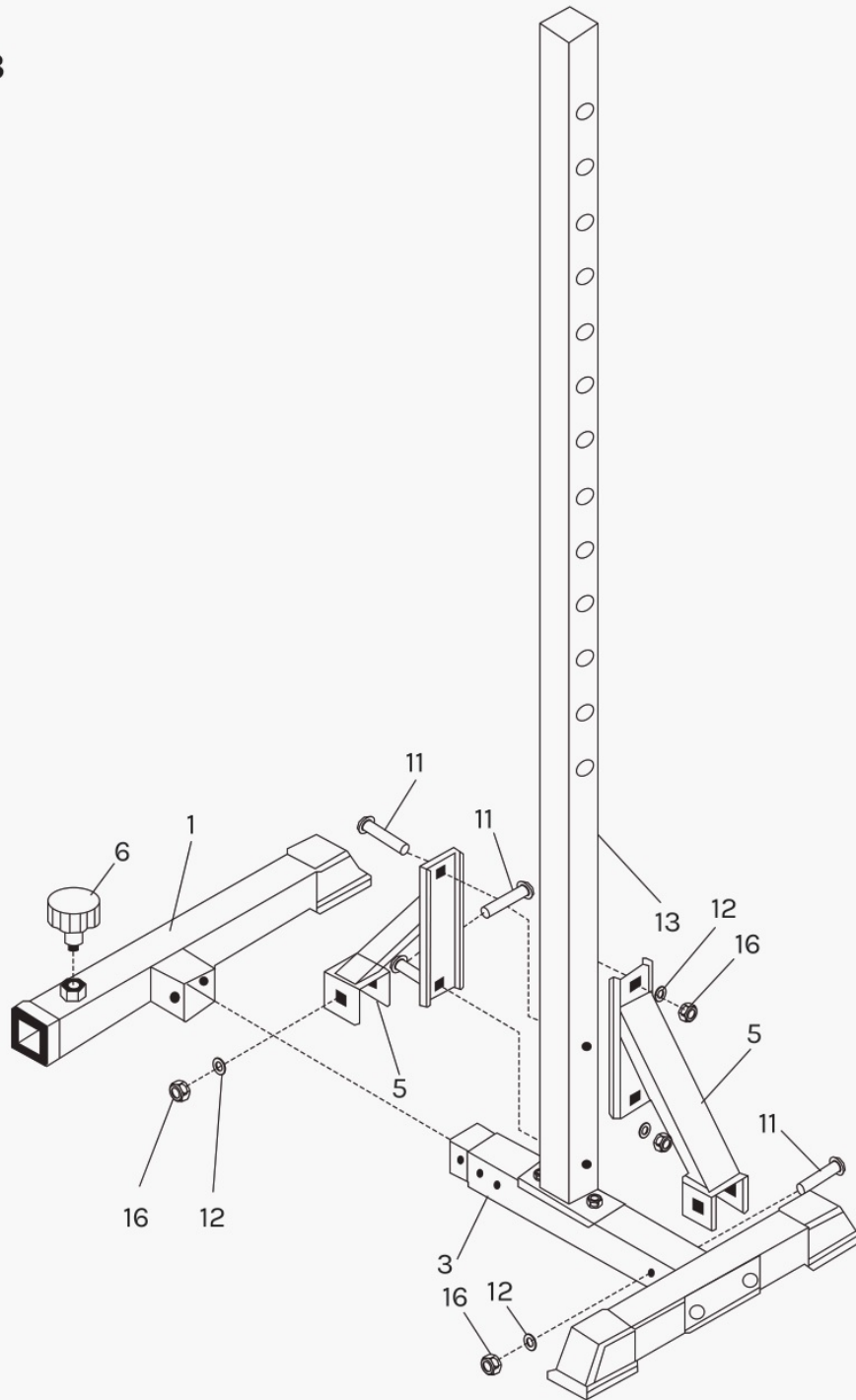
## STEP 2



1. Attach tube A (#1) to tube (#3), and connect the two incline tubes (#5) to tubes (#1), (#3) and (#13).
2. Secure with carriage bolt M10x70 (#11),  $\Phi$ 10washer (#12) and M10 nut (#16).

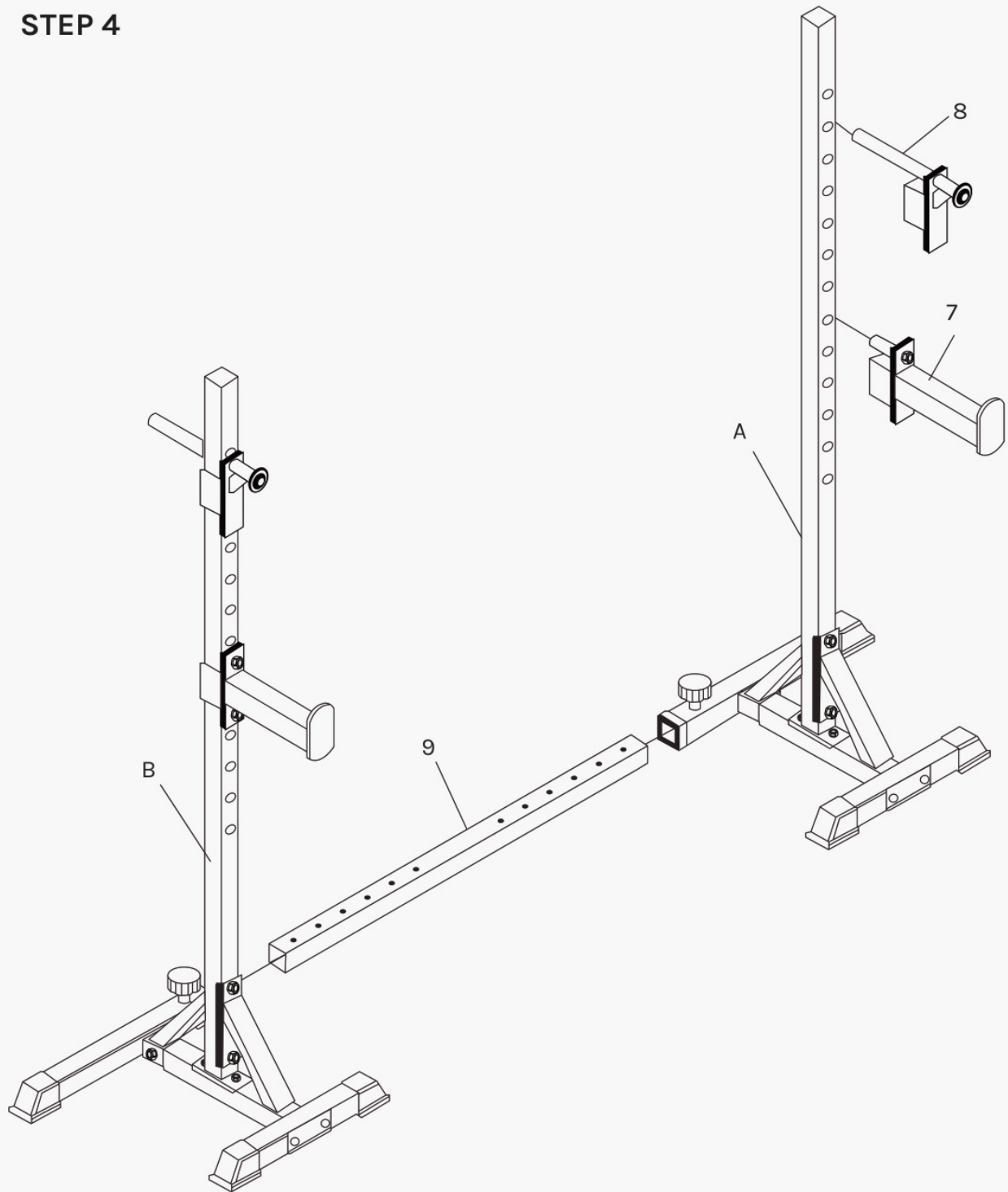


### STEP 3



1. Attach tube B (#2) to tube (#3), and connect the two incline tubes (#5) to tubes (#1), (#3) and (#13).
2. Secure with carriage bolt M10x70 (#11),  $\Phi 10$  washer (#12) and M10 nut (#16).

## STEP 4



1. Connect part A with part B through the long tube (#9).
2. Put the (#7) and (#8) to the holes like following picture.

## EXERCISE GUIDE



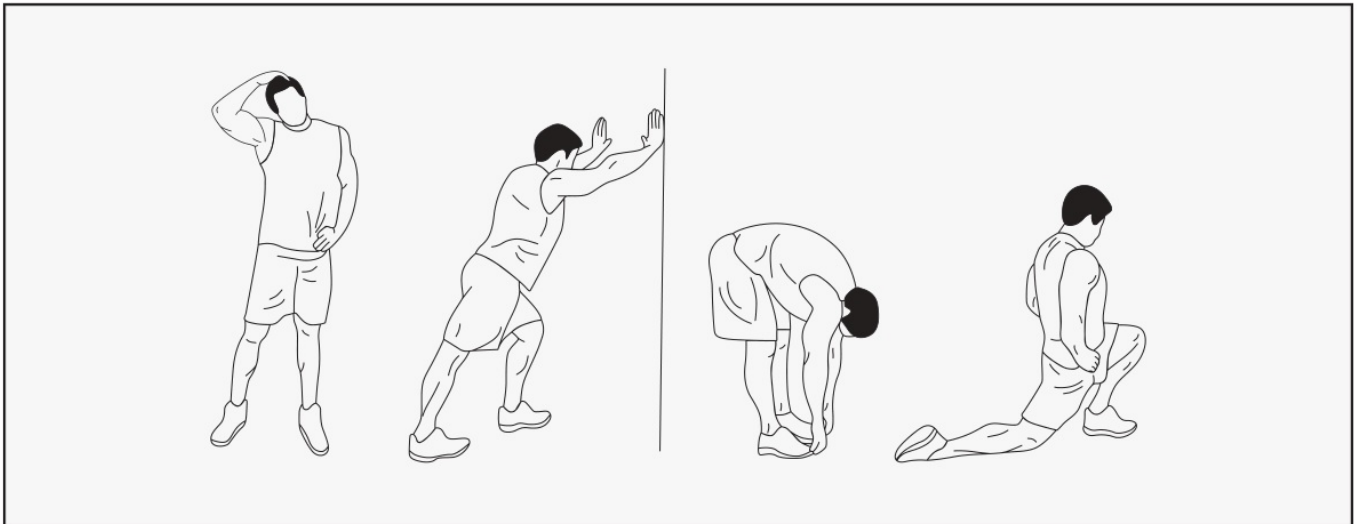
### PLEASE NOTE:

Before beginning any exercise program, consult your physician. This is important especially if you are over the

age of 45 or individuals with pre-existing health problems.

The pulse sensors are not medical devices. Various factors, including the user's movement, may affect the accuracy of heart rate readings. The pulse sensors are intended only as an exercise aid in determining heart rate trends in general.

Exercising is great way to control your weight, improving your fitness and reduce the effect of aging and stress. The key to success is to make exercise a regular and enjoyable part of your everyday life. The condition of your heart and lungs and how efficient they are in delivering oxygen via your blood to your muscles is an important factor to your fitness. Your muscles use this oxygen to provide enough energy for daily activity. This is called aerobic activity. When you are fit, your heart will not have to work so hard. It will pump a lot fewer times per minute, reducing the wear and tear of your heart. So as you can see, the fitter you are, the healthier and greater you will feel.



## **WARM UP**

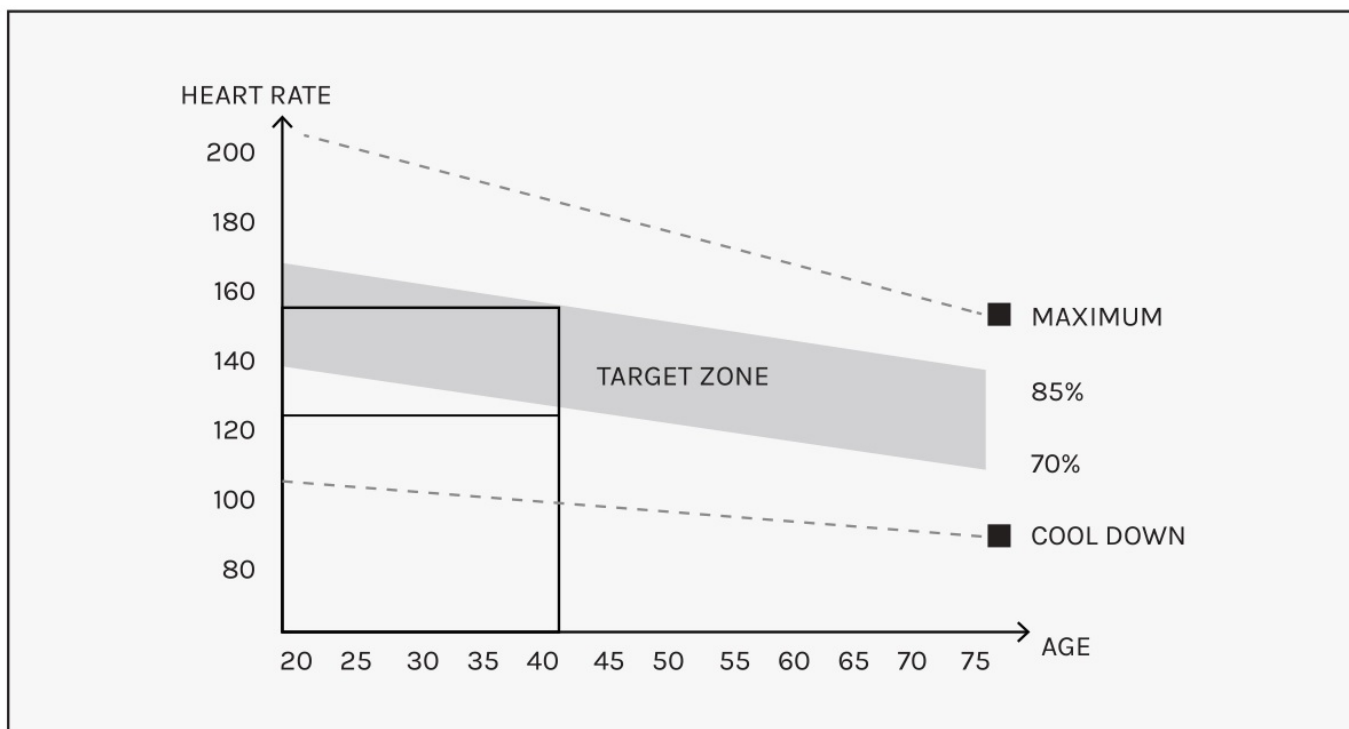
Start each workout with 5 to 10 minutes of stretching and some light exercises. A proper warm-up increases your body temperature, heart rate and circulation in preparation for exercise. Ease into your exercise.

After warming up, increase the intensity to your desired exercise program. Be sure to maintain your intensity for maximum performance. Breathe regularly and deeply as you exercise.

## **COOL DOWN**

Finish each workout with a light jog or walk for at least 1 minute. Then complete 5 to 10 minutes of stretching to cool down. This will increase the flexibility of your muscles and will help prevent post exercise problems.

## **WORKOUT GUIDELINES**



This is how your pulse should behave during general fitness exercise. Remember to warm up and cool down for a few minutes.

## WARRANTY

### AUSTRALIAN CONSUMER LAW

Many of our products come with a guarantee or warranty from the manufacturer. In addition, they come with guarantees that cannot be excluded under the Australian Consumer Law. You are entitled to a replacement or refund for a major failure and compensation for any other reasonably foreseeable loss or damage. You are entitled to have the goods repaired or replaced if the goods fail to be of acceptable quality and the failure does not amount to a major failure. Full details of your consumer rights may be found at [www.consumerlaw.gov.au](http://www.consumerlaw.gov.au)

Please visit our website to view our full warranty terms and conditions:  
<http://www.lifespanfitness.com.au/warranty-repairs>

### WARRANTY AND SUPPORT

Any claim against this warranty must be made through your original place of purchase. Proof of purchase is required before a warranty claim may be processed.

If you have purchased this product from the Official Lifespan Fitness website, please visit <https://lifespanfitness.com.au/warranty-form>

For support outside of warranty, if you wish to purchase replacement parts or request a repair or service, please visit <https://lifespanfitness.com.au/warranty-form> and fill in our [Repair/Service Request Form](#) or [Parts Purchase Form](#).

Scan this QR code with your device to go to [lifespanfitness.com.au/warranty-form](https://lifespanfitness.com.au/warranty-form)




<https://www.lifespanfitness.com.au/pages/product-support-form>



[www.lifespanfitness.com.au](http://www.lifespanfitness.com.au)

## Documents / Resources

	<p><a href="#">CORTEX SR-1 Squat Rack</a> [pdf] User Manual SR-1 SQUAT RACK</p>
---	---

## References

-  [Fitness Equipment for Home & Work | LifeSpan Fitness](#)
-  [Product Support Forms – Lifespan Fitness](#)
-  [Home | Consumer Law](#)
-  [Lifespan Fitness | Treadmills, Cardio and Strength Equipment](#)
-  [Warranty & Repairs - Gym Equipment – Lifespan Fitness](#)
-  [Product Support Forms – Lifespan Fitness](#)