



## CORSTON Switches and Sockets Instructions

[Home](#) » [CORSTON](#) » CORSTON Switches and Sockets Instructions 

### Contents

- [1 CORSTON Switches and Sockets Instructions](#)
- [2 Product Information](#)
- [3 Product Usage Instructions](#)
- [4 Switch Fitting Instructions](#)
- [5 Socket Fitting Instructions](#)
- [6 Wiring Diagrams](#)
- [7 Read More About This Manual & Download PDF:](#)
- [8 Documents / Resources](#)
  - [8.1 References](#)

### CORSTON Switches and Sockets Instructions



## Product Information

### Specifications

- **Product Types:** Switches, Sockets & Modular Units, Slimline
- **Power Supply:** Requires electrical connection
- **Installation:** Must be done by building regulations
- **Compatibility:** Various types of mounting boxes

## Product Usage Instructions

### Switch Fitting Instructions

- **Isolation:** Turn off power at the consumer unit circuit breaker.
- **Toggle Switches:** Use the provided toggle ring tool to unscrew the metal toggle ring.
- **Dimmer Switches:** Remove the dimmer knob, unscrew the ring, and align the flat edge of the dimmer stalk when reassembling.
- **Clear Switches:** Remove plastic backing, cover template, and place behind perspex before installation.

### Before Fitting

- Avoid fitting on wet plaster or paint. Ensure the wall surface is finished. Use a suitable mounting box.

### Socket Fitting Instructions

- **Socket Installation:** Screw silver chassis into the mounting box until flush with the wall. Ensure the correct level for front plate tension.
- **Clear Sockets & Modular Units:** Remove paper, cover with wallpaper or paint, and place behind perspex.

### Slimline Fitting Instructions

- **Custom Back Box:** Be careful when cutting holes due to the small distance between the backbox and the front plate.
- **Finishing the Wall:** Refinish walls after installation. Not compatible with digital dimmers.
- **Professional Installation:** Use a qualified plasterer for fitting due to the small distance between the back box and the front plate.

### Wiring Diagrams

**Connection:** Follow diagrams for correct wiring. Ensure no exposed wire, secure connections, and use earth sheathing.

### Switch Fitting Instructions

- Isolate the power supply at the consumer unit circuit breaker. Verify that the power is off.

- These products must be installed under the latest building regulations. If in any doubt, please contact a qualified electrician.

### **Toggle Switches**

- Use the toggle ring tool provided to unscrew the retaining metal toggle ring.

### **Dimmer Switches**

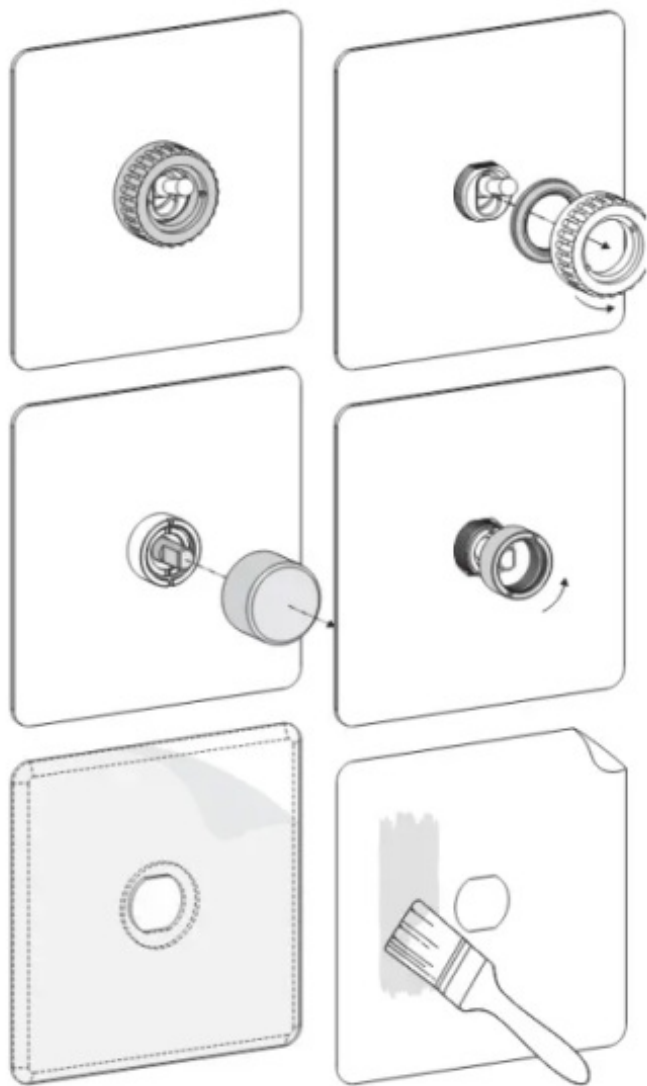
- Pull the dimmer knob off and unscrew the ring by hand or gently with a screwdriver.
- When reassembling, align the flat edge of the dimmer stalk with the knob.

### **Clear Switches**

- Remove the plastic backing from the plate.
- Cover the paper template with wallpaper or two coats of paint.
- Place behind perspex before installation.

### **Before Fitting**

- Avoid fitting electrical fittings to wet plaster or paint. For best results, the wall surface around the mounting box should be fully finished and in excellent condition.
- Ensure that the mounting box type is suitable for the electrical components and that the mounting lugs are in the correct position for the fitting.
- The mounting box should be flush to the wall, without a flange or lip. A 35mm or 45mm deep mounting box is recommended. 45mm boxes are available on our website.

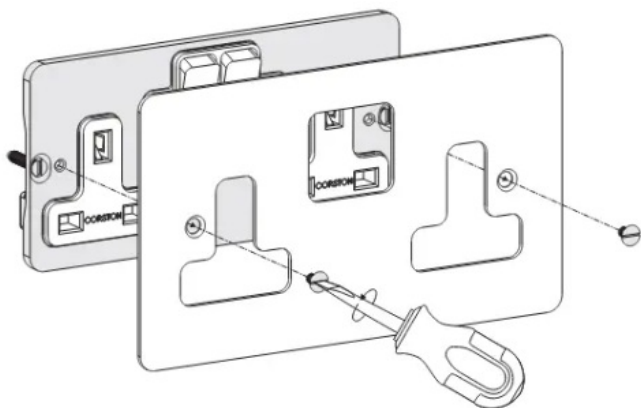


## Socket Fitting Instructions

- Isolate the power supply at the consumer unit circuit breaker. Verify that the power is off.
- These products must be installed under the latest building regulations. If in any doubt, please contact a qualified electrician.

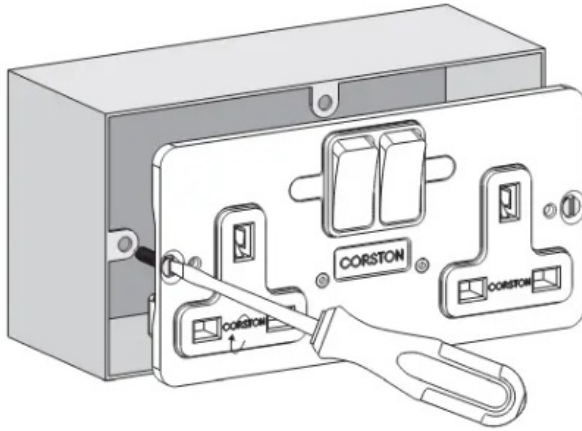
## Sockets & Modular Units

- Unscrew the front plate and remove the paper for clear versions.



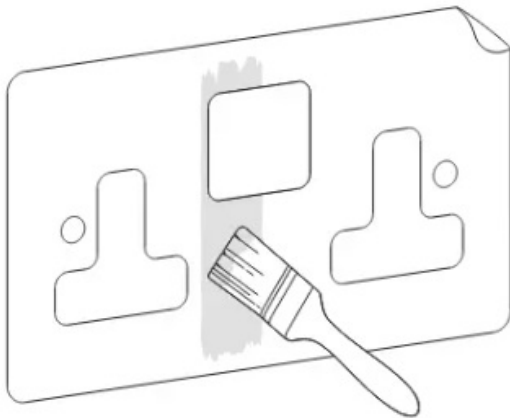
## Socket Installation

- Screw the silver chassis into the mounting box until it is flush with the wall.
- It is important to get the level correct so that the front plate creates the correct tension with the wall when it is fitted.



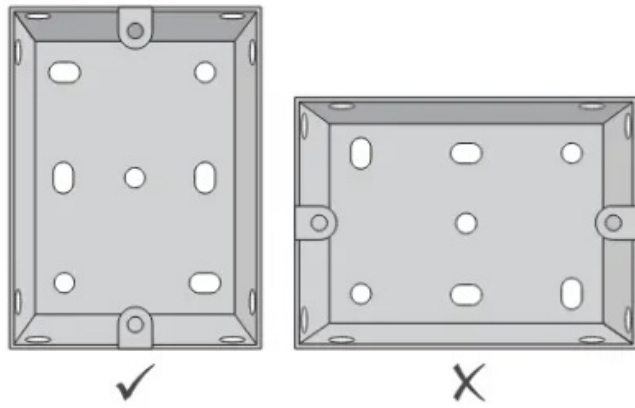
## Clear Sockets & Modular Units

- Remove the paper from behind the plate and cover it with wallpaper or two coats of paint.
- Place behind perspex before installation.



## Slimline Fitting Instructions

- Isolate the power supply at the consumer unit circuit breaker. Verify that the power is off.
- These products must be installed under the latest building regulations.
- If in any doubt, please contact a qualified electrician.



### Custom Back Box

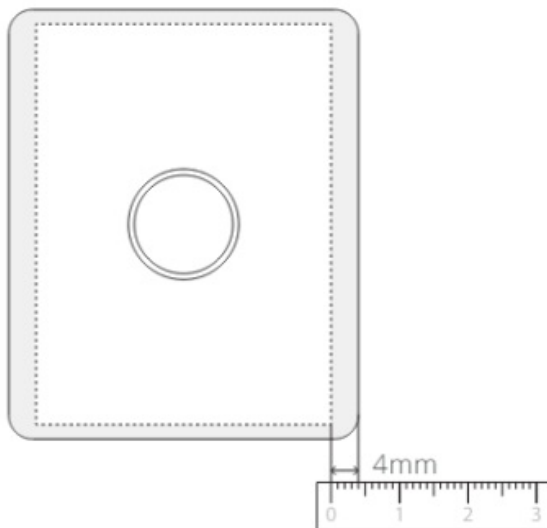
- The Slimline range has a very small distance between the edge of the backbox and the edge of the front plate. Extra care must be taken when cutting the hole for the back box

### Finishing the Wall

- Walls will need to be refinished after installing the Slimline back box.
- Digital dimmers are not compatible with the Slimline range.

### Professional Installation

- We recommend that you use a qualified plasterer to fit the back box due to the small distance between the edge of the back box and the edge of the front plate.

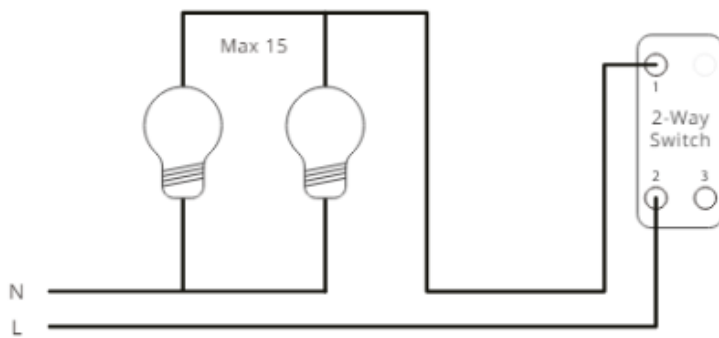


### Wiring Diagrams

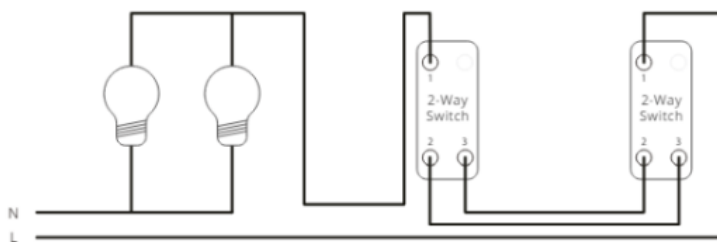
- Isolate the power supply at the consumer unit circuit breaker. Verify that the power is off. These products must be installed under the latest building regulations. If in any doubt, please contact a qualified electrician.
- Connect the wiring as shown in the diagrams below for each type of installation. When finished, there should be no exposed wire.
- The connections should be secure and tight. Earth sheathing should be used on any exposed earth wire.

- The switch assembly should push back into the mounting box without forcing or trapping any wires.

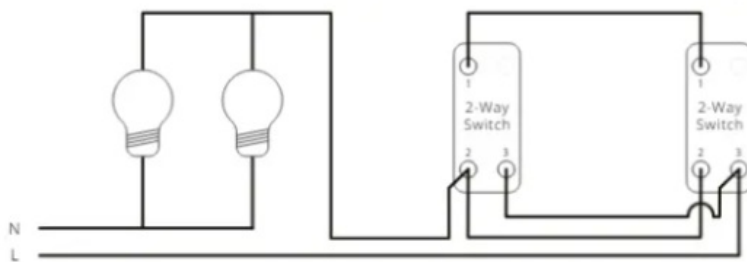
## 1. Way Wiring Diagram



## 2. Way Wiring Diagrams



## 3. Example 2



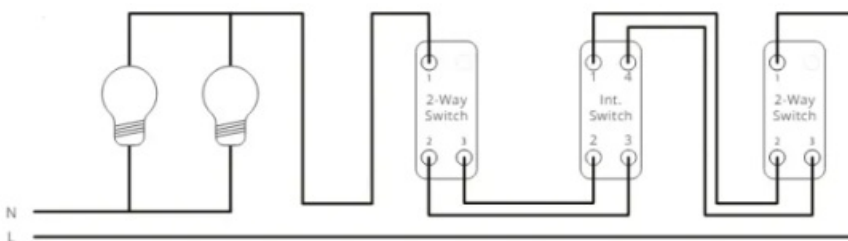
- Isolate the power supply at the consumer unit circuit breaker. Verify that the power is off.
- These products must be installed under the latest building regulations. If in any doubt, please contact a qualified electrician.

4.

## 5. Example 1

## 6. Way Wiring Diagrams

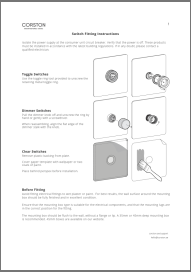
## 7. Example 1



## 8. Example 2

***Read More About This Manual & Download PDF:***

**Documents / Resources**

The thumbnail shows the cover of a manual titled 'CORSTON Switches and Sockets'. It features a grid of images showing different switch and socket models. The text on the cover includes 'CORSTON', 'Switches and Sockets', and 'Instructions'.

[CORSTON Switches and Sockets](#) [pdf] Instructions  
Switches and Sockets, and Sockets, Sockets

**References**

- [User Manual](#)

[Manuals+](#), [Privacy Policy](#)

This website is an independent publication and is neither affiliated with nor endorsed by any of the trademark owners. The "Bluetooth®" word mark and logos are registered trademarks owned by Bluetooth SIG, Inc. The "Wi-Fi®" word mark and logos are registered trademarks owned by the Wi-Fi Alliance. Any use of these marks on this website does not imply any affiliation with or endorsement.