



# CORSTON Bathroom Light Pull Installation Guide

[Home](#) » [CORSTON](#) » CORSTON Bathroom Light Pull Installation Guide 

## CORSTON

ARCHITECTURAL DETAIL  
Bathroom Pull Switch

A light switch module, cover and handle designed for use in bathrooms and/or WC.

Contents

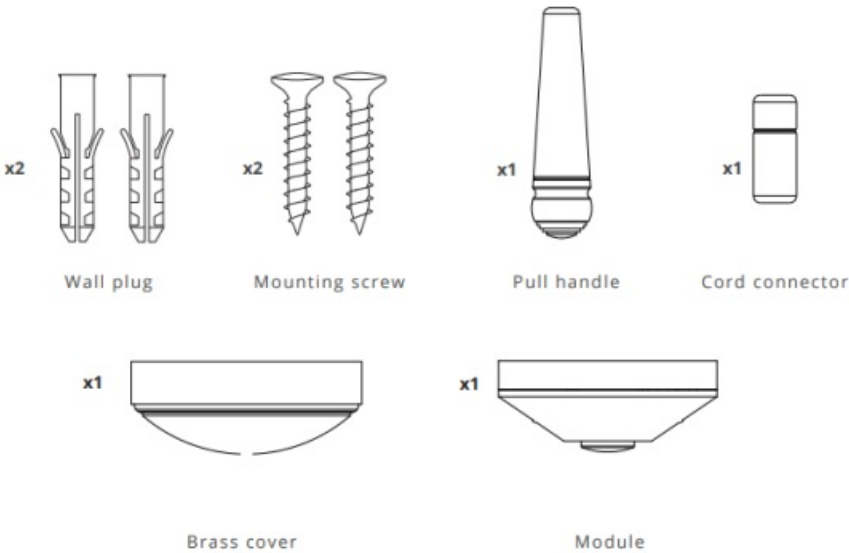
1 Included:

2 Documents / Resources

2.1 References

3 Related Posts

Included:





1. Remove terminal cover	2. Mark and drill holes for fixing plugs
3. Install the plugs	4. Fasten the base to the ceiling with the fixings provided
5. Wire in the switch following Corston wiring diagrams	6. Re-attach the terminal cover to the base
7. Thread the brass cover over the switch module	8.

[corston.ae/support](http://corston.ae/support)  
[hello@corston.ae](mailto:hello@corston.ae)

## Documents / Resources

	<p><a href="#">CORSTON Bathroom Light Pull</a> [pdf] Installation Guide AE_Bathroom_Light_Pull_Instructions_copy.pdf v 1727089438, 35 UK_ENGLISH_Pull_Instructions_copy, Bathroom Light Pull, Light Pull, Pull</p>
--	--

## References

- [User Manual](#)

## **Manuals+. Privacy Policy**

This website is an independent publication and is neither affiliated with nor endorsed by any of the trademark owners. The "Bluetooth®" word mark and logos are registered trademarks owned by Bluetooth SIG, Inc. The "Wi-Fi®" word mark and logos are registered trademarks owned by the Wi-Fi Alliance. Any use of these marks on this website does not imply any affiliation with or endorsement.